



Solid Research
Solid Relationships

Fundamental Outlook

Global Market Setup

- U.S. stocks yesterday ended on a flattish note.
- Dow ended **-0.2% lower**, while Nasdaq **and** S&P 500 **gained by +0.1% each**.
- **European** Indices closed on a **negative note with loss in the range of ~1%**.
- **Dow futures** is currently **trading 200 points higher (+2.25%)** amid growing hopes for an end to the Middle East war after President Donald Trump and Iranian officials signaled openness to a two-week ceasefire.
- **Brent Oil** for June 26 delivery is trading with a **loss of 12% at \$96 while WTI is at \$97, lower by 14%**.
- **Asian markets** are mostly trading **in the green** with Japan, Korea and Taiwan up by **nearly 4-5%**.
- **Global Cues: Positive**
- **Events to watch out:** FOMC meeting minutes (detailed record of Fed Reserve's policy meeting) and EIA crude inventories weekly change

Indian Market Setup

- Indian equity markets extended their recovery for a third consecutive session, after opening in the red amid global concerns. Early weakness was driven by renewed geopolitical tensions following fresh remarks from Donald Trump on Iran, along with a spike in crude oil prices.
- Nifty 50 closed higher at **23,123** up by **0.7% (155 points)**.
- Nifty Midcap 100 **ended higher to 0.2%** while Smallcap 100 ended slightly lower **0.1%**.
- **FII: -8,692Cr; DII: +7,980Cr**
- **Gift nifty** is currently trading with a gain of **around 650 points. (+3%)**
- **Domestic Cues: Positive**
- **Today event: RBI policy meeting (commentary on inflation and currency to watch out)**

Prestige Estates Projects closed FY26 achieving its highest-ever annual presales of ₹30,024 Crores (up 76% yoy). Reported pre-sales of INR77b (expected INR 64 Bln in 4QFY26, up 11% YoY / 84% QoQ (21% above our estimates).

View: Positive

Biocon has announced the commercial launch of its Denosumab biosimilars, branded as Bosaya and Aukelso, in the United States market. Denosumab products play a critical role in bone health, treating osteoporosis and bone complications associated with cancer. In 2024, denosumab products generated approximately \$5 billion in U.S. sales, reflecting the growing need for accessible treatment options.

Phoenix Mills: Strong Consumption, Leasing Momentum & Residential Upswing Drive Performance. **Retail:** In 4QFY26, consumption increased 31% YoY to INR43b while it grew 21% YoY to INR166b in FY26 inspite of no new mall additions during the year. **Residential:** Due to robust demand from premium residential spaces, the company achieved gross residential sales of INR4.7b for FY26, up ~2.2x YoY.

View: Positive

Fundamental Actionable Idea

Titan

CMP INR 4,231, TP INR 5,200, Upside 23%, Buy, MTF Stock

- Titan consumer businesses recorded ~46% YoY growth in 4QFY26. The company added 47 net new stores during the quarter, expanding its combined retail network to 3,603 stores.
- The jewelry portfolio delivered ~46% YoY (est. 35%) growth in 4QFY26, supported by higher average ticket size. Secondary (consumer) sales remained robust, increasing ~52% YoY, led by Tanishq and supported by Mia. Like-to-like (secondary) sales across all jewelry formats recorded strong growth of ~48% YoY.
- Watches and wearables division reported 7% growth against expectation of 14% largely due to decline in smart watch segment
- Titan's international business (including Damas) reported strong growth of ~156% YoY.
- For the march 26 quarter, we expect Titan to report 42% EBITDA growth and 59% PAT growth YoY (**this might under go change given revenue growth of 46% reported**). We model a CAGR of 23% in sales, 25% in EBITDA, and 27% in APAT over FY25-28E.

View: Buy

Fundamental Actionable Idea

Larsen and Toubro

CMP INR 3723; TP INR 4,400, Upside 18%, Buy, MTF Stock

- L&T has a significant portion of its order book (roughly 37-39%) in the Middle East, primarily Saudi Arabia. Easing tensions reduces risks of project delays and supply chain disruptions.
- Domestic segment ordering was largely flat over FY23-25 and had started growing in FY26, driven by large thermal power projects, building and factories, domestic refineries and metals. While government capex spending has been weak across large projects, the company remains optimistic about gaining a larger share from thermal power projects, real estate as well as select private sector industries.
- For Q4, we expect consolidated revenue growth of 17% YoY, led by 19% YoY revenue growth for core E&C. We expect EBITDA margin to contract 30bp YoY to 9.6% for Core E&C to factor in the current disruption in work at some locations in the Middle East.
- **View: Buy**

Top 10 Ideas

Co name	CMP	Target price	Upside
SBI	1030	1300	26%
Max Financial	1491	2200	48%
TVS motors	3471	4461	29%
BDL	1236	1800	46%
Tata Steel	198	240	21%
Tata Power	388	455	17%
Siemens Energy	2629	3600	37%
Coal India	463	500	8%
Laurus Labs	1057	1280	21%
Polycab	7227	9600	33%

Focus Investment Ideas

All Stocks Available in MTF

Duration : 1 Year Horizon

Stock Name	Rating	CMP (Rs)	Target (Rs)	Upside (%)
ICICI Prudential AMC	Buy	3010	3500	16%
TVS Motors	Buy	3470	4461	29%
State bank of India	Buy	1030	1300	26%
MTAR Technologies	Buy	3926	4810	23%
Delhivery	Buy	442	580	31%

Technical Outlook

Nifty Technical Outlook

NIFTY (CMP : 23123) Nifty immediate support is at 23000 then 22850 zone while resistance at 23750 then 24000 zones. Now it has to hold above 23000 zones for an up move towards 23750 then 24000 zones while supports have shifted higher to 23000 then 22850 zones.

2-Nifty50 - 07/04/26



Bank Nifty Technical Outlook

BANK NIFTY (CMP : 52716) Bank Nifty support is at 52250 then 52000 zones while resistance at 53500 then 54250 zones. Now it has to hold above 52500 zones for a bounce towards 53500 then 54250 levels while a hold below the same could lead to weakness towards 52250 then 52000 zones.

2-Niftybank - 07/04/26



Sensex Technical Outlook

Sensex (CMP : 74616) Sensex support is at 74000 then 73800 zones while resistance at 76000 then 76500 zones. Now it has to hold above 74300 for an up move towards 76000 and 76500 zones while support can be seen towards 74000 and 73800 zones.

2-S&P BSESENSX - 07/04/26



Midcap100 Index Technical Outlook

8-Apr-26



Nifty Midcap100 Stats

Advance	Decline
54	46

- Index has formed multiple hammer candlestick pattern at trendline support.

Investment in securities market are subject to market risks, read all the related documents carefully before investing.

Smallcap250 Index Technical Outlook

8-Apr-26



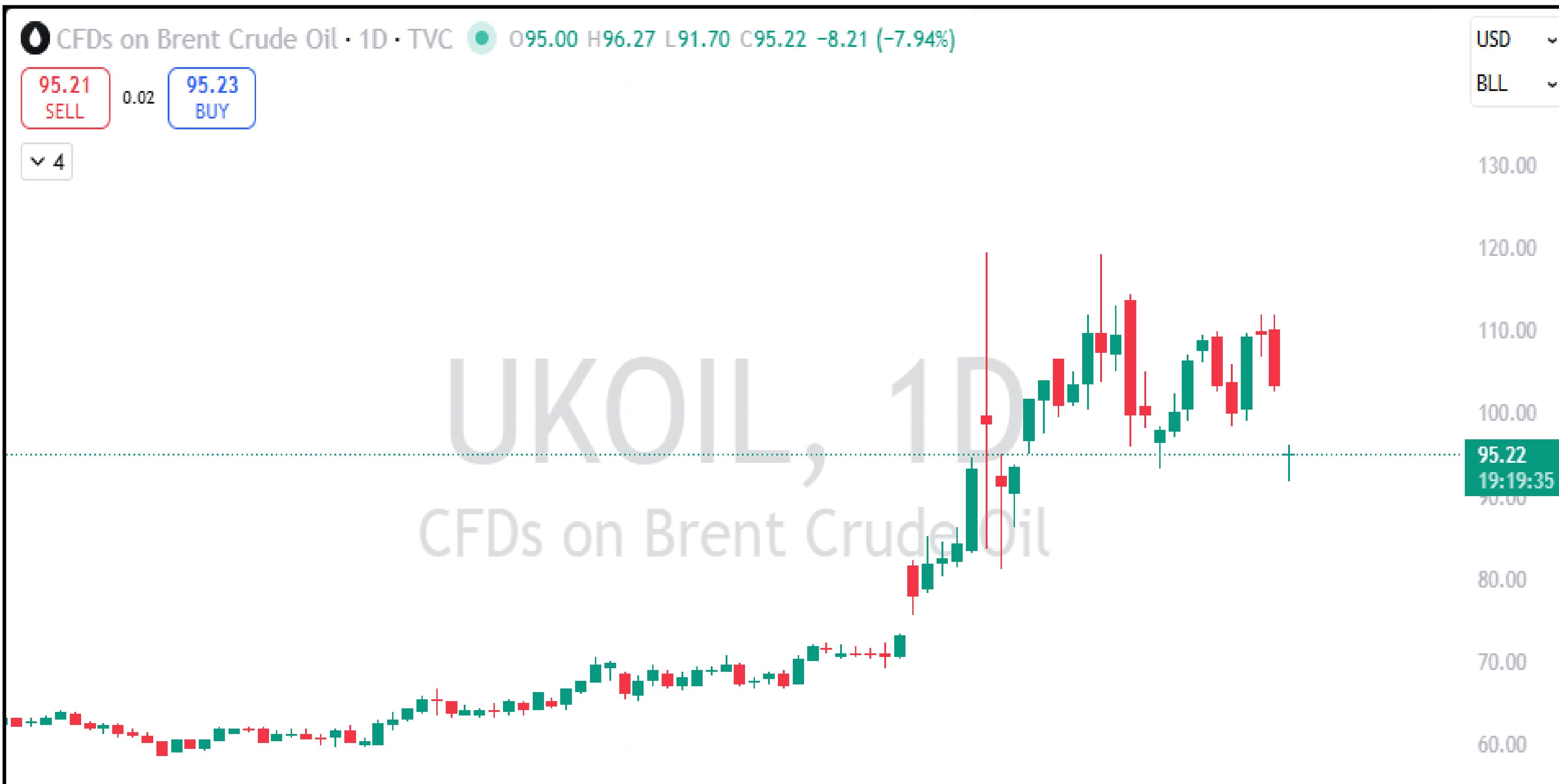
Nifty SmallCap250 Stats	
Advance	Decline
121	128

- Hovering around the lower band of the sloping channel.

Investment in securities market are subject to market risks, read all the related documents carefully before investing.

Brent Crude

8-Apr-26



- Brent Crude corrected 18% in last 2 days.

Investment in securities market are subject to market risks, read all the related documents carefully before investing.

Sectoral Performance - Daily

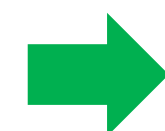
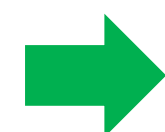
Indices	Closing 01-Apr	% Change				
		1-day	2-days	3-days	5-days	
NIFTY 50	23124	0.68%	1.96%	3.55%	-0.78%	
NIFTY BANK	52716	0.20%	2.46%	4.86%	-1.85%	
NIFTY MIDCAP 100	54601	0.20%	1.45%	3.70%	-1.32%	
NIFTY SMALLCAP 250	14901	0.13%	1.03%	4.29%	-0.24%	
NIFTY FINANCIAL SERVICES	24686	0.34%	2.93%	4.95%	-1.48%	
NIFTY PRIVATE BANK	25321	0.49%	3.06%	4.87%	-0.70%	
NIFTY PSU BANK	8265	-0.70%	1.22%	4.97%	-3.69%	
NIFTY IT	31403	2.50%	5.85%	8.05%	5.84%	
NIFTY FMCG	46980	0.82%	1.83%	3.17%	-0.64%	
NIFTY OIL & GAS	10747	0.50%	-1.66%	-0.38%	-1.91%	
NIFTY PHARMA	21869	0.15%	-0.65%	-1.64%	-3.58%	
NIFTY AUTO	24373	0.10%	0.55%	2.54%	-2.73%	
NIFTY METAL	11763	1.55%	3.07%	5.60%	3.71%	
NIFTY REALTY	699	1.69%	5.05%	7.29%	0.94%	
NIFTY INDIA DEFENCE	7800	1.04%	2.66%	8.11%	2.42%	

- Almost all sectors closed in Green, where Nifty Realty and Nifty IT were the highest gainers.

Investment in securities market are subject to market risks, read all the related documents carefully before investing.

Sectoral Performance - Weekly

Name	1W Change	2W Change	3W Change	4W Change	5W Change
Nifty 50	1.81	1.33	0.04	-0.12	-5.43
Nifty Bank	2.26	0.84	-1.33	-1.94	-8.77
Nifty IT	3.16	6.3	7.55	8.02	4.2
Nifty Auto	1.18	0.09	-1.39	0.74	-9.98
Nifty Metal	2.67	5.38	3.07	4.16	-1.98
Nifty Pharma	0.28	-3.09	-2.98	-4.22	-4.8
Nifty FMCG	1.62	1.19	-0.06	-1.97	-5.98
Nifty Realty	3.94	4.25	0.32	-1.58	-5.85
Nifty Media	0.58	1.29	0.44	0.75	-3.22
Nifty PSU Bank	1.6	0.19	-3.73	-2.96	-10.01



- Among the weekly sectoral change relative strength was seen in Nifty Realty and Nifty IT

Technical – Conviction Delivery Idea

JINDALSTEL

(Mcap ₹ 1,19,198 Cr.)

F&O Stock, MTF stock

- Has given Consolidation Breakout on weekly charts
- It is sustaining above 20 DEMA.
- RSI is on the verge of positive crossover.
- We recommend to buy the stock at CMP ₹1168 with a SL of ₹1115 and a TGT of ₹1260.

RECOs	CMP	SL	TARGET	DURATION
BUY	1168	1115	1260	1 Week



Technical Stocks On Radar

FEDERALBNK

(CMP: 275, Mcap ₹ 67,805 Cr.)

F&O Stock, MTF stock

- Has given a range Breakout
- Sustaining above 20 DEMA
- RSI indicator confirming positive momentum.
- Immediate support at 260.



GODREJPROP

(CMP: 1605, Mcap ₹ 48,335 Cr.)

F&O Stock, MTF stock

- Trendline Breakout on Daily Chart.
- Sustaining above 20 DEMA.
- RSI is positively trending.
- Immediate support at 1500.



Derivative Outlook

Nifty : Option Data

- Maximum Call OI is at 24000 then 23500 strike while Maximum Put OI is at 22500 then 23000 strike.
- Call writing is seen at 24000 then 23000 strike while Put writing is seen at 23000 then 22500 strike.
- Option data suggests a broader trading range in between 22600 to 23600 zones while an immediate range between 22900 to 23400 levels.




Option - Buying side strategy

Index	Single Leg Buying	Multi Leg Strategy
Nifty (Weekly)	23700 CE if it holds above 23000	Bull call spread (Buy 23700 CE and Sell 23900 CE) at net premium cost of 60-70 points
Sensex (Weekly)	76100 CE till it holds above 74300	Bull call spread (Buy 76100 CE and Sell 76400 CE) at net premium cost of 50-60 points
Bank Nifty (Monthly)	55500 CE till it holds above 52500	Bull call spread (Buy 53500 CE and Sell 54000 CE) at net premium cost of 240-260 points

Option - Selling side strategy

Index	Writing
Nifty (Weekly)	21800 PE
Sensex (Weekly)	70000 PE
Bank Nifty (Monthly)	45000 PE

Weekly Option Range for Option Writers based on Different Confidence Band								
Date		8-Apr-26	Weekly Expiry		13-Apr-26	Days to weekly expiry		4
Nifty			23124	India VIX		24.7		
Confidence Band	Probability	% Away From Spot	Range				Total Premium (Put + Call)	Types of Trades
			Put	Premium	Call	Premium		
1.00	68%	± 3.1%	22400	128	23800	81	209	Aggressive
1.25	79%	± 3.8%	22250	100	23950	53	153	Less Aggressive
1.50	87%	± 4.6%	22050	75	24150	27	102	Neutral
1.75	92%	± 5.3%	21900	60	24300	17	77	Conservative
2.00	95%	± 6.2%	21700	45	24500	9	54	Most Conservative
Date		8-Apr-26	Monthly Expiry		28-Apr-26	Days to weekly expiry		14
Bank Nifty			52716					
Confidence Band	Probability	% Away From Spot	Range				Total Premium (Put + Call)	Types of Trades
			Put	Premium	Call	Premium		
1.00	68%	± 5.7%	49700	571	55700	335	905	Aggressive
1.25	79%	± 7.0%	49000	458	56400	194	652	Less Aggressive
1.50	87%	± 8.6%	48200	357	57200	107	463	Neutral
1.75	92%	± 9.9%	47500	278	57900	66	344	Conservative

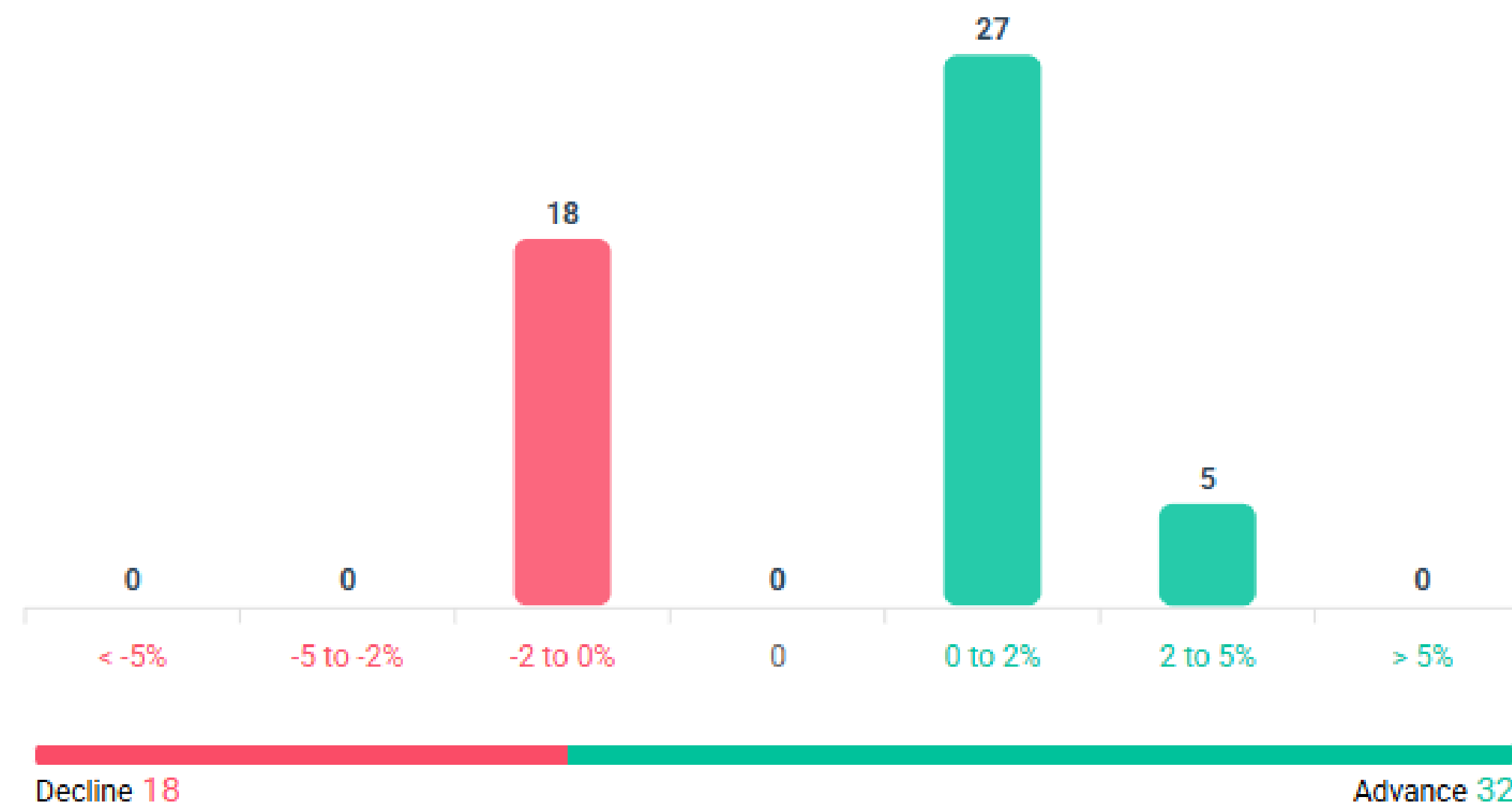
Investments in securities markets are subject to market risks. Please read all related documents carefully.

Nifty Advance Decline & Ban update

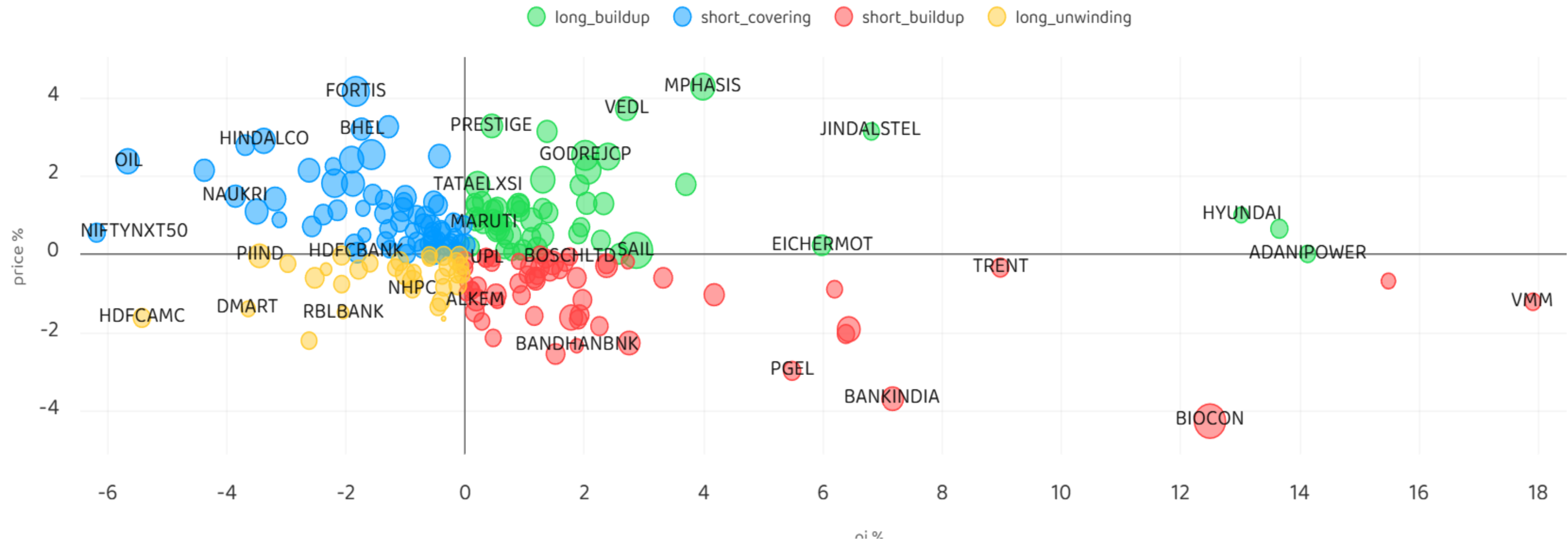
Stocks in Ban:

SAMMAANCAP

All FNO Nifty 50 Bank Nifty Fin Nifty



Stocks : Derivatives Outlook



Stocks : Options on radar

Stock	Call Strike	Trade	Buying Range	SL	TGT	Logic
SUPREMEIND	3800 CE	Buy	135-140	123	164	Short Covering
POLYCAB	7300 CE	Buy	220-225	204	257	Short Covering
OFSS	7200 CE	Buy	260-265	232	316	Short Covering
TCS	2540 CE	Buy	80-85	68	105	Short Covering

Stock	Put Strike	Trade	Buying Range	SL	TGT	Logic
VOLTAS	1220 PE	Buy	52-55	46	65	Short Build up

Quant Outlook

Quant Intraday Sell Ideas

What is this?

Based on technical indicators this strategy gives 2 stocks that have a high likelihood to fall during the day (from open to close). This is an intraday Sell strategy which can provide a good cushioning during a black swan event.

Today's **Sell** Ideas:

Stock Names	Close Price	SL (1%)	TP (1%)
ADANI PORTS (Sell)	1381	1395	1367
CDSL (Sell)	1203	1215	1191

What are the rules?

- Stock names will be given at market open (9:15 am)
- Recommended time to entry: between 9:15 to 9:30 am.
- Entry: We short 2 stocks daily (intraday)
- Exit: we will exit at 3:15 as this is an intraday call
- SL: is placed at 1% of the open.
- Book profit: At 1% fall since open.
- In special situations the book profit might be delayed if the stock is in free fall.

Siddhartha Khemka
Head – Retail Research

Chandan Taparua, CMT, CFTe
Head – Derivatives & Technical Research

Ruchit Jain
Head – Technical Research

Disclosures:

The following Disclosures are being made in compliance with the SEBI Research Analyst Regulations 2014 (herein after referred to as the Regulations).

Motilal Oswal Financial Services Ltd. (MOFSL) is a SEBI Registered Research Analyst having registration no. INH000000412 and BSE enlistment no. 5028. MOFSL, the Research Entity (RE) as defined in the Regulations, is engaged in the business of providing Stock broking services, Depository participant services & distribution of various financial products. MOFSL is a listed public company, the details in respect of which are available on www.motilaloswal.com. MOFSL is registered with the Securities & Exchange Board of India (SEBI) and is a registered Trading Member with National Stock Exchange of India Ltd. (NSE) and Bombay Stock Exchange Limited (BSE), Multi Commodity Exchange of India Limited (MCX) and National Commodity & Derivatives Exchange Limited (NCDEX) for its stock broking activities & is Depository participant with Central Depository Services Limited (CDSL) National Securities Depository Limited (NSDL), NERL, COMRIS and CCRL and is member of Association of Mutual Funds of India (AMFI) for distribution of financial products and Insurance Regulatory & Development Authority of India (IRDA) as Corporate Agent for insurance products and is a member of Association of Portfolio Managers in India (APMI) for distribution of PMS products. Details of associate entities of Motilal Oswal Financial Services Ltd. are available on the website at <http://onlinereports.motilaloswal.com/Dormant/documents/Associate%20Details.pdf>

Details of pending Enquiry Proceedings of Motilal Oswal Financial Services Limited are available on the website at <https://galaxy.motilaloswal.com/ResearchAnalyst/PublishViewLitigation.aspx>. As per Regulatory requirements, Research Audit Report is uploaded on www.motilaloswal.com > MOFSL-Important Links > MOFSL Research Analyst Compliance Audit Report.

MOFSL, its associates, Research Analyst or their relatives may have any financial interest in the subject company. MOFSL and/or its associates and/or Research Analyst or their relatives may have actual beneficial ownership of 1% or more securities in the subject company at the end of the month immediately preceding the date of publication of the Research Report or date of the public appearance. MOFSL and its associate company(ies), their directors and Research Analyst and their relatives may have any other potential conflict of interests at the time of publication of the research report or at the time of public appearance, however the same shall have no bearing whatsoever on the specific recommendations made by the analyst(s), as the recommendations made by the analyst(s) are completely independent of the views of the associates of MOFSL even though there might exist an inherent conflict of interest in some of the stocks mentioned in the research report..

In the past 12 months, MOFSL or any of its associates may have:

- received any compensation/other benefits from the subject company of this report
- managed or co-managed public offering of securities from subject company of this research report,
- received compensation for investment banking or merchant banking or brokerage services from subject company of this research report,
- received compensation for products or services other than investment banking or merchant banking or brokerage services from the subject company of this research report.

- MOFSL and its associates have not received any compensation or other benefits from the subject company or third party in connection with the research report.
- Subject Company may have been a client of MOFSL or its associates during twelve months preceding the date of distribution of the research report.
- Research Analyst may have served as director/officer/employee in the subject company.
- MOFSL and research analyst may engage in market making activity for the subject company.

MOFSL and its associate company(ies), and Research Analyst and their relatives from time to time may have:

a) a long or short position in, act as principal in, and buy or sell the securities or derivatives thereof of companies mentioned herein.

(b) be engaged in any other transaction involving such securities and earn brokerage or other compensation or act as a marketmaker in the financial instruments of the company(ies) discussed herein or act as an advisor or lender/borrower to such company(ies) or may have any other potential conflict of interests with respect to any recommendation and other related information and opinions.; however the same shall have no bearing whatsoever on the specific recommendations made by the analyst(s), as the recommendations made by the analyst(s) are completely independent of the views of the associates of MOFSL even though there might exist an inherent conflict of interest in some of the stocks mentioned in the research report.

Above disclosures include beneficial holdings lying in demat account of MOFSL which are opened for proprietary investments only. While calculating beneficial holdings, It does not consider demat accounts which are opened in name of MOFSL for other purposes (i.e holding client securities, collaterals, error trades etc.). MOFSL also earns DP income from clients which are not considered in above disclosures.

To enhance transparency, MOFSL has incorporated a Disclosure of Interest Statement in this document. This should, however, not be treated as endorsement of the views expressed in the report. MOFSL and / or its affiliates do and seek to do business including investment banking with companies covered in its research reports. As a result, the recipients of this report should be aware that MOFSL may have a potential conflict of interest that may affect the objectivity of this report.

Terms & Conditions:

This report has been prepared by MOFSL and is meant for sole use by the recipient and not for circulation. The report and information contained herein is strictly confidential and may not be altered in any way, transmitted to, copied or distributed, in part or in whole, to any other person or to the media or reproduced in any form, without prior written consent of MOFSL. The report is based on the facts, figures and information that are considered true, correct, reliable and accurate. The intent of this report is not recommendatory in nature. The information is obtained from publicly available media or other sources believed to be reliable. Such information has not been independently verified and no guaranty, representation of warranty, express or implied, is made as to its accuracy, completeness or correctness. All such information and opinions are subject to change without notice. The report is prepared solely for informational purpose and does not constitute an offer document or solicitation of offer to buy or sell or subscribe for securities or other financial instruments for the clients. Though disseminated to all the customers simultaneously, not all customers may receive this report at the same time. MOFSL will not treat recipients as customers by virtue of their receiving this report.

Analyst Certification

The views expressed in this research report accurately reflect the personal views of the analyst(s) about the subject securities or issues, and no part of the compensation of the research analyst(s) was, is, or will be directly or indirectly related to the specific recommendations and views expressed by research analyst(s) in this report.

Disclosure of Interest Statement

Analyst ownership of the stock No

A graph of daily closing prices of securities is available at www.nseindia.com, www.bseindia.com. Research Analyst views on Subject Company may vary based on Fundamental research and Technical Research. Proprietary trading desk of MOFSL or its associates maintains arm's length distance with Research Team as all the activities are segregated from MOFSL research activity and therefore it can have an independent view with regards to subject company for which Research Team have expressed their views.

Regional Disclosures (outside India)

This report is not directed or intended for distribution to or use by any person or entity resident in a state, country or any jurisdiction, where such distribution, publication, availability or use would be contrary to law, regulation or which would subject MOFSL & its group companies to registration or licensing requirements within such jurisdictions.

For Hong Kong:

This report is distributed in Hong Kong by Motilal Oswal capital Markets (Hong Kong) Private Limited, a licensed corporation (CE AYY-301) licensed and regulated by the Hong Kong Securities and Futures Commission (SFC) pursuant to the Securities and Futures Ordinance (Chapter 571 of the Laws of Hong Kong) "SFO". As per SEBI (Research Analyst Regulations) 2014 Motilal Oswal Financial Services Limited (SEBI Reg No. INH000000412) has an agreement with Motilal Oswal capital Markets (Hong Kong) Private Limited for distribution of research report in Hong Kong. This report is intended for distribution only to "Professional Investors" as defined in Part I of Schedule 1 to SFO. Any investment or investment activity to which this document relates is only available to professional investor and will be engaged only with professional investors." Nothing here is an offer or solicitation of these securities, products and services in any jurisdiction where their offer or sale is not qualified or exempt from registration. The Indian Analyst(s) who compile this report is/are not located in Hong Kong & are not conducting Research Analysis in Hong Kong.

For U.S.

MOTILAL Oswal Financial Services Limited (MOFSL) is not a registered broker - dealer under the U.S. Securities Exchange Act of 1934, as amended (the "1934 act") and under applicable state laws in the United States. In addition MOFSL is not a registered investment adviser under the U.S. Investment Advisers Act of 1940, as amended (the "Advisers Act" and together with the 1934 Act, the "Acts"), and under applicable state laws in the United States. Accordingly, in the absence of specific exemption under the Acts, any brokerage and investment services provided by MOFSL, including the products and services described herein are not available to or intended for U.S. persons. This report is intended for distribution only to "Major Institutional Investors" as defined by Rule 15a-6(b)(4) of the Exchange Act and interpretations thereof by SEC (henceforth referred to as "major institutional investors"). This document must not be acted on or relied on by persons who are not major institutional investors. Any investment or investment activity to which this document relates is only available to major institutional investors and will be engaged in only with major institutional investors. In reliance on the exemption from registration provided by Rule 15a-6 of the U.S. Securities Exchange Act of 1934, as amended (the "Exchange Act") and interpretations thereof by the U.S. Securities and Exchange Commission ("SEC") in order to conduct business with Institutional Investors based in the U.S., MOFSL has entered into a chaperoning agreement with a U.S. registered broker-dealer, Motilal Oswal Securities International Private Limited. ("MOSIPL"). Any business interaction pursuant to this report will have to be executed within the provisions of this chaperoning agreement.

The Research Analysts contributing to the report may not be registered /qualified as research analyst with FINRA. Such research analyst may not be associated persons of the U.S. registered broker-dealer, MOSIPL, and therefore, may not be subject to NASD rule 2711 and NYSE Rule 472 restrictions on communication with a subject company, public appearances and trading securities held by a research analyst account.

For Singapore

In Singapore, this report is being distributed by Motilal Oswal Capital Markets (Singapore) Pte. Ltd. ("MOCMSPL") (UEN 201129401Z), which is a holder of a capital markets services license and an exempt financial adviser in Singapore. This report is distributed solely to persons who (a) qualify as "institutional investors" as defined in section 4A(1)(c) of the Securities and Futures Act of Singapore ("SFA") or (b) are considered "accredited investors" as defined in section 2(1) of the Financial Advisers Regulations of Singapore read with section 4A(1)(a) of the SFA. Accordingly, if a recipient is neither an "institutional investor" nor an "accredited investor", they must immediately discontinue any use of this Report and inform MOCMSPL .

In respect of any matter arising from or in connection with the research you could contact the following representatives of MOCMSPL. In case of grievances for any of the services rendered by MOCMSPL write to grievances@motilaloswal.com.

Nainesh Rajani

Email: nainesh.rajani@motilaloswal.com

Contact: (+65) 8328 0276

Disclaimer:

This report is intended for distribution to Retail Investors.

The report and information contained herein is strictly confidential and meant solely for the selected recipient and may not be altered in any way, transmitted to, copied or distributed, in part or in whole, to any other person or to the media or reproduced in any form, without prior written consent. This report and information herein is solely for informational purpose and may not be used or considered as an offer document or solicitation of offer to buy or sell or subscribe for securities or other financial instruments. Nothing in this report constitutes investment, legal, accounting and tax advice or a representation that any investment or strategy is suitable or appropriate to your specific circumstances. The securities discussed and opinions expressed in this report may not be suitable for all investors, who must make their own investment decisions, based on their own investment objectives, financial positions and needs of specific recipient. This may not be taken in substitution for the exercise of independent judgment by any recipient. Each recipient of this document should make such investigations as it deems necessary to arrive at an independent evaluation of an investment in the securities of companies referred to in this document (including the merits and risks involved), and should consult its own advisors to determine the merits and risks of such an investment. The investment discussed or views expressed may not be suitable for all investors. Certain transactions-including those involving futures, options, another derivative products as well as non-investment grade securities - involve substantial risk and are not suitable for all investors. No representation or warranty, express or implied, is made as to the accuracy, completeness or fairness of the information and opinions contained in this document. The Disclosures of Interest Statement incorporated in this document is provided solely to enhance the transparency and should not be treated as endorsement of the views expressed in the report. This information is subject to change without any prior notice. The Company reserves the right to make modifications and alternations to this statement as may be required from time to time without any prior approval. MOFSL, its associates, their directors and the employees may from time to time, effect or have effected an own account transaction in, or deal as principal or agent in or for the securities mentioned in this document. They may perform or seek to perform investment banking or other services for, or solicit investment banking or other business from, any company referred to in this report. Each of these entities functions as a separate, distinct and independent of each other. The recipient should take this into account before interpreting the document. This report has been prepared on the basis of information that is already available in publicly accessible media or developed through analysis of MOFSL. The views expressed are those of the analyst, and the Company may or may not subscribe to all the views expressed therein. This document is being supplied to you solely for your information and may not be reproduced, redistributed or passed on, directly or indirectly, to any other person or published, copied, in whole or in part, for any purpose. This report is not directed or intended for distribution to, or use by, any person or entity who is a citizen or resident of or located in any locality, state, country or other jurisdiction, where such distribution, publication, availability or use would be contrary to law, regulation or which would subject MOFSL to any registration or licensing requirement within such jurisdiction. The securities described herein may or may not be eligible for sale in all jurisdictions or to certain category of investors. Persons in whose possession this document may come are required to inform themselves of and to observe such restriction. Neither the Firm, not its directors, employees, agents or representatives shall be liable for any damages whether direct or indirect, incidental, special or consequential including lost revenue or lost profits that may arise from or in connection with the use of the information. The person accessing this information specifically agrees to exempt MOFSL or any of its affiliates or employees from, any and all responsibility/liability arising from such misuse and agrees not to hold MOFSL or any of its affiliates or employees responsible for any such misuse and further agrees to hold MOFSL or any of its affiliates or employees free and harmless from all losses, costs, damages, expenses that may be suffered by the person accessing this information due to any errors and delays.

This report is meant for the clients of Motilal Oswal only.

Investment in securities market are subject to market risks. Read all the related documents carefully before investing.

Registration granted by SEBI, enlistment as RA with Exchange and certification from NISM in no way guarantee performance of the intermediary or provide any assurance of returns to investors

Registered Office Address: Motilal Oswal Tower, Rahimtullah Sayani Road, Opposite Parel ST Depot, Prabhadevi, Mumbai-400025; Tel No.: 022 - 71934200 / 71934263; www.motilaloswal.com. Correspondence Address: Palm Spring Centre, 2nd Floor, Palm Court Complex, New Link Road, Malad (West), Mumbai- 400 064. Tel No: 022 71881000. Details of Compliance Officer: Neeraj Agarwal, Email Id: na@motilaloswal.com, Contact No.:022-40548085.

Grievance Redressal Cell:

Contact Person	Contact No.	Email ID
Ms. Hemangi Date	022 40548000 / 022 67490600	query@motilaloswal.com
Ms. Kumud Upadhyay	022 40548082	servicehead@motilaloswal.com
Mr. Ajay Menon	022 40548083	am@motilaloswal.com
Mr. Neeraj Agarwal	022 40548085	na@motilaloswal.com
Mr. Siddhartha Khemka	022 50362452	po.research@motilaloswal.com

Registration details: Motilal Oswal Financial Services Ltd. (MOFSL): INZ000158836 (BSE/NSE/MCX/NCDEX); CDSL and NSDL: IN-DP-16-2015; Research Analyst: INH000000412, BSE enlistment no. 5028, AMFI registered Mutual Fund Distributor and SIF Distributor: ARN : 146822. IRDA Corporate Agent – CA0579, APMI: APRN00233. Motilal Oswal Financial Services Ltd. is a distributor of Mutual Funds, PMS, Fixed Deposit, Insurance, Bond, NCDs and IPO products.

Customer having any query/feedback/clarification may write to query@motilaloswal.com. In case of grievances for any of the services rendered by Motilal Oswal Financial Services Limited (MOFSL) write to grievances@motilaloswal.com, for DP to dp grievances@motilaloswal.com.

Investment in securities market are subject to market risks, read all the related documents carefully before investing.