



**Solid Research**  
**Solid Relationships**



# Fundamental Outlook



# Global Market Summary

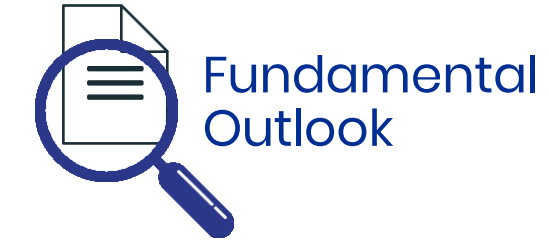


- U.S. stocks ended mixed with Dow closing flat while S&P 500 and Nasdaq both closed **with losses of 0.2% and 0.5% respectively.**
- U.S. stock index futures fell as investors rushed out of risk-driven assets after Washington over the weekend attacked Iran's nuclear sites, heralding a potential escalation in the Middle Eastern conflict.
- European markets flat to positive with Germany **closing with a gain of 1.3%**
- Dow futures is currently trading **with a loss of 0.4%**
- Asian markets are **trading with a loss of 0.5% to 1%.**

Global Cues: **Negative**



# Indian Market Summary



- **Indian equities** staged a strong recovery on Friday, snapping a three-day losing streak. Investors drew relief after US announced a two-week pause before deciding on its potential involvement in the Israel-Iran conflict.
- **Nifty50** ended **higher by 319 points at 25,112 (+1.3%)**.
- **Nifty Midcap100 and Smallcap100 gained by 1.5% and 1.0% respectively.**
- **FIIs: +Rs 7,941cr; DIIs –Rs3,050cr**
- **GIFT Nifty** is trading in **flat with a loss of -0.5% (133 points lower)**

**Domestic Cues: Negative**



# News & Impact



23-Jun-25

**Bharat Electronics** secured additional orders worth Rs 585 crore. Major orders received include fire control and sighting system for missiles, communication equipment, jammers, spares, services

**Impact:** Positive

**LT Foods** may face pressure after the US Department of Commerce imposed a steep 340.7% countervailing duty on organic soybean meal exports by its subsidiary, Ecopure Specialities. The move, stemming from a US probe into trade practices, could impact export revenue and margins in the near term.

**Impact:** Negative

**Bajel Projects** has clinched a large-scale power transmission order from PowerGrid Corporation via MEL Power Transmission Ltd. Categorized as "Ultra-Mega" with a value exceeding ₹400 crore.

**Impact:** Positive



# Actionable Idea



## AU Small Finance Bank

CMP ₹ 795; **Positive**, MTF Stock

- RBI has eased Priority sector lending (PSL) target to 60% offering structural relief and operational flexibility. MFI segment was leveraged to achieve PSL targets and relaxation provides leeway to diversify small finance bank with relatively more diversified portfolio can now scale up non-PSL portfolio.
- AUBANK reported a healthy quarter with a beat in earnings fueled by healthy other income, which was partially offset by provisions that increased sharply as the bank strengthened its PCR. Margins contracted 6bp QoQ, and management remains watchful on NIM due to the pressure on yields amid the ongoing rate cuts by the RBI. On the business front, both advances and deposits grew at a healthy rate. As a result, the C/D ratio declined to 86.2%. Asset quality improved with slippages declining sequentially (though they stood elevated). Management expects credit costs to remain elevated in the near term, but they are likely to improve to 85bp (as % of avg. assets) in FY26. The conversion to a universal bank is expected in the current year, which will further enable healthy growth and strengthen the bank's market positioning.

**View: Positive**



# Actionable Idea



## Godrej Properties

CMP ₹ 2,430; Target price: ₹ 2755; **Upside:13%; Buy, MTF Stock**

- Godrej Properties has sold inventory worth over INR ~ 2,000 crores during the launch of the first phase of the project in Bengaluru. Launched in April 2025, this is the most successful launch ever in the North Bengaluru micro-market in terms of the value and volume of sales achieved.
- GPL completed FY25 with a strong performance across key operational parameters of pre-sales and cash flows. With a strong launch pipeline, the company remains on track to achieve its operational goals. Thus, we keep our FY26/FY27 pre-sales estimates unchanged.
- Gross margin has sustained at a healthy 35-40% for recognized projects in P&L, the higher scale of operations has led to a proportionately high overhead increase, leading to subdued operating profits. We expect the sales booked over the past two years, characterized by a better margin profile and outright ownership, to be recognized after FY26/FY27. We believe GPL will continue to surprise on growth, cash flows, and margins, given its strong pipeline and healthy realizations, which have been key concerns for investors.

**View: Buy**



# Focus Ideas for the Month



Fundamental  
Outlook

23-Jun-25

All Stocks Available in MTF

Duration : 1 Year Horizon

Stock Name	Rating	CMP (Rs)	Target (Rs)	Upside (%)
Time Technoplast	Buy	437	578	32%
Nuvama Wealth	Buy	6,870	8,600	25%
Niva Bupa	Buy	81	100	23%
ICICI Bank	Buy	1,426	1,650	16%
Hindustan Aeronautics	Buy	4,960	5,650	14%

Investment in securities market are subject to market risks, read all the related documents carefully before investing.



# Technical Outlook



# Nifty Technical Outlook



23-Jun-25

**NIFTY (CMP : 25112)** Nifty immediate support is at 24950 then 24800 zones while resistance at 25250 then 25500 zones. Now it has to continue to hold above 25000, for an up move towards 25250 then 25500 zones while supports have shifted higher to 24950 then 24800 zones.

1-Nifty50 - 20/06/25



Investment in securities market are subject to market risks, read all the related documents carefully before investing.



# Bank Nifty Technical Outlook



23-Jun-25

**BANK NIFTY (CMP : 56252)** Bank Nifty support is at 56000 then 55750 zones while resistance at 56500 then 57000 zones. Now it has to hold above 56000 zones for an up move towards 56500 then 57000 levels while on the downside support is seen at 56000 then 55750 zones.

1-Niftybank - 20/06/25



Investment in securities market are subject to market risks, read all the related documents carefully before investing.



# Sectoral Performance



Technical  
Outlook

**motilal  
oswal**  
Wealth Management

23-Jun-25

	Closing	% Change							
Indices	20-Jun	1-day		2-days		3-days		5-days	
NIFTY 50	25112		1.29%		1.21%		1.04%		1.59%
NIFTY BANK	56253		1.22%		0.76%		0.97%		1.31%
NIFTY MIDCAP 100	57996		1.46%		-0.20%		-0.66%		-0.40%
NIFTY SMALLCAP 250	16917		0.62%		-1.32%		-1.52%		-1.71%
NIFTY FINANCIAL SERVICES	26649		1.33%		0.94%		0.74%		1.19%
➡ NIFTY PRIVATE BANK	27979		1.03%		0.73%		1.13%		1.64%
NIFTY PSU BANK	6845		1.64%		-0.43%		-0.85%		-1.30%
NIFTY IT	38991		0.84%		-0.10%		-0.93%		1.36%
NIFTY FMCG	54631		0.64%		0.33%		-0.14%		0.19%
NIFTY OIL & GAS	11462		0.91%		0.27%		-0.22%		0.16%
NIFTY PHARMA	21613		0.80%		0.11%		-0.05%		-1.69%
➡ NIFTY AUTO	23679		1.04%		1.57%		1.95%		1.51%
NIFTY METAL	9139		1.09%		-0.21%		-0.93%		-1.30%
NIFTY REALTY	1014		2.11%		0.47%		0.00%		0.66%
NIFTY INDIA DEFENCE	8888		1.89%		0.35%		-0.11%		1.10%
NIFTY CPSE	6594		1.65%		0.94%		0.20%		0.99%

Investment in securities market are subject to market risks, read all the related documents carefully before investing.



# Technical Trading Idea

23-Jun-25

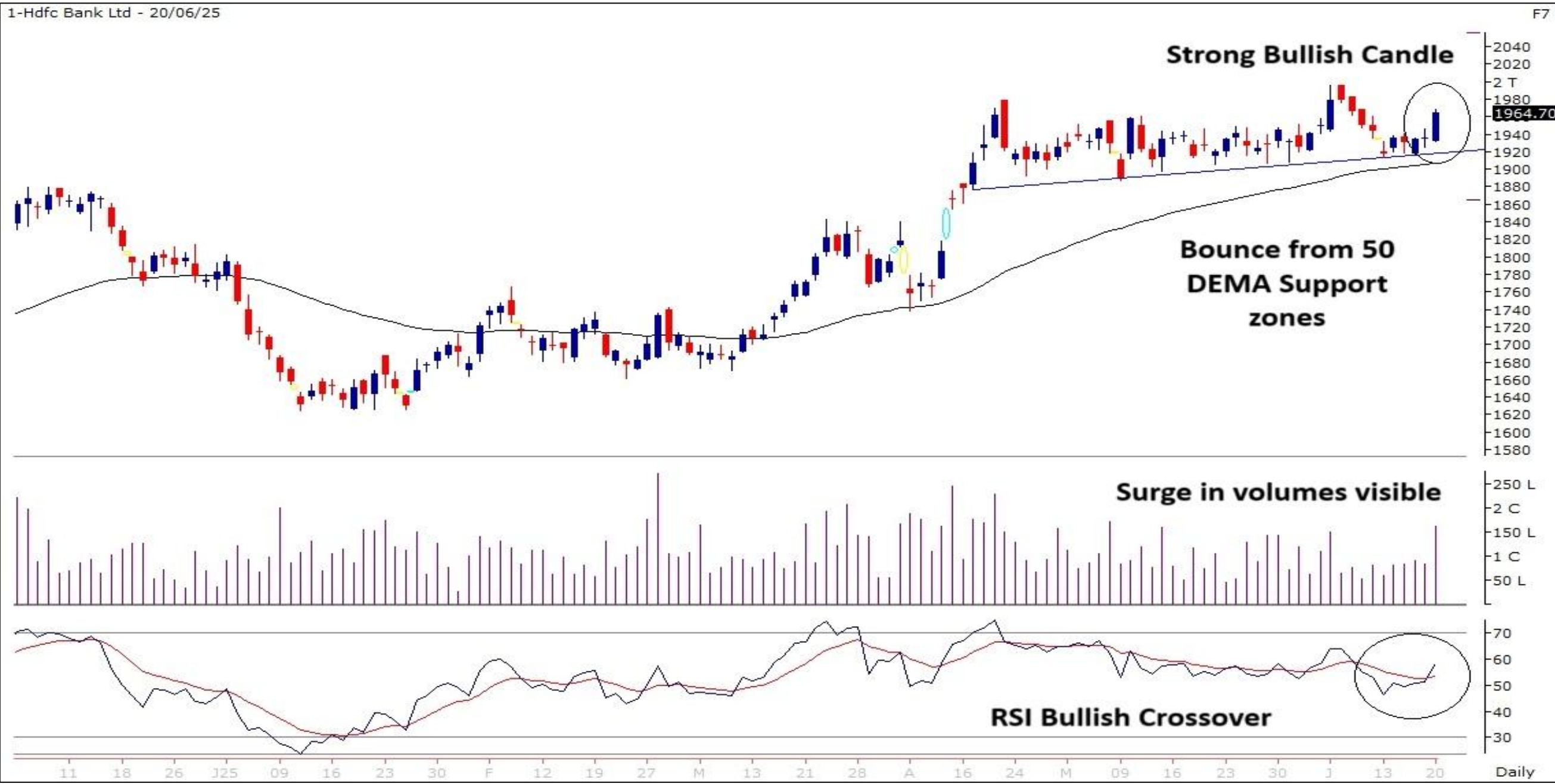
## HDFCBANK

(Mcap ₹ 15,06,515 Cr.)

F&O Stock, MTF Stock

- Bounce up from 50 DEMA support zones.
- Strong bullish candle.
- Surge in volumes visible.
- RSI momentum indicator giving bullish crossover.
- We recommend to buy the stock at CMP ₹1964 with a SL of ₹1913 and a TGT of ₹2020.

RECOs	CMP	SL	TARGET	DURATION
Buy	1964	1913	2020	Weekly



Investment in securities market are subject to market risks, read all the related documents carefully before investing.



# Stocks On Radar

23-Jun-25

## RELIANCE

(CMP: 1466, Mcap ₹ 19,84,131 Cr.)

F&O Stock, MTF Stock

- Ascending triangle breakout.
- Strong bullish candle.
- Surge in volumes visible.
- RSI indicator positively placed.
- Immediate support at 1415.



## INDUSTOWER

(CMP: 404, Mcap ₹ 1,08,956 Cr.)

F&O Stock, MTF Stock

- Descending triangle breakout.
- Bullish marubozu candle.
- Surge in volumes.
- RSI indicator rising.
- Immediate support at 388.



Investment in securities market are subject to market risks, read all the related documents carefully before investing.



# Derivative Outlook



# Derivative Outlook



- Nifty June future closed at 25,111.70 with a discount of 0.70 point v/s 9.85 point discount in the last session.
- Nifty Put/Call Ratio (OI) increased from 1.03 to 1.16 level.
- India VIX decreased by 4.09% to 13.67 level.



# FII Cash & Derivative Activity



23-Jun-25

- FII on Derivatives front : Long Built up in index futures, Call and Put selling in index options.
- In the cash market : FIIs were net buyers to the tune of 7704 Cr while DIIs were also net sellers worth 3657 Cr.
- FIIs long short ratio : Increased to 23.79%

## INSTITUTIONAL DERIVATIVES ACTIVITY

Change in OI in Future Index Long (in contracts)					Change in OI in Future Index Short (in contracts)					Change in OI in Future Stock Long (in contracts)					Change in OI in Future Stock Short (in contracts)				
Date	Client	DII	FII	Pro	Date	Client	DII	FII	Pro	Date	Client	DII	FII	Pro	Date	Client	DII	FII	Pro
16-Jun-25	-7725	-1208	2399	7911	16-Jun-25	3303	5230	-67	-7089	16-Jun-25	4678	-244	42134	2430	16-Jun-25	8778	28762	982	10476
17-Jun-25	3179	-232	1219	-3636	17-Jun-25	-1379	125	-1041	2825	17-Jun-25	14537	3228	-2409	6060	17-Jun-25	6086	-24070	23700	15700
18-Jun-25	-2788	-8	-1365	327	18-Jun-25	-1362	3716	-1715	-4473	18-Jun-25	28633	5012	7344	25898	18-Jun-25	2993	13654	34773	15467
19-Jun-25	-3185	-123	4805	-599	19-Jun-25	1623	183	2634	-3542	19-Jun-25	-8917	5642	-3229	15362	19-Jun-25	4493	-18683	2381	20667
20-Jun-25	-5206	-4458	4561	14401	20-Jun-25	892	7226	3967	-2787	20-Jun-25	-36528	4551	57224	-12257	20-Jun-25	8773	-12493	-20659	37369

Change in OI in Option Index Call Long (in contracts)					Change in OI in Option Index Call Short (in contracts)					Change in OI in Option Index Put Long (in contracts)					Change in OI in Option Index Put Short (in contracts)				
Date	Client	DII	FII	Pro	Date	Client	DII	FII	Pro	Date	Client	DII	FII	Pro	Date	Client	DII	FII	Pro
16-Jun-25	-58053	0	15439	131625	16-Jun-25	114088	0	17299	-42377	16-Jun-25	624700	12	24679	197496	16-Jun-25	558782	0	52614	235492
17-Jun-25	533348	0	21793	4965	17-Jun-25	385569	0	7973	166564	17-Jun-25	-61671	341	1029	-15537	17-Jun-25	-9086	0	-25531	-41222
18-Jun-25	384027	0	15871	208196	18-Jun-25	356277	0	62048	189770	18-Jun-25	33254	0	-982	-3163	18-Jun-25	26781	0	28523	-26194
19-Jun-25	-1266402	0	-94016	-481368	19-Jun-25	-1253851	0	-165325	-422609	19-Jun-25	-729074	0	-81514	-300366	19-Jun-25	-715762	0	-129834	-265359
20-Jun-25	117342	0	108547	267621	20-Jun-25	296716	0	155972	40821	20-Jun-25	606116	0	112618	347440	20-Jun-25	582854	0	173316	310003

Today's OI Changes (in contracts)										Cumulative Positions (in contracts)									
Clients	Index Futures			Index Calls			Index Puts			Clients	Index Futures			Index Calls			Index Puts		
	Long	Short	Net	Long	Short	Net	Long	Short	Net		Long	Short	Net	Long	Short	Net	Long	Short	Net
	-5206	892	-6098	117342	296716	-179374	606116	582854	23262		184737	126982	57755	1827905	2306888	-478983	2124806	2368944	-244138
DII	-4458	7226	-11684	0	0	0	0	0	0	DII	81593	51037	30556	70	0	70	15887	0	15887
FII	4561	3967	594	108547	155972	-47425	112618	173316	-60698	FII	43734	140102	-96368	607315	452592	154723	649320	481610	167710
Pro	14401	-2787	17188	267621	40821	226800	347440	310003	37437	Pro	38294	30237	8057	1105041	780851	324190	1065731	1005189	60542

FII Derivatives Activity		Index Long Short Ratio	
Segment	Net Amount (in Cr)		
Index Futures	118	Clients	59.26%
Index Options	-22366	DII	61.52%
Stock Futures	4403	FII	23.79%
Stock Options	5639	Pro	55.88%

Institutions Activity in Cash Segment - Net Value (in Cr)							
	20-Jun-25	19-Jun-25	18-Jun-25	17-Jun-25	16-Jun-25	13-Jun-25	12-Jun-25
FIIs	7704.37	1008.43	945.35	1616.19	-2287.69	-1233.47	-3831.42
DIIs	-3657.7	365.68	952.81	7796.57	5607.64	2906.13	9393.85



Investments in securities markets are subject to market risks.  
Please read all related documents carefully.

Investment in securities market are subject to market risks, read all the related documents carefully before investing.



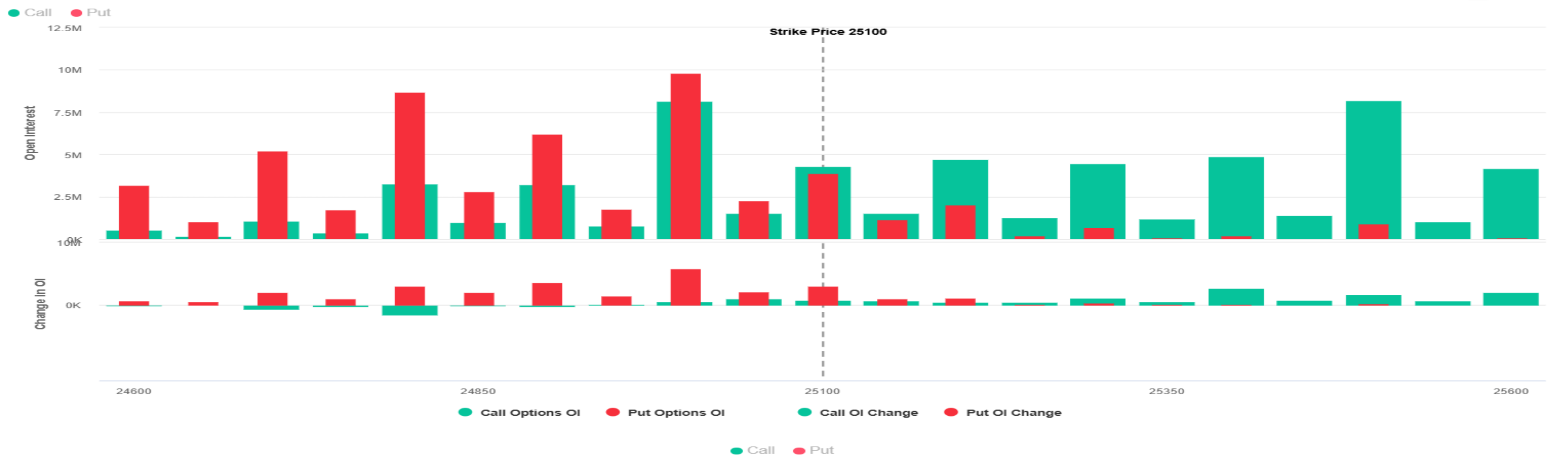
# Nifty : Option Data



23-Jun-25

- Maximum Call OI is at 25500 then 26000 strike while Maximum Put OI is at 24800 then 25000 strike.
- Call writing is seen at 25500 then 25600 strike while Put writing is seen at 24900 then 25000 strike.
- Option data suggests a broader trading range in between 24600 to 25600 zones while an immediate range between 24900 to 25300 levels.

Nifty 50 OI Chart(26 Jun 2025)



Investment in securities market are subject to market risks, read all the related documents carefully before investing.



# Option - Buying side strategy



23-Jun-25

Index	Single Leg Buying	Multi Leg Strategy
<b>Nifty</b> (Monthly)	25200 CE if it holds above 25000	Bull Call Spread (Buy 25200 CE and Sell 25400 CE) at net premium cost of 60-65 points
<b>Sensex</b> (Monthly)	82700 CE if it holds above 82200	Bull Call Spread (Buy 82800 CE and Sell 83000 CE) at net premium cost of 50-60 points
<b>Bank Nifty</b> (Monthly)	56500 CE till it holds above 56000	Bull Call Spread (Buy 56300 CE and Sell 56700 CE) at net premium cost of 160-180 points




# Option - Selling side strategy



23-Jun-25

Index	Writing
<b>Nifty</b> (Monthly)	23700 PE & 25700 CE
<b>Sensex</b> (Monthly)	79500 PE & 83800 CE
<b>Bank Nifty</b> (Monthly)	54000 PE & 57500 CE

Weekly Option Range for Option Writers based on Different Confidence Band								
Date		23-Jun-25	Weekly Expiry		26-Jun-25	Days to weekly expiry		4
								
Nifty		25112	India VIX		13.7			
Confidence Band	Probability	% Away From Spot	Range				Total Premium (Put + Call)	Types of Trades
			Put	Premium	Call	Premium		
1.00	68%	± 0.8%	24900	86	25300	69	154	Aggressive
1.25	79%	± 1.0%	24850	74	25350	55	129	Less Aggressive
1.50	87%	± 1.2%	24800	64	25400	43	108	Neutral
1.75	92%	± 1.4%	24750	57	25450	34	90	Conservative
2.00	95%	± 1.6%	24700	50	25500	26	76	Most Conservative
Date		23-Jun-25	Monthly Expiry		26-Jun-25	Days to weekly expiry		4
Bank Nifty		56253						
Confidence Band	Probability	% Away From Spot	Range				Total Premium (Put + Call)	Types of Trades
			Put	Premium	Call	Premium		
1.00	68%	± 0.8%	55800	200	56800	157	357	Aggressive
1.25	79%	± 1.0%	55700	177	56900	134	311	Less Aggressive
1.50	87%	± 1.2%	55600	154	57000	111	265	Neutral
1.75	92%	± 1.3%	55500	140	57100	91	232	Conservative
2.00	95%	± 1.5%	55400	124	57200	76	200	Most Conservative
Investments in securities markets are subject to market risks. Please read all related documents carefully.								

Investment in securities market are subject to market risks, read all the related documents carefully before investing.

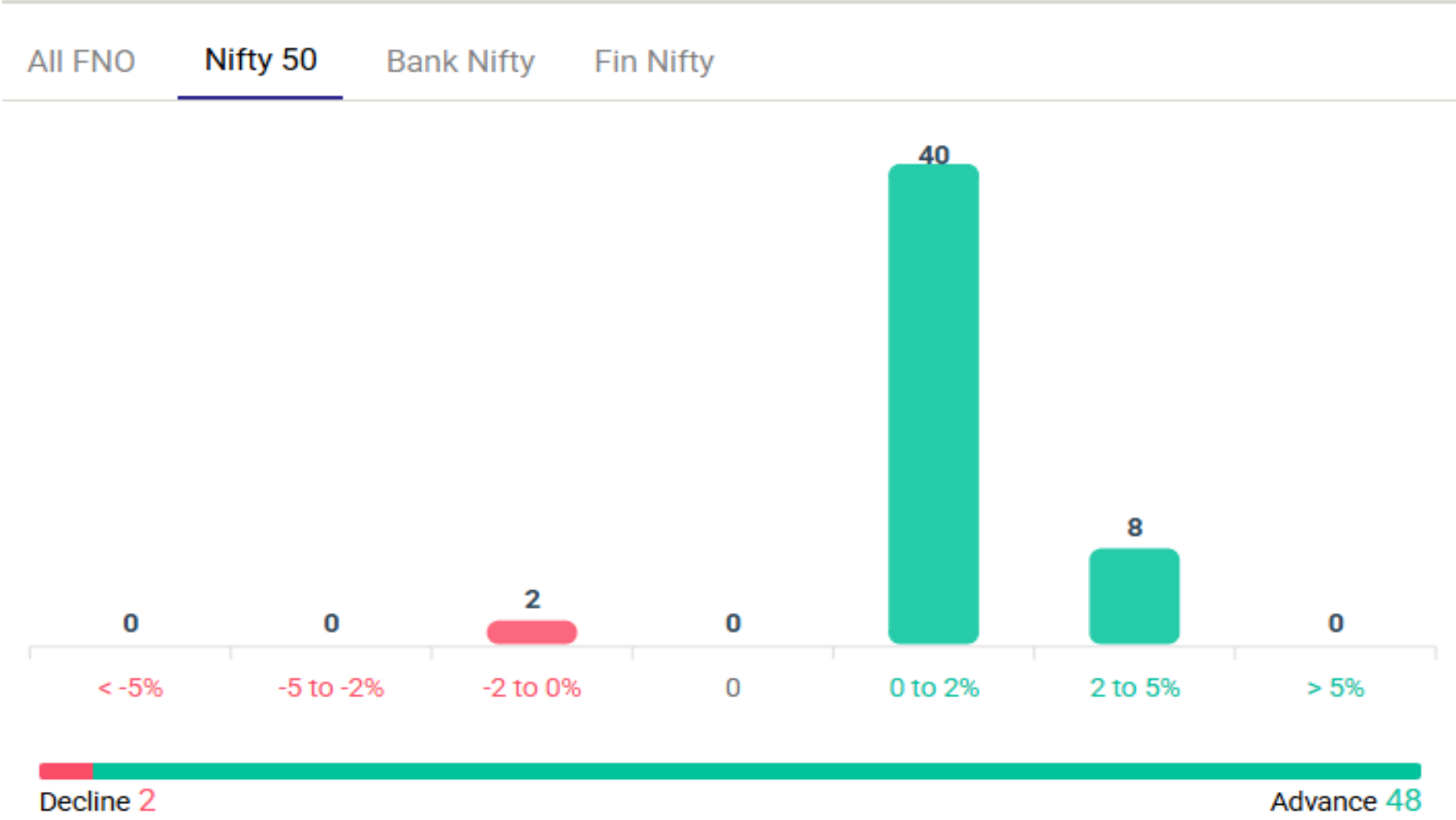


# Nifty Advance Decline & Ban update

Stocks in Ban: ABFRL, BIOCON, CDSL, HUDCO, MANAPPURAM, RBLBANK, TITAGARH

Advance & Decline

View more >

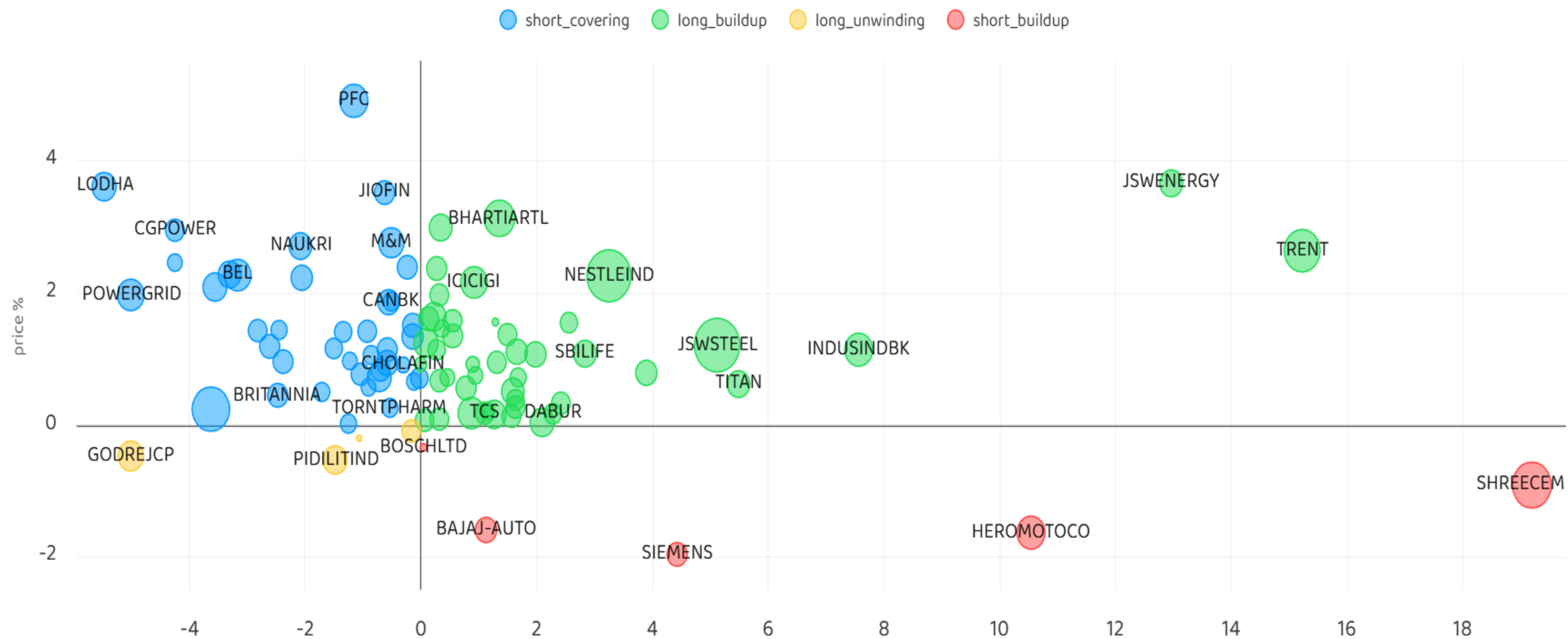




# Stocks : Derivatives Outlook



23-Jun-25



Investment in securities market are subject to market risks, read all the related documents carefully before investing.



# Stocks : Options on radar



Stock	Call Strike	Trade	Buying Range	SL	TGT	Logic
BHARTIARTL	1940 CE (31st JUL)	Buy	45-46	39	58	Short Covering
RELIANCE	1450 CE (31st JUL)	Buy	47-48	42	58	Long Built up
M&M	3200 CE (31st JUL)	Buy	93-94	80	120	Long Built up

Stock	Put Strike	Trade	Buying Range	SL	TGT	Logic
UNITDSPR	1460 PE (31st JUL)	Buy	37-38	31	50	Short Built up
MARUTI	12700 PE (31st JUL)	Buy	270-273	220	370	Short Built up



# Quant Outlook



# Quant Intraday Sell Ideas



## What is this?

Based on technical indicators this strategy gives 2 stocks that have a high likelihood to fall during the day (from open to close). This is an intraday Sell strategy which can provide a good cushioning during a black swan event.

## Today's **Sell** Ideas:

Stock Names	Close Price	SL (1%)	TP (1%)
GRANULES <b>(Sell)</b>	487.4	492.2	482.5
ADANIPORTS <b>(Sell)</b>	1349.3	1362.8	1335.8

## What are the rules?

- Stock names will be given at market open (9:15 am)
- Recommended time to entry: between 9:15 to 9:30 am.
- Entry: We short 2 stocks daily (intraday)
- Exit: we will exit at 3:15 as this is an intraday call
- SL: is placed at 1% of the open.
- Book profit: At 1% fall since open.
- In special situations the book profit might be delayed if the stock is in free fall.



Siddhartha Khemka  
Head – Retail Research

Chandan Taparia, CMT, CFTE  
Head – Derivatives & Technical Analyst

Neil Jha  
Head – Quant

Disclosures:

The following Disclosures are being made in compliance with the SEBI Research Analyst Regulations 2014 (herein after referred to as the Regulations).

Motilal Oswal Financial Services Ltd. (MOFSL) is a SEBI Registered Research Analyst having registration no. INH000000412. MOFSL, the Research Entity (RE) as defined in the Regulations, is engaged in the business of providing Stock broking services, Depository participant services & distribution of various financial products. MOFSL is a listed public company, the details in respect of which are available on [www.motilaloswal.com](http://www.motilaloswal.com). MOFSL is registered with the Securities & Exchange Board of India (SEBI) and is a registered Trading Member with National Stock Exchange of India Ltd. (NSE) and Bombay Stock Exchange Limited (BSE), Multi Commodity Exchange of India Limited (MCX) and National Commodity & Derivatives Exchange Limited (NCDEX) for its stock broking activities & is Depository participant with Central Depository Services Limited (CDSL) National Securities Depository Limited (NSDL),NERL, COMRIS and CCRL and is member of Association of Mutual Funds of India (AMFI) for distribution of financial products and Insurance Regulatory & Development Authority of India (IRDA) as Corporate Agent for insurance products. Details of associate entities of Motilal Oswal Financial Services Ltd. are available on the website at <http://onlinereports.motilaloswal.com/Dormant/documents/Associate%20Details.pdf>

Details of pending Enquiry Proceedings of Motilal Oswal Financial Services Limited are available on the website at <https://galaxy.motilaloswal.com/ResearchAnalyst/PublishViewLitigation.aspx>

MOFSL, its associates, Research Analyst or their relatives may have any financial interest in the subject company. MOFSL and/or its associates and/or Research Analyst or their relatives may have actual beneficial ownership of 1% or more securities in the subject company at the end of the month immediately preceding the date of publication of the Research Report or date of the public appearance. MOFSL and its associate company(ies), their directors and Research Analyst and their relatives may have any other potential conflict of interests at the time of publication of the research report or at the time of public appearance, however the same shall have no bearing whatsoever on the specific recommendations made by the analyst(s), as the recommendations made by the analyst(s) are completely independent of the views of the associates of MOFSL even though there might exist an inherent conflict of interest in some of the stocks mentioned in the research report..

In the past 12 months, MOFSL or any of its associates may have:

- a. Received any compensation/other benefits from the subject company of this report
- b. Managed or co managed public offering of securities from subject company of this research report,
- c. Received compensation for investment banking or merchant banking or brokerage services from subject company of this research report,
- d. Received compensation for products or services other than investment banking or merchant banking or brokerage services from the subject company of this research report.
- MOFSL and its associates have not received any compensation or other benefits from the subject company or third party in connection with the research report.
- Subject Company may have been a client of MOFSL or its associates during twelve months preceding the date of distribution of the research report.
- Research Analyst may have served as director/officer/employee in the subject company.
- MOFSL and research analyst may engage in market making activity for the subject company.

MOFSL and its associate company(ies), and Research Analyst and their relatives from time to time may

a) a long or short position in, act as principal in, and buy or sell the securities or derivatives thereof of companies mentioned herein.

(b) be engaged in any other transaction involving such securities and earn brokerage or other compensation or act as a market

maker in the financial instruments of the company(ies) discussed herein or act as an advisor or lender/borrower to such ies) or may have any other potential conflict of interests with respect to any recommendation and other related information and opinions.; however the same shall have no bearing whatsoever on the specific recommendations made by the analyst(s), as the recommendations made by the analyst (are completely independent of the views of the associates of MOFSL even though there might exist an inherent conflict of interest in some of the stocks mentioned in the research report.

Above disclosures include beneficial holdings lying in demat account of MOFSL which are opened for proprietary investments only. While calculating beneficial holdings, It does not consider demat accounts which are opened in name of MOFSL for other purposes ( i.e holding client securities, collaterals, error trades etc.). MOFSL also earns DP income from clients which are not considered in above disclosures.

To enhance transparency, MOFSL has incorporated a Disclosure of Interest Statement in this document. This should, however, not be treated as endorsement of the views expressed in the report. MOFSL and / or its affiliates do and seek to do business including investment banking with companies covered in its research reports. As a result, the recipients of this report should be aware that MOFSL may have a potential conflict of interest that may affect the objectivity of this report.

Terms & Conditions:

This report has been prepared by MOFSL and is meant for sole use by the recipient and not for circulation. The report and information contained herein is strictly confidential and may not be altered in any way, transmitted to, copied or distributed, in part or in whole, to any other person or to the media or reproduced in any form, without prior written consent of MOFSL. The report is based on the facts, figures and information that are considered true, correct, reliable and accurate. The intent of this report is not recommendatory in nature. The information is obtained from publicly available media or other sources believed to be reliable. Such information has not been independently verified and no guaranty, representation of warranty, express or implied, is made as to its accuracy, completeness or correctness. All such information and opinions are subject to change without notice. The report is prepared solely for informational purpose and does not constitute an offer document or solicitation of offer to buy or sell or subscribe for securities or other financial instruments for the clients. Though disseminated to all the customers simultaneously, not all customers may receive this report at the same time. MOFSL will not treat recipients as customers by virtue of their receiving this report.

Analyst Certification

The views expressed in this research report accurately reflect the personal views of the analyst(s) about the subject securities or issues, and no part of the compensation of the research analyst(s) was, is, or will be directly or indirectly related to the specific recommendations and views

expressed by research analyst(s) in this report. Disclosure of Interest Statement

Analyst ownership of the stock No

A graph of daily closing prices of securities is available at [www.nseindia.com](http://www.nseindia.com), [www.bseindia.com](http://www.bseindia.com). Research Analyst views on Subject Company may vary based on Fundamental research and Technical Research. Proprietary trading desk of MOFSL or its associates maintains arm’s length distance with Research Team as all the activities are segregated from MOFSL research activity and therefore it can have an independent view with regards to subject company for which Research Team have expressed their views.

Regional Disclosures (outside India)

This report is not directed or intended for distribution to or use by any person or entity resident in a state, country or any jurisdiction, where such distribution, publication, availability or use would be contrary to law, regulation or which would subject MOFSL & its group companies to registration or

licensing requirements within such jurisdictions. For Hong Kong:

This report is distributed in Hong Kong by Motilal Oswal capital Markets (Hong Kong) Private Limited, a licensed corporation (CE AYY 301) licensed and regulated by the Hong Kong Securities and Futures Commission (SFC) pursuant to the Securities and Futures Ordinance (Chapter 571 of the Laws of Hong Kong) “SFO”. As per SEBI (Research Analyst Regulations) 2014 Motilal Oswal Financial Services Limited (SEBI Reg No. INH000000412) has an agreement with Motilal Oswal capital Markets (Hong Kong) Private Limited for distribution of research report in Hong Kong. This report is intended for distribution only to “Professional Investors” as defined in Part I of Schedule 1 to SFO. Any investment or investment activity to which this document relates is only available to professional investor and will be engaged only with professional investors.” Nothing here is an offer or solicitation of these securities, products and services in any jurisdiction where the offer or sale is not qualified or exempt from registration. The Indian Analyst(s) who compile this report is/are not located in Hong Kong & are not conducting Research Analysis in Hong Kong.

Investment in securities market are subject to market risks, read all the related documents carefully before investing.



For U.S.

MOTILAL Oswal Financial Services Limited (MOFSL) is not a registered broker - dealer under the U.S. Securities Exchange Act of 1934, as amended (the"1934 act") and under applicable state laws in the United States. In addition MOFSL is not a registered investment adviser under the U.S. Investment Advisers Act of 1940, as amended (the "Advisers Act" and together with the 1934 Act, the "Acts), and under applicable state laws in the United States. Accordingly, in the absence of specific exemption under the Acts, any brokerage and investment services provided by MOFSL, including the products and services described herein are not available to or intended for U.S. persons. This report is intended for distribution only to "Major Institutional Investors" as defined by Rule 15a-6(b)(4) of the Exchange Act and interpretations thereof by SEC (henceforth referred to as "major institutional investors"). This document must not be acted on or relied on by persons who are not major institutional investors. Any investment or investment activity to which this document relates is only available to major institutional investors and will be engaged in only with major institutional investors. In reliance on the exemption from registration provided by Rule 15a-6 of the U.S. Securities Exchange Act of 1934, as amended (the "Exchange Act") and interpretations thereof by the U.S. Securities and Exchange Commission ("SEC") in order to conduct business with Institutional Investors based in the U.S., MOFSL has entered into a chaperoning agreement with a U.S. registered broker-dealer, Motilal Oswal Securities International Private Limited. ("MOSIPL"). Any business interaction pursuant to this report will have to be executed within the provisions of this chaperoning agreement.

The Research Analysts contributing to the report may not be registered /qualified as research analyst with FINRA. Such research analyst may not be associated persons of the U.S. registered broker-dealer, MOSIPL, and therefore, may not be subject to NASD rule 2711 and NYSE Rule 472 restrictions on communication with a subject company, public appearances and trading securities held by a research analyst account.

For Singapore

In Singapore, this report is being distributed by Motilal Oswal Capital Markets Singapore Pte Ltd (“MOCMSPL”) (Co.Reg. NO. 201129401Z) which is a holder of a capital markets services license and an exempt financial adviser in Singapore, as per the approved agreement under Paragraph 9 of Third Schedule of Securities and Futures Act (CAP 289) and Paragraph 11 of First Schedule of Financial Advisors Act (CAP 110) provided to MOCMSPL by Monetary Authority of Singapore. Persons in Singapore should contact MOCMSPL in respect of any matter arising from, or in connection with this report/publication/communication. This report is distributed solely to persons who qualify as “Institutional Investors”, of which some of whom may consist of "accredited" institutional investors as defined in section 4A(1) of the Securities and Futures Act, Chapter 289 of Singapore (“the SFA”).

Accordingly, if a Singapore person is not or ceases to be such an institutional investor, such Singapore Person must immediately discontinue any use of this Report and inform MOCMSPL.

Disclaimer:

This report is intended for distribution to Retail Investors.

The report and information contained herein is strictly confidential and meant solely for the selected recipient and may not be altered in any way, transmitted to, copied or distributed, in part or in whole, to any other person or to the media or reproduced in any form, without prior written consent. This report and information herein is solely for informational purpose and may not be used or considered as an offer document or solicitation of offer to buy or sell or subscribe for securities or other financial instruments. Nothing in this report constitutes investment, legal, accounting and tax advice or a representation that any investment or strategy is suitable or appropriate to your specific circumstances. The securities discussed and opinions expressed in this report may not be suitable for all investors, who must make their own investment decisions, based on their own investment objectives, financial positions and needs of specific recipient. This may not be taken in substitution for the exercise of independent judgment by any recipient. Each recipient of this document should make such investigations as it deems necessary to arrive at an independent evaluation of an investment in the securities of companies referred to in this document (including the merits and risks involved), and should consult its own advisors to determine the merits and risks of such an investment. The investment discussed or views expressed may not be suitable for all investors. Certain transactions -including those involving futures, options, another derivative products as well as non-investment grade securities - involve substantial risk and are not suitable for all investors. No representation or warranty, express or implied, is made as to the accuracy, completeness or fairness of the information and opinions contained in this document. The Disclosures of Interest Statement incorporated in this document is provided solely to enhance the transparency and should not be treated as endorsement of the views expressed in the report. This information is subject to change without any prior notice. The Company reserves the right to make modifications and alternations to this statement as may be required from time to time without any prior approval. MOFSL, its associates, their directors and the employees may from time to time, effect or have effected an own account transaction in, or deal as principal or agent in or for the securities mentioned in this document. They may perform or seek to perform investment banking or other services for, or solicit investment banking or other business from, any company referred to in this report. Each of these entities functions as a separate, distinct and independent of each other. The recipient should take this into account before interpreting the document. This report has been prepared on the basis of information that is already available in publicly accessible media or developed through analysis of MOFSL. The views expressed are those of the analyst, and the Company may or may not subscribe to all the views expressed therein. This document is being supplied to you solely for your information and may not be reproduced, redistributed or passed on, directly or indirectly, to any other person or published, copied, in whole or in part, for any purpose. This report is not directed or intended for distribution to, or use by, any person or entity who is a citizen or resident of or located in any locality, state, country or other jurisdiction, where such distribution, publication, availability or use would be contrary to law, regulation or which would subject MOFSL to any registration or licensing requirement within such jurisdiction. The securities described herein may or may not be eligible for sale in all jurisdictions or to certain category of investors. Persons in whose possession this document may come are required to inform themselves of and to observe such restriction. Neither the Firm, not its directors, employees, agents or representatives shall be liable for any damages whether direct or indirect, incidental, special or consequential including lost revenue or lost profits that may arise from or in connection with the use of the information. The person accessing this information specifically agrees to exempt MOFSL or any of its affiliates or employees from, any and all responsibility/liability arising from such misuse and agrees not to hold MOFSL or any of its affiliates or employees responsible for any such misuse and further agrees to hold MOFSL or any of its affiliates or employees free and harmless from all losses, costs, damages, expenses that may be suffered by the person accessing this information due to any errors and delays.

This report is meant for the clients of Motilal Oswal only.

Investment in securities market are subject to market risks. Read all the related documents carefully before investing.

Registration granted by SEBI and certification from NISM in no way guarantee performance of the intermediary or provide any assurance of returns to investors.

Registered Office Address: Motilal Oswal Tower, Rahimtullah Sayani Road, Opposite Parel ST Depot, Prabhadevi, Mumbai-400025; Tel No.: 022 - 71934200 / 71934263; www.motilaloswal.com. Correspondence Address: Palm Spring Centre, 2nd Floor, Palm Court Complex, New Link Road, Malad (West), Mumbai- 400 064. Tel No: 022 71881000. Details of Compliance Officer: Neeraj Agarwal, Email Id: na@motilaloswal.com, Contact No.:022-40548085.

Grievance Redressal Cell:

Contact Person	Contact No.	Email ID
Ms. Hemangi Date	022 40548000 / 022 67490600	query@motilaloswal.com
Ms. Kumud Upadhyay	022 40548082	servicehead@motilaloswal.com
Mr. Ajay Menon	022 40548083	am@motilaloswal.com

Registration details of group entities.: Motilal Oswal Financial Services Ltd. (MOFSL): INZ000158836 (BSE/NSE/MCX/NCDEX); CDSL and NSDL: IN-DP-16-2015; Research Analyst: INH000000412 . AMFI: ARN .: 146822. IRDA Corporate Agent – CA0579. Motilal Oswal Financial Services Ltd. is a distributor of Mutual Funds, PMS, Fixed Deposit, Insurance, Bond, NCDs and IPO products.

Customer having any query/feedback/ clarification may write to query@motilaloswal.com. In case of grievances for any of the services rendered by Motilal Oswal Financial Services Limited (MOFSL) write to grievances@motilaloswal.com, for DP to dpgrievances@motilaloswal.com.