

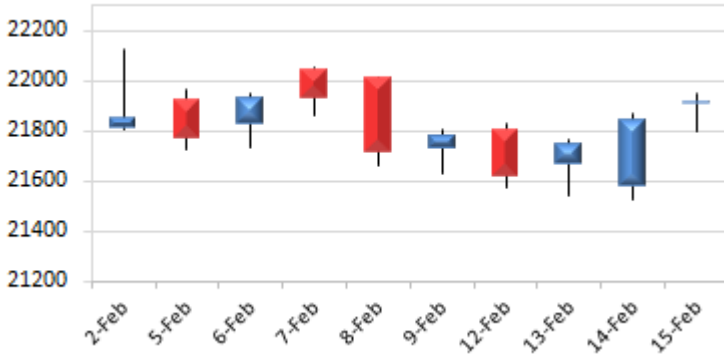
Date: 16th Feb 2024

* Sensex 72050.38 + 227.55

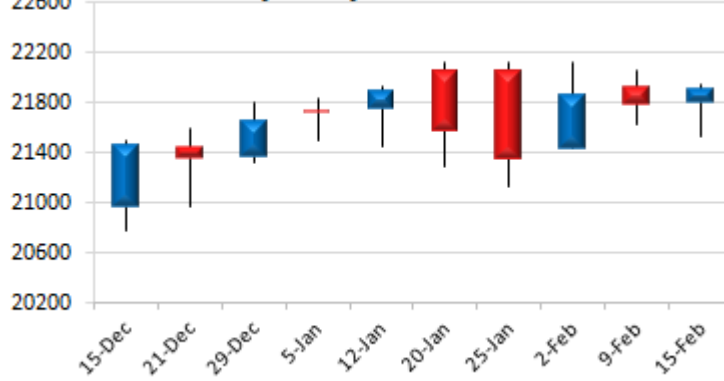
* Nifty 21910.75 + 70.70

* Bank Nifty 46218.90 + 310.60

Nifty daily last 10 days



Nifty Weekly last 10 weeks



*Blue candle → Close rate > Open rate * Red candle → Close rate < Open rate

Market Preview

Nifty gains strength

Nifty had a rangebound session in the initial half to witness some gains in the final hours to end on a positive note with sentiment improving and aiming to scale the previous peak zone of 22150 levels in the coming days. BankNifty also ended on a positive note after a long time with a close above 46200 zone moving past the important 50EMA level. Sectorwise PSU Banks, Energy, Auto, Realty and Infra were among the major gainers while FMCG was among the major laggards. The market breadth was quite strong with the advance decline indicating a ratio of 5:2 at close.

Market Forecast

Nifty daily range 21800-22100

Nifty maintained above the 21800 zone for the entire trading session with bias remaining positive with the broader markets also showing active participation to improve the sentiment overall. The index needs to sustain above the 21800 level as of now and expect for retesting the previous peak level of 22150 zone in the coming days. BankNifty, maintaining above the 46000 zone for most part of the session improved the bias with a decent close above the significant 50EMA level of 46070 zone after a month's time. With the indicators showing signs of improvement, it is expected to achieve the next targets of 46800 and thereafter 48000 levels in the coming days. The support for the day is seen at 21800 while the resistance is seen at 22100. BankNifty would have the daily range of 45800-46800 levels.

Daily Trend turned Up

Scrip Name	LCP	Curr Trnd	Reversal
ARVIND	301.75	-10	292.55
BANKINDIA	142.95	-8	135.9
CESC	133.6	-7	130.95
COALINDIA	476.85	-3	472.6
CONCOR	955.15	-3	945.5
ESCORTS	2904.6	-7	2836.8
GAIL	184.25	-6	178.7
GODFRYPHLP	2571.65	-2	2510.5
GODREJCP	1231.8	-5	1219.85
HAL	3023.2	-4	2973.75
HDFCBANK	1414.05	-6	1390.05
HINDZINC	314.9	-8	311.25

* Trends turned Up after a significant period

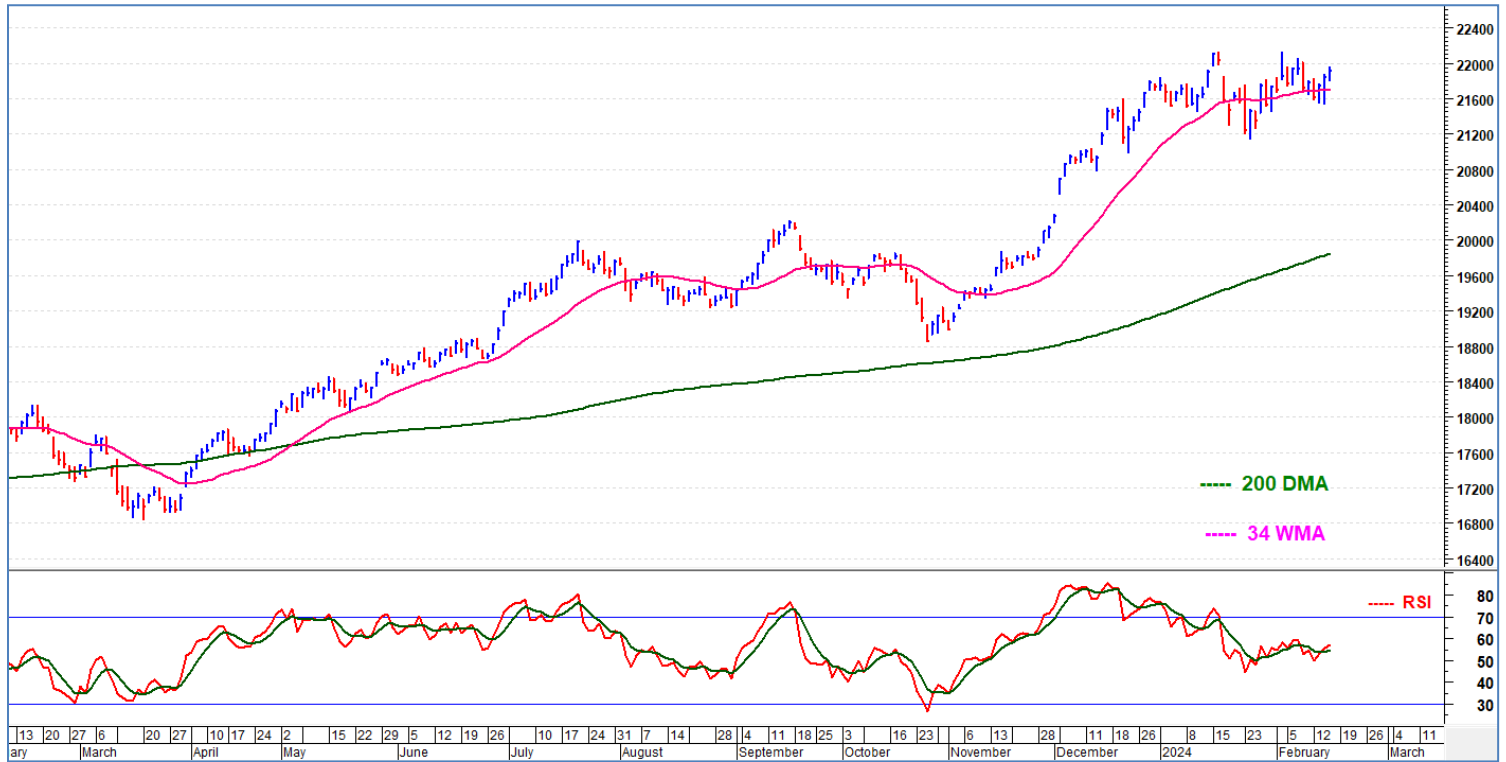
Daily Trend turned Up

Scrip Name	LCP	Curr Trnd	Reversal
IGL	444.7	-5	441.35
IRCTC	951.5	-16	932.45
M&M	1765.05	-5	1681.4
MANAPPURAM	186.2	-5	183.55
MRPL	244.4	-4	205.6
NTPC	339.25	-4	328.95
OIL	563.15	-3	539.2
ONGC	277.3	-4	276.1
PNB	128.85	-4	127.3
POWERGRID	281.65	-7	275.4
UBL	1763.95	-8	1748.3
VIPIND	533.85	-4	532.55

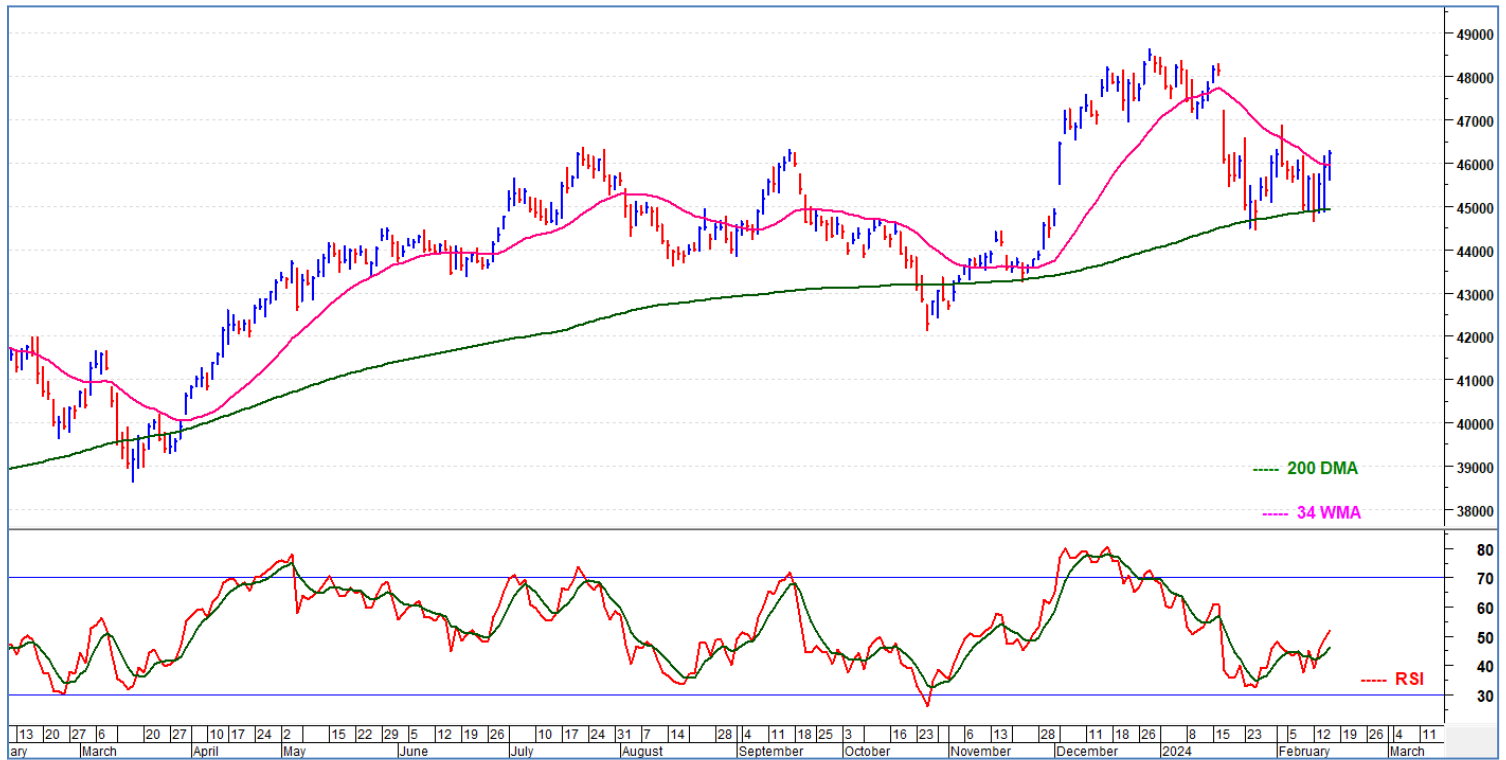
* Trends turned Up after a significant period

Indices	Period	Closing	% Chng	Trend	Reversal	2 Sup	1 Sup	Pivot	1 Res	2 Res
Nifty	Daily	21910.75	0.32%	2	21829.40	21727	21819	21886	21978	22045
	Weekly	21782.50	-0.33%	-4	22158.60	21399	21591	21822	22014	22245
	Monthly	21725.70	-0.03%	3	21154.55	20675	21201	21662	22188	22649
Bank Nifty	Daily	46218.90	0.68%	3	45355.05	45328	45774	46036	46481	46743
	Weekly	45634.55	-0.73%	-4	47187.45	45270	45452	45817	45999	46363
	Monthly	45996.80	-4.75%	-1	47222.95	42271	44134	46292	48155	50313
Sensex	Daily	72050.38	0.32%	2	71717.40	71433	71742	71953	72262	72474
	Weekly	71595.49	-0.68%	-4	73299.20	70467	71031	71795	72360	73124
	Monthly	71752.11	-0.68%	3	70393.90	68301	70027	71727	73453	75153

Nifty Daily chart with RSI indicator:

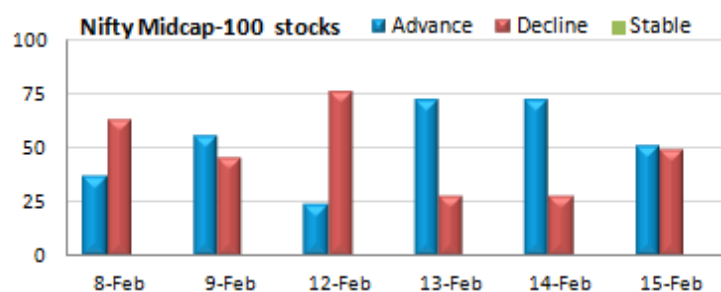
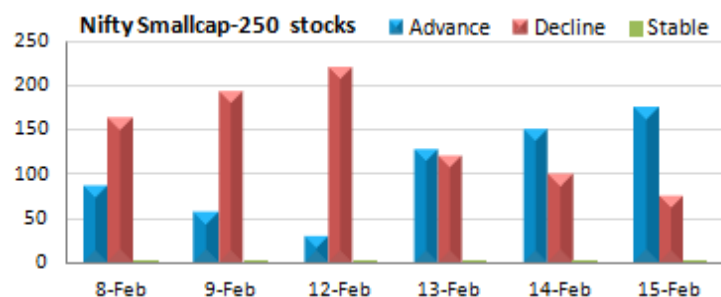


BankNifty Daily chart with RSI indicator:



Gainers - Losers (Nifty 500 stocks)

Gainers				Losers			
Scrip Name	LCP	% Change	Volume	Scrip Name	LCP	% Change	Volume
MRPL	244.4	19.83	65831119	Rajesh Exports	310.65	-7.78	2949287
Oil India	563.15	12.91	28011324	Zee Entertain	187.25	-6.47	20826993
NMDC Steel	65.7	11.36	85382469	One 97 Paytm	325.05	-5	10054842
Gujarat Pipavav	191.15	9.89	26302545	Narayana Hruda	1352.6	-4.54	982697
Aegis Logistics	426.7	8.87	4732854	Vedanta	269.3	-3.7	102748943
Saregama India	390.8	8.74	2545817	Polyplex Corp	927.85	-3.68	271948
NLC India	254.9	7.71	12185263	Solar Ind	6777.75	-3.45	93652



Breakouts - Cross above 200 DMA

Company Name	LCP	Change %	200 DMA
Saregama India	393.65	7.54	366.05
SOLARA ACTIVE P	392.6	7.32	365.81
HEG	1695.4	3.64	1635.83
Sahyadri Ind	415	3.04	402.75
Mahindra Logist	394.2	2.87	383.19
Ortin Labs	21.05	2.58	20.52
Indigo Paints	1499.2	2.21	1466.73
Vadivarhe Speci	38.9	2.18	38.07
Refex Ind	613.7	1.87	602.44
NELCO	766.7	1.7	753.86
Rane Brake	821.15	1.68	807.59
Indo Rama Synth	50.8	1.3	50.15
Kanoria Chem	126.35	1.2	124.85
Tanla Platforms	1005.5	1.16	994.01
GNFC	652.55	0.97	646.28
Anlon Technolog	253.7	0.93	251.36
G R Infracprojec	1211.45	0.91	1200.5
GM Breweries	638.6	0.86	633.13

Breakouts - Cross below 200 DMA

Company Name	LCP	Change %	200 DMA
V-Mart Retail	2015	-1.39	2043.42
Ambani Organics	115.7	-1.2	117.11
TCNS Clothing C	396.15	-0.46	397.97
Asahi India	540.3	-0.35	542.18
Onward Tech	543.85	-0.16	544.72

* Stocks crossing above its Simple Moving Average (200DMA)

* Stocks crossing below its Simple Moving Average (200DMA)

Sectoral Indices - Gainers Losers for the day



Stocks witnessing a volume surge as compared to their 5 day average volume.

Volume Shockers - NSE					
Company name	LCP	% Chg	Volume	Avg Vol *	% Chg
Ester Ind	98.7	10.22	2661119	155534	1611
Vedanta	269.3	-3.7	102748943	6834478	1403
APTUS VALUE	359.15	0.35	6553486	757780	765
Genesys Int	512.7	7.12	788424	96972	713
Vaswani Ind	40.25	19.97	1636268	208530	685
TPL Plastech	72.9	10.87	4555929	620448	634
MRPL	244.7	19.98	65716267	9045980	626
Hind Oil Explor	205.9	11.6	14282267	1977387	622
Kanani Industr	5.6	-0.88	3345853	476515	602
RKEC Projects	94.95	19.96	1567730	237969	559
Jindal Poly Inv	771.95	8.98	151472	23249	552
Gland	1885	-3.34	1179981	191545	516
Thejo Engg	2172	7.6	77137	12657	509
Nucleus Softwar	1329.25	-5	55123	9073	508
Dishman Carboge	206.1	7.04	3798156	625841	507
Dangee Dums	12.65	2.02	4126966	715079	477
Urja Global	27.75	4.91	8278537	1435046	477
Superhouse	218.55	-4.27	89376	15602	473
Pritish Nandy	59.1	4.97	361462	64247	463
Auro Impex	106.3	8.97	204800	37120	452

* the Average Volume of last 5 days

Watch out for the stocks that have seen a huge spurt in its share price over the last three days

Price Shockers - NSE				
Company name	LCP	3 days *	% Chg	Volume
Force Motors	4975.7	3352.35	48.42	209233
KIOCL	504.25	372.25	35.46	3871027
MRPL	244.4	184.95	32.14	65831119
Cambridge Tech	98.55	75	31.4	1924436
Jubilant Ind	931.3	722.15	28.96	717202
Xchanging Sol	161.7	129.8	24.58	6925923
Time Techno	216.1	173.65	24.45	5473547
Thejo Engg	2207.05	1804.6	22.3	83109
Phantom Digital	536.1	438.95	22.13	303300
Inox India	1159.95	962.85	20.47	4887857
Udayshivakumar	63.3	52.7	20.11	1453599
Oil India	563.15	468.9	20.1	28011324
Vaswani Ind	39.45	32.85	20.09	2062267
Cinevista	22.2	18.5	20	467245
Swelect Energy	1099.95	919.2	19.66	535559
Ircon Internati	231.9	194.25	19.38	19804661
Ganesh Housing	763.85	640.3	19.3	140719
NLC India	254.9	213.75	19.25	12185263
Themis Medicare	236.6	199.6	18.54	358841
Chennai Petro	976.45	824.4	18.44	5342680

* the % price rise of the last 3 days

Symbol	LTP	Chng	% Chng	Volume (lacs)	Turnover (crs.)	52w High	Diff with 52w H	52w Low	Diff with 52w L	365 days % chng	30 days % chng
NIFTY 50	21910.75	70.70	0.32%	3453.94	29559.54	22126.80	0.98%	16828.35	30.20%	-1.16%	21.81%
ADANIANT	3190.40	-16.80	-0.52%	20.35	654.25	3277.95	2.67%	1103.75	189.05%	3.81%	83.30%
ADANIPTS	1266.20	-1.65	-0.13%	33.83	429.20	1291.25	1.94%	533.65	137.27%	5.38%	124.36%
APOLLOHOSP	6630.00	-124.10	-1.84%	4.46	296.75	6775.00	2.14%	4168.00	59.07%	14.55%	58.22%
ASIANPAINT	3017.85	41.45	1.39%	10.69	320.40	3568.00	15.42%	2700.10	11.77%	-9.09%	7.18%
AXISBANK	1074.75	-22.10	-2.01%	117.81	1270.92	1151.85	6.69%	814.30	31.98%	-2.02%	25.97%
BAJAJ-AUTO	8097.00	13.70	0.17%	3.95	320.07	8156.85	0.73%	3625.60	123.33%	10.25%	108.54%
BAJAJFINSV	1570.05	-9.65	-0.61%	8.04	126.35	1741.00	9.82%	1215.00	29.22%	-3.23%	12.95%
BAJFINANCE	6619.95	-26.55	-0.40%	8.81	582.68	8192.00	19.19%	5485.70	20.68%	-11.12%	2.91%
BHARTIARTL	1122.10	6.25	0.56%	50.57	567.05	1200.65	6.54%	735.80	52.50%	1.22%	43.94%
BPCL	650.95	27.30	4.38%	256.23	1652.70	656.95	0.91%	314.05	107.28%	35.59%	88.33%
BRITANNIA	4945.00	-65.65	-1.31%	1.90	94.08	5386.05	8.19%	4153.00	19.07%	-3.22%	8.93%
CIPLA	1424.95	-0.40	-0.03%	14.02	198.89	1463.55	2.64%	852.00	67.25%	8.54%	38.61%
COALINDIA	477.00	10.65	2.28%	185.02	880.36	481.25	0.88%	207.60	129.77%	21.24%	120.24%
DIVISLAB	3705.00	-14.65	-0.39%	2.88	107.15	4074.40	9.07%	2730.00	35.71%	-4.86%	33.24%
DRREDDY	6236.20	-22.15	-0.35%	2.94	183.67	6409.85	2.71%	4297.00	45.13%	8.22%	37.90%
EICHERMOT	3911.00	9.45	0.24%	4.06	158.58	4200.00	6.88%	2836.00	37.91%	1.81%	22.86%
GRASIM	2085.00	5.20	0.25%	5.06	105.58	2199.00	5.18%	1527.05	36.54%	-1.01%	29.61%
HCLTECH	1665.00	-6.50	-0.39%	25.55	425.73	1696.50	1.86%	1016.25	63.84%	5.24%	48.52%
HDFCBANK	1414.65	30.60	2.21%	207.92	2916.21	1757.50	19.51%	1363.55	3.75%	-17.26%	-17.31%
HDFCLIFE	586.10	0.75	0.13%	17.37	101.82	710.60	17.52%	457.80	28.03%	-4.74%	14.32%
HEROMOTOCO	4802.50	-11.55	-0.24%	5.30	255.39	4949.05	2.96%	2246.00	113.82%	10.10%	89.34%
HINDALCO	513.00	5.20	1.02%	133.04	682.85	620.50	17.32%	381.00	34.65%	-11.63%	16.79%
HINDUNILVR	2357.00	-30.95	-1.30%	25.54	603.11	2769.65	14.90%	2346.75	0.44%	-7.20%	-7.43%
ICICIBANK	1019.10	-3.60	-0.35%	100.70	1020.90	1059.40	3.80%	810.30	25.77%	1.27%	18.19%
INDUSINDBK	1480.30	-1.20	-0.08%	19.07	281.00	1694.50	12.64%	990.20	49.50%	-12.28%	28.06%
INFY	1680.00	13.80	0.83%	48.34	809.15	1733.00	3.06%	1185.30	41.74%	0.85%	4.58%
ITC	404.75	-6.80	-1.65%	203.84	827.75	499.70	19.00%	369.65	9.50%	-11.99%	6.50%
JSWSTEEL	811.10	-2.15	-0.26%	14.82	120.54	895.75	9.45%	649.05	24.97%	-1.44%	12.35%
KOTAKBANK	1741.95	-7.00	-0.40%	25.42	440.36	2064.40	15.62%	1643.50	5.99%	-5.54%	-1.21%
LT	3303.95	-5.05	-0.15%	19.99	660.32	3737.90	11.61%	2082.10	58.68%	-6.61%	50.98%
LTIM	5515.00	9.85	0.18%	2.26	125.57	6442.00	14.39%	4132.20	33.46%	-12.83%	18.73%
M&M	1769.85	112.80	6.81%	98.87	1728.56	1784.90	0.84%	1123.40	57.54%	1.31%	21.56%
MARUTI	11064.75	36.80	0.33%	4.47	494.66	11133.00	0.61%	8130.00	36.10%	9.33%	25.68%
NESTLEIND	2453.00	-27.00	-1.09%	8.40	206.33	2769.30	11.42%	1788.00	37.19%	-2.38%	-86.97%
NTPC	340.85	12.85	3.92%	219.73	738.63	341.05	0.06%	164.20	107.58%	3.37%	97.53%
ONGC	276.45	7.60	2.83%	328.31	907.98	279.85	1.21%	145.50	90.00%	15.14%	81.10%
POWERGRID	281.45	12.30	4.57%	254.76	710.52	289.40	2.75%	159.30	76.68%	13.48%	27.28%
RELIANCE	2944.50	-18.25	-0.62%	50.03	1474.01	2969.45	0.84%	2180.00	35.07%	6.26%	24.58%
SBILIFE	1458.90	5.20	0.36%	7.36	106.93	1495.35	2.44%	1054.00	38.42%	1.65%	25.14%
SBIN	760.40	17.00	2.29%	339.41	2559.65	764.00	0.47%	501.55	51.61%	16.14%	37.45%
SUNPHARMA	1507.00	-13.40	-0.88%	21.62	326.62	1555.10	3.09%	922.45	63.37%	14.37%	51.02%
TATACONSUM	1134.35	-1.25	-0.11%	12.78	145.07	1190.95	4.75%	686.60	65.21%	-1.32%	57.50%
TATAMOTORS	920.55	2.25	0.25%	64.31	592.35	950.00	3.10%	400.45	129.88%	13.03%	108.44%
TATASTEEL	141.10	-0.10	-0.07%	315.87	448.70	147.40	4.27%	101.55	38.95%	4.67%	29.24%
TCS	4106.00	5.90	0.14%	10.92	448.35	4184.75	1.88%	3070.25	33.74%	5.03%	17.14%
TECHM	1299.35	6.45	0.50%	17.04	221.59	1416.30	8.26%	981.05	32.44%	-3.35%	27.75%
TITAN	3619.95	34.40	0.96%	7.59	272.79	3886.95	6.87%	2321.00	55.97%	-4.61%	43.03%
ULTRACEMCO	9811.80	24.00	0.25%	4.15	405.41	10526.00	6.79%	6991.00	40.35%	-1.68%	37.10%
UPL	488.40	7.00	1.45%	35.68	174.03	780.00	37.38%	452.15	8.02%	-15.21%	-36.79%
WIPRO	517.70	3.20	0.62%	72.85	377.99	529.00	2.14%	352.00	47.07%	4.02%	27.01%

Note: 52 week high & 52 week low prices are adjusted for Bonus, Split & Rights Corporate actions.

Color code for Stocks closer to 52-week high :

	- within 0% and 2%
	- within 2% and 5%
	- within 5% and 7%

Color code for Stocks closer to 52-week low :

	- within 0% and 2%
	- within 2% and 5%
	- within 5% and 7%

365 days % Change and 30 days % Change value are adjusted With respect to corporate actions

Disclaimer / Disclosures:

ANALYST CERTIFICATION

I, Mrs. Vaishali Parekh B.com, Research Analyst, author and the name subscribed to this report, hereby certify that all of the views expressed in this research report accurately reflect our views about the subject issuer(s) or securities. We also certify that no part of our compensation was, is, or will be directly or indirectly related to the specific recommendation(s) or view(s) in this report.

Terms & conditions and other disclosures:

Prabhudas Lilladher Pvt. Ltd, Mumbai, India (hereinafter referred to as "PL") is engaged in the business of Stock Broking, Portfolio Manager, Depository Participant and distribution for third party financial products. PL is a subsidiary of Prabhudas Lilladher Advisory Services Pvt Ltd. which has its various subsidiaries engaged in business of commodity broking, investment banking, financial services (margin funding) and distribution of third party financial/other products, details in respect of which are available at www.plindia.com

This document has been prepared by the Research Division of PL and is meant for use by the recipient only as information and is not for circulation. This document is not to be reported or copied or made available to others without prior permission of PL. It should not be considered or taken as an offer to sell or a solicitation to buy or sell any security.

The information contained in this report has been obtained from sources that are considered to be reliable. However, PL has not independently verified the accuracy or completeness of the same. Neither PL nor any of its affiliates, its directors or its employees accepts any responsibility of whatsoever nature for the information, statements and opinion given, made available or expressed herein or for any omission therein.

Recipients of this report should be aware that past performance is not necessarily a guide to future performance and value of investments can go down as well. The suitability or otherwise of any investments will depend upon the recipient's particular circumstances and, in case of doubt, advice should be sought from an independent expert/advisor.

Either PL or its affiliates or its directors or its employees or its representatives or its clients or their relatives may have position(s), make market, act as principal or engage in transactions of securities of companies referred to in this report and they may have used the research material prior to publication.

PL may from time to time solicit or perform investment banking or other services for any company mentioned in this document.

PL is registered as Research Analyst under Securities and Exchange Board of India (Research Analysts) Regulations, 2014 PL submits that no material disciplinary action has been taken on us by any Regulatory Authority impacting Equity Research Analysis activities.

PL or its research analysts or its associates or his relatives do not have any financial interest in the subject company.

PL or its research analysts or its associates or his relatives do not have actual/beneficial ownership of one per cent or more securities of the subject company at the end of the month immediately preceding the date of publication of the research report.

PL or its research analysts or its associates or his relatives do not have any material conflict of interest at the time of publication of the research report.

PL or its associates might have received compensation from the subject company in the past twelve months.

PL or its associates might have managed or co-managed public offering of securities for the subject company in the past twelve months or mandated by the subject company for any other assignment in the past twelve months.

PL or its associates might have received any compensation for investment banking or merchant banking or brokerage services from the subject company in the past twelve months.

PL or its associates might have received any compensation for products or services other than investment banking or merchant banking or brokerage services from the subject company in the past twelve months PL or its associates might have received any compensation or other benefits from the subject company or third party in connection with the research report.

PL encourages independence in research report preparation and strives to minimize conflict in preparation of research report. PL or its analysts did not receive any compensation or other benefits from the subject Company or third party in connection with the preparation of the research report. PL or its Research Analysts do not have any material conflict of interest at the time of publication of this report.

It is confirmed that Mrs. Vaishali Parekh B.com, Research Analyst of this report has not received any compensation from the companies mentioned in the report in the preceding twelve months compensation of our Research Analysts is not based on any specific merchant banking, investment banking or brokerage service transactions.

The Research analysts for this report certifies that all of the views expressed in this report accurately reflect his or her personal views about the subject company or companies and its or their securities, and no part of his or her compensation was, is or will be, directly or indirectly related to specific recommendations or views expressed in this report.

The research analysts for this report has not served as an officer, director or employee of the subject company PL or its research analysts have not engaged in market making activity for the subject company

Our sales people, traders, and other professionals or affiliates may provide oral or written market commentary or trading strategies to our clients that reflect opinions that are contrary to the opinions expressed herein, and our proprietary trading and investing businesses may make investment decisions that are inconsistent with the recommendations expressed herein. In reviewing these materials, you should be aware that any or all of the foregoing, among other things, may give rise to real or potential conflicts of interest.

PL and its associates, their directors and employees may (a) from time to time, have a long or short position in, and buy or sell the securities of the subject company or (b) be engaged in any other transaction involving such securities and earn brokerage or other compensation or act as a market maker in the financial instruments of the subject company or act as an advisor or lender/borrower to the subject company or may have any other potential conflict of interests with respect to any recommendation and other related information and opinions.