

**Key Indices Update**

Indices	Close	Change (%)
Nifty	23,123.00	1.04↓
Sensex	73,524.26	0.97↓
Midcap	59,905.65	1.40↓
Smallcap	17,763.45	1.92↓

**Trend Strength Indicator**

Nifty 50 Stocks above 200 EMA	NSE Advance / Decline
25	757/2541

**Key Data**

Data	Current	Previous
Dow Jones	50756.5	50690.6
U.S. Dollar Index	99.98	100.12
Brent Crude (USD/BBL)	93.72	96.07
US 10Y Bond Yield (%)	4.58	4.57
India 10Y Bond Yield (%)	6.97	6.95

**Sectoral Data**

Sector	Close	Change (%)
BANKNIFTY	54003.35	0.90↓
NIFTYAUTO	25640.85	2.01↓
NIFTYENERG	39593.50	1.87↓
NIFTYFINSR	26976.85	1.28↓
NIFTYFMCG	48056.65	0.51↓
NIFTYIT	28618.55	1.35↓
NIFTYMEDIA	1469.00	2.23↓
NIFTYMETAL	12861.25	2.73↓
NIFTYPHARM	24119.80	0.53↓
NIFTYREALT	746.05	2.97↓

**Fundamental**

Refer Page 02

**Stock for Investment**

Stock Name	Sector	*CMP (₹)	^TP (₹)	Upside
<b>Kotak Bank</b>	<b>Banks</b>	<b>377</b>	<b>497</b>	<b>32%</b>

\*CMP as on June 08 2026

**Top News**

- ✦ **Samvardhana Motherson International, through Motherson New Energy (MNEL), has commissioned its first 15 MWp captive solar power plant in Uttar Pradesh, supplying renewable energy to its manufacturing facilities.**
- ✦ **Waaree Renewable Technologies has secured an EPC contract from Sunsational Power (SPPL) for a 300 MW/450 MWp ground-mounted solar project, including two years of O&M services.** The project is slated for completion during FY27, strengthening the company's order book in the renewable energy segment.

**Technical**

Refer Page 03-04

- ✦ **Nifty witnessed a sharp risk-off session on Monday,** with benchmark indices ending lower amid weak global cues and renewed geopolitical concerns.
- ✦ **After a gap-down start, the Nifty attempted to recover some losses in the first half;** however, renewed selling pressure in the latter half dragged the index back toward the day's low before it eventually settled at 23,123, down 1.04%.
- ✦ Technically, the **Nifty has moved closer to the lower band of its declining channel near 23,000.**
- ✦ Given the prevailing uncertainty and heightened global volatility, **we continue to maintain a cautious stance and prefer a sell-on-rise approach in the index.**
- ✦ At the same time, **traders should focus on stock-specific opportunities** while maintaining strict risk and position management.
- ✦ **Stock of the day - FORTIS**

# Fundamental

## Top News

- 01** **Samvardhana Motherson International, through Motherson New Energy (MNEL), has commissioned its first 15 MWp captive solar power plant in Uttar Pradesh, supplying renewable energy to its manufacturing facilities.**
- 02** **Waaree Renewable Technologies has secured an EPC contract from Sunsational Power (SPPL) for a 300 MW/450 MWp ground-mounted solar project, including two years of O&M services.** The project is slated for completion during FY27, strengthening the company's order book in the renewable energy segment.
- 03** **Lupin has partnered with Laboratorios ERN S.A. to launch Luforbec for asthma and COPD treatment in Spain,** strengthening its respiratory portfolio and presence in the European market.
- 04** **Embassy Developments aims to achieve ₹8,000 crore of sales bookings in FY27,** driven by ₹19,500 crore worth of planned launches and strong demand for branded residential housing across key markets.
- 05** **TCS has signed a multi-year IT transformation and managed services deal with Canada Life to modernize its European IT infrastructure.** The partnership will leverage TCS' AI and digital capabilities to enhance operational resilience, automation, and customer experience while supporting Canada Life's long-term technology strategy.

### Stock for Investment

### Kotak Mahindra Bank Ltd

<b>Stock Symbol</b>	<b>Kotak Bank</b>
<b>Sector</b>	<b>Banks</b>
<b>*CMP (₹)</b>	<b>377</b>
<b>^Target Price (₹)</b>	<b>497</b>
<b>Upside</b>	<b>32%</b>

- ✦ **Earnings beat with improved asset quality:** Kotak Mahindra Bank reported 13% YoY PAT growth, driven by lower credit costs, reduced slippages, and better GNPA/NNPA.
- ✦ **Loan growth led by secured segments:** Advances rose ~16% YoY, supported by mortgages and SME, with gradual recovery in unsecured lending.
- ✦ **Stable margins and better efficiency:** NIM held near ~4.6%, while cost control improved operating efficiency and profitability.
- ✦ **Positive outlook; BUY maintained:** Strong deposits, improving asset quality, and growth visibility support **BUY** with target price of ₹497.

\*CMP as on June 08, 2026

^Time horizon - upto 11 Months

## Technical

Facing pressure on rise. Maintain caution.

### NIFTY

23123.00 ↘ 243.70 (1.04%)

S1

22800

S2

22500

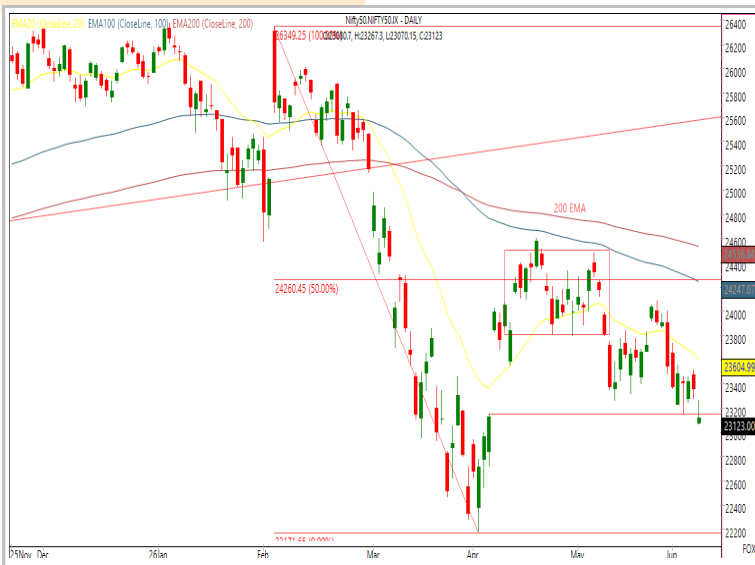
R1

23300

R2

23600

Technical Chart : Daily



- ✦ **Nifty witnessed a sharp risk-off session on Monday**, with benchmark indices ending lower amid weak global cues and renewed geopolitical concerns.
- ✦ **After a gap-down start, the Nifty attempted to recover some losses in the first half**; however, renewed selling pressure in the latter half dragged the index back toward the day's low before it eventually settled at 23,123, down 1.04%.
- ✦ Given the prevailing uncertainty and heightened global volatility, **we continue to maintain a cautious stance and prefer a sell-on-rise approach in the index.**
- ✦ At the same time, **traders should focus on stock-specific opportunities** while maintaining strict risk and position management.

### BANKNIFTY

54063.75 ↘ 432.50 (0.79%)

S1

53500

S2

53000

R1

54500

R2

54800

Technical Chart : Daily



- ✦ **The Banking Index breached its 20-DEMA once again**, witnessing profit booking after a strong four-session rally earlier.
- ✦ The index opened with a significant downside gap and attempted an intraday recovery; however, **buying momentum remained weak, leading to a negative close.**
- ✦ **Broad-based profit taking was observed across constituents**, with only SBI and Federal Bank exhibiting relative strength.
- ✦ Immediate **resistance is placed at 54,800**, while key **support is positioned near 53,000.**

**Technical**

Stock of the day	Recom.	CMP (₹)	Range*	SL	Target
<b>FORTIS</b>	<b>BUY</b>	989.10	986-990	950	1060

Technical Chart : Daily



- ✦ **FORTIS has registered a decisive breakout above its previous swing high**, supported by a notable expansion in trading volumes, signaling strengthening bullish momentum and trend continuation.
- ✦ **The stock remains comfortably positioned above its key moving averages**, reaffirming a well-established uptrend across multiple timeframes.
- ✦ **Momentum indicators continue to exhibit positive traction**, reinforcing the constructive outlook.
- ✦ **Investors may consider initiating fresh long positions** within the recommended accumulation range.

Momentum Stocks Midcap	Name	Price	Price %
	CCL	1182.00	9.54↗
	CAPLIPOINT	2096.50	3.12↗
	MAXHEALTH	1006.05	2.95↗
	DEVYANI	109.15	3.52↘
	GSPL	268.35	7.13↘

Name	Price	Price %	Range Breakout / Breakdown
WIPRO	181.70	8.40↘	
POWERINDIA	34705.00	5.87↘	
FORCEMOT	17193.00	5.76↘	
NATIONALUM	377.00	4.73↘	
MOTILALOFS	816.90	4.50↘	

Top 5 F&O Gainers ↗	Name	Price	Price %
	MAXHEALTH	1006.05	2.95↗
	ALKEM	5370.50	2.27↗
	FORTIS	985.50	1.74↗
	POWERGRID	290.00	1.52↗
	BHARTIARTL	1820.00	1.21↗

Name	Price	Price %	Top 5 F&O Losers ↘
WIPRO	181.70	8.40↘	
MUTHOOTFIN	2954.00	6.31↘	
POWERINDIA	34705.00	5.87↘	
FORCEMOT	17193.00	5.76↘	
NAM-INDIA	1050.00	5.67↘	

Bullish Charts	Name	Price	Price %
	APOLLOHOSP	8345.00	0.49↗
	BEL	412.00	0.93↗
	GAIL	168.00	0.36↗
	PREMIERENE	1083.90	0.35↗
	TECHM	1498.00	0.98↗

Name	Price	Price %	Bearish Charts
ABCAPITAL	342.55	4.18↘	
CROMPTON	256.00	3.98↘	
KALYANKJIL	353.15	5.03↘	
NATIONALUM	377.00	4.73↘	
PRESTIGE	1325.00	4.06↘	

## Research Team

Name	Email ID
<i>Ajit Mishra</i>	<a href="mailto:ajit.mishra@religare.com">ajit.mishra@religare.com</a>
<i>Abhijeet Banerjee</i>	<a href="mailto:abhijeet.banerjee@religare.com">abhijeet.banerjee@religare.com</a>
<i>Gaurav Sharma</i>	<a href="mailto:gauravsharma2@religare.com">gauravsharma2@religare.com</a>
<i>Ashwani Harit</i>	<a href="mailto:ashwani.harit@religare.com">ashwani.harit@religare.com</a>
<i>Divya Parmar</i>	<a href="mailto:divya.parmar@religare.com">divya.parmar@religare.com</a>
<i>Rajan Gupta</i>	<a href="mailto:rajan.gupta1@religare.com">rajan.gupta1@religare.com</a>
<i>Vivek Chandra</i>	<a href="mailto:vivek.chandra@religare.com">vivek.chandra@religare.com</a>
<i>Himanshu Gupta</i>	<a href="mailto:himanshu.gupta1@religare.com">himanshu.gupta1@religare.com</a>

## Disclaimer

Before you use this research report, please ensure to go through the disclosure inter-alia as required under Securities and Exchange Board of India (Research Analysts) Regulations, 2014 and Research Disclaimer at the following link: <https://www.religareonline.com/disclaimer>

**Specific analyst(s) specific disclosure(s) inter-alia as required under Securities and Exchange Board of India (Research Analysts) Regulations, 2014 is/ are as under:**

Statements on ownership and material conflicts of interest, compensation- Research Analyst (RA) [Please note that only in case of multiple RAs, if in the event answers differ inter-se between the RAs, then RA specific answer with respect to questions under F(a) to F(j) below, are given separately]:

S. No.	Statement	Answer	
		Yes	No
	I/we or any of my/our relative has any financial interest in the subject company? <b>[If answer is yes, nature of interest is given below this table]</b>		No
	I/we or any of my/our relatives, have actual/beneficial ownership of one percent. or more securities of the subject company, at the end of the month immediately preceding the date of publication of the research report or date of the public appearance?		No
	I/we or any of my/our relative, has any other material conflict of interest at the time of publication of the research report or at the time of public appearance?		No
	I/we have received any compensation from the subject company in the past twelve months?		No
	I/we have managed or co-managed public offering of securities for the subject company in the past twelve months?		No
	I/we have received any compensation for brokerage services from the subject company in the past twelve months?		No
	I/we have received any compensation for products or services other than brokerage services from the subject company in the past twelve months?		No
	I/we have received any compensation or other benefits from the subject company or third party in connection with the research report?		No
	I/we have served as an officer, director or employee of the subject company?		No
	I/we have been engaged in market making activity for the subject company?		No

Nature of Interest if answer to F(a) above is Yes: ..... Name(s) with Signature(s) of RA(s).

[Please note that only in case of multiple RAs and if the answers differ inter-se between the RAs, then RA specific answer with respect to questions under F(a) to F(j) above, are given below]

SS. No.	Name(s) of RA.	Signatures of RA	Serial Question of question which the signing RA needs to make a separate declaration / answer	Yes	No

Copyright in this document vests exclusively with RBL. This information should not be reproduced or redistributed or passed on directly or indirectly in any form to any other person or published, copied, in whole or in part, for any purpose, without prior written permission from RBL. We do not guarantee the integrity of any emails or attached files and are not responsible for any changes made to them by any other person.

*No representations are being made about the performance or activities unless accompanied by data regarding performance, disclosures of all the risk factors, etc. and disclaimer that "Such representations are not indicative of future results*

