

### Key Indices Update

Indices	Close	Change (%)
Nifty	24,168.00	0.34↑
Sensex	77,409.98	0.33↑
Midcap	62,379.25	0.41↑
Smallcap	18,705.60	0.44↑

### Trend Strength Indicator

Nifty 50 Stocks above 200 EMA	NSE Advance / Decline
28	1897/1382

### Key Data

Data	Current	Previous
Dow Jones	51533.0	51492.5
U.S. Dollar Index	100.79	100.24
Brent Crude (USD/BBL)	79.23	78.36
US 10Y Bond Yield (%)	4.46	4.47
India 10Y Bond Yield (%)	6.84	6.86

### Sectoral Data

Sector	Close	Change (%)
BANKNIFTY	57984.30	0.69↑
NIFTYAUTO	26710.10	0.05↓
NIFTYENERG	40489.80	0.62↑
NIFTYFINSR	28890.45	0.76↑
NIFTYFMCG	49600.85	0.09↑
NIFTYIT	28453.60	1.24↓
NIFTYMEDIA	1514.60	0.59↑
NIFTYMETAL	13046.65	0.27↑
NIFTYPHARM	24316.90	0.71↑
NIFTYREALT	821.35	0.83↑

## Fundamental

Refer Page 02

### Stock for Investment

Stock Name	Sector	*CMP (₹)	^TP (₹)	Upside
KOTAKBANK	Banks	403	497	23.3%

\*CMP as on June 18 2026

### Top News

- ✦ **RateGain Travel Technologies has added Cinko as a new demand partner through its Enterprise Connectivity platform, enabling access to global hotel inventory.** The partnership strengthens distribution, supports same-day hotel bookings, and helps hotels monetize last-minute inventory through high-intent travellers.
- ✦ **Tata Motors will increase prices of its commercial vehicles by up to 2.5% from July 1, 2026.** The price hike, varying by model and variant, is aimed at partially offsetting the impact of rising commodity prices and higher input costs.

## Technical

Refer Page 03-04

- ✦ **Nifty traded with a positive bias on Thursday**, extending their winning streak for the fifth consecutive session amid supportive global cues.
- ✦ Consequently, the Nifty settled at 24,168.00, up 0.34%, while **comfortably sustaining above the psychological 24,000 mark.**
- ✦ **Technically, the Nifty has surpassed another important hurdle in the form of its medium-term moving average, the 100-day EMA, near the 24,150 mark**, and now appears poised to inch towards the 24,500–24,600 zone.
- ✦ The ongoing buoyancy in banking majors, **coupled with rotational buying across heavyweight stocks, continues to support the prevailing uptrend.**
- ✦ **We therefore continue to advocate a stock-specific approach**, favouring relative outperformers while maintaining disciplined risk management and selectively booking profits on rallies.
- ✦ **Stock of the day - ABCAPITAL**

# Fundamental

## Top News

- 01** **RateGain Travel Technologies has added Cinko as a new demand partner through its Enterprise Connectivity platform, enabling access to global hotel inventory.** The partnership strengthens distribution, supports same-day hotel bookings, and helps hotels monetize last-minute inventory through high-intent travellers.
- 02** **Tata Motors will increase prices of its commercial vehicles by up to 2.5% from July 1, 2026.** The price hike, varying by model and variant, is aimed at partially offsetting the impact of rising commodity prices and higher input costs.
- 03** **E2E Networks has incorporated a wholly owned subsidiary, Sovcloud Technologies, to provide datacentre services, hosted solutions, infrastructure tools, and managed services.** The subsidiary will focus on datacentre operations, provisioning, monitoring, billing solutions, and related technology intellectual property development.
- 04** **Bajaj Finance has raised ₹1,455.40 crore through the allotment of 1,39,000 secured redeemable NCDs via private placement.** The debentures, issued at ₹1,04,705.27 each, will be listed on the BSE Wholesale Debt Market Segment.
- 05** **JBM Auto's EV arm, JBM Ecolife Mobility, secured ₹750 crore strategic investment from Motilal Oswal Alternates to expand electric bus deployment across India.** The funding will support zero-emission public transport, with the company's e-bus orderbook exceeding 10,000 units.

### Stock for Investment

### Kotak Mahindra Bank Ltd

<b>Stock Symbol</b>	<b>KOTAKBANK</b>
<b>Sector</b>	<b>Banks</b>
<b>*CMP (₹)</b>	<b>403</b>
<b>^Target Price (₹)</b>	<b>497</b>
<b>Upside</b>	<b>23.3%</b>

- ✦ **Earnings beat with improved asset quality:** Kotak Mahindra Bank reported 13% YoY PAT growth, driven by lower credit costs, reduced slippages, and better GNPA/NNPA.
- ✦ **Loan growth led by secured segments:** Advances rose ~16% YoY, supported by mortgages and SME, with gradual recovery in unsecured lending.
- ✦ **Stable margins and better efficiency:** NIM held near ~4.6%, while cost control improved operating efficiency and profitability.
- ✦ **Positive outlook; BUY maintained:** Strong deposits, improving asset quality, and growth visibility support BUY with target price of ₹497.

\*CMP as on June 18, 2026

^Time horizon - upto 11 Months

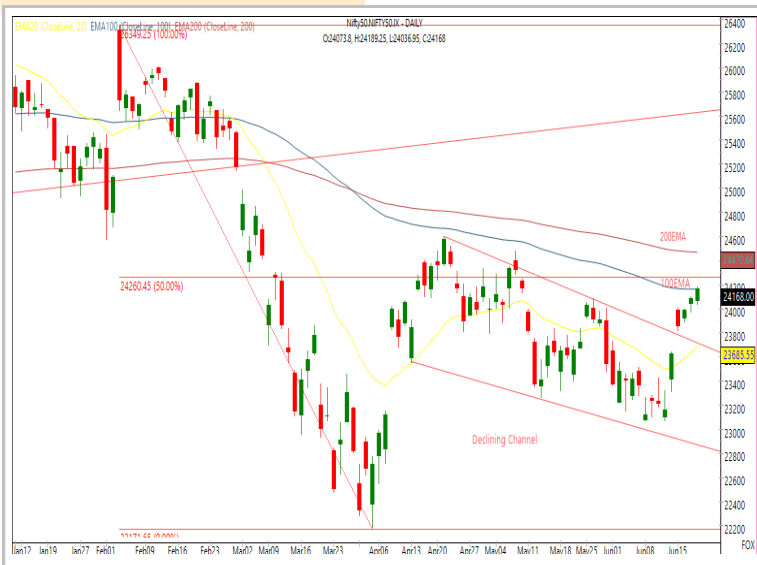
# Technical

Expect positive tone to continue. Maintain focus on stock selection.

NIFTY
24168.00 <span style="color: green;">↑</span> 82.30 (0.34%)

S1	S2	R1	R2
24050	23900	24300	24450

Technical Chart : Daily

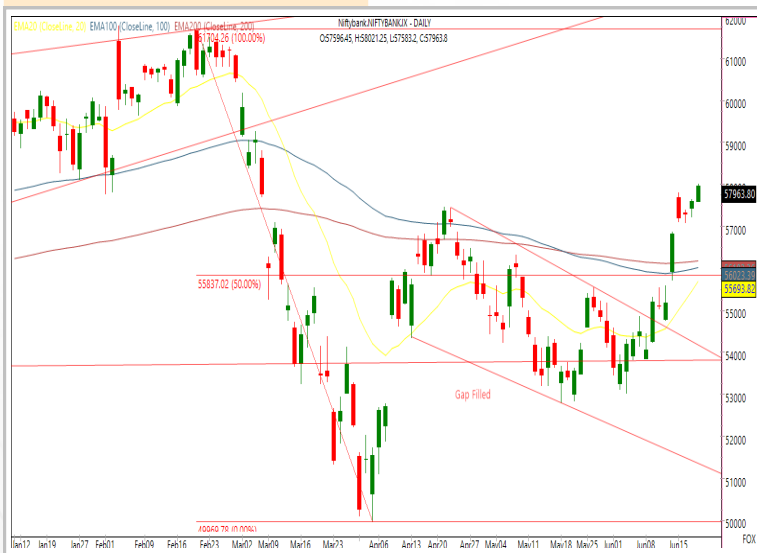


- ✦ **Nifty traded with a positive bias on Thursday**, extending their winning streak for the fifth consecutive session amid supportive global cues.
- ✦ Consequently, the Nifty settled at 24,168.00, up 0.34%, while **comfortably sustaining above the psychological 24,000 mark**.
- ✦ **Technically, the Nifty has surpassed another important hurdle in the form of its medium-term moving average, the 100-day EMA, near the 24,150 mark**, and now appears poised to inch towards the 24,500–24,600 zone.
- ✦ **We therefore continue to advocate a stock-specific approach**, favouring relative outperformers while maintaining disciplined risk management and selectively booking profits on rallies.

BANKNIFTY
57963.80 <span style="color: green;">↑</span> 378.75 (0.66%)

S1	S2	R1	R2
57400	56900	58500	59000

Technical Chart : Daily

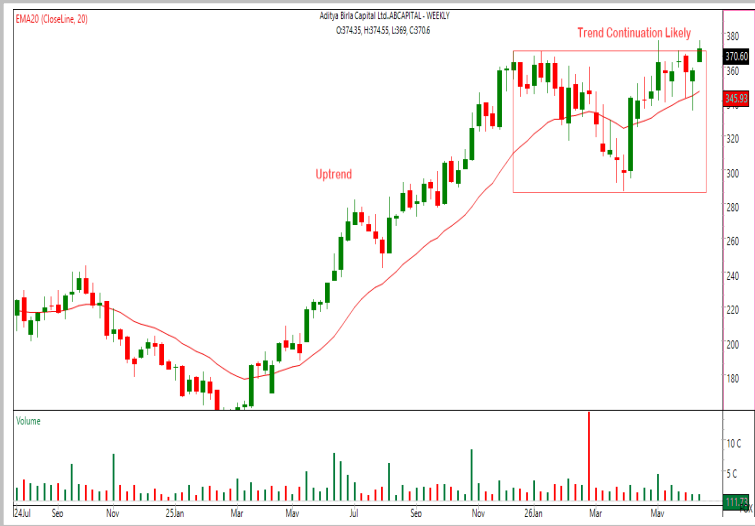


- ✦ **The banking index extended its upward trajectory, confirming a fresh breakout** and registering its sixth consecutive positive close.
- ✦ **Opening with a bullish gap**, the index sustained buying interest throughout the session.
- ✦ **Market breadth remained mixed**, with HDFCBank and SBIN outperforming, while Federal Bank and Kotak Bank underperformed.
- ✦ Immediate **resistance is positioned near 59,000**, whereas crucial **support is around 56,900**.

**Technical**

Stock of the day	Recom.	CMP (₹)	Range*	SL	Target
<b>ABCAPITAL</b>	<b>BUY</b>	370.60	368-371	356	396

Technical Chart : **Weekly**



- ✦ **ABCAPITAL recently confirmed a bullish breakout accompanied by expanding volumes**, reinforced by rising short-to-medium-term moving averages providing dynamic support.
- ✦ **The prevailing sequence of higher highs and higher lows confirms sustained buying interest and trend strength.**
- ✦ **The breakout zone remains intact**, reflecting resilient demand with declines consistently absorbed.
- ✦ **Investors may consider accumulating within the highlighted accumulation zone** on corrective pullbacks.

Momentum Stocks Midcap	Name	Price	Price %
	KPRMILL	1188.90	13.96↗
	WELSPUNLIV	161.65	10.23↗
	REDINGTON	271.55	9.09↗
	COHANCE	414.80	2.43↘
	GSPL	268.35	7.13↘

Name	Price	Price %	Range Breakout/ Breakdown
NYKAA	298.00	6.07↗	
UNITDSPR	1350.00	3.21↗	
CAMS	832.50	3.13↗	
LICI	430.55	2.97↗	
HDFCBANK	800.80	1.74↗	

Top 5 F&O Gainers ↗	Name	Price	Price %
	MAXHEALTH	1094.45	6.66↗
	NYKAA	298.00	6.07↗
	ADANIPOWER	231.78	5.16↗
	CDSL	1351.90	4.73↗
	KAYNES	3382.00	4.12↗

Name	Price	Price %	Top 5 F&O Losers ↘
INFY	1128.00	2.57↘	
NBCC	109.94	2.56↘	
LTF	287.00	2.43↘	
PAYTM	1093.80	2.35↘	
VBL	532.10	2.20↘	

Bullish Charts	Name	Price	Price %
	ADANIENSOL	1539.00	3.22↗
	ADANIGREEN	1517.00	3.49↗
	BHEL	405.50	3.38↗
	ICICIPRULI	523.10	3.86↗
	MFSL	1686.90	3.38↗

Name	Price	Price %	Bearish Charts
COCHINSHIP	1469.90	2.02↘	
INOXWIND	89.33	1.84↘	
PERSISTENT	4940.00	2.08↘	
PETRONET	287.65	1.49↘	
SUZLON	58.37	1.52↘	

## Research Team

Name	Email ID
<i>Ajit Mishra</i>	<a href="mailto:ajit.mishra@religare.com">ajit.mishra@religare.com</a>
<i>Abhijeet Banerjee</i>	<a href="mailto:abhijeet.banerjee@religare.com">abhijeet.banerjee@religare.com</a>
<i>Gaurav Sharma</i>	<a href="mailto:gauravsharma2@religare.com">gauravsharma2@religare.com</a>
<i>Ashwani Harit</i>	<a href="mailto:ashwani.harit@religare.com">ashwani.harit@religare.com</a>
<i>Divya Parmar</i>	<a href="mailto:divya.parmar@religare.com">divya.parmar@religare.com</a>
<i>Rajan Gupta</i>	<a href="mailto:rajan.gupta1@religare.com">rajan.gupta1@religare.com</a>
<i>Vivek Chandra</i>	<a href="mailto:vivek.chandra@religare.com">vivek.chandra@religare.com</a>
<i>Himanshu Gupta</i>	<a href="mailto:himanshu.gupta1@religare.com">himanshu.gupta1@religare.com</a>

## Disclaimer

Before you use this research report, please ensure to go through the disclosure inter-alia as required under Securities and Exchange Board of India (Research Analysts) Regulations, 2014 and Research Disclaimer at the following link: <https://www.religareonline.com/disclaimer>

**Specific analyst(s) specific disclosure(s) inter-alia as required under Securities and Exchange Board of India (Research Analysts) Regulations, 2014 is/ are as under:**

Statements on ownership and material conflicts of interest, compensation- Research Analyst (RA) [Please note that only in case of multiple RAs, if in the event answers differ inter-se between the RAs, then RA specific answer with respect to questions under F(a) to F(j) below, are given separately]:

S. No.	Statement	Answer	
		Yes	No
	I/we or any of my/our relative has any financial interest in the subject company? <b>[If answer is yes, nature of interest is given below this table]</b>		No
	I/we or any of my/our relatives, have actual/beneficial ownership of one percent. or more securities of the subject company, at the end of the month immediately preceding the date of publication of the research report or date of the public appearance?		No
	I/we or any of my/our relative, has any other material conflict of interest at the time of publication of the research report or at the time of public appearance?		No
	I/we have received any compensation from the subject company in the past twelve months?		No
	I/we have managed or co-managed public offering of securities for the subject company in the past twelve months?		No
	I/we have received any compensation for brokerage services from the subject company in the past twelve months?		No
	I/we have received any compensation for products or services other than brokerage services from the subject company in the past twelve months?		No
	I/we have received any compensation or other benefits from the subject company or third party in connection with the research report?		No
	I/we have served as an officer, director or employee of the subject company?		No
	I/we have been engaged in market making activity for the subject company?		No

Nature of Interest if answer to F(a) above is Yes: ..... Name(s) with Signature(s) of RA(s).

[Please note that only in case of multiple RAs and if the answers differ inter-se between the RAs, then RA specific answer with respect to questions under F(a) to F(j) above, are given below]

SS. No.	Name(s) of RA.	Signatures of RA	Serial Question of question which the signing RA needs to make a separate declaration / answer	Yes	No

Copyright in this document vests exclusively with RBL. This information should not be reproduced or redistributed or passed on directly or indirectly in any form to any other person or published, copied, in whole or in part, for any purpose, without prior written permission from RBL. We do not guarantee the integrity of any emails or attached files and are not responsible for any changes made to them by any other person.

*No representations are being made about the performance or activities unless accompanied by data regarding performance, disclosures of all the risk factors, etc. and disclaimer that "Such representations are not indicative of future results*

