

Market Outlook

The Nifty 50 ended the week at 24,894, extending its rebound with weekly gains of nearly 1%. The India VIX has weekly decline of nearly 12%, reflecting easing volatility and signalling expectations of near-term market stability. On the derivatives front, fresh Put OI buildup at 24,800 and 24,700 indicates immediate support zones in the event of a corrective move. On the upside, significant Call OI concentration at the 25,000 strike suggests a key resistance level. From a technical standpoint, the index has reclaimed its 50-day EMA at 24,900, and is expected to inches towards the 25,000 mark.

Key Indices Update

INDEX	CLOSE	CHANGE (%)
NIFTY	24894.25	0.23
SENSEX	81207.17	0.28
BANKNIFTY	55589.25	0.44
INDIA VIX	10.06	-2.21

Fills STATISTICS

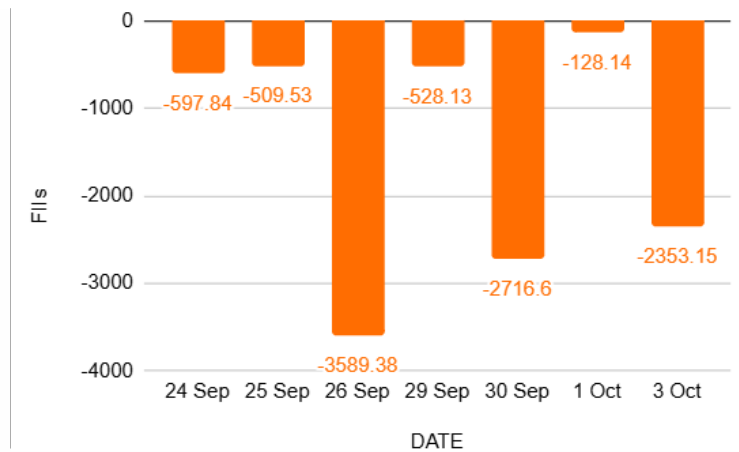
Fills F&O Data

Sector	Buy/Sell	Change in OI
Index Futures	-2353.15	6.96%
Index Options	3664.05	25.95%
Stock Futures	-2314.80	-0.27%
Stock Options	-215.26	28.79%

Fills & DII's Cash Segment (Rs. In Crore)

Category	Amount	MTD	YTD
FII	-1583.37	-3188	-111061
DII	489.76	3406	393063

Fills Activity in Index Future



Amt in Crores

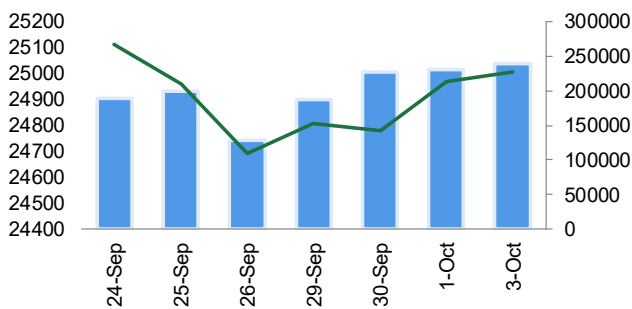
NIFTY 50 HIGH DELIVERY STOCKS

SYMBOL	DELIVERABLE QTY	CHG IN DLY RATIO VS PREV DAY	% CHG IN TRD QTY OVER PREV DAY
HDFCBANK	18018739	1.55	5.16
ETERNAL	15568596	11.33	39.65
POWERGRID	15553810	8.54	65.91
ITC	13399155	8.52	-3.72
BEL	8766541	10.02	21.63
RELIANCE	8125598	8.26	6.61
ICICIBANK	7843803	-4.4	-41.95
AXISBANK	7615776	1.17	14.91
ONGC	6987807	20.29	3.15
WIPRO	6419185	3.49	15.71

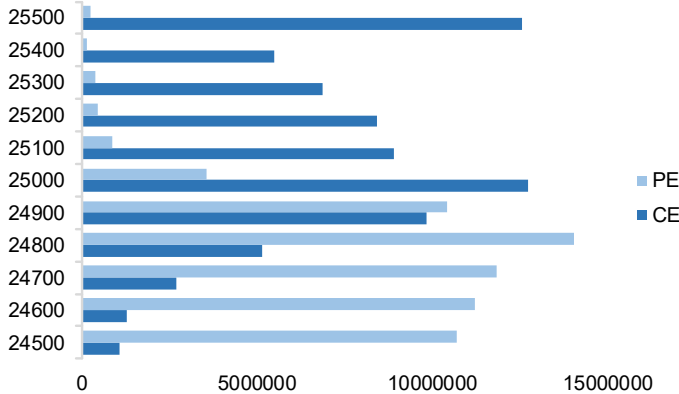
NIFTY

Nifty	25006.60
OI (In contracts)	240206
CHANGE IN OI (%)	4.38
PRICE CHANGE (%)	0.16
IMPLICATION	LONG BUILDUP

NIFTY (CLOSE VS OI)



NIFTY OPTION CHAIN



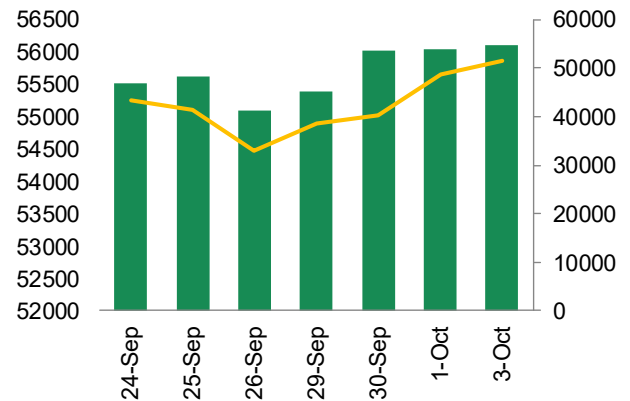
Long Buildup

Symbol	Price	Price %	OI	OI %
LTF	260.08	3.60	44495064	11.52
IREDA	153.02	2.42	35369400	10.84
IEX	142.2	1.45	48900000	9.19
LICI	911.7	0.49	6640200	8.88
PFC	414	0.42	46995000	7.12

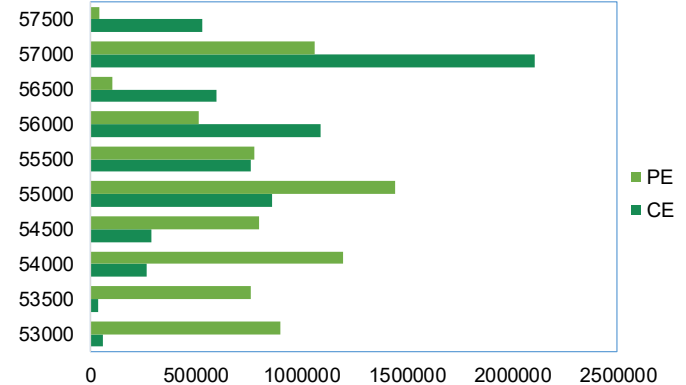
BANKNIFTY

Banknifty	55854.20
OI (In contracts)	54775
CHANGE IN OI (%)	1.79
PRICE CHANGE (%)	0.34
IMPLICATION	LONG BUILDUP

BANKNIFTY (CLOSE VS OI)



BANKNIFTY OPTION CHAIN



Short Buildup

Symbol	Price	Price %	OI	OI %
SBICARD	866.3	-0.34	16642400	9.57
TECHM	1399.7	-0.98	14463600	6.21
LODHA	1120.4	-2.37	10159200	5.75
IGL	210.45	-0.03	13527250	4.88
LAURUSLABS	872.75	-0.64	17962200	4.77

Top 10 High PCR Ratio Stocks

SCRIP	PUT	CALL	P/C RATIO
SRF	670400	569600	1.18
KOTAKBANK	7182000	6129200	1.17
PETRONET	13487400	11575800	1.17
POLICYBZR	877800	790650	1.11
SUNPHARMA	3534300	3193750	1.11
INDUSINDBK	10282300	9388400	1.1
LTF	22350158	20792920	1.07
BANKBARODA	28600650	28904850	0.99
RECLTD	20079975	20577225	0.98
TECHM	3911400	4006800	0.98

Top 10 Low PCR Ratio Stocks

SCRIP	PUT	CALL	P/C RATIO
POWERINDIA	1500	12900	0.12
SBILIFE	651750	1580625	0.41
IREDA	9853200	23235750	0.42
PPLPHARMA	3570000	8440000	0.42
RBLBANK	11033125	26244550	0.42
AXISBANK	9668750	22430000	0.43
LICI	1416800	3201800	0.44
RVNL	5538500	12358500	0.45
SIEMENS	278125	619875	0.45
IIFL	1707750	3740550	0.46

NIFTY 50 SUPPORT-RESISTANCE LEVELS

SYMBOL	R1	R2	PP	S1	S2
ADANIENT	241	242	238	237	235
ADANIPTS	12168	12240	12112	12040	11984
APOLLOHOSP	4878	4910	4823	4791	4736
ASIANPAINT	3490	3513	3448	3425	3383
AXISBANK	1420	1441	1409	1388	1376
BAJAJ-AUTO	2925	2939	2912	2897	2884
BAJAJFINSV	177	180	173	171	167
BAJFINANCE	735	751	726	710	701
BEL	1155	1165	1146	1136	1127
BHARTIARTL	1659	1677	1638	1620	1599
CIPLA	656	662	648	642	634
COALINDIA	877	882	873	869	864
DRREDDY	1812	1832	1793	1773	1755
EICHERMOT	1379	1387	1372	1365	1358
ETERNAL	293	296	288	285	279
GRASIM	247	249	244	242	239
HCLTECH	346	348	344	341	339
HDFCBANK	1181	1187	1169	1162	1150
HDFCLIFE	1102	1131	1084	1055	1037
HEROMO-TOCO	16035	16167	15936	15804	15705
HINDALCO	3516	3558	3467	3425	3376
HINDUNILVR	3778	3805	3731	3704	3656
ICICIBANK	2124	2138	2100	2085	2061
INDUSINDBK	1182	1194	1169	1157	1144
INFY	305	306	302	301	299

SYMBOL	R1	R2	PP	S1	S2
ITC	407	409	406	405	403
JIOFIN	1448	1453	1439	1433	1424
JSWSTEEL	5731	5777	5671	5625	5566
KOTAKBANK	1376	1382	1373	1367	1364
LT	2565	2577	2543	2531	2510
M&M	797	808	783	771	757
MARUTI	770	777	764	757	751
NESTLEIND	973	977	966	962	954
NTPC	1397	1406	1387	1377	1367
ONGC	2829	2847	2805	2787	2764
POWERGRID	336	342	331	326	321
RELIANCE	7033	7100	6960	6892	6819
SBILIFE	1266	1278	1257	1245	1235
SBIN	390	394	386	381	378
SHRIRAMFIN	1538	1553	1527	1513	1502
SUNPHARMA	1921	1938	1891	1874	1843
TATACONSUM	419	422	413	410	404
TATAMOTORS	1000	1007	989	982	971
TATASTEEL	2032	2055	2006	1983	1956
TCS	8817	8900	8672	8589	8444
TECHM	1195	1204	1186	1177	1167
TITAN	2373	2383	2358	2347	2333
TRENT	7556	7629	7446	7373	7263
ULTRACEMCO	1438	1449	1429	1419	1410
WIPRO	2627	2647	2604	2584	2560

Disclaimer

Before you use this research report, please ensure to go through the disclosure inter-alia as required under Securities and Exchange Board of India (Research Analysts) Regulations, 2014 and Research Disclaimer at the following link: <https://www.religareonline.com/disclaimer>

Specific analyst(s) specific disclosure(s) inter-alia as required under Securities and Exchange Board of India (Research Analysts) Regulations, 2014 is/are as under:

Statements on ownership and material conflicts of interest, compensation– Research Analyst (RA) [Please note that only in case of multiple RAs, if in the event answers differ inter-se between the RAs, then RA specific answer with respect to questions under F(a) to F(j) below, are given separately]:

S. No.	Statement	Answer	
		Yes	No
	I/we or any of my/our relative has any financial interest in the subject company? [If answer is yes, nature of Interest is given below this table]		No
	I/we or any of my/our relatives, have actual/beneficial ownership of one percent. or more securities of the subject company, at the end of the month immediately preceding the date of publication of the research report or date of the public appearance?		No
	I/we or any of my/our relative, has any other material conflict of interest at the time of publication of the research report or at the time of public appearance?		No
	I/we have received any compensation from the subject company in the past twelve months?		No
	I/we have managed or co-managed public offering of securities for the subject company in the past twelve months?		No
	I/we have received any compensation for brokerage services from the subject company in the past twelve months?		No
	I/we have received any compensation for products or services other than brokerage services from the subject company in the past twelve months?		No
	I/we have received any compensation or other benefits from the subject company or third party in connection with the research report?		No
	I/we have served as an officer, director or employee of the subject company?		No
	I/we have been engaged in market making activity for the subject company?		No

Nature of Interest if answer to F(a) above is Yes:

..... Name(s) with Signature(s) of RA(s).

[Please note that only in case of multiple RAs and if the answers differ inter-se between the RAs, then RA specific answer with respect to questions under F(a) to F(j) above, are given below]

SS. No.	Name(s) of RA.	Signatures of RA	Serial Question of question which the signing RA needs to make a separate declaration / answer	Yes	No

Copyright in this document vests exclusively with RBL. This information should not be reproduced or redistributed or passed on directly or indirectly in any form to any other person or published, copied, in whole or in part, for any purpose, without prior written permission from RBL. We do not guarantee the integrity of any emails or attached files and are not responsible for any changes made to them by any other person.

No representations are being made about the performance or activities unless accompanied by data regarding performance, disclosures of all the risk factors, etc. and disclaimer that "Such representations are not indicative of future results

Name	Email ID	Designation
Vishvajeet Singh	vishvajeet.singh1@religare.com	Research Analyst