

Key Indices Update

Indices	Close	Change (%)
Nifty	22,679.40	1.56↑
Sensex	73,134.32	1.65↑
Midcap	53,819.15	2.22↑
Smallcap	15,709.80	3.33↑

Trend Strength Indicator

Nifty 50 Stocks above 200 EMA	NSE Advance / Decline
13	2936/282

Key Data

Data	Current	Previous
Dow Jones	46,698.5	46,435.9
U.S. Dollar Index	94.77	99.86
Brent Crude (USD/BBL)	99.74	104.85
US 10Y Bond Yield (%)	4.32	4.30
India 10Y Bond Yield (%)	7.00	7.00

Sectoral Data

Sector	Close	Change (%)
BANKNIFTY	51523.60	2.48↑
NIFTYAUTO	24220.50	1.90↑
NIFTYENERG	35417.75	1.63↑
NIFTYFINSR	26209.45	1.96↑
NIFTYFMCG	46144.10	1.33↑
NIFTYIT	29703.80	2.21↑
NIFTYMEDIA	1303.05	3.27↑
NIFTYMETAL	11415.80	2.49↑
NIFTYPHARM	22019.90	0.96↓
NIFTYREALT	664.25	2.01↑

Fundamental

Refer Page 02

Stock for Investment

Stock Name	Sector	*CMP (₹)	^TP (₹)	Upside
TITAN	Consumer Goods	4,058	4,989	22.9%

*CMP as on April 01 2026

Top News

- ✦ **Bharat Electronics secured additional orders worth ₹6,795 crore**, including mountain radars from MoD, avionics for LCA from HAL, export communication equipment, and other systems. Earlier ₹1,660 crore orders strengthen its defence order book and revenue visibility.
- ✦ **Granules India's subsidiary Granules Life Sciences received USFDA VAI status for its Shamirpet facility after cGMP and pre-approval inspection.** No action required, enabling multi-site manufacturing and strengthening finished dosage capabilities and regulatory compliance.

Technical

Refer Page 03-04

- ✦ **Nifty staged a rebound on Wednesday**, marking a strong start to the new financial year.
- ✦ **The Nifty 50 opened gap-up above the 22,600 mark**, tracking positive global cues; however, selling pressure in the latter half of the session trimmed gains, with the index eventually settling at 22,679.40, up 1.56%.
- ✦ From a technical perspective, **the Nifty witnessed a relief rally after a steep ~11% decline in March**; however, sustainability remains critical.
- ✦ **Immediate resistance is placed in the 23,000–23,200 zone**, with a key hurdle at 23,500, while support is seen in the **22,300–22,000 range**.
- ✦ From a trading standpoint, **maintaining balanced exposure on both sides and preferring spread strategies** over naked positions is advisable as a prudent risk management approach until the market stabilizes.
- ✦ **Stock of the day - SAIL**

Fundamental

Top News

- 01** **Bharat Electronics secured additional orders worth ₹6,795 crore**, including mountain radars from MoD, avionics for LCA from HAL, export communication equipment, and other systems. Earlier ₹1,660 crore orders strengthen its defence order book and revenue visibility.
- 02** **Granules India's subsidiary Granules Life Sciences received USFDA VAI status for its Shamirpet facility after cGMP and pre-approval inspection.** No action required, enabling multi-site manufacturing and strengthening finished dosage capabilities and regulatory compliance.
- 03** **Tejas Networks signed an MoU with Indian Institute of Technology Gandhinagar to drive telecom research and skill development**, including setting up a Center of Excellence for innovation, training, and deployment in advanced wireline and wireless technologies.
- 04** **Power Mech Projects secured a ₹109.22 crore order from Hindustan Zinc for operation and maintenance of a 91.5 MW captive power plant and transmission line**, to be executed over 48 months, strengthening its O&M business visibility.
- 05** **Marksans Pharma received USFDA approval for Benzonatate Capsules (100 mg & 200 mg), generic of Pfizer's Tessalon.** The drug treats cough by numbing respiratory receptors, strengthening the company's US generics portfolio and revenue visibility.

Stock for Investment

Titan Company Ltd

Stock Symbol	TITAN
Sector	Consumer Goods
*CMP (₹)	4,058
^Target Price (₹)	4,989
Upside	22.9%

- Strong Q3FY26 Execution:** Titan posted solid Q3FY26 results, booking labour code impact upfront; subsidiaries' contribution improved.
- Jewellery Demand Steady:** Buyer growth was flat, new buyers rose, and ticket size hit ₹1.9 lakh on wedding demand and higher gold prices.
- Margins Pressured, Focus Intact:** Higher gold prices hurt margins, but management targets absolute EBIT/PBT growth through scale and mix.
- Expansion Supports Outlook:** Lightweight, lower-karat jewellery boosts affordability; Damas consolidation from Q4 strengthens growth. Buy, target ₹4,989.

*CMP as on April 01, 2026

^Time horizon - upto 11 Months

Technical

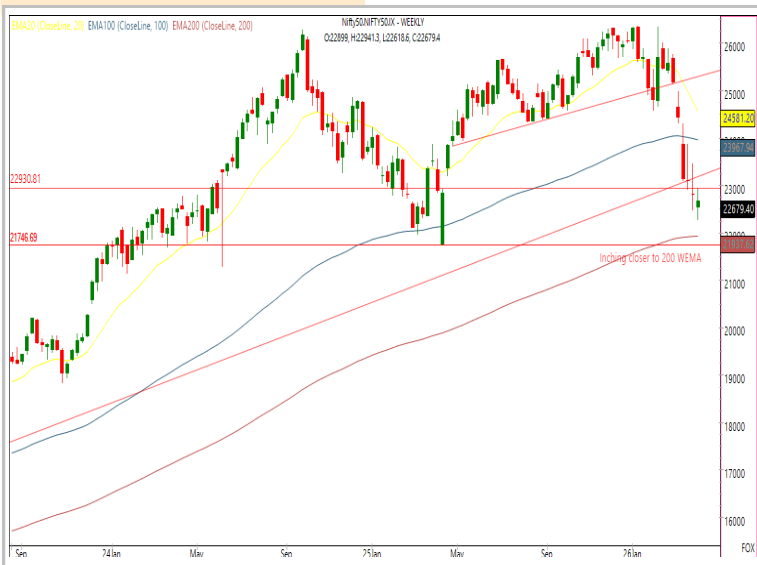
Breather after the sharp fall. Stay selective.

NIFTY

22679.40 ▲ 348.00 (1.56%)

S1	S2	R1	R2
22300	22000	23000	23200

Technical Chart : **Weekly**



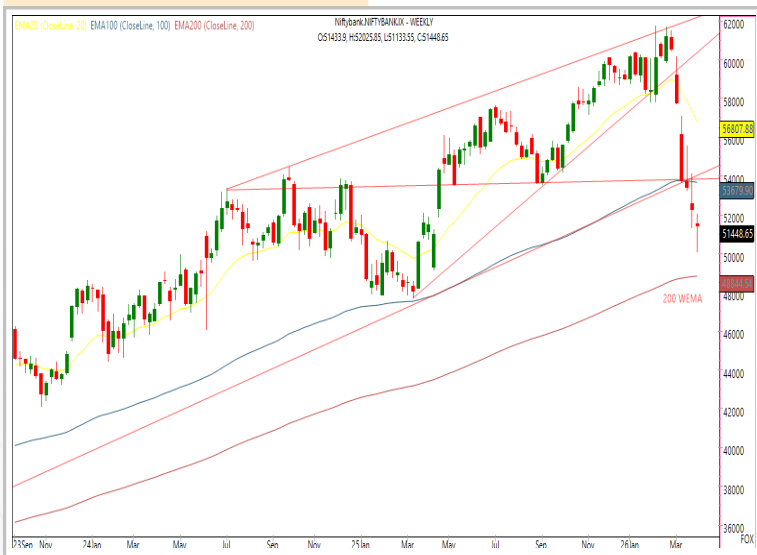
- ✦ **Nifty staged a rebound on Wednesday**, marking a strong start to the new financial year.
- ✦ **The Nifty 50 opened gap-up above the 22,600 mark**, tracking positive global cues; however, selling pressure in the latter half of the session trimmed gains, with the index eventually settling at 22,679.40, up 1.56%.
- ✦ **Immediate resistance is placed in the 23,000–23,200 zone**, with a key hurdle at 23,500, while **support is seen in the 22,300–22,000 range**.
- ✦ From a trading standpoint, **maintaining balanced exposure on both sides and preferring spread strategies** over naked positions is advisable as a prudent risk management approach until the market stabilizes.

BANKNIFTY

51448.65 ▲ 1173.30 (2.33%)

S1	S2	R1	R2
50700	50000	52300	53000

Technical Chart : **Weekly**



- ✦ **The banking index rebounded on Wednesday following two consecutive sessions of decline**, opening with a gap-up and sustaining upward momentum throughout the session.
- ✦ Despite this recovery, **the index continues to trade significantly below its short-term exponential moving averages**, indicating underlying weakness.
- ✦ **Broad-based buying interest was observed across constituents**, with gains primarily driven by Union Bank and IndusInd Bank.
- ✦ **Key resistance is placed near 53,000**, while **strong support is identified around 50,000**.

Technical

Stock of the day	Recom.	CMP (₹)	Range*	SL	Target
SAIL	BUY	155.82	155-156	151	165

Technical Chart : **Weekly**



- ✦ **SAIL exhibits a constructive bullish technical setup**, with price action stabilizing post-correction and showing early signs of upward momentum resumption.
- ✦ **Current formation indicates strengthening demand at lower levels**, suggesting accumulation, while rising volumes on advances reflect renewed buying interest.
- ✦ The formation of **higher lows reinforces the positive bias**, and a decisive breakout above recent swing highs may confirm trend continuation.
- ✦ **Investors may consider initiating long positions** within the specified range.

Momentum Stocks Midcap	Name	Price	Price %
	BALAJITELE	79.99	12.49↗
	SUVEN	147.70	12.15↗
	KNRCON	126.00	11.46↗
	TANLA	419.00	11.01↗
	BLUESTARCO	1554.50	3.49↘

Name	Price	Price %	Range Breakout/ Breakdown
DMART	4275.00	8.04↗	
BOSCHLTD	30775.00	7.06↗	
NATIONALUM	401.00	3.86↗	
PERSISTENT	5055.00	3.65↗	
AUROPHARMA	1341.00	2.81↗	

Top 5 F&O Gainers ↗	Name	Price	Price %
	MAZDOCK	2320.30	12.35↗
	BDL	1212.00	10.52↗
	DMART	4275.00	8.04↗
	BOSCHLTD	30775.00	7.06↗
	NBCC	82.91	6.95↗

Name	Price	Price %	Top 5 F&O Losers ↘
DRREDDY	1207.50	3.78↘	
ASHOKLEY	148.60	3.59↘	
BLUESTARCO	1554.50	3.49↘	
HDFCLIFE	572.15	3.12↘	
SUPREMEIND	3640.00	2.81↘	

Bullish Charts	Name	Price	Price %
	BSE	2865.90	6.80↗
	HDFCAMC	2356.90	6.34↗
	INOXWIND	80.56	6.72↗
	SOLARINDS	12849.00	6.40↗
	TRENT	3521.90	6.86↗

Name	Price	Price %	Bearish Charts
CIPLA	1199.70	2.00↘	
LUPIN	2274.50	1.70↘	
SAMMAANCAP	146.51	2.01↘	
TORNTPHARM	4101.60	2.81↘	
VOLTAS	1241.00	2.50↘	

Research Team

Name	Email ID
<i>Ajit Mishra</i>	ajit.mishra@religare.com
<i>Abhijeet Banerjee</i>	abhijeet.banerjee@religare.com
<i>Gaurav Sharma</i>	gauravsharma2@religare.com
<i>Ashwani Harit</i>	ashwani.harit@religare.com
<i>Divya Parmar</i>	divya.parmar@religare.com
<i>Rajan Gupta</i>	rajan.gupta1@religare.com
<i>Vivek Chandra</i>	vivek.chandra@religare.com
<i>Himanshu Gupta</i>	himanshu.gupta1@religare.com

Disclaimer

Before you use this research report, please ensure to go through the disclosure inter-alia as required under Securities and Exchange Board of India (Research Analysts) Regulations, 2014 and Research Disclaimer at the following link: <https://www.religareonline.com/disclaimer>

Specific analyst(s) specific disclosure(s) inter-alia as required under Securities and Exchange Board of India (Research Analysts) Regulations, 2014 is/ are as under:

Statements on ownership and material conflicts of interest, compensation- Research Analyst (RA) [Please note that only in case of multiple RAs, if in the event answers differ inter-se between the RAs, then RA specific answer with respect to questions under F(a) to F(j) below, are given separately]:

S. No.	Statement	Answer	
		Yes	No
	I/we or any of my/our relative has any financial interest in the subject company? [If answer is yes, nature of interest is given below this table]		No
	I/we or any of my/our relatives, have actual/beneficial ownership of one percent. or more securities of the subject company, at the end of the month immediately preceding the date of publication of the research report or date of the public appearance?		No
	I/we or any of my/our relative, has any other material conflict of interest at the time of publication of the research report or at the time of public appearance?		No
	I/we have received any compensation from the subject company in the past twelve months?		No
	I/we have managed or co-managed public offering of securities for the subject company in the past twelve months?		No
	I/we have received any compensation for brokerage services from the subject company in the past twelve months?		No
	I/we have received any compensation for products or services other than brokerage services from the subject company in the past twelve months?		No
	I/we have received any compensation or other benefits from the subject company or third party in connection with the research report?		No
	I/we have served as an officer, director or employee of the subject company?		No
	I/we have been engaged in market making activity for the subject company?		No

Nature of Interest if answer to F(a) above is Yes: Name(s) with Signature(s) of RA(s).

[Please note that only in case of multiple RAs and if the answers differ inter-se between the RAs, then RA specific answer with respect to questions under F(a) to F(j) above, are given below]

SS. No.	Name(s) of RA.	Signatures of RA	Serial Question of question which the signing RA needs to make a separate declaration / answer	Yes	No

Copyright in this document vests exclusively with RBL. This information should not be reproduced or redistributed or passed on directly or indirectly in any form to any other person or published, copied, in whole or in part, for any purpose, without prior written permission from RBL. We do not guarantee the integrity of any emails or attached files and are not responsible for any changes made to them by any other person.

No representations are being made about the performance or activities unless accompanied by data regarding performance, disclosures of all the risk factors, etc. and disclaimer that "Such representations are not indicative of future results

