



Solid Research
Solid Relationships

Fundamental Outlook

Market Setup

- **The S&P500** and **Dow end red** after U.S. President said an interim deal aimed at ending the war with Iran was over. Where as tech pushes the **NASDAQ** to the modest gains.
- **Dow Futures** is currently **trading Flat**
- **Asian markets** are trading with the **gains of ~1.5 to 2%**
- **Domestic markets** witnessed broad-based selling on Wednesday, with the **Nifty 50 declining 2.1%** to close at 23,882.
- **Gift nifty** is currently trading **with the gains of 0.5% (105 pts up)**
- **FII: +1,963Cr; DII: 790 Cr**

Opening Cues: Flat

Tata Steel: India's crude steel production grew 11.3% YoY to 5.82 million tonnes, while finished steel deliveries increased 8.8% YoY to 5.17 million tonnes, reflecting healthy domestic demand.

View: Positive

JSW Energy: The company announced the commissioning of 1,081 MW of renewable energy capacity since April 2026, taking its total installed capacity to 14,535

View: Positive

NALCO and NLC India have signed a Joint Venture-cum-Shareholders' Agreement (JVA) to form a 50:50 joint venture company for the development of a 4×270 MW (1,080 MW) thermal captive power plant (CPP) at Angul, Odisha.

View: Positive

Government exempts customs duty on key components used in manufacturing lithium-ion batteries, inductor coils, and display assemblies, supporting domestic electronics manufacturing and improving cost competitiveness.

View: Positive for Dixon Tech, Syrma, Amara Raja, Exide industries

Initiating Coverage

Uno Minda

CMP INR 1,132, TP INR 1,406, 24% Upside, Buy, MTF Stock

- Uno Minda (UML) is a leading Tier-1, automotive component supplier with a well-diversified product portfolio spanning all major vehicle segments. Its balanced business mix across switches (25%), lighting(22%), castings(19%), seating(7%), green mobility(7%), and other high-growth products such as ADAS, sensors etc supports resilient long-term growth.
- Structural trends such as vehicle premiumization, EV adoption, and rising content per vehicle (CPV) position UML as a key beneficiary, while seven major project ramp-ups in FY27 are expected to accelerate the next phase of growth.
- We believe UML will fit in as a long-term structural growth story given its well-diversified mix that shields it from the cyclicity of any particular sector and strong presence in different segments with high-growth potential
- We expect UML to deliver a robust 19%/20%/23% Revenue/EBITDA/PAT CAGR over FY26-28E, supported by strong execution, improving returns, healthy free cash flow generation, and a structurally superior long-term growth profile. We initiate a coverage with Buy.

View: BUY

Initiating Coverage

Vedanta Aluminium

CMP INR 451, TP INR 540, 20% Upside, Buy, MTF Stock

- The demerger of Vedanta Ltd, effective 1st May'26, resulted in the creation of Vedanta Aluminum Metal Ltd (VAML) is India's largest pure-play aluminum producer and the third-largest globally (ex-China), with an integrated bauxite-to-aluminum value chain, providing scale advantages, cost leadership, and strong earnings visibility.
- Strategic integration into captive bauxite, coal, alumina, and power is expected to reduce production costs by 9–12%, positioning VAML among the lowest-cost aluminum producers globally while strengthening long-term margins.
- Favorable global aluminum fundamentals including China's production cap, supply disruptions outside China, and India's 8-9% demand CAGR with import substitution opportunities-provide a strong structural tailwind for sustained growth.
- We forecast its consolidated revenue/EBITDA/PAT to grow at ~11%/18%/23% CAGR over FY26-28, aided by volume growth, margin expansion, and increasing downstream contribution.

View: BUY

Velocity Idea

Velocity Idea – FSN E-Commerce Ventures (NYKAA)

RECO: BUY; CMP: ₹317; SL: 290(8.5%); TGT: ₹370(17%)

- Nykaa expects net revenue to grow ~30% YoY in Q1FY27. Both GMV & NSV are projected to expand early-30%, reflecting broad-based growth. Beauty NSV growth is expected in the late-20% range, while Fashion NSV is projected to surge in the mid-50% range, with Fashion revenue expected to nearly double at ~50% YoY growth.
- House of Nykaa portfolio is also expected to perform well during 1QFY27. Mngt has outlined ambitious growth targets: scaling the Beauty business by 2.5–3.0x and Fashion by 3.0–3.5x by FY30. Fashion division is particularly positioned for margin expansion, with management targeting 10%+ EBITDA margins by FY30.
- We continue to view Nykaa as one of the better-positioned consumer internet platforms in India, supported by leadership in premium Beauty, improving Fashion economics, and the growing contribution of owned brands.
- The Stock has broken out from a consolidation zone on the daily scale with high traded volumes.
- It is respecting its 200 DEMA support zones and the RSI momentum indicator is positively placed which has bullish implications.

Defense Opportunities Basket

- With the West Asia conflict moving toward resolution, focus is expected to shift toward replenishment of ammunition, missiles, and critical defense inventories, alongside platform upgrades and modernization programs. This is likely to open up export markets for defense players, apart from the domestic defense ordering, especially across drones, anti-drone systems, electronic warfare, air defense, strategic platforms.
- India's defense ecosystem is witnessing strong momentum, with FY26 defense production reaching a record ₹1.78 lakh crore and defense exports touching an all-time high of ₹384b. Increasing indigenization, technology transfers, and global partnerships are positioning India as a key defense manufacturing hub, supporting the government's target of ₹3t defense production and ₹500b exports by FY30.
- Easing of supply chain issues and the finalization of large orders in FY27 is likely to accelerate growth and improve margins across select players.

Time Frame: 12 months

Review: Monthly

Upside: 15 -20%

Risk: High

Benchmark: Nifty 200

Script	CMP (18 th Jun 2026)	Weightage (%)
Bharat Electronics	429	20%
Bharat Forge	2,020	20%
Data Patterns	4,802	20%
Azad Engineering	2,068	20%
Astra Microwave Products	1,670	20%

Weightage Rationale: We have assigned equal weightage to all the stocks in the basket as we expect equal growth opportunity in each of them.

*Investment in securities market are subject to market risks, read all the related documents carefully before investing.

Focus Investment Ideas

All Stocks Available in MTF

Duration : 1 Year Horizon

Stock Name	Rating	CMP (Rs)	Target (Rs)	Upside (%)
State Bank of India	Buy	1,017	1,300	28%
Lenskart	Buy	536	655	22%
Shriram Finance	Buy	1,014	1,230	21%
Cummins India	Buy	5,498	6,600	20%
Titan	Buy	4,586	5,250	14%

Technical Outlook

Nifty Technical Outlook

NIFTY (CMP : 23882) Nifty immediate support is at 23750 then 23600 zone while resistance at 24000 then 24150 zones. Now till it holds below 24000 zones weakness could be seen towards 23750 then 23600 levels while on the upside hurdle have shifted lower to 24000 then 24150 zones.

5-Nifty50 - 08/07/26
EMA(CloseLine:200)



Investment in securities market are subject to market risks, read all the related documents carefully before investing.

Sensex Technical Outlook

Sensex (CMP : 76503) Sensex support is at 76000 then 75700 zones while resistance at 77000 then 77300 zones. Now till it holds below 77000 zones, weakness could be seen towards 76000 then 75700 zones while hurdles have shifted lower to 77000 then 77300 zones.

5-S&P BSESENSX - 08/07/26
EMA(CloseLine:200)



Investment in securities market are subject to market risks, read all the related documents carefully before investing.

Bank Nifty Technical Outlook

BANK NIFTY (CMP : 56742) Bank Nifty support is at 56250 then 56000 zones while resistance at 57000 then 57500 zones. Now till it holds below 57000 zones weakness could be seen towards 56250 then 56000 levels while on the upside hurdle is seen at 57000 then 57500 zones.

5-Niftybank - 08/07/26
EMA(CloseLine:200)



Investment in securities market are subject to market risks, read all the related documents carefully before investing.

Midcap100 Index Technical Outlook

- Index is facing rejection near 62500-63000 band

9-Jul-26



Nifty Midcap100 Stats

Advance	Decline
17	83

Smallcap250 Index Technical Outlook

9-Jul-26

- Index has closed below rising support trend line on daily chart.



Nifty SmallCap250 Stats

Advance	Decline
30	220

Sectoral Performance - Daily

- All the sectors ended on a bearish note

Indices	Closing 08-Jul	% Change			
		1-day	2-days	3-days	5-days
NIFTY 50	23882	-2.12%	-2.24%	-1.60%	-0.52%
NIFTY BANK	56743	-2.51%	-2.66%	-2.06%	-2.22%
NIFTY MIDCAP 100	61323	-1.55%	-1.84%	-1.39%	-1.11%
NIFTY SMALLCAP 250	17598	-1.98%	-2.66%	-2.21%	-1.14%
NIFTY FINANCIAL SERVICES	26324	-2.45%	-2.48%	-2.05%	-1.77%
NIFTY PRIVATE BANK	27592	-2.52%	-2.67%	-2.21%	-2.08%
NIFTY PSU BANK	8072	-2.72%	-3.14%	-3.99%	-5.88%
NIFTY IT	27555	-1.37%	1.02%	0.42%	6.93%
NIFTY FMCG	48977	-2.49%	-2.43%	-2.23%	-1.67%
NIFTY OIL & GAS	10999	-2.23%	-2.33%	-1.24%	-0.77%
NIFTY PHARMA	25430	-0.97%	-1.69%	-1.22%	0.98%
NIFTY AUTO	26733	-2.23%	-2.27%	-0.94%	-0.19%
NIFTY METAL	12469	-0.91%	-1.99%	-1.03%	0.60%
NIFTY REALTY	876	-1.87%	-3.42%	-1.67%	1.94%
NIFTY INDIA DEFENCE	9324	-1.67%	-3.29%	-2.61%	-2.42%

Sectoral Performance - Weekly

Name	LW Change	2W Change	3W Change	4W Change	5W Change
Nifty 50	-1.6	-0.72	-0.55	1.1	2.21
Nifty Bank	-2.06	-2.47	-1.63	-0.13	4.12
Nifty IT	0.42	0.82	0.47	-0.87	-5.02
Nifty Auto	-0.94	-0.91	0.56	1.67	2.17
Nifty Meta	-1.03	0.19	-4.24	-3	-5.69
Nifty Phar	-1.22	1.84	3.96	4.31	4.87
Nifty FMC	-2.23	-0.89	-1.17	0.31	1.4
Nifty Real	-1.67	6.02	7.89	13.82	13.92
Nifty Med	-3.96	-3.8	-4.15	-2.36	-3.33
Nifty PSU	-3.99	-6.53	-7.39	-5.35	-2.26

Technical – Conviction Delivery Idea

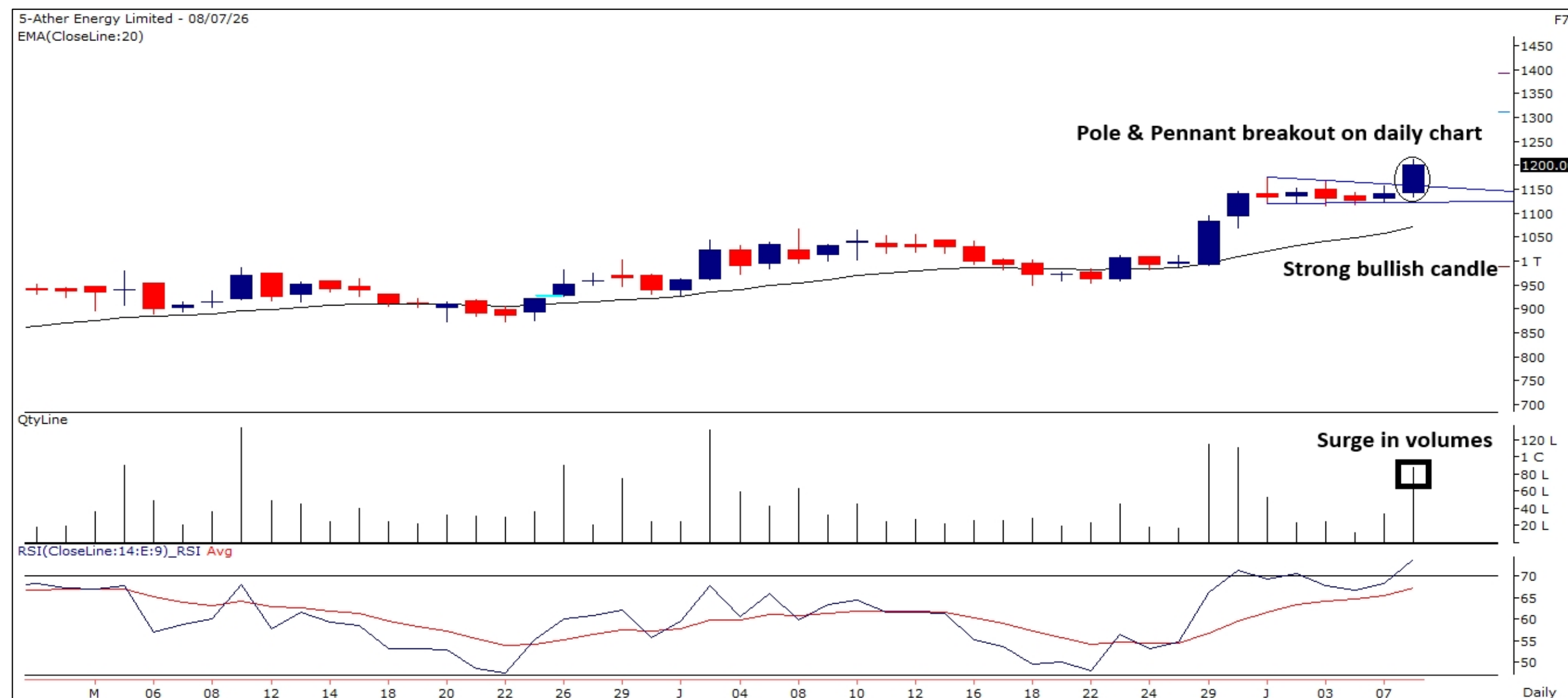
ATHER ENERGY LTD

(Mcap ₹ 45,975 Cr.)

MTF stock

- Stock has given Pole & Pennant breakout on daily chart.
- Noticeable volumes .
- RSI is positively placed.
- Strong bullish candle.
- We recommend to buy the stock at CMP ₹1200 with a SL of ₹ 1150 and a TGT of ₹ 1300.

RECOs	CMP	SL	TARGET	DURATION
BUY	1200	1150	1300	1 Week



Technical Stocks On Radar

EXIDE IND

(CMP: 421, Mcap ₹ 35,815 Cr.)

F&O Stock, MTF stock

- Stock has retested breakout and inching higher.
- Perfectly respecting 20 DEMA.
- Noticeable volumes.
- Immediate support at 408.

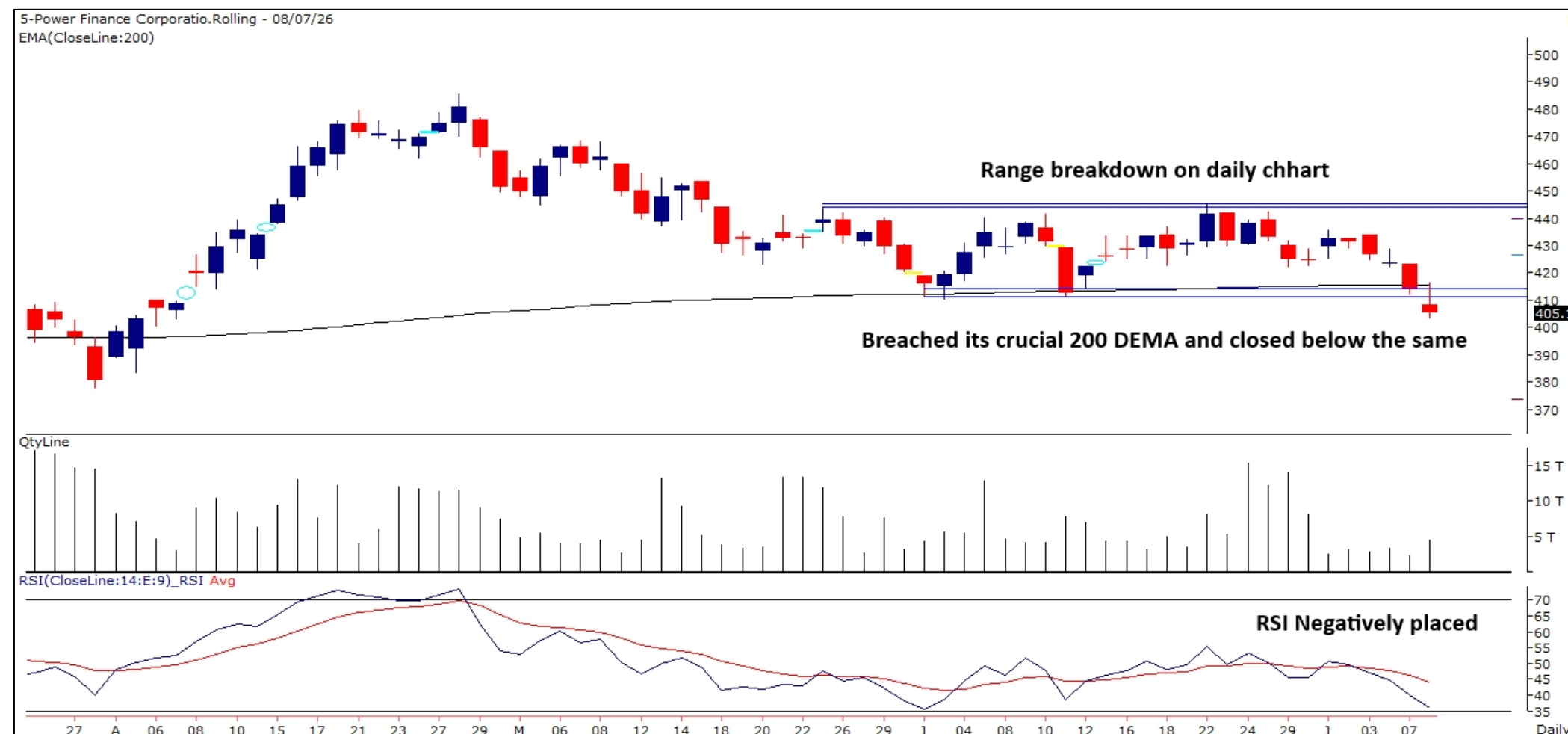


SELL 28TH JULY 2026 PFC FUT

(CMP: 405, Mcap ₹ 1,33,192 Cr.)

F&O Stock

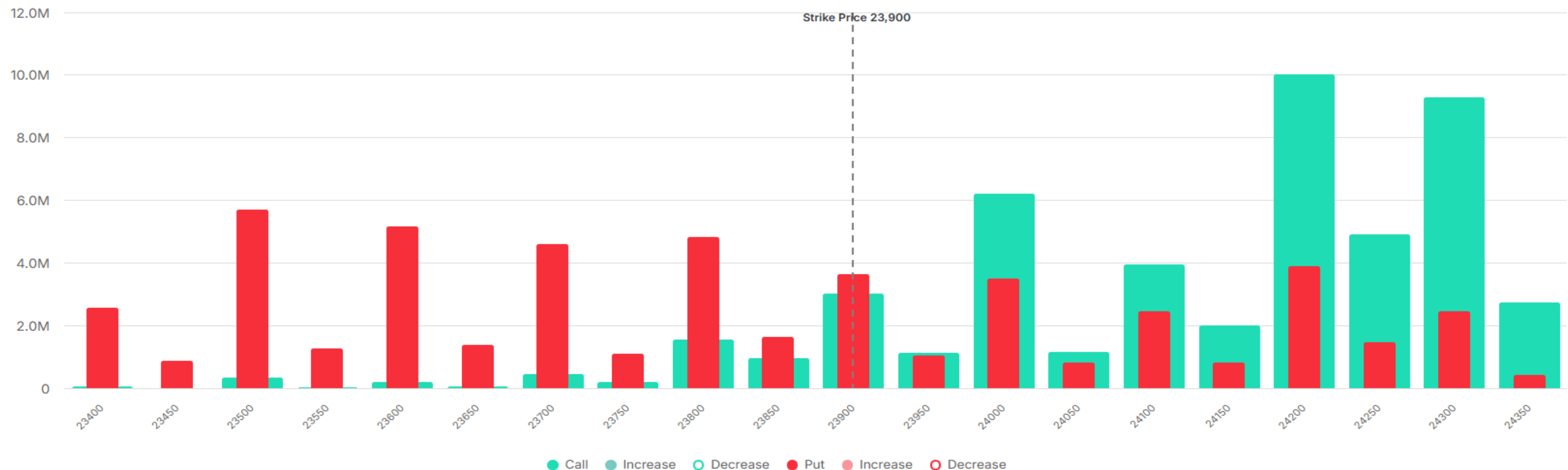
- Range breakdown on daily chart.
- Trading below all crucial moving averages.
- RSI negatively placed.
- Immediate resistance at 418.



Derivative Outlook

Nifty : Option Data

- Maximum Call OI is at 24200 then 24500 strike while Maximum Put OI is at 23500 then 23900 strike.
- Call writing is seen at 24200 then 24300 strike while Put writing is seen at 23600 then 23700 strike.
- Option data suggests a broader trading range in between 23300 to 24200 zones while an immediate range between 23500 to 24000 levels.





Option - Buying side strategy

Index	Single Leg Buying	Multi Leg Strategy
Nifty (Weekly)	23650 Put if it holds below 24000 zones	Bear Put Spread (Buy 23650 PE and Sell 23550 PE) at net premium cost of 25-30 points
Sensex (Weekly)	76200 Put if it holds below 77000 zones	Bear Put Spread (Buy 76200 PE and Sell 76000 PE) at net premium cost of 60-70 points
Bank Nifty (Monthly)	55000 Put if it holds below 57000 zones	Bear Put Spread (Buy 56500 PE and Sell 56000 PE) at net premium cost of 190-200 points

Option - Selling side strategy

Index	Writing
Nifty (Weekly)	22700 PE and 24650 CE
Sensex (Weekly)	74700 PE and 77800 CE
Bank Nifty (Monthly)	52000 PE and 60500 CE

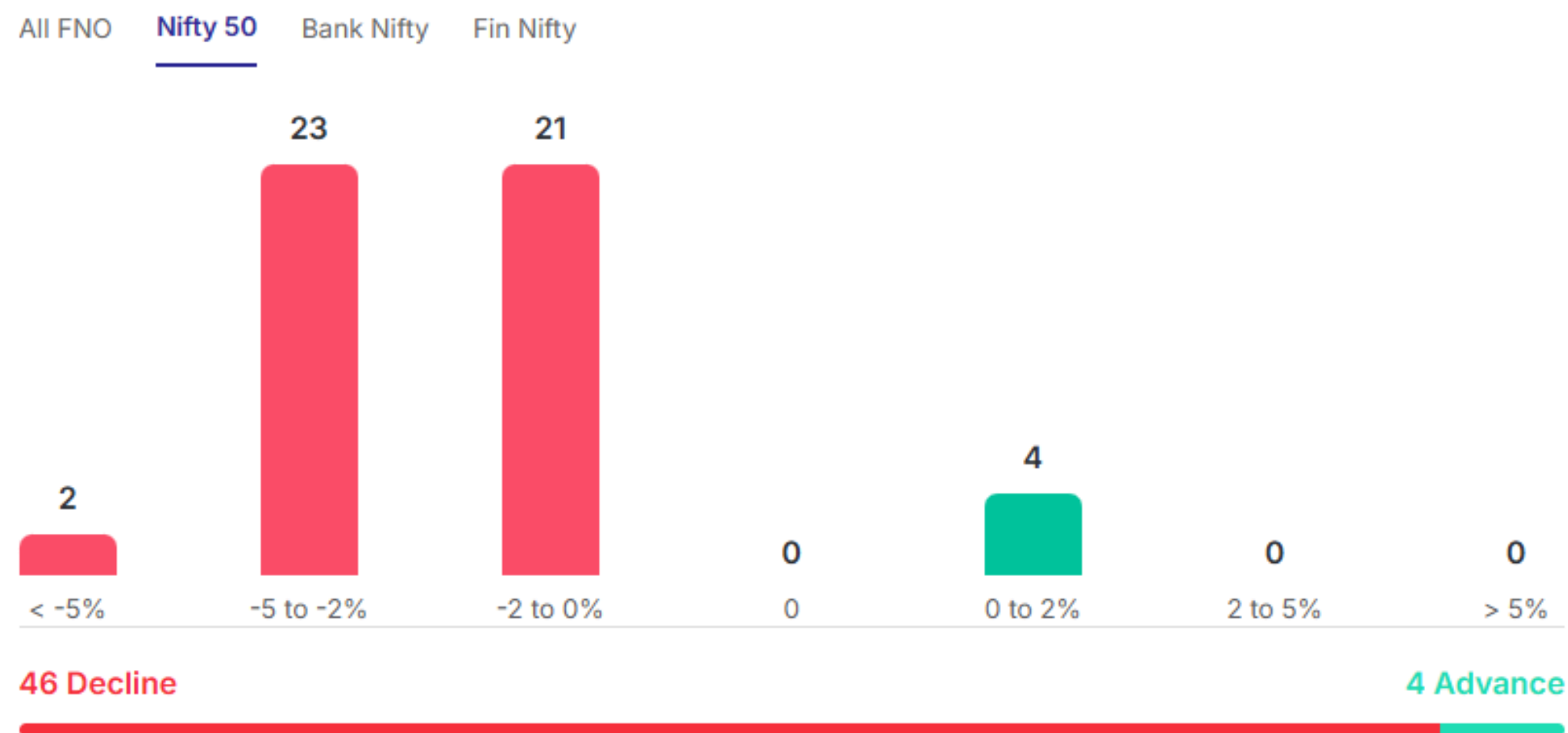
Weekly Option Range for Option Writers based on Different Confidence Band								
Date	9-Jul-26	Weekly Expiry	14-Jul-26	Days to weekly expiry	4			
Nifty		23882	India VIX		14.7			
Confidence Band	Probability	% Away From Spot	Range				Total Premium (Put + Call)	Types of Trades
			Put	Premium	Call	Premium		
1.00	68%	± 1.4%	23550	74	24250	52	126	Aggressive
1.25	79%	± 1.8%	23450	55	24350	36	91	Less Aggressive
1.50	87%	± 2.2%	23350	41	24450	25	66	Neutral
1.75	92%	± 2.6%	23250	31	24550	17	48	Conservative
2.00	95%	± 3.1%	23150	24	24650	12	35	Most Conservative
Date	9-Jul-26	Monthly Expiry	28-Jul-26	Days to weekly expiry	14			
Bank Nifty		56743						
Confidence Band	Probability	% Away From Spot	Range				Total Premium (Put + Call)	Types of Trades
			Put	Premium	Call	Premium		
1.00	68%	± 3.2%	54900	273	58500	298	571	Aggressive
1.25	79%	± 4.1%	54400	205	59000	192	397	Less Aggressive
1.50	87%	± 4.8%	54000	161	59400	137	298	Neutral
1.75	92%	± 5.7%	53500	120	59900	89	209	Conservative
2.00	95%	± 6.6%	53000	89	60400	58	147	Most Conservative

Investments in securities markets are subject to market risks. Please read all related documents carefully.

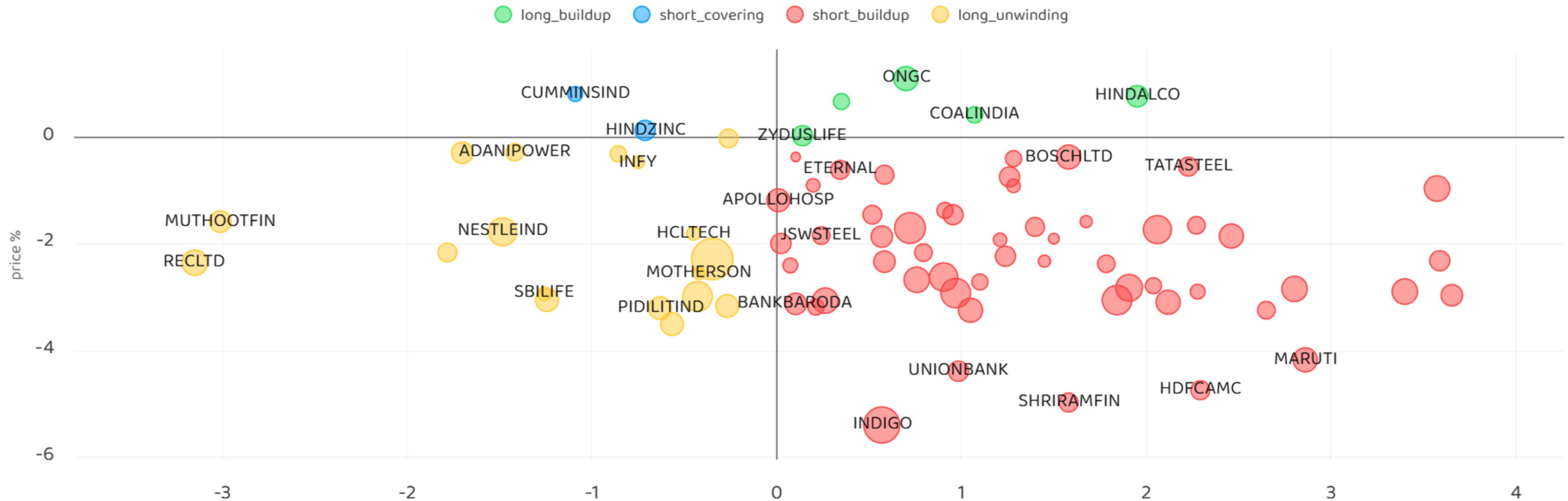
Nifty Advance Decline & Ban update

Stocks in Ban:

NIL



Stocks : Derivatives Outlook



Stocks : Options on radar

Stock	Call Strike	Trade	Buying Range	SL	TGT	Logic
BAJAJ_AUTO	10200 CE	Buy	230-240	200	300	Short Covering

Stock	Call Strike	Trade	Buying Range	SL	TGT	Logic
TATACONSUM	1090 PE	Buy	24-26	20	35	Short Buildup
ULTRACEMCO	11300 PE	Buy	230-250	190	290	Short Buildup
LT	3900 PE	Buy	75-80	60	110	Short Buildup
HINDUNILVR	2120 PE	Buy	36-39	30	50	Long Liquidation

Quant Outlook

Quant Intraday Sell Ideas

What is this?

Based on technical indicators this strategy gives 2 stocks that have a high likelihood to fall during the day (from open to close). This is an intraday Sell strategy which can provide a good cushioning during a black swan event.

Today's **Sell** Ideas:

Stock Names	Close Price	SL (1%)	TP (1%)
RECLTD (Sell)	348.8	352.2	345.3
BIOCON (Sell)	397	401	393

What are the rules?

- Stock names will be given at market open (9:15 am)
- Recommended time to entry: between 9:15 to 9:30 am.
- Entry: We short 2 stocks daily (intraday)
- Exit: we will exit at 3:15 as this is an intraday call
- SL: is placed at 1% of the open.
- Book profit: At 1% fall since open.
- In special situations the book profit might be delayed if the stock is in free fall.

Siddhartha Khemka
Head – Retail Research

Chandan Taparua, CMT, CFTE, MFTA
Head – Derivatives & Technical Research

Ruchit Jain
Head – Technical Research

Disclosures:

The following Disclosures are being made in compliance with the SEBI Research Analyst Regulations 2014 (herein after referred to as the Regulations).

Motilal Oswal Financial Services Ltd. (MOFSL) is a SEBI Registered Research Analyst having registration no. INH000000412 and BSE enlistment no. 5028. MOFSL, the Research Entity (RE) as defined in the Regulations, is engaged in the business of providing Stock broking services, Depository participant services & distribution of various financial products. MOFSL is a listed public company, the details in respect of which are available on www.motilaloswal.com. MOFSL is registered with the Securities & Exchange Board of India (SEBI) and is a registered Trading Member with National Stock Exchange of India Ltd. (NSE) and Bombay Stock Exchange Limited (BSE), Multi Commodity Exchange of India Limited (MCX) and National Commodity & Derivatives Exchange Limited (NCDEX) for its stock broking activities & is Depository participant with Central Depository Services Limited (CDSL) National Securities Depository Limited (NSDL), NERL, COMRIS and CCRL and is member of Association of Mutual Funds of India (AMFI) for distribution of financial products and Insurance Regulatory & Development Authority of India (IRDA) as Corporate Agent for insurance products and is a member of Association of Portfolio Managers in India (APMI) for distribution of PMS products. Details of associate entities of Motilal Oswal Financial Services Ltd. are available on the website at <http://onlinereports.motilaloswal.com/Dormant/documents/Associate%20Details.pdf>

Details of pending Enquiry Proceedings of Motilal Oswal Financial Services Limited are available on the website at <https://galaxy.motilaloswal.com/ResearchAnalyst/PublishViewLitigation.aspx>. As per Regulatory requirements, Research Audit Report is uploaded on www.motilaloswal.com > MOFSL-Important Links > MOFSL Research Analyst Compliance Audit Report.

MOFSL, its associates, Research Analyst or their relatives may have any financial interest in the subject company. MOFSL and/or its associates and/or Research Analyst or their relatives may have actual beneficial ownership of 1% or more securities in the subject company at the end of the month immediately preceding the date of publication of the Research Report or date of the public appearance. MOFSL and its associate company(ies), their directors and Research Analyst and their relatives may have any other potential conflict of interests at the time of publication of the research report or at the time of public appearance, however the same shall have no bearing whatsoever on the specific recommendations made by the analyst(s), as the recommendations made by the analyst(s) are completely independent of the views of the associates of MOFSL even though there might exist an inherent conflict of interest in some of the stocks mentioned in the research report..

In the past 12 months, MOFSL or any of its associates may have:

- a) received any compensation/other benefits from the subject company of this report
- b) managed or co-managed public offering of securities from subject company of this research report,
- c) received compensation for investment banking or merchant banking or brokerage services from subject company of this research report,
- d) received compensation for products or services other than investment banking or merchant banking or brokerage services from the subject company of this research report.

- MOFSL and its associates have not received any compensation or other benefits from the subject company or third party in connection with the research report.
- Subject Company may have been a client of MOFSL or its associates during twelve months preceding the date of distribution of the research report.
- Research Analyst may have served as director/officer/employee in the subject company.
- MOFSL and research analyst may engage in market making activity for the subject company.

MOFSL and its associate company(ies), and Research Analyst and their relatives from time to time may have:

a) a long or short position in, act as principal in, and buy or sell the securities or derivatives thereof of companies mentioned herein.

(b) be engaged in any other transaction involving such securities and earn brokerage or other compensation or act as a marketmaker in the financial instruments of the company(ies) discussed herein or act as an advisor or lender/borrower to such company(ies) or may have any other potential conflict of interests with respect to any recommendation and other related information and opinions.; however the same shall have no bearing whatsoever on the specific recommendations made by the analyst(s), as the recommendations made by the analyst(s) are completely independent of the views of the associates of MOFSL even though there might exist an inherent conflict of interest in some of the stocks mentioned in the research report.

Above disclosures include beneficial holdings lying in demat account of MOFSL which are opened for proprietary investments only. While calculating beneficial holdings, It does not consider demat accounts which are opened in name of MOFSL for other purposes (i.e holding client securities, collaterals, error trades etc.). MOFSL also earns DP income from clients which are not considered in above disclosures.

To enhance transparency, MOFSL has incorporated a Disclosure of Interest Statement in this document. This should, however, not be treated as endorsement of the views expressed in the report. MOFSL and / or its affiliates do and seek to do business including investment banking with companies covered in its research reports. As a result, the recipients of this report should be aware that MOFSL may have a potential conflict of interest that may affect the objectivity of this report.

Terms & Conditions:

This report has been prepared by MOFSL and is meant for sole use by the recipient and not for circulation. The report and information contained herein is strictly confidential and may not be altered in any way, transmitted to, copied or distributed, in part or in whole, to any other person or to the media or reproduced in any form, without prior written consent of MOFSL. The report is based on the facts, figures and information that are considered true, correct, reliable and accurate. The intent of this report is not recommendatory in nature. The information is obtained from publicly available media or other sources believed to be reliable. Such information has not been independently verified and no guaranty, representation of warranty, express or implied, is made as to its accuracy, completeness or correctness. All such information and opinions are subject to change without notice. The report is prepared solely for informational purpose and does not constitute an offer document or solicitation of offer to buy or sell or subscribe for securities or other financial instruments for the clients. Though disseminated to all the customers simultaneously, not all customers may receive this report at the same time. MOFSL will not treat recipients as customers by virtue of their receiving this report.

Analyst Certification

The views expressed in this research report accurately reflect the personal views of the analyst(s) about the subject securities or issues, and no part of the compensation of the research analyst(s) was, is, or will be directly or indirectly related to the specific recommendations and views expressed by research analyst(s) in this report.

Disclosure of Interest Statement

Analyst ownership of the stock No

A graph of daily closing prices of securities is available at www.nseindia.com, www.bseindia.com. Research Analyst views on Subject Company may vary based on Fundamental research and Technical Research. Proprietary trading desk of MOFSL or its associates maintains arm's length distance with Research Team as all the activities are segregated from MOFSL research activity and therefore it can have an independent view with regards to subject company for which Research Team have expressed their views.

Regional Disclosures (outside India)

This report is not directed or intended for distribution to or use by any person or entity resident in a state, country or any jurisdiction, where such distribution, publication, availability or use would be contrary to law, regulation or which would subject MOFSL & its group companies to registration or licensing requirements within such jurisdictions.

For Hong Kong:

This report is distributed in Hong Kong by Motilal Oswal capital Markets (Hong Kong) Private Limited, a licensed corporation (CE AYY-301) licensed and regulated by the Hong Kong Securities and Futures Commission (SFC) pursuant to the Securities and Futures Ordinance (Chapter 571 of the Laws of Hong Kong) "SFO". As per SEBI (Research Analyst Regulations) 2014 Motilal Oswal Financial Services Limited (SEBI Reg No. INH000000412) has an agreement with Motilal Oswal capital Markets (Hong Kong) Private Limited for distribution of research report in Hong Kong. This report is intended for distribution only to "Professional Investors" as defined in Part I of Schedule 1 to SFO. Any investment or investment activity to which this document relates is only available to professional investor and will be engaged only with professional investors." Nothing here is an offer or solicitation of these securities, products and services in any jurisdiction where their offer or sale is not qualified or exempt from registration. The Indian Analyst(s) who compile this report is/are not located in Hong Kong & are not conducting Research Analysis in Hong Kong.

For U.S.

MOTILAL Oswal Financial Services Limited (MOFSL) is not a registered broker - dealer under the U.S. Securities Exchange Act of 1934, as amended (the "1934 act") and under applicable state laws in the United States. In addition MOFSL is not a registered investment adviser under the U.S. Investment Advisers Act of 1940, as amended (the "Advisers Act" and together with the 1934 Act, the "Acts"), and under applicable state laws in the United States. Accordingly, in the absence of specific exemption under the Acts, any brokerage and investment services provided by MOFSL, including the products and services described herein are not available to or intended for U.S. persons. This report is intended for distribution only to "Major Institutional Investors" as defined by Rule 15a-6(b)(4) of the Exchange Act and interpretations thereof by SEC (henceforth referred to as "major institutional investors"). This document must not be acted on or relied on by persons who are not major institutional investors. Any investment or investment activity to which this document relates is only available to major institutional investors and will be engaged in only with major institutional investors. In reliance on the exemption from registration provided by Rule 15a-6 of the U.S. Securities Exchange Act of 1934, as amended (the "Exchange Act") and interpretations thereof by the U.S. Securities and Exchange Commission ("SEC") in order to conduct business with Institutional Investors based in the U.S., MOFSL has entered into a chaperoning agreement with a U.S. registered broker-dealer, Motilal Oswal Securities International Private Limited. ("MOSIPL"). Any business interaction pursuant to this report will have to be executed within the provisions of this chaperoning agreement.

The Research Analysts contributing to the report may not be registered /qualified as research analyst with FINRA. Such research analyst may not be associated persons of the U.S. registered broker-dealer, MOSIPL, and therefore, may not be subject to NASD rule 2711 and NYSE Rule 472 restrictions on communication with a subject company, public appearances and trading securities held by a research analyst account.

For Singapore

In Singapore, this report is being distributed by Motilal Oswal Capital Markets (Singapore) Pte. Ltd. ("MOCMSPL") (UEN 201129401Z), which is a holder of a capital markets services license and an exempt financial adviser in Singapore. This report is distributed solely to persons who (a) qualify as "institutional investors" as defined in section 4A(1)(c) of the Securities and Futures Act of Singapore ("SFA") or (b) are considered "accredited investors" as defined in section 2(1) of the Financial Advisers Regulations of Singapore read with section 4A(1)(a) of the SFA. Accordingly, if a recipient is neither an "institutional investor" nor an "accredited investor", they must immediately discontinue any use of this Report and inform MOCMSPL.

In respect of any matter arising from or in connection with the research you could contact the following representatives of MOCMSPL. In case of grievances for any of the services rendered by MOCMSPL write to grievances@motilaloswal.com.

Nainesh Rajani

Email: nainesh.rajani@motilaloswal.com

Contact: (+65) 8328 0276

Disclaimer:

This report is intended for distribution to Retail Investors.

The report and information contained herein is strictly confidential and meant solely for the selected recipient and may not be altered in any way, transmitted to, copied or distributed, in part or in whole, to any other person or to the media or reproduced in any form, without prior written consent. This report and information herein is solely for informational purpose and may not be used or considered as an offer document or solicitation of offer to buy or sell or subscribe for securities or other financial instruments. Nothing in this report constitutes investment, legal, accounting and tax advice or a representation that any investment or strategy is suitable or appropriate to your specific circumstances. The securities discussed and opinions expressed in this report may not be suitable for all investors, who must make their own investment decisions, based on their own investment objectives, financial positions and needs of specific recipient. This may not be taken in substitution for the exercise of independent judgment by any recipient. Each recipient of this document should make such investigations as it deems necessary to arrive at an independent evaluation of an investment in the securities of companies referred to in this document (including the merits and risks involved), and should consult its own advisors to determine the merits and risks of such an investment. The investment discussed or views expressed may not be suitable for all investors. Certain transactions-including those involving futures, options, another derivative products as well as non-investment grade securities - involve substantial risk and are not suitable for all investors. No representation or warranty, express or implied, is made as to the accuracy, completeness or fairness of the information and opinions contained in this document. The Disclosures of Interest Statement incorporated in this document is provided solely to enhance the transparency and should not be treated as endorsement of the views expressed in the report. This information is subject to change without any prior notice. The Company reserves the right to make modifications and alternations to this statement as may be required from time to time without any prior approval. MOFSL, its associates, their directors and the employees may from time to time, effect or have effected an own account transaction in, or deal as principal or agent in or for the securities mentioned in this document. They may perform or seek to perform investment banking or other services for, or solicit investment banking or other business from, any company referred to in this report. Each of these entities functions as a separate, distinct and independent of each other. The recipient should take this into account before interpreting the document. This report has been prepared on the basis of information that is already available in publicly accessible media or developed through analysis of MOFSL. The views expressed are those of the analyst, and the Company may or may not subscribe to all the views expressed therein. This document is being supplied to you solely for your information and may not be reproduced, redistributed or passed on, directly or indirectly, to any other person or published, copied, in whole or in part, for any purpose. This report is not directed or intended for distribution to, or use by, any person or entity who is a citizen or resident of or located in any locality, state, country or other jurisdiction, where such distribution, publication, availability or use would be contrary to law, regulation or which would subject MOFSL to any registration or licensing requirement within such jurisdiction. The securities described herein may or may not be eligible for sale in all jurisdictions or to certain category of investors. Persons in whose possession this document may come are required to inform themselves of and to observe such restriction. Neither the Firm, not its directors, employees, agents or representatives shall be liable for any damages whether direct or indirect, incidental, special or consequential including lost revenue or lost profits that may arise from or in connection with the use of the information. The person accessing this information specifically agrees to exempt MOFSL or any of its affiliates or employees from, any and all responsibility/liability arising from such misuse and agrees not to hold MOFSL or any of its affiliates or employees responsible for any such misuse and further agrees to hold MOFSL or any of its affiliates or employees free and harmless from all losses, costs, damages, expenses that may be suffered by the person accessing this information due to any errors and delays.

This report is meant for the clients of Motilal Oswal only.

Investment in securities market are subject to market risks. Read all the related documents carefully before investing.

Registration granted by SEBI, enlistment as RA with Exchange and certification from NISM in no way guarantee performance of the intermediary or provide any assurance of returns to investors

Registered Office Address: Motilal Oswal Tower, Rahimtullah Sayani Road, Opposite Parel ST Depot, Prabhadevi, Mumbai-400025; Tel No.: 022 - 71934200 / 71934263; www.motilaloswal.com. Correspondence Address: Palm Spring Centre, 2nd Floor, Palm Court Complex, New Link Road, Malad (West), Mumbai- 400 064. Tel No: 022 71881000. Details of Compliance Officer: Neeraj Agarwal, Email Id: na@motilaloswal.com, Contact No.:022-40548085.

Grievance Redressal Cell:

Contact Person	Contact No.	Email ID
Ms. Hemangi Date	022 40548000 / 022 67490600	query@motilaloswal.com
Ms. Kumud Upadhyay	022 40548082	servicehead@motilaloswal.com
Mr. Ajay Menon	022 40548083	am@motilaloswal.com
Mr. Neeraj Agarwal	022 40548085	na@motilaloswal.com
Mr. Siddhartha Khemka	022 50362452	po.research@motilaloswal.com

Registration details: Motilal Oswal Financial Services Ltd. (MOFSL): INZ000158836 (BSE/NSE/MCX/NCDEX); CDSL and NSDL: IN-DP-16-2015; Research Analyst: INH000000412, BSE enlistment no. 5028, AMFI registered Mutual Fund Distributor and SIF Distributor: ARN.: 146822. IRDA Corporate Agent – CA0579, APMI: APRN00233. Motilal Oswal Financial Services Ltd. is a distributor of Mutual Funds, PMS, Fixed Deposit, Insurance, Bond, NCDs and IPO products.

Customer having any query/feedback/clarification may write to query@motilaloswal.com. In case of grievances for any of the services rendered by Motilal Oswal Financial Services Limited (MOFSL) write to grievances@motilaloswal.com, for DP to dp grievances@motilaloswal.com.

Investment in securities market are subject to market risks, read all the related documents carefully before investing.