

Dt.: 5<sup>th</sup> Apr, 2024

EXPIRY	S2	S1	PIVOT	R1	R2
<b>PRECIOUS METALS</b>					
<b>GOLD</b>	60632	61740	62560	63485	63950
<b>SILVER</b>	72629	73465	75750	76526	78015

EXPIRY	S2	S1	PIVOT	R1	R2
<b>ENERGY</b>					
<b>CRUDEOIL</b>	5354	5500	5710	5854	5921
<b>NAT GAS</b>	244.8	247.4	249	251.6	254.4

EXPIRY	S2	S1	PIVOT	R1	R2
<b>BASE METALS</b>					
<b>COPPER</b>	714	728	732	738	745
<b>NICKEL</b>	1101	1135	1151	1188	1202
<b>ZINC</b>	198.4	200.4	202.5	203.5	204.9
<b>LEAD</b>	146.4	147.8	149.4	151.2	153
<b>ALUMINUM</b>	145.8	148.1	150.3	153.4	155.4

SHORT TERM TREND (MCX)				
	Trend	Reversal	Support	Resistance
<b>Gold</b>	Positive	55410	48520	53450
<b>Silver</b>	Positive	74550	76000	70541
<b>Crude</b>	Positive	5950	6600	6800
<b>Copper</b>	Positive	755	701	745
<b>Lead</b>	Positive	202	195	201
<b>Nickel</b>	Positive	1220	1080	1205
<b>Aluminum</b>	Positive	153	144	151
<b>Zinc</b>	Positive	205	185	204

### RESEARCH DESK

Sacchitanand Uttekar - VP - Research (Derivatives & Technicals)  
 Bhavik Patel - Sr. Technical Analyst (Currency & Commodities)

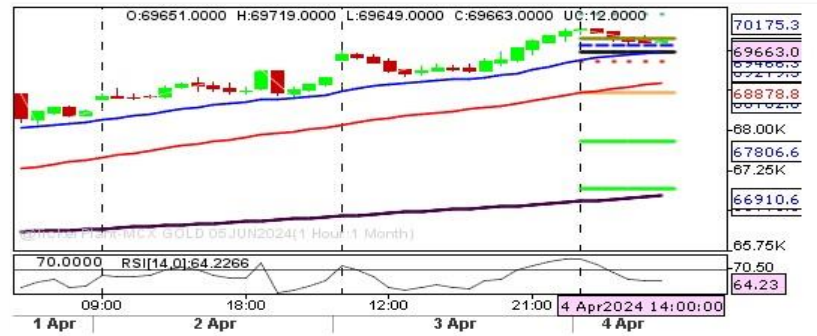
COUNTRY	TIME	ECONOMIC EVENT	SURVEY	PREVIOUS

**Disclaimer:** Investments in securities market are subject to market risk, read all the related documents carefully before investing.

The securities quoted are for illustration only and are not recommendatory | Registration granted by SEBI and certification from NISM in no way guarantee performance of the intermediary or provide any assurance of returns to investors.

**Disclaimer:** This document is for private circulation and information purpose only and should not be regarded as an investment, trading, taxation-legal or price-risk management advice. In no circumstances it is considered as an offer to sell or a solicitation of any offer to buy or sell the Currency derivatives mentioned herein. We and our affiliates, group-companies, directors and employees, and directors and employees of our affiliates and group-companies, including persons involved in the preparation or issuance of this material may (a) have positions in Currency (derivatives or physical) mentioned hereby or (b) have other positions which might have conflicting interest with respect to any related information. The information contained hereby may have been taken from sources which we believe are reliable. We do not guarantee that such information is accurate or complete and it should not be relied upon as such. Any opinion expressed reflects judgments at this date & are subject to change without notice. Risk of loss in Currency derivatives trading can be substantial. Persons trading in Currency Derivatives should consider the suitability of trading based upon their resources, risk appetite & other relevant information; and understand that statements regarding future prospects may not be realized.

### GOLD CHART (Hourly)



Gold traded fresh all time high as Fed is on course for three rate cut this year. Now some correction should be waited. It is overbought and so sell on rise near 70000 for tgt of 69000 and stoploss of 70400

### CRUDE CHART (Hourly)



Crude Oil is correcting after strong up rally. Sell on rise near 7200 for tgt of 7050 and stoploss of 7280.

### BASE METAL UPDATE

Base metals are trading mixed as yesterday's weak European PMI was negative for base metals. Nickel continues to outperform while Aluminum continues to underperform.