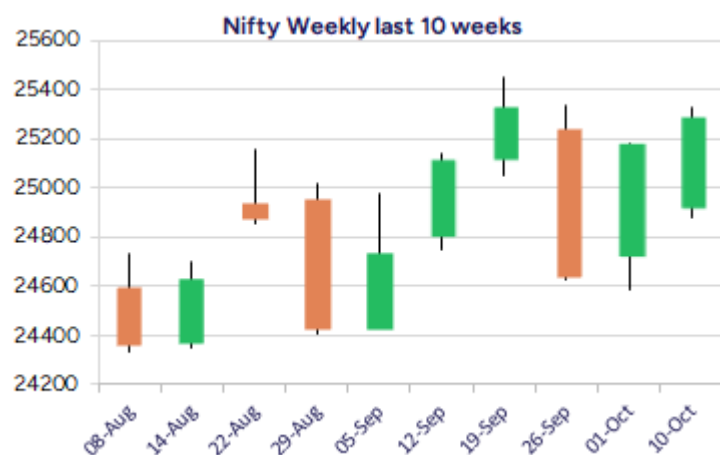
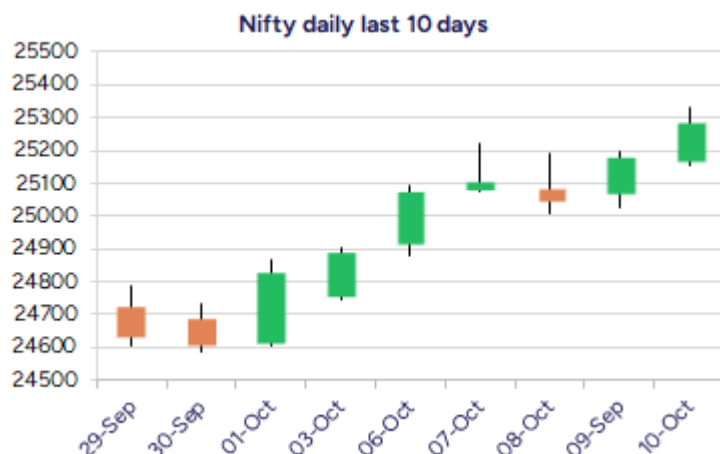


Date: 13<sup>th</sup> October 2025

\* Sensex 82500.82 + 328.72

\* Nifty 25285.35 + 103.55

\* Bank Nifty 56609.75 + 417.70



\*Blue candle → Close rate > Open rate \* Red candle → Close rate < Open rate

## Market Preview

### Nifty extends gains; bias remains optimistic

Nifty gained further closing near the 25300 zone with the broader markets also showing active participation to support the benchmark index and can anticipate for further rise in the coming days. BankNifty witnessed a decent positive move to close above the 56600 zone with bias getting better anticipating for further upward move in the coming days. The market breadth was strong with the advance decline indicating a ratio of 2:1 at close.

## Market Forecast

### Nifty daily range 25150 - 25500

Nifty has continued with the positive move gaining further crossing the 25300 zone during the intraday with bias and sentiment improving once again with the broader markets showing signs of positive move anticipating for further rise in the coming days. The index would need a decisive close above the important hurdle at 25300 zone to establish conviction and thereafter, can expect for fresh upward move with 25700 level as the next immediate target.

BankNifty, has shown signs of gaining strength further to move past the 56600 zone with bias improving and the frontline banking stocks picking up well with further upside gain visible in the coming days. With the 55600 level positioned as the near-term support for the index, we can anticipate for further upward move for target of 57700 zone in the coming days with sentiment easing out and maintaining an optimistic approach with the ongoing festive season.

The support for the day is seen at 25150 levels, while the resistance is seen at 25500 levels. BankNifty would have the daily range of 56200-57300 levels.

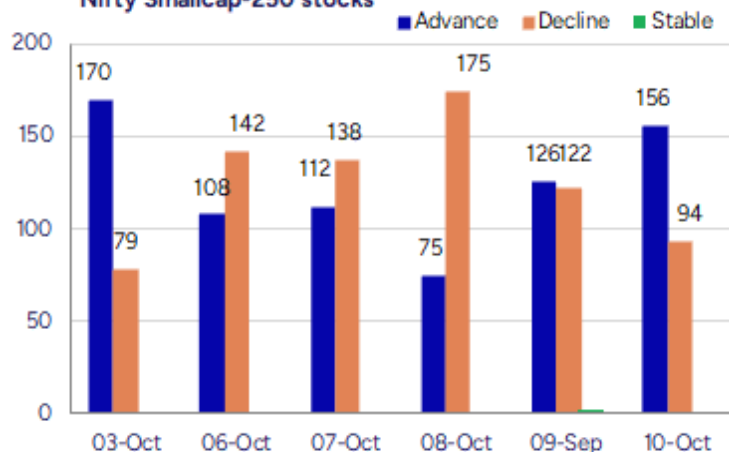
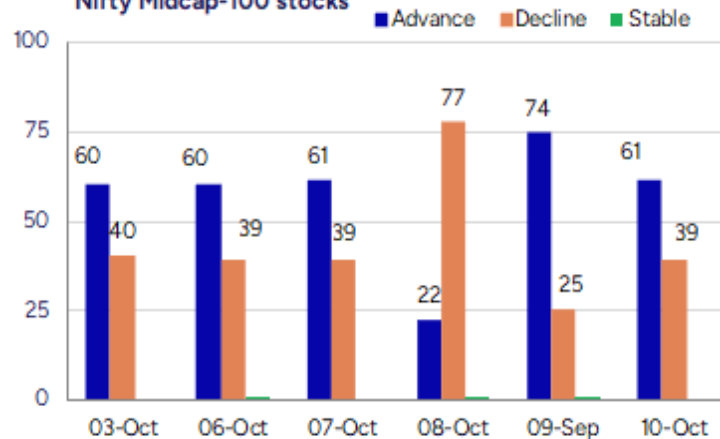
Indices	Period	Closing	% Chng	Trend	Reversal	2 Sup	1 Sup	Pivot	1 Res	2 Res
Nifty	Daily	25285.35	0.41%	7	25118.90	25084	25185	25258	25358	25432
	Weekly	25285.35	1.57%	1	25051.10	24719	25002	25166	25450	25614
	Monthly	24611.10	0.75%	-2	25016.70	23820	24215	24828	25224	25837
Bank Nifty	Daily	56609.75	0.74%	7	56310.70	55900	56255	56507	56863	57115
	Weekly	56609.75	1.84%	2	55238.95	55340	55975	56368	57002	57395
	Monthly	54635.85	1.83%	-2	56782.20	52417	53526	54680	55789	56942
Sensex	Daily	82500.82	0.40%	7	81946.00	81828	82164	82409	82746	82990
	Weekly	82500.82	1.59%	1	81626.50	80609	81555	82104	83051	83600
	Monthly	80267.62	0.57%	-3	82019.05	77784	79026	81071	82312	84357

**Gainers - Losers ( Nifty 500 Stocks )**
**Gainers**

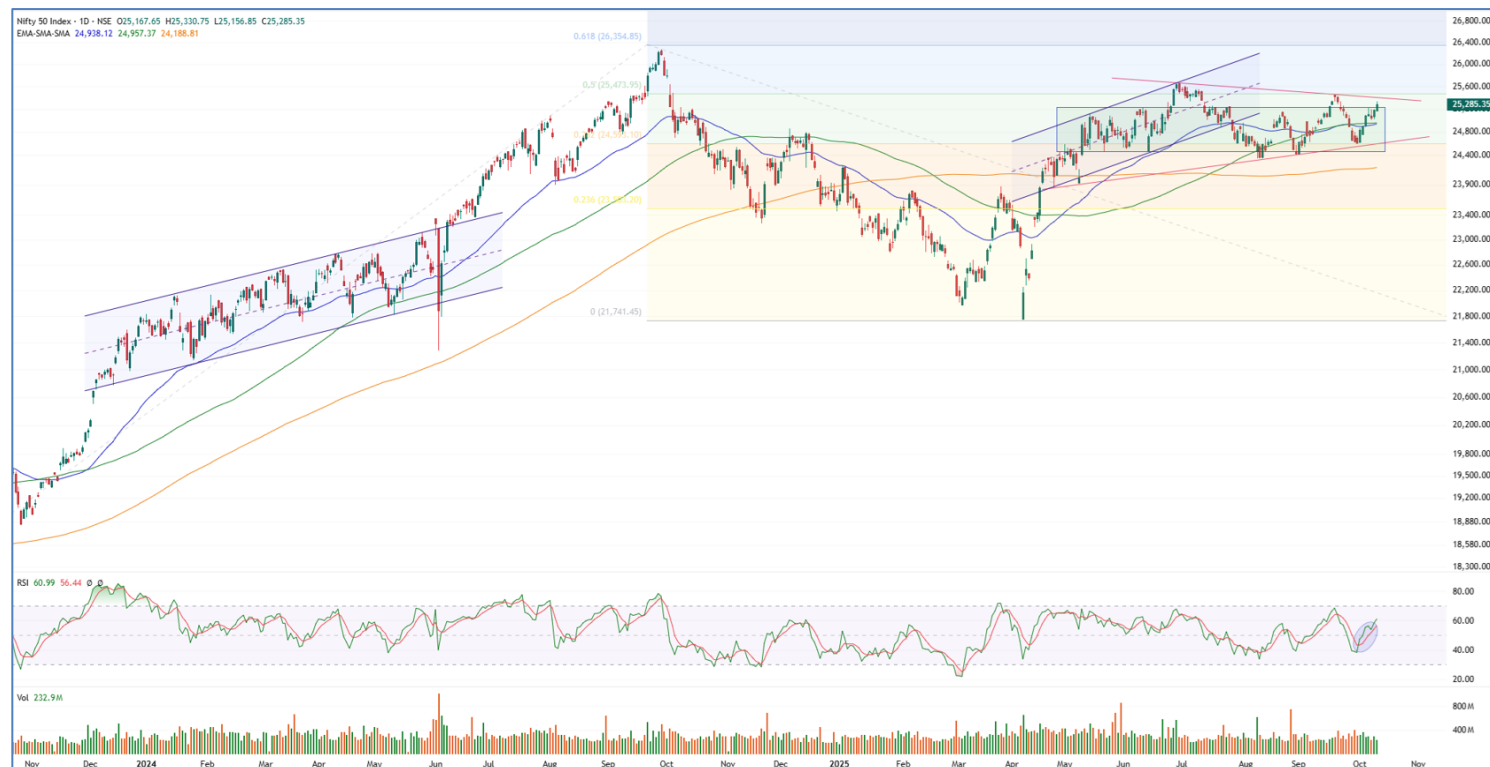
Company Name	Last Price	% Gain	Volume
Utssav CZ Gold	195.65	19.44	538800
Century Extr	33.95	17.03	4808296
SAR Televenture	202.5	16.11	315500
AGI Infra	287.9	15.61	4309375
GeeCee Ventures	368.4	11.64	114986
Esprit Stones	79.4	10.35	70400
Sharp Chucks	104.5	10	58000

**Losers**

Company Name	Last Price	% Loss	Volume
Capital Trust	30.91	-31.11	4476
Indian Emulsifi	118.35	-9.41	105500
Service Care	45.05	-9.36	44000
Bluestone Jewel	702.05	-7.78	7586151
Elecon Eng	556.85	-7.78	3778748
Cedaar Textile	98.55	-7.51	8000
Neptune Petro	157.25	-6.95	10000

**Nifty Smallcap-250 stocks**

**Nifty Midcap-100 stocks**


## Nifty Daily chart with RSI indicator



## BankNifty Daily chart with RSI indicator

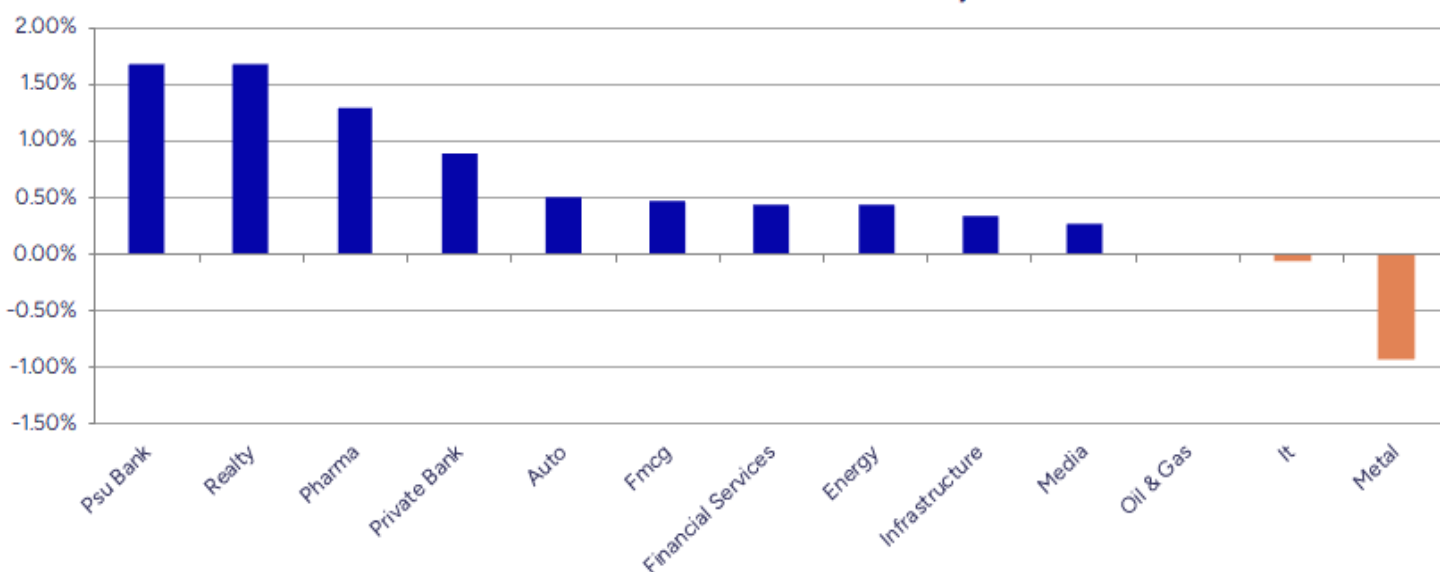


Breakouts - Cross above 200 DMA				Breakdown - Cross below 200 DMA			
Company Name	LCP	Change %	200 DMA	Company Name	LCP	Change %	200 DMA
Sangam India	434.9	7.82	403.37	Signpost India	254.25	-2.83	261.65
Tarapur Trans	31.85	5.36	30.23	Eimco Elecon	1946	-2.78	2001.57
Sharp Chucks	104.5	4.31	100.18	Rajdarshan Ind	46.41	-1.80	47.26
Bang Overseas	57.05	3.05	55.36	Sameera Agro	17.05	-1.67	17.34
Reliance Power	48.27	2.61	47.04	Z-Tech India	578.75	-1.64	588.39
Mahindra Life	369.8	2.46	360.92	Elecon Eng	556.85	-1.60	565.93
OM Infra	128.92	2.20	126.14	NBI Industrial	2566.8	-1.45	2604.58
Repco Home	394.4	2.04	386.51	Wanbury	252	-1.43	255.65
Tembo Global	577.8	1.95	566.76	Ideaforge Tech	477.45	-1.42	484.33
Moxsh Overseas	38.1	1.95	37.37	Repro India	491.7	-1.12	497.25
KRN Heat Ex	845.75	1.94	829.62	Uttam Sugar	258.14	-1.03	260.82
Positron Energy	330	1.93	323.76	Madhav Copper	50.8	-0.84	51.23
SP Refractories	166.05	1.85	163.03	Ramdevbaba Solv	120.7	-0.81	121.68
Greenlam Ind	252.92	1.75	248.56	KM Sugar Mills	28.7	-0.59	28.87
Zensar Tech	798.65	1.70	785.31	Sanstar	95.75	-0.53	96.26
Sotac Pharma	130	1.66	127.88	Kiri Industries	585.2	-0.32	587.07
RPG Life	2315.6	1.63	2278.47	KDDL	2689.3	-0.20	2694.69
Heads UP Vent	10.85	1.50	10.69	Airo Lam	107.73	-0.18	107.92

\* Stocks crossing above its Simple Moving Average (200DMA)

\* Stocks crossing below its Simple Moving Average (200DMA)

Sectoral Indices - Gainers Losers for the day



Stocks witnessing a volume surge as compared to their 5 day average volur

Watch out for the stocks that have seen a huge spurt in its share price over the last three days

Volume Shockers - NSE					
Company name	LCP	% Chg	Volume	Avg Vol *	% Chg
Spaisa Capita	328.7	-4.79	8785081	15765	55625
Sangam India	434.9	8.52	1756139	10783	16187
Tata Comm	1862.5	9.77	12451190	223716	5466
Krishival Foods	464.85	-1.43	48692	1200	3958
Atal	22.6	-1.61	2839711	100889	2715
Cool Caps	85	3.79	202500	8400	2311
AGI Infra	288	15.65	4317801	184888	2235
Jyoti CNC Auto	964.4	5.51	8973850	409809	2090
R M Drip & Spri	69.37	0.25	209218	9800	2035
Kavveri Defence	119.71	5	578113	28271	1945
BEW Engineering	132.25	-5.23	23000	1125	1944
Redington	290.1	8	37530096	1853571	1925
Netweb	4007	1.09	3200721	163390	1859
ISGEC Heavy Eng	911.15	4.65	702155	35847	1859
Sigma Solve	52.55	1.06	175632	9030	1845
Vishnu Prakash	97.61	9.91	15569691	906934	1617
Kingfa Science	4666.5	4.71	31721	2044	1452
Nagreeka Cap	38.87	6.49	819489	59215	1284
Destiny Logisti	132.55	1.42	81000	6000	1250
Jindal Photo	1513	9.11	262399	20496	1180

\* the Average Volume of last 5 days

Price Shockers - NSE				
Company name	LCP	Prv Close	% Chg	Volume
Jindal Photo	1513	1146	32.02	262399
WE WIN	65.49	49.7	31.77	45523
Nagreeka Cap	38.87	29.84	30.26	819489
Keynote Finance	318.6	248.33	28.3	33139
ABM Inter	58.79	46.5	26.43	5829
Palred Tech	67.51	55.3	22.08	246036
Hybrid Fin Ser	19.05	15.68	21.49	108550
Maan Aluminium	133.44	110.16	21.13	610189
Salzer Electro	921.1	764.1	20.55	2105607
GM Breweries	886.2	738.25	20.04	2570168
Kalyani Forge	783.3	661.75	18.37	2810
Jindal Poly Inv	1058.1	897.25	17.93	129127
Hercules Hoists	203.94	173.88	17.29	99563
Tarapur Trans	31.85	27.29	16.71	258378
BGR Energy	335.58	289.9	15.76	44246
Dreamfolks Ser.	126.35	109.16	15.75	84504
Visa Steel	57.75	49.9	15.73	13135
Manav Infra Pro	27.6	23.9	15.48	12000
Saatvik Green	530.75	460	15.38	3278789
Sky Gold	342.65	297.35	15.23	2412578

\* the % price rise of the last 3 days



Nifty 50 stocks - Summary Details											
Symbol	LTP	Chng	% Chng	Volume (lacs)	Turnover (crs.)	52w High	Diff with 52w H	52w Low	Diff with 52w L	365 days % chng	30 days % chng
NIFTY 50	25285.35	103.55	0.41%	2329.08	21746.80	25669.35	1.50%	21743.65	16.29%	1.65%	0.67%
ADANIENT	2542.10	-0.30	-0.01%	6.90	176.13	3211.00	20.83%	2025.00	25.54%	10.02%	-19.56%
ADANIPTS	1411.30	15.70	1.12%	13.59	191.74	1494.00	5.54%	995.65	41.75%	3.51%	-1.62%
APOLLOHOSP	7690.00	-5.00	-0.06%	2.74	210.62	7980.00	3.63%	6001.00	28.15%	-1.18%	11.13%
ASIANPAINT	2338.60	2.20	0.09%	11.17	262.03	3146.70	25.68%	2124.75	10.06%	-7.68%	-24.34%
AXISBANK	1182.50	15.10	1.29%	69.33	820.09	1247.00	5.17%	933.50	26.67%	10.60%	1.22%
BAJAJ-AUTO	8943.00	133.00	1.51%	2.29	203.58	12030.95	25.67%	7089.35	26.15%	-6.61%	-25.90%
BAJAJFINSV	2008.50	-6.10	-0.30%	7.72	155.29	2135.00	5.93%	1551.65	29.44%	0.31%	9.60%
BAJFINANCE	1025.00	0.90	0.09%	37.14	380.15	1036.00	1.06%	645.10	58.89%	8.45%	-85.75%
BEL	412.15	2.80	0.68%	138.12	571.36	436.00	5.47%	240.25	71.55%	10.07%	46.07%
BHARTIARTL	1940.00	-2.00	-0.10%	25.13	487.53	2045.80	5.17%	1511.00	28.39%	2.88%	17.17%
CIPLA	1568.00	54.90	3.63%	14.95	231.61	1702.05	7.88%	1335.00	17.45%	-1.82%	-7.78%
COALINDIA	384.10	0.75	0.20%	50.61	194.74	502.45	23.55%	349.25	9.98%	-0.96%	-22.06%
DRREDDY	1264.00	17.90	1.44%	16.81	211.80	1405.90	10.09%	1020.00	23.92%	-0.36%	-81.28%
EICHERMOT	6974.00	77.50	1.12%	2.83	196.68	7122.50	2.08%	4508.75	54.68%	1.20%	46.94%
ETERNAL	348.40	2.90	0.84%	159.69	553.39	349.90	0.43%	194.80	78.85%	4.81%	#VALUE!
GRASIM	2812.00	1.40	0.05%	5.83	163.86	2911.00	3.40%	2276.95	23.50%	0.23%	2.64%
HCLTECH	1492.80	6.30	0.42%	21.29	317.36	2012.20	25.81%	1302.75	14.59%	5.95%	-16.93%
HDFCBANK	981.45	4.35	0.45%	137.54	1351.39	1018.85	3.67%	812.15	20.85%	1.15%	-40.82%
HDFCLIFE	748.80	-5.55	-0.74%	27.71	208.23	820.75	8.77%	584.30	28.15%	0.08%	6.23%
HINDALCO	772.80	-1.30	-0.17%	43.65	336.03	790.60	2.25%	546.45	41.42%	4.79%	7.25%
HINDUNILVR	2526.00	8.40	0.33%	10.19	257.09	2825.85	10.61%	2136.00	18.26%	-4.05%	-10.69%
ICICIBANK	1380.40	4.20	0.31%	76.74	1059.10	1500.00	7.97%	1186.00	16.39%	-1.89%	11.29%
INDIGO	5736.00	11.50	0.20%	4.26	244.75	6232.50	7.97%	3780.00	51.75%	0.49%	24.37%
INFY	1511.90	2.60	0.17%	37.37	565.78	2006.45	24.65%	1307.00	15.68%	5.33%	-22.54%
ITC	402.50	2.60	0.65%	150.85	606.85	509.80	21.05%	390.15	3.17%	-1.88%	-21.27%
JIOFIN	308.20	0.85	0.28%	76.47	236.36	348.00	11.44%	198.65	55.15%	-1.21%	-11.07%
JSWSTEEL	1167.80	-7.40	-0.63%	14.58	169.73	1178.80	0.93%	880.00	32.70%	6.70%	17.73%
KOTAKBANK	2146.10	1.50	0.07%	19.36	415.95	2301.90	6.77%	1679.05	27.82%	9.97%	18.92%
LT	3779.00	9.80	0.26%	11.30	427.66	3963.50	4.65%	2965.30	27.44%	6.79%	6.70%
M&M	3454.00	11.10	0.32%	14.16	487.78	3723.80	7.25%	2425.00	42.43%	-6.98%	8.75%
MARUTI	16285.00	300.00	1.88%	4.23	684.12	16435.00	0.91%	10725.00	51.84%	4.76%	27.55%
MAXHEALTH	1155.50	-0.30	-0.03%	27.23	314.37	1314.30	12.08%	888.90	29.99%	0.54%	20.92%
NESTLEIND	1199.00	11.20	0.94%	11.11	132.80	1290.00	7.05%	1055.00	13.65%	0.01%	-53.99%
NTPC	338.80	2.95	0.88%	89.70	305.17	429.90	21.19%	292.80	15.71%	2.80%	-20.22%
ONGC	245.90	2.51	1.03%	90.50	222.81	293.65	16.26%	205.00	19.95%	4.67%	-17.06%
POWERGRID	288.65	2.50	0.87%	107.73	311.69	345.40	16.43%	247.30	16.72%	1.18%	-12.53%
RELIANCE	1380.90	3.10	0.22%	63.73	881.48	1551.00	10.97%	1114.85	23.86%	-0.05%	-50.70%
SBILIFE	1808.10	-1.70	-0.09%	10.98	200.58	1912.00	5.43%	1372.55	31.73%	1.62%	4.73%
SBIN	881.25	19.15	2.22%	137.12	1206.04	883.75	0.28%	680.00	29.60%	6.59%	10.32%
SHRIRAMFIN	665.00	-4.05	-0.61%	24.80	165.06	717.50	7.32%	493.35	34.79%	12.12%	-79.90%
SUNPHARMA	1670.00	11.50	0.69%	14.54	242.39	1947.00	14.23%	1548.00	7.88%	4.90%	-13.49%
TATACONSUM	1125.10	7.10	0.64%	9.82	110.32	1180.50	4.69%	882.90	27.43%	4.08%	-0.09%
TATAMOTORS	679.15	-1.95	-0.29%	160.66	1092.64	948.45	28.39%	535.75	26.77%	-5.34%	-25.95%
TATASTEEL	173.85	-2.57	-1.46%	180.81	314.17	177.82	2.23%	122.62	41.78%	4.50%	10.59%
TCS	3028.00	-33.70	-1.10%	88.17	2673.42	4494.90	32.63%	2866.60	5.63%	1.41%	-28.02%
TECHM	1458.00	-8.60	-0.59%	9.37	136.86	1807.70	19.35%	1209.40	20.56%	0.40%	-9.97%
TITAN	3529.00	-21.60	-0.61%	8.25	292.91	3740.00	5.64%	2925.00	20.65%	-2.94%	1.64%
TRENT	4680.00	19.10	0.41%	7.35	345.65	8345.00	43.92%	4488.00	4.28%	-12.31%	-42.04%
ULTRACEMCO	12275.00	83.00	0.68%	1.98	243.57	13097.00	6.28%	10047.85	22.17%	-3.73%	7.04%
WIPRO	248.98	2.58	1.05%	70.69	176.11	324.60	23.30%	228.00	9.20%	1.60%	-53.24%

## Disclaimer / Disclosures

### ANALYST CERTIFICATION

I, Mrs. Vaishali Parekh B.com, Research Analyst, author and the name subscribed to this report, hereby certify that all of the views expressed in this research report accurately reflect our views about the subject issuer(s) or securities. We also certify that no part of our compensation was, is, or will be directly or indirectly related to the specific recommendation(s) or view(s) in this report.

Terms & conditions and other disclosures:

Prabhudas Lilladher Pvt. Ltd, Mumbai, India (hereinafter referred to as "PL") is engaged in the business of Stock Broking, Portfolio Manager, Depository Participant and distribution for third party financial products. PL is a subsidiary of Prabhudas Lilladher Advisory Services Pvt Ltd. which has its various subsidiaries engaged in business of commodity broking, investment banking, financial services (margin funding) and distribution of third party financial/other products, details in respect of which are available at [www.plindia.com](http://www.plindia.com)

This document has been prepared by the Research Division of PL and is meant for use by the recipient only as information and is not for circulation. This document is not to be reported or copied or made available to others without prior permission of PL. It should not be considered or taken as an offer to sell or a solicitation to buy or sell any security.

The information contained in this report has been obtained from sources that are considered to be reliable. However, PL has not independently verified the accuracy or completeness of the same. Neither PL nor any of its affiliates, its directors or its employees accepts any responsibility of whatsoever nature for the information, statements and opinion given, made available or expressed herein or for any omission therein.

Recipients of this report should be aware that past performance is not necessarily a guide to future performance and value of investments can go down as well. The suitability or otherwise of any investments will depend upon the recipient's particular circumstances and, in case of doubt, advice should be sought from an independent expert/advisor.

Either PL or its affiliates or its directors or its employees or its representatives or its clients or their relatives may have position(s), make market, act as principal or engage in transactions of securities of companies referred to in this report and they may have used the research material prior to publication.

PL may from time to time solicit or perform investment banking or other services for any company mentioned in this document.

PL is registered as Research Analyst under Securities and Exchange Board of India (Research Analysts) Regulations, 2014 PL submits that no material disciplinary action has been taken on us by any Regulatory Authority impacting Equity Research Analysis activities.

PL or its research analysts or its associates or his relatives do not have any financial interest in the subject company.

PL or its research analysts or its associates or his relatives do not have actual/beneficial ownership of one per cent or more securities of the subject company at the end of the month immediately preceding the date of publication of the research report.

PL or its research analysts or its associates or his relatives do not have any material conflict of interest at the time of publication of the research report.

PL or its associates might have received compensation from the subject company in the past twelve months.

PL or its associates might have managed or co-managed public offering of securities for the subject company in the past twelve months or mandated by the subject company for any other assignment in the past twelve months.

PL or its associates might have received any compensation for investment banking or merchant banking or brokerage services from the subject company in the past twelve months.

PL or its associates might have received any compensation for products or services other than investment banking or merchant banking or brokerage services from the subject company in the past twelve months PL or its associates might have received any compensation or other benefits from the subject company or third party in connection with the research report.

PL encourages independence in research report preparation and strives to minimize conflict in preparation of research report. PL or its analysts did not receive any compensation or other benefits from the subject Company or third party in connection with the preparation of the research report. PL or its Research Analysts do not have any material conflict of interest at the time of publication of this report.

It is confirmed that Mrs.Vaishali Parekh B.com, Research Analyst of this report has not received any compensation from the companies mentioned in the report in the preceding twelve months compensation of our Research Analysts is not based on any specific merchant banking, investment banking or brokerage service transactions.

The Research analysts for this report certifies that all of the views expressed in this report accurately reflect his or her personal views about the subject company or companies and its or their securities, and no part of his or her compensation was, is or will be, directly or indirectly related to specific recommendations or views expressed in this report.

The research analysts for this report has not served as an officer, director or employee of the subject company PL or its research analysts have not engaged in market making activity for the subject company

Our sales people, traders, and other professionals or affiliates may provide oral or written market commentary or trading strategies to our clients that reflect opinions that are contrary to the opinions expressed herein, and our proprietary trading and investing businesses may make investment decisions that are inconsistent with the recommendations expressed herein. In reviewing these materials, you should be aware that any or all of the foregoing, among other things, may give rise to real or potential conflicts of interest.

PL and its associates, their directors and employees may (a) from time to time, have a long or short position in, and buy or sell the securities of the subject company or (b) be engaged in any other transaction involving such securities and earn brokerage or other compensation or act as a market maker in the financial instruments of the subject company or act as an advisor or lender/borrower to the subject company or may have any other potential conflict of interests with respect to any recommendation and other related information and opinions.