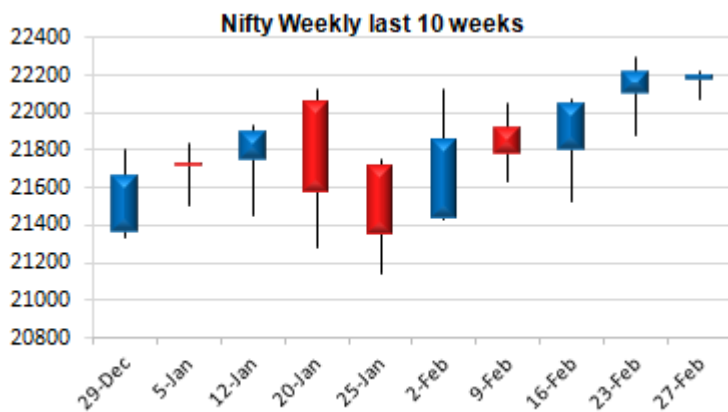
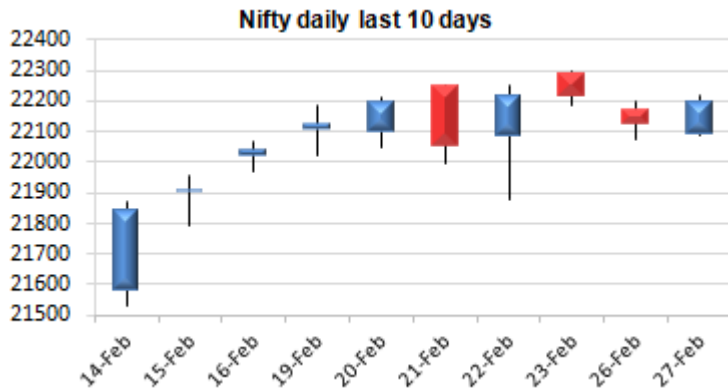


Date: 28 Feb 2024

* Sensex 73098.22 + 305.09

* Nifty 22198.35 + 76.30

* Bank Nifty 46588.05 + 11.55



*Blue candle → Close rate > Open rate * Red candle → Close rate < Open rate

Market Preview

Nifty ends near 22200 zone

Nifty after witnessing a pullback from 22100 zone, improved the bias to end the session near 22200 levels and is anticipated to gain further in the coming sessions. BankNifty closed on a flat note taking support near the 46350 zone and a decisive breach above 47300 level is necessary to improve the trend overall. Sectorwise Realty, IT, Auto and Pharma were among the major gainers while Media, PSU Banks and Financial Services were among the laggards. The market breadth was slightly on the weaker side with the advance decline indicating a ratio of 4:5 at close.

Market Forecast

Nifty daily range 22100-22400

Nifty as on now taking support near the 22100 zone has picked up gradually with some volatility witnessed and ended the session near 22200 zone with bias once again improving and anticipating for further rise in this week. As mentioned earlier, with the overall bias maintained strong, the index is expected to carry on with positive move for next targets of 22400 and 22800 levels anticipated in the coming days. BankNifty took support near 46350 zone during the intraday session and ended on a flat note near 46600 level with near-term support maintained near the 50EMA level of 46200 zone and would need to breach above the 47300 band to trigger for fresh upward move. The support for the day is seen at 22100 level while the resistance would be seen at 22400. BankNifty would have the daily range of 46300-47000 levels.

Daily Trend turned Up

Scrip Name	LCP	Curr Trnd	Reversal
CESE	130.5	-2	129.6
CUB	136	-4	135.5
ICICIGI	1726.75	-7	1654.85
INDUSINDBK	1493.05	-2	1482.8
KEC	697.6	-1	668.8
LUPINLTD	1622.6	-11	1617.1
NAUKRI	5345.45	-1	5318.95
TATAMOTORS	962.7	-6	937.8
TCS	4104.4	-9	4088.75
TORNTPOWER	1151.15	-12	1147.45
VOLTAS	1117.25	-3	1101
ZEETELE	173.05	-4	171.5

* Trends turned Up after a significant period

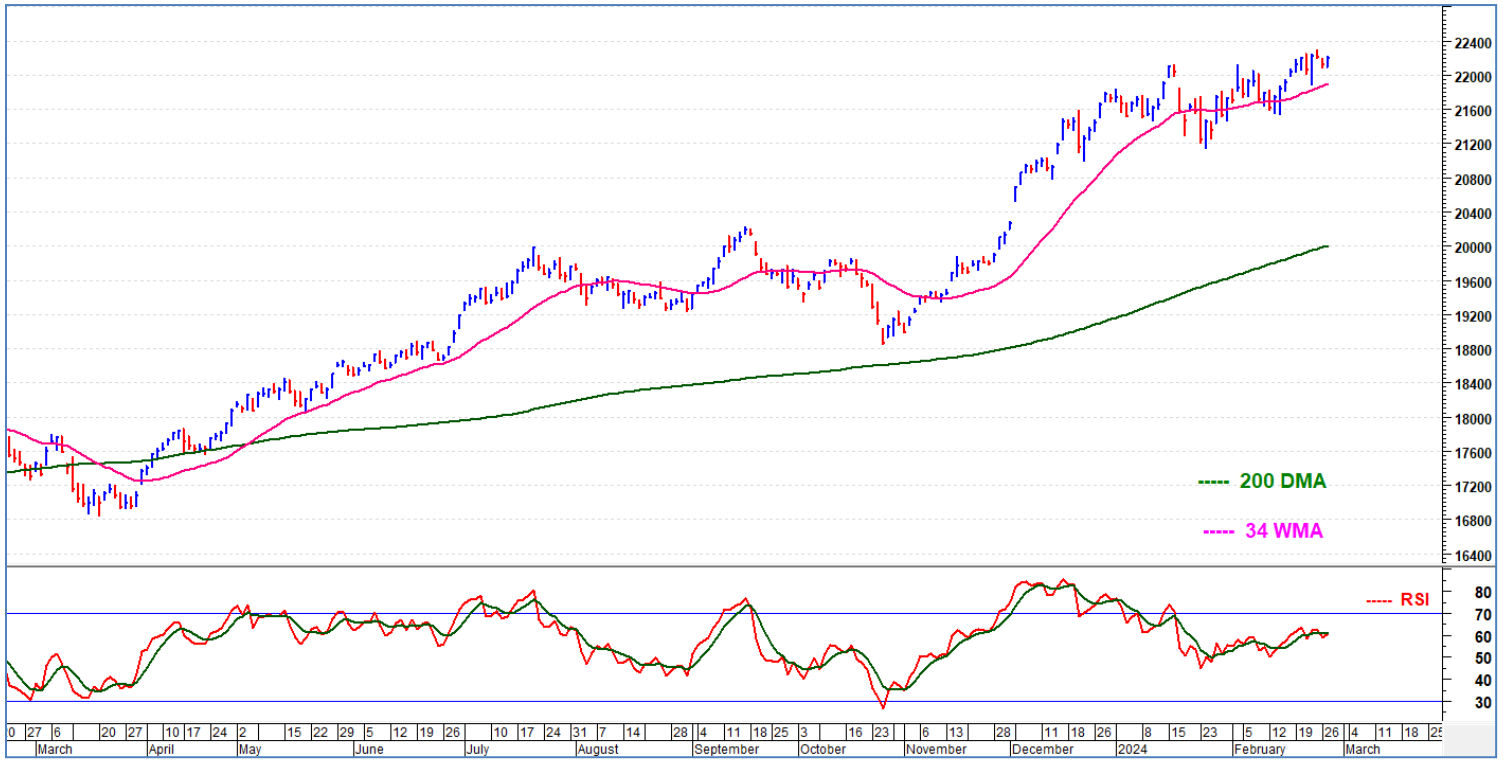
Daily Trend turned Down

Scrip Name	LCP	Curr Trnd	Reversal
AXISBANK	1079.05	10	1086.35
BERGEPAIN	562.9	10	567.1
DIXON	6761.25	10	6869.45
GNFC	666.25	7	668.1
GUJGASLTD	558.3	4	563.25
ICICIPRULI	518.85	6	520.15
M&MFIN	289	6	291
PETRONET	281.35	7	284.7
PIIND	3672.25	19	3689.1
POLYCAB	4766.9	9	4768.4
RAYMOND	1840.4	9	1851.15
TATAELXSI	7640.6	7	7706.9

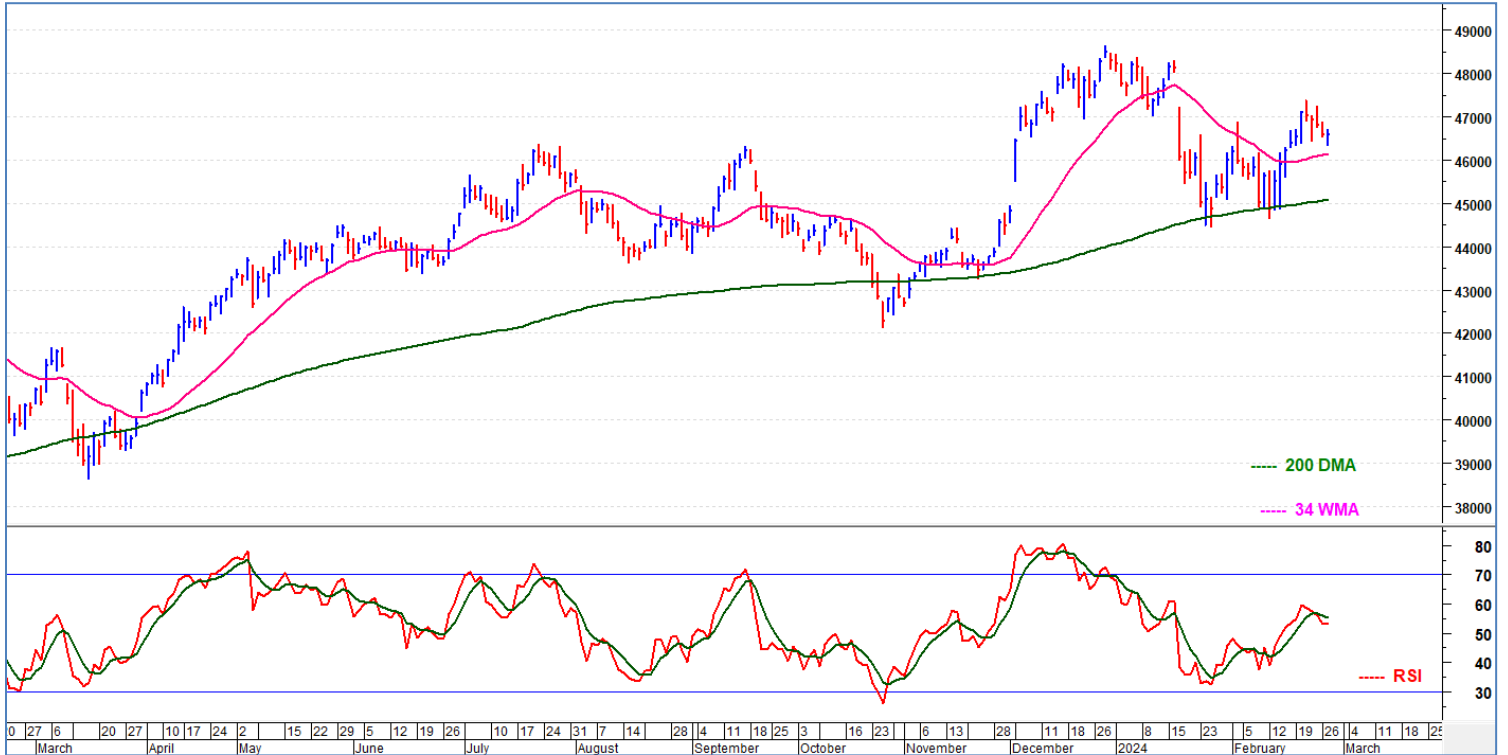
* Trends turned Down after a significant period

Indices	Period	Closing	% Chng	Trend	Reversal	2 Sup	1 Sup	Pivot	1 Res	2 Res
Nifty	Daily	22198.35	0.34%	-2	22216.60	22035	22117	22167	22249	22300
	Weekly	22212.70	0.78%	1	22134.50	21706	21959	22128	22382	22551
	Monthly	21725.70	-0.03%	3	21154.55	20675	21201	21662	22188	22649
Bank Nifty	Daily	46588.05	0.02%	-2	46841.95	46148	46368	46545	46765	46942
	Weekly	46811.75	0.92%	1	46430.50	45785	46299	46831	47344	47877
	Monthly	45996.80	-4.75%	-1	47222.95	42271	44134	46292	48155	50313
Sensex	Daily	73095.22	0.42%	1	73105.20	72471	72783	72972	73284	73473
	Weekly	73142.80	0.99%	1	72897.05	71177	72160	73064	74047	74952
	Monthly	71752.11	-0.68%	3	70393.90	68301	70027	71727	73453	75153

Nifty Daily chart with RSI indicator:

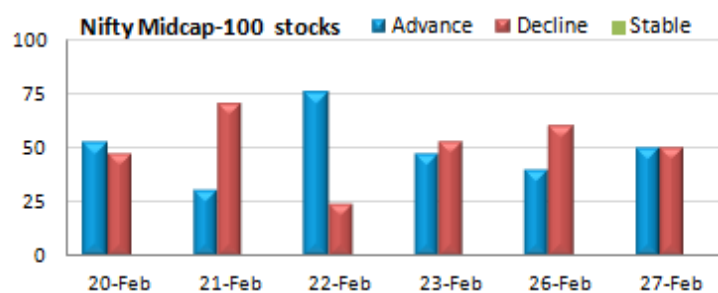
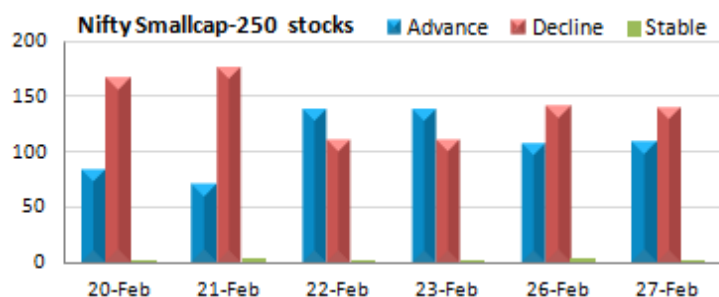


BankNifty Daily chart with RSI indicator:



Gainers - Losers (Nifty 500 stocks)

Gainers				Losers			
Scrip Name	LCP	% Change	Volume	Scrip Name	LCP	% Change	Volume
BEML	3372.75	9.75	2112497	Vodafone Idea	15.85	-5.93	737333872
Intellect Desig	1058.7	7.68	5241912	FDC	456.25	-5.46	577064
Jamna Auto	124.15	7.44	24094411	Godawari Power	735.7	-4.72	453828
KNR Construct	280.9	5.15	3160532	Adani Energy	1122.7	-4.54	3234688
BSE Limited	2396.1	5.14	1204766	Shriram Finance	2372.4	-4.54	4102754
Motilal Oswal	1737.35	4.97	196366	Varun Beverages	1467	-4.51	2480974
ICICI Lombard	1726.75	4.62	3828736	NMDC	225.05	-4.21	20882507



Breakouts - Cross above 200 DMA

Company Name	LCP	Change %	200 DMA
Ester Ind	105.65	5.78	99.88
Uniparts India	605.15	4.42	579.54
Datamatics Glob	616.55	1.85	605.36
SecUR Credentia	20.45	0.25	20.4
Hindustan Aeron	3095.5	0.22	3088.85
ANDHRSUGAR	112.3	0.11	112.18

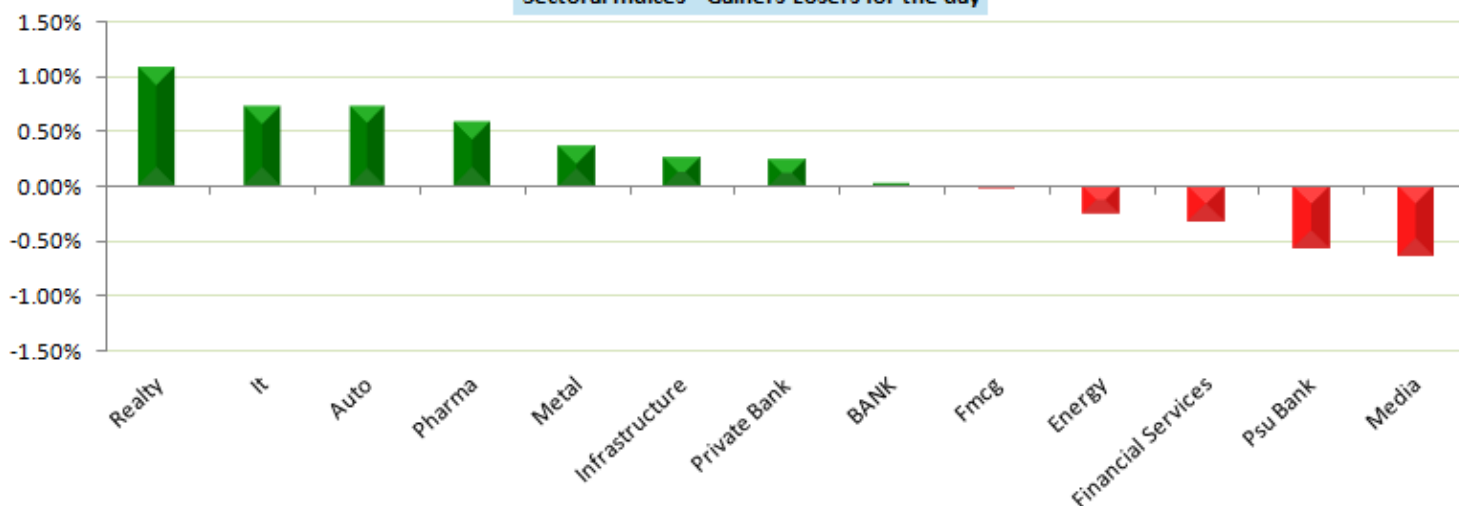
Breakouts - Cross below 200 DMA

Company Name	LCP	Change %	200 DMA
BGR Energy	70.85	-5.04	74.61
Aaron Industrie	252.75	-1.49	256.58
Ugro Capital	264.95	-0.57	266.47
De Nora India	1637.1	-0.57	1646.53
Balaji Amines	2230.7	-0.45	2240.75
Maheshwari Logi	77.45	-0.42	77.78
TTK Prestige	762.5	-0.4	765.59
Harsha Engineer	418.85	-0.37	420.4
Nazara	773.65	-0.2	775.19
Weizmann	107.5	-0.19	107.71
Five-Star Busin	706.6	-0.13	707.51
Mawana Sugars	100.1	-0.09	100.19

* Stocks crossing above its Simple Moving Average (200DMA)

* Stocks crossing below its Simple Moving Average (200DMA)

Sectoral Indices - Gainers Losers for the day



Stocks witnessing a volume surge as compared to their 5 day average volume.

Volume Shockers - NSE					
Company name	LCP	% Chg	Volume	Avg Vol *	% Chg
TT	123.8	15.59	2853477	16768	16918
Umang Dairies	98	19.95	2761578	50222	5399
Uniparts India	605.15	10.89	2686831	68796	3806
CMS Info System	385.75	-2.83	12870072	802620	1504
Jamna Auto	124.15	7.44	24094061	1827189	1219
Avro India	145.75	-4.49	1184657	90984	1202
Mahindra Logist	444.7	9.84	2725930	216583	1159
KN Agri	137.2	2.39	180800	14880	1115
Andhra Cemen	112.25	1.31	331413	28634	1057
Globesecure	65.2	-4.12	74000	6400	1056
Indo-National	718.15	8.4	121259	11254	977
Global Surfaces	302.1	9.1	1173993	122744	856
Tainwala Chem	136.55	-3.57	49725	5250	847
Karnika Industr	230.6	4.99	222400	24000	827
Deep Energy Res	193.3	-6.12	957159	109156	777
DCM Shriram	1004.05	2.79	218018	25289	762
Intellect Desig	1058.7	7.68	5241912	619129	747
Micropro Soft	58.35	14.41	172800	20480	744
Indian Renew	154.9	2.24	154570666	18757323	724
ICICI Lombard	1726.75	4.62	3828736	490177	681

* the Average Volume of last 5 days

Watch out for the stocks that have seen a huge spurt in its share price over the last three days

Price Shockers - NSE				
Company name	LCP	3 days *	% Chg	Volume
Moksh Ornaments	28.25	21.3	32.63	9448152
Dhruv Consultan	101	84.55	19.46	883005
Kellton Tech	118.45	99.8	18.69	17038467
Umang Dairies	98	82.7	18.5	2761578
AksharChem	357.15	303.1	17.83	834743
TT	123.8	105.1	17.79	2853477
AVG Logistics	614.5	523.75	17.33	1138457
MCON Rasayan	153	131.65	16.22	17000
Ganesh Housing	883.5	761.05	16.09	865436
Megatherm	380.2	328.4	15.77	321600
Avro India	145.75	127.2	14.58	1184657
Mahindra Logist	444.7	391.9	13.47	2725930
Deep Energy Res	193.3	171.6	12.65	957159
Tarmat	148.35	131.8	12.56	1883456
ORIENT CERATECH	70.2	62.75	11.87	2316865
Paisalo Digital	168.4	151.4	11.23	4462037
BEML	3372.75	3033	11.2	2112503
Intellect Desig	1058.7	952.8	11.11	5241912
Sobha	1621.6	1460.2	11.05	756969
PB Fintech	1135.45	1024.95	10.78	2330957

* the % price rise of the last 3 days

Nifty 50 stocks - Summary Details

Symbol	LTP	Chng	% Chng	Volume (lacs)	Turnover (crs.)	52w High	Diff with 52w H	52w Low	Diff with 52w L	365 days % chng	30 days % chng
NIFTY 50	22198.35	76.30	0.34%	2521.99	24620.56	22297.50	0.44%	16828.35	31.91%	3.60%	26.66%
ADANIANT	3296.00	-31.75	-0.95%	11.26	372.12	3344.00	1.44%	1103.75	198.62%	15.00%	152.94%
ADANIPTS	1332.45	-5.70	-0.43%	21.97	291.74	1343.00	0.79%	551.95	141.41%	16.74%	139.43%
APOLLOHOSP	6617.00	33.00	0.50%	3.14	207.83	6874.45	3.75%	4168.00	58.76%	6.73%	47.27%
ASIANPAINT	2859.60	-8.85	-0.31%	12.96	370.68	3568.00	19.85%	2708.65	5.57%	-2.74%	4.75%
AXISBANK	1080.40	-4.80	-0.44%	65.47	707.04	1151.85	6.20%	814.30	32.68%	4.12%	27.46%
BAJAJ-AUTO	8465.00	17.00	0.20%	3.92	331.59	8650.00	2.14%	3625.60	133.48%	11.19%	119.43%
BAJAJFINSV	1595.00	-19.30	-1.20%	9.31	149.87	1741.00	8.39%	1215.00	31.28%	-0.97%	18.79%
BAJFINANCE	6555.40	-87.85	-1.32%	11.50	756.27	8192.00	19.98%	5485.70	19.50%	-6.24%	6.53%
BHARTIARTL	1123.30	13.25	1.19%	71.49	800.21	1200.65	6.44%	735.80	52.66%	-4.35%	46.62%
BPCL	623.15	-4.00	-0.64%	74.41	464.70	687.95	9.42%	314.05	98.42%	32.20%	97.50%
BRITANNIA	4907.00	5.10	0.10%	4.34	213.07	5386.05	8.89%	4153.00	18.16%	-4.67%	10.34%
CIPLA	1490.55	20.70	1.41%	12.31	182.46	1491.00	0.03%	852.00	74.95%	7.32%	52.82%
COALINDIA	441.10	-1.20	-0.27%	83.44	367.47	487.60	9.54%	207.60	112.48%	13.59%	103.78%
DIVISLAB	3540.00	-37.35	-1.04%	5.25	186.22	4074.40	13.12%	2730.00	29.67%	-0.04%	22.71%
DRREDDY	6443.45	2.70	0.04%	1.93	124.27	6494.05	0.78%	4297.00	49.95%	9.99%	43.41%
EICHERMOT	4002.00	49.05	1.24%	5.79	231.25	4200.00	4.71%	2836.00	41.11%	9.30%	23.31%
GRASIM	2207.80	20.90	0.96%	6.75	148.57	2244.00	1.61%	1527.05	44.58%	5.32%	38.83%
HCLTECH	1659.25	9.45	0.57%	20.49	340.74	1697.35	2.24%	1016.25	63.27%	6.42%	50.69%
HDFCBANK	1421.90	-0.40	-0.03%	160.44	2278.11	1757.50	19.10%	1363.55	4.28%	-0.88%	-10.49%
HDFCLIFE	582.00	5.65	0.98%	63.21	369.28	710.60	18.10%	457.80	27.13%	-0.46%	19.36%
HEROMOTOCO	4420.10	-76.00	-1.69%	8.30	368.96	4949.05	10.69%	2246.00	96.80%	1.21%	80.88%
HINDALCO	510.00	4.95	0.98%	67.41	341.97	620.50	17.81%	381.00	33.86%	-10.96%	21.63%
HINDUNILVR	2407.45	3.20	0.13%	11.20	268.88	2769.65	13.08%	2346.75	2.59%	-0.99%	-3.22%
ICICIBANK	1061.50	7.30	0.69%	105.81	1118.59	1070.00	0.79%	810.30	31.00%	4.38%	25.54%
INDUSINDBK	1492.00	25.50	1.74%	28.43	419.49	1694.50	11.95%	990.20	50.68%	-3.01%	35.89%
INFY	1664.50	4.35	0.26%	51.59	856.86	1733.00	3.95%	1185.30	40.43%	-0.54%	7.06%
ITC	410.70	1.50	0.37%	77.84	319.76	499.70	17.81%	369.65	11.11%	-10.19%	6.26%
JSWSTEEL	818.50	9.75	1.21%	13.31	108.63	895.75	8.62%	649.05	26.11%	-0.85%	18.07%
KOTAKBANK	1708.20	1.90	0.11%	44.32	755.97	2064.40	17.25%	1643.50	3.94%	-3.51%	0.53%
LT	3496.50	26.35	0.76%	21.22	741.23	3737.90	6.46%	2082.10	67.93%	-3.43%	62.61%
LTIM	5435.00	-31.15	-0.57%	3.22	175.15	6442.00	15.63%	4132.20	31.53%	-0.52%	12.62%
M&M	1945.00	15.20	0.79%	28.21	544.37	1956.95	0.61%	1123.40	73.14%	17.99%	50.74%
MARUTI	11456.15	-10.85	-0.09%	3.08	352.98	11720.00	2.25%	8130.00	40.91%	16.05%	32.41%
NESTLEIND	2600.45	16.55	0.64%	6.31	163.23	2769.30	6.10%	1788.00	45.44%	4.10%	-86.17%
NTPC	336.05	-1.55	-0.46%	88.83	298.63	348.05	3.45%	166.80	101.47%	7.26%	97.43%
ONGC	269.75	-0.10	-0.04%	195.83	524.49	281.15	4.05%	146.50	84.13%	15.30%	74.10%
POWERGRID	293.00	5.20	1.81%	365.10	1062.99	293.40	0.14%	160.92	82.08%	17.23%	33.83%
RELIANCE	2971.00	-3.65	-0.12%	54.13	1610.04	2999.90	0.96%	2180.00	36.28%	9.92%	24.79%
SBILIFE	1542.45	-6.70	-0.43%	17.65	274.25	1569.00	1.69%	1054.00	46.34%	12.18%	38.06%
SBIN	749.50	-9.40	-1.24%	139.69	1050.05	777.50	3.60%	501.55	49.44%	23.85%	45.65%
SUNPHARMA	1579.55	22.60	1.45%	21.41	336.82	1585.45	0.37%	922.45	71.23%	13.79%	60.43%
TATACONSUM	1181.00	3.90	0.33%	15.85	187.50	1190.95	0.84%	686.60	72.01%	3.55%	64.37%
TATAMOTORS	962.55	25.60	2.73%	128.10	1220.68	965.00	0.25%	400.45	140.37%	15.41%	119.04%
TATASTEEL	144.20	1.55	1.09%	241.19	345.97	147.40	2.17%	101.55	42.00%	6.65%	29.98%
TCS	4100.50	99.45	2.49%	29.60	1208.90	4184.75	2.01%	3070.25	33.56%	5.01%	17.66%
TECHM	1293.25	-5.00	-0.39%	14.89	192.84	1416.30	8.69%	981.05	31.82%	-1.80%	16.02%
TITAN	3659.00	36.50	1.01%	6.74	246.20	3886.95	5.86%	2321.00	57.65%	-3.92%	50.99%
ULTRACEMCO	9919.00	-11.05	-0.11%	2.14	213.24	10526.00	5.77%	6991.00	41.88%	-0.39%	37.60%
UPL	484.90	-4.25	-0.87%	29.20	141.58	759.95	36.19%	452.15	7.24%	-8.96%	-33.75%
WIPRO	531.10	-1.80	-0.34%	52.00	276.82	545.90	2.71%	352.00	50.88%	13.38%	35.49%

Note: 52 week high & 52 week low prices are adjusted for Bonus, Split & Rights Corporate actions.

Color code for Stocks closer to 52-week high :

	- within 0% and 2%
	- within 2% and 5%
	- within 5% and 7%

Color code for Stocks closer to 52-week low :

	- within 0% and 2%
	- within 2% and 5%
	- within 5% and 7%

365 days % Change and 30 days % Change value are adjusted With respect to corporate actions

Disclaimer / Disclosures:

ANALYST CERTIFICATION

I, Mrs. Vaishali Parekh B.com, Research Analyst, author and the name subscribed to this report, hereby certify that all of the views expressed in this research report accurately reflect our views about the subject issuer(s) or securities. We also certify that no part of our compensation was, is, or will be directly or indirectly related to the specific recommendation(s) or view(s) in this report.

Terms & conditions and other disclosures:

Prabhudas Lilladher Pvt. Ltd, Mumbai, India (hereinafter referred to as "PL") is engaged in the business of Stock Broking, Portfolio Manager, Depository Participant and distribution for third party financial products. PL is a subsidiary of Prabhudas Lilladher Advisory Services Pvt Ltd. which has its various subsidiaries engaged in business of commodity broking, investment banking, financial services (margin funding) and distribution of third party financial/other products, details in respect of which are available at www.plindia.com

This document has been prepared by the Research Division of PL and is meant for use by the recipient only as information and is not for circulation. This document is not to be reported or copied or made available to others without prior permission of PL. It should not be considered or taken as an offer to sell or a solicitation to buy or sell any security.

The information contained in this report has been obtained from sources that are considered to be reliable. However, PL has not independently verified the accuracy or completeness of the same. Neither PL nor any of its affiliates, its directors or its employees accepts any responsibility of whatsoever nature for the information, statements and opinion given, made available or expressed herein or for any omission therein.

Recipients of this report should be aware that past performance is not necessarily a guide to future performance and value of investments can go down as well. The suitability or otherwise of any investments will depend upon the recipient's particular circumstances and, in case of doubt, advice should be sought from an independent expert/advisor.

Either PL or its affiliates or its directors or its employees or its representatives or its clients or their relatives may have position(s), make market, act as principal or engage in transactions of securities of companies referred to in this report and they may have used the research material prior to publication.

PL may from time to time solicit or perform investment banking or other services for any company mentioned in this document.

PL is registered as Research Analyst under Securities and Exchange Board of India (Research Analysts) Regulations, 2014 PL submits that no material disciplinary action has been taken on us by any Regulatory Authority impacting Equity Research Analysis activities.

PL or its research analysts or its associates or his relatives do not have any financial interest in the subject company.

PL or its research analysts or its associates or his relatives do not have actual/beneficial ownership of one per cent or more securities of the subject company at the end of the month immediately preceding the date of publication of the research report.

PL or its research analysts or its associates or his relatives do not have any material conflict of interest at the time of publication of the research report.

PL or its associates might have received compensation from the subject company in the past twelve months.

PL or its associates might have managed or co-managed public offering of securities for the subject company in the past twelve months or mandated by the subject company for any other assignment in the past twelve months.

PL or its associates might have received any compensation for investment banking or merchant banking or brokerage services from the subject company in the past twelve months.

PL or its associates might have received any compensation for products or services other than investment banking or merchant banking or brokerage services from the subject company in the past twelve months PL or its associates might have received any compensation or other benefits from the subject company or third party in connection with the research report.

PL encourages independence in research report preparation and strives to minimize conflict in preparation of research report. PL or its analysts did not receive any compensation or other benefits from the subject Company or third party in connection with the preparation of the research report. PL or its Research Analysts do not have any material conflict of interest at the time of publication of this report.

It is confirmed that Mrs. Vaishali Parekh B.com, Research Analyst of this report has not received any compensation from the companies mentioned in the report in the preceding twelve months compensation of our Research Analysts is not based on any specific merchant banking, investment banking or brokerage service transactions.

The Research analysts for this report certifies that all of the views expressed in this report accurately reflect his or her personal views about the subject company or companies and its or their securities, and no part of his or her compensation was, is or will be, directly or indirectly related to specific recommendations or views expressed in this report.

The research analysts for this report has not served as an officer, director or employee of the subject company PL or its research analysts have not engaged in market making activity for the subject company

Our sales people, traders, and other professionals or affiliates may provide oral or written market commentary or trading strategies to our clients that reflect opinions that are contrary to the opinions expressed herein, and our proprietary trading and investing businesses may make investment decisions that are inconsistent with the recommendations expressed herein. In reviewing these materials, you should be aware that any or all of the foregoing, among other things, may give rise to real or potential conflicts of interest.

PL and its associates, their directors and employees may (a) from time to time, have a long or short position in, and buy or sell the securities of the subject company or (b) be engaged in any other transaction involving such securities and earn brokerage or other compensation or act as a market maker in the financial instruments of the subject company or act as an advisor or lender/borrower to the subject company or may have any other potential conflict of interests with respect to any recommendation and other related information and opinions.