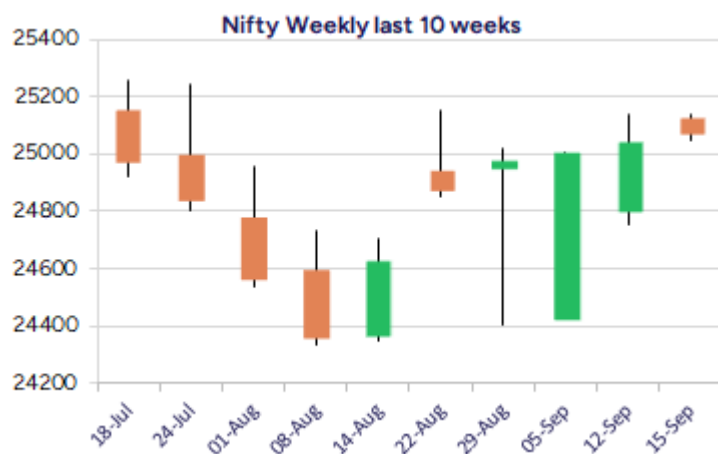
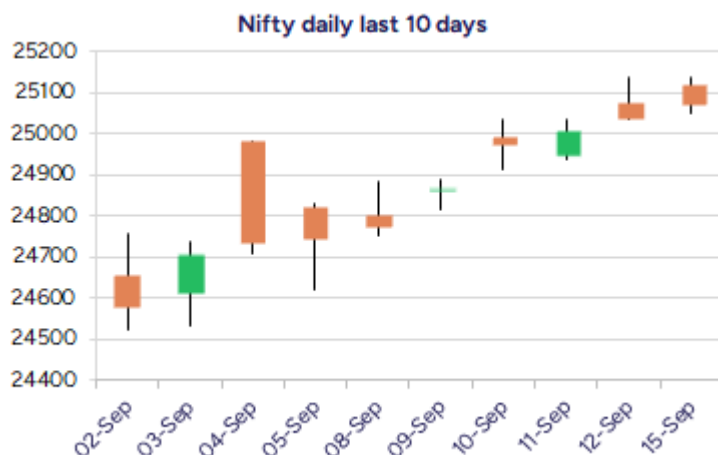


Date: 16<sup>th</sup> Sep 2025

\* Sensex 81785.74 -118.96

\* Nifty 25069.20 -44.80

\* Bank Nifty 54887.85 +78.85



\*Blue candle → Close rate > Open rate \* Red candle → Close rate < Open rate

## Market Preview

### Nifty consolidates near 25100 zone

Nifty halted the ongoing upward move resisting near the 25150 level and consolidating for rest part of the session with bias maintained positive. BankNifty continuing with the sluggish move, slowly and steadily is rising, but would need a conviction and clear directional move in the coming days. The market breadth was overall flat slightly shifted toward the positive side with the advance decline almost showing a neutral ratio at close.

## Market Forecast

### Nifty daily range 24900 - 25300

Nifty, finally ended the long winning streak finding resistance near the 25150 zone and with a very narrow rangebound movement closed marginally in the red near the 25100 zone. The overall bias is maintained and as mentioned earlier, the index would need a decisive breach above the 25250-25300 zone to establish conviction and thereafter, can trigger for a breakout to anticipate for further fresh upward move. From current level, the 50EMA at 24800 zone would be positioned as the near-term important support which needs to be sustained as of now.

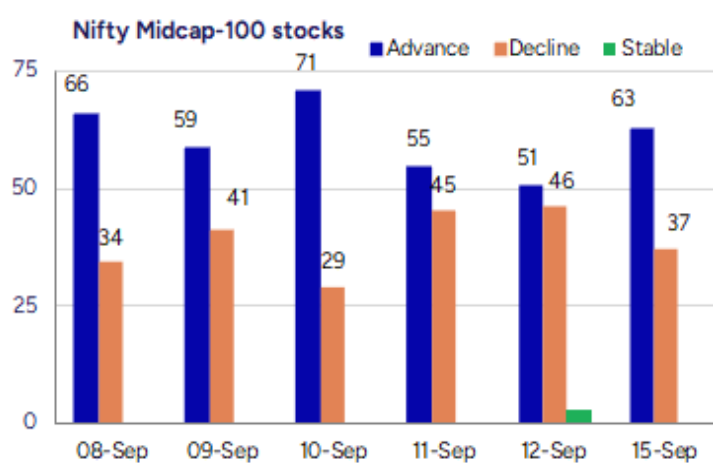
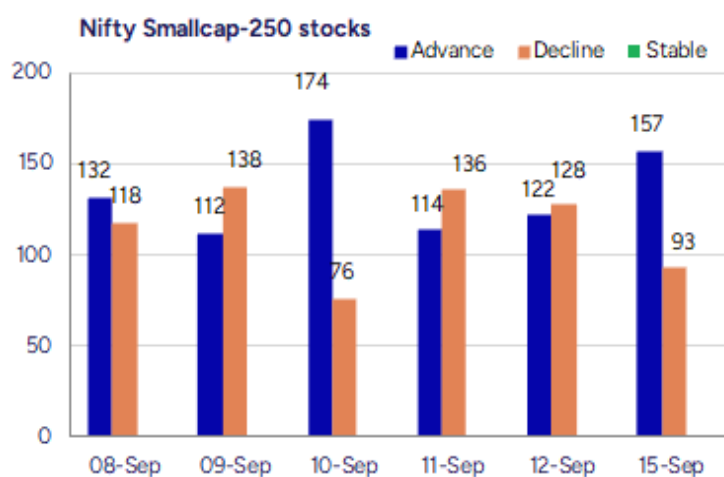
BankNifty, continue to witness a sluggish and narrow rangebound session overall indicating a gradual rise in the last few sessions but lacking conviction and a clear directional move. As we have been mentioning, the index would need a decisive move past the 50EMA at 55200 zone to overall improve the bias and thereafter, establishing conviction anticipating for fresh upward move in the coming days with 53600 level maintained as the important support zone which needs to be sustained.

The support for the day is seen at 24900 levels, while the resistance is seen at 25300 levels. BankNifty would have the daily range of 54500-55600 levels.

Indices	Period	Closing	% Chng	Trend	Reversal	2 Sup	1 Sup	Pivot	1 Res	2 Res
Nifty	Daily	25069.20	-0.18%	9	24985.60	24996	25032	25085	25122	25175
	Weekly	25114.00	1.51%	2	24761.30	24615	24864	25002	25252	25389
	Monthly	24426.85	-1.38%	-1	24777.20	23826	24126	24639	24939	25452
Bank Nifty	Daily	54887.85	0.14%	9	54451.65	54693	54791	54905	55002	55116
	Weekly	54809.30	1.28%	-10	54851.95	53796	54303	54577	55084	55359
	Monthly	53655.65	-4.12%	-1	56293.50	51929	52792	54474	55337	57019
Sensex	Daily	81785.74	-0.15%	9	81460.15	81589	81687	81843	81941	82097
	Weekly	81904.70	1.48%	1	80839.90	80288	81096	81545	82353	82801
	Monthly	79809.65	-1.69%	-2	81431.75	78110	78960	80593	81443	83075

**Gainers - Losers ( Nifty 500 Stocks )**

Gainers				Losers			
Company Name	Last Price	% Gain	Volume	Company Name	Last Price	% Loss	Volume
DC Infotech	287.28	20	353603	Giriraj Civil D	279.9	-10	33000
Nagreeka Export	36.37	19.99	1082181	KRBL	400.85	-9.74	9520464
Digispice Tech	31.23	19.98	1033598	Sunrest	45	-8.35	11200
Shree Pushkar	390	17.66	4078586	TSC India	63	-7.28	38000
Classic Electro	105.15	16.96	640000	Swelect Energy	845.1	-6.83	131401
Ashapura Logist	85	15.88	85000	LE Travenues Te	288.25	-6.67	4463710
Banco Products	700.45	13.32	7239822	Gem Aromatics	272.45	-6.05	900738



## Nifty Daily chart with RSI indicator



## BankNifty Daily chart with RSI indicator



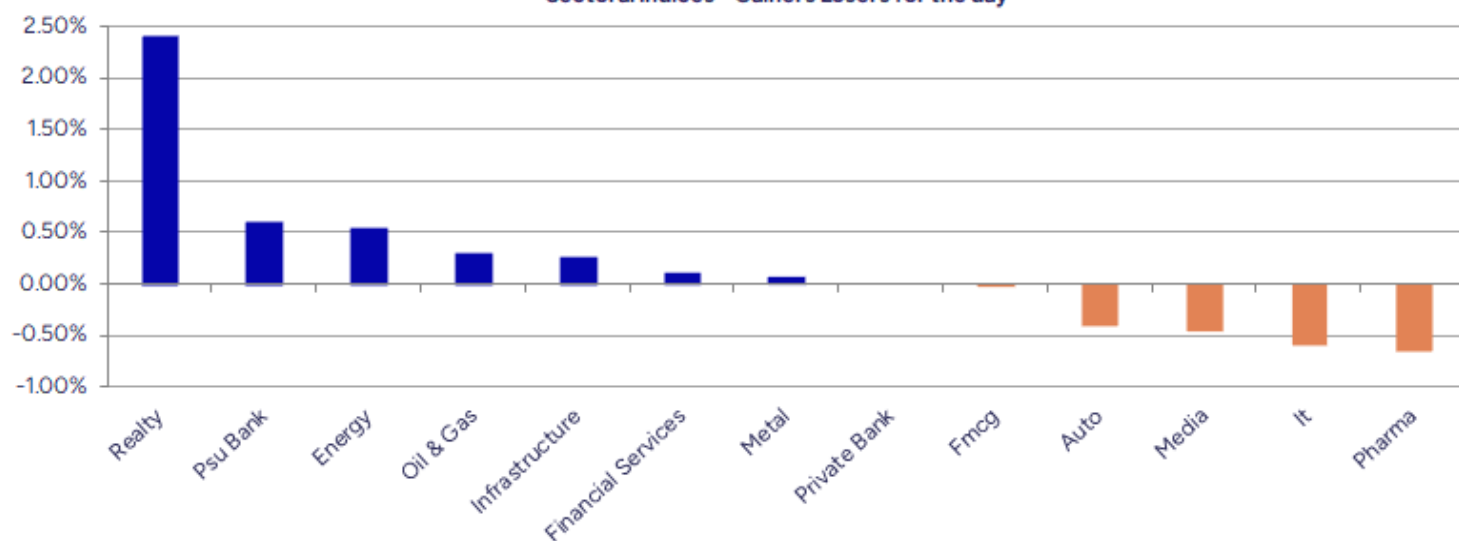
Breakouts - Cross above 200 DMA			
Company Name	LCP	Change %	200 DMA
Ashapura Logist	85	8.70	78.2
JHS Svendgaard	40.7	7.30	37.93
Piramal Enter	1135.5	4.68	1084.73
Mold Tek Tech	167.1	4.31	160.19
IFCI	56.22	3.75	54.19
MMP Industries	288	3.52	278.21
CESC	166.55	2.95	161.77
Sarla Performan	103.25	2.49	100.74
KPR Mill	1050	2.46	1024.84
Loyal Textiles	304.5	2.36	297.47
HUDCO	223.92	2.10	219.32
MMTC	66.5	2.09	65.14
Sigachi Ind	44.29	1.96	43.44
Cello World	635.85	1.92	623.86
DLF	774.65	1.85	760.58
Fiberweb India	48.88	1.85	47.99
Tata Comm	1667.5	1.72	1639.36
Anant Raj	598.4	1.59	589.03

\* Stocks crossing above its Simple Moving Average (200DMA)

Breakdown - Cross below 200 DMA			
Company Name	LCP	Change %	200 DMA
Precision Camsh	219.43	-3.09	226.42
Aditya Ultra	37.5	-2.95	38.64
Walchandnagar	206.6	-2.79	212.53
Agni Green	28.1	-2.57	28.84
Pearl Polymers	31.11	-2.48	31.9
Greenlam Ind	247.4	-1.91	252.22
Electrotherm	982.65	-1.81	1000.77
Veranda Learnin	221.32	-1.79	225.36
SKP Bearing	227	-1.61	230.72
JB Chemicals	1677.1	-1.13	1696.23
Namo Ewaste Man	171.55	-1.00	173.29
Hitech Corp	201.02	-0.79	202.62
Xpro India	1223.8	-0.71	1232.52
Alicon Castallo	865.85	-0.69	871.89
Whirlpool	1338.2	-0.69	1347.46
ICE Make Refrig	787.5	-0.60	792.23
Happy Forgings	921.3	-0.58	926.71
Gillanders Arbu	118.75	-0.57	119.43

\* Stocks crossing below its Simple Moving Average (200DMA)

Sectoral Indices - Gainers Losers for the day



Stocks witnessing a volume surge as compared to their 5 day average volume

Watch out for the stocks that have seen a huge spurt in its share price over the last three days

Volume Shockers - NSE					
Company name	LCP	% Chg	Volume	Avg Vol *	% Chg
Sigachi Ind	44.09	<b>2.85</b>	146186216	1046438	13870
Shree Pushkar	388.7	<b>17.27</b>	3920954	65397	5896
Cool Caps	96.65	<b>1.2</b>	382500	8400	4454
Shree Rama News	33.59	<b>8.25</b>	846654	23129	3561
Tega Industries	2054.1	<b>1.88</b>	799204	24591	3150
Banco Products	696.15	<b>12.63</b>	6594927	211404	3020
Anant Raj	597.2	<b>11.98</b>	22760832	830062	2642
TVS Electronics	459.35	<b>7.84</b>	246596	11673	2013
Emkay Global	248.5	<b>13.04</b>	169696	9346	1716
Chemplast	449.6	<b>4.66</b>	622603	38538	1516
Godawari Power	269.65	<b>10.48</b>	31142361	1933320	1511
Bharat Road Net	22.71	<b>10.35</b>	865959	55249	1467
Aegis Logistics	758.95	<b>8.07</b>	3526535	233519	1410
Veedol Corp	1956.8	<b>9.53</b>	615075	41196	1393
DC Infotech	287.28	<b>20</b>	352932	25809	1267
Giriraj Civil D	280	<b>-9.97</b>	32000	2400	1233
Radiowalla Netw	60.45	<b>-0.9</b>	32000	2560	1150
Themis Medicare	130.6	<b>6.94</b>	2885390	242018	1092
KRBL	400.7	<b>-9.77</b>	7975985	675565	1081
Gokul Agro	393.8	<b>8.84</b>	4021601	361774	1012

\* the Average Volume of last 5 days

Price Shockers - NSE				
Company name	LCP	Prv Close	% Chg	Volume
Divine Power	250.1	159.55	<b>56.75</b>	678000
Nagreeka Export	36.37	25.77	<b>41.13</b>	1180883
CCCL	24.88	18.86	<b>31.92</b>	21434683
Themis Medicare	131.9	100.6	<b>31.11</b>	3163696
MSP Steel	40.43	32.52	<b>24.32</b>	6445781
Studio LSD	25.15	21.1	<b>19.19</b>	1076000
Shree Pushkar	397.7	337.25	<b>17.92</b>	4825457
Digispice Tech	31.23	26.59	<b>17.45</b>	1051608
Rushil Decor	31.06	26.46	<b>17.38</b>	2817106
JBM Auto	738.9	631.35	<b>17.03</b>	23271403
DC Infotech	287.28	246.21	<b>16.68</b>	354014
NK Industries	79.4	68.11	<b>16.58</b>	19833
Veedol Corp	1954.2	1676.9	<b>16.54</b>	714414
Gokul Agro	395.85	339.85	<b>16.48</b>	4473632
Sejal Glass	679.8	587.3	<b>15.75</b>	8491
TIL	354.25	306.05	<b>15.75</b>	23799
Bafna Pharma	122.96	106.23	<b>15.75</b>	20918
Jainik Power	138.95	120.05	<b>15.74</b>	28800
HMT	66.06	57.08	<b>15.73</b>	12456
Osia Hyper Reta	29.87	25.81	<b>15.73</b>	338157

\* the % price rise of the last 3 days



Nifty 50 stocks - Summary Details											
Symbol	LTP	Chng	% Chng	Volume (lacs)	Turnover (crs.)	52w High	Diff with 52w H	52w Low	Diff with 52w L	365 days % chng	30 days % chng
NIFTY 50	25069.20	-44.80	-0.18%	1853.55	17114.08	26277.35	4.60%	21743.65	15.29%	1.96%	-0.96%
ADANIENT	2381.00	-11.00	-0.46%	2.98	71.23	3211.00	25.85%	2025.00	17.58%	4.84%	-19.42%
ADANIPTS	1397.00	3.90	0.28%	12.55	175.58	1494.00	6.49%	995.65	40.31%	7.14%	-4.06%
APOLLOHOSP	7821.50	-53.00	-0.67%	2.15	168.17	7980.00	1.99%	6001.00	30.34%	0.68%	12.19%
ASIANPAINT	2504.90	-41.40	-1.63%	5.83	146.31	3394.90	26.22%	2124.75	17.89%	0.70%	-24.17%
AXISBANK	1105.20	-0.10	-0.01%	38.82	429.05	1281.65	13.77%	933.50	18.39%	3.47%	-9.21%
BAJAJ-AUTO	9030.50	31.00	0.34%	3.26	293.39	12774.00	29.31%	7089.35	27.38%	9.57%	-23.32%
BAJAJFINSV	2080.80	-0.70	-0.03%	10.15	211.52	2135.00	2.54%	1551.65	34.10%	8.12%	9.87%
BAJFINANCE	1011.70	8.45	0.84%	99.90	1013.55	1025.70	1.36%	645.10	56.83%	16.46%	-86.80%
BEL	398.10	-1.20	-0.30%	184.84	736.91	436.00	8.69%	240.25	65.70%	3.74%	37.71%
BHARTIARTL	1907.40	4.80	0.25%	35.53	676.60	2045.80	6.77%	1511.00	26.23%	1.54%	16.41%
CIPLA	1547.00	-27.60	-1.75%	7.59	118.15	1702.05	9.11%	1335.00	15.88%	0.68%	-5.13%
COALINDIA	394.95	0.60	0.15%	46.18	183.39	517.85	23.73%	349.25	13.09%	2.58%	-19.56%
DRREDDY	1301.00	-15.70	-1.19%	13.31	172.86	1405.90	7.46%	1020.00	27.55%	4.47%	-80.23%
EICHERMOT	6799.00	-76.00	-1.11%	3.81	259.50	6937.00	1.99%	4508.75	50.80%	19.27%	41.51%
GRASIM	2801.50	-0.50	-0.02%	2.92	81.81	2898.40	3.34%	2276.95	23.04%	1.34%	0.63%
HCLTECH	1465.40	-1.80	-0.12%	17.26	252.13	2012.20	27.17%	1302.75	12.49%	-1.52%	-19.06%
HDFCBANK	966.10	-1.20	-0.12%	144.85	1402.96	1018.85	5.18%	806.50	19.79%	-51.42%	-41.94%
HDFCLIFE	776.05	-3.60	-0.46%	13.63	105.86	820.75	5.45%	584.30	32.82%	-1.15%	10.53%
HEROMOTOCO	5292.00	-9.50	-0.18%	5.89	312.06	6246.25	15.28%	3344.00	58.25%	12.60%	-8.53%
HINDALCO	754.50	-3.55	-0.47%	25.55	193.41	772.65	2.35%	546.45	38.07%	9.03%	12.60%
HINDUNILVR	2580.00	-0.50	-0.02%	7.53	194.42	3035.00	14.99%	2136.00	20.79%	4.03%	-12.02%
ICICIBANK	1418.00	0.30	0.02%	58.46	831.22	1500.00	5.47%	1186.00	19.56%	-0.67%	13.38%
INDUSINDBK	739.80	-0.70	-0.09%	14.99	111.05	1498.00	50.61%	606.00	22.08%	-3.80%	-49.42%
INFY	1508.50	-17.10	-1.12%	61.67	931.05	2006.45	24.82%	1307.00	15.42%	5.38%	-21.53%
ITC	412.80	-0.95	-0.23%	57.06	235.69	528.50	21.89%	390.15	5.81%	0.56%	-19.48%
JIOFIN	315.50	4.30	1.38%	144.13	452.05	363.00	13.09%	198.65	58.82%	-4.95%	-11.57%
JSWSTEEL	1100.90	1.90	0.17%	5.66	62.23	1115.50	1.31%	880.00	25.10%	5.12%	15.13%
KOTAKBANK	1970.00	-2.30	-0.12%	26.19	516.46	2301.90	14.42%	1679.05	17.33%	-0.30%	8.35%
LT	3588.60	8.80	0.25%	11.77	423.07	3963.50	9.46%	2965.30	21.02%	-2.64%	-0.92%
M&M	3530.30	-59.60	-1.66%	25.50	904.08	3723.80	5.20%	2425.00	45.58%	9.94%	31.06%
MARUTI	15277.00	-48.00	-0.31%	1.71	260.91	15384.00	0.70%	10725.00	42.44%	18.47%	24.43%
NESTLEIND	1211.50	-6.10	-0.50%	5.23	63.50	1389.00	12.78%	1055.00	14.83%	11.77%	-51.90%
NTPC	331.80	0.10	0.03%	65.67	217.87	448.45	26.01%	292.80	13.32%	-2.25%	-17.36%
ONGC	232.48	-0.77	-0.33%	61.53	143.07	302.00	23.02%	205.00	13.40%	-1.56%	-19.97%
POWERGRID	286.65	-1.00	-0.35%	54.21	155.41	366.25	21.73%	247.30	15.91%	-0.36%	-14.71%
RELIANCE	1399.30	4.30	0.31%	53.95	753.10	1551.00	9.78%	1114.85	25.51%	1.54%	-52.64%
SBILIFE	1820.00	-10.20	-0.56%	4.85	88.43	1927.95	5.60%	1372.55	32.60%	-0.57%	-0.88%
SBIN	824.00	0.45	0.05%	38.52	317.72	875.45	5.88%	680.00	21.18%	-0.36%	4.13%
SHRIRAMFIN	625.15	-7.70	-1.22%	36.43	227.51	730.45	14.42%	493.35	26.72%	2.66%	-81.21%
SUNPHARMA	1601.50	-15.10	-0.93%	20.06	322.18	1960.35	18.31%	1553.05	3.12%	-1.51%	-12.79%
TATACONSUM	1100.70	-3.20	-0.29%	14.92	164.14	1234.30	10.82%	882.90	24.67%	5.01%	-8.79%
TATAMOTORS	713.05	-2.20	-0.31%	60.07	429.48	1006.00	29.12%	535.75	33.09%	7.62%	-27.91%
TATASTEEL	169.30	-0.48	-0.28%	106.10	179.70	172.50	1.86%	122.62	38.07%	9.32%	10.61%
TCS	3112.50	-20.90	-0.67%	17.33	538.50	4547.00	31.55%	2991.60	4.04%	3.68%	-30.72%
TECHM	1520.00	-5.50	-0.36%	8.25	125.17	1807.70	15.92%	1209.40	25.68%	2.61%	-7.88%
TITAN	3531.90	-40.00	-1.12%	3.62	128.22	3867.00	8.67%	2925.00	20.75%	2.36%	-5.18%
TRENT	5135.00	5.00	0.10%	9.55	491.39	8345.00	38.47%	4488.00	14.42%	-4.48%	-29.08%
ULTRACEMCO	12419.00	49.00	0.40%	1.80	222.69	13097.00	5.18%	10047.85	23.60%	0.43%	5.56%
WIPRO	251.34	-0.60	-0.24%	37.00	92.82	324.60	22.57%	228.00	10.24%	2.08%	-54.24%
ETERNAL	323.60	2.20	0.68%	162.84	526.51	334.40	3.23%	194.80	66.12%	0.94%	#VALUE!

## Disclaimer / Disclosures

### ANALYST CERTIFICATION

I, Mrs. Vaishali Parekh B.com, Research Analyst, author and the name subscribed to this report, hereby certify that all of the views expressed in this research report accurately reflect our views about the subject issuer(s) or securities. We also certify that no part of our compensation was, is, or will be directly or indirectly related to the specific recommendation(s) or view(s) in this report.

Terms & conditions and other disclosures:

Prabhudas Lilladher Pvt. Ltd, Mumbai, India (hereinafter referred to as "PL") is engaged in the business of Stock Broking, Portfolio Manager, Depository Participant and distribution for third party financial products. PL is a subsidiary of Prabhudas Lilladher Advisory Services Pvt Ltd. which has its various subsidiaries engaged in business of commodity broking, investment banking, financial services (margin funding) and distribution of third party financial/other products, details in respect of which are available at [www.plindia.com](http://www.plindia.com)

This document has been prepared by the Research Division of PL and is meant for use by the recipient only as information and is not for circulation. This document is not to be reported or copied or made available to others without prior permission of PL. It should not be considered or taken as an offer to sell or a solicitation to buy or sell any security.

The information contained in this report has been obtained from sources that are considered to be reliable. However, PL has not independently verified the accuracy or completeness of the same. Neither PL nor any of its affiliates, its directors or its employees accepts any responsibility of whatsoever nature for the information, statements and opinion given, made available or expressed herein or for any omission therein.

Recipients of this report should be aware that past performance is not necessarily a guide to future performance and value of investments can go down as well. The suitability or otherwise of any investments will depend upon the recipient's particular circumstances and, in case of doubt, advice should be sought from an independent expert/advisor.

Either PL or its affiliates or its directors or its employees or its representatives or its clients or their relatives may have position(s), make market, act as principal or engage in transactions of securities of companies referred to in this report and they may have used the research material prior to publication.

PL may from time to time solicit or perform investment banking or other services for any company mentioned in this document.

PL is registered as Research Analyst under Securities and Exchange Board of India (Research Analysts) Regulations, 2014 PL submits that no material disciplinary action has been taken on us by any Regulatory Authority impacting Equity Research Analysis activities.

PL or its research analysts or its associates or his relatives do not have any financial interest in the subject company.

PL or its research analysts or its associates or his relatives do not have actual/beneficial ownership of one per cent or more securities of the subject company at the end of the month immediately preceding the date of publication of the research report.

PL or its research analysts or its associates or his relatives do not have any material conflict of interest at the time of publication of the research report.

PL or its associates might have received compensation from the subject company in the past twelve months.

PL or its associates might have managed or co-managed public offering of securities for the subject company in the past twelve months or mandated by the subject company for any other assignment in the past twelve months.

PL or its associates might have received any compensation for investment banking or merchant banking or brokerage services from the subject company in the past twelve months.

PL or its associates might have received any compensation for products or services other than investment banking or merchant banking or brokerage services from the subject company in the past twelve months PL or its associates might have received any compensation or other benefits from the subject company or third party in connection with the research report.

PL encourages independence in research report preparation and strives to minimize conflict in preparation of research report. PL or its analysts did not receive any compensation or other benefits from the subject Company or third party in connection with the preparation of the research report. PL or its Research Analysts do not have any material conflict of interest at the time of publication of this report.

It is confirmed that Mrs.Vaishali Parekh B.com, Research Analyst of this report has not received any compensation from the companies mentioned in the report in the preceding twelve months compensation of our Research Analysts is not based on any specific merchant banking, investment banking or brokerage service transactions.

The Research analysts for this report certifies that all of the views expressed in this report accurately reflect his or her personal views about the subject company or companies and its or their securities, and no part of his or her compensation was, is or will be, directly or indirectly related to specific recommendations or views expressed in this report.

The research analysts for this report has not served as an officer, director or employee of the subject company PL or its research analysts have not engaged in market making activity for the subject company

Our sales people, traders, and other professionals or affiliates may provide oral or written market commentary or trading strategies to our clients that reflect opinions that are contrary to the opinions expressed herein, and our proprietary trading and investing businesses may make investment decisions that are inconsistent with the recommendations expressed herein. In reviewing these materials, you should be aware that any or all of the foregoing, among other things, may give rise to real or potential conflicts of interest.

PL and its associates, their directors and employees may (a) from time to time, have a long or short position in, and buy or sell the securities of the subject company or (b) be engaged in any other transaction involving such securities and earn brokerage or other compensation or act as a market maker in the financial instruments of the subject company or act as an advisor or lender/borrower to the subject company or may have any other potential conflict of interests with respect to any recommendation and other related information and opinions.