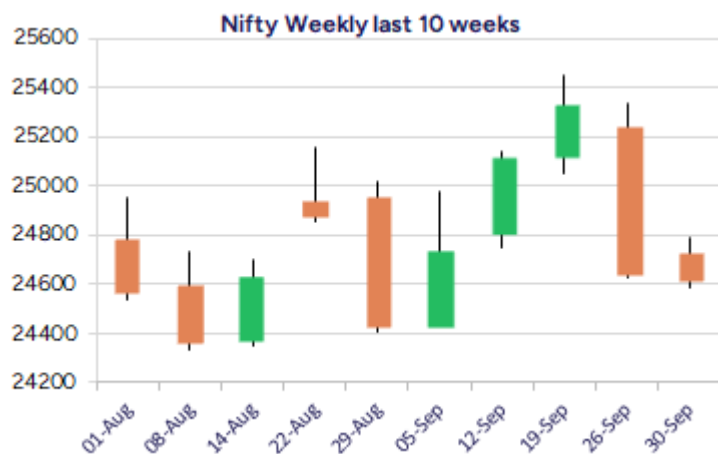
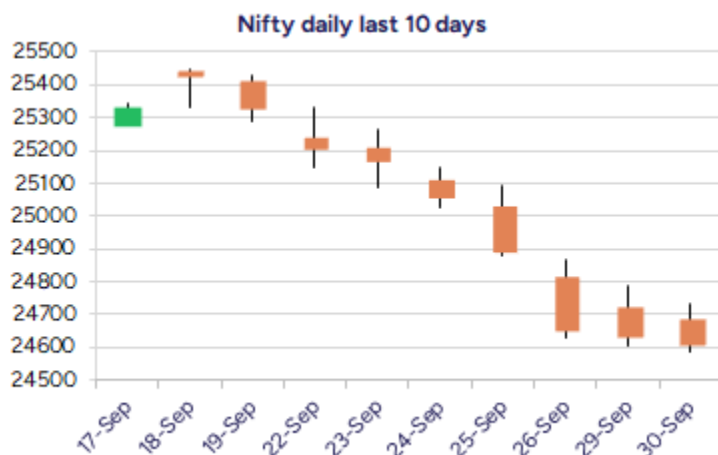


Date: 01<sup>st</sup> October 2025

\* Sensex 80267.62 -97.32

\* Nifty 24611.10 -23.80

\* Bank Nifty 54635.85 +174.85



\*Blue candle → Close rate > Open rate \* Red candle → Close rate < Open rate

## Market Preview

### Nifty sustains above 24600 zone

Nifty witnessed a sluggish session on the F&O segment expiry day with a narrow rangebound movement just sustaining above the 24600 zone with bias maintained with a cautious approach. BankNifty remained stagnant after the positive opening ending near the 54600 zone with bias maintained optimistic for further coming sessions. The market breadth was once again flat with the advance decline indicating a neutral ratio at close.

## Market Forecast

### Nifty daily range 24500 - 24800

Nifty, once again witnessed a sluggish session on the expiry day with a rangebound movement gripped between the 24700 and 24600 zone for the entire session to end almost on a flat note. With the bias overall maintained with a cautious approach, the index is precariously placed having the crucial and major support positioned near the 24450-24500 zone, as mentioned earlier, and on the upside, would desperately need a decisive breach above the 24900 zone to expect for further upside movement in the coming days.

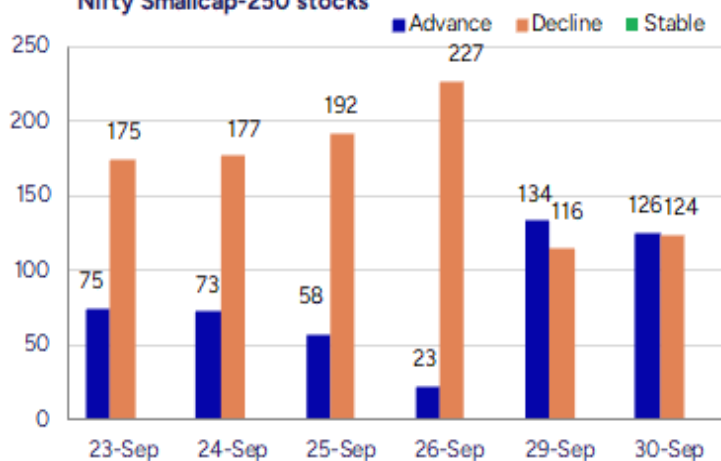
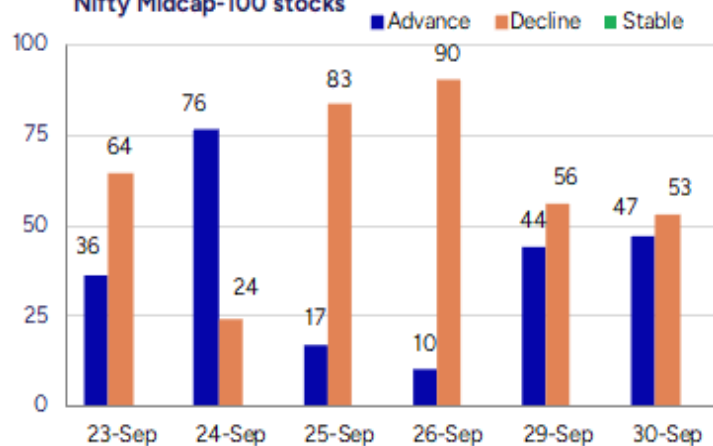
BankNifty, after opening on a positive note remained almost stagnant with narrow range movement to close in the green near 54600 zone with bias precariously placed anxiously anticipating for a pullback in the coming sessions. As said earlier, with the major support zone lying near 53600 level of the previous bottom made, the index would need to breach above the 50EMA level at 55100 zone and thereafter, the neckline of the Inverted Head and Shoulder at 55500 level to establish conviction and expect for further rise in the coming days.

The support for the day is seen at 24500 levels, while the resistance is seen at 24800 levels. BankNifty would have the daily range of 54200-55400 levels.

Indices	Period	Closing	% Chng	Trend	Reversal	2 Sup	1 Sup	Pivot	1 Res	2 Res
Nifty	Daily	24611.10	-0.10%	-7	24833.35	24499	24555	24644	24699	24788
	Weekly	24654.70	-2.65%	-1	24958.95	24170	24412	24872	25114	25574
	Monthly	24611.10	0.75%	-2	25016.70	23820	24215	24828	25224	25837
Bank Nifty	Daily	54635.85	0.32%	-5	54849.50	54354	54495	54644	54785	54934
	Weekly	54389.35	-1.93%	-1	54796.15	53434	53912	54788	55266	56143
	Monthly	54635.85	1.83%	-2	56782.20	52417	53526	54680	55789	56942
Sensex	Daily	80267.62	-0.12%	-7	80962.40	79906	80087	80382	80563	80859
	Weekly	80426.46	-2.66%	-1	81345.95	78867	79647	81112	81892	83358
	Monthly	80267.62	0.57%	-3	82019.05	77784	79026	81071	82312	84357

**Gainers - Losers ( Nifty 500 Stocks )**

Gainers				Losers			
Company Name	Last Price	% Gain	Volume	Company Name	Last Price	% Loss	Volume
Tata Inv Corp	10330.5	16.82	5439296	KPIT Tech	1097.7	-9.27	5977922
Ola Electric	56.95	5	18935888	Hitachi Energy	18001	-6.47	184110
KEC Intl	872.95	4.88	1081080	JSW Holdings	16309	-5	9161
NALCO	213.87	4.88	22791494	Godfrey Phillip	3384	-3.64	931981
JK Bank	105.03	4.55	7966151	Usha Martin	459.35	-3.59	1138216
Sammaan Capital	160.86	4.27	119564586	KPR Mill	1064.85	-3.49	436978
Five-Star Busin	536.6	4.03	4237043	Syrma SGS	767.4	-3.47	912844

**Nifty Smallcap-250 stocks**

**Nifty Midcap-100 stocks**


## Nifty Daily chart with RSI indicator



## BankNifty Daily chart with RSI indicator

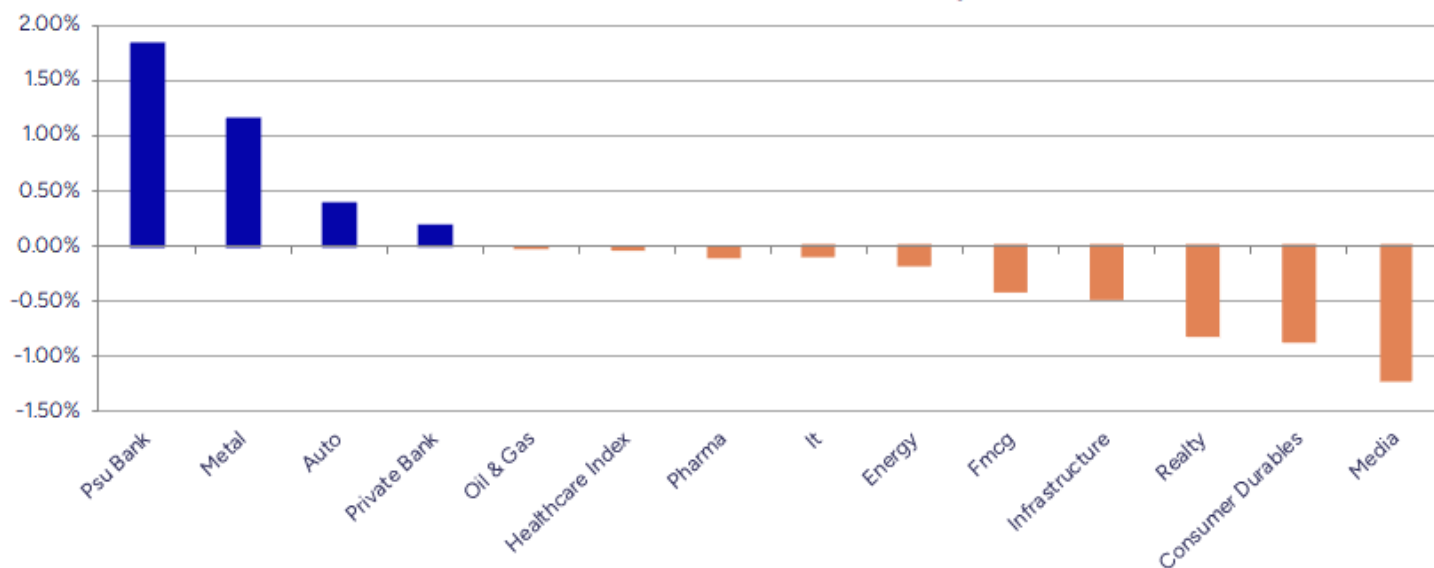


Breakouts - Cross above 200 DMA				Breakdown - Cross below 200 DMA			
Company Name	LCP	Change %	200 DMA	Company Name	LCP	Change %	200 DMA
Shree Karni Fab	677.55	10.31	614.22	Karma Energy	58.14	-3.69	60.37
JK Bank	105.03	4.03	100.96	Superhouse	166.47	-3.29	172.13
Peninsula Land	34.48	3.17	33.42	Phantom Digital	232.5	-2.98	239.63
Jana SFB	470.95	3.03	457.11	Basilic Fly	357.45	-2.92	368.21
ZFCVINDIA	12905	2.81	12552.82	63 Moons Tech	837.3	-1.87	853.22
Summit Sec	2190.3	2.49	2137.05	Platinum Indust	293.15	-1.73	298.32
Vineet Lab	39.26	2.45	38.32	Pelatro	380.1	-1.55	386.07
Ashapura Logist	79	2.24	77.27	Freshara Agro	169.6	-1.37	171.95
Effwa Infra & R	225	2.09	220.39	R Systems Intl	400.8	-1.36	406.34
Slone Infosyste	299.95	2.05	293.93	Camlin Fine	195.22	-1.20	197.6
KEC Intl	872.95	2.03	855.61	RBM Infracon	458.5	-1.13	463.72
Jupiter Life	1520.9	1.77	1494.51	PPAP Automotive	207.3	-0.97	209.34
Nakoda Group	34.26	1.72	33.68	Electrotherm	989.05	-0.90	998.04
JK Lakshmi Cem	857.3	1.60	843.77	INFOLLION	449.2	-0.82	452.92
Sinclairs Hotel	99.36	1.60	97.8	Sai Silks	151.31	-0.76	152.47
D.K. Enterprise	74.4	1.51	73.29	Signpost India	262.8	-0.76	264.82
MMP Industries	279.6	1.51	275.45	Sadhav Shipping	112.6	-0.73	113.43
Prudent Advisor	2578.6	1.11	2550.21	Restaurant Bran	76.97	-0.72	77.53

\* Stocks crossing above its Simple Moving Average (200DMA)

\* Stocks crossing below its Simple Moving Average (200DMA)

Sectoral Indices - Gainers Losers for the day



Stocks witnessing a volume surge as compared to their 5 day average volume

Watch out for the stocks that have seen a huge spurt in its share price over the last three days

Volume Shockers - NSE					
Company name	LCP	% Chg	Volume	Avg Vol *	% Chg
R M Drip & Spri	75.85	4.26	3336264	9800	33944
Tamil Newsprint	158.27	6.9	9830510	81181	12009
Spectrum Talent	97.6	-4.97	394400	3520	11105
Blue Dart	5703	2.24	1067298	14949	7039
Chemfab Alkalies	654.05	9.72	268828	4503	5870
KCK Industries	42.75	-2.62	757500	13600	5470
IFGL Refractory	294.49	18.35	8487734	179466	4629
Peninsula Land	34.48	8.74	10221136	238652	4183
Palash Securities	117.83	-1.57	145279	3988	3543
Prozone Intu	53.47	7.05	39523024	1107781	3468
Man Industries	364	-10.5	10091065	367370	2647
Cool Caps	90.8	-3.51	227500	8400	2608
EPM	94.79	-3.55	479608	18899	2438
Bliss GVS	152.46	3.45	5007008	233781	2042
Cybertech	214.78	10.08	9415646	531196	1673
Nakoda Group	34.26	16.25	799168	45529	1655
Netweb	3648.5	1.77	2658007	163390	1527
Bharat Wire Rop	170.81	9.88	1455425	96265	1412
Five-Star Busin	536.6	4.03	4237043	295334	1335
Umiya Buildcon	100.56	13.6	1012187	72488	1296

\* the Average Volume of last 5 days

Price Shockers - NSE				
Company name	LCP	Prv Close	% Chg	Volume
Cybertech	214.78	172.52	24.5	9415646
Namo Ewaste	200.05	165.15	21.13	347200
Tata Inv Corp	10330.5	8666	19.21	5439296
Vascon Engineer	68.76	57.88	18.8	28447396
Stallion India	238.45	202.05	18.02	4276857
Nakoda Group	34.26	29.28	17.01	799168
Umiya Buildcon	100.56	86.14	16.74	1012187
Sammaan Capital	160.86	137.82	16.72	119564586
IFGL Refractory	294.49	254.56	15.69	8487734
Kothari Product	95.71	82.85	15.52	109254
CCCL	26.3	23.12	13.75	2765282
Wockhardt	1516	1336.5	13.43	1440545
NK Industries	78	68.9	13.21	13887
NR Agarwal	433.2	385	12.52	119024
Shalimar Paints	85.54	76.18	12.29	329331
Bharat Road Net	22.86	20.57	11.13	373112
V2 Retail	2081.4	1885.9	10.37	448751
Kavveri Defence	155.12	140.71	10.24	130889
Arihant Academy	440.95	400	10.24	2400
Indo Rama Synth	60.44	54.83	10.23	1218072

\* the % price rise of the last 3 days



Nifty 50 Stocks - Summary Details											
Symbol	LTP	Chng	% Chng	Volume (lacs)	Turnover (crs.)	52w High	Diff with 52w H	52w Low	Diff with 52w L	365 days % chng	30 days % chng
NIFTY 50	24611.10	-23.80	-0.10%	3049.25	29285	25669	4.12%	21744	13.19%	0.75%	-5.99%
ADANIENT	2509.00	-0.50	-0.02%	7.13	179	3211	21.86%	2025	23.90%	11.64%	-19.95%
ADANIPTS	1406.10	22.90	1.66%	19.99	280	1494	5.88%	996	41.22%	6.91%	-3.65%
APOLLOHOSP	7435.00	-9.00	-0.12%	3.69	274	7980	6.83%	6001	23.90%	-2.64%	2.42%
ASIANPAINT	2353.00	10.40	0.44%	7.79	183	3358	29.93%	2125	10.74%	-6.69%	-29.02%
AXISBANK	1131.00	-1.20	-0.11%	81.65	923	1275	11.29%	934	21.16%	8.27%	-11.12%
BAJAJ-AUTO	8705.50	-12.00	-0.14%	2.86	248	12651	31.19%	7089	22.80%	0.54%	-31.48%
BAJAJFINSV	2001.00	-23.70	-1.17%	9.24	186	2135	6.28%	1552	28.96%	4.85%	-0.21%
BAJFINANCE	999.00	8.05	0.81%	71.82	717	1036	3.57%	645	54.86%	13.79%	-87.12%
BEL	403.80	3.85	0.96%	146.82	593	436	7.39%	240	68.07%	9.35%	37.66%
BHARTIARTL	1883.00	-19.20	-1.01%	59.46	1122	2046	7.96%	1511	24.62%	-0.55%	8.29%
CIPLA	1505.00	17.00	1.14%	10.41	156	1702	11.58%	1335	12.73%	-5.42%	-10.12%
COALINDIA	389.60	1.30	0.33%	53.63	209	516	24.50%	349	11.55%	4.04%	-24.44%
DRREDDY	1227.20	-7.40	-0.60%	26.35	324	1406	12.71%	1020	20.31%	-2.89%	-81.87%
EICHERMOT	7010.00	25.00	0.36%	3.64	255	7123	1.58%	4509	55.48%	14.79%	38.38%
ETERNAL	325.80	0.95	0.29%	188.41	614	344	5.26%	195	67.25%	3.68%	#VALUE!
GRASIM	2769.00	22.10	0.80%	4.40	121	2911	4.88%	2277	21.61%	-0.67%	-0.94%
HCLTECH	1385.90	-1.50	-0.11%	27.82	387	2012	31.13%	1303	6.38%	-4.79%	-23.41%
HDFCBANK	952.50	2.20	0.23%	282.97	2692	1019	6.51%	807	18.10%	-0.06%	-45.74%
HDFCLIFE	755.30	-1.30	-0.17%	34.36	260	821	7.97%	584	29.27%	-2.02%	3.59%
HINDALCO	764.00	10.20	1.35%	47.18	360	773	1.12%	546	39.81%	8.24%	1.98%
HINDUNILVR	2516.30	18.40	0.74%	16.78	422	2998	16.06%	2136	17.80%	-5.47%	-15.23%
ICICIBANK	1348.90	0.80	0.06%	201.67	2721	1500	10.07%	1186	13.74%	-3.56%	3.17%
INDIGO	5591.00	-116.00	-2.03%	14.25	799	6233	10.29%	3780	47.91%	-0.91%	13.12%
INFY	1442.60	0.80	0.06%	75.56	1091	2006	28.10%	1307	10.37%	-1.89%	-24.38%
ITC	401.70	-5.55	-1.36%	94.65	381	524	23.39%	390	2.96%	-2.00%	-23.18%
JIOFIN	294.00	-0.20	-0.07%	101.20	298	358	17.91%	199	48.00%	-5.94%	-18.36%
JSWSTEEL	1140.30	18.10	1.61%	27.71	317	1168	2.36%	880	29.58%	11.31%	14.09%
KOTAKBANK	1996.00	4.40	0.22%	58.62	1170	2302	13.29%	1679	18.88%	1.65%	6.42%
LT	3665.30	-23.10	-0.63%	16.76	614	3964	7.52%	2965	23.61%	1.61%	-1.26%
M&M	3435.00	16.90	0.49%	26.11	894	3724	7.76%	2425	41.65%	7.11%	7.64%
MARUTI	16035.00	51.00	0.32%	3.90	624	16435	2.43%	10725	49.51%	8.37%	18.77%
MAXHEALTH	1120.00	8.00	0.72%	55.71	623	1314	14.78%	889	26.00%	-3.43%	12.06%
NESTLEIND	1154.00	1.50	0.13%	14.09	162	1370	15.77%	1055	9.38%	-0.29%	-58.01%
NTPC	340.70	-0.25	-0.07%	83.08	283	448	24.03%	293	16.36%	3.94%	-22.08%
ONGC	239.55	-0.43	-0.18%	71.68	172	302	20.63%	205	16.85%	2.48%	-19.41%
POWERGRID	280.40	-0.20	-0.07%	187.73	527	357	21.56%	247	13.38%	1.82%	-20.89%
RELIANCE	1364.00	-8.80	-0.64%	146.05	1996	1551	12.06%	1115	22.35%	0.50%	-55.31%
SBILIFE	1790.90	2.20	0.12%	16.69	298	1912	6.33%	1373	30.48%	-0.83%	-4.89%
SBIN	873.70	2.95	0.34%	128.32	1121	881	0.77%	680	28.49%	8.72%	8.70%
SHRIRAMFIN	617.85	6.05	0.99%	58.82	363	729	15.25%	493	25.24%	6.18%	-82.99%
SUNPHARMA	1598.00	8.70	0.55%	22.57	360	1960	18.48%	1548	3.23%	-0.01%	-18.19%
TATACONSUM	1132.50	9.40	0.84%	13.78	155	1214	6.69%	883	28.27%	6.00%	-6.01%
TATAMOTORS	682.55	10.05	1.49%	150.02	1011	997	31.54%	536	27.40%	1.67%	-31.50%
TATASTEEL	169.05	0.07	0.04%	245.54	415	174	3.09%	123	37.86%	9.25%	1.33%
TCS	2891.00	-5.10	-0.18%	22.53	653	4495	35.68%	2885	0.20%	-6.36%	-32.96%
TECHM	1397.00	-13.70	-0.97%	22.25	314	1808	22.72%	1209	15.51%	-5.47%	-12.98%
TITAN	3372.90	-28.30	-0.83%	17.34	589	3864	12.70%	2925	15.31%	-7.21%	-11.78%
TRENT	4687.00	-43.50	-0.92%	7.52	354	8345	43.83%	4488	4.43%	-11.71%	-40.29%
ULTRACEMCO	12240.00	199.00	1.65%	2.79	340	13097	6.54%	10048	21.82%	-3.31%	2.26%
WIPRO	239.04	-0.60	-0.25%	55.91	134	325	26.36%	228	4.84%	-4.03%	-55.82%

## Disclaimer / Disclosures

### ANALYST CERTIFICATION

I, Mrs. Vaishali Parekh B.com, Research Analyst, author and the name subscribed to this report, hereby certify that all of the views expressed in this research report accurately reflect our views about the subject issuer(s) or securities. We also certify that no part of our compensation was, is, or will be directly or indirectly related to the specific recommendation(s) or view(s) in this report.

Terms & conditions and other disclosures:

Prabhudas Lilladher Pvt. Ltd, Mumbai, India (hereinafter referred to as "PL") is engaged in the business of Stock Broking, Portfolio Manager, Depository Participant and distribution for third party financial products. PL is a subsidiary of Prabhudas Lilladher Advisory Services Pvt Ltd. which has its various subsidiaries engaged in business of commodity broking, investment banking, financial services (margin funding) and distribution of third party financial/other products, details in respect of which are available at [www.plindia.com](http://www.plindia.com)

This document has been prepared by the Research Division of PL and is meant for use by the recipient only as information and is not for circulation. This document is not to be reported or copied or made available to others without prior permission of PL. It should not be considered or taken as an offer to sell or a solicitation to buy or sell any security.

The information contained in this report has been obtained from sources that are considered to be reliable. However, PL has not independently verified the accuracy or completeness of the same. Neither PL nor any of its affiliates, its directors or its employees accepts any responsibility of whatsoever nature for the information, statements and opinion given, made available or expressed herein or for any omission therein.

Recipients of this report should be aware that past performance is not necessarily a guide to future performance and value of investments can go down as well. The suitability or otherwise of any investments will depend upon the recipient's particular circumstances and, in case of doubt, advice should be sought from an independent expert/advisor.

Either PL or its affiliates or its directors or its employees or its representatives or its clients or their relatives may have position(s), make market, act as principal or engage in transactions of securities of companies referred to in this report and they may have used the research material prior to publication.

PL may from time to time solicit or perform investment banking or other services for any company mentioned in this document.

PL is registered as Research Analyst under Securities and Exchange Board of India (Research Analysts) Regulations, 2014 PL submits that no material disciplinary action has been taken on us by any Regulatory Authority impacting Equity Research Analysis activities.

PL or its research analysts or its associates or his relatives do not have any financial interest in the subject company.

PL or its research analysts or its associates or his relatives do not have actual/beneficial ownership of one per cent or more securities of the subject company at the end of the month immediately preceding the date of publication of the research report.

PL or its research analysts or its associates or his relatives do not have any material conflict of interest at the time of publication of the research report.

PL or its associates might have received compensation from the subject company in the past twelve months.

PL or its associates might have managed or co-managed public offering of securities for the subject company in the past twelve months or mandated by the subject company for any other assignment in the past twelve months.

PL or its associates might have received any compensation for investment banking or merchant banking or brokerage services from the subject company in the past twelve months.

PL or its associates might have received any compensation for products or services other than investment banking or merchant banking or brokerage services from the subject company in the past twelve months PL or its associates might have received any compensation or other benefits from the subject company or third party in connection with the research report.

PL encourages independence in research report preparation and strives to minimize conflict in preparation of research report. PL or its analysts did not receive any compensation or other benefits from the subject Company or third party in connection with the preparation of the research report. PL or its Research Analysts do not have any material conflict of interest at the time of publication of this report.

It is confirmed that Mrs.Vaishali Parekh B.com, Research Analyst of this report has not received any compensation from the companies mentioned in the report in the preceding twelve months compensation of our Research Analysts is not based on any specific merchant banking, investment banking or brokerage service transactions.

The Research analysts for this report certifies that all of the views expressed in this report accurately reflect his or her personal views about the subject company or companies and its or their securities, and no part of his or her compensation was, is or will be, directly or indirectly related to specific recommendations or views expressed in this report.

The research analysts for this report has not served as an officer, director or employee of the subject company PL or its research analysts have not engaged in market making activity for the subject company

Our sales people, traders, and other professionals or affiliates may provide oral or written market commentary or trading strategies to our clients that reflect opinions that are contrary to the opinions expressed herein, and our proprietary trading and investing businesses may make investment decisions that are inconsistent with the recommendations expressed herein. In reviewing these materials, you should be aware that any or all of the foregoing, among other things, may give rise to real or potential conflicts of interest.

PL and its associates, their directors and employees may (a) from time to time, have a long or short position in, and buy or sell the securities of the subject company or (b) be engaged in any other transaction involving such securities and earn brokerage or other compensation or act as a market maker in the financial instruments of the subject company or act as an advisor or lender/borrower to the subject company or may have any other potential conflict of interests with respect to any recommendation and other related information and opinions.