

Key Indices Update

Indices	Close	Change (%)
Nifty	25,522.50	0.24↑
Sensex	83,712.51	0.32↑
Midcap	59,415.45	0.17↓
Smallcap	18,895.20	0.29↓

Trend Strength Indicator

Nifty 50 Stocks above 200 EMA	NSE Advance / Decline
39	1352/1564

Key Data

Data	Current	Previous
Dow Jones	44,204.6	44,384.6
U.S. Dollar Index	97.53	97.34
Brent Crude (USD/BBL)	70.00	69.12
US 10Y Bond Yield (%)	4.41	4.39
India 10Y Bond Yield (%)	6.36	6.36

Sectoral Data

Sector	Close	Change (%)
BANKNIFTY	57250.40	0.53↑
NIFTYAUTO	23863.55	0.34↓
NIFTYENERG	36605.45	0.20↑
NIFTYFINSR	29097.50	0.60↑
NIFTYFMCG	55555.00	0.18↓
NIFTYIT	38951.95	0.22↑
NIFTYMEDIA	1736.60	0.40↓
NIFTYMETAL	9508.95	0.14↓
NIFTYPHARM	22151.10	0.96↓
NIFTYREALT	982.35	0.99↑

Fundamental

Refer Page 02

Stock for Investment

Stock Name	Sector	*CMP (₹)	^TP (₹)	Upside
LEMONTREE	Hotel	146	174	19.0%

*CMP as on July 08 2025

Top News

- ✦ Ola Electric has launched **MoveOS 5**, a major **software upgrade** for its **S1 scooters** and **Roadster X motorcycles**, adding **50+ new features** to boost **performance, reliability, and range**, ensuring a smarter and more efficient ride.
- ✦ RailTel Corporation of India Ltd. has received a **Letter of Intent (LOI)** from **Central Warehousing Corporation** for a ₹96.99 crore project. The order involves the **supply, installation, testing, commissioning, and maintenance** of **Smart Warehousing Elements** across **226 foodgrain warehouses** nationwide.

Technical

Refer Page 03-04

- ✦ **Nifty continued its consolidation phase for yet another session** but managed to end marginally in the green.
- ✦ After a flat start, the **Nifty traded in a narrow range for most of the day**; however, a surge in the final half hour helped the index cross the 25,500 hurdle, eventually settling at 25,522.50.
- ✦ Meanwhile, a **mixed trend across sectors kept traders engaged**, with realty, financials, and banking emerging as top gainers, while pharma and auto lagged.
- ✦ The **broader indices also witnessed volatility** but ended with marginal losses.
- ✦ However, **participants should avoid complacency and maintain their focus on stock selection**, as sectoral participation continues on a rotational basis.
- ✦ **Stock of the day - PFC**

Fundamental

Top News

- 01** Ola Electric has launched **MoveOS 5**, a major **software upgrade** for its **S1 scooters** and **Roadster X motorcycles**, adding **50+ new features** to boost **performance, reliability, and range**, ensuring a smarter and more efficient ride.
- 02** RailTel Corporation of India Ltd. has received a **Letter of Intent (LOI)** from **Central Warehousing Corporation** for a ₹96.99 crore project. The order involves the **supply, installation, testing, commissioning, and maintenance** of **Smart Warehousing Elements** across **226 foodgrain warehouses** nationwide.
- 03** **Ventive Hospitality Ltd.** and **Marriott International** have expanded their partnership by signing agreements for **seven new hotels** totaling **1,548 rooms** across **India and Sri Lanka**. The expansion includes **luxury, upper upscale, and upscale** properties, strengthening their regional presence.
- 04** **Happiest Minds** launches **FuzionX Gaming Studio™** through its subsidiary PureSoftware, aiming to **redefine B2B casino gaming services** with tech innovation and scalability.
- 05** **Multi Commodity Exchange of India** Ltd launches **Electricity Futures**, enhancing its commodities portfolio and **providing a new risk management tool** for the growing electricity sector.

Stock for Investment

Lemon Tree Hotels Ltd.

Stock Symbol	LEMONTREE
Sector	Hotel
*CMP (₹)	146
^Target Price (₹)	174
Upside	19.0%

*CMP as on July 08, 2025

^Time horizon - upto 11 Months

- ✦ Lemon Tree Hotels Limited (LTH) is **India's largest hotel chain operator in the mid-priced segment**, with **10,269 rooms across 111 hotels in 73 destinations**, operating under five brands: **Aurika, Lemon Tree Premier, Lemon Tree Hotels, Red Fox Hotel, and Keys**.
- ✦ LTH is strategically **advancing its asset-light growth model** after building a strong brand presence. It **aims to scale** managed and franchised rooms to **over 15,000 by CY28/FY29**, up from the **current 11,101** (including operational and pipeline inventory).
- ✦ LTH **aims to build strong brand stickiness** and unlock network effects, where **new openings in underserved cities** boost demand across its portfolio, **driving system-wide occupancy and RevPAR growth**.
- ✦ Company maintains **a strong focus on operational efficiency and disciplined cost management**, which not only reinforces profitability but also **supports long-term growth across both owned and asset-light models**.
- ✦ We estimate Company's **revenue, EBITDA, and PAT to grow at a CAGR of 14.6%, 16.1%, and 33.5% over FY25-27E**, respectively. Accordingly, we initiate coverage on Lemon Tree Hotels with a **Buy** rating and a target price of **₹174**, valuing the company **at 18x FY27E EV/EBITDA**.

Technical

Positive tone amid consolidation. Focus on stocks with high relative strength.

NIFTY

25522.50 ▲ 61.20 (0.24%)

S1

25450

S2

25300

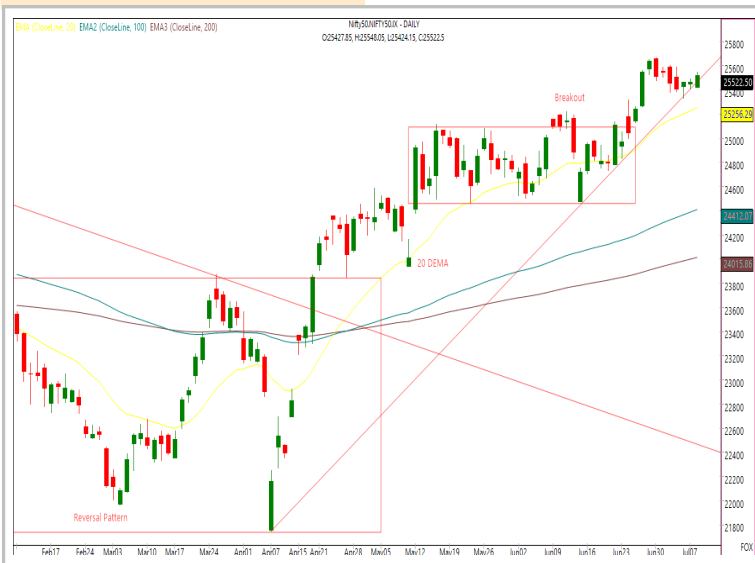
R1

25650

R2

25750

Technical Chart : **Daily**



- ✦ **Nifty continued its consolidation phase for yet another session** but managed to end marginally in the green.
- ✦ After a flat start, the **Nifty traded in a narrow range for most of the day**; however, a surge in the final half hour helped the index cross the 25,500 hurdle, eventually settling at 25,522.50.
- ✦ The **broader indices also witnessed volatility** but ended with marginal losses.
- ✦ However, **participants should avoid complacency and maintain their focus on stock selection**, as sectoral participation continues on a rotational basis.

BANKNIFTY

57256.30 ▲ 307.10 (0.54%)

S1

57000

S2

56700

R1

57650

R2

58200

Technical Chart : **Daily**



- ✦ **The banking index remains confined within a narrow range of 56,600 to 57,600**, maintaining its position above the 20-day EMA.
- ✦ **The sector exhibited mixed performance**, with Kotak Bank leading upside with gains exceeding 3%, while Axisbank and Federalbank were notable underperformers.
- ✦ A decisive **breakout above the upper resistance level near 57,600** would likely indicate a clear directional move.
- ✦ **Key resistance is anticipated in the 58,000 to 58,500 zone**, while **support levels are expected near 56,600**.

Technical

Stock of the day	Recom.	CMP (₹)	Range*	SL	Target
PFC	BUY	419.80	418-420	408	440

Technical Chart : **Weekly**



- ✦ **PFC is currently trading with the positive bias**, characterized by the formation of higher highs and higher lows—key indicators of an impending upward trend.
- ✦ The stock has **successfully rebounded after retracing 61.8% of its previous swing**, with volume levels providing additional confirmation.
- ✦ The prevailing price structure **suggests the establishment of a strong base**, positioning the stock favorably for the next phase of its upward movement.
- ✦ **Traders are encouraged to consider initiating long positions** with the recommended levels.

Momentum Stocks Midcap	Name	Price	Price %
	SONATSOFTW	438.00	5.01↗
	MSUMI	64.50	3.93↗
	KPRMILL	1200.00	3.60↗
	VTL	498.00	0.14↘
	CIEINDIA	442.55	2.07↘

Name	Price	Price %	Range Breakout / Breakdown
IIFL	504.00	3.45↗	
ABFRL	79.50	1.79↗	
NTPC	342.95	1.63↗	
ACC	1981.50	0.87↗	
SONACOMS	460.80	1.60↘	

Top 5 F&O Gainers ↗	Name	Price	Price %
	NHPC	88.05	4.28↗
	KOTAKBANK	2223.90	3.45↗
	IIFL	504.00	3.45↗
	DELHIVERY	409.50	3.38↗
	HDFCAMC	5126.00	2.54↗

Name	Price	Price %	Top 5 F&O Losers ↘
TITAN	3440.00	5.88↘	
BSE	2490.00	5.55↘	
ANGELONE	2691.80	3.67↘	
AUROPHARMA	1142.00	3.64↘	
LUPIN	1922.00	2.86↘	

Bullish Charts	Name	Price	Price %
	CUMMINSIND	3482.00	1.34↗
	ETERNAL	263.65	1.97↗
	KOTAKBANK	2223.90	3.45↗
	NHPC	88.05	4.28↗
	PFC	420.50	2.19↗

Name	Price	Price %	Bearish Charts
ANGELONE	2691.80	3.67↘	
BSE	2490.00	5.55↘	
CROMPTON	343.70	2.23↘	
GRANULES	482.00	2.27↘	
TITAN	3440.00	5.88↘	

Research Team

Name	Email ID
<i>Ajit Mishra</i>	<i>ajit.mishra@religare.com</i>
<i>Abhijeet Banerjee</i>	<i>abhijeet.banerjee@religare.com</i>
<i>Gaurav Sharma</i>	<i>gauravsharma2@religare.com</i>
<i>Ashwani Harit</i>	<i>ashwani.harit@religare.com</i>
<i>Divya Parmar</i>	<i>divya.parmar@religare.com</i>
<i>Vinay Kalani</i>	<i>vinay.kalani1@religare.com</i>
<i>Rajan Gupta</i>	<i>rajan.gupta1@religare.com</i>

Disclaimer

Before you use this research report, please ensure to go through the disclosure inter-alia as required under Securities and Exchange Board of India (Research Analysts) Regulations, 2014 and Research Disclaimer at the following link: <https://www.religareonline.com/disclaimer>

Specific analyst(s) specific disclosure(s) inter-alia as required under Securities and Exchange Board of India (Research Analysts) Regulations, 2014 is/ are as under:

Statements on ownership and material conflicts of interest, compensation- Research Analyst (RA) [Please note that only in case of multiple RAs, if in the event answers differ inter-se between the RAs, then RA specific answer with respect to questions under F(a) to F(j) below, are given separately]:

S. No.	Statement	Answer	
		Yes	No
	I/we or any of my/our relative has any financial interest in the subject company? [If answer is yes, nature of interest is given below this table]		No
	I/we or any of my/our relatives, have actual/beneficial ownership of one percent. or more securities of the subject company, at the end of the month immediately preceding the date of publication of the research report or date of the public appearance?		No
	I/we or any of my/our relative, has any other material conflict of interest at the time of publication of the research report or at the time of public appearance?		No
	I/we have received any compensation from the subject company in the past twelve months?		No
	I/we have managed or co-managed public offering of securities for the subject company in the past twelve months?		No
	I/we have received any compensation for brokerage services from the subject company in the past twelve months?		No
	I/we have received any compensation for products or services other than brokerage services from the subject company in the past twelve months?		No
	I/we have received any compensation or other benefits from the subject company or third party in connection with the research report?		No
	I/we have served as an officer, director or employee of the subject company?		No
	I/we have been engaged in market making activity for the subject company?		No

Nature of Interest if answer to F(a) above is Yes: Name(s) with Signature(s) of RA(s).

[Please note that only in case of multiple RAs and if the answers differ inter-se between the RAs, then RA specific answer with respect to questions under F(a) to F(j) above, are given below]

SS. No.	Name(s) of RA.	Signatures of RA	Serial Question of question which the signing RA needs to make a separate declaration / answer	Yes	No

Copyright in this document vests exclusively with RBL. This information should not be reproduced or redistributed or passed on directly or indirectly in any form to any other person or published, copied, in whole or in part, for any purpose, without prior written permission from RBL. We do not guarantee the integrity of any emails or attached files and are not responsible for any changes made to them by any other person.

No representations are being made about the performance or activities unless accompanied by data regarding performance, disclosures of all the risk factors, etc. and disclaimer that "Such representations are not indicative of future results

