

Dt.: 27th Aug, 2024

INDEX	NIFTY	BANKNIFTY	USDINR
Outlook	Bullish	Bullish	Neutral

INSTITUTIONAL TRADING ACTIVITY IN CRS.			
Category	Buy Value	Sell Value	Net Value
FII	12,749.26	12,265.90	+483.36
DII	13,045.47	11,175.25	+1,870.22

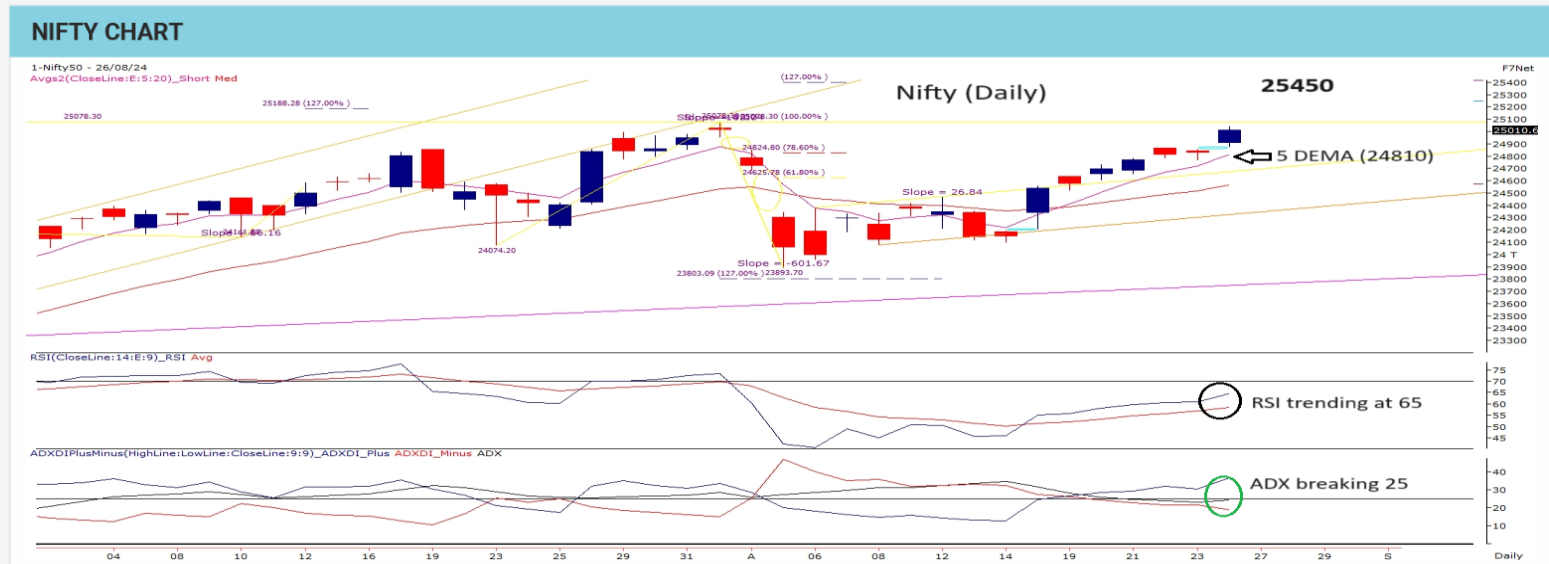
TRADE STATISTICS FOR 26/08/2024			
Instrument	No. of Contracts	Turnover (Cr.)	Put Call Ratio
Index Fut.	580951	39016.9	
Stock Fut.	3819154	305053.3	
Index Opt.	363071672	24163290	1.27
Stock Opt.	8078522	674474.6	
F&O Total	375550299	25181835	



PIVOT TABLE					
	R2	R1	PIVOT	S1	S2
NIFTY	25396	25212	25010	24887	24656
BANKNIFTY	51985	51469	51155	50542	49985

NIFTY FUT.			
	TRIGGER	T1	T2
Above	25100	25312	25450
Below	24800	23885	23570

BANK NIFTY FUT.			
	TRIGGER	T1	T2
Above	51250	51968	52365
Below	50500	49856	49251



Yesterday Nifty not only closed the gap window around 24960 but also re-conquered the crucial level of 25000 as it closed the day above the same. Its 5 DEMA support level has been elevated to 24810 which should act as an immediate base for the week which could help the index to extend its rally towards 25450 zone. With the daily RSI going over 60 and the ADX now approaching its breakout level of 25, expect trend momentum to accelerate further in the coming days ahead. Nifty Bank is experiencing a strong recovery after trending above its 20 DEMA resistance level. Options data for the expiry week shows strong resistance near 25500 with minor hurdles at 25200 & 25300, while fresh writing at 25000 & 24800 serving as immediate support bases. Momentum investors should increase their long bets & retain then until a decisive reversal is not evident on its weekly price chart. The index has been trending confidently above its five-month moving average (EMA) level of 23900. The weekly RSI shows a bullish crossover, suggesting incremental momentum for the index which could accelerate further momentum during the week towards 25450 once above 25120.

Trade Scanner: ATUL, BAJAJFINSRV, BHARATFORG, CHOLAFIN, CIPLA, DIVISLAB, GUJGAS, HAVELLS, ICICI BANK, JSWSTEEL, L&T, LTIM, NAUKRI, TATA CONSUMER, TITAN, UNITD-SPIRITS. ALKEM, BANDHAN BANK, AUROPHARMA, GODREJPROP, SBIN, PERSISTENT, WIPRO.

RESEARCH DESK: Sacchitanand Uttekar - VP - Research (Derivatives & Technicals)

Disclaimer: Investments in securities market are subject to market risk, read all the related documents carefully before investing.

The securities quoted are for illustration only and are not recommendatory | Registration granted by SEBI and certification from NISM in no way guarantee performance of the intermediary or provide any assurance of returns to investors.

Disclaimer: This document is for private circulation and information purpose only and should not be regarded as an investment, trading, taxation? legal or price? risk management advice. In no circumstances it is considered as an offer to sell or a solicitation of any offer to buy or sell the Equity derivatives mentioned herein. We and our affiliates, group? companies, directors and employees, and directors and employees of our affiliates and group? companies, including persons involved in the preparation or issuance of this material may (a) have positions in Equity (derivatives or physical) mentioned hereby or (b) have other positions which might have conflicting interest with respect to any related information. The information contained hereby may have been taken from sources which we believe are reliable. We do not guarantee that such information is accurate or complete and it should not be relied upon as such. Any opinion expressed reflects judgments at this date and are subject to change without notice. Risk of loss in Equity derivatives trading can be substantial. Persons trading in Equity Derivatives should consider the suitability of trading based upon their resources, risk appetite and other relevant information; and understand that statements regarding future prospects may not be realized.