



Solid Research
Solid Relationships

Fundamental Outlook

Market Setup

- **US stocks closed slightly lower on Monday**, with each of the three major indexes coming off a third straight week of gains, as renewed U.S.-Iran tensions put the durability of a two-week ceasefire in question.
- **Dow Futures is currently up +0.2% (~80 points)**
- **Asian markets are mostly trading with a gain of ~1-2%**
- On Monday, Indian equities ended largely flat as investors turned cautious amid limited clarity on US–Iran negotiations and the approaching ceasefire deadline.
- **Gift nifty is currently trading with a gain of +0.3% (~70 points)**
- **FII: -1059 Cr; DII: +2967 Cr**

Opening Cues: Flat to Positive

Stocks in News

TVS Motors: TVS Motor Company has entered into a Joint Development Agreement (JDA) with Hyundai Motor Company for the development, manufacturing, and commercialisation of electric micro-mobility three-wheelers. Additionally, the company announced its official entry into the Zambian market.

View: Positive

JSW Steel: The company has signed a joint venture agreement with South Korea's POSCO to set up a 6 mtpa greenfield steel plant in Odisha.

View: Positive

Quarterly Results performance:

Good: Groww

Inline: PNB Housing

Result Estimate – 21th April, 2026

Q4FY26 Expecations	Revenue (₹ Cr.)	Growth (%)		EBIDTA (₹ Cr.)	Growth (%)		PAT (₹ Cr.)	Growth (%)		
		Company	Mar-26		YoY	QoQ		Mar-26	YoY	QoQ
Nestle	6,433		16%	14%	1,598	13%	30%	1,409	15%	36%
360 One WAM	809		24%	1%	406	28%	0%	413	28%	-3%
HCL Technologies	34,346		14%	1%	7,064	9%	-5%	6,285	10%	14%
Persistent Systems	3,993		23%	6%	771	32%	5%	691	37%	6%

Fundamental Actionable Idea

Vedanta

CMP INR770, MTF Stock

- Vedanta's board has approved May 1, 2026, as the effective record date for its demerger.
- Shareholders will receive 1:1 equity stakes in four newly carved-out businesses including aluminium, iron & steel, power and oil & gas, as part of sweeping restructuring plan aimed at simplifying operations and unlocking value.
- Management targets to maintain strong growth in earnings, led by the upcoming capacity, which will produce higher VAP products. Capex plans are progressing well and will likely lead to further cost savings.
- Vedanta remains firm on its deleveraging plans, and going forward, higher cash flows will support both its expansion plans and deleveraging efforts.

View: Positive

Sector Initiation - Transmission Equipment Plays

CG Power

CMP INR795, TP INR900, 13% Upside, Buy, MTF Stock

- The T&D value chain, particularly segments focused on high-voltage transformers, continues to benefit from a robust capex outlay of INR9t until 2032, alongside a much stronger opportunity unfolding from global markets for quality players. This T&D capex cycle, which began in FY22-23, has driven sharp growth in order books, revenue, and the margin profiles for industry participants.
- With capacity expansions announced for most players in the system, the industry is positioning itself to meet sustained demand from both domestic and export markets.
- Though valuations are no longer cheap for the industry players but possibility of further earning upgrades and unfolding of export opportunities can sustain these valuations.
- We initiate coverage on CG Power (Buy, TP: INR900), Atlanta Electricals (Buy, TP: INR1,650), and GE Vernova T&D India (BUY, TP: INR4,750). Additionally, we reiterate our Buy rating on Siemens Energy (TP: INR3,700) and upgrade our rating on Hitachi Energy to Neutral (TP: INR27,000).

View: BUY

Transmission Equipment Plays Basket

- India's transmission sector is in a structural upcycle driven by the National Electricity Plan (FY23–32), targeting ~₹9tn investments to support over 600 GW capacity by 2032. With capacity expansions announced across key players, the industry is positioning to meet sustained demand from both domestic and export markets.
- Government initiatives such as the National Green Hydrogen Mission and RDSS are accelerating T&D upgrades, while renewable integration is driving grid modernization. High Voltage Direct Current (HVDC) projects remain key growth drivers due to high-value equipment needs, and India's Battery Energy Storage System (BESS) targets of 13.5 GW/51.5 GW by FY27/FY32 will further boost transmission sector demand.
- Transformer shortages in the US and Europe, driven by data centers, electrification, and aging grids, have extended lead times to 2–4 years, creating strong export opportunities for Indian manufacturers, while robust domestic demand supports absorption of ongoing capacity additions.

Time Frame: 12 months	Review: Monthly	Upside: 15–20%	Risk: High	Benchmark: Nifty 200
Script	CMP as on 20 th Apr 2026		Weightage (%)	
CG Power	795		25	
Siemens Energy	3,134		25	
GE Vernova T&D	4,239		25	
Atlanta Electricals	1,400		25	

Velocity Idea

Godawari Power & ISPAT

CMP: ₹300; SL: ₹278(8%); TGT: ₹345(15%); BUY;

- Godawari Power & Ispat (GPIL) is an integrated steel and mining company engaged in iron ore pellets, sponge iron, billets, wire rods, ferro alloys, and captive power generation, ensuring backward integration and operational efficiency across its value chain in India.
- GPIL invested ₹50 crore in its subsidiary GNEPL, taking the total investment to ₹350 crore to support a 20 GWh BESS project backed by a 5-year LFP cell supply agreement with Eve Power.
- GPIL is executing a greenfield 1 million tonne integrated steel plant, which would double its current steel manufacturing capacity. Additionally, investment in a power plant and ancillary infrastructure would provide stable cash flows.
- The Stock has broken out from a consolidation zone and headed up with high traded volumes.
- The RSI momentum indicator is rising to confirm the bullish trend.

MSCI May 2026 Expectations

Expectations for the MSCI May 2026 Index Review (Announcement: 13th May, Flows: 29th May)

21-Apr-26

Cut-off period has started for 17th April

Inclusions	Stock	BBG	Cutoff Px	CMP	% Away	Flows \$Mn	Shares mn	ADV 20D	Probability
Fresh	Indian Bank	INBK IS Equity	878	939	7%	197	19	9	100%
Fresh	Adani Energy Solutions Ltd	ADANIENS IS Equity	1231	1260	2%	188	13	5	90%

hba	Stock	BBG	Cutoff Px	CMP	% Away	Flows \$Mn	Shares mn	ADV 20D	Probability
Small to STD	National Aluminium Co Ltd	NACL IS Equity	386	439	12%	282	57	4	100%
Small to STD	Multi Commodity Exchange of In	MCX IS Equity	2784	2856	3%	278	9	2	80%
Small to STD	Federal Bank Ltd	FB IS Equity	288	294	2%	416	127	13	70%

*% Away Positive means above cutoff levels

Deletion	Stock	BBG	Deletion below	CMP	% Away	Outflows \$Mn
STD	Rail Vikas Nigam Ltd	RVNL IS Equity	360	303	-15.87%	103
STD	Jubilant Foodworks Ltd	JUBI IS Equity	478	459	-4.00%	141
STD	Kalyan Jewellers India Ltd	KALYANKJ IS Equity	436	427	-2.19%	120

Focus Investment Ideas

All Stocks Available in MTF

Duration : 1 Year Horizon

Stock Name	Rating	CMP (Rs)	Target (Rs)	Upside (%)
Bharat Dynamics	Buy	1367	1800	32%
Delhivery	Buy	463	580	25%
MTAR Technologies	Buy	4910	6000	22%
State Bank of India	Buy	1104	1300	18%
TVS Motors	Buy	3767	4461	18%

Technical Outlook

Nifty Technical Outlook

NIFTY (CMP : 24364) Nifty immediate support is at 24250 then 24100 zone while resistance at 24500 then 24700 zones. Now it has to continue to hold above 24300 zones for an up move towards 24500 then 24700 zones while supports can be seen at 24250 then 24100 zones.



Bank Nifty Technical Outlook

BANK NIFTY (CMP : 56582) Bank Nifty support is at 56250 then 56000 zones while resistance at 57000 then 57500 zones. Now it has to continue to hold above 56500 zones for an up move towards 57000 then 57500 levels while on the downside support is seen at 56250 then 56000 levels.



Sensex Technical Outlook

Sensex (CMP : 78520) Sensex support is at 78000 then 77800 zones while resistance at 79000 then 79200 zones. Now it has to continue to hold above 78500 for an up move towards 79000 then 79200 while supports can be seen at 78000 then 77800 zones.



Midcap100 Index Technical Outlook

21-Apr-26



Nifty Midcap100 Stats

Advance	Decline
49	51

- Index is near trendline resistance around 60000 levels.

Investment in securities market are subject to market risks, read all the related documents carefully before investing.

Smallcap250 Index Technical Outlook



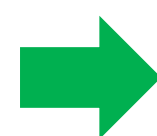
Nifty SmallCap250 Stats

Advance	Decline
69	181

- Index has formed Hanging man formation on Daily time frame.

Investment in securities market are subject to market risks, read all the related documents carefully before investing.

Sectoral Performance - Daily



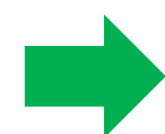
Indices	Closing	% Change			
	17-Apr	1-day	2-days	3-days	5-days
NIFTY 50	24365	0.05%	0.69%	0.55%	1.31%
NIFTY BANK	56582	0.03%	0.88%	0.50%	1.20%
NIFTY MIDCAP 100	59791	-0.18%	1.09%	1.72%	3.37%
NIFTY SMALLCAP 250	16380	-0.36%	1.11%	2.04%	3.98%
NIFTY FINANCIAL SERVICES	26537	0.06%	0.73%	0.35%	1.23%
NIFTY PRIVATE BANK	26995	-0.34%	0.44%	-0.13%	0.80%
NIFTY PSU BANK	8940	0.87%	1.62%	1.45%	1.85%
NIFTY IT	31586	-0.70%	-0.73%	0.15%	1.79%
NIFTY FMCG	49556	-0.21%	2.43%	2.62%	2.83%
NIFTY OIL & GAS	11434	0.21%	1.59%	1.42%	2.15%
NIFTY PHARMA	22457	-0.18%	-0.04%	0.09%	1.32%
NIFTY AUTO	26522	0.33%	0.53%	0.15%	-0.45%
NIFTY METAL	12830	-0.39%	0.70%	2.24%	3.83%
NIFTY REALTY	782	-0.62%	0.32%	0.71%	3.00%
NIFTY INDIA DEFENCE	8761	-0.61%	0.86%	2.51%	5.55%

- No decisive sectoral move but out performance was seen in Nifty PSU Banks.

Investment in securities market are subject to market risks, read all the related documents carefully before investing.

Sectoral Performance - Weekly

Name	1W Change	2W Change	3W Change	4W Change	5W Change
Nifty 50	0.05	1.31	7.27	6.77	5.41
Nifty Bank	0.03	1.2	9.76	8.24	5.91
Nifty IT	-0.7	1.79	3.76	6.92	8.17
Nifty Auto	0.33	-0.45	10.1	8.91	7.31
Nifty Metal	-0.39	3.83	11.98	14.94	12.42
Nifty Pharma	-0.18	1.32	2.97	-0.48	-0.37
Nifty FMCG	-0.21	2.83	7.19	6.74	5.42
Nifty Realty	-0.62	3	16.36	16.7	12.3
Nifty Media	0.9	4.7	9.67	10.44	9.52
Nifty PSU Bank	0.87	1.85	9.91	8.38	4.15



- Relatively flat on weekly time frame.

Technical – Conviction Delivery Idea

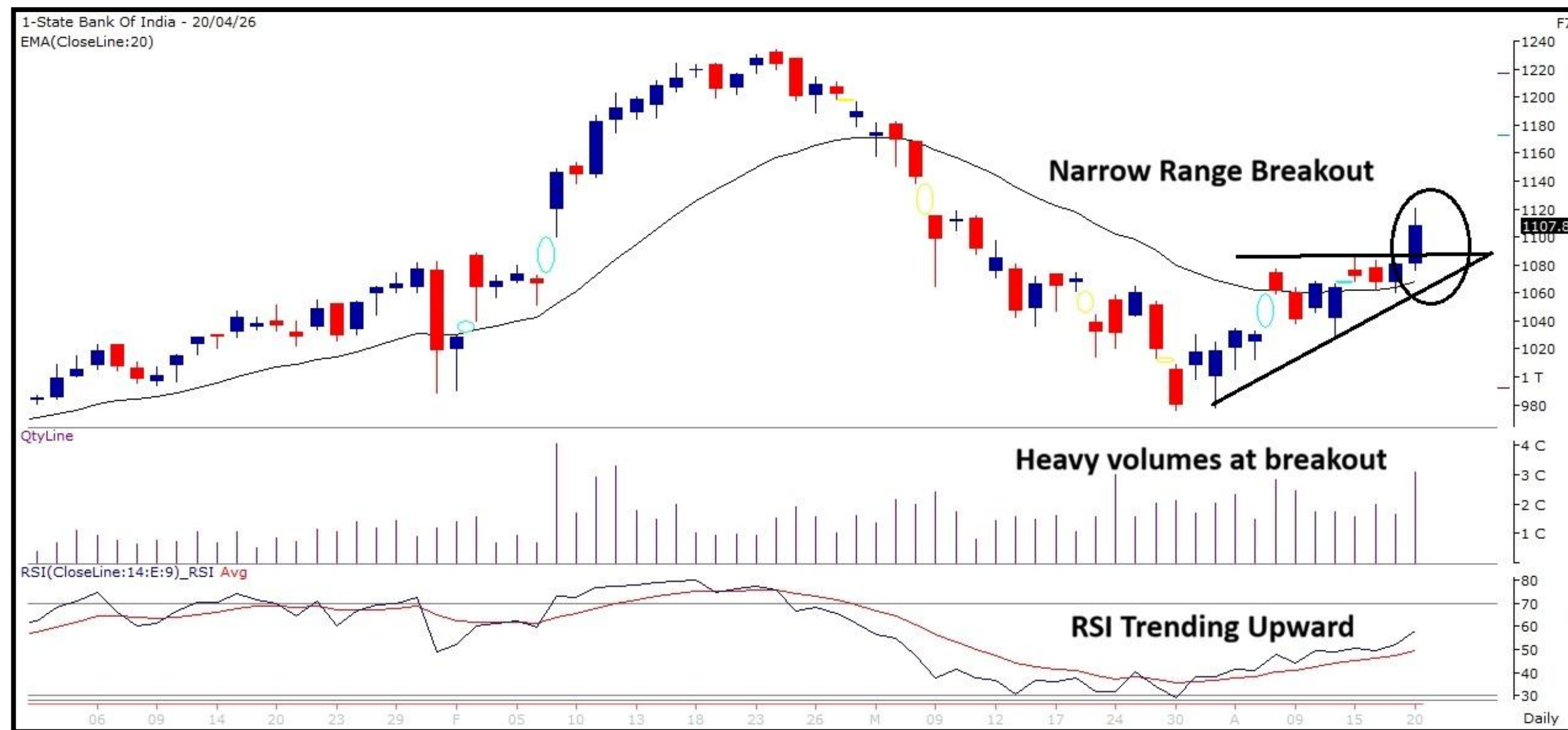
SBIN

(Mcap ₹ 10,22,519 Cr.)

F&O Stock, MTF stock

- Has given a narrow range breakout on Daily chart.
- Sustaining above 20 DEMA.
- RSI is trending Upward.
- Heavy volumes at breakout level.
- We recommend to buy the stock at CMP ₹1108 with a SL of ₹1060 and a TGT of ₹1184.

RECOs	CMP	SL	TARGET	DURATION
BUY	1108	1060	1184	1 Week



Technical Stocks On Radar

SCHNEIDER

(CMP: 1087, Mcap ₹ 26,089 Cr.)

MTF stock

- Has given a Trendline Breakout.
- Sustaining above 20 DEMA.
- RSI indicator confirming positive momentum.
- Immediate support at 1050.



BALRAMCHIN

(CMP: 516, Mcap ₹ 10,415 Cr.)

MTF stock

- Has given a Trendline Breakout.
- Sustaining above 20 DEMA.
- RSI given positive crossover.
- Heavy Volumes on Breakout.
- Immediate support at 490.



Derivative Outlook

Nifty : Option Data

- Maximum Call OI is at 25000 then 24500 strike while Maximum Put OI is at 24000 then 24200 strike.
- Call writing is seen at 24500 then 24500 strike while Put writing is seen at 24400 then 24300 strike.
- Option data suggests a broader trading range in between 23800 to 24800 zones while an immediate range between 24100 to 24600 levels.




Option - Buying side strategy

Index	Single Leg Buying	Multi Leg Strategy
Nifty (Weekly)	24400 CE if it holds above 24300	Bull call spread (Buy 24400 CE and Sell 24500 CE) at net premium cost of 30-35 points
Sensex (Weekly)	79800 CE if it holds above 78500	Bull call spread (Buy 79800 CE and Sell 80000 CE) at net premium cost of 30-40 points
Bank Nifty (Monthly)	57800 CE if it holds above 56500	Bull call spread (Buy 57000 CE and Sell 57500 CE) at net premium cost of 210-220 points

Option - Selling side strategy

Index	Writing
Nifty (Weekly)	23750 PE and 24750 CE
Sensex (Weekly)	74400 PE and 81500 CE
Bank Nifty (Monthly)	53000 PE and 59000 CE

Weekly Option Range for Option Writers based on Different Confidence Band								
Date		21-Apr-26	Weekly Expiry		21-Apr-26	Days to weekly expiry		1
Nifty			24365	India VIX		18.8		
Confidence Band	Probability	% Away From Spot	Range				Total Premium (Put + Call)	Types of Trades
			Put	Premium	Call	Premium		
1.00	68%	± 1.1%	24100	59	24600	27	86	Aggressive
1.25	79%	± 1.3%	24050	49	24650	20	69	Less Aggressive
1.50	87%	± 1.7%	23950	32	24750	11	43	Neutral
1.75	92%	± 1.9%	23900	26	24800	9	34	Conservative
2.00	95%	± 2.1%	23850	20	24850	7	27	Most Conservative
Date		21-Apr-26	Monthly Expiry		28-Apr-26	Days to weekly expiry		6
Bank Nifty			56582					
Confidence Band	Probability	% Away From Spot	Range				Total Premium (Put + Call)	Types of Trades
			Put	Premium	Call	Premium		
1.00	68%	± 2.8%	55000	321	58200	192	513	Aggressive
1.25	79%	± 3.5%	54600	251	58600	132	383	Less Aggressive
1.50	87%	± 4.2%	54200	195	59000	86	281	Neutral
1.75	92%	± 4.9%	53800	152	59400	59	211	Conservative
2.00	95%	± 5.6%	53400	119	59800	42	161	Most Conservative

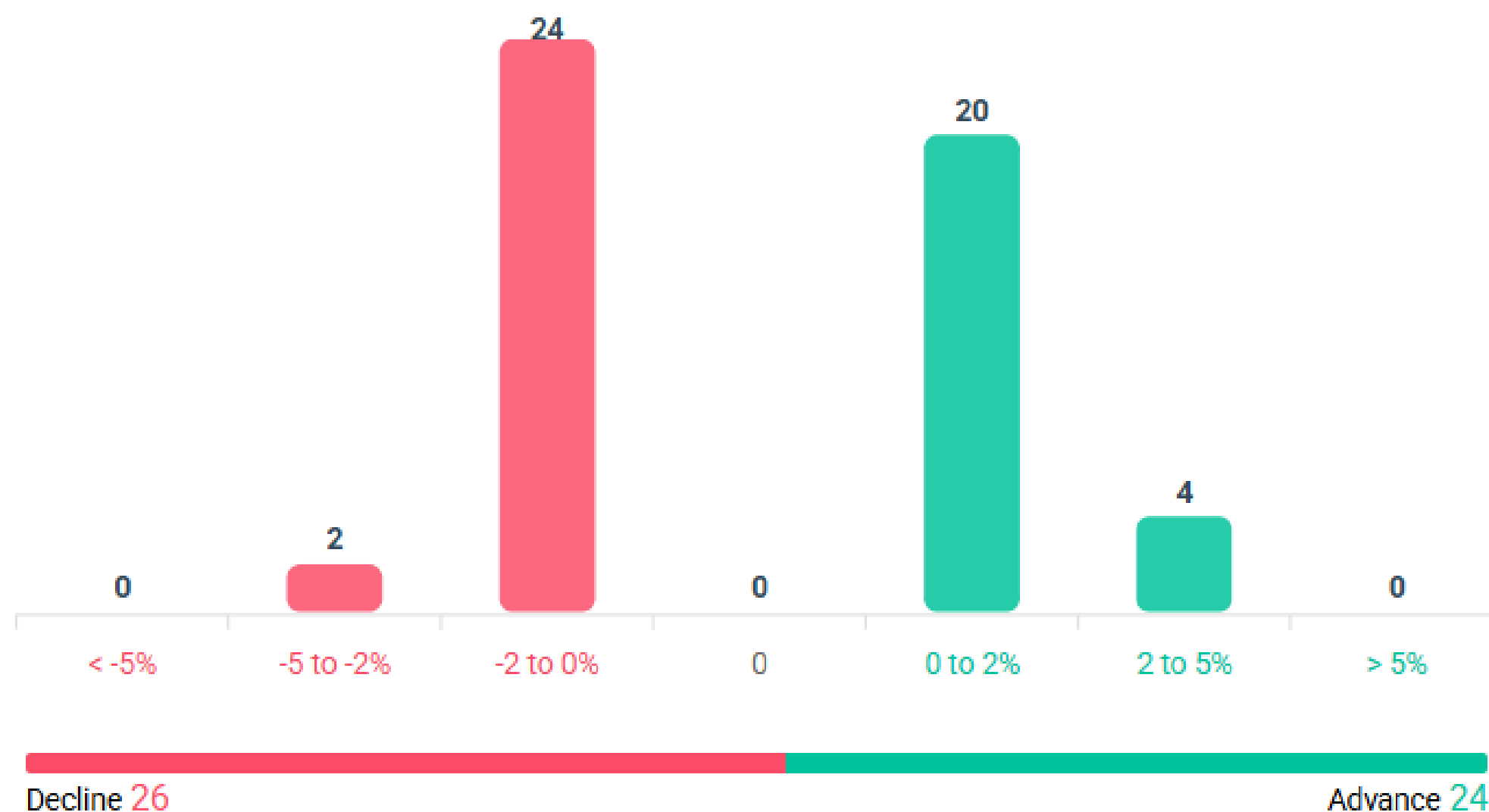
Investments in securities markets are subject to market risks. Please read all related documents carefully.

Nifty Advance Decline & Ban update

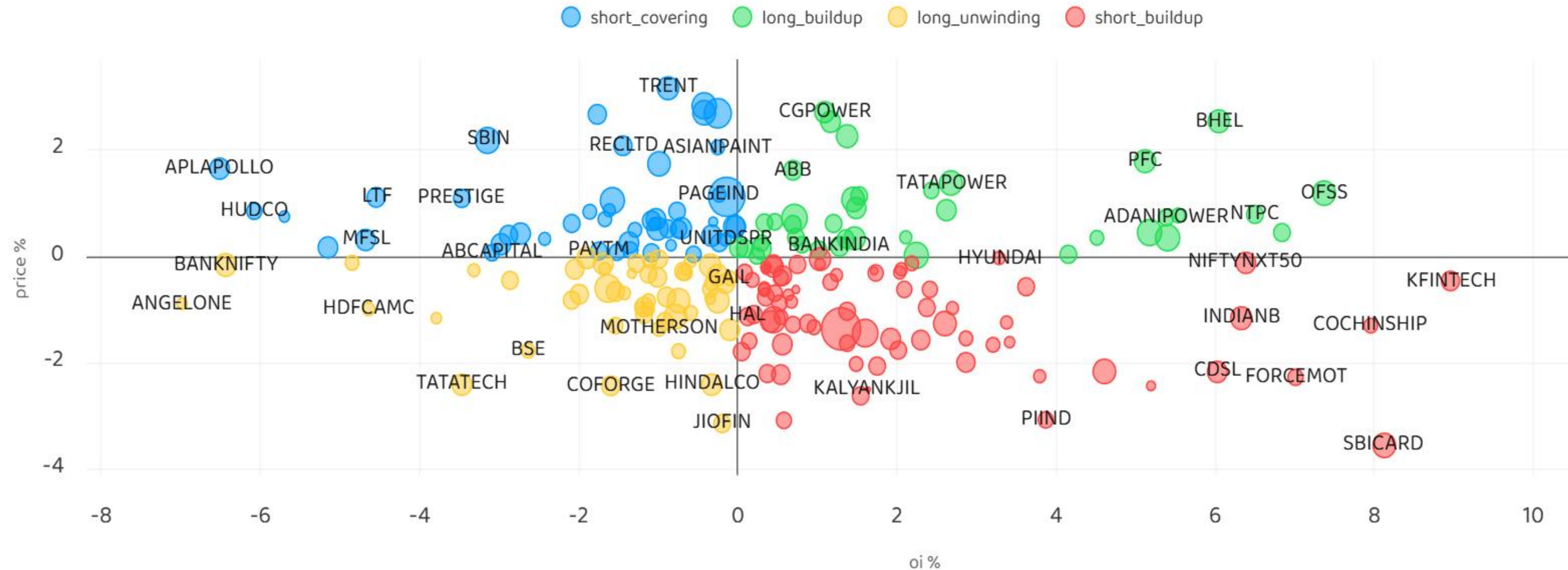
Stocks in Ban:

SAIL

All FNO Nifty 50 Bank Nifty Fin Nifty



Stocks : Derivatives Outlook



Investment in securities market are subject to market risks, read all the related documents carefully before investing.

Stocks : Options on radar

Stock	Call Strike	Trade	Buying Range	SL	TGT	Logic
TRENT	4250 CE	Buy	105-110	85	150	Short Covering
TORNTPOWER	1610 CE	Buy	33-35	30	45	Short Covering
ASIANPAINT	2520 CE	Buy	39-40	35	50	Short Covering

Stock	Put Strike	Trade	Buying Range	SL	TGT	Logic
PERSISTENT	5300 PE	Buy	165-170	145	210	Long Liquidation
PIIND	3020 PE	Buy	65-70	50	100	Short Build up

Quant Outlook

Quant Intraday Sell Ideas

What is this?

Based on technical indicators this strategy gives 2 stocks that have a high likelihood to fall during the day (from open to close). This is an intraday Sell strategy which can provide a good cushioning during a black swan event.

Today's Sell Ideas:

Stock Names	Close Price	SL (1%)	TP (1%)
YESBANK (Sell)	19.84	20.04	19.64
IDEA (Sell)	9.44	9.53	9.35

What are the rules?

- Stock names will be given at market open (9:15 am)
- Recommended time to entry: between 9:15 to 9:30 am.
- Entry: We short 2 stocks daily (intraday)
- Exit: we will exit at 3:15 as this is an intraday call
- SL: is placed at 1% of the open.
- Book profit: At 1% fall since open.
- In special situations the book profit might be delayed if the stock is in free fall.

Siddhartha Khemka
Head – Retail Research

Chandan Taparua, CMT, CFTe
Head – Derivatives & Technical Research

Ruchit Jain
Head – Technical Research

Disclosures:

The following Disclosures are being made in compliance with the SEBI Research Analyst Regulations 2014 (herein after referred to as the Regulations).

Motilal Oswal Financial Services Ltd. (MOFSL) is a SEBI Registered Research Analyst having registration no. INH000000412 and BSE enlistment no. 5028. MOFSL, the Research Entity (RE) as defined in the Regulations, is engaged in the business of providing Stock broking services, Depository participant services & distribution of various financial products. MOFSL is a listed public company, the details in respect of which are available on www.motilaloswal.com. MOFSL is registered with the Securities & Exchange Board of India (SEBI) and is a registered Trading Member with National Stock Exchange of India Ltd. (NSE) and Bombay Stock Exchange Limited (BSE), Multi Commodity Exchange of India Limited (MCX) and National Commodity & Derivatives Exchange Limited (NCDEX) for its stock broking activities & is Depository participant with Central Depository Services Limited (CDSL) National Securities Depository Limited (NSDL), NERL, COMRIS and CCRL and is member of Association of Mutual Funds of India (AMFI) for distribution of financial products and Insurance Regulatory & Development Authority of India (IRDA) as Corporate Agent for insurance products and is a member of Association of Portfolio Managers in India (APMI) for distribution of PMS products. Details of associate entities of Motilal Oswal Financial Services Ltd. are available on the website at <http://onlinereports.motilaloswal.com/Dormant/documents/Associate%20Details.pdf>

Details of pending Enquiry Proceedings of Motilal Oswal Financial Services Limited are available on the website at <https://galaxy.motilaloswal.com/ResearchAnalyst/PublishViewLitigation.aspx>. As per Regulatory requirements, Research Audit Report is uploaded on www.motilaloswal.com > MOFSL-Important Links > MOFSL Research Analyst Compliance Audit Report.

MOFSL, its associates, Research Analyst or their relatives may have any financial interest in the subject company. MOFSL and/or its associates and/or Research Analyst or their relatives may have actual beneficial ownership of 1% or more securities in the subject company at the end of the month immediately preceding the date of publication of the Research Report or date of the public appearance. MOFSL and its associate company(ies), their directors and Research Analyst and their relatives may have any other potential conflict of interests at the time of publication of the research report or at the time of public appearance, however the same shall have no bearing whatsoever on the specific recommendations made by the analyst(s), as the recommendations made by the analyst(s) are completely independent of the views of the associates of MOFSL even though there might exist an inherent conflict of interest in some of the stocks mentioned in the research report..

In the past 12 months, MOFSL or any of its associates may have:

- a) received any compensation/other benefits from the subject company of this report
- b) managed or co-managed public offering of securities from subject company of this research report,
- c) received compensation for investment banking or merchant banking or brokerage services from subject company of this research report,
- d) received compensation for products or services other than investment banking or merchant banking or brokerage services from the subject company of this research report.

- MOFSL and its associates have not received any compensation or other benefits from the subject company or third party in connection with the research report.
- Subject Company may have been a client of MOFSL or its associates during twelve months preceding the date of distribution of the research report.
- Research Analyst may have served as director/officer/employee in the subject company.
- MOFSL and research analyst may engage in market making activity for the subject company.

MOFSL and its associate company(ies), and Research Analyst and their relatives from time to time may have:

a) a long or short position in, act as principal in, and buy or sell the securities or derivatives thereof of companies mentioned herein.

(b) be engaged in any other transaction involving such securities and earn brokerage or other compensation or act as a marketmaker in the financial instruments of the company(ies) discussed herein or act as an advisor or lender/borrower to such company(ies) or may have any other potential conflict of interests with respect to any recommendation and other related information and opinions.; however the same shall have no bearing whatsoever on the specific recommendations made by the analyst(s), as the recommendations made by the analyst(s) are completely independent of the views of the associates of MOFSL even though there might exist an inherent conflict of interest in some of the stocks mentioned in the research report.

Above disclosures include beneficial holdings lying in demat account of MOFSL which are opened for proprietary investments only. While calculating beneficial holdings, It does not consider demat accounts which are opened in name of MOFSL for other purposes (i.e holding client securities, collaterals, error trades etc.). MOFSL also earns DP income from clients which are not considered in above disclosures.

To enhance transparency, MOFSL has incorporated a Disclosure of Interest Statement in this document. This should, however, not be treated as endorsement of the views expressed in the report. MOFSL and / or its affiliates do and seek to do business including investment banking with companies covered in its research reports. As a result, the recipients of this report should be aware that MOFSL may have a potential conflict of interest that may affect the objectivity of this report.

Terms & Conditions:

This report has been prepared by MOFSL and is meant for sole use by the recipient and not for circulation. The report and information contained herein is strictly confidential and may not be altered in any way, transmitted to, copied or distributed, in part or in whole, to any other person or to the media or reproduced in any form, without prior written consent of MOFSL. The report is based on the facts, figures and information that are considered true, correct, reliable and accurate. The intent of this report is not recommendatory in nature. The information is obtained from publicly available media or other sources believed to be reliable. Such information has not been independently verified and no guaranty, representation of warranty, express or implied, is made as to its accuracy, completeness or correctness. All such information and opinions are subject to change without notice. The report is prepared solely for informational purpose and does not constitute an offer document or solicitation of offer to buy or sell or subscribe for securities or other financial instruments for the clients. Though disseminated to all the customers simultaneously, not all customers may receive this report at the same time. MOFSL will not treat recipients as customers by virtue of their receiving this report.

Analyst Certification

The views expressed in this research report accurately reflect the personal views of the analyst(s) about the subject securities or issues, and no part of the compensation of the research analyst(s) was, is, or will be directly or indirectly related to the specific recommendations and views expressed by research analyst(s) in this report.

Disclosure of Interest Statement

Analyst ownership of the stock No

A graph of daily closing prices of securities is available at www.nseindia.com, www.bseindia.com. Research Analyst views on Subject Company may vary based on Fundamental research and Technical Research. Proprietary trading desk of MOFSL or its associates maintains arm's length distance with Research Team as all the activities are segregated from MOFSL research activity and therefore it can have an independent view with regards to subject company for which Research Team have expressed their views.

Regional Disclosures (outside India)

This report is not directed or intended for distribution to or use by any person or entity resident in a state, country or any jurisdiction, where such distribution, publication, availability or use would be contrary to law, regulation or which would subject MOFSL & its group companies to registration or licensing requirements within such jurisdictions.

For Hong Kong:

This report is distributed in Hong Kong by Motilal Oswal capital Markets (Hong Kong) Private Limited, a licensed corporation (CE AYY-301) licensed and regulated by the Hong Kong Securities and Futures Commission (SFC) pursuant to the Securities and Futures Ordinance (Chapter 571 of the Laws of Hong Kong) "SFO". As per SEBI (Research Analyst Regulations) 2014 Motilal Oswal Financial Services Limited (SEBI Reg No. INH000000412) has an agreement with Motilal Oswal capital Markets (Hong Kong) Private Limited for distribution of research report in Hong Kong. This report is intended for distribution only to "Professional Investors" as defined in Part I of Schedule 1 to SFO. Any investment or investment activity to which this document relates is only available to professional investor and will be engaged only with professional investors." Nothing here is an offer or solicitation of these securities, products and services in any jurisdiction where their offer or sale is not qualified or exempt from registration. The Indian Analyst(s) who compile this report is/are not located in Hong Kong & are not conducting Research Analysis in Hong Kong.

For U.S.

MOTILAL Oswal Financial Services Limited (MOFSL) is not a registered broker - dealer under the U.S. Securities Exchange Act of 1934, as amended (the "1934 act") and under applicable state laws in the United States. In addition MOFSL is not a registered investment adviser under the U.S. Investment Advisers Act of 1940, as amended (the "Advisers Act" and together with the 1934 Act, the "Acts"), and under applicable state laws in the United States. Accordingly, in the absence of specific exemption under the Acts, any brokerage and investment services provided by MOFSL, including the products and services described herein are not available to or intended for U.S. persons. This report is intended for distribution only to "Major Institutional Investors" as defined by Rule 15a-6(b)(4) of the Exchange Act and interpretations thereof by SEC (henceforth referred to as "major institutional investors"). This document must not be acted on or relied on by persons who are not major institutional investors. Any investment or investment activity to which this document relates is only available to major institutional investors and will be engaged in only with major institutional investors. In reliance on the exemption from registration provided by Rule 15a-6 of the U.S. Securities Exchange Act of 1934, as amended (the "Exchange Act") and interpretations thereof by the U.S. Securities and Exchange Commission ("SEC") in order to conduct business with Institutional Investors based in the U.S., MOFSL has entered into a chaperoning agreement with a U.S. registered broker-dealer, Motilal Oswal Securities International Private Limited. ("MOSIPL"). Any business interaction pursuant to this report will have to be executed within the provisions of this chaperoning agreement.

The Research Analysts contributing to the report may not be registered /qualified as research analyst with FINRA. Such research analyst may not be associated persons of the U.S. registered broker-dealer, MOSIPL, and therefore, may not be subject to NASD rule 2711 and NYSE Rule 472 restrictions on communication with a subject company, public appearances and trading securities held by a research analyst account.

For Singapore

In Singapore, this report is being distributed by Motilal Oswal Capital Markets (Singapore) Pte. Ltd. ("MOCMSPL") (UEN 201129401Z), which is a holder of a capital markets services license and an exempt financial adviser in Singapore. This report is distributed solely to persons who (a) qualify as "institutional investors" as defined in section 4A(1)(c) of the Securities and Futures Act of Singapore ("SFA") or (b) are considered "accredited investors" as defined in section 2(1) of the Financial Advisers Regulations of Singapore read with section 4A(1)(a) of the SFA. Accordingly, if a recipient is neither an "institutional investor" nor an "accredited investor", they must immediately discontinue any use of this Report and inform MOCMSPL.

In respect of any matter arising from or in connection with the research you could contact the following representatives of MOCMSPL. In case of grievances for any of the services rendered by MOCMSPL write to grievances@motilaloswal.com.

Nainesh Rajani

Email: nainesh.rajani@motilaloswal.com

Contact: (+65) 8328 0276

Disclaimer:

This report is intended for distribution to Retail Investors.

The report and information contained herein is strictly confidential and meant solely for the selected recipient and may not be altered in any way, transmitted to, copied or distributed, in part or in whole, to any other person or to the media or reproduced in any form, without prior written consent. This report and information herein is solely for informational purpose and may not be used or considered as an offer document or solicitation of offer to buy or sell or subscribe for securities or other financial instruments. Nothing in this report constitutes investment, legal, accounting and tax advice or a representation that any investment or strategy is suitable or appropriate to your specific circumstances. The securities discussed and opinions expressed in this report may not be suitable for all investors, who must make their own investment decisions, based on their own investment objectives, financial positions and needs of specific recipient. This may not be taken in substitution for the exercise of independent judgment by any recipient. Each recipient of this document should make such investigations as it deems necessary to arrive at an independent evaluation of an investment in the securities of companies referred to in this document (including the merits and risks involved), and should consult its own advisors to determine the merits and risks of such an investment. The investment discussed or views expressed may not be suitable for all investors. Certain transactions-including those involving futures, options, another derivative products as well as non-investment grade securities - involve substantial risk and are not suitable for all investors. No representation or warranty, express or implied, is made as to the accuracy, completeness or fairness of the information and opinions contained in this document. The Disclosures of Interest Statement incorporated in this document is provided solely to enhance the transparency and should not be treated as endorsement of the views expressed in the report. This information is subject to change without any prior notice. The Company reserves the right to make modifications and alternations to this statement as may be required from time to time without any prior approval. MOFSL, its associates, their directors and the employees may from time to time, effect or have effected an own account transaction in, or deal as principal or agent in or for the securities mentioned in this document. They may perform or seek to perform investment banking or other services for, or solicit investment banking or other business from, any company referred to in this report. Each of these entities functions as a separate, distinct and independent of each other. The recipient should take this into account before interpreting the document. This report has been prepared on the basis of information that is already available in publicly accessible media or developed through analysis of MOFSL. The views expressed are those of the analyst, and the Company may or may not subscribe to all the views expressed therein. This document is being supplied to you solely for your information and may not be reproduced, redistributed or passed on, directly or indirectly, to any other person or published, copied, in whole or in part, for any purpose. This report is not directed or intended for distribution to, or use by, any person or entity who is a citizen or resident of or located in any locality, state, country or other jurisdiction, where such distribution, publication, availability or use would be contrary to law, regulation or which would subject MOFSL to any registration or licensing requirement within such jurisdiction. The securities described herein may or may not be eligible for sale in all jurisdictions or to certain category of investors. Persons in whose possession this document may come are required to inform themselves of and to observe such restriction. Neither the Firm, not its directors, employees, agents or representatives shall be liable for any damages whether direct or indirect, incidental, special or consequential including lost revenue or lost profits that may arise from or in connection with the use of the information. The person accessing this information specifically agrees to exempt MOFSL or any of its affiliates or employees from, any and all responsibility/liability arising from such misuse and agrees not to hold MOFSL or any of its affiliates or employees responsible for any such misuse and further agrees to hold MOFSL or any of its affiliates or employees free and harmless from all losses, costs, damages, expenses that may be suffered by the person accessing this information due to any errors and delays.

This report is meant for the clients of Motilal Oswal only.

Investment in securities market are subject to market risks. Read all the related documents carefully before investing.

Registration granted by SEBI, enlistment as RA with Exchange and certification from NISM in no way guarantee performance of the intermediary or provide any assurance of returns to investors

Registered Office Address: Motilal Oswal Tower, Rahimtullah Sayani Road, Opposite Parel ST Depot, Prabhadevi, Mumbai-400025; Tel No.: 022 - 71934200 / 71934263; www.motilaloswal.com. Correspondence Address: Palm Spring Centre, 2nd Floor, Palm Court Complex, New Link Road, Malad (West), Mumbai- 400 064. Tel No: 022 71881000. Details of Compliance Officer: Neeraj Agarwal, Email Id: na@motilaloswal.com, Contact No.:022-40548085.

Grievance Redressal Cell:

Contact Person	Contact No.	Email ID
Ms. Hemangi Date	022 40548000 / 022 67490600	query@motilaloswal.com
Ms. Kumud Upadhyay	022 40548082	servicehead@motilaloswal.com
Mr. Ajay Menon	022 40548083	am@motilaloswal.com
Mr. Neeraj Agarwal	022 40548085	na@motilaloswal.com
Mr. Siddhartha Khemka	022 50362452	po.research@motilaloswal.com

Registration details: Motilal Oswal Financial Services Ltd. (MOFSL): INZ000158836 (BSE/NSE/MCX/NCDEX); CDSL and NSDL: IN-DP-16-2015; Research Analyst: INH000000412, BSE enlistment no. 5028, AMFI registered Mutual Fund Distributor and SIF Distributor: ARN.: 146822. IRDA Corporate Agent – CA0579, APMI: APRN00233. Motilal Oswal Financial Services Ltd. is a distributor of Mutual Funds, PMS, Fixed Deposit, Insurance, Bond, NCDs and IPO products.

Customer having any query/feedback/clarification may write to query@motilaloswal.com. In case of grievances for any of the services rendered by Motilal Oswal Financial Services Limited (MOFSL) write to grievances@motilaloswal.com, for DP to dp grievances@motilaloswal.com.

Investment in securities market are subject to market risks, read all the related documents carefully before investing.