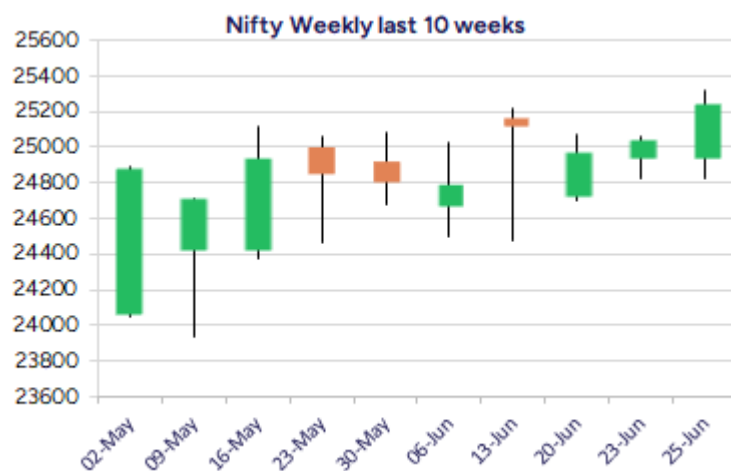
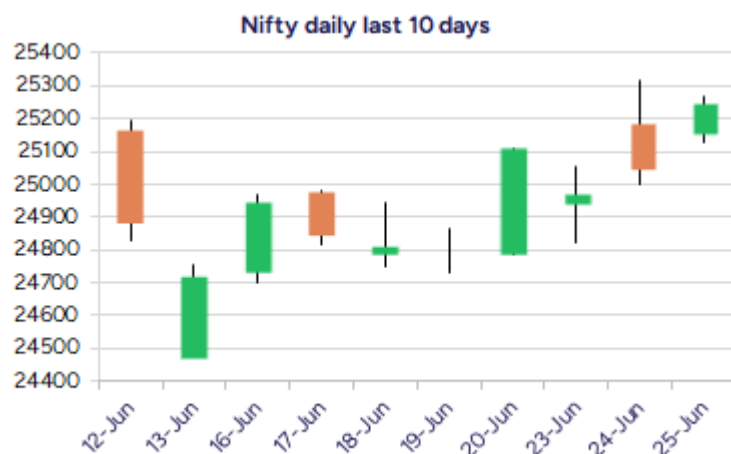


Date: 26th June 2025

* Sensex 82755.51 + 700.40

* Nifty 25244.75 + 200.40

* Bank Nifty 56621.15 + 159.25



*Blue candle → Close rate > Open rate * Red candle → Close rate < Open rate

Market Preview

Nifty ends on a positive note above 25200 zone

Nifty witnessed a strong session moving past the 25200 zone with overall bias improving and expecting for further rise in the coming sessions with the geo-political tensions easing out. BankNifty sustained above the 56000 zone with bias maintained positive and can carry on with the positive move further ahead to breach above the 57000 zone. The market breadth was strong with the advance decline indicating a ratio of 3:1 at close.

Market Forecast

Nifty daily range 25100-25500

Nifty, indicated a strong closing above the 25200 zone after a long wait with further rise expected in the coming sessions with the overall sentiment easing out and bias improving as of now. The index, as mentioned earlier, a decisive breach above the 25250 zone shall trigger for fresh further upward move in the coming days with targets of 25700 and 26200 levels visible. On the downside, the near-term support shall be elevated to 24800 zone which needs to be sustained to maintain the overall bias intact.

BankNifty, has moved into the positive territory above the 56000 zone with bias and sentiment improving expecting for further rise in the coming days, and once a decisive breach above the 57000 zone is confirmed, shall trigger for fresh upward move with higher targets of 58500 and 60000 levels achievable.

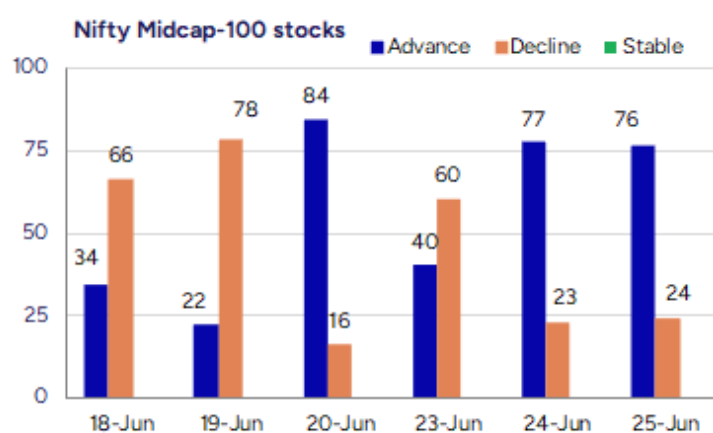
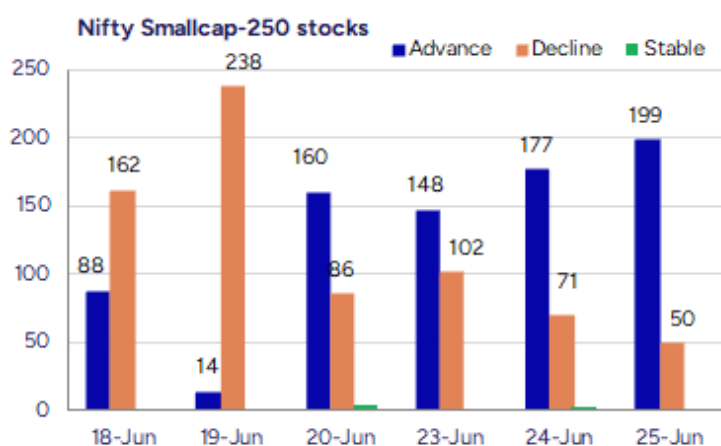
The 50EMA zone at 54900 level would be the important support whereas the near-term support is positioned near 55400 level which needs to be sustained as of now.

The support for the day is seen at 25100 levels while the resistance is seen at 25500 levels. BankNifty would have the daily range of 56200-57200 levels.

Indices	Period	Closing	% Chng	Trend	Reversal	2 Sup	1 Sup	Pivot	1 Res	2 Res
Nifty	Daily	25244.75	0.80%	4	25058.70	25070	25158	25212	25299	25354
	Weekly	25112.40	1.59%	1	24980.40	24557	24835	24984	25262	25412
	Monthly	24750.70	1.71%	1	24390.40	23422	24086	24600	25265	25779
Bank Nifty	Daily	56621.15	0.28%	4	56249.90	56314	56467	56574	56728	56835
	Weekly	56252.85	1.31%	-2	56195.25	55045	55649	55986	56590	56927
	Monthly	55749.70	1.20%	2	53879.10	52648	54199	55036	56587	57424
Sensex	Daily	82755.51	0.85%	4	82148.15	82161	82458	82637	82934	83113
	Weekly	82408.17	1.59%	1	82113.60	80504	81456	81974	82926	83445
	Monthly	81451.01	1.51%	1	80320.40	77296	79374	81046	83123	84796

Gainers - Losers (Nifty 500 Stocks)

Gainers				Losers			
Company Name	Last Price	% Gain	Volume	Company Name	Last Price	% Loss	Volume
Global Vectra	258.08	20	296913	Winy Immi	140.5	-8.17	7000
Indifra	22.7	19.79	62000	Centum Electron	2160.8	-6.62	41296
Kirloskar Bros	2161	16.35	4349744	Srivari Spices	148.75	-5.82	61000
Jai Balaji Ind	117.17	15.85	12912093	Garden Reach Sh	3003.1	-5.65	4433297
SOLARA ACTIVE P	635.4	15.53	2350388	Kundan Edifice	118	-5.6	2400
Network 18	61.82	15.21	145949553	Nephro Care Ind	120.1	-5.43	52800
Sammaan Capital	143.5	15.09	74484468	Ideaforge Tech	601.4	-5.07	1422462



Nifty Daily chart with RSI indicator



BankNifty Daily chart with RSI indicator



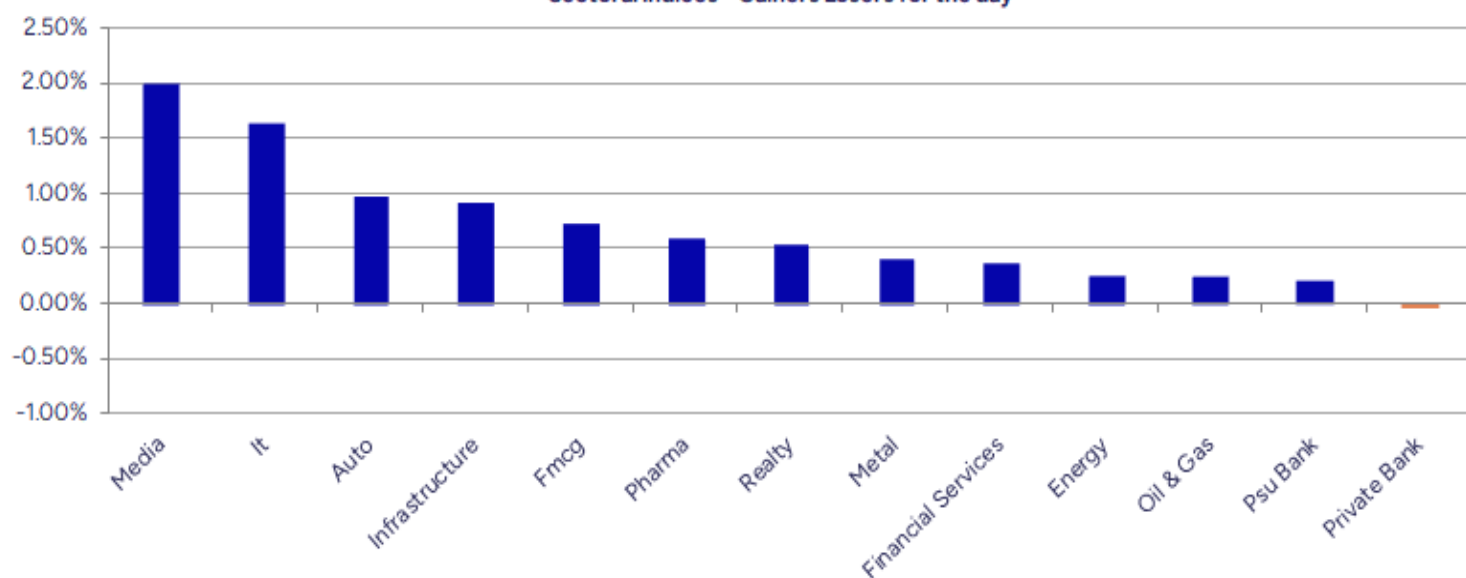
Breakouts - Cross above 200 DMA			
Company Name	LCP	Change %	200 DMA
Kirloskar Bros	2161	16.30	1858.13
Vardhman Steels	267.15	8.70	245.76
Embassy Develop	127	4.88	121.09
Onward Tech	330.15	4.80	315.03
Supreme Infra	112.41	4.75	107.31
Bajel Projects	233.64	4.73	223.08
Sammaan Capital	143.5	3.90	138.12
Thomas Scott	333.35	3.90	320.85
Suprajit Eng	464.5	3.85	447.27
Muthoot Cap	325.75	3.82	313.76
Guj Ind Power	209.65	3.70	202.17
Narmada Agrobias	18.59	3.45	17.97
Credo Brands Ma	168.48	3.42	162.91
SHAH METACORP	4.15	3.23	4.02
CESC	172.4	3.02	167.34
Aarti Ind	470.6	2.71	458.19
Zuari Agro Chem	213.31	2.61	207.88
Gulf Oil Lubric	1217.4	2.61	1186.4

* Stocks crossing above its Simple Moving Average (200DMA)

Breakdown - Cross below 200 DMA			
Company Name	LCP	Change %	200 DMA
Gayatri Rubbers	418.6	-2.35	428.67
Onelife Capital	14.29	-1.45	14.5
Lloyds Luxuries	92.7	-1.35	93.97
Abhishek	66.15	-1.33	67.04
V-Mart Retail	878.7	-1.05	888.03
FDC	471.75	-0.89	476
CG Power	676.6	-0.85	682.38
Kapston Service	239.57	-0.69	241.24
Supriya Lifesci	670.95	-0.67	675.47
Phantom Digital	255.05	-0.60	256.58
Max Estates	507.8	-0.59	510.79
Wonder Elect.	161.54	-0.49	162.33
Krebs Biochem	86.22	-0.35	86.52
ABSLLIQUID	999.99	0.00	1000

* Stocks crossing below its Simple Moving Average (200DMA)

Sectoral Indices - Gainers Losers for the day



Stocks witnessing a volume surge as compared to their 5 day average volume

Watch out for the stocks that have seen a huge spurt in its share price over the last three days

Volume Shockers - NSE					
Company name	LCP	% Chg	Volume	Avg Vol *	% Chg
Diamond Power	116.75	6.23	11584413	6800	170249
Jai Balaji Ind	115.8	14.49	12797619	54390	23429
Bajaj Consumer	207.55	2.43	14167100	256741	5418
Sky Gold	325.6	3.45	1141022	25989	4290
Global Vectra	258.08	20	296711	7319	3954
Balaji Amines	1677.4	12.57	2515799	63785	3844
Gallantt Ispat	544.1	2.53	1113834	33914	3184
Kirloskar Bros	2188	17.8	4300604	137380	3030
Laxmi Goldorna	682	-1.49	33384	1094	2952
SOLARA ACTIVE P	633.3	15.15	2330569	81733	2751
Exicom Tele-Sys	202.4	11.22	4486930	189088	2273
United Polyfab	19.4	2.37	335137	14703	2179
Remsons Ind	140.15	0.08	464134	21094	2100
Astec Life	888	7.72	381135	17955	2023
Deccan Cements	897	9.62	327341	15432	2021
Shyam Telecom	15.46	-5.04	29991	1416	2018
Mukand	142.2	3.49	4487150	220014	1939
Tamil Telecom	11.78	1.82	190084	10569	1698
Kaya	402.55	4.99	108294	6240	1635
BEW Engineering	168.8	0.21	19500	1125	1633

* the Average Volume of last 5 days

Price Shockers - NSE				
Company name	LCP	Prv Close	% Chg	Volume
Indifra	22.7	17.5	29.71	62000
Foods and Inns	124.59	99.53	25.18	2075855
ABM Inter	58.52	46.9	24.78	13954
Mukand	142.73	114.93	24.19	4507433
Bajaj Consumer	207.29	169.25	22.48	14298517
Tamil Telecom	11.93	9.8	21.73	199718
Deccan Cements	894.1	736.35	21.42	331308
Sammaan Capital	143.5	118.88	20.71	74484468
Balaji Amines	1672.7	1386.6	20.63	2531595
Oil Country	92.86	77.34	20.07	238450
Kirloskar Bros	2161	1801.2	19.98	4349744
Network 18	61.82	52.26	18.29	145949553
Astec Life	888.2	757.1	17.32	384297
Jai Balaji Ind	117.17	100.29	16.83	12912093
Innovana	516.2	442.6	16.63	37511
63 Moons Tech	1000.55	861.3	16.17	1162768
Ishan Dyes	51.96	44.76	16.09	47633
Sri Adhikari	832.55	719.25	15.75	847
Supreme Infra	112.41	97.12	15.74	7438
Kaya	402.55	347.95	15.69	108304

* the % price rise of the last 3 days

Symbol	LTP	Chng	% Chng	Volume (lacs)	Turnover (crs.)	52w High	Diff with 52w H	52w Low	Diff with 52w L	365 days % chng	30 days % chng
NIFTY 50	25244.75	200.40	0.80%	2605.73	22984.47	26277.35	3.93%	21743.65	16.10%	0.77%	6.40%
ADANIENT	2530.00	24.40	0.97%	9.21	232.90	3258.00	22.34%	2025.00	24.94%	-1.35%	-21.57%
ADANIPTS	1397.80	8.30	0.60%	19.16	266.90	1604.95	12.91%	995.65	40.39%	-0.42%	-4.85%
APOLLOHOSP	7034.00	28.00	0.40%	3.79	266.34	7545.35	6.78%	6001.00	17.21%	-0.83%	11.92%
ASIANPAINT	2280.00	4.70	0.21%	8.07	184.20	3394.90	32.84%	2124.75	7.31%	-1.74%	-21.43%
AXISBANK	1211.00	-10.20	-0.84%	42.29	514.20	1339.65	9.60%	933.50	29.73%	0.92%	-0.56%
BAJAJ-AUTO	8390.00	13.00	0.16%	2.76	231.79	12774.00	34.32%	7089.35	18.35%	-4.16%	-14.04%
BAJAJFINSV	2014.40	5.20	0.26%	9.98	200.81	2135.00	5.65%	1523.25	32.24%	-1.34%	26.55%
BAJFINANCE	926.00	9.50	1.04%	66.24	612.08	978.80	5.39%	642.50	44.12%	-90.08%	-87.06%
BEL	406.30	-12.20	-2.92%	290.25	1191.40	426.50	4.74%	240.25	69.12%	9.04%	35.11%
BHARTIARTL	1963.80	30.20	1.56%	41.53	813.69	1970.00	0.31%	1389.35	41.35%	5.56%	36.19%
CIPLA	1509.00	6.60	0.44%	10.33	155.76	1702.05	11.34%	1335.00	13.03%	1.23%	-0.13%
COALINDIA	391.80	-0.85	-0.22%	46.72	183.42	543.55	27.92%	349.25	12.18%	-2.20%	-17.11%
DRREDDY	1340.10	2.80	0.21%	8.33	111.66	1421.49	5.73%	1020.00	31.38%	8.71%	-77.91%
EICHERMOT	5576.50	-52.50	-0.93%	4.49	251.31	5906.50	5.59%	4508.75	23.68%	4.24%	15.56%
GRASIM	2840.00	59.10	2.13%	9.48	266.51	2877.75	1.31%	2276.95	24.73%	4.57%	10.57%
HCLTECH	1713.90	22.10	1.31%	13.08	224.11	2012.20	14.82%	1302.75	31.56%	2.65%	17.42%
HDFCBANK	1980.00	19.10	0.97%	92.03	1819.52	1996.30	0.82%	1588.05	24.68%	1.41%	17.25%
HDFCLIFE	786.00	6.30	0.81%	27.33	214.19	791.10	0.64%	575.65	36.54%	-0.09%	34.55%
HEROMOTOCO	4297.90	5.40	0.13%	4.12	177.94	6246.25	31.19%	3344.00	28.53%	-0.38%	-22.30%
HINDALCO	672.10	2.70	0.40%	55.33	371.87	772.65	13.01%	546.45	22.99%	2.97%	-2.31%
HINDUNILVR	2277.00	13.90	0.61%	10.47	238.71	3035.00	24.98%	2136.00	6.60%	-4.07%	-7.33%
ICICIBANK	1424.50	0.40	0.03%	75.27	1071.14	1471.60	3.20%	1152.65	23.58%	-1.77%	21.71%
INDUSINDBK	829.30	-2.65	-0.32%	49.47	411.66	1521.00	45.48%	606.00	36.85%	4.86%	-44.18%
INFY	1612.50	30.90	1.95%	78.13	1256.99	2006.45	19.63%	1307.00	23.37%	1.07%	3.57%
ITC	416.10	1.75	0.42%	99.47	414.67	528.50	21.27%	390.15	6.65%	-5.03%	-2.11%
JIOFIN	303.50	2.70	0.90%	118.52	359.63	363.00	16.39%	198.65	52.78%	6.76%	-15.35%
JSWSTEEL	1024.65	17.65	1.75%	20.29	206.77	1074.90	4.67%	854.15	19.96%	-0.15%	7.66%
KOTAKBANK	2195.00	-28.60	-1.29%	35.75	788.79	2301.90	4.64%	1679.05	30.73%	5.85%	25.45%
LT	3623.90	19.10	0.53%	14.05	508.98	3963.50	8.57%	2965.30	22.21%	0.14%	2.07%
M&M	3218.00	67.90	2.16%	20.79	664.23	3270.95	1.62%	2425.00	32.70%	4.56%	8.04%
MARUTI	12760.00	149.00	1.18%	3.17	403.32	13680.00	6.73%	10725.00	18.97%	1.27%	3.51%
NESTLEIND	2405.00	39.20	1.66%	11.50	276.96	2778.00	13.43%	2110.00	13.98%	-2.01%	-6.49%
NTPC	330.55	0.60	0.18%	179.63	595.06	448.45	26.29%	292.80	12.89%	-4.25%	-9.04%
ONGC	241.80	-2.12	-0.87%	130.56	317.47	345.00	29.91%	205.00	17.95%	-0.13%	-9.63%
POWERGRID	290.80	4.85	1.70%	108.39	313.79	366.25	20.60%	247.30	17.59%	-4.08%	-14.12%
RELIANCE	1467.60	16.80	1.16%	75.25	1104.27	1608.80	8.78%	1114.85	31.64%	1.68%	-49.68%
SBILIFE	1846.30	3.30	0.18%	9.91	182.44	1936.00	4.63%	1372.55	34.52%	2.46%	26.86%
SBIN	800.00	4.60	0.58%	65.28	522.19	899.00	11.01%	680.00	17.65%	0.62%	-4.48%
SHRIRAMFIN	674.75	-1.30	-0.19%	32.12	216.78	730.45	7.63%	493.35	36.77%	2.46%	-76.54%
SUNPHARMA	1669.00	7.30	0.44%	13.73	229.41	1960.35	14.86%	1475.05	13.15%	-1.30%	11.19%
TATACONSUM	1125.00	17.30	1.56%	15.64	176.26	1250.10	10.01%	882.90	27.42%	-2.90%	0.52%
TATAMOTORS	674.45	0.80	0.12%	104.56	706.34	1179.00	42.79%	535.75	25.89%	-6.21%	-29.69%
TATASTEEL	156.33	1.54	0.99%	182.40	284.99	179.00	12.66%	122.62	27.49%	-5.02%	-13.02%
TCS	3443.00	52.60	1.55%	17.58	601.54	4592.25	25.03%	3056.05	12.66%	-3.53%	-11.17%
TECHM	1703.60	26.50	1.58%	14.16	241.09	1807.70	5.76%	1209.40	40.86%	6.13%	19.65%
TITAN	3655.00	129.00	3.66%	26.98	980.07	3867.00	5.48%	2925.00	24.96%	-1.50%	3.33%
TRENT	6126.00	68.50	1.13%	8.16	498.78	8345.00	26.59%	4488.00	36.50%	11.44%	12.26%
ULTRACEMCO	11725.00	146.00	1.26%	2.53	296.55	12339.00	4.98%	10047.85	16.69%	-1.42%	7.35%
WIPRO	269.15	4.18	1.58%	53.32	143.17	324.60	17.08%	228.00	18.05%	7.12%	-45.99%
ETERNAL	258.60	3.53	1.38%	264.13	681.81	304.70	15.13%	191.95	34.72%	7.38%	#VALUE!

Disclaimer / Disclosures

ANALYST CERTIFICATION

I, Mrs. Vaishali Parekh B.com, Research Analyst, author and the name subscribed to this report, hereby certify that all of the views expressed in this research report accurately reflect our views about the subject issuer(s) or securities. We also certify that no part of our compensation was, is, or will be directly or indirectly related to the specific recommendation(s) or view(s) in this report.

Terms & conditions and other disclosures:

Prabhudas Lilladher Pvt. Ltd, Mumbai, India (hereinafter referred to as "PL") is engaged in the business of Stock Broking, Portfolio Manager, Depository Participant and distribution for third party financial products. PL is a subsidiary of Prabhudas Lilladher Advisory Services Pvt Ltd. which has its various subsidiaries engaged in business of commodity broking, investment banking, financial services (margin funding) and distribution of third party financial/other products, details in respect of which are available at www.plindia.com

This document has been prepared by the Research Division of PL and is meant for use by the recipient only as information and is not for circulation. This document is not to be reported or copied or made available to others without prior permission of PL. It should not be considered or taken as an offer to sell or a solicitation to buy or sell any security.

The information contained in this report has been obtained from sources that are considered to be reliable. However, PL has not independently verified the accuracy or completeness of the same. Neither PL nor any of its affiliates, its directors or its employees accepts any responsibility of whatsoever nature for the information, statements and opinion given, made available or expressed herein or for any omission therein.

Recipients of this report should be aware that past performance is not necessarily a guide to future performance and value of investments can go down as well. The suitability or otherwise of any investments will depend upon the recipient's particular circumstances and, in case of doubt, advice should be sought from an independent expert/advisor.

Either PL or its affiliates or its directors or its employees or its representatives or its clients or their relatives may have position(s), make market, act as principal or engage in transactions of securities of companies referred to in this report and they may have used the research material prior to publication.

PL may from time to time solicit or perform investment banking or other services for any company mentioned in this document.

PL is registered as Research Analyst under Securities and Exchange Board of India (Research Analysts) Regulations, 2014 PL submits that no material disciplinary action has been taken on us by any Regulatory Authority impacting Equity Research Analysis activities.

PL or its research analysts or its associates or his relatives do not have any financial interest in the subject company.

PL or its research analysts or its associates or his relatives do not have actual/beneficial ownership of one per cent or more securities of the subject company at the end of the month immediately preceding the date of publication of the research report.

PL or its research analysts or its associates or his relatives do not have any material conflict of interest at the time of publication of the research report.

PL or its associates might have received compensation from the subject company in the past twelve months.

PL or its associates might have managed or co-managed public offering of securities for the subject company in the past twelve months or mandated by the subject company for any other assignment in the past twelve months.

PL or its associates might have received any compensation for investment banking or merchant banking or brokerage services from the subject company in the past twelve months.

PL or its associates might have received any compensation for products or services other than investment banking or merchant banking or brokerage services from the subject company in the past twelve months PL or its associates might have received any compensation or other benefits from the subject company or third party in connection with the research report.

PL encourages independence in research report preparation and strives to minimize conflict in preparation of research report. PL or its analysts did not receive any compensation or other benefits from the subject Company or third party in connection with the preparation of the research report. PL or its Research Analysts do not have any material conflict of interest at the time of publication of this report.

It is confirmed that Mrs.Vaishali Parekh B.com, Research Analyst of this report has not received any compensation from the companies mentioned in the report in the preceding twelve months compensation of our Research Analysts is not based on any specific merchant banking, investment banking or brokerage service transactions.

The Research analysts for this report certifies that all of the views expressed in this report accurately reflect his or her personal views about the subject company or companies and its or their securities, and no part of his or her compensation was, is or will be, directly or indirectly related to specific recommendations or views expressed in this report.

The research analysts for this report has not served as an officer, director or employee of the subject company PL or its research analysts have not engaged in market making activity for the subject company

Our sales people, traders, and other professionals or affiliates may provide oral or written market commentary or trading strategies to our clients that reflect opinions that are contrary to the opinions expressed herein, and our proprietary trading and investing businesses may make investment decisions that are inconsistent with the recommendations expressed herein. In reviewing these materials, you should be aware that any or all of the foregoing, among other things, may give rise to real or potential conflicts of interest.

PL and its associates, their directors and employees may (a) from time to time, have a long or short position in, and buy or sell the securities of the subject company or (b) be engaged in any other transaction involving such securities and earn brokerage or other compensation or act as a market maker in the financial instruments of the subject company or act as an advisor or lender/borrower to the subject company or may have any other potential conflict of interests with respect to any recommendation and other related information and opinions.