



Solid Research
Solid Relationships

Fundamental Outlook

Global Market Setup



- **US markets closed higher with S&P 500 recorded fresh high as** signs of progress on further trade deals offset data showing that private payrolls fell for the first in more than two years.
- US has reached a trade agreement with Vietnam, notching a third deal ahead of July 9 deadline when the pause of reciprocal tariffs are due to resume.
- **Dow Jones ended flat with a loss of -0.02%, Nasdaq gained by 1% and S&P 500 closed higher with a gain of 0.5%**
- **European markets closed with a gain of 0.5-1%**
- Dow futures is currently trading **flat with a gain of 0.1% higher (30 points higher)**
- **Most Asian markets are mostly trading on a flat to negative note**

Global Cues: Flattish

Indian Market Setup



- **Indian equities** opened flat but slipped into negative territory amid selling pressure, following US President Trump's firm stance on the July 9 tariff deadline.
- **Nifty50** ended **lower by 88 points at 25,453 (-0.4%)**.
- **Nifty Midcap100 and Smallcap100** **were down by 0.1% and 0.4% respectively**.
- **FII**s: **-₹1,562cr**; **DII**s **+₹3,037cr**
- **GIFT Nifty** is trading with a gain of **about 50 points**

Domestic Cues: Flat to Positive

Stocks in News



DMart's 1QFY26: Standalone revenue at INR159b, grew 16.2% YoY (slightly weaker vs. our pre-quarter estimate of ~18% YoY), driven by 14% YoY store addition and likely mid to high single digit SSSG.

Impact: **Neutral**

Value retailers such as V-Mart, V2 Retail and Style Baazar saw slight moderation in SSSG in 1QFY26 due to the shift in Eid to 4QFY25 (vs. 1Q in FY25). However, adjusted for the same, the performance remains robust driven by strong store additions. V2 Retail continues to outperform peers, driven by its higher store additions and sales per square feet

Impact: **Positive for V2 retail**

Shakti Pumps board approves QIP to raise funds. Floor price of ₹965.96 is 2.3% premium to yesterday close. May offer discount of up to 5% on floor price. Board plans to raise Rs400cr.

Impact: **Positive**

IPO opening: Indogulf cropsciences. Issue price is Rs111

Fundamental Actionable Idea



3-Jul-25

LT Foods

CMP ₹ 495, Buy, MTF Stock

- U.S. President lashed out against Japan over the country's alleged unwillingness to buy American-grown rice.
- India and Japan are 2 largest rice growing and exporting countries and we expect export of Basmati rice to pick up from India.
- LT foods expects consolidated revenue of INR100b in FY26 (including Golden Star consolidation expected in 2HFY26). EBITDA margin is targeted at ~13%. ROE, after acquisition synergies, is expected at ~20%.
- We estimate a CAGR of 16%/23%/27% in revenue/EBITDA/adj. PAT over FY25FY27.

View: Buy

Fundamental Actionable Idea



3-Jul-25

Ultratech Cement

CMP ₹12,436, TP: ₹13,900; Upside: 12%, Buy, MTF Stock

- **Higher Government capex in June 25 quarter is likely to be positive for cement makers.**
- Recently commissioned its second cement grinding mill with a capacity of 1.8 MTPA in Madhya Pradesh, as part of its ongoing expansion plan. With this commissioning, its consolidated domestic grey cement capacity now stands at 186.86 MTPA, and its global cement capacity stands at 192.26 MTPA.
- The company remains focused on capitalizing the infrastructure-led demand recovery, while recent price increases and cost-saving initiatives drive improvement in profitability.
- We estimate a CAGR of 15%/29%/34% in consolidated revenue/EBITDA/PAT over FY25-FY27, aided by inorganic growth. We estimate its consolidated volume CAGR at ~13% and EBITDA/t of INR1120/INR1210 in FY26/FY27 vs. INR924 in FY25. UTCCEM is estimated to continue to gain market share with its robust capacity expansion and increasing scale of operations.

View: Buy

Upcoming Corporate Actions



3-Jul-25

Company	Bonus Ratio	Ex-Date
CONCOR	1:4	04-07-2025

Company	Div/Sh (₹)	Ex-Date
M&M	25.3	04-07-2025
Axis Bank	1.0	04-07-2025
Nestle	10.0	04-07-2025
Tech Mahindra	30.0	04-07-2025
Max Healthcare	1.5	04-07-2025

Focus Investment Ideas



All Stocks Available in MTF

Duration : 1 Year Horizon

Stock Name	Rating	CMP (Rs)	Target (Rs)	Upside (%)
Prince Pipes	Buy	370	500	35%
Time Technoplast	Buy	450	578	28%
Niva Bupa	Buy	82	100	22%
ICICI Bank	Buy	1,428	1,650	16%
Hindustan Aeronautics	Buy	4,890	5,650	16%

Technical Outlook

Nifty Technical Outlook



3-Jul-25

NIFTY (CMP : 25453) Nifty immediate support is at 25250 then 25100 zones while resistance at 25650 then 25750 zones. Now it has to cross and hold above 25500 zones to witness a bounce towards 25650 and 25750 zones while supports are slightly shifting lower at 25250 then 25100 zones.

1-Nifty50 - 02/07/25



Investment in securities market are subject to market risks, read all the related documents carefully before investing.

Bank Nifty Technical Outlook



3-Jul-25

BANK NIFTY (CMP : 56999) Bank Nifty support is at 56750 then 56500 zones while resistance at 57250 then 57500 zones. Now till it holds below 57250 zones further profit booking could be seen towards 56750 then 56500 levels while on the upside hurdle is seen at 57250 then 57500 zones.

1-Niftybank - 02/07/25



Investment in securities market are subject to market risks, read all the related documents carefully before investing.

Sectoral Performance

3-Jul-25

	Closing	% Change			
Indices	02-Jul	1-day	2-days	3-days	5-days
NIFTY 50	25453	-0.35%	-0.25%	-0.72%	0.83%
NIFTY BANK	56999	-0.80%	-0.55%	-0.77%	0.67%
NIFTY MIDCAP 100	59667	-0.14%	-0.12%	0.48%	1.33%
NIFTY SMALLCAP 250	17693	-0.39%	-0.59%	0.29%	1.36%
NIFTY FINANCIAL SERVICES	26862	-0.97%	-1.15%	-1.76%	0.04%
NIFTY PRIVATE BANK	28106	-0.65%	-0.52%	-1.40%	-0.07%
NIFTY PSU BANK	7194	-0.83%	-0.12%	2.54%	3.46%
NIFTY IT	38879	0.12%	-0.18%	0.14%	-0.43%
NIFTY FMCG	54440	-0.12%	-0.81%	-1.21%	-0.56%
NIFTY OIL & GAS	11838	-0.17%	0.32%	0.03%	3.10%
NIFTY PHARMA	22111	0.32%	0.33%	0.83%	1.40%
NIFTY AUTO	23900	0.32%	0.11%	-0.45%	0.30%
NIFTY METAL	9699	1.41%	1.72%	1.26%	3.97%
NIFTY REALTY	970	-1.44%	-1.67%	-2.40%	-4.87%
NIFTY INDIA DEFENCE	8864	-0.52%	-0.08%	0.86%	2.10%
NIFTY CPSE	6596	-0.69%	-0.62%	-0.38%	0.97%

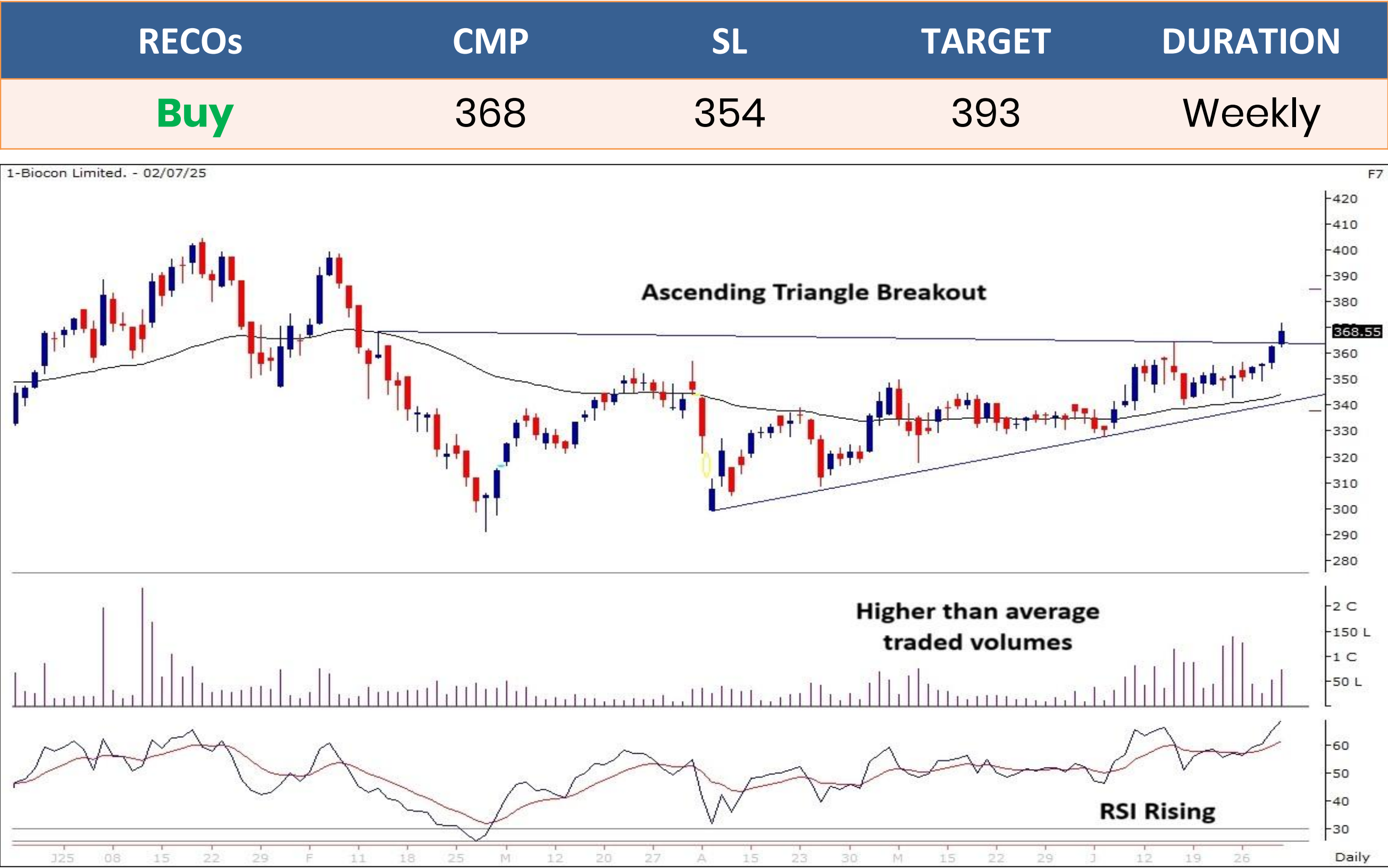
Investment in securities market are subject to market risks, read all the related documents carefully before investing.

BIOCON

(Mcap ₹ 49,274 Cr.)

F&O Stock, MTF Stock

- Ascending triangle breakout.
- Strong bullish candle.
- Respecting 50 DEMA.
- Rising volumes visible.
- RSI momentum indicator rising.
- We recommend to buy the stock at CMP ₹368 with a SL of ₹354 and a TGT of ₹393.



Stocks On Radar

3-Jul-25

TATASTEEL

(CMP: 165, Mcap ₹ 2,07,077 Cr.)

F&O Stock, MTF Stock

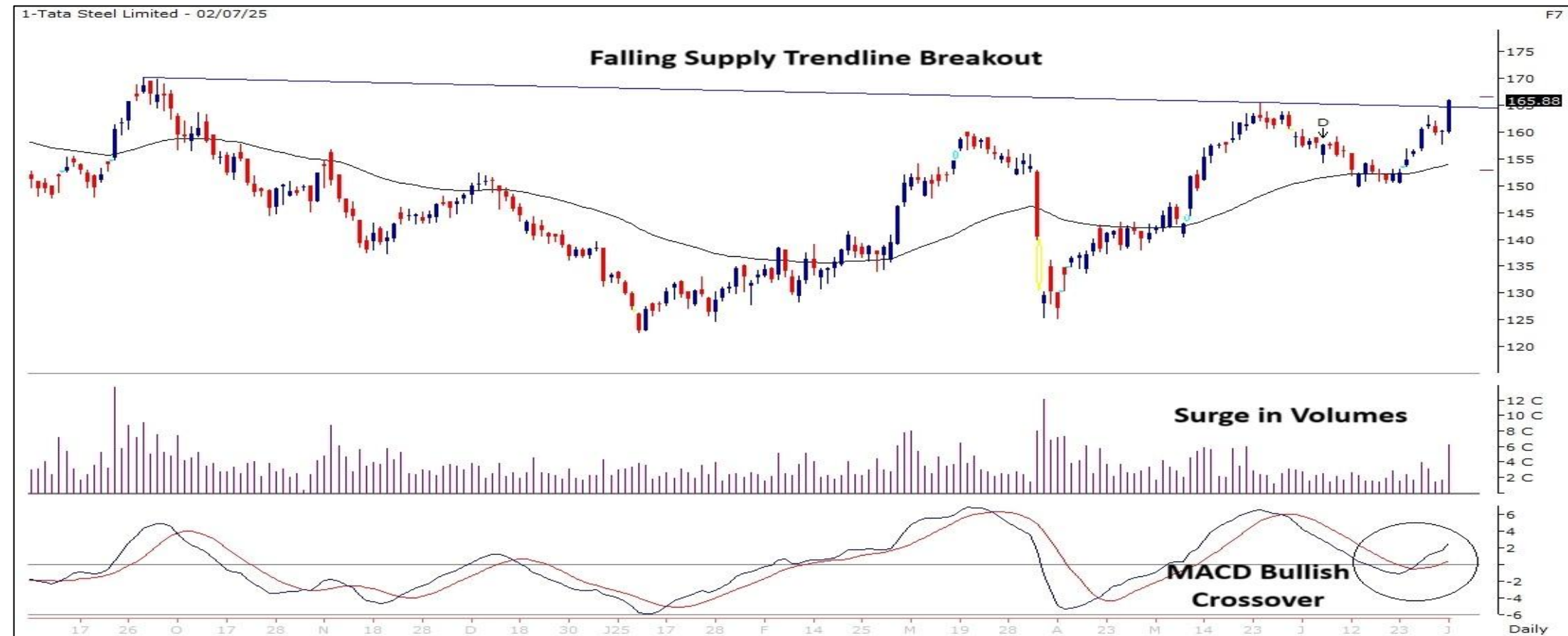
- Falling supply trendline breakout.
- Strong bullish candle.
- Surge in traded volumes visible.
- MACD indicator giving bullish crossover.
- Immediate support at 159.

MGL

(CMP: 1509, Mcap ₹ 14,911 Cr.)

F&O Stock, MTF Stock

- Range breakout above 1525.
- Respecting 20 DEMA.
- High volumes on up moves.
- MACD momentum indicator positively placed.
- Immediate support at 1454.



Derivative Outlook

Derivative Outlook



3-Jul-25

- Nifty July future closed at 25546.10 with a premium of 92.70 point v/s 101.50 point premium in the last session.
- Nifty Put/Call Ratio (OI) decreased from 0.88 to 0.78 level.
- India VIX decreased by 0.66% to 12.44 level.

FII Cash & Derivative Activity



3-Jul-25

- FIIs on Derivatives front : Short built up in index futures, call selling and put unwinding in index options.
- In the cash market : FIIs were net sellers to the tune of 1543 Cr while DIIs were net buyers worth 2763 Cr.
- FIIs long short ratio : decreased to 33.40%

INSTITUTIONAL DERIVATIVES ACTIVITY

Change in OI in Future Index Long (in contracts)					Change in OI in Future Index Short (in contracts)					Change in OI in Future Stock Long (in contracts)					Change in OI in Future Stock Short (in contracts)				
Date	Client	DII	FII	Pro	Date	Client	DII	FII	Pro	Date	Client	DII	FII	Pro	Date	Client	DII	FII	Pro
26-Jun-25	-34947	444	8452	-30762	26-Jun-25	1933	2652	-63451	2053	26-Jun-25	-195288	-150988	-164186	-197774	26-Jun-25	-82196	-214666	-211891	-199483
27-Jun-25	4079	2382	799	3054	27-Jun-25	6779	1700	-650	2485	27-Jun-25	29673	6260	14611	28373	27-Jun-25	18622	54520	-16727	22502
30-Jun-25	-9645	-204	-4668	11264	30-Jun-25	-2886	-1500	-63	1196	30-Jun-25	46489	2731	-23182	23365	30-Jun-25	4939	13557	24721	6186
1-Jul-25	-2575	-326	2161	3746	1-Jul-25	1470	0	2744	-1208	1-Jul-25	46751	3785	91	4784	1-Jul-25	5716	20823	21561	7311
2-Jul-25	5065	-1117	-3687	-9588	2-Jul-25	-7048	-2679	6828	-6428	2-Jul-25	15921	864	7366	-7617	2-Jul-25	3126	13123	-4652	4937

Change in OI in Option Index Call Long (in contracts)					Change in OI in Option Index Call Short (in contracts)					Change in OI in Option Index Put Long (in contracts)					Change in OI in Option Index Put Short (in contracts)				
Date	Client	DII	FII	Pro	Date	Client	DII	FII	Pro	Date	Client	DII	FII	Pro	Date	Client	DII	FII	Pro
26-Jun-25	-1440282	0	-400117	-822086	26-Jun-25	-1666670	0	-316000	-679816	26-Jun-25	-1445485	-10204	-443344	-697501	26-Jun-25	-1603152	0	-339224	-654159
27-Jun-25	396244	0	40335	242037	27-Jun-25	478416	0	70728	129473	27-Jun-25	567453	3400	26292	184394	27-Jun-25	535376	0	62787	183377
30-Jun-25	823367	0	19429	317746	30-Jun-25	750862	0	66254	343427	30-Jun-25	-48609	0	-2710	6923	30-Jun-25	1517	0	20391	-66305
1-Jul-25	222991	0	32774	-78962	1-Jul-25	179702	0	-1403	-1497	1-Jul-25	205872	0	94417	119737	1-Jul-25	311672	0	-22404	130759
2-Jul-25	482637	0	7703	128574	2-Jul-25	290377	0	99225	229313	2-Jul-25	45715	-800	-12519	65656	2-Jul-25	3129	0	-21365	116287

Today's OI Changes (in contracts)										Cumulative Positions (in contracts)									
Clients	Index Futures			Index Calls			Index Puts			Clients	Index Futures			Index Calls			Index Puts		
	Long	Short	Net	Long	Short	Net	Long	Short	Net		Long	Short	Net	Long	Short	Net	Long	Short	Net
Clients	5065	-7048	12113	482637	290377	192260	45715	3129	42586	Clients	141425	123767	17658	2917744	2946503	-28759	2155281	2397570	-242289
DII	-1117	-2679	1562	0	0	0	-800	0	-800	DII	76861	45420	31441	70	0	70	17583	0	17583
FII	-3687	6828	-10515	7703	99225	-91522	-12519	-21365	8846	FII	49508	98729	-49221	415581	476704	-61123	472715	329703	143012
Pro	-9588	-6428	-3160	128574	229313	-100739	65656	116287	-50631	Pro	33577	33455	122	1208049	1118238	89811	1018219	936524	81695

FII Derivatives Activity		Index Long Short Ratio	
Segment	Net Amount (in Cr)		
Index Futures	-2057	Clients	53.33%
Index Options	-16628	DII	62.86%
Stock Futures	714	FII	33.40%
Stock Options	266	Pro	50.09%

Institutions Activity in Cash Segment - Net Value (in Cr)							
	2-Jul-25	1-Jul-25	30-Jun-25	27-Jun-25	26-Jun-25	25-Jun-25	24-Jun-25
FIIs	-1542.56	-1970.03	-787.62	1504.93	12692.56	-2306.1	-2973.24
DIIs	2763.07	725.6	3383.01	-765.82	-421.34	2018.14	4303.08



Investments in securities markets are subject to market risks.
Please read all related documents carefully.

Investment in securities market are subject to market risks, read all the related documents carefully before investing.

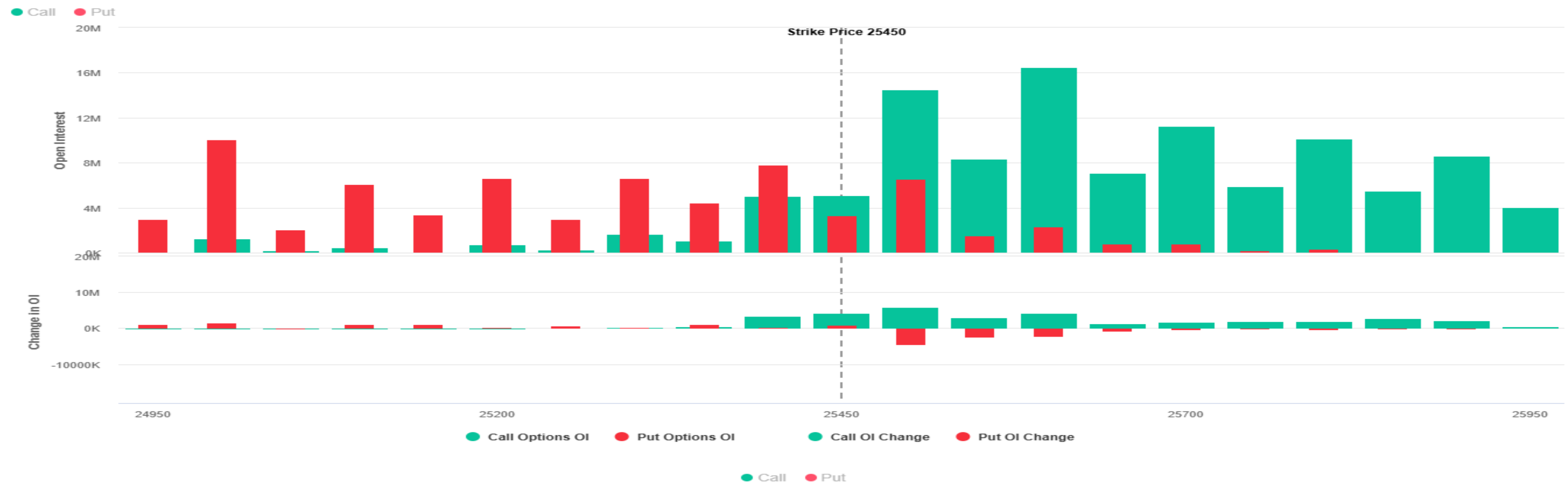
Nifty : Option Data



3-Jul-25

- Maximum Call OI is at 25500 then 25600 strike while Maximum Put OI is at 25400 then 25000 strike.
- Call writing is seen at 25500 then 25600 strike while Put writing is seen at 25450 then 25400 strike.
- Option data suggests a broader trading range in between 25000 to 26000 zones while an immediate range between 25200 to 25700 levels.

Nifty 50 OI Chart(03 Jul 2025)



Investment in securities market are subject to market risks, read all the related documents carefully before investing.

Option - Buying side strategy



3-Jul-25


Index	Single Leg Buying	Multi Leg Strategy
Nifty (Weekly)	25400 CE if it cross & holds above 25500	Bull Call Spread (Buy 25450 CE and Sell 25550 CE) at net premium cost of 30-35 points
Sensex (Weekly)	84000 CE if it cross & holds above 83600	Bull Call Spread (Buy 83500 CE and Sell 83700 CE) at net premium cost of 80-90 points
Bank Nifty (Monthly)	56000 PE till it holds below 57250	Bear Put Spread (Buy 56700 PE and Sell 56200 PE) at net premium cost of 170-190 points

Option - Selling side strategy



3-Jul-25

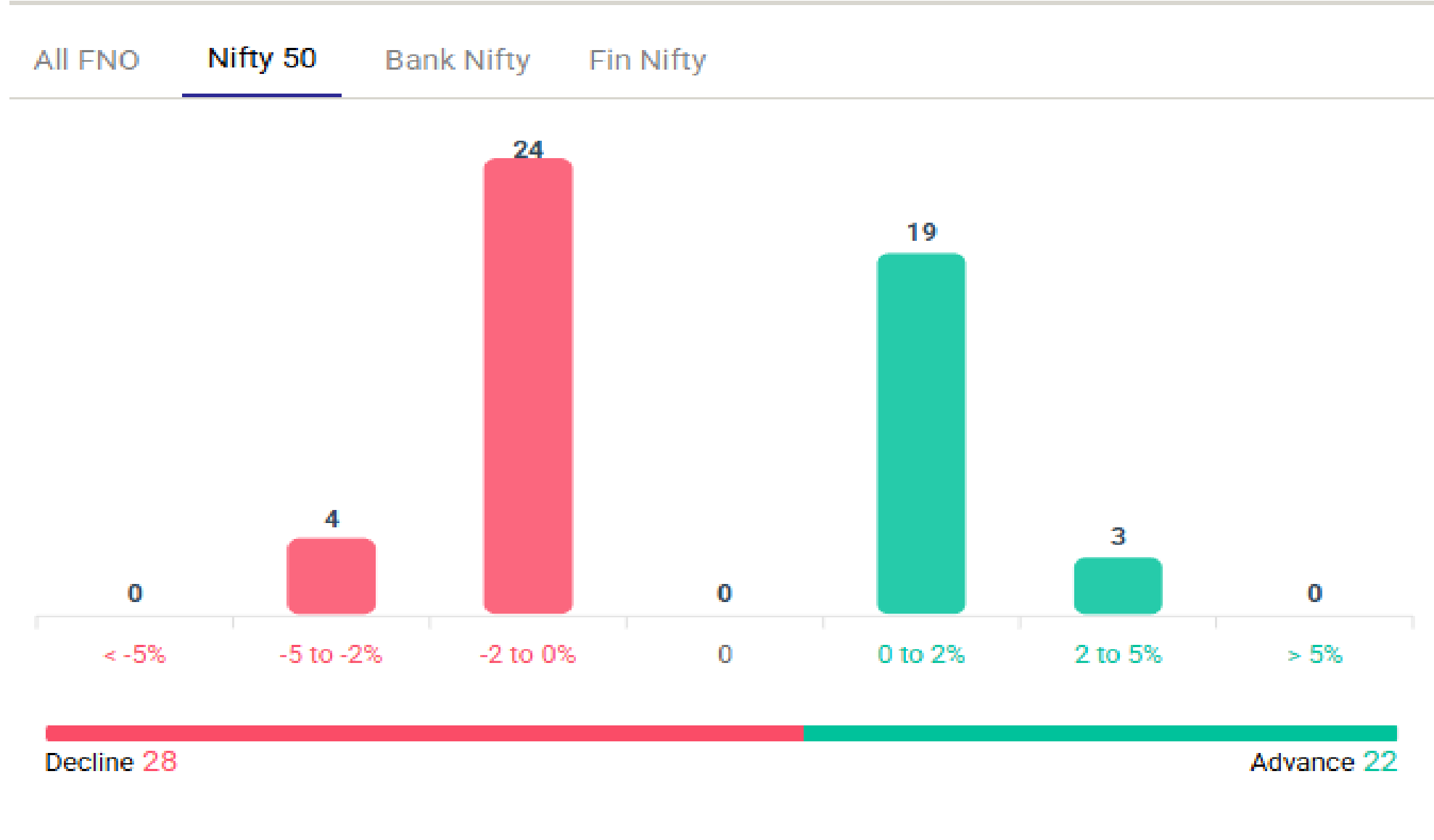
Index	Writing
Nifty (Weekly)	25250 PE & 25650 CE
Sensex (Weekly)	80200 PE & 86300 CE
Bank Nifty (Monthly)	54000 PE & 60000 CE

Weekly Option Range for Option Writers based on Different Confidence Band								
Date		3-Jul-25	Weekly Expiry		3-Jul-25	Days to weekly expiry		1
								
Nifty		25453	India VIX		12.4			
Confidence Band	Probability	% Away From Spot	Range				Total Premium (Put + Call)	Types of Trades
			Put	Premium	Call	Premium		
1.00	68%	± 0.6%	25300	19	25600	21	39	Aggressive
1.75	92%	± 0.8%	25250	12	25650	14	26	Conservative
2.00	95%	± 1.0%	25200	8	25700	10	18	Most Conservative
Date		3-Jul-25	Monthly Expiry		31-Jul-25	Days to weekly expiry		21
Bank Nifty		56999						
Confidence Band	Probability	% Away From Spot	Range				Total Premium (Put + Call)	Types of Trades
			Put	Premium	Call	Premium		
1.00	68%	± 3.0%	55300	230	58700	292	523	Aggressive
1.25	79%	± 3.7%	54900	179	59100	209	388	Less Aggressive
1.50	87%	± 4.4%	54500	137	59500	150	287	Neutral
1.75	92%	± 5.1%	54100	103	59900	108	211	Conservative
2.00	95%	± 5.8%	53700	82	60300	78	160	Most Conservative
Investments in securities markets are subject to market risks. Please read all related documents carefully.								

Nifty Advance Decline & Ban update

Stocks in Ban: RBLBANK

Advance & Decline

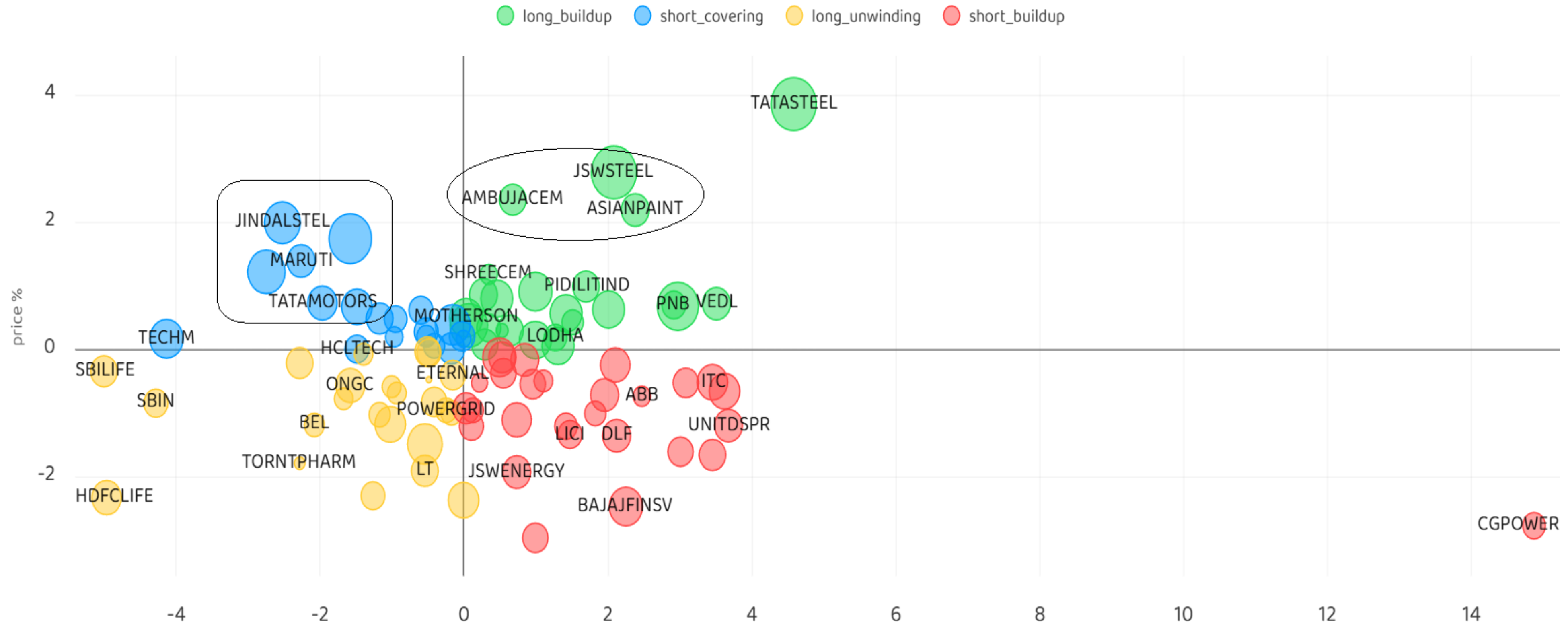


Investment in securities market are subject to market risks, read all the related documents carefully before investing.

Stocks : Derivatives Outlook



3-Jul-25



Investment in securities market are subject to market risks, read all the related documents carefully before investing.

Stocks : Options on radar



3-Jul-25

Stock	Call Strike	Trade	Buying Range	SL	TGT	Logic
JINDALSTEL	970 CE	Buy	35-36	31	44	Short Covering
MARUTI	12600 CE	Buy	281-282	130	382	Short Covering
DIVISLAB	6850 CE	Buy	209-211	185	260	Long Built up

Stock	Put Strike	Trade	Buying Range	SL	TGT	Logic
DRREDDY	1270 PE	Buy	33-34	29	42	Short Built up
LT	3600 PE	Buy	77-78	62	108	Long Unwinding

Investment in securities market are subject to market risks, read all the related documents carefully before investing.

Quant Outlook

Quant Intraday Sell Ideas



What is this?

Based on technical indicators this strategy gives 2 stocks that have a high likelihood to fall during the day (from open to close). This is an intraday Sell strategy which can provide a good cushioning during a black swan event.

Today's **Sell** Ideas:

Stock Names	Close Price	SL (1%)	TP (1%)
PHOENIXLTD (Sell)	1495.0	1510.0	1480.1
OIL (Sell)	435.9	440.3	431.5

What are the rules?

- Stock names will be given at market open (9:15 am)
- Recommended time to entry: between 9:15 to 9:30 am.
- Entry: We short 2 stocks daily (intraday)
- Exit: we will exit at 3:15 as this is an intraday call
- SL: is placed at 1% of the open.
- Book profit: At 1% fall since open.
- In special situations the book profit might be delayed if the stock is in free fall.

Siddhartha Khemka
Head – Retail Research

Chandan Taparua, CMT, CFTe
Head – Derivatives & Technical Analyst

Neil Jha
Head – Quant

Disclosures:

The following Disclosures are being made in compliance with the SEBI Research Analyst Regulations 2014 (herein after referred to as the Regulations).

Motilal Oswal Financial Services Ltd. (MOFSL) is a SEBI Registered Research Analyst having registration no. INH000000412. MOFSL, the Research Entity (RE) as defined in the Regulations, is engaged in the business of providing Stock broking services, Depository participant services & distribution of various financial products. MOFSL is a listed public company, the details in respect of which are available on www.motilaloswal.com. MOFSL is registered with the Securities & Exchange Board of India (SEBI) and is a registered Trading Member with National Stock Exchange of India Ltd. (NSE) and Bombay Stock Exchange Limited (BSE), Multi Commodity Exchange of India Limited (MCX) and National Commodity & Derivatives Exchange Limited (NCDEX) for its stock broking activities & is Depository participant with Central Depository Services Limited (CDSL) National Securities Depository Limited (NSDL),NERL, COMRIS and CCRL and is member of Association of Mutual Funds of India (AMFI) for distribution of financial products and Insurance Regulatory & Development Authority of India (IRDA) as Corporate Agent for insurance products. Details of associate entities of Motilal Oswal Financial Services Ltd. are available on the website at <http://onlinereports.motilaloswal.com/Dormant/documents/Associate%20Details.pdf>

Details of pending Enquiry Proceedings of Motilal Oswal Financial Services Limited are available on the website at <https://galaxy.motilaloswal.com/ResearchAnalyst/PublishViewLitigation.aspx>

MOFSL, its associates, Research Analyst or their relatives may have any financial interest in the subject company. MOFSL and/or its associates and/or Research Analyst or their relatives may have actual beneficial ownership of 1% or more securities in the subject company at the end of the month immediately preceding the date of publication of the Research Report or date of the public appearance. MOFSL and its associate company(ies), their directors and Research Analyst and their relatives may have any other potential conflict of interests at the time of publication of the research report or at the time of public appearance, however the same shall have no bearing whatsoever on the specific recommendations made by the analyst(s), as the recommendations made by the analyst(s) are completely independent of the views of the associates of MOFSL even though there might exist an inherent conflict of interest in some of the stocks mentioned in the research report..

In the past 12 months, MOFSL or any of its associates may have:

- a. Received any compensation/other benefits from the subject company of this report
- b. Managed or co managed public offering of securities from subject company of this research report,
- c. Received compensation for investment banking or merchant banking or brokerage services from subject company of this research report,
- d. Received compensation for products or services other than investment banking or merchant banking or brokerage services from the subject company of this research report.
- MOFSL and its associates have not received any compensation or other benefits from the subject company or third party in connection with the research report.
- Subject Company may have been a client of MOFSL or its associates during twelve months preceding the date of distribution of the research report.
- Research Analyst may have served as director/officer/employee in the subject company.
- MOFSL and research analyst may engage in market making activity for the subject company.

MOFSL and its associate company(ies), and Research Analyst and their relatives from time to time may

a) a long or short position in, act as principal in, and buy or sell the securities or derivatives thereof of companies mentioned herein.

(b) be engaged in any other transaction involving such securities and earn brokerage or other compensation or act as a market

maker in the financial instruments of the company(ies) discussed herein or act as an advisor or lender/borrower to such ies) or may have any other potential conflict of interests with respect to any recommendation and other related information and opinions.; however the same shall have no bearing whatsoever on the specific recommendations made by the analyst(s), as the recommendations made by the analyst (are completely independent of the views of the associates of MOFSL even though there might exist an inherent conflict of interest in some of the stocks mentioned in the research report.

Above disclosures include beneficial holdings lying in demat account of MOFSL which are opened for proprietary investments only. While calculating beneficial holdings, It does not consider demat accounts which are opened in name of MOFSL for other purposes (i.e holding client securities, collaterals, error trades etc.). MOFSL also earns DP income from clients which are not considered in above disclosures.

To enhance transparency, MOFSL has incorporated a Disclosure of Interest Statement in this document. This should, however, not be treated as endorsement of the views expressed in the report. MOFSL and / or its affiliates do and seek to do business including investment banking with companies covered in its research reports. As a result, the recipients of this report should be aware that MOFSL may have a potential conflict of interest that may affect the objectivity of this report.

Terms & Conditions:

This report has been prepared by MOFSL and is meant for sole use by the recipient and not for circulation. The report and information contained herein is strictly confidential and may not be altered in any way, transmitted to, copied or distributed, in part or in whole, to any other person or to the media or reproduced in any form, without prior written consent of MOFSL. The report is based on the facts, figures and information that are considered true, correct, reliable and accurate. The intent of this report is not recommendatory in nature. The information is obtained from publicly available media or other sources believed to be reliable. Such information has not been independently verified and no guaranty, representation of warranty, express or implied, is made as to its accuracy, completeness or correctness. All such information and opinions are subject to change without notice. The report is prepared solely for informational purpose and does not constitute an offer document or solicitation of offer to buy or sell or subscribe for securities or other financial instruments for the clients. Though disseminated to all the customers simultaneously, not all customers may receive this report at the same time. MOFSL will not treat recipients as customers by virtue of their receiving this report.

Analyst Certification

The views expressed in this research report accurately reflect the personal views of the analyst(s) about the subject securities or issues, and no part of the compensation of the research analyst(s) was, is, or will be directly or indirectly related to the specific recommendations and views

expressed by research analyst(s) in this report. Disclosure of Interest Statement

Analyst ownership of the stock No

A graph of daily closing prices of securities is available at www.nseindia.com, www.bseindia.com. Research Analyst views on Subject Company may vary based on Fundamental research and Technical Research. Proprietary trading desk of MOFSL or its associates maintains arm’s length distance with Research Team as all the activities are segregated from MOFSL research activity and therefore it can have an independent view with regards to subject company for which Research Team have expressed their views.

Regional Disclosures (outside India)

This report is not directed or intended for distribution to or use by any person or entity resident in a state, country or any jurisdiction, where such distribution, publication, availability or use would be contrary to law, regulation or which would subject MOFSL & its group companies to registration or licensing requirements within such jurisdictions. For Hong Kong:

This report is distributed in Hong Kong by Motilal Oswal capital Markets (Hong Kong) Private Limited, a licensed corporation (CE AYY 301) licensed and regulated by the Hong Kong Securities and Futures Commission (SFC) pursuant to the Securities and Futures Ordinance (Chapter 571 of the Laws of Hong Kong) “SFO”. As per SEBI (Research Analyst Regulations) 2014 Motilal Oswal Financial Services Limited (SEBI Reg No. INH000000412) has an agreement with Motilal Oswal capital Markets (Hong Kong) Private Limited for distribution of research report in Hong Kong. This report is intended for distribution only to “Professional Investors” as defined in Part I of Schedule 1 to SFO. Any investment or investment activity to which this document relates is only available to professional investor and will be engaged only with professional investors.” Nothing here is an offer or solicitation of these securities, products and services in any jurisdiction where the offer or sale is not qualified or exempt from registration. The Indian Analyst(s) who compile this report is/are not located in Hong Kong & are not conducting Research Analysis in Hong Kong.

Investment in securities market are subject to market risks, read all the related documents carefully before investing.

For U.S.

MOTILAL Oswal Financial Services Limited (MOFSL) is not a registered broker - dealer under the U.S. Securities Exchange Act of 1934, as amended (the"1934 act") and under applicable state laws in the United States. In addition MOFSL is not a registered investment adviser under the U.S. Investment Advisers Act of 1940, as amended (the "Advisers Act" and together with the 1934 Act, the "Acts), and under applicable state laws in the United States. Accordingly, in the absence of specific exemption under the Acts, any brokerage and investment services provided by MOFSL, including the products and services described herein are not available to or intended for U.S. persons. This report is intended for distribution only to "Major Institutional Investors" as defined by Rule 15a-6(b)(4) of the Exchange Act and interpretations thereof by SEC (henceforth referred to as "major institutional investors"). This document must not be acted on or relied on by persons who are not major institutional investors. Any investment or investment activity to which this document relates is only available to major institutional investors and will be engaged in only with major institutional investors. In reliance on the exemption from registration provided by Rule 15a-6 of the U.S. Securities Exchange Act of 1934, as amended (the "Exchange Act") and interpretations thereof by the U.S. Securities and Exchange Commission ("SEC") in order to conduct business with Institutional Investors based in the U.S., MOFSL has entered into a chaperoning agreement with a U.S. registered broker-dealer, Motilal Oswal Securities International Private Limited. ("MOSIPL"). Any business interaction pursuant to this report will have to be executed within the provisions of this chaperoning agreement.

The Research Analysts contributing to the report may not be registered /qualified as research analyst with FINRA. Such research analyst may not be associated persons of the U.S. registered broker-dealer, MOSIPL, and therefore, may not be subject to NASD rule 2711 and NYSE Rule 472 restrictions on communication with a subject company, public appearances and trading securities held by a research analyst account.

For Singapore

In Singapore, this report is being distributed by Motilal Oswal Capital Markets Singapore Pte Ltd (“MOCMSPL”) (Co.Reg. NO. 201129401Z) which is a holder of a capital markets services license and an exempt financial adviser in Singapore, as per the approved agreement under Paragraph 9 of Third Schedule of Securities and Futures Act (CAP 289) and Paragraph 11 of First Schedule of Financial Advisors Act (CAP 110) provided to MOCMSPL by Monetary Authority of Singapore. Persons in Singapore should contact MOCMSPL in respect of any matter arising from, or in connection with this report/publication/communication. This report is distributed solely to persons who qualify as “Institutional Investors”, of which some of whom may consist of "accredited" institutional investors as defined in section 4A(1) of the Securities and Futures Act, Chapter 289 of Singapore (“the SFA”).

Accordingly, if a Singapore person is not or ceases to be such an institutional investor, such Singapore Person must immediately discontinue any use of this Report and inform MOCMSPL.

Disclaimer:

This report is intended for distribution to Retail Investors.

The report and information contained herein is strictly confidential and meant solely for the selected recipient and may not be altered in any way, transmitted to, copied or distributed, in part or in whole, to any other person or to the media or reproduced in any form, without prior written consent. This report and information herein is solely for informational purpose and may not be used or considered as an offer document or solicitation of offer to buy or sell or subscribe for securities or other financial instruments. Nothing in this report constitutes investment, legal, accounting and tax advice or a representation that any investment or strategy is suitable or appropriate to your specific circumstances. The securities discussed and opinions expressed in this report may not be suitable for all investors, who must make their own investment decisions, based on their own investment objectives, financial positions and needs of specific recipient. This may not be taken in substitution for the exercise of independent judgment by any recipient. Each recipient of this document should make such investigations as it deems necessary to arrive at an independent evaluation of an investment in the securities of companies referred to in this document (including the merits and risks involved), and should consult its own advisors to determine the merits and risks of such an investment. The investment discussed or views expressed may not be suitable for all investors. Certain transactions -including those involving futures, options, another derivative products as well as non-investment grade securities - involve substantial risk and are not suitable for all investors. No representation or warranty, express or implied, is made as to the accuracy, completeness or fairness of the information and opinions contained in this document. The Disclosures of Interest Statement incorporated in this document is provided solely to enhance the transparency and should not be treated as endorsement of the views expressed in the report. This information is subject to change without any prior notice. The Company reserves the right to make modifications and alternations to this statement as may be required from time to time without any prior approval. MOFSL, its associates, their directors and the employees may from time to time, effect or have effected an own account transaction in, or deal as principal or agent in or for the securities mentioned in this document. They may perform or seek to perform investment banking or other services for, or solicit investment banking or other business from, any company referred to in this report. Each of these entities functions as a separate, distinct and independent of each other. The recipient should take this into account before interpreting the document. This report has been prepared on the basis of information that is already available in publicly accessible media or developed through analysis of MOFSL. The views expressed are those of the analyst, and the Company may or may not subscribe to all the views expressed therein. This document is being supplied to you solely for your information and may not be reproduced, redistributed or passed on, directly or indirectly, to any other person or published, copied, in whole or in part, for any purpose. This report is not directed or intended for distribution to, or use by, any person or entity who is a citizen or resident of or located in any locality, state, country or other jurisdiction, where such distribution, publication, availability or use would be contrary to law, regulation or which would subject MOFSL to any registration or licensing requirement within such jurisdiction. The securities described herein may or may not be eligible for sale in all jurisdictions or to certain category of investors. Persons in whose possession this document may come are required to inform themselves of and to observe such restriction. Neither the Firm, not its directors, employees, agents or representatives shall be liable for any damages whether direct or indirect, incidental, special or consequential including lost revenue or lost profits that may arise from or in connection with the use of the information. The person accessing this information specifically agrees to exempt MOFSL or any of its affiliates or employees from, any and all responsibility/liability arising from such misuse and agrees not to hold MOFSL or any of its affiliates or employees responsible for any such misuse and further agrees to hold MOFSL or any of its affiliates or employees free and harmless from all losses, costs, damages, expenses that may be suffered by the person accessing this information due to any errors and delays.

This report is meant for the clients of Motilal Oswal only.

Investment in securities market are subject to market risks. Read all the related documents carefully before investing.

Registration granted by SEBI and certification from NISM in no way guarantee performance of the intermediary or provide any assurance of returns to investors.

Registered Office Address: Motilal Oswal Tower, Rahimtullah Sayani Road, Opposite Parel ST Depot, Prabhadevi, Mumbai-400025; Tel No.: 022 - 71934200 / 71934263; www.motilaloswal.com. Correspondence Address: Palm Spring Centre, 2nd Floor, Palm Court Complex, New Link Road, Malad (West), Mumbai- 400 064. Tel No: 022 71881000. Details of Compliance Officer: Neeraj Agarwal, Email Id: na@motilaloswal.com, Contact No.:022-40548085.

Grievance Redressal Cell:

Contact Person	Contact No.	Email ID
Ms. Hemangi Date	022 40548000 / 022 67490600	query@motilaloswal.com
Ms. Kumud Upadhyay	022 40548082	servicehead@motilaloswal.com
Mr. Ajay Menon	022 40548083	am@motilaloswal.com

Registration details of group entities.: Motilal Oswal Financial Services Ltd. (MOFSL): INZ000158836 (BSE/NSE/MCX/NCDEX); CDSL and NSDL: IN-DP-16-2015; Research Analyst: INH000000412 . AMFI: ARN .: 146822. IRDA Corporate Agent – CA0579. Motilal Oswal Financial Services Ltd. is a distributor of Mutual Funds, PMS, Fixed Deposit, Insurance, Bond, NCDs and IPO products.

Customer having any query/feedback/ clarification may write to query@motilaloswal.com. In case of grievances for any of the services rendered by Motilal Oswal Financial Services Limited (MOFSL) write to grievances@motilaloswal.com, for DP to dpgrievances@motilaloswal.com.