



Solid Research
Solid Relationships

Fundamental Outlook

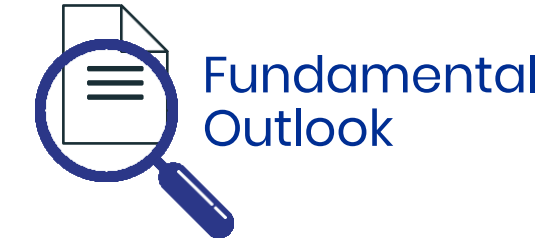
Global Market Summary



- U.S equities rallied on signs of progress in trade talks between U.S. and Chinese officials in London
- Dow ended **0.3% higher**, S&P 500 was **up +0.6%** and Nasdaq closed **up +0.7%**
- **European** markets: CAC and FTSE were flat to positive while Germany was **down by 0.8%**
- Dow futures is currently trading **-0.2% lower**
- **Asian markets** are **trading ~0.5%-1% higher**, buoyed by expectations about the US-China trade talks after the second day of negotiations.

Global Cues: Positive

Indian Market Summary



- **Indian equities** took a breather following a four-day rally. Rate-sensitive sectors including Realty, Banking and Financials witnessed profit booking after RBI-policy led gains in the past few sessions.
- **Nifty50** ended flat at 25,104.
- **Nifty Midcap100** and **Smallcap100** indices also closed on a flattish note.
- **FII**s: **+Rs2,302 cr**; **DII**s **+Rs1,113cr**
- **GIFT Nifty** is trading 40 **points higher (+0.2%)**

Domestic Cues: Positive

News & Impact



11-Jun-25

As per the media articles, the Maharashtra government has approved a significant increase in excise duties on liquor. Maharashtra is a key market, and such sharp increase in excise duty if implemented then would impact volumes for the liquor industry. Maharashtra contributes to ~25-30% of mix for UNSP and 5-7% for RDCK, in our view.

Impact: **Negative for United Spirit and Marginally negative for Radico Khaitan**

Aditya Birla Capital: US private equity firm Advent International offers to sell 1.4% for Rs 856 crore. Affiliate Jomei Investments set floor price at Rs 237.81 apiece. Advent held 3.84% equity as of March.

Impact: **Positive**

Kaynes Technology has entered into an asset purchase agreement with Fujitsu General Electronics Limited, Japan. The agreement, signed on June 9, 2025, involves the acquisition of identified assets, including production lines for power modules, for a consideration of Rs 94cr.

Impact: **Positive**

Actionable Idea



11-Jun-25

Home First Finance

CMP ₹1266; Target price: ₹1500; Upside: 18%, Buy, MTF Stock

- Home First Finance digital-first approach to making home ownership more accessible by offering innovative housing finance solutions and leveraging technology to streamline processes.
- In Apr'25, HomeFirst successfully completed its maiden QIP, raising INR12.5b. The strong investor participation reflects sustained confidence in the company's differentiated business model, robust governance, and longterm growth potential.
- HomeFirst is sharpening its focus on emerging states such as Rajasthan, UP, and MP, which are witnessing rapid infrastructure development across transportation, ports, energy, and industrial corridors.
- Technology remains a key differentiator for HomeFirst, with over 50% of new sourcing now fully digital and ~75% Account Aggregator penetration as of FY25.
- HomeFirst trades at ~2.7x FY27E P/BV, which is attractive for an AUM/PAT CAGR of ~26%/30% over FY25-27E, with RoA/RoE of 3.8%/14.2% in FY27E. HomeFirst is our preferred pick in the AHF segment

View: Buy

Actionable Idea



Jindal Steel and Power

CMP ₹974; Target price: ₹1100; Target: +13%; Buy, MTF Stock

- China-US agree on framework to implement Geneva trade consensus after second day of London talks.
- JSPL has initiated a comprehensive capex plan for its Angul facility to expand its crude steel capacity by 65% to 15.9mtpa and finished steel capacity by 83% to 13.75mtpa. This expansion is expected to be complete by 1QFY27 and will position JSPL as the fourth-largest steel producer in India.
- JSPL is taking cost-effective measures to boost its operating margin, such as 1) strengthening raw material integration, 2) increasing its captive power plant share, 3) increasing the flat steel mix to ~70%, and 4) focusing on VAP (current share ~66%). Further, JSPL has started ramping up the Gare Palma IV/6 and Utkal block C, while Utkal C and B1 & B2 will be coming on stream soon, resulting in RM integration and cost effectiveness.
- JSPL has deleveraged its balance sheet significantly by reducing its net debt from INR464b in FY16 to INR114b in FY25 with a net debt-to-EBITDA ratio of 1.26x as of 4QFY25.

View: Buy

Focus Ideas for the Month



Fundamental
Outlook

11-Jun-25

All Stocks Available in MTF

Duration : 1 Year Horizon

Stock Name	Rating	CMP (Rs)	Target (Rs)	Upside (%)
Niva Bupa	Buy	83	100	20%
ICICI Bank	Buy	1,422	1,650	16%
Nuvama Wealth	Buy	7,539	8,600	14%
M&M	Buy	3,075	3,482	13%
Radico Khaitan	Buy	2,650	3,000	13%

Investment in securities market are subject to market risks, read all the related documents carefully before investing.

Technical Outlook

Nifty Technical Outlook



11-Jun-25

NIFTY (CMP : 25104) Nifty immediate support is at 25000 then 24850 zones while resistance at 25200 then 25400 zones. Now it has to hold above 25000 zones for an up move towards 25200 then 25400 levels while on the downside supports shifting higher at 25000 and then 24850 zones.

1-Nifty50 - 10/06/25



Investment in securities market are subject to market risks, read all the related documents carefully before investing.

Bank Nifty Technical Outlook



11-Jun-25

BANK NIFTY (CMP : 56629) Bank Nifty support is at 56250 then 56000 zones while resistance at 57000 then 57250 zones. Now it has to hold above 56500 zones for an up move towards 57000 then new life time high towards 57250 zones while on the downside support is seen at 56250 then 56000 levels.

1-Niftybank - 10/06/25



Investment in securities market are subject to market risks, read all the related documents carefully before investing.

Sectoral Performance



Technical
Outlook

**motilal
oswal**
Wealth Management

11-Jun-25

	Closing	% Change				
Indices	10-Jun	1-day	2-days	3-days	5-days	
NIFTY 50	25104	<div><div></div></div> 0.00%	<div><div></div></div> 0.40%	<div><div></div></div> 1.43%	<div><div></div></div> 2.29%	
NIFTY BANK	56629	<div><div></div></div> -0.37%	<div><div></div></div> 0.09%	<div><div></div></div> 1.56%	<div><div></div></div> 1.85%	
NIFTY MIDCAP 100	59681	<div><div></div></div> 0.01%	<div><div></div></div> 1.14%	<div><div></div></div> 2.36%	<div><div></div></div> 3.76%	
NIFTY SMALLCAP 250	17544	<div><div></div></div> 0.17%	<div><div></div></div> 1.50%	<div><div></div></div> 2.16%	<div><div></div></div> 3.38%	
NIFTY FINANCIAL SERVICES	26867	<div><div></div></div> -0.47%	<div><div></div></div> 0.07%	<div><div></div></div> 1.82%	<div><div></div></div> 2.33%	
NIFTY PRIVATE BANK	28074	<div><div></div></div> -0.17%	<div><div></div></div> 0.87%	<div><div></div></div> 2.67%	<div><div></div></div> 2.66%	
NIFTY PSU BANK	7171	<div><div></div></div> -0.52%	<div><div></div></div> 0.99%	<div><div></div></div> 1.58%	<div><div></div></div> 1.23%	
➡ NIFTY IT	38300	<div><div></div></div> 1.67%	<div><div></div></div> 2.70%	<div><div></div></div> 3.21%	<div><div></div></div> 4.03%	
NIFTY FMCG	56199	<div><div></div></div> 0.31%	<div><div></div></div> 0.71%	<div><div></div></div> 1.02%	<div><div></div></div> 1.33%	
NIFTY OIL & GAS	11556	<div><div></div></div> -0.08%	<div><div></div></div> 0.95%	<div><div></div></div> 1.53%	<div><div></div></div> 2.48%	
NIFTY PHARMA	21948	<div><div></div></div> 0.56%	<div><div></div></div> 1.22%	<div><div></div></div> 1.40%	<div><div></div></div> 2.78%	
NIFTY AUTO	23759	<div><div></div></div> -0.08%	<div><div></div></div> 0.41%	<div><div></div></div> 1.94%	<div><div></div></div> 2.11%	
NIFTY METAL	9510	<div><div></div></div> 0.35%	<div><div></div></div> 1.10%	<div><div></div></div> 3.01%	<div><div></div></div> 4.25%	
NIFTY REALTY	1026	<div><div></div></div> -1.14%	<div><div></div></div> -1.28%	<div><div></div></div> 3.34%	<div><div></div></div> 4.42%	
➡ NIFTY INDIA DEFENCE	8996	<div><div></div></div> 1.07%	<div><div></div></div> 0.86%	<div><div></div></div> -0.86%	<div><div></div></div> 2.31%	
NIFTY CPSE	6632	<div><div></div></div> 0.32%	<div><div></div></div> 1.26%	<div><div></div></div> 1.87%	<div><div></div></div> 3.54%	

Investment in securities market are subject to market risks, read all the related documents carefully before investing.

Technical Trading Idea

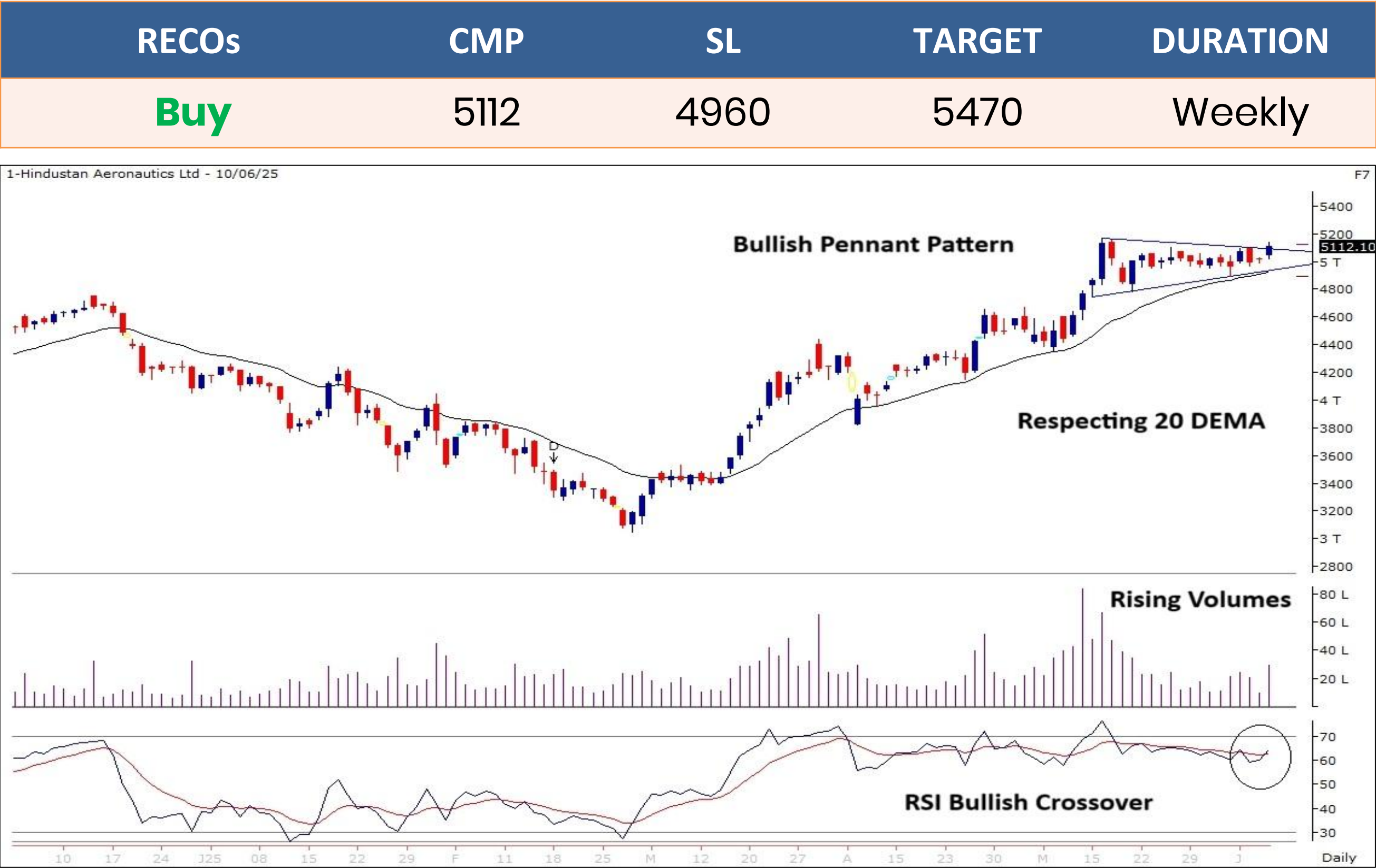
11-Jun-25

HAL

(Mcap 3,41,884 Cr.)

F&O Stock, MTF Stock

- Bullish Pennant pattern on the daily chart.
- Respecting 20 DEMA support zones.
- Higher than average traded volumes visible.
- RSI indicator giving bullish crossover.
- We recommend to buy the stock at CMP ₹5112 with a SL of ₹4690 and a TGT of ₹5470.



Investment in securities market are subject to market risks, read all the related documents carefully before investing.

Stocks On Radar

11-Jun-25

GAIL

(CMP: 195, Mcap 1,28,655 Cr.)

F&O Stock, MTF Stock

- Verge of breakout above 197.
- Respecting 50 DEMA support zones.
- Higher than average traded volumes.
- RSI indicator positively placed.
- Immediate support at 190.

MPHASIS

(CMP: 2671, Mcap 50,816 Cr.)

F&O Stock, MTF Stock

- Ascending triangle breakout on daily chart.
- Rising volumes.
- MACD indicator giving bullish crossover.
- Immediate support at 2560.



Investment in securities market are subject to market risks, read all the related documents carefully before investing.

Derivative Outlook

Derivative Outlook



- Nifty June future closed at 25,160.60 with a premium of 56.35 point v/s 78.60 point premium in the last session.
- Nifty Put/Call Ratio (OI) decreased from 1.01 to 0.97 level.
- India VIX decreased by 4.83% to 13.98 level.

FII Cash & Derivative Activity



11-Jun-25

- FII on Derivatives front : Position unwinding in index futures, Call selling and Put buying in index options.
- In the cash market : FIIs were net buyers to the tune of 2302 Cr while DIIs were also net buyers worth 1113 Cr.
- FIIs long short ratio : Hovering near 20%

INSTITUTIONAL DERIVATIVES ACTIVITY

Change in OI in Future Index Long (in contracts)					Change in OI in Future Index Short (in contracts)					Change in OI in Future Stock Long (in contracts)					Change in OI in Future Stock Short (in contracts)				
Date	Client	DII	FII	Pro	Date	Client	DII	FII	Pro	Date	Client	DII	FII	Pro	Date	Client	DII	FII	Pro
04-Jun-25	3462	-394	1138	-449	04-Jun-25	4216	251	919	-1629	04-Jun-25	31245	976	6534	22131	04-Jun-25	14700	31547	14100	539
05-Jun-25	4465	-1576	-620	7150	05-Jun-25	4431	3925	3433	-2370	05-Jun-25	23662	2560	21368	9284	05-Jun-25	8335	8624	27707	12208
06-Jun-25	-946	1011	6924	1696	06-Jun-25	6199	735	-7334	9085	06-Jun-25	-25847	11664	30491	-7709	06-Jun-25	439	14331	-24606	18435
09-Jun-25	5105	3108	-2156	-3361	09-Jun-25	58	48	986	1604	09-Jun-25	21877	11625	7230	5769	09-Jun-25	18362	2766	7241	18132
10-Jun-25	-388	-1699	-130	-4145	10-Jun-25	-2917	1200	-2978	-1667	10-Jun-25	17212	5858	-36409	9362	10-Jun-25	6224	-23708	8433	5074

Change in OI in Option Index Call Long (in contracts)					Change in OI in Option Index Call Short (in contracts)					Change in OI in Option Index Put Long (in contracts)					Change in OI in Option Index Put Short (in contracts)				
Date	Client	DII	FII	Pro	Date	Client	DII	FII	Pro	Date	Client	DII	FII	Pro	Date	Client	DII	FII	Pro
04-Jun-25	-724	0	-29940	76639	04-Jun-25	35091	0	128	10754	04-Jun-25	262532	0	-21752	139278	04-Jun-25	194155	0	44096	141808
05-Jun-25	-1419044	0	-117406	-710819	05-Jun-25	-1548300	0	-139692	-559275	05-Jun-25	-677946	0	-118763	-339759	05-Jun-25	-676896	0	-150476	-309098
06-Jun-25	272249	0	104341	265605	06-Jun-25	421059	0	78195	142939	06-Jun-25	663187	300	47535	219977	06-Jun-25	595451	0	72266	263283
09-Jun-25	381856	0	42852	55629	09-Jun-25	289976	0	69075	121287	09-Jun-25	347539	0	10142	35530	09-Jun-25	278771	0	24089	90351
10-Jun-25	322539	0	38911	49617	10-Jun-25	276479	0	44125	90463	10-Jun-25	134103	0	48414	67667	10-Jun-25	179611	0	21609	48964

Today's OI Changes (in contracts)										Cumulative Positions (in contracts)									
Clients	Index Futures			Index Calls			Index Puts			Clients	Index Futures			Index Calls			Index Puts		
	Long	Short	Net	Long	Short	Net	Long	Short	Net		Long	Short	Net	Long	Short	Net	Long	Short	Net
	-388	-2917	2529	322539	276479	46060	134103	179611	-45508		193068	123968	69100	2477292	2661802	-184510	2448518	2596742	-148224
DII	-1699	1200	-2899	0	0	0	0	0	0	DII	80452	40925	39527	70	0	70	11201	0	11201
FII	-130	-2978	2848	38911	44125	-5214	48414	21609	26805	FII	30942	123966	-93024	620905	504331	116574	599786	444525	155261
Pro	-4145	-1667	-2478	49617	90463	-40846	67667	48964	18703	Pro	22060	37663	-15603	1054480	986614	67866	989897	1008135	-18238

FII Derivatives Activity		Index Long Short Ratio	
Segment	Net Amount (in Cr)		
Index Futures	560	Clients	60.90%
Index Options	4321	DII	66.28%
Stock Futures	-3391	FII	19.97%
Stock Options	-4674	Pro	36.94%

Institutions Activity in Cash Segment - Net Value (in Cr)							
	10-Jun-25	09-Jun-25	06-Jun-25	05-Jun-25	04-Jun-25	03-Jun-25	02-Jun-25
FIIs	2301.87	1992.87	1009.71	-208.47	1076.18	-2853.83	-2589.47
DIIs	1113.34	3503.79	9342.48	2382.4	2566.82	5907.97	5313.76



Investments in securities markets are subject to market risks.
Please read all related documents carefully.

Investment in securities market are subject to market risks, read all the related documents carefully before investing.

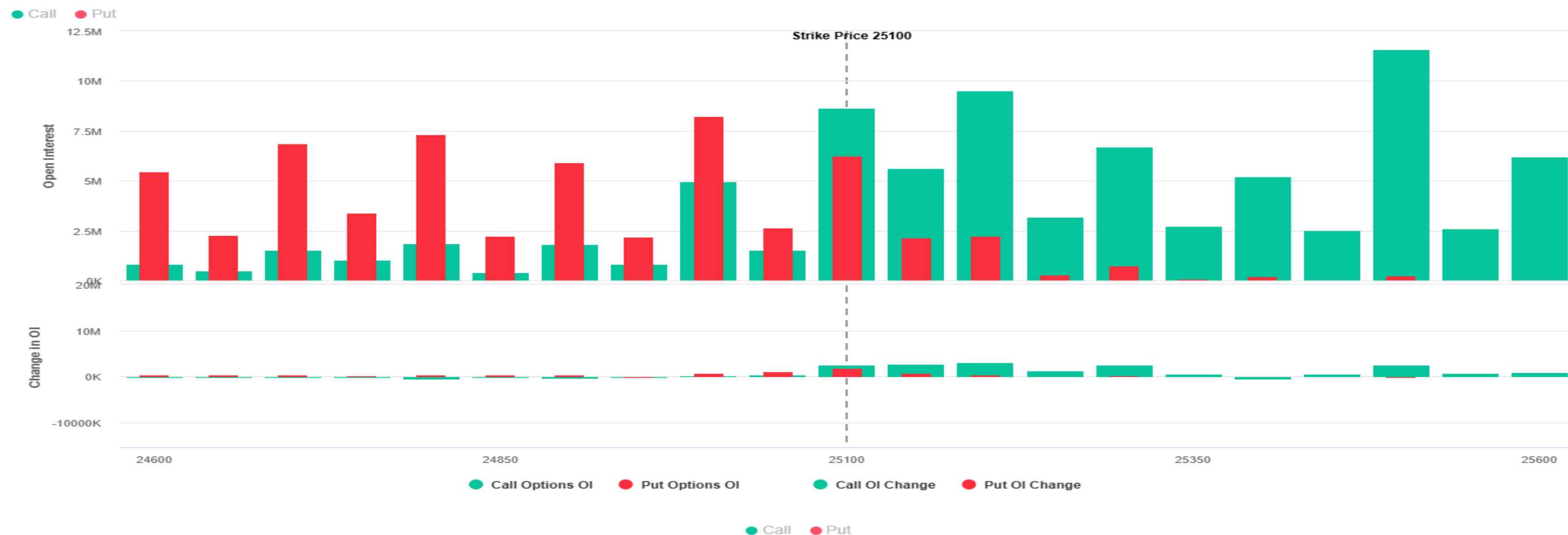
Nifty : Option Data



11-Jun-25

- Maximum Call OI is at 25200 then 25500 strike while Maximum Put OI is at 25000 then 24500 strike.
- Call writing is seen at 25150 then 25200 strike while Put writing is seen at 25100 then 25000 strike.
- Option data suggests a broader trading range in between 24600 to 25600 zones while an immediate range between 24900 to 25300 levels.

Nifty 50 OI Chart(12 Jun 2025)



Investment in securities market are subject to market risks, read all the related documents carefully before investing.

Option - Buying side strategy



11-Jun-25

Index	Single Leg Buying	Multi Leg Strategy
Nifty (Weekly)	25100 CE till it holds above 25000	Bull Call Spread (Buy 25100 CE and Sell 25300 CE) at net premium cost of 50-60 points
Sensex (Weekly)	83200 CE till it holds above 82200	Bull Call Spread (Buy 82500 CE and Sell 82700 CE) at net premium cost of 80-90 points
Bank Nifty (Monthly)	57800 CE till it holds above 56500	Bull Call Spread (Buy 57000 CE and Sell 57500 CE) at net premium cost of 210-220 points

Option - Selling side strategy



11-Jun-25

Index	Writing
Nifty (Weekly)	24600 PE & 25500 CE
Sensex (Weekly)	78000 PE & 85500 CE
Bank Nifty (Monthly)	54500 PE & 59000 CE

Weekly Option Range for Option Writers based on Different Confidence Band								
Date		11-Jun-25	Weekly Expiry		12-Jun-25	Days to weekly expiry		2
Nifty		25104	India VIX		14.0			
Confidence Band	Probability	% Away From Spot	Range				Total Premium (Put + Call)	Types of Trades
			Put	Premium	Call	Premium		
1.00	68%	± 0.8%	24900	34	25300	23	56	Aggressive
1.25	79%	± 0.8%	24900	34	25300	23	56	Less Aggressive
1.50	87%	± 1.0%	24850	26	25350	17	43	Neutral
1.75	92%	± 1.2%	24800	21	25400	13	34	Conservative
2.00	95%	± 1.4%	24750	16	25450	10	26	Most Conservative
Date		11-Jun-25	Monthly Expiry		26-Jun-25	Days to expiry		10
Bank Nifty		56629						
Confidence Band	Probability	% Away From Spot	Range				Total Premium (Put + Call)	Types of Trades
			Put	Premium	Call	Premium		
1.00	68%	± 2.2%	55400	254	57800	269	523	Aggressive
1.25	79%	± 2.5%	55200	215	58000	220	435	Less Aggressive
1.50	87%	± 3.1%	54900	169	58300	166	335	Neutral
1.75	92%	± 3.6%	54600	135	58600	120	255	Conservative
2.00	95%	± 4.1%	54300	104	58900	86	191	Most Conservative
Investments in securities markets are subject to market risks. Please read all related documents carefully.								

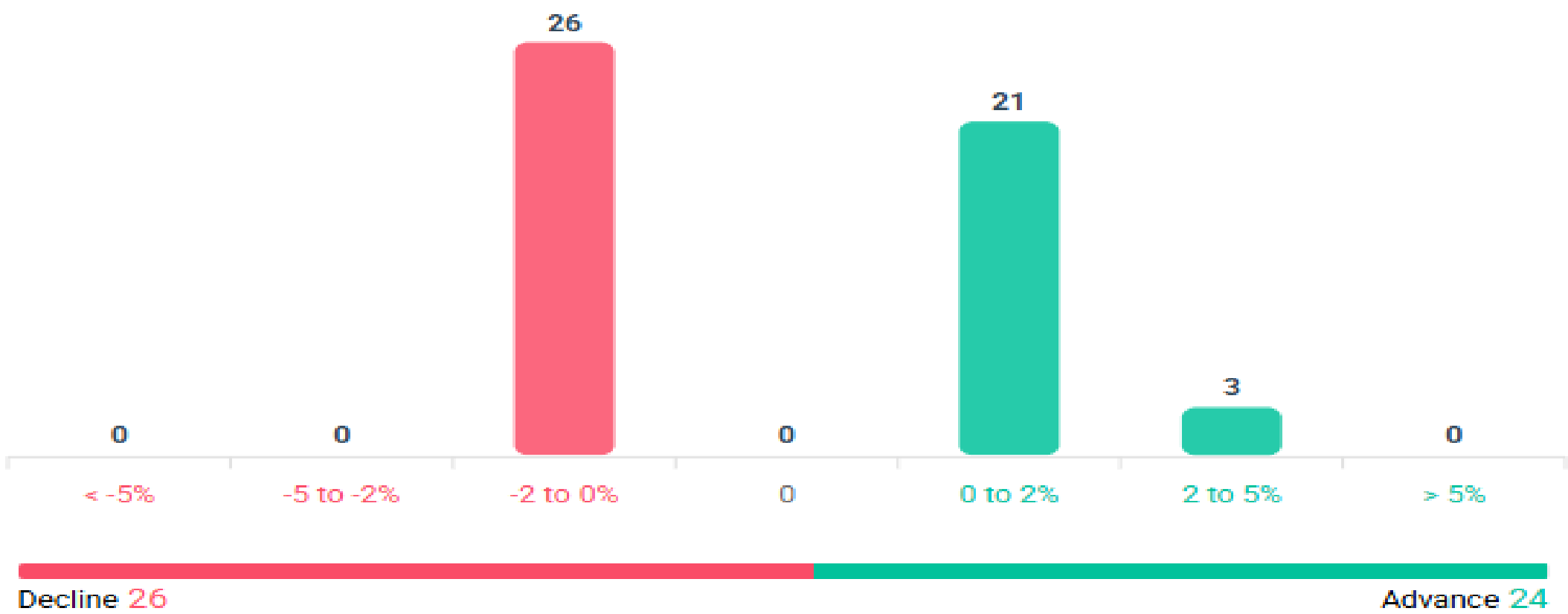
Nifty Advance Decline & Ban update



Stocks in Ban: TITAGARH, ABFRL, CHAMBLFERT, HINDCOPPER, IREDA, RBLBANK

Advance & Decline

All FNO **Nifty 50** Bank Nifty Fin Nifty

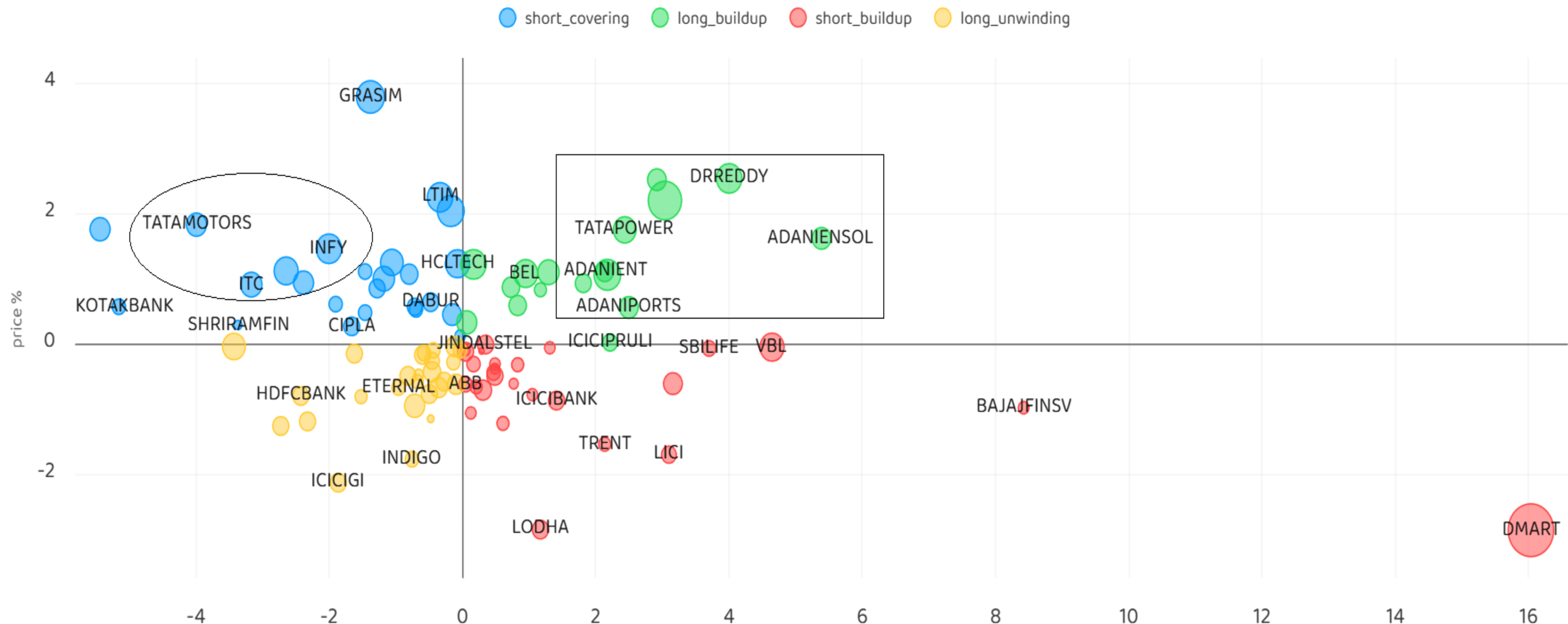


Investment in securities market are subject to market risks, read all the related documents carefully before investing.

Stocks : Derivatives Outlook



11-Jun-25



Investment in securities market are subject to market risks, read all the related documents carefully before investing.

Stocks : Options on radar



11-Jun-25

Stock	Call Strike	Trade	Buying Range	SL	TGT	Logic
INFY	1600 CE	Buy	28-29	23	41	Short Covering
TATAMOTORS	730 CE	Buy	19-20	14	30	Short Covering
DIVISLAB	6700 CE	Buy	132-133	107	183	Long Built up

Stock	Put Strike	Trade	Buying Range	SL	TGT	Logic
GODREJCP	1210 PE	Buy	18-19	13	29	Short Built up
ICICIBANK	1420 PE	Buy	18-19	14	27	Short Built up

Investment in securities market are subject to market risks, read all the related documents carefully before investing.

Quant Outlook

Quant Intraday Sell Ideas



What is this?

Based on technical indicators this strategy gives 2 stocks that have a high likelihood to fall during the day (from open to close). This is an intraday Sell strategy which can provide a good cushioning during a black swan event.

Today's **Sell** Ideas:

Stock Names	Close Price	SL (1%)	TP (1%)
DIVISLAB (Sell)	6674.0	6740.7	6607.3
APOLLOTYRE (Sell)	467.9	472.6	463.2

What are the rules?

- Stock names will be given at market open (9:15 am)
- Recommended time to entry: between 9:15 to 9:30 am.
- Entry: We short 2 stocks daily (intraday)
- Exit: we will exit at 3:15 as this is an intraday call
- SL: is placed at 1% of the open.
- Book profit: At 1% fall since open.
- In special situations the book profit might be delayed if the stock is in free fall.

Siddhartha Khemka
Head – Retail Research

Chandan Taparria, CMT, CFTe
Head- Derivatives & Technical Analyst

Neil Jha
Head- Quant

Disclosures:

The following Disclosures are being made in compliance with the SEBI Research Analyst Regulations 2014 (herein after referred to as the Regulations).

Motilal Oswal Financial Services Ltd. (MOFSL) is a SEBI Registered Research Analyst having registration no. INH000000412. MOFSL, the Research Entity (RE) as defined in the Regulations, is engaged in the business of providing Stock broking services, Depository participant services & distribution of various financial products. MOFSL is a listed public company, the details in respect of which are available on www.motilaloswal.com. MOFSL is registered with the Securities & Exchange Board of India (SEBI) and is a registered Trading Member with National Stock Exchange of India Ltd. (NSE) and Bombay Stock Exchange Limited (BSE), Multi Commodity Exchange of India Limited (MCX) and National Commodity & Derivatives Exchange Limited (NCDEX) for its stock broking activities & is Depository participant with Central Depository Services Limited (CDSL) National Securities Depository Limited (NSDL),NERL, COMRIS and CCRL and is member of Association of Mutual Funds of India (AMFI) for distribution of financial products and Insurance Regulatory & Development Authority of India (IRDA) as Corporate Agent for insurance products. Details of associate entities of Motilal Oswal Financial Services Ltd. are available on the website at <http://onlinereports.motilaloswal.com/Dormant/documents/Associate%20Details.pdf>

Details of pending Enquiry Proceedings of Motilal Oswal Financial Services Limited are available on the website at <https://galaxy.motilaloswal.com/ResearchAnalyst/PublishViewLitigation.aspx>

MOFSL, its associates, Research Analyst or their relatives may have any financial interest in the subject company. MOFSL and/or its associates and/or Research Analyst or their relatives may have actual beneficial ownership of 1% or more securities in the subject company at the end of the month immediately preceding the date of publication of the Research Report or date of the public appearance. MOFSL and its associate company(ies), their directors and Research Analyst and their relatives may have any other potential conflict of interests at the time of publication of the research report or at the time of public appearance, however the same shall have no bearing whatsoever on the specific recommendations made by the analyst(s), as the recommendations made by the analyst(s) are completely independent of the views of the associates of MOFSL even though there might exist an inherent conflict of interest in some of the stocks mentioned in the research report..

In the past 12 months, MOFSL or any of its associates may have:

- a. Received any compensation/other benefits from the subject company of this report
- b. Managed or co managed public offering of securities from subject company of this research report,
- c. Received compensation for investment banking or merchant banking or brokerage services from subject company of this research report,
- d. Received compensation for products or services other than investment banking or merchant banking or brokerage services from the subject company of this research report.
- MOFSL and its associates have not received any compensation or other benefits from the subject company or third party in connection with the research report.
- Subject Company may have been a client of MOFSL or its associates during twelve months preceding the date of distribution of the research report.
- Research Analyst may have served as director/officer/employee in the subject company.
- MOFSL and research analyst may engage in market making activity for the subject company.

MOFSL and its associate company(ies), and Research Analyst and their relatives from time to time may

a) a long or short position in, act as principal in, and buy or sell the securities or derivatives thereof of companies mentioned herein.

(b) be engaged in any other transaction involving such securities and earn brokerage or other compensation or act as a market

maker in the financial instruments of the company(ies) discussed herein or act as an advisor or lender/borrower to such ies) or may have any other potential conflict of interests with respect to any recommendation and other related information and opinions.; however the same shall have no bearing whatsoever on the specific recommendations made by the analyst(s), as the recommendations made by the analyst (are completely independent of the views of the associates of MOFSL even though there might exist an inherent conflict of interest in some of the stocks mentioned in the research report.

Above disclosures include beneficial holdings lying in demat account of MOFSL which are opened for proprietary investments only. While calculating beneficial holdings, It does not consider demat accounts which are opened in name of MOFSL for other purposes (i.e holding client securities, collaterals, error trades etc.). MOFSL also earns DP income from clients which are not considered in above disclosures.

To enhance transparency, MOFSL has incorporated a Disclosure of Interest Statement in this document. This should, however, not be treated as endorsement of the views expressed in the report. MOFSL and / or its affiliates do and seek to do business including investment banking with companies covered in its research reports. As a result, the recipients of this report should be aware that MOFSL may have a potential conflict of interest that may affect the objectivity of this report.

Terms & Conditions:

This report has been prepared by MOFSL and is meant for sole use by the recipient and not for circulation. The report and information contained herein is strictly confidential and may not be altered in any way, transmitted to, copied or distributed, in part or in whole, to any other person or to the media or reproduced in any form, without prior written consent of MOFSL. The report is based on the facts, figures and information that are considered true, correct, reliable and accurate. The intent of this report is not recommendatory in nature. The information is obtained from publicly available media or other sources believed to be reliable. Such information has not been independently verified and no guaranty, representation of warranty, express or implied, is made as to its accuracy, completeness or correctness. All such information and opinions are subject to change without notice. The report is prepared solely for informational purpose and does not constitute an offer document or solicitation of offer to buy or sell or subscribe for securities or other financial instruments for the clients. Though disseminated to all the customers simultaneously, not all customers may receive this report at the same time. MOFSL will not treat recipients as customers by virtue of their receiving this report.

Analyst Certification

The views expressed in this research report accurately reflect the personal views of the analyst(s) about the subject securities or issues, and no part of the compensation of the research analyst(s) was, is, or will be directly or indirectly related to the specific recommendations and views

expressed by research analyst(s) in this report. Disclosure of Interest Statement

Analyst ownership of the stock No

A graph of daily closing prices of securities is available at www.nseindia.com, www.bseindia.com. Research Analyst views on Subject Company may vary based on Fundamental research and Technical Research. Proprietary trading desk of MOFSL or its associates maintains arm’s length distance with Research Team as all the activities are segregated from MOFSL research activity and therefore it can have an independent view with regards to subject company for which Research Team have expressed their views.

Regional Disclosures (outside India)

This report is not directed or intended for distribution to or use by any person or entity resident in a state, country or any jurisdiction, where such distribution, publication, availability or use would be contrary to law, regulation or which would subject MOFSL & its group companies to registration or licensing requirements within such jurisdictions. For Hong Kong:

This report is distributed in Hong Kong by Motilal Oswal capital Markets (Hong Kong) Private Limited, a licensed corporation (CE AYY 301) licensed and regulated by the Hong Kong Securities and Futures Commission (SFC) pursuant to the Securities and Futures Ordinance (Chapter 571 of the Laws of Hong Kong) “SFO”. As per SEBI (Research Analyst Regulations) 2014 Motilal Oswal Financial Services Limited (SEBI Reg No. INH000000412) has an agreement with Motilal Oswal capital Markets (Hong Kong) Private Limited for distribution of research report in Hong Kong. This report is intended for distribution only to “Professional Investors” as defined in Part I of Schedule 1 to SFO. Any investment or investment activity to which this document relates is only available to professional investor and will be engaged only with professional investors.” Nothing here is an offer or solicitation of these securities, products and services in any jurisdiction where the offer or sale is not qualified or exempt from registration. The Indian Analyst(s) who compile this report is/are not located in Hong Kong & are not conducting Research Analysis in Hong Kong.

Investment in securities market are subject to market risks, read all the related documents carefully before investing.

For U.S.

MOTILAL Oswal Financial Services Limited (MOFSL) is not a registered broker - dealer under the U.S. Securities Exchange Act of 1934, as amended (the"1934 act") and under applicable state laws in the United States. In addition MOFSL is not a registered investment adviser under the U.S. Investment Advisers Act of 1940, as amended (the "Advisers Act" and together with the 1934 Act, the "Acts), and under applicable state laws in the United States. Accordingly, in the absence of specific exemption under the Acts, any brokerage and investment services provided by MOFSL, including the products and services described herein are not available to or intended for U.S. persons. This report is intended for distribution only to "Major Institutional Investors" as defined by Rule 15a-6(b)(4) of the Exchange Act and interpretations thereof by SEC (henceforth referred to as "major institutional investors"). This document must not be acted on or relied on by persons who are not major institutional investors. Any investment or investment activity to which this document relates is only available to major institutional investors and will be engaged in only with major institutional investors. In reliance on the exemption from registration provided by Rule 15a-6 of the U.S. Securities Exchange Act of 1934, as amended (the "Exchange Act") and interpretations thereof by the U.S. Securities and Exchange Commission ("SEC") in order to conduct business with Institutional Investors based in the U.S., MOFSL has entered into a chaperoning agreement with a U.S. registered broker-dealer, Motilal Oswal Securities International Private Limited. ("MOSIPL"). Any business interaction pursuant to this report will have to be executed within the provisions of this chaperoning agreement.

The Research Analysts contributing to the report may not be registered /qualified as research analyst with FINRA. Such research analyst may not be associated persons of the U.S. registered broker-dealer, MOSIPL, and therefore, may not be subject to NASD rule 2711 and NYSE Rule 472 restrictions on communication with a subject company, public appearances and trading securities held by a research analyst account.

For Singapore

In Singapore, this report is being distributed by Motilal Oswal Capital Markets Singapore Pte Ltd (“MOCMSPL”) (Co.Reg. NO. 201129401Z) which is a holder of a capital markets services license and an exempt financial adviser in Singapore, as per the approved agreement under Paragraph 9 of Third Schedule of Securities and Futures Act (CAP 289) and Paragraph 11 of First Schedule of Financial Advisors Act (CAP 110) provided to MOCMSPL by Monetary Authority of Singapore. Persons in Singapore should contact MOCMSPL in respect of any matter arising from, or in connection with this report/publication/communication. This report is distributed solely to persons who qualify as “Institutional Investors”, of which some of whom may consist of "accredited" institutional investors as defined in section 4A(1) of the Securities and Futures Act, Chapter 289 of Singapore (“the SFA”).

Accordingly, if a Singapore person is not or ceases to be such an institutional investor, such Singapore Person must immediately discontinue any use of this Report and inform MOCMSPL.

Disclaimer:

This report is intended for distribution to Retail Investors.

The report and information contained herein is strictly confidential and meant solely for the selected recipient and may not be altered in any way, transmitted to, copied or distributed, in part or in whole, to any other person or to the media or reproduced in any form, without prior written consent. This report and information herein is solely for informational purpose and may not be used or considered as an offer document or solicitation of offer to buy or sell or subscribe for securities or other financial instruments. Nothing in this report constitutes investment, legal, accounting and tax advice or a representation that any investment or strategy is suitable or appropriate to your specific circumstances. The securities discussed and opinions expressed in this report may not be suitable for all investors, who must make their own investment decisions, based on their own investment objectives, financial positions and needs of specific recipient. This may not be taken in substitution for the exercise of independent judgment by any recipient. Each recipient of this document should make such investigations as it deems necessary to arrive at an independent evaluation of an investment in the securities of companies referred to in this document (including the merits and risks involved), and should consult its own advisors to determine the merits and risks of such an investment. The investment discussed or views expressed may not be suitable for all investors. Certain transactions -including those involving futures, options, another derivative products as well as non-investment grade securities - involve substantial risk and are not suitable for all investors. No representation or warranty, express or implied, is made as to the accuracy, completeness or fairness of the information and opinions contained in this document. The Disclosures of Interest Statement incorporated in this document is provided solely to enhance the transparency and should not be treated as endorsement of the views expressed in the report. This information is subject to change without any prior notice. The Company reserves the right to make modifications and alternations to this statement as may be required from time to time without any prior approval. MOFSL, its associates, their directors and the employees may from time to time, effect or have effected an own account transaction in, or deal as principal or agent in or for the securities mentioned in this document. They may perform or seek to perform investment banking or other services for, or solicit investment banking or other business from, any company referred to in this report. Each of these entities functions as a separate, distinct and independent of each other. The recipient should take this into account before interpreting the document. This report has been prepared on the basis of information that is already available in publicly accessible media or developed through analysis of MOFSL. The views expressed are those of the analyst, and the Company may or may not subscribe to all the views expressed therein. This document is being supplied to you solely for your information and may not be reproduced, redistributed or passed on, directly or indirectly, to any other person or published, copied, in whole or in part, for any purpose. This report is not directed or intended for distribution to, or use by, any person or entity who is a citizen or resident of or located in any locality, state, country or other jurisdiction, where such distribution, publication, availability or use would be contrary to law, regulation or which would subject MOFSL to any registration or licensing requirement within such jurisdiction. The securities described herein may or may not be eligible for sale in all jurisdictions or to certain category of investors. Persons in whose possession this document may come are required to inform themselves of and to observe such restriction. Neither the Firm, not its directors, employees, agents or representatives shall be liable for any damages whether direct or indirect, incidental, special or consequential including lost revenue or lost profits that may arise from or in connection with the use of the information. The person accessing this information specifically agrees to exempt MOFSL or any of its affiliates or employees from, any and all responsibility/liability arising from such misuse and agrees not to hold MOFSL or any of its affiliates or employees responsible for any such misuse and further agrees to hold MOFSL or any of its affiliates or employees free and harmless from all losses, costs, damages, expenses that may be suffered by the person accessing this information due to any errors and delays.

This report is meant for the clients of Motilal Oswal only.

Investment in securities market are subject to market risks. Read all the related documents carefully before investing.

Registration granted by SEBI and certification from NISM in no way guarantee performance of the intermediary or provide any assurance of returns to investors.

Registered Office Address: Motilal Oswal Tower, Rahimtullah Sayani Road, Opposite Parel ST Depot, Prabhadevi, Mumbai-400025; Tel No.: 022 - 71934200 / 71934263; www.motilaloswal.com. Correspondence Address: Palm Spring Centre, 2nd Floor, Palm Court Complex, New Link Road, Malad (West), Mumbai- 400 064. Tel No: 022 71881000. Details of Compliance Officer: Neeraj Agarwal, Email Id: na@motilaloswal.com, Contact No.:022-40548085.

Grievance Redressal Cell:

Contact Person	Contact No.	Email ID
Ms. Hemangi Date	022 40548000 / 022 67490600	query@motilaloswal.com
Ms. Kumud Upadhyay	022 40548082	servicehead@motilaloswal.com
Mr. Ajay Menon	022 40548083	am@motilaloswal.com

Registration details of group entities.: Motilal Oswal Financial Services Ltd. (MOFSL): INZ000158836 (BSE/NSE/MCX/NCDEX); CDSL and NSDL: IN-DP-16-2015; Research Analyst: INH000000412 . AMFI: ARN .: 146822. IRDA Corporate Agent – CA0579. Motilal Oswal Financial Services Ltd. is a distributor of Mutual Funds, PMS, Fixed Deposit, Insurance, Bond, NCDs and IPO products.

Customer having any query/feedback/ clarification may write to query@motilaloswal.com. In case of grievances for any of the services rendered by Motilal Oswal Financial Services Limited (MOFSL) write to grievances@motilaloswal.com, for DP to dpgrievances@motilaloswal.com.