

Dt.: 2<sup>nd</sup> Nov, 2023

EXPIRY	S2	S1	PIVOT	R1	R2
<b>PRECIOUS METALS</b>					
<b>GOLD</b>	48632	49740	50560	52485	53050
<b>SILVER</b>	63629	68465	70750	74526	77015

EXPIRY	S2	S1	PIVOT	R1	R2
<b>ENERGY</b>					
<b>CRUDEOIL</b>	7054	7200	7310	7554	7721
<b>NAT GAS</b>	244.8	247.4	249	251.6	254.4

SHORT TERM TREND (MCX)				
	Trend	Reversal	Support	Resistance
<b>Gold</b>	Positive	55410	48520	53450
<b>Silver</b>	Positive	74550	76000	70541
<b>Crude</b>	Positive	5950	6600	6800
<b>Copper</b>	Positive	755	701	745
<b>Lead</b>	Positive	202	195	201
<b>Nickel</b>	Positive	1220	1080	1205
<b>Aluminum</b>	Positive	153	144	151
<b>Zinc</b>	Positive	205	185	204

## RESEARCH DESK

Sacchitanand Uttekar - VP - Research (Derivatives & Technicals)

Bhavik Patel - Sr. Technical Analyst (Currency & Commodities)

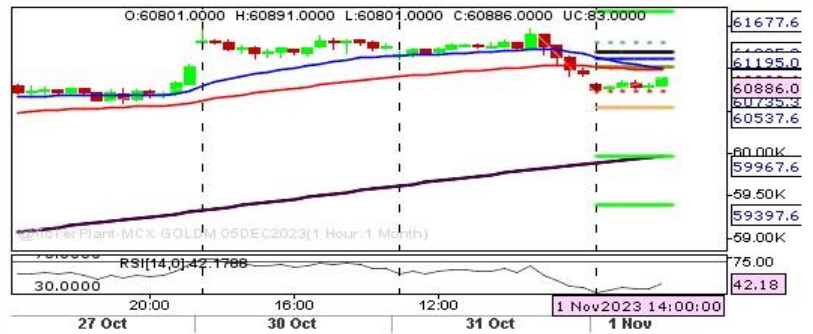
COUNTRY	TIME	ECONOMIC EVENT	SURVEY	PREVIOUS

**Disclaimer:** Investments in securities market are subject to market risk, read all the related documents carefully before investing.

The securities quoted are for illustration only and are not recommendatory | Registration granted by SEBI and certification from NISM in no way guarantee performance of the intermediary or provide any assurance of returns to investors.

**Disclaimer:** This document is for private circulation and information purpose only and should not be regarded as an investment, trading, taxation-legal or price-risk management advice. In no circumstances it is considered as an offer to sell or a solicitation of any offer to buy or sell the Currency derivatives mentioned herein. We and our affiliates, group-companies, directors and employees, and directors and employees of our affiliates and group-companies, including persons involved in the preparation or issuance of this material may (a) have positions in Currency (derivatives or physical) mentioned hereby or (b) have other positions which might have conflicting interest with respect to any related information. The information contained hereby may have been taken from sources which we believe are reliable. We do not guarantee that such information is accurate or complete and it should not be relied upon as such. Any opinion expressed reflects judgments at this date & are subject to change without notice. Risk of loss in Currency derivatives trading can be substantial. Persons trading in Currency Derivatives should consider the suitability of trading based upon their resources, risk appetite & other relevant information; and understand that statements regarding future prospects may not be realized.

## GOLD CHART (Hourly)



Gold has traded strong on the upside side due to escalation of Middle East. Buy on dips should be the strategy around 60800 for tgt of 61500 and stoploss of 60600.

## CRUDE CHART (Hourly)



Crude Oil is looking at some profit booking. Crude oil is below 200 DMA so sell on rise near 6850 for tgt of 6700 and stoploss of 6950.

## BASE METAL UPDATE

Base metals are trading mixed as yesterday's weak European PMI was negative for base metals. Nickel continues to outperform while Aluminum continues to underperform.