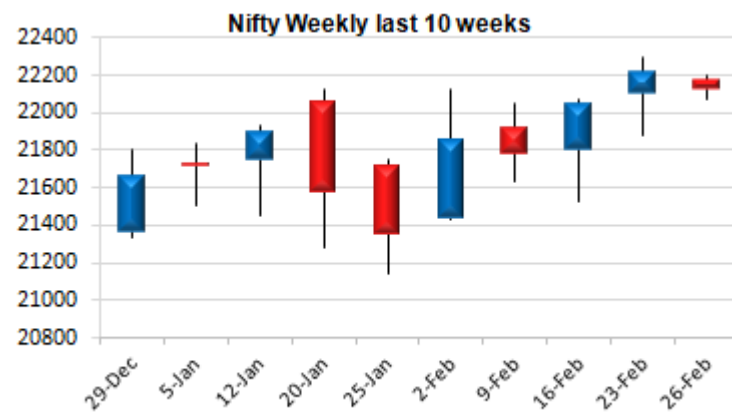
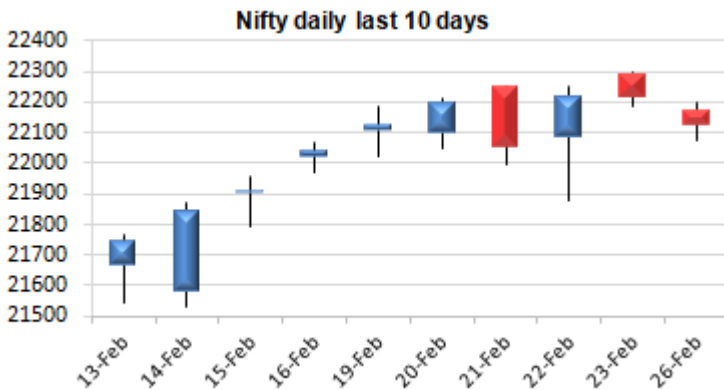


Date: 27 Feb 2024

* Sensex 72790.13 - 352.67

* Nifty 22122.05 - 90.65

* Bank Nifty 46576.50 - 235.25



*Blue candle → Close rate > Open rate * Red candle → Close rate < Open rate

Market Preview

Nifty slips to end near 22100 zone

Nifty index after finding resistance near the 22300 zone on Friday, once again remained rangebound for the entire session resisting near 22200 levels and slipped to some extent with some profit booking witnessed. BankNifty also could not move past the 46900 zone and gradually came down to end near 46600 zone with bias losing steam. Sectorwise Energy was the lone major gainer while IT, Metals, Banking stocks and Pharma were among the laggards. The market breadth turned slightly weak with the advance decline indicating a ratio of 2:3 at close.

Market Forecast

Nifty daily range 22000-22250

Nifty index after making the new high near 22300 zone took a breather and with some cooling off witnessed, it has slipped to close near 22100 levels with 22000 zone maintained as the psychological and important support from current levels. The overall bias is maintained strong and with some revival expected, the index would once again regain strength to carry on the upward move for next targets of 22400 and 22800 levels. BankNifty as compared to Nifty index is witnessing sluggishness and with near-term support maintained near the 50EMA level of 46200 zone, it would need to breach above the 47300 band to trigger for fresh upward move. The support for the day is seen at 72400/22000 level while the resistance would be seen at 73300/22250. BankNifty would have the daily range of 46300-47000 levels.

Daily Trend turned Up

Scrip Name	LCP	Curr Trnd	Reversal
APOLLOTYRE	526.25	-4	524.45
BEML	3073.15	-1	3044.35
BIRLACORPN	1742.8	-4	1713
CENTURYTEX	1491.6	-2	1438.3
GODREJIND	810.3	-3	804.95
HDFCAMC	3880.9	-5	3855.75
HUDCO	203.45	-13	199.8
IRBINFRA	67.1	-1	67.05
POWERGRID	287.8	-3	285.4
SRF	2400.55	-1	2390.25
TVSMOTOR	2162.1	-1	2134.2
VRLLG	596.35	-16	581.05

* Trends turned Up after a significant period

Daily Trend turned Down

Scrip Name	LCP	Curr Trnd	Reversal
BALRAMCHIN	375.1	5	378.5
CEATLTD	2879.55	9	2905.15
CHAMBLFERT	357.15	7	367.9
INDIACEM	239.1	6	242.95
JINDALSTEL	771.3	4	776.4
JUBLFOOD	486.5	8	492.5
NAVINFLUOR	3108.9	9	3151.4
NBCC	139.7	4	143.05
PEL	909.55	8	913.6
PIDILITIND	2717.4	6	2729.1
TATACHEM	967.7	9	974.2
TITAN	3622.5	11	3671.2

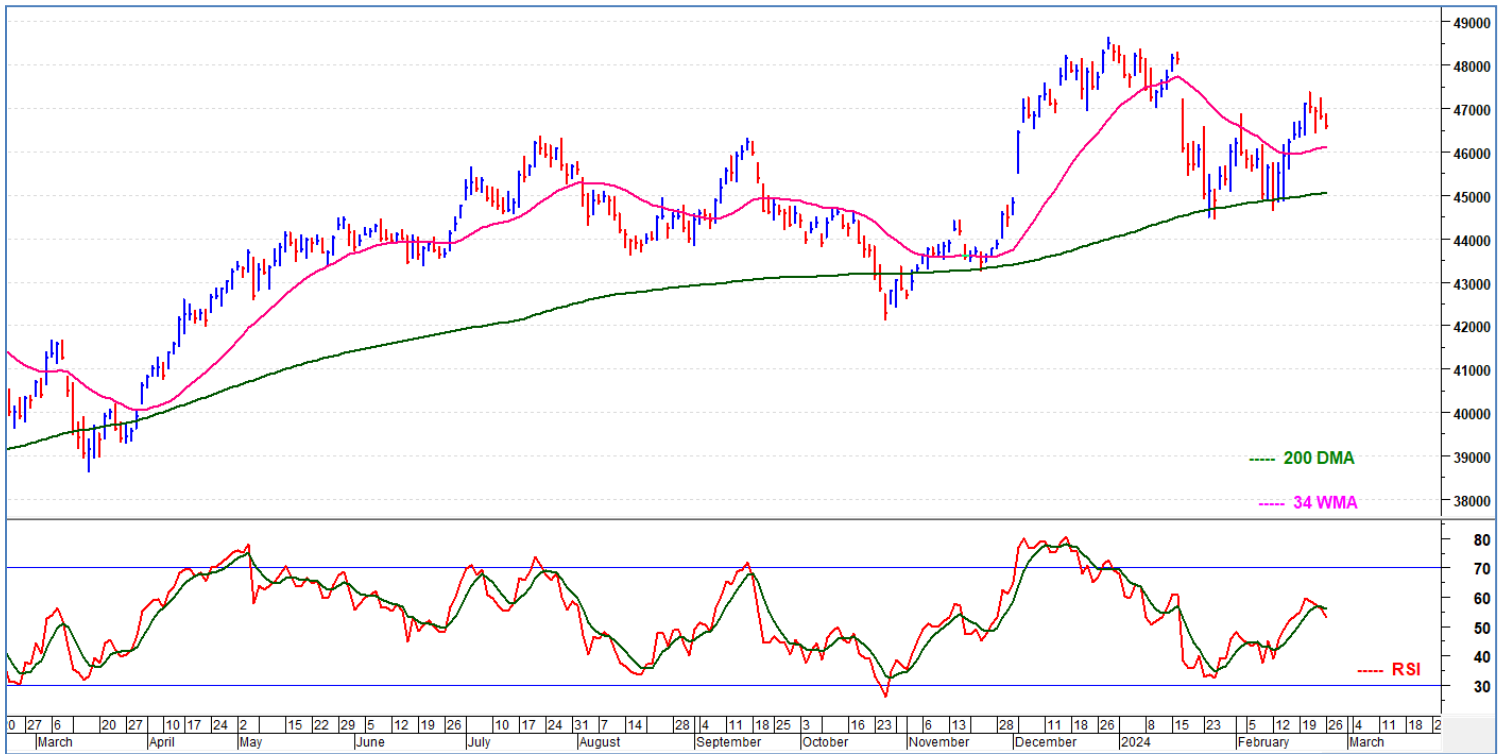
* Trends turned Down after a significant period

Indices	Period	Closing	% Chng	Trend	Reversal	2 Sup	1 Sup	Pivot	1 Res	2 Res
Nifty	Daily	22122.05	-0.41%	-1	22215.45	22006	22064	22133	22191	22260
	Weekly	22212.70	0.78%	1	22134.50	21706	21959	22128	22382	22551
	Monthly	21725.70	-0.03%	3	21154.55	20675	21201	21662	22188	22649
Bank Nifty	Daily	46576.50	-0.50%	-1	46864.95	46281	46429	46661	46809	47041
	Weekly	46811.75	0.92%	1	46430.50	45785	46299	46831	47344	47877
	Monthly	45996.80	-4.75%	-1	47222.95	42271	44134	46292	48155	50313
Sensex	Daily	72790.13	-0.48%	-1	73079.00	72424	72607	72850	73033	73275
	Weekly	73142.80	0.99%	1	72897.05	71177	72160	73064	74047	74952
	Monthly	71752.11	-0.68%	3	70393.90	68301	70027	71727	73453	75153

Nifty Daily chart with RSI indicator:

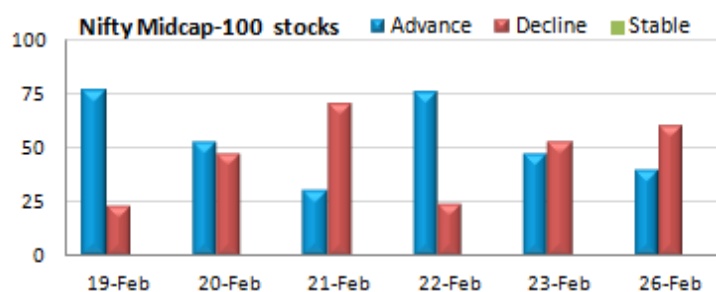
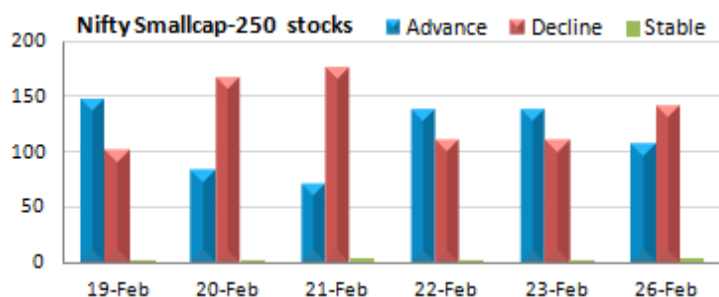


BankNifty Daily chart with RSI indicator:



Gainers - Losers (Nifty 500 stocks)

Gainers				Losers			
Scrip Name	LCP	% Change	Volume	Scrip Name	LCP	% Change	Volume
Data Patterns	2572.3	8.9	2464369	Rain Industries	190.15	-7.83	21712081
Adani Energy	1176.15	8.72	8951359	Alkem Lab	5061.85	-6.63	2521293
Sobha	1584.2	8.49	614115	New India Assur	265.65	-5.04	2825341
PB Fintech	1098.85	7.21	5565231	Gujarat Pipavav	203.6	-4.66	6878259
360 ONE WAM	769.6	6.64	1134196	General Insuran	401.9	-4.57	3183394
Infibeam Avenue	36.75	6.52	90814427	Vodafone Idea	16.85	-3.99	643249215
Bharat Dynamics	1886.25	5.54	2832560	Usha Martin	320.25	-3.96	1626717



Breakouts - Cross above 200 DMA

Company Name	LCP	Change %	200 DMA
MCON Rasayan	144.8	8.15	133.89
Kanoria Chem	133	6.28	125.14
Refex Ind	637.55	4.06	612.65
Hilton Metal	151	1.48	148.8
Elin Electronic	159.85	1.26	157.86
Precision Camsh	235.85	1.08	233.33
Gokul Agro	115	0.64	114.27
Brookfield Ind	253.8	0.51	252.52
Mirza Intl	49.85	0.44	49.63
CCL Products	640.45	0.42	637.79
Dangee Dums	12.15	0.41	12.1
TTK Prestige	765.4	0.01	765.32

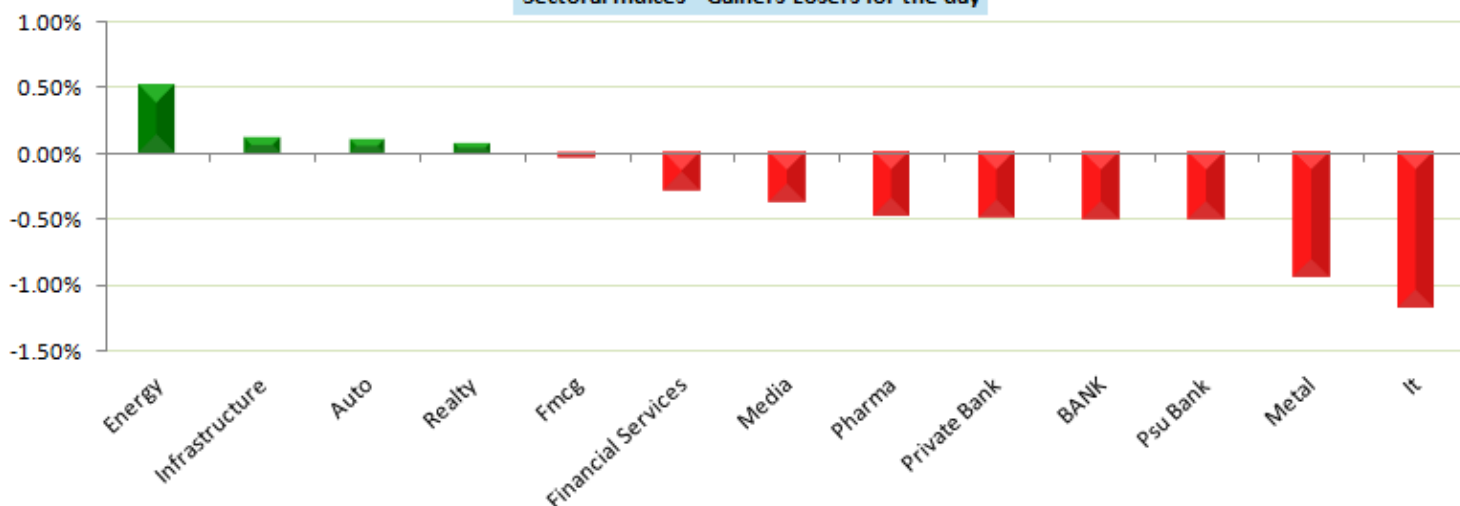
Breakouts - Cross below 200 DMA

Company Name	LCP	Change %	200 DMA
Berger Paints	561.1	-1.8	571.41
Osia Hyper Reta	46.75	-1.45	47.44
Divis Labs	3611.9	-0.93	3645.69
CG Consumer	290.25	-0.9	292.9
Coromandel Int	1071.9	-0.82	1080.72
Krebs Biochem	72.7	-0.15	72.81
Ashok Leyland	172.4	-0.06	172.51

* Stocks crossing above its Simple Moving Average (200DMA)

* Stocks crossing below its Simple Moving Average (200DMA)

Sectoral Indices - Gainers Losers for the day



Stocks witnessing a volume surge as compared to
their 5 day average volume.

Volume Shockers - NSE					
Company name	LCP	% Chg	Volume	Avg Vol *	% Chg
Pilani Invest	3668	14.4	232964	8276	2715
Deep Energy Res	205.9	19.99	455228	19859	2192
UCAL Fuel	172.35	6.32	525610	29047	1710
Total Transport	120	3.99	301130	16986	1673
Industrial Inv	240	-2.85	42614	2564	1562
Alkem Lab	5071.9	-6.44	2361431	148690	1488
Transwind Infra	36.2	4.93	124000	10400	1092
Kellton Tech	107.95	8.17	10213730	938955	988
Avro India	152.6	19.97	306046	29494	938
Wonder Elect.	395	6.35	52804	5373	883
Kanoria Chem	131.5	5.5	416381	45598	813
Jay BharatMarut	137	7.79	1387124	162176	755
Mahindra Holida	433.35	5.86	1268215	148856	752
Greenply Ind	277.7	10.75	4767532	581789	719
Regency Ceramic	35.9	4.97	8547	1047	717
Assoc Alcohol	578.9	12.51	1427808	177695	704
Annapurna	419.95	5.73	379000	52200	626
Ideaforge Tech	832.5	6.71	4512231	621641	626
INFOLLION	235	14.58	177600	25440	598
Yasho Ind.	2253.35	5.01	436847	64635	576

* the Average Volume of last 5 days

Watch out for the stocks that have seen a huge spurt
in its share price over the last three days

Price Shockers - NSE					
Company name	LCP	3 days *	% Chg	Volume	
Tarmat	144.2	91.55	57.51	5182918	
SML Isuzu	2408.95	1714.7	40.49	1350517	
Moksh Ornaments	25.45	18.95	34.3	8074758	
Salzer Electro	763.6	571.85	33.53	1362031	
Chemfab Alkalis	556.35	421.65	31.95	231479	
Panache Digilif	89.5	70.2	27.49	70600	
Yasho Ind.	2202.35	1734.4	26.98	467317	
Assoc Alcohol	576.6	468.5	23.07	1495291	
Deep Energy Res	205.9	167.6	22.85	462343	
Voltamp Trans	8853.55	7278.55	21.64	132723	
Megatherm	344.05	284.2	21.06	459600	
E Factor Experi	162	134	20.9	110400	
BF Utilities	922.3	766.35	20.35	1937500	
Megasoft	99.1	82.55	20.05	467777	
Marathon Realty	488.75	410.05	19.19	290077	
Pilani Invest	3645.9	3065.7	18.93	244465	
Capital Trust	136.25	115.8	17.66	468191	
Greenply Ind	277.5	235.95	17.61	5482849	
AVG Logistics	622.45	529.5	17.55	1034049	
Pearl Polymers	41.05	35.15	16.79	1029002	

* the % price rise of the last 3 days

Nifty 50 stocks - Summary Details

Symbol	LTP	Chng	% Chng	Volume (lacs)	Turnover (crs.)	52w High	Diff with 52w H	52w Low	Diff with 52w L	365 days % chng	30 days % chng
NIFTY 50	22122.05	-90.65	-0.41%	2077.63	20849.04	22297.50	0.79%	16828.35	31.46%	4.03%	27.18%
ADANIENT	3328.00	54.70	1.67%	16.95	562.56	3344.00	0.48%	1103.75	201.52%	13.12%	148.80%
ADANIPTS	1335.00	14.30	1.08%	28.01	373.68	1343.00	0.60%	533.65	150.16%	15.21%	136.30%
APOLLOHOSP	6596.75	-177.30	-2.62%	4.53	301.21	6874.45	4.04%	4168.00	58.27%	9.81%	51.52%
ASIANPAINT	2868.00	-117.95	-3.95%	35.24	1012.47	3568.00	19.62%	2700.10	6.22%	1.25%	9.04%
AXISBANK	1084.00	-12.80	-1.17%	53.54	581.35	1151.85	5.89%	814.30	33.12%	5.23%	28.82%
BAJAJ-AUTO	8450.00	13.05	0.15%	3.46	293.25	8650.00	2.31%	3625.60	133.06%	11.05%	119.14%
BAJAJFINSV	1611.95	-4.60	-0.28%	7.42	120.21	1741.00	7.41%	1215.00	32.67%	-0.83%	18.95%
BAJFINANCE	6639.00	-58.85	-0.88%	8.92	593.54	8192.00	18.96%	5485.70	21.02%	-5.47%	7.40%
BHARTIARTL	1110.75	-15.00	-1.33%	31.86	353.77	1200.65	7.49%	735.80	50.96%	-3.00%	48.69%
BPCL	626.00	8.05	1.30%	116.32	717.79	687.95	9.01%	314.05	99.33%	30.26%	94.60%
BRITANNIA	4900.00	-36.35	-0.74%	0.78	38.30	5386.05	9.02%	4153.00	17.99%	-4.00%	11.12%
CIPLA	1466.00	-0.40	-0.03%	8.98	132.18	1482.35	1.10%	852.00	72.07%	7.06%	52.46%
COALINDIA	443.00	-0.90	-0.20%	75.70	336.24	487.60	9.15%	207.60	113.39%	14.00%	104.52%
DIVISLAB	3573.25	-74.85	-2.05%	4.04	145.28	4074.40	12.30%	2730.00	30.89%	1.93%	25.14%
DRREDDY	6435.00	-7.15	-0.11%	2.18	140.28	6494.05	0.91%	4297.00	49.76%	10.02%	43.44%
EICHERMOT	3955.00	27.95	0.71%	4.74	187.30	4200.00	5.83%	2836.00	39.46%	8.59%	22.51%
GRASIM	2183.55	-10.85	-0.49%	9.05	198.33	2244.00	2.69%	1527.05	42.99%	5.68%	39.31%
HCLTECH	1646.90	-18.85	-1.13%	18.44	304.21	1697.35	2.97%	1016.25	62.06%	7.45%	52.14%
HDFCBANK	1421.95	1.35	0.10%	117.53	1675.94	1757.50	19.09%	1363.55	4.28%	-1.00%	-10.60%
HDFCLIFE	575.70	-5.00	-0.86%	42.00	242.10	710.60	18.98%	457.80	25.75%	0.29%	20.27%
HEROMOTOCO	4496.90	-22.35	-0.49%	6.05	272.11	4949.05	9.14%	2246.00	100.22%	1.74%	81.81%
HINDALCO	505.55	-12.80	-2.47%	76.05	386.21	620.50	18.53%	381.00	32.69%	-8.61%	24.83%
HINDUNILVR	2401.95	7.85	0.33%	8.32	198.83	2769.65	13.28%	2346.75	2.35%	-1.41%	-3.63%
ICICIBANK	1053.75	-7.55	-0.71%	78.76	831.38	1070.00	1.52%	810.30	30.04%	5.08%	26.39%
INDUSINDBK	1467.00	-13.30	-0.90%	20.78	305.73	1694.50	13.43%	990.20	48.15%	-2.10%	37.17%
INFY	1660.00	-16.85	-1.00%	27.82	460.78	1733.00	4.21%	1185.30	40.05%	0.46%	8.14%
ITC	409.15	-2.25	-0.55%	79.82	326.83	499.70	18.12%	369.65	10.69%	-9.71%	6.83%
JSWSTEEL	808.75	-12.25	-1.49%	11.89	96.53	895.75	9.71%	649.05	24.61%	0.65%	19.85%
KOTAKBANK	1707.00	-17.00	-0.99%	59.58	1017.88	2064.40	17.31%	1643.50	3.86%	-2.51%	1.57%
LT	3470.35	82.40	2.43%	41.22	1428.21	3737.90	7.16%	2082.10	66.68%	-5.72%	58.76%
LTIM	5465.00	-77.65	-1.40%	2.27	124.36	6442.00	15.17%	4132.20	32.25%	0.87%	14.20%
M&M	1926.00	-3.95	-0.20%	24.36	471.96	1951.00	1.28%	1123.40	71.44%	18.00%	50.75%
MARUTI	11473.05	-62.55	-0.54%	2.78	318.84	11720.00	2.11%	8130.00	41.12%	16.75%	33.20%
NESTLEIND	2579.00	-	#VALUE!	6.62	170.63	2769.30	6.87%	1788.00	44.24%	3.90%	-86.19%
NTPC	337.50	-0.25	-0.07%	77.11	259.52	348.05	3.03%	166.80	102.34%	7.31%	97.51%
ONGC	269.75	-2.45	-0.90%	86.59	233.62	281.15	4.05%	146.50	84.13%	16.30%	75.61%
POWERGRID	287.55	5.60	1.99%	310.12	892.52	291.50	1.36%	159.30	80.51%	14.85%	31.11%
RELIANCE	2975.10	-12.15	-0.41%	37.56	1117.25	2995.10	0.67%	2180.00	36.47%	10.39%	25.32%
SBILIFE	1552.00	22.85	1.49%	12.83	197.99	1553.40	0.09%	1054.00	47.25%	10.74%	36.28%
SBIN	758.40	-0.65	-0.09%	113.55	862.18	777.50	2.46%	501.55	51.21%	23.88%	45.68%
SUNPHARMA	1554.15	-7.10	-0.45%	9.75	151.76	1568.45	0.91%	922.45	68.48%	14.10%	60.87%
TATACONSUM	1178.00	17.70	1.53%	12.92	150.90	1190.95	1.09%	686.60	71.57%	2.07%	62.02%
TATAMOTORS	937.00	-0.40	-0.04%	56.00	526.03	950.00	1.37%	400.45	133.99%	15.46%	119.15%
TATASTEEL	142.60	-2.85	-1.96%	225.69	324.24	147.40	3.26%	101.55	40.42%	8.75%	32.53%
TCS	4001.90	-50.20	-1.24%	13.79	551.96	4184.75	4.37%	3070.25	30.34%	6.35%	19.16%
TECHM	1295.80	-26.45	-2.00%	11.96	155.77	1416.30	8.51%	981.05	32.08%	0.02%	18.16%
TITAN	3619.00	-72.95	-1.98%	5.47	199.06	3886.95	6.89%	2321.00	55.92%	-2.08%	53.89%
ULTRACEMCO	9938.00	-62.90	-0.63%	1.63	161.51	10526.00	5.59%	6991.00	42.15%	0.32%	38.58%
UPL	488.75	0.05	0.01%	22.53	110.29	759.95	35.69%	452.15	8.09%	-9.05%	-33.81%
WIPRO	531.50	-4.65	-0.87%	44.10	234.16	545.90	2.64%	352.00	50.99%	14.07%	36.32%

Note: 52 week high & 52 week low prices are adjusted for Bonus, Split & Rights Corporate actions.

Color code for Stocks closer to 52-week high :

	- within 0% and 2%
	- within 2% and 5%
	- within 5% and 7%

Color code for Stocks closer to 52-week low :

	- within 0% and 2%
	- within 2% and 5%
	- within 5% and 7%

365 days % Change and 30 days % Change value are adjusted With respect to corporate actions

Disclaimer / Disclosures:

ANALYST CERTIFICATION

I, Mrs. Vaishali Parekh B.com, Research Analyst, author and the name subscribed to this report, hereby certify that all of the views expressed in this research report accurately reflect our views about the subject issuer(s) or securities. We also certify that no part of our compensation was, is, or will be directly or indirectly related to the specific recommendation(s) or view(s) in this report.

Terms & conditions and other disclosures:

Prabhudas Lilladher Pvt. Ltd, Mumbai, India (hereinafter referred to as "PL") is engaged in the business of Stock Broking, Portfolio Manager, Depository Participant and distribution for third party financial products. PL is a subsidiary of Prabhudas Lilladher Advisory Services Pvt Ltd. which has its various subsidiaries engaged in business of commodity broking, investment banking, financial services (margin funding) and distribution of third party financial/other products, details in respect of which are available at www.plindia.com

This document has been prepared by the Research Division of PL and is meant for use by the recipient only as information and is not for circulation. This document is not to be reported or copied or made available to others without prior permission of PL. It should not be considered or taken as an offer to sell or a solicitation to buy or sell any security.

The information contained in this report has been obtained from sources that are considered to be reliable. However, PL has not independently verified the accuracy or completeness of the same. Neither PL nor any of its affiliates, its directors or its employees accepts any responsibility of whatsoever nature for the information, statements and opinion given, made available or expressed herein or for any omission therein.

Recipients of this report should be aware that past performance is not necessarily a guide to future performance and value of investments can go down as well. The suitability or otherwise of any investments will depend upon the recipient's particular circumstances and, in case of doubt, advice should be sought from an independent expert/advisor.

Either PL or its affiliates or its directors or its employees or its representatives or its clients or their relatives may have position(s), make market, act as principal or engage in transactions of securities of companies referred to in this report and they may have used the research material prior to publication.

PL may from time to time solicit or perform investment banking or other services for any company mentioned in this document.

PL is registered as Research Analyst under Securities and Exchange Board of India (Research Analysts) Regulations, 2014 PL submits that no material disciplinary action has been taken on us by any Regulatory Authority impacting Equity Research Analysis activities.

PL or its research analysts or its associates or his relatives do not have any financial interest in the subject company.

PL or its research analysts or its associates or his relatives do not have actual/beneficial ownership of one per cent or more securities of the subject company at the end of the month immediately preceding the date of publication of the research report.

PL or its research analysts or its associates or his relatives do not have any material conflict of interest at the time of publication of the research report.

PL or its associates might have received compensation from the subject company in the past twelve months.

PL or its associates might have managed or co-managed public offering of securities for the subject company in the past twelve months or mandated by the subject company for any other assignment in the past twelve months.

PL or its associates might have received any compensation for investment banking or merchant banking or brokerage services from the subject company in the past twelve months.

PL or its associates might have received any compensation for products or services other than investment banking or merchant banking or brokerage services from the subject company in the past twelve months PL or its associates might have received any compensation or other benefits from the subject company or third party in connection with the research report.

PL encourages independence in research report preparation and strives to minimize conflict in preparation of research report. PL or its analysts did not receive any compensation or other benefits from the subject Company or third party in connection with the preparation of the research report. PL or its Research Analysts do not have any material conflict of interest at the time of publication of this report.

It is confirmed that Mrs. Vaishali Parekh B.com, Research Analyst of this report has not received any compensation from the companies mentioned in the report in the preceding twelve months compensation of our Research Analysts is not based on any specific merchant banking, investment banking or brokerage service transactions.

The Research analysts for this report certifies that all of the views expressed in this report accurately reflect his or her personal views about the subject company or companies and its or their securities, and no part of his or her compensation was, is or will be, directly or indirectly related to specific recommendations or views expressed in this report.

The research analysts for this report has not served as an officer, director or employee of the subject company PL or its research analysts have not engaged in market making activity for the subject company

Our sales people, traders, and other professionals or affiliates may provide oral or written market commentary or trading strategies to our clients that reflect opinions that are contrary to the opinions expressed herein, and our proprietary trading and investing businesses may make investment decisions that are inconsistent with the recommendations expressed herein. In reviewing these materials, you should be aware that any or all of the foregoing, among other things, may give rise to real or potential conflicts of interest.

PL and its associates, their directors and employees may (a) from time to time, have a long or short position in, and buy or sell the securities of the subject company or (b) be engaged in any other transaction involving such securities and earn brokerage or other compensation or act as a market maker in the financial instruments of the subject company or act as an advisor or lender/borrower to the subject company or may have any other potential conflict of interests with respect to any recommendation and other related information and opinions.