

Dt.: 11<sup>th</sup> May, 2024

INDEX	NIFTY	BANKNIFTY	USDINR
Outlook	Neutral	Neutral	Neutral

INSTITUTIONAL TRADING ACTIVITY IN CRS.			
Category	Buy Value	Sell Value	Net Value
FII	13,721.97	11,149.59	+2,572.38
DII	16,933.99	14,169.53	+2,764.46

TRADE STATISTICS FOR 10/06/2024			
Instrument	No. of Contracts	Turnover (Cr.)	Put Call Ratio
Index Fut.	564852	36787.28	
Stock Fut.	1542959	122927.62	
Index Opt.	322003832	24924908.41	0.82
Stock Opt.	5505811	457622.69	
F&O Total	329617454	25542246	

**Nifty Action: 10/06/2024**

Updated: 10-Jun-2024 15:30 IST

23,259.20 -30.95 (-0.13%)	Open 23,319.15
High 23,411.90	Low 23,227.15

Advances - 27 Declines - 23 Unchanged - 0

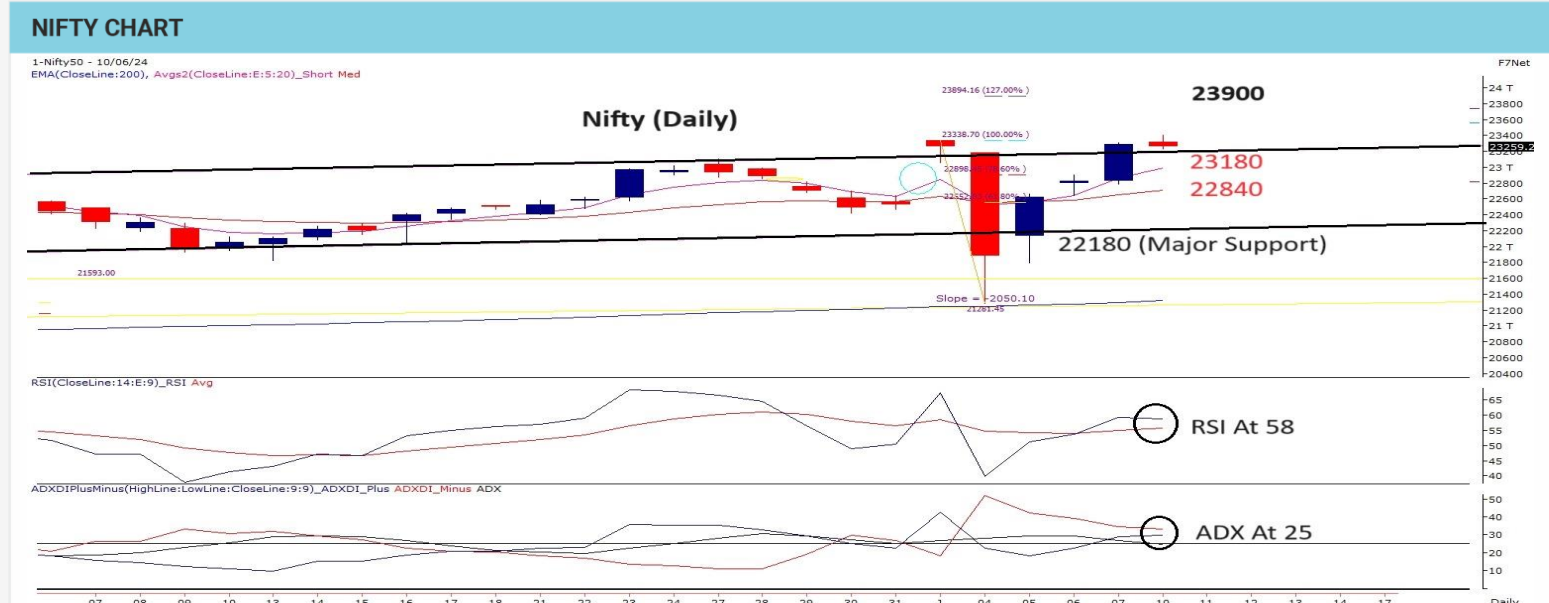


Source : NSE India

PIVOT TABLE					
	R2	R1	PIVOT	S1	S2
NIFTY	24000	23777	23150	22500	22010
BANKNIFTY	52400	51730	50120	49677	48900

NIFTY FUT.			
	TRIGGER	T1	T2
Above	23300	23880	24200
Below	22700	22500	22250

BANK NIFTY FUT.			
	TRIGGER	T1	T2
Above	49800	52180	52900
Below	49300	49990	49200



Nifty registered a fresh life high in yesterday's trading session but closed the day below 23264. It is holding itself outside the high impact trading range of 04th June'24 with its high around 23180. This level now serves as an ideal trailing stop to gauge sustenance of ongoing bullish momentum. Cool off in event volatility is evident as India VIX continues to stabilize its movement below 18 level. Both its relative strength indicators are trending within their respective positive zone; with ADX about to break above its 25 level; indicating upcoming momentum. Weekly options data indicates confident writing base at 23000 while its upper end could see a shift towards 23500 to 23800 during the week. Sustenance above 23350 would serve as a reassuring sign for further acceleration in trend momentum which could push the index higher towards 23900. Traders may continue to add longs on decline & may chase breakout moves once above 23560 towards 23900.

**Trade Scanner:** ABBOTINDIA, ALKEM, APOLLOTYRE, APOLLOHOSP, BERGERPAINT, CHAMBALFERT, CIPLA, DALMIABHARAT, SRF, TATACONSUM, ABFRL, BHEL, HEDFCAMC, INFY, .

**RESEARCH DESK:** Sacchitanand Uttekar - VP - Research (Derivatives & Technicals)

**Disclaimer:** Investments in securities market are subject to market risk, read all the related documents carefully before investing. The securities quoted are for illustration only and are not recommendatory | Registration granted by SEBI and certification from NISM in no way guarantee performance of the intermediary or provide any assurance of returns to investors. **Disclaimer:** This document is for private circulation and information purpose only and should not be regarded as an investment, trading, taxation, legal or price risk management advice. In no circumstances it is considered as an offer to sell or a solicitation of any offer to buy or sell the Equity derivatives mentioned herein. We and our affiliates, group companies, directors and employees, and directors and employees of our affiliates and group companies, including persons involved in the preparation or issuance of this material may (a) have positions in Equity (derivatives or physical) mentioned hereby or (b) have other positions which might have conflicting interest with respect to any related information. The information contained hereby may have been taken from sources which we believe are reliable. We do not guarantee that such information is accurate or complete and it should not be relied upon as such. Any opinion expressed reflects judgments at this date and are subject to change without notice. Risk of loss in Equity derivatives trading can be substantial. Persons trading in Equity Derivatives should consider the suitability of trading based upon their resources, risk appetite and other relevant information; and understand that statements regarding future prospects may not be realized.