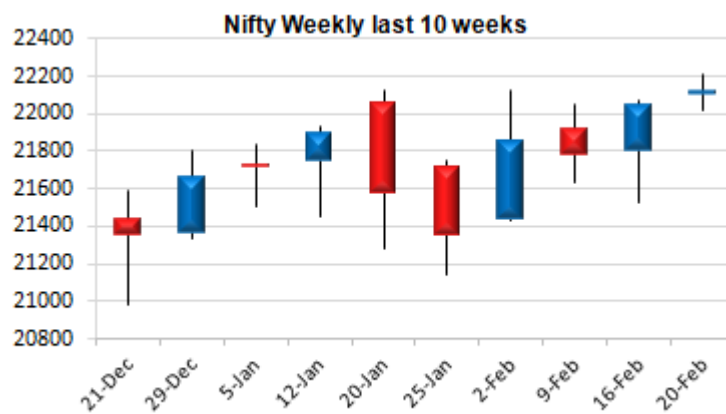
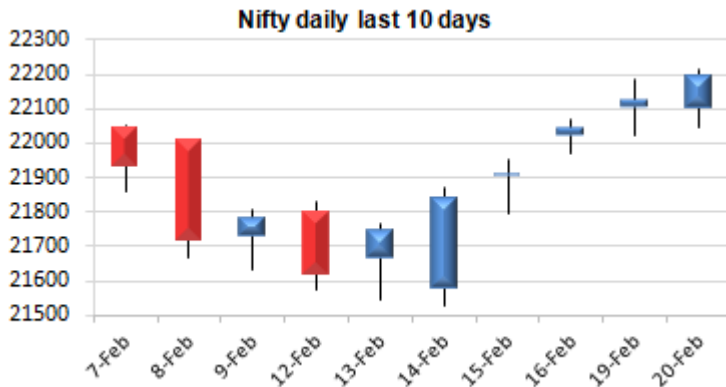


Date: 21st Feb 2024

* Sensex 73057.40 + 349.24

* Nifty 22196.95 + 74.70

* Bank Nifty 47094.20 + 558.70



*Blue candle → Close rate > Open rate * Red candle → Close rate < Open rate

Market Preview

Nifty scales 22200 zone

Nifty continue to surge ahead making new highs and has touched the 22200 zone during the intraday session with sentiment much improved and strong upside movement anticipated in the coming days. BankNifty indicating a strong breakout has triggered for fresh upward move with bias turning strong and major frontline banking stocks turning positive. Sectorwise Media, Banking stocks, Financial services and Infra stocks were among the major gainers while IT, Metals and Auto were among the major laggards. The market breadth was overall slightly on the positive side with the advance decline indicating a ratio of 4:3 at close.

Market Forecast

Nifty daily range 22050-22350

Nifty surged ahead to make new high once again breaching above the 22200 zone during the intraday session with the index positioned strongly with further rise anticipated in the coming days. The near-term target for the index would be 22400 levels and with strength sustaining, it can march ahead to next target of 22800 levels with near-term support maintained at 22000 zone. BankNifty has indicated a breakout above the 46800 zone to anticipate for further fresh upward with bias and sentiment turning much positive. The index can carry on with the momentum for next targets of 48200 and 48800 levels in the coming days provided the important support of 46800 zone is sustained. The support for the day is seen at 22050 while the resistance is seen at 22350. BankNifty would have the daily range of 46700-47600 levels.

Daily Trend turned Up

Scrip Name	LCP	Curr Trnd	Reversal
BHEL	230.9	-10	224.7
FORTIS	443.25	-8	433.15
FSL	203.45	-7	199.9
GLAXO	2289.05	-7	2260.35
GMDC	411	-7	399.35
GODREJIND	810.6	-12	807.3
HEIDELBERG	216.5	-13	214.45
INDIGO	3114.9	-7	3069.2
NBCC	142.6	-10	138.95
POWERGRID	287.9	-2	278.75
TATAPOWER	378.95	-7	378
ZEETELE	192.65	-2	185.45

* Trends turned Up after a significant period

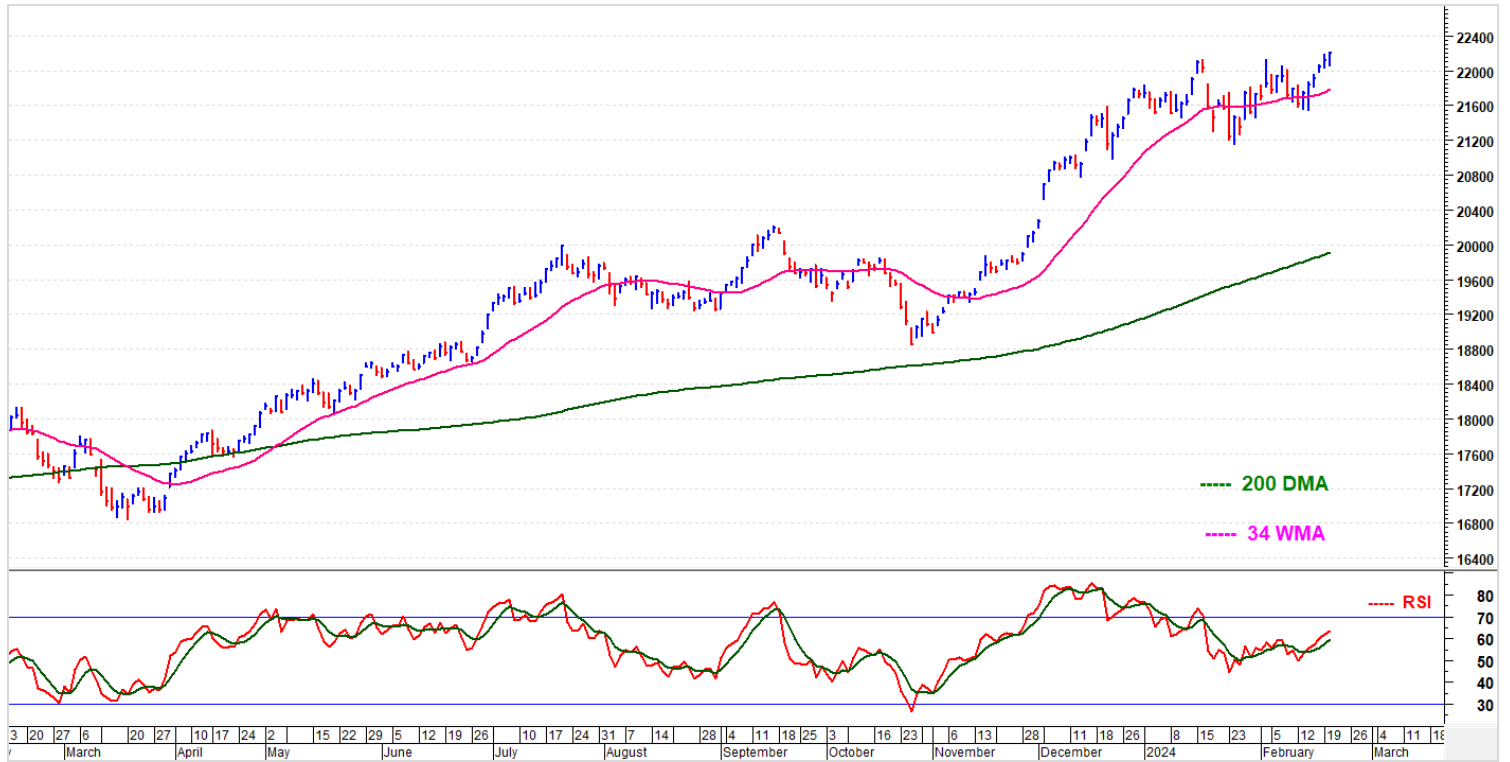
Daily Trend turned Down

Scrip Name	LCP	Curr Trnd	Reversal
ADANIEN	3228.6	2	3235.15
APOLLOTYRE	518.2	2	522.35
BAJAJ AUTO	8295.2	7	8407.6
BALKRISIND	2294.55	4	2315.75
BIRLACORPN	1698.05	2	1729.8
CHOLAFIN	1099.9	5	1116.45
COLPAL	2536.15	5	2570.95
EICHERMOT	3828.1	4	3897.95
FEDERALBNK	154.4	5	156.9
HCLTECH	1663.05	10	1673.3
INFY	1685.25	2	1690.85
JUBLPHARMA	600.8	4	602.15

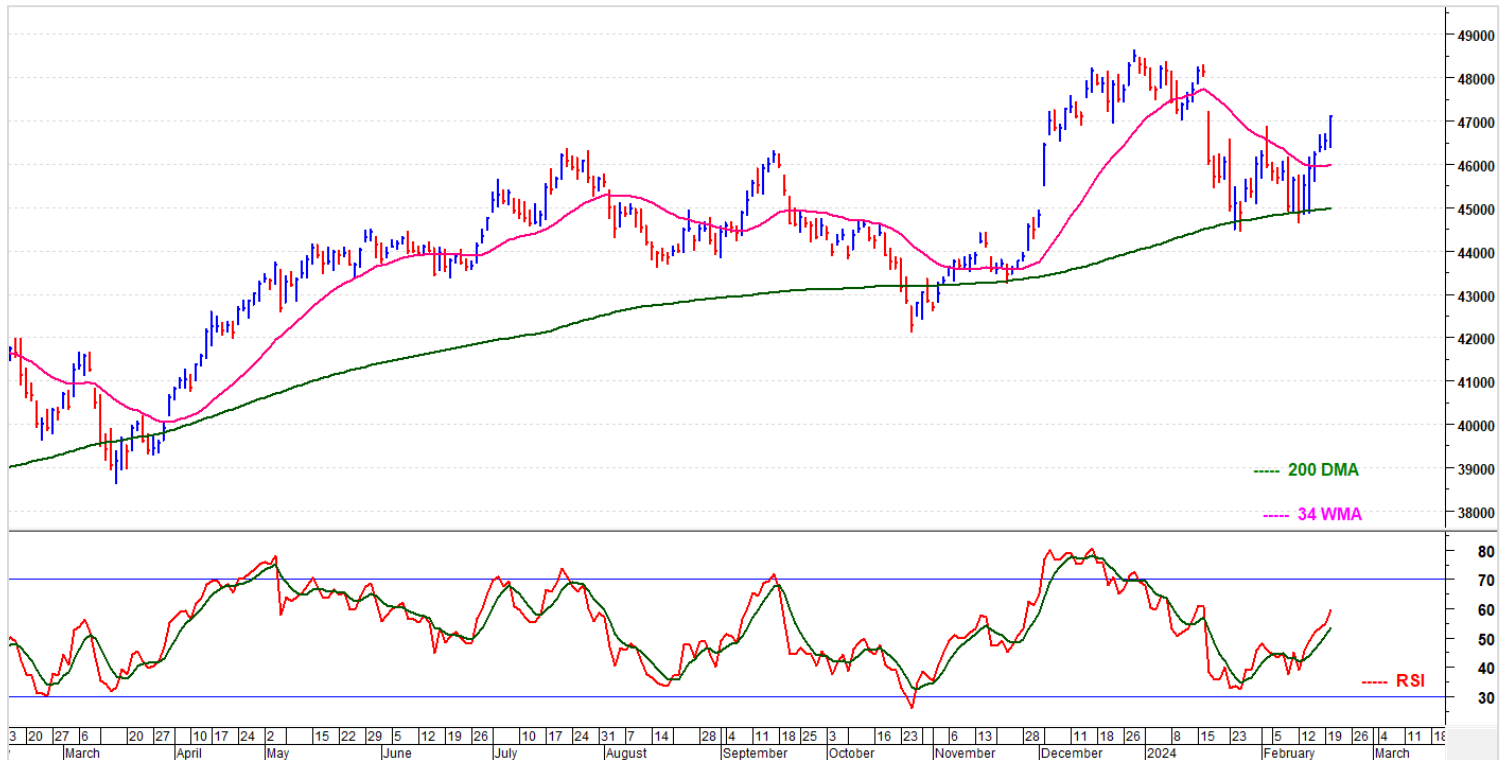
* Trends turned Up after a significant period

Indices	Period	Closing	% Chng	Trend	Reversal	2 Sup	1 Sup	Pivot	1 Res	2 Res
Nifty	Daily	22196.95	0.34%	5	22020.20	21983	22090	22153	22260	22323
	Weekly	22040.70	1.19%	-5	22061.75	21341	21691	21880	22230	22418
	Monthly	21725.70	-0.03%	3	21154.55	20675	21201	21662	22188	22649
Bank Nifty	Daily	47094.20	1.20%	6	46200.85	46097	46596	46866	47365	47635
	Weekly	46384.85	1.64%	-5	46663.05	43844	45115	45904	47175	47964
	Monthly	45996.80	-4.75%	-1	47222.95	42271	44134	46292	48155	50313
Sensex	Daily	73057.40	0.48%	5	72358.40	72279	72668	72899	73289	73520
	Weekly	72426.64	1.16%	-5	72834.95	70445	71436	71800	72791	73156
	Monthly	71752.11	-0.68%	3	70393.90	68301	70027	71727	73453	75153

Nifty Daily chart with RSI indicator:

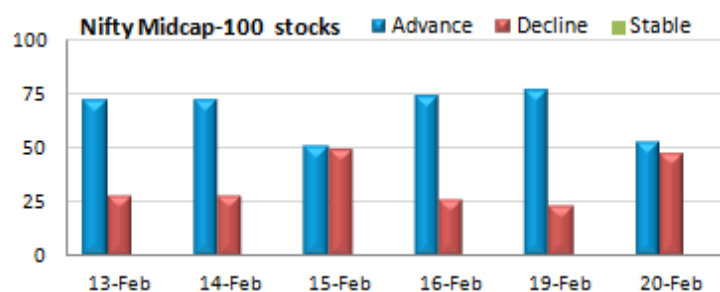
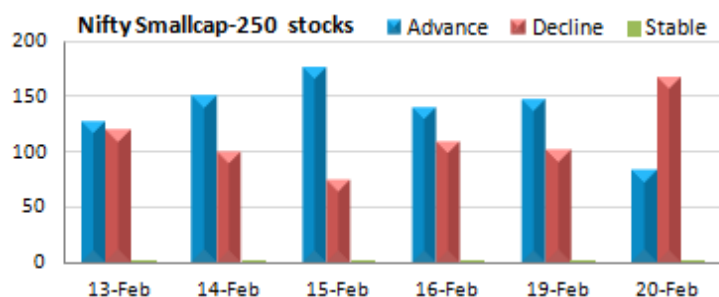


BankNifty Daily chart with RSI indicator:



Gainers - Losers (Nifty 500 stocks)

Gainers				Losers			
Scrip Name	LCP	% Change	Volume	Scrip Name	LCP	% Change	Volume
Allcargo	85.3	13.73	50553876	New India Assur	279.3	-5.79	4301281
Zee Entertain	192.65	7.93	85302095	Federal Bank	154.4	-5.25	33045447
EID Parry	637.95	6.4	4801738	MRPL	273.2	-4.51	13275282
Guj Amb Exports	386.1	6.04	4192138	BEML	3011	-4.14	411185
Home First	928.9	5.21	585925	General Insuran	407.55	-3.98	3618445
One 97 Paytm	376.25	5	1009337	Hero Motocorp	4663.35	-3.9	1153742
TV18 Broadcast	64.4	4.97	9353422	JBM Auto	2289.5	-3.87	267436



Breakouts - Cross above 200 DMA

Company Name	LCP	Change %	200 DMA
Sheetal Cool Pr	447.15	12.26	398.3
WE WIN	74.15	9.84	67.51
Weizmann	113.95	5.95	107.55
Accord Synergy	27.9	4.18	26.78
South West Pinn	155.95	3.84	150.19
Dalmia Sugar	411.9	2.71	401.04
Sapphire Foods	1408	1.25	1390.61
Maithan Alloys	1076.55	1.13	1064.53
Mirza Intl	50.2	0.74	49.83
MCON Rasayan	134	0.66	133.12
Uttam Sugar	376.3	0.39	374.83
M&M Financial	290.15	0.37	289.07
Elin Electronic	158.1	0.36	157.53
Tanla Platforms	1003.65	0.32	1000.42
Heranba	366.9	0.11	366.49
Avenue Supermar	3756.2	0.08	3753.17

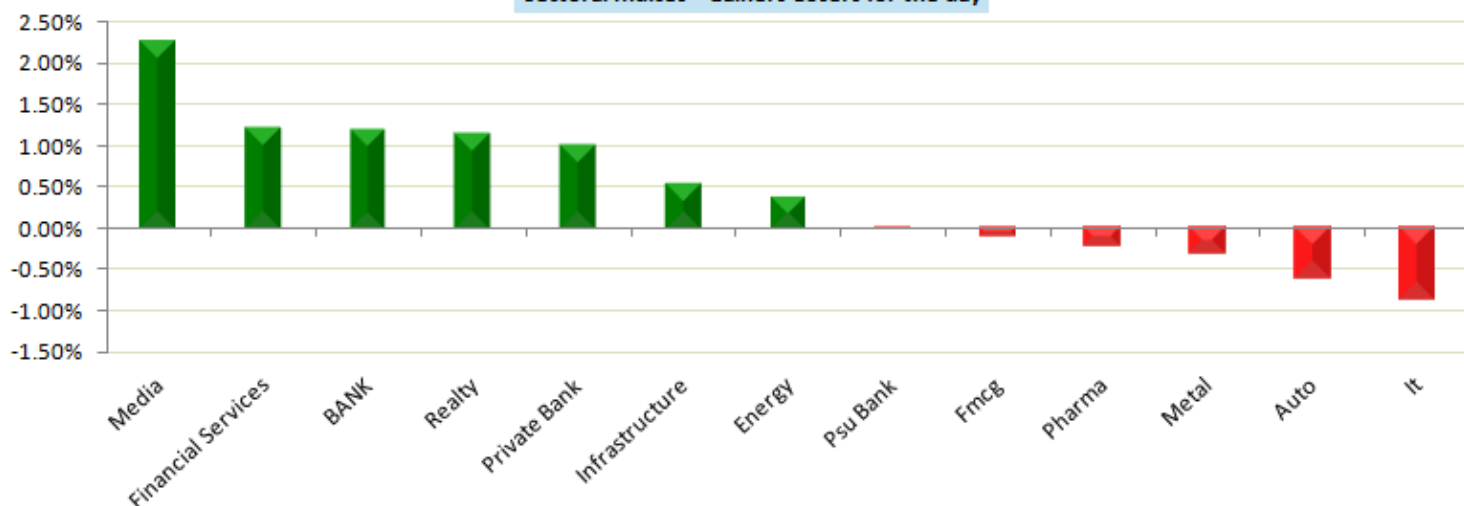
Breakouts - Cross below 200 DMA

Company Name	LCP	Change %	200 DMA
D.K. Enterprise	70.65	-1.75	71.91
Sumeet Ind	3.7	-1.6	3.76
Alkali Metals	118.05	-1.49	119.83
Grindwell Norto	2149	-1.18	2174.62
Suumaya Ind.	8.8	-0.68	8.86
United Polyfab	98.15	-0.52	98.66
Gulf Oil Corp	444.75	-0.51	447.01
Rolex	2201.65	-0.51	2212.87
KPR Mill	719.65	-0.5	723.27
Ester Ind	99.75	-0.47	100.22
Rane Brake	807.1	-0.3	809.55
TMB	491.15	-0.18	492.02
City Union Bank	136.25	-0.02	136.28

* Stocks crossing above its Simple Moving Average (200DMA)

* Stocks crossing below its Simple Moving Average (200DMA)

Sectoral Indices - Gainers Losers for the day



Stocks witnessing a volume surge as compared to
their 5 day average volume.

Volume Shockers - NSE

Company name	LCP	% Chg	Volume	Avg Vol *	% Chg
Whirlpool	1286.7	-3.34	4640800	948113	389
GRP	6087.4	18.59	11082	2400	362
Airo Lam	190.3	19.99	724182	157794	359
Allcargo	85.3	13.73	50553876	11049925	358
Repro India	892.1	14.14	395458	88412	347
Asahi Songwon	326.15	5.84	116085	28393	309
Deepak Fert	514.55	4.07	11983014	2992992	300
TVS Supply	200.45	5.47	7316250	1864468	292
Mangalam Drugs	127.15	10.9	1770912	467086	279
Rajshree Polypa	255.35	-0.83	792736	209561	278
Sheetal Cool Pr	447.15	19.99	555829	149481	272
EID Parry	637.95	6.4	4801738	1293069	271
Sundaram	200.35	7.57	1679914	464934	261
Veto Switch	146.55	10.15	2799188	788921	255
AYM Syntex	84.05	7.62	390027	109980	255
Committed Cargo	73.45	8.57	401600	113280	255
Vidhi Dyestuffs	446.65	6.11	124367	35673	249
EIH	398.3	-1.61	6094323	1757982	247
Harrisons Malay	188.25	9.99	313510	90609	246
P E Analytics	293.5	-1.94	33000	9600	244

* the Average Volume of last 5 days

Watch out for the stocks that have seen a huge spurt
in its share price over the last three days

Price Shockers - NSE

Company name	LCP	3 days *	% Chg	Volume
Megasoft	88.2	69.55	26.82	2826185
Sheetal Cool Pr	447.15	354.75	26.05	555829
Solex Energy	859.95	688.95	24.82	107600
Manaksia Coated	40.15	33.2	20.93	616986
Zodiac Energy	339.15	282.1	20.22	0
GRP	6087.4	5101.4	19.33	11082
Wockhardt	578.65	487.2	18.77	5401529
Indian Hume	299.15	254	17.78	1435011
Jainam Ferro	164.8	140.3	17.46	101000
Airo Lam	190.3	162.1	17.4	724182
Snowman Logist	81.95	69.95	17.16	25813498
Mukta Arts	98.95	84.55	17.03	0
Premier Polyfil	197.6	169.05	16.89	652298
Force Motors	6050.4	5228.75	15.71	218220
AVT Natural	110.6	95.95	15.27	4989378
eMudhra	558.1	484.5	15.19	2052722
Chaman Lal Seti	258.75	225.9	14.54	587788
BF Utilities	800.15	700.95	14.15	891677
Omaxe	115.45	101.25	14.02	2515553
Harrisons Malay	188.25	165.4	13.81	313510

* the % price rise of the last 3 days

Nifty 50 stocks - Summary Details

Symbol	LTP	Chng	% Chng	Volume (lacs)	Turnover (crs.)	52w High	Diff with 52w H	52w Low	Diff with 52w L	365 days % chng	30 days % chng
NIFTY 50	22196.95	74.70	0.34%	2957.05	26872.15	22215.60	0.08%	16828.35	31.90%	1.93%	22.83%
ADANIANT	3235.00	-23.80	-0.73%	14.68	475.25	3308.60	2.22%	1103.75	193.09%	10.56%	87.12%
ADANIPTS	1302.80	-4.20	-0.32%	18.57	241.98	1327.00	1.82%	533.65	144.13%	13.40%	125.84%
APOLLOHOSP	6748.00	96.85	1.46%	5.59	376.51	6785.00	0.55%	4168.00	61.90%	8.30%	43.03%
ASIANPAINT	3014.00	15.90	0.53%	7.29	218.81	3568.00	15.53%	2700.10	11.63%	-4.99%	6.15%
AXISBANK	1087.10	24.15	2.27%	87.23	941.18	1151.85	5.62%	814.30	33.50%	-4.28%	25.01%
BAJA-AUTO	8290.00	-219.70	-2.58%	5.47	455.91	8650.00	4.16%	3625.60	128.65%	16.65%	113.78%
BAJAJFINSV	1605.95	-14.20	-0.88%	12.33	198.12	1741.00	7.76%	1215.00	32.18%	-1.54%	11.45%
BAJFINANCE	6771.00	58.20	0.87%	11.07	747.41	8192.00	17.35%	5485.70	23.43%	-9.56%	3.16%
BHARTIARTL	1146.15	3.95	0.35%	53.97	617.28	1200.65	4.54%	735.80	55.77%	-0.44%	44.18%
BPCL	663.60	11.05	1.69%	104.57	677.78	687.95	3.54%	314.05	111.30%	36.11%	97.35%
BRITANNIA	4930.00	4.75	0.10%	1.29	63.42	5386.05	8.47%	4153.00	18.71%	-4.38%	8.39%
CIPLA	1450.00	-20.35	-1.38%	15.50	225.34	1479.00	1.96%	852.00	70.19%	8.49%	40.45%
COALINDIA	447.80	-7.95	-1.74%	278.99	1247.15	487.60	8.16%	207.60	115.70%	25.24%	120.69%
DIVISLAB	3712.50	-10.95	-0.29%	3.29	121.69	4074.40	8.88%	2730.00	35.99%	0.96%	31.78%
DRREDDY	6379.00	-38.15	-0.59%	2.80	178.94	6465.00	1.33%	4297.00	48.45%	11.45%	40.06%
EICHERMOT	3830.05	-72.80	-1.87%	13.25	507.43	4200.00	8.81%	2836.00	35.05%	6.20%	19.59%
GRASIM	2198.00	29.40	1.36%	17.10	376.13	2222.00	1.08%	1527.05	43.94%	1.17%	28.16%
HCLTECH	1662.80	-12.45	-0.74%	22.40	371.26	1696.50	1.99%	1016.25	63.62%	6.35%	50.28%
HDFCBANK	1453.00	35.90	2.53%	280.67	4050.26	1757.50	17.33%	1363.55	6.56%	-3.45%	-14.25%
HDFCLIFE	589.40	4.20	0.72%	35.24	205.84	710.60	17.06%	457.80	28.75%	-3.81%	17.49%
HEROMOTOCO	4665.70	-186.90	-3.85%	11.54	541.23	4949.05	5.73%	2246.00	107.73%	11.24%	93.03%
HINDALCO	512.00	-0.30	-0.06%	51.87	265.20	620.50	17.49%	381.00	34.38%	-7.43%	20.07%
HINDUNILVR	2406.90	19.75	0.83%	10.33	246.71	2769.65	13.10%	2346.75	2.56%	-7.41%	-5.58%
ICICIBANK	1049.75	6.00	0.57%	112.94	1181.94	1059.40	0.91%	810.30	29.55%	2.41%	18.62%
INDUSINDBK	1507.00	23.40	1.58%	23.90	356.36	1694.50	11.07%	990.20	52.19%	-4.32%	34.00%
INFY	1685.40	-14.35	-0.84%	37.06	622.90	1733.00	2.75%	1185.30	42.19%	2.56%	7.44%
ITC	406.90	-2.35	-0.57%	140.84	572.68	499.70	18.57%	369.65	10.08%	-14.19%	5.53%
JSWSTEEL	822.00	1.80	0.22%	13.84	113.26	895.75	8.23%	649.05	26.65%	0.40%	12.57%
KOTAKBANK	1766.80	35.40	2.04%	76.11	1335.42	2064.40	14.42%	1643.50	7.50%	-1.65%	-1.36%
LT	3362.50	22.65	0.68%	15.78	528.28	3737.90	10.04%	2082.10	61.50%	-7.11%	52.12%
LTIM	5514.00	-0.05	#VALUE!	4.14	228.81	6442.00	14.41%	4132.20	33.44%	-1.27%	14.86%
M&M	1848.75	0.20	0.01%	18.31	337.75	1864.65	0.85%	1123.40	64.57%	10.87%	36.83%
MARUTI	11415.00	-68.35	-0.60%	3.55	405.33	11613.05	1.71%	8130.00	40.41%	13.38%	29.21%
NESTLEIND	2539.00	25.75	1.02%	6.31	159.54	2769.30	8.32%	1788.00	42.00%	-1.05%	-86.92%
NTPC	346.00	7.25	2.14%	193.41	664.29	346.50	0.14%	166.80	107.43%	9.50%	100.98%
ONGC	277.00	2.35	0.86%	189.69	525.81	281.15	1.48%	146.50	89.08%	13.49%	75.42%
POWERGRID	288.40	12.05	4.36%	430.54	1231.50	289.40	0.35%	159.30	81.04%	16.63%	28.41%
RELIANCE	2941.45	-6.55	-0.22%	35.59	1045.23	2969.45	0.94%	2180.00	34.93%	6.81%	19.71%
SBILIFE	1515.00	26.15	1.76%	15.69	235.86	1522.00	0.46%	1054.00	43.74%	4.71%	31.20%
SBIN	760.65	1.40	0.18%	125.28	951.31	774.60	1.80%	501.55	51.66%	20.22%	42.13%
SUNPHARMA	1541.00	10.90	0.71%	22.31	340.88	1555.10	0.91%	922.45	67.06%	13.05%	53.37%
TATACONSUM	1153.00	-2.00	-0.17%	10.56	121.49	1190.95	3.19%	686.60	67.93%	-1.23%	58.00%
TATAMOTORS	927.65	-4.95	-0.53%	47.34	438.59	950.00	2.35%	400.45	131.65%	13.97%	113.37%
TATASTEEL	141.15	-0.80	-0.56%	242.91	342.14	147.40	4.24%	101.55	39.00%	6.00%	26.77%
TCS	4035.00	-68.80	-1.68%	11.94	483.16	4184.75	3.58%	3070.25	31.42%	4.70%	17.91%
TECHM	1323.00	13.00	0.99%	21.13	277.33	1416.30	6.59%	981.05	34.86%	-6.28%	15.35%
TITAN	3688.45	-6.60	-0.18%	7.44	274.71	3886.95	5.11%	2321.00	58.92%	-4.07%	46.20%
ULTRACEMCO	9972.25	70.05	0.71%	3.21	318.84	10526.00	5.26%	6991.00	42.64%	-1.76%	35.88%
UPL	498.25	0.70	0.14%	30.34	151.70	769.75	35.27%	452.15	10.20%	-11.29%	-36.26%
WIPRO	531.95	-4.00	-0.75%	51.87	276.22	545.90	2.56%	352.00	51.12%	11.95%	33.65%

Note: 52 week high & 52 week low prices are adjusted for Bonus, Split & Rights Corporate actions.

Color code for Stocks closer to 52-week high :

	- within 0% and 2%
	- within 2% and 5%
	- within 5% and 7%

Color code for Stocks closer to 52-week low :

	- within 0% and 2%
	- within 2% and 5%
	- within 5% and 7%

365 days % Change and 30 days % Change value are adjusted With respect to corporate actions

Disclaimer / Disclosures:

ANALYST CERTIFICATION

I, Mrs. Vaishali Parekh B.com, Research Analyst, author and the name subscribed to this report, hereby certify that all of the views expressed in this research report accurately reflect our views about the subject issuer(s) or securities. We also certify that no part of our compensation was, is, or will be directly or indirectly related to the specific recommendation(s) or view(s) in this report.

Terms & conditions and other disclosures:

Prabhudas Lilladher Pvt. Ltd, Mumbai, India (hereinafter referred to as "PL") is engaged in the business of Stock Broking, Portfolio Manager, Depository Participant and distribution for third party financial products. PL is a subsidiary of Prabhudas Lilladher Advisory Services Pvt Ltd. which has its various subsidiaries engaged in business of commodity broking, investment banking, financial services (margin funding) and distribution of third party financial/other products, details in respect of which are available at www.plindia.com

This document has been prepared by the Research Division of PL and is meant for use by the recipient only as information and is not for circulation. This document is not to be reported or copied or made available to others without prior permission of PL. It should not be considered or taken as an offer to sell or a solicitation to buy or sell any security.

The information contained in this report has been obtained from sources that are considered to be reliable. However, PL has not independently verified the accuracy or completeness of the same. Neither PL nor any of its affiliates, its directors or its employees accepts any responsibility of whatsoever nature for the information, statements and opinion given, made available or expressed herein or for any omission therein.

Recipients of this report should be aware that past performance is not necessarily a guide to future performance and value of investments can go down as well. The suitability or otherwise of any investments will depend upon the recipient's particular circumstances and, in case of doubt, advice should be sought from an independent expert/advisor.

Either PL or its affiliates or its directors or its employees or its representatives or its clients or their relatives may have position(s), make market, act as principal or engage in transactions of securities of companies referred to in this report and they may have used the research material prior to publication.

PL may from time to time solicit or perform investment banking or other services for any company mentioned in this document.

PL is registered as Research Analyst under Securities and Exchange Board of India (Research Analysts) Regulations, 2014 PL submits that no material disciplinary action has been taken on us by any Regulatory Authority impacting Equity Research Analysis activities.

PL or its research analysts or its associates or his relatives do not have any financial interest in the subject company.

PL or its research analysts or its associates or his relatives do not have actual/beneficial ownership of one per cent or more securities of the subject company at the end of the month immediately preceding the date of publication of the research report.

PL or its research analysts or its associates or his relatives do not have any material conflict of interest at the time of publication of the research report.

PL or its associates might have received compensation from the subject company in the past twelve months.

PL or its associates might have managed or co-managed public offering of securities for the subject company in the past twelve months or mandated by the subject company for any other assignment in the past twelve months.

PL or its associates might have received any compensation for investment banking or merchant banking or brokerage services from the subject company in the past twelve months.

PL or its associates might have received any compensation for products or services other than investment banking or merchant banking or brokerage services from the subject company in the past twelve months PL or its associates might have received any compensation or other benefits from the subject company or third party in connection with the research report.

PL encourages independence in research report preparation and strives to minimize conflict in preparation of research report. PL or its analysts did not receive any compensation or other benefits from the subject Company or third party in connection with the preparation of the research report. PL or its Research Analysts do not have any material conflict of interest at the time of publication of this report.

It is confirmed that Mrs. Vaishali Parekh B.com, Research Analyst of this report has not received any compensation from the companies mentioned in the report in the preceding twelve months compensation of our Research Analysts is not based on any specific merchant banking, investment banking or brokerage service transactions.

The Research analysts for this report certifies that all of the views expressed in this report accurately reflect his or her personal views about the subject company or companies and its or their securities, and no part of his or her compensation was, is or will be, directly or indirectly related to specific recommendations or views expressed in this report.

The research analysts for this report has not served as an officer, director or employee of the subject company PL or its research analysts have not engaged in market making activity for the subject company

Our sales people, traders, and other professionals or affiliates may provide oral or written market commentary or trading strategies to our clients that reflect opinions that are contrary to the opinions expressed herein, and our proprietary trading and investing businesses may make investment decisions that are inconsistent with the recommendations expressed herein. In reviewing these materials, you should be aware that any or all of the foregoing, among other things, may give rise to real or potential conflicts of interest.

PL and its associates, their directors and employees may (a) from time to time, have a long or short position in, and buy or sell the securities of the subject company or (b) be engaged in any other transaction involving such securities and earn brokerage or other compensation or act as a market maker in the financial instruments of the subject company or act as an advisor or lender/borrower to the subject company or may have any other potential conflict of interests with respect to any recommendation and other related information and opinions.