

06th March, 2025

Most
Market
 **OUTLOOK**

Investment in securities market are subject to market risks, read all the related documents carefully before investing.

Technical Pick: (2-3 Days)

Stock Names	Close Price	SL	TP
NTPC : Buy	326	311	343

Fundamental Pick: (1 Year)

Shriram Finance : Buy

(CMP: 632, TP: 700)

Focused Ideas for the month

Stock Name	TP	Upside
M&M	3,675	35%
ICICI Bank	1,550	28%
Indian Hotels	960	27%
Bharti Airtel	1,985	23%
Shriram Finance	700	11%

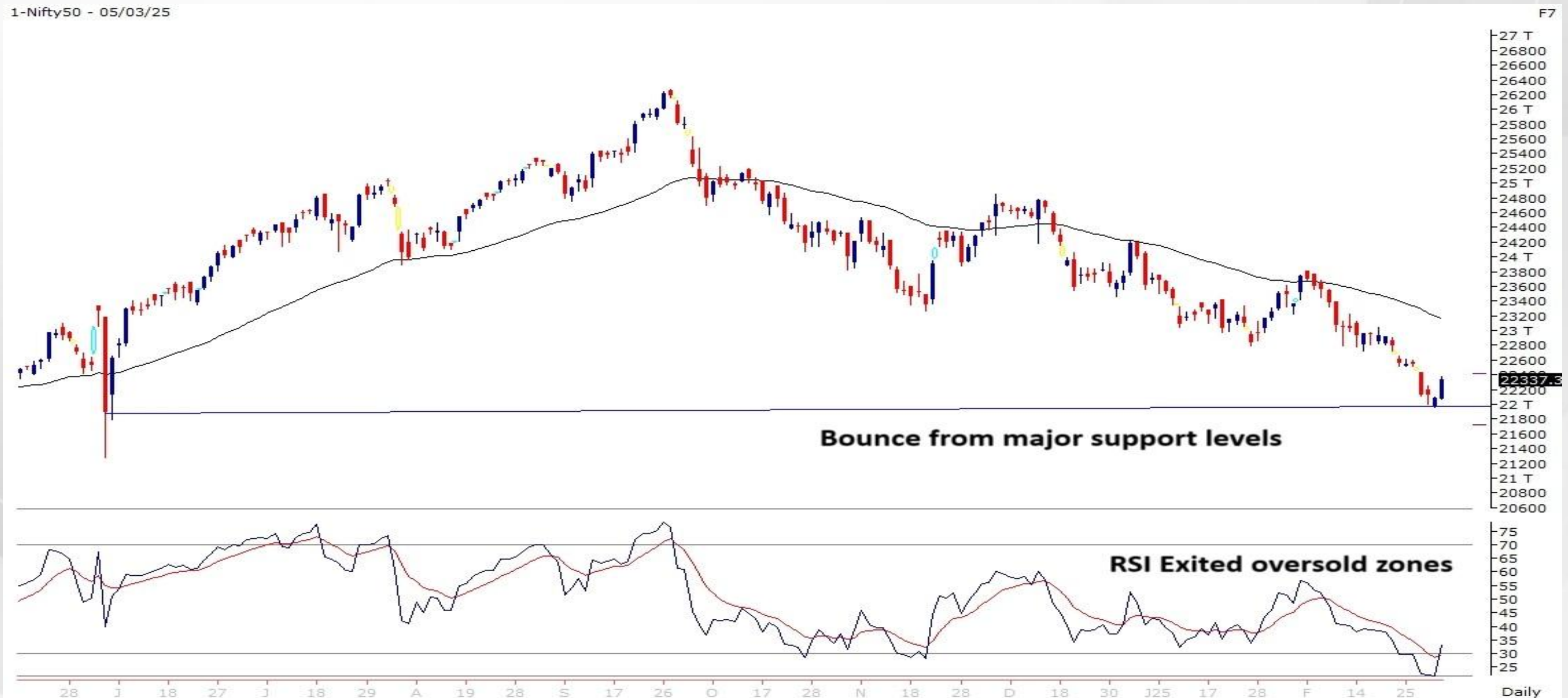
Quant Picks:

Quant Intraday Sell Idea:

Stock Names	Close Price	SL (1%)	TP (1%)
DABUR (Sell)	488.0	492.9	483.1
SUNPHARMA (Sell)	1582.0	1597.8	1566.2

- Market is expected to open on a positive note due to a rally in global markets, a decline in the US Dollar Index to a 4-month low at 104, and oil prices falling to a 3-year low below \$70.
- Additionally, the RBI has announced a fresh Rs 1 lakh crore open market operation (OMO) and a \$10 billion forex swap to inject liquidity into the banking system and manage the dollar, which will further boost market sentiment.
- On the global front, Asian markets gained up to 1%, driven by auto stocks, while the US market rose over 1% after the government granted a one-month tariff reprieve for auto imports from Mexico and Canada, signalling potential reductions in trade tensions.
- Banking, Auto, and Real estate stocks are expected to perform well following RBI's liquidity boost measures.
- Gift Nifty is flat to positive.

NIFTY (CMP : 22337) : Nifty immediate support is at 22100 then 22000 zones while resistance at 22500 then 22700 zones. Now it has to hold above 22200 zones for an up move towards 22500 then 22700 zones while supports have shifted higher to 22100 then 22000 zones.



Nifty Cash	R1	R2	S1	S2
22337	22500	22700	22100	22000

BANK NIFTY (CMP : 48490) : Bank Nifty support is at 48250 then 48000 zones while resistance at 48750 then 49000 zones. Now it has to hold above 48500 zones for a bounce towards 48750 then 49000 levels while a hold below the same could see some weakness towards 48250 then 48000 zones.



Bank Nifty Cash	R1	R2	S1	S2
48490	48750	49000	48250	48000

NTPC : Buy CMP : 326 SL : 311 Target : 343 Duration : 2-3 Days

- Stock has broken out of an inverted head and shoulder pattern on the daily chart with a large bodied bullish candlestick. It has closed above its 50 DEMA with rising volumes confirming the bullish momentum. The RSI Indicator is rising confirming the bullish momentum.

3-Ntpc Limited - 05/03/25

F7



- Nifty March future closed at 22,441.35 with a premium of 104.05 point v/s 108.40 point premium in the last session.
- Nifty Put/Call Ratio (OI) increased from 0.86 to 1.05 level.
- India VIX decreased by 1.16% to 13.67 level.
- On option front, Maximum Call OI is at 22500 then 22600 strike while Maximum Put OI is at 22000 then 21500 strike. Call writing is seen at 22500 then 22350 strike while Put writing is seen at 22200 then 22300 strike. Option data suggests a broader trading range in between 21800 to 22800 zones while an immediate range between 22100 to 22500 levels.
- Option Buying : Buy weekly Nifty 22300 Call if it holds above 22200 zones. Buy Bank Nifty 49500 Call if it holds above 48500 zones.
- Option Strategy : Nifty weekly Bull Call Spread (Buy 22350 CE and Sell 22500 CE) at net premium cost of 50-55 points. Bank Nifty Bull Call Spread (Buy 49000 CE and Sell 49500 CE) at net premium cost of 170-200 points.
- Option Writing : Sell weekly Nifty 22050 PE and 22550 CE with strict double SL. Sell Bank Nifty 45500 PE and 51200 CE with strict double SL.

Global Market Summary:

- US Markets closed higher in choppy trading on Wednesday, as investors cheered the likely easing of trade tensions between the U.S. and major trading partners. The White House announced a one-month exemption from the newly imposed 25% tariffs on vehicle imports from Mexico and Canada, offering temporary relief to U.S. automakers. Dow closed 1.1% higher, S&P 500 advanced by 1.1%, while the NASDAQ climbed 1.5%.
- Brent crude oil futures fell 2.2% to \$69.5 per barrel on Wednesday, nearing a six-month low.
- European markets gained 1.5-2.0%. Dow Futures is trading Flat. Asian markets are trading 1.0-2.0% higher.
- **Global Cues: Positive**

Indian Market Summary:

- A key driving factor was indication from the US Commerce Secretary that the Trump administration could look at mid pathway for reducing tariffs on Mexican and Canadian goods.
- Nifty50 ended with 1.2% gains at 22,337 level. The broader market witnessed strong buying interest for the second consecutive day with Nifty Midcap 100 and Smallcap 100 indices rising 2.4% and 3% respectively.
- FIIs: -Rs2,895 crore DIIs: +Rs3,371 crore. GIFT Nifty is trading up 43 points (+0.2%).
- **Domestic Cues: Positive**

News and Impact :

- **Zydus Lifesciences:** The firm received the final approval from the US FDA to manufacture Dasatinib Tablets. Dasatinib is used for the treatment of Philadelphia chromosome-positive (Ph+) chronic myeloid leukaemia (CML) in the chronic phase. Dasatinib tablets had annual sales of \$1,807.7 million in the United States (as per IQVIA MAT January 2025). **Impact: Positive**
- **Zaggle Prepaid Ocean Services:** The company has entered into an agreement with Tech Mahindra. Tech Mahindra will utilize Zaggle's spend management dashboard, Zatix, for improved visibility on their corporate and purchase card spends, issued in partnership with SBI Cards. **Impact: Positive**

Castrol : CMP Rs 222, TP 260, 17% Upside, Buy

- Saudi Aramco is considering bidding for BP's Castrol lubricant assets, which could be worth around \$10 billion. Aramco is particularly interested in Castrol's operations in fast-growing markets like India.
- Brent oil price below \$70 per barrel is also positive for Castrol
- Castrol's 4QCY24 EBITDA was a beat on our estimate, as the EBITDA margin came in at 27.8% (our est: 21.7%). Its focus on brand building and expanding distribution is expected to drive volume growth and market share.
- CSTRM maintained its guidance of growing higher than the industry's average growth rate of 4-5% while aiming for a 22-25% EBITDA margin for CY25. We estimate ~23% EBITDA margin in both CY25 & CY26.
- CSTRM has always enjoyed a strong brand legacy, and we are confident in its ability to maintain profitability through an improved product mix, stringent cost-control measures, and the launch of advanced products that command better realization. **View: Buy**

Shriram Finance : CMP Rs 632, TP 700, 11% Upside, Buy

- RBI on Wednesday announced more measures to Boost Liquidity With Fresh Rs 1 Lakh Crore OMO, \$10 Billion Forex Swap. This will be positive for Financial system.
- Shriram Finance (SHFL) is well-positioned to capitalize on the recovery in vehicle finance, particularly as demand for commercial and passenger vehicles gains momentum.
- With a diversified lending portfolio, the company is set to benefit from lower borrowing costs, which will enhance net interest margins and profitability.
- Its strong focus on asset quality & collection efficiency suggests that it is well-prepared to navigate the evolving credit environment.
- We expect 18%/19% AUM/PAT CAGR over FY24-27 and expected RoA/RoE of 3.2%/16% in FY26. **View: Buy**

What is this?

Based on technical indicators this strategy gives 2 stocks that have a high likelihood to fall during the day (from open to close). This is an intraday Sell strategy which can provide a good cushioning during a black swan event.

Today's **Sell** Ideas:

Stock Names	Close Price	SL (1%)	TP (1%)
DABUR (Sell)	488.0	492.9	483.1
SUNPHARMA (Sell)	1582.0	1597.8	1566.2

What are the rules?

- Stock names will be given at market open (9:15 am)
- Recommended time to entry: between 9:15 to 9:30 am.
- Entry: We short 2 stocks daily (intraday)
- Exit: we will exit at 3:15 as this is an intraday call
- SL: is placed at 1% of the open.
- Book profit: At 1% fall since open.
- In special situations the book profit might be delayed if the stock is in free fall.

Disclosures:

The following Disclosures are being made in compliance with the SEBI Research Analyst Regulations 2014 (herein after referred to as the Regulations).

Motilal Oswal Financial Services Ltd. (MOFSL) is a SEBI Registered Research Analyst having registration no. INH000000412. MOFSL, the Research Entity (RE) as defined in the Regulations, is engaged in the business of providing Stock broking services, Depository participant services & distribution of various financial products. MOFSL is a listed public company, the details in respect of which are available on www.motilaloswal.com. MOFSL is registered with the Securities & Exchange Board of India (SEBI) and is a registered Trading Member with National Stock Exchange of India Ltd. (NSE) and Bombay Stock Exchange Limited (BSE), Multi Commodity Exchange of India Limited (MCX) and National Commodity & Derivatives Exchange Limited (NCDEX) for its stock broking activities & is Depository participant with Central Depository Services Limited (CDSL) National Securities Depository Limited (NSDL),NERL, COMRIS and CCRL and is member of Association of Mutual Funds of India (AMFI) for distribution of financial products and Insurance Regulatory & Development Authority of India (IRDA) as Corporate Agent for insurance products. Details of associate entities of Motilal Oswal Financial Services Ltd. are available on the website at <http://onlinereports.motilaloswal.com/Dormant/documents/Associate%20Details.pdf>

Details of pending Enquiry Proceedings of Motilal Oswal Financial Services Limited are available on the website at <https://galaxy.motilaloswal.com/ResearchAnalyst/PublishViewLitigation.aspx>

MOFSL, it's associates, Research Analyst or their relatives may have any financial interest in the subject company. MOFSL and/or its associates and/or Research Analyst or their relatives may have actual beneficial ownership of 1% or more securities in the subject company at the end of the month immediately preceding the date of publication of the Research Report or date of the public appearance. MOFSL and its associate company(ies), their directors and Research Analyst and their relatives may have any other potential conflict of interests at the time of publication of the research report or at the time of public appearance, however the same shall have no bearing whatsoever on the specific recommendations made by the analyst(s), as the recommendations made by the analyst(s) are completely independent of the views of the associates of MOFSL even though there might exist an inherent conflict of interest in some of the stocks mentioned in the research report..

In the past 12 months, MOFSL or any of its associates may have:

- a)received any compensation/other benefits from the subject company of this report
- b)managed or co-managed public offering of securities from subject company of this research report,
- c)received compensation for investment banking or merchant banking or brokerage services from subject company of this research report,
- d)received compensation for products or services other than investment banking or merchant banking or brokerage services from the subject company of this research report.

- MOFSL and it's associates have not received any compensation or other benefits from the subject company or third party in connection with the research report.
- Subject Company may have been a client of MOFSL or its associates during twelve months preceding the date of distribution of the research report.
- Research Analyst may have served as director/officer/employee in the subject company.
- MOFSL and research analyst may engage in market making activity for the subject company.

MOFSL and its associate company(ies), and Research Analyst and their relatives from time to time may have:

a) a long or short position in, act as principal in, and buy or sell the securities or derivatives thereof of companies mentioned herein.

(b) be engaged in any other transaction involving such securities and earn brokerage or other compensation or act as a market maker in the financial instruments of the company(ies) discussed herein or act as an advisor or lender/borrower to such company(ies) or may have any other potential conflict of interests with respect to any recommendation and other related information and opinions.; however the same shall have no bearing whatsoever on the specific recommendations made by the analyst(s), as the recommendations made by the analyst(s) are completely independent of the views of the associates of MOFSL even though there might exist an inherent conflict of interest in some of the stocks mentioned in the research report.

Above disclosures include beneficial holdings lying in demat account of MOFSL which are opened for proprietary investments only. While calculating beneficial holdings, It does not consider demat accounts which are opened in name of MOFSL for other purposes (i.e holding client securities, collaterals, error trades etc.). MOFSL also earns DP income from clients which are not considered in above disclosures.

To enhance transparency, MOFSL has incorporated a Disclosure of Interest Statement in this document. This should, however, not be treated as endorsement of the views expressed in the report. MOFSL and / or its affiliates do and seek to do business including investment banking with companies covered in its research reports. As a result, the recipients of this report should be aware that MOFSL may have a potential conflict of interest that may affect the objectivity of this report.

Terms & Conditions:

This report has been prepared by MOFSL and is meant for sole use by the recipient and not for circulation. The report and information contained herein is strictly confidential and may not be altered in any way, transmitted to, copied or distributed, in part or in whole, to any other person or to the media or reproduced in any form, without prior written consent of MOFSL. The report is based on the facts, figures and information that are considered true, correct, reliable and accurate. The intent of this report is not recommendatory in nature. The information is obtained from publicly available media or other sources believed to be reliable. Such information has not been independently verified and no guaranty, representation of warranty, express or implied, is made as to its accuracy, completeness or correctness. All such information and opinions are subject to change without notice. The report is prepared solely for informational purpose and does not constitute an offer document or solicitation of offer to buy or sell or subscribe for securities or other financial instruments for the clients. Though disseminated to all the customers simultaneously, not all customers may receive this report at the same time. MOFSL will not treat recipients as customers by virtue of their receiving this report.

Analyst Certification

The views expressed in this research report accurately reflect the personal views of the analyst(s) about the subject securities or issues, and no part of the compensation of the research analyst(s) was, is, or will be directly or indirectly related to the specific recommendations and views expressed by research analyst(s) in this report.

Disclosure of Interest Statement

Analyst ownership of the stock No

A graph of daily closing prices of securities is available at www.nseindia.com, www.bseindia.com. Research Analyst views on Subject Company may vary based on Fundamental research and Technical Research. Proprietary trading desk of MOFSL or its associates maintains arm's length distance with Research Team as all the activities are segregated from MOFSL research activity and therefore it can have an independent view with regards to subject company for which Research Team have expressed their views.

Regional Disclosures (outside India)

This report is not directed or intended for distribution to or use by any person or entity resident in a state, country or any jurisdiction, where such distribution, publication, availability or use would be contrary to law, regulation or which would subject MOFSL & its group companies to registration or licensing requirements within such jurisdictions.

For Hong Kong:

This report is distributed in Hong Kong by Motilal Oswal capital Markets (Hong Kong) Private Limited, a licensed corporation (CE AYY-301) licensed and regulated by the Hong Kong Securities and Futures Commission (SFC) pursuant to the Securities and Futures Ordinance (Chapter 571 of the Laws of Hong Kong) "SFO". As per SEBI (Research Analyst Regulations) 2014 Motilal Oswal Financial Services Limited (SEBI Reg No. INH000000412) has an agreement with Motilal Oswal capital Markets (Hong Kong) Private Limited for distribution of research report in Hong Kong. This report is intended for distribution only to "Professional Investors" as defined in Part I of Schedule 1 to SFO. Any investment or investment activity to which this document relates is only available to professional investor and will be engaged only with professional investors." Nothing here is an offer or solicitation of these securities, products and services in any jurisdiction where their offer or sale is not qualified or exempt from registration. The Indian Analyst(s) who compile this report is/are not located in Hong Kong & are not conducting Research Analysis in Hong Kong.

Siddhartha Khemka
Head - Retail Research

Chandan Taparia, CMT, CFTe
Head - Derivatives & Technical Research

Neil Jha ,
Head - Quant Products

For U.S.

MOTILAL Oswal Financial Services Limited (MOFSL) is not a registered broker - dealer under the U.S. Securities Exchange Act of 1934, as amended (the "1934 act") and under applicable state laws in the United States. In addition MOFSL is not a registered investment adviser under the U.S. Investment Advisers Act of 1940, as amended (the "Advisers Act" and together with the 1934 Act, the "Acts"), and under applicable state laws in the United States. Accordingly, in the absence of specific exemption under the Acts, any brokerage and investment services provided by MOFSL, including the products and services described herein are not available to or intended for U.S. persons. This report is intended for distribution only to "Major Institutional Investors" as defined by Rule 15a-6(b)(4) of the Exchange Act and interpretations thereof by SEC (henceforth referred to as "major institutional investors"). This document must not be acted on or relied on by persons who are not major institutional investors. Any investment or investment activity to which this document relates is only available to major institutional investors and will be engaged in only with major institutional investors. In reliance on the exemption from registration provided by Rule 15a-6 of the U.S. Securities Exchange Act of 1934, as amended (the "Exchange Act") and interpretations thereof by the U.S. Securities and Exchange Commission ("SEC") in order to conduct business with Institutional Investors based in the U.S., MOFSL has entered into a chaperoning agreement with a U.S. registered broker-dealer, Motilal Oswal Securities International Private Limited. ("MOSIPL"). Any business interaction pursuant to this report will have to be executed within the provisions of this chaperoning agreement.

The Research Analysts contributing to the report may not be registered /qualified as research analyst with FINRA. Such research analyst may not be associated persons of the U.S. registered broker-dealer, MOSIPL, and therefore, may not be subject to NASD rule 2711 and NYSE Rule 472 restrictions on communication with a subject company, public appearances and trading securities held by a research analyst account.

For Singapore

In Singapore, this report is being distributed by Motilal Oswal Capital Markets Singapore Pte Ltd ("MOCMSPL") (Co.Reg. NO. 201129401Z) which is a holder of a capital markets services license and an exempt financial adviser in Singapore, as per the approved agreement under Paragraph 9 of Third Schedule of Securities and Futures Act (CAP 289) and Paragraph 11 of First Schedule of Financial Advisors Act (CAP 110) provided to MOCMSPL by Monetary Authority of Singapore. Persons in Singapore should contact MOCMSPL in respect of any matter arising from, or in connection with this report/publication/communication. This report is distributed solely to persons who qualify as "Institutional Investors", of which some of whom may consist of "accredited" institutional investors as defined in section 4A(1) of the Securities and Futures Act, Chapter 289 of Singapore ("the SFA"). Accordingly, if a Singapore person is not or ceases to be such an institutional investor, such Singapore Person must immediately discontinue any use of this Report and inform MOCMSPL.

Disclaimer:

This report is intended for distribution to Retail Investors.

The report and information contained herein is strictly confidential and meant solely for the selected recipient and may not be altered in any way, transmitted to, copied or distributed, in part or in whole, to any other person or to the media or reproduced in any form, without prior written consent. This report and information herein is solely for informational purpose and may not be used or considered as an offer document or solicitation of offer to buy or sell or subscribe for securities or other financial instruments. Nothing in this report constitutes investment, legal, accounting and tax advice or a representation that any investment or strategy is suitable or appropriate to your specific circumstances. The securities discussed and opinions expressed in this report may not be suitable for all investors, who must make their own investment decisions, based on their own investment objectives, financial positions and needs of specific recipient. This may not be taken in substitution for the exercise of independent judgment by any recipient. Each recipient of this document should make such investigations as it deems necessary to arrive at an independent evaluation of an investment in the securities of companies referred to in this document (including the merits and risks involved), and should consult its own advisors to determine the merits and risks of such an investment. The investment discussed or views expressed may not be suitable for all investors. Certain transactions -including those involving futures, options, another derivative products as well as non-investment grade securities - involve substantial risk and are not suitable for all investors. No representation or warranty, express or implied, is made as to the accuracy, completeness or fairness of the information and opinions contained in this document. The Disclosures of Interest Statement incorporated in this document is provided solely to enhance the transparency and should not be treated as endorsement of the views expressed in the report. This information is subject to change without any prior notice. The Company reserves the right to make modifications and alternations to this statement as may be required from time to time without any prior approval. MOFSL, its associates, their directors and the employees may from time to time, effect or have effected an own account transaction in, or deal as principal or agent in or for the securities mentioned in this document. They may perform or seek to perform investment banking or other services for, or solicit investment banking or other business from, any company referred to in this report. Each of these entities functions as a separate, distinct and independent of each other. The recipient should take this into account before interpreting the document. This report has been prepared on the basis of information that is already available in publicly accessible media or developed through analysis of MOFSL. The views expressed are those of the analyst, and the Company may or may not subscribe to all the views expressed therein. This document is being supplied to you solely for your information and may not be reproduced, redistributed or passed on, directly or indirectly, to any other person or published, copied, in whole or in part, for any purpose. This report is not directed or intended for distribution to, or use by, any person or entity who is a citizen or resident of or located in any locality, state, country or other jurisdiction, where such distribution, publication, availability or use would be contrary to law, regulation or which would subject MOFSL to any registration or licensing requirement within such jurisdiction. The securities described herein may or may not be eligible for sale in all jurisdictions or to certain category of investors. Persons in whose possession this document may come are required to inform themselves of and to observe such restriction. Neither the Firm, not its directors, employees, agents or representatives shall be liable for any damages whether direct or indirect, incidental, special or consequential including lost revenue or lost profits that may arise from or in connection with the use of the information. The person accessing this information specifically agrees to exempt MOFSL or any of its affiliates or employees from, any and all responsibility/liability arising from such misuse and agrees not to hold MOFSL or any of its affiliates or employees responsible for any such misuse and further agrees to hold MOFSL or any of its affiliates or employees free and harmless from all losses, costs, damages, expenses that may be suffered by the person accessing this information due to any errors and delays.

This report is meant for the clients of Motilal Oswal only.

Investment in securities market are subject to market risks. Read all the related documents carefully before investing.

Registration granted by SEBI and certification from NISM in no way guarantee performance of the intermediary or provide any assurance of returns to investors.

Registered Office Address: Motilal Oswal Tower, Rahimtullah Sayani Road, Opposite Parel ST Depot, Prabhadevi, Mumbai-400025; Tel No.: 022 - 71934200 / 71934263; www.motilaloswal.com. Correspondence Address: Palm Spring Centre, 2nd Floor, Palm Court Complex, New Link Road, Malad (West), Mumbai- 400 064. Tel No: 022 71881000. Details of Compliance Officer: Neeraj Agarwal, Email Id: na@motilaloswal.com, Contact No.:022-40548085.

Grievance Redressal Cell:

Contact Person	Contact No.	Email ID
Ms. Hemangi Date	022 40548000 / 022 67490600	query@motilaloswal.com
Ms. Kumud Upadhyay	022 40548082	servicehead@motilaloswal.com
Mr. Ajay Menon	022 40548083	am@motilaloswal.com

Registration details of group entities.: Motilal Oswal Financial Services Ltd. (MOFSL): INZ000158836 (BSE/NSE/MCX/NCDEX); CDSL and NSDL: IN-DP-16-2015; Research Analyst: INH000000412 . AMFI: ARN .: 146822. IRDA Corporate Agent – CA0579. Motilal Oswal Financial Services Ltd. is a distributor of Mutual Funds, PMS, Fixed Deposit, Insurance, Bond, NCDs and IPO products.

Customer having any query/feedback/ clarification may write to query@motilaloswal.com. In case of grievances for any of the services rendered by Motilal Oswal Financial Services Limited (MOFSL) write to grievances@motilaloswal.com, for DP to dp@motilaloswal.com.