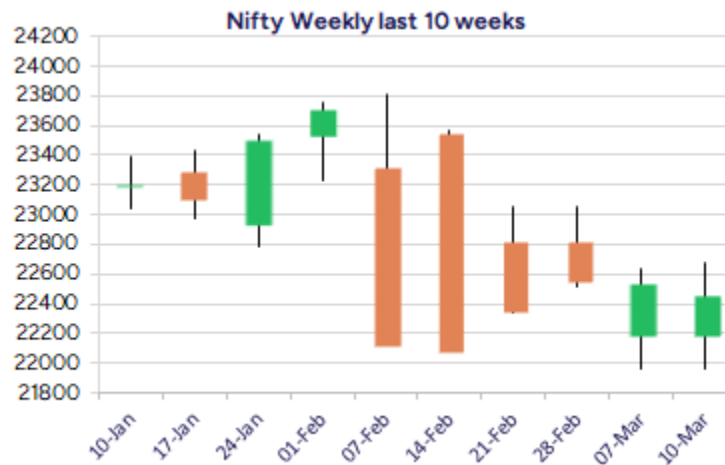
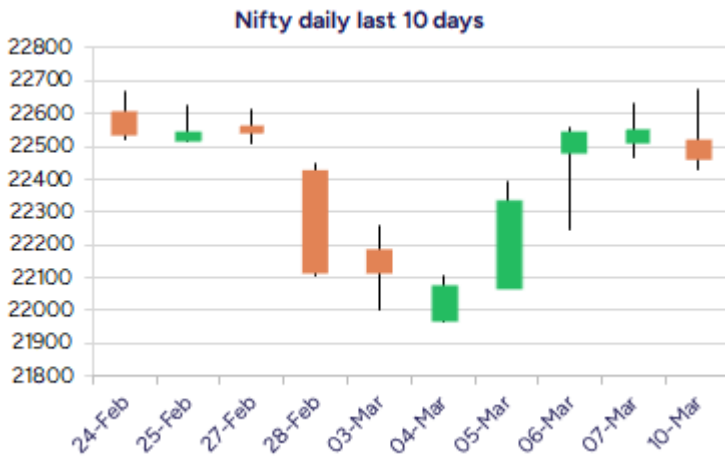


\* Sensex 74115.17 -217.41

\* Nifty 22460.30 -92.20

\* Bank Nifty 48216.80 -280.70



\*Blue candle → Close rate > Open rate \* Red candle → Close rate < Open rate

## Market Preview

### Nifty breaches below 22500 zone

Nifty amid fluctuations, once again slipped below the 22500 zone with profit booking witnessed weakening the bias and sentiment. BankNifty with weak bias lost almost 300 points to end near the 48200 zone and is precariously placed with 47800 level as the important support zone. The market breadth turned weak with the advance decline indicating a ratio of 1:3 at close.

## Market Forecast

### Nifty daily range 22300-22700

Nifty after witnessing a positive start, was subjected to profit booking after finding resistance near the 22650 zone and slipped down to end in the red near 22450 level with bias and sentiment weakening, the index is once again precariously placed with 22000 zone as the important and crucial support on the downside. A move past 22700 is necessary to improve the bias and only a decisive breach above 23000 level shall establish conviction for further rise ahead.

BankNifty once again slipped down with profit booking seen forming a lower top pattern on the daily chart and further ahead, has the important and crucial support zone of 47800 levels which needs to be sustained, failing which, can trigger for fresh intensified selling pressure with 46000 as the next support level. On the upside, as mentioned earlier, would need a decisive breach above the 50EMA zone of 49500 levels to improve the bias and thereafter expect for further rise in the coming days.

The support for the day is seen at 22300 levels while the resistance is seen at 22700 levels. BankNifty would have the daily range of 47800-48700 levels.

Indices	Period	Closing	% Chng	Trend	Reversal	2 Sup	1 Sup	Pivot	1 Res	2 Res
Nifty	Daily	22460.30	-0.41%	4	22103.50	22274	22367	22522	22615	22770
	Weekly	22552.50	1.93%	-4	22652.75	21714	22133	22384	22803	23053
	Monthly	23508.40	-0.58%	-5	26264.60	22068	22788	23507	24228	24947
Bank Nifty	Daily	48216.80	-0.58%	-1	48253.85	47839	48028	48314	48502	48788
	Weekly	48497.50	0.32%	-4	48749.05	47395	47946	48393	48944	49390
	Monthly	49587.20	-2.50%	-5	52793.25	45873	47730	49701	51559	53530
Sensex	Daily	74115.17	-0.29%	4	73072.45	73574	73845	74293	74564	75012
	Weekly	74332.58	1.55%	-4	74891.60	71898	73115	73851	75068	75804
	Monthly	77500.57	-0.82%	-5	85764.50	72808	75154	77614	79960	82419

## Daily Trend turned Down

Scrip Name	LCP	Curr Trnd	Reversal
ARVIND	327.85	11	336.25
BANKINDIA	94.39	2	96.15
CASTROLIND	234.81	3	235.25
CENTURYTEX	1909.3	4	1914.65
CHOLAFIN	1419.55	4	1443.85
EXIDEIND	346.9	2	348.7
GLAXO	2660.8	2	2661.25
GODREJPROP	1974.15	4	1976.6
GREAVESCOT	221.57	1	234.2
ICIL	264.5	2	266.45
INDIGO	4627.55	3	4638.4
JMFINANCIL	90.42	2	91.85

\* Trends turned Down after a significant period

## Daily Trend turned Down

Scrip Name	LCP	Curr Trnd	Reversal
JUSTDIAL	841.5	2	829.2
JUBLPHARMA	882.8	1	897.5
LARSENTOUBRO	3177.7	3	3191.15
M&MFIN	272.15	2	272.55
ONGC	223.19	2	225.25
ORACLEFIN	7388.3	2	7380.05
SAIL	107.27	3	108.45
TITAN	3026.8	2	3062.1
TRENT	4799.7	4	4871.2
TVSMOTOR	2257.25	2	2289.8
UNIONBANK	114.18	2	114.15
WIPRO	280.9	2	279.6

\* Trends turned Down after a significant period

## Gainers - Losers ( Nifty 500 Stocks )

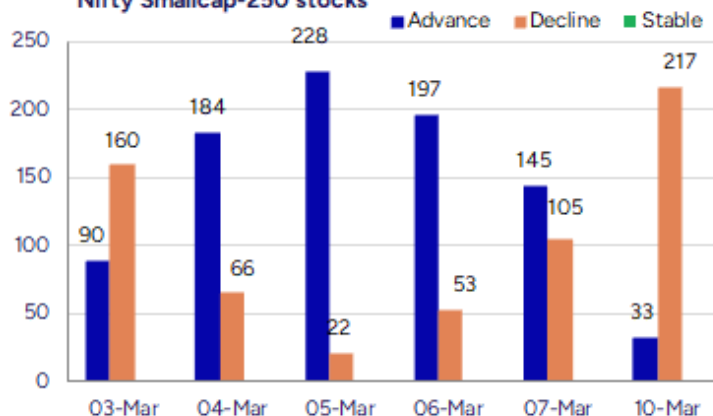
## Gainers

Scrip Name	LCP	% Change	Volume
Divine Power	121.85	19.46	114000
Welspun Invest	832.75	18.22	38019
Banka Biolo	95.51	17.45	406246
Bodal Chemicals	65.88	15.95	7055094
Lloyds Luxuries	96.65	14.38	84000
Sahaj Fashions	11.3	14.14	12000
ICE Make Refrig	819.65	11.73	289110

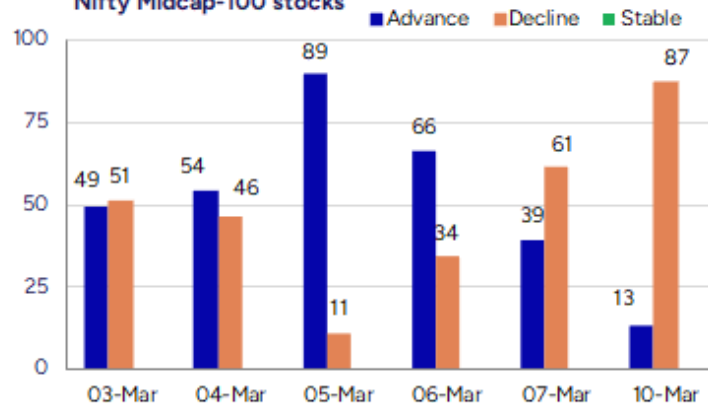
## Losers

Scrip Name	LCP	% Change	Volume
Neelam Linens	27.8	-16.52	180000
Italian Edibles	31.15	-14.19	6000
Hindustan Media	74.89	-11.45	184343
Sati Poly Plast	111.5	-10.8	3000
Industrial Inv	256.05	-9.97	4108
Neogen	1623.65	-9.97	142615
Capital Trust	94.09	-9.66	86106

## Nifty Smallcap-250 stocks



## Nifty Midcap-100 stocks



### Nifty Daily chart with RSI indicator



### BankNifty Daily chart with RSI indicator

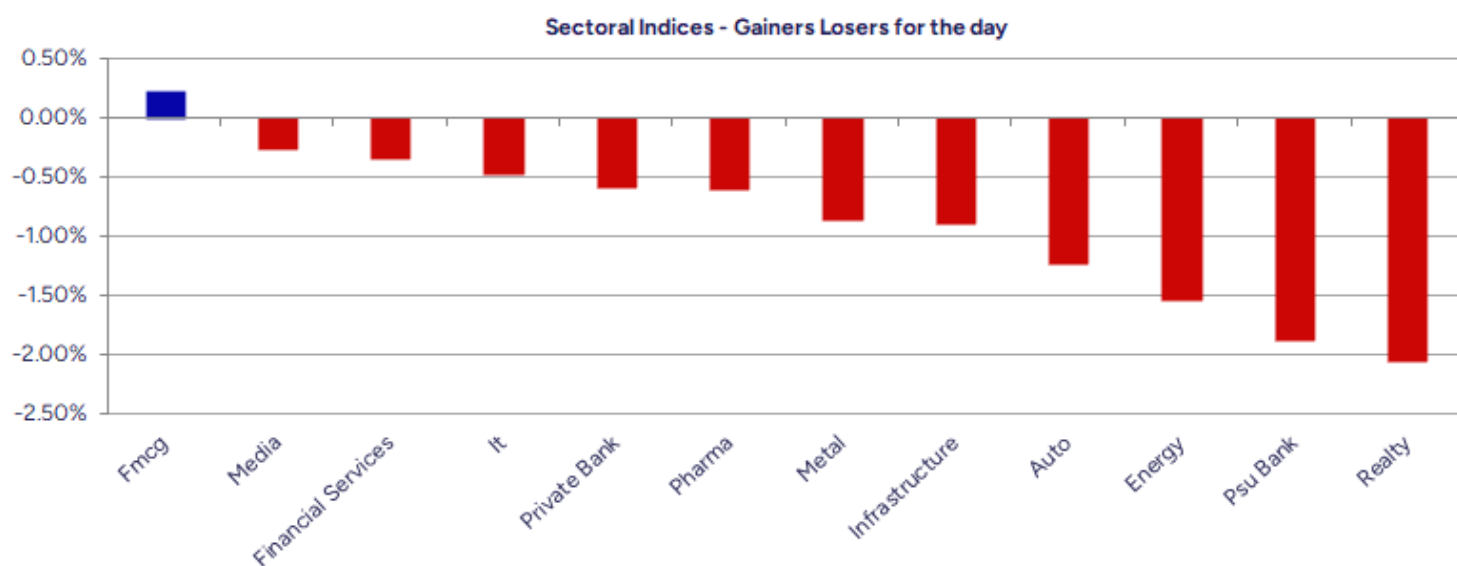


Breakouts - Cross above 200 DMA			
Company Name	LCP	Change %	200 DMA
ICE Make Refrig	819.65	7.82	760.2
Tirupati Forge	39.23	2.21	38.38
AAVAS Financier	1752.35	2.00	1718.02
TECHLABS	933.65	1.86	916.62
Gujarat Fluoro	3817.45	1.61	3756.89
Innova Captab	783.3	0.58	778.76
Aster DM Health	422.75	0.51	420.59
Mangalore Chem	140.45	0.16	140.22
LIQUIDSBI	1000.01	0.00	1000

Breakdown - Cross below 200 DMA			
Company Name	LCP	Change %	200 DMA
Transformers	394.05	-5.86	418.56
Bharat Rasayan	10478.55	-5.58	11097.5
Neuland Lab	11401.85	-4.75	11969.86
Ganesh Housing	1004.8	-4.41	1051.11
Datamatics Glob	584.55	-4.29	610.74
South Ind Bk	24.43	-3.93	25.43
Heads UP Vent	11.81	-3.59	12.25
Paradeep Phosph	91.64	-3.06	94.53
Authum Invest	1468.7	-2.64	1508.49
Time Techno	377	-2.59	387.02
Epigral	1775	-2.41	1818.78
Sah Polymers	86.2	-2.30	88.23
RPG Life	2073.35	-2.28	2121.74
Mah Seamless	638.95	-2.17	653.11
SPIC	78.49	-2.17	80.23
One 97 Comm	665.25	-2.12	679.68
EPack Durables	353.55	-1.99	360.74
Unihealth Hospi	138.2	-1.83	140.78

\* Stocks crossing above its Simple Moving Average (200DMA)

\* Stocks crossing below its Simple Moving Average (200DMA)



Stocks witnessing a volume surge as compared to their 5 day average volume

Watch out for the stocks that have seen a huge spurt in its share price over the last three days

Volume Shockers - NSE					
Company name	LCP	% Chg	Volume	Avg Vol *	% Chg
Data Patterns	1616.85	-0.7	7288028	106334	6754
BEW Engineering	151.1	0.57	71500	1125	6256
Oneclick Logi.	167.3	4.99	195600	4320	4428
Precision	30	-0.99	826000	22000	3655
Somi Conveyor	179.53	-2.59	199959	5503	3533
Sotac Pharma	93	0.7	253200	7440	3303
DIC India	694	4.19	40967	1351	2933
DC Infotech	258.85	-4.41	155599	6024	2483
Diamond Power	92.88	-0.81	148603	6800	2085
AAVAS Financier	1726.3	1.59	6213122	322120	1829
Kamat Hotels	311.5	0.08	840299	48751	1624
Shakti Pumps	906	-1.34	630329	38631	1532
Banka Biolo	95.6	17.56	381114	24069	1483
Ushanti Colour	64.4	8.24	40000	2800	1329
Jindal Drilling	866.75	-3.44	496295	34855	1324
ICE Make Refrig	822.3	12.09	279843	19855	1309
Adani Green Ene	826	-1.34	6434293	480592	1239
Praxis Home Ret	13.8	-1.22	826585	62438	1224
Jindal Worldwid	64.34	2.96	1793066	138074	1199
Kaya	225	-5.16	78241	6240	1154

\* the Average Volume of last 5 days

Price Shockers - NSE				
Company name	LCP	3 days *	% Chg	Volume
Banka Biolo	95.51	67.22	42.09	406804
Somi Conveyor	180.84	132.07	36.93	203047
Lancor Holdings	28.6	22.41	27.62	1035679
Balaxi Pharma	72.45	57.25	26.55	199861
Capital Trust	94.09	75.78	24.16	86136
Compucom Soft	21.58	17.59	22.68	162555
Welspun Invest	832.75	679.55	22.54	38019
Divine Power	121.85	100	21.85	114000
Nitiraj Enginee	366.2	302.4	21.1	210867
Bharat Wire Rop	181.08	151.9	19.21	495476
Bodal Chemicals	65.88	55.68	18.32	7055095
Jyoti CNC Auto	983.75	833.3	18.05	2558178
Stallion India	76.99	65.46	17.61	2228670
Suraj	432.8	369.95	16.99	81530
Genus Paper	19.51	16.74	16.55	905775
Sumit Woods	93.6	80.87	15.74	13123
MIC Electronics	64.2	55.47	15.74	203762
Peninsula Land	28.02	24.21	15.74	137342
Swan Defence	78.2	67.57	15.73	984
Kothari Product	73.43	63.45	15.73	6358

\* the % price rise of the last 3 days



Nifty 50 stocks - Summary Details											
Symbol	LTP	Chng	% Chng	Volume (lacs)	Turnover (crs.)	52w High	Diff with 52w H	52w Low	Diff with 52w L	365 days % chng	30 days % chng
NIFTY 50	22460.30	-92.20	-0.41%	2938.55	22330.70	26277.35	14.53%	21281.45	5.54%	-4.28%	0.26%
ADANIANT	2224.40	-23.10	-1.03%	9.40	212.29	3743.90	40.59%	2025.00	9.85%	-3.90%	-30.34%
ADANIPTS	1137.50	-7.00	-0.61%	24.31	280.78	1621.40	29.84%	995.65	14.25%	-0.14%	-13.65%
APOLLOHOSP	6150.00	-66.10	-1.06%	2.66	164.09	7545.35	18.49%	5693.20	8.02%	-8.46%	2.77%
ASIANPAINT	2273.60	3.60	0.16%	10.72	244.65	3394.90	33.03%	2124.75	7.01%	-0.04%	-20.92%
AXISBANK	1035.30	-2.35	-0.23%	59.96	624.57	1339.65	22.72%	933.50	10.91%	1.32%	-6.64%
BAJAJ-AUTO	7377.00	-197.75	-2.61%	4.95	368.78	12774.00	42.25%	7301.00	1.04%	-15.74%	-14.69%
BAJAJFINSV	1837.55	-7.75	-0.42%	17.03	316.87	2029.90	9.48%	1419.05	29.49%	2.61%	16.58%
BAJFINANCE	8330.00	-74.50	-0.89%	10.16	861.43	8739.00	4.68%	6297.80	32.27%	-0.82%	30.89%
BEL	272.29	-4.70	-1.70%	209.87	583.54	340.50	20.03%	179.10	52.03%	-0.02%	28.71%
BHARTIARTL	1628.00	-2.70	-0.17%	37.78	619.50	1779.00	8.49%	1151.70	41.36%	-2.75%	35.93%
BPCL	256.69	-4.57	-1.75%	84.88	221.43	376.00	31.73%	234.01	9.69%	-1.15%	-58.18%
BRITANNIA	4725.00	-23.25	-0.49%	2.90	138.24	6469.90	26.97%	4506.00	4.86%	-2.51%	-2.88%
CIPLA	1460.60	2.15	0.15%	9.06	133.17	1702.05	14.19%	1317.25	10.88%	-0.94%	-1.67%
COALINDIA	374.65	-6.00	-1.58%	55.41	210.28	543.55	31.07%	349.25	7.27%	0.63%	-17.00%
DRREDDY	1120.00	-13.25	-1.17%	9.51	107.12	1421.49	21.21%	1103.90	1.46%	-8.64%	-82.08%
EICHERMOT	4972.50	-128.20	-2.51%	3.17	159.46	5575.50	10.82%	3672.00	35.42%	-5.06%	34.75%
GRASIM	2386.20	-21.05	-0.87%	6.51	156.36	2877.75	17.08%	2128.60	12.10%	-3.23%	8.04%
HCLTECH	1549.80	-8.15	-0.52%	18.56	289.19	2012.20	22.98%	1235.00	25.49%	-9.72%	-4.87%
HDFCBANK	1688.70	-0.55	-0.03%	78.02	1318.28	1880.00	10.18%	1421.25	18.82%	-2.51%	16.81%
HDFCLIFE	623.20	-2.00	-0.32%	23.16	145.66	761.20	18.13%	511.40	21.86%	-1.65%	0.52%
HEROMOTOCO	3588.00	-64.50	-1.77%	6.76	243.93	6246.25	42.56%	3495.00	2.66%	-14.55%	-21.50%
HINDALCO	690.05	-1.30	-0.19%	107.07	747.11	772.65	10.69%	501.20	37.68%	13.82%	28.81%
HINDUNILVR	2246.50	41.95	1.90%	12.42	279.48	3035.00	25.98%	2136.00	5.17%	-6.74%	-8.89%
ICICIBANK	1212.90	-1.65	-0.14%	73.63	897.23	1362.35	10.97%	1048.10	15.72%	-3.37%	11.64%
INDUSINDBK	901.95	-34.80	-3.71%	160.14	1445.08	1576.35	42.78%	881.10	2.37%	-13.19%	-40.10%
INFY	1700.05	14.05	0.83%	75.59	1287.40	2006.45	15.27%	1358.35	25.16%	-11.43%	4.30%
ITC	404.80	0.90	0.22%	97.85	396.00	528.50	23.41%	391.20	3.48%	-6.26%	-2.33%
JSWSTEEL	1010.50	-0.65	-0.06%	18.55	189.57	1063.00	4.94%	761.75	32.66%	3.10%	21.83%
KOTAKBANK	1920.00	-15.40	-0.80%	22.29	430.46	1994.90	3.75%	1543.85	24.36%	0.32%	10.72%
LT	3177.80	-66.90	-2.06%	17.78	569.14	3963.50	19.82%	3141.00	1.17%	-2.76%	-11.76%
M&M	2699.00	-28.85	-1.06%	25.21	682.21	3270.95	17.49%	1788.80	50.88%	-14.71%	43.76%
MARUTI	11571.40	-92.75	-0.80%	1.54	178.75	13680.00	15.41%	10725.00	7.89%	-10.62%	1.34%
NESTLEIND	2247.00	8.55	0.38%	5.07	114.25	2778.00	19.11%	2110.00	6.49%	0.60%	-12.59%
NTPC	329.10	-0.45	-0.14%	113.83	375.69	448.45	26.61%	292.80	12.40%	3.98%	-6.43%
ONGC	223.29	-9.60	-4.12%	164.89	373.00	345.00	35.28%	215.48	3.62%	-6.43%	-16.26%
POWERGRID	271.25	7.95	3.02%	302.34	819.46	366.25	25.94%	247.30	9.68%	-5.34%	-10.03%
RELIANCE	1237.70	-12.10	-0.97%	119.31	1486.43	1608.80	23.07%	1156.00	7.07%	-1.33%	-57.75%
SBILIFE	1412.10	0.50	0.04%	10.93	155.04	1936.00	27.06%	1307.70	7.98%	-4.03%	-6.54%
SBIN	727.70	-5.05	-0.69%	74.00	541.91	912.00	20.21%	680.00	7.01%	-0.60%	-7.02%
SHRIRAMFIN	625.00	-5.85	-0.93%	49.06	309.20	730.45	14.44%	438.60	42.50%	12.74%	-74.25%
SUNPHARMA	1610.00	0.70	0.04%	16.01	258.22	1960.35	17.87%	1377.20	16.90%	-8.03%	0.22%
TATACONSUM	956.00	-6.05	-0.63%	16.60	159.78	1256.44	23.91%	882.90	8.28%	-5.79%	-23.74%
TATAMOTORS	646.25	-2.05	-0.32%	103.09	668.81	1179.00	45.19%	606.30	6.59%	-8.27%	-37.62%
TATASTEEL	150.65	-0.91	-0.60%	544.50	829.00	184.60	18.39%	122.62	22.86%	9.58%	-3.62%
TCS	3589.00	-22.20	-0.61%	10.05	361.88	4592.25	21.85%	3457.00	3.82%	-10.38%	-12.11%
TECHM	1485.80	-6.55	-0.44%	7.98	119.02	1807.70	17.81%	1162.95	27.76%	-11.80%	15.85%
TITAN	3027.60	-51.75	-1.68%	8.55	260.21	3867.00	21.71%	3017.00	0.35%	-10.09%	-18.68%
TRENT	4794.45	-205.40	-4.11%	12.18	592.53	8345.00	42.55%	3840.30	24.85%	-8.33%	26.51%
ULTRACEMCO	10478.50	-103.90	-0.98%	1.66	174.56	12145.35	13.72%	9250.00	13.28%	-9.09%	9.40%
WIPRO	280.80	-4.00	-1.40%	81.65	229.70	324.60	13.49%	208.50	34.68%	-10.44%	-44.75%

## Disclaimer / Disclosures

### ANALYST CERTIFICATION

I, Mrs. Vaishali Parekh B.com, Research Analyst, author and the name subscribed to this report, hereby certify that all of the views expressed in this research report accurately reflect our views about the subject issuer(s) or securities. We also certify that no part of our compensation was, is, or will be directly or indirectly related to the specific recommendation(s) or view(s) in this report.

Terms & conditions and other disclosures:

Prabhudas Lilladher Pvt. Ltd, Mumbai, India (hereinafter referred to as "PL") is engaged in the business of Stock Broking, Portfolio Manager, Depository Participant and distribution for third party financial products. PL is a subsidiary of Prabhudas Lilladher Advisory Services Pvt Ltd. which has its various subsidiaries engaged in business of commodity broking, investment banking, financial services (margin funding) and distribution of third party financial/other products, details in respect of which are available at [www.plindia.com](http://www.plindia.com)

This document has been prepared by the Research Division of PL and is meant for use by the recipient only as information and is not for circulation. This document is not to be reported or copied or made available to others without prior permission of PL. It should not be considered or taken as an offer to sell or a solicitation to buy or sell any security.

The information contained in this report has been obtained from sources that are considered to be reliable. However, PL has not independently verified the accuracy or completeness of the same. Neither PL nor any of its affiliates, its directors or its employees accepts any responsibility of whatsoever nature for the information, statements and opinion given, made available or expressed herein or for any omission therein.

Recipients of this report should be aware that past performance is not necessarily a guide to future performance and value of investments can go down as well. The suitability or otherwise of any investments will depend upon the recipient's particular circumstances and, in case of doubt, advice should be sought from an independent expert/advisor.

Either PL or its affiliates or its directors or its employees or its representatives or its clients or their relatives may have position(s), make market, act as principal or engage in transactions of securities of companies referred to in this report and they may have used the research material prior to publication.

PL may from time to time solicit or perform investment banking or other services for any company mentioned in this document.

PL is registered as Research Analyst under Securities and Exchange Board of India (Research Analysts) Regulations, 2014 PL submits that no material disciplinary action has been taken on us by any Regulatory Authority impacting Equity Research Analysis activities.

PL or its research analysts or its associates or his relatives do not have any financial interest in the subject company.

PL or its research analysts or its associates or his relatives do not have actual/beneficial ownership of one per cent or more securities of the subject company at the end of the month immediately preceding the date of publication of the research report.

PL or its research analysts or its associates or his relatives do not have any material conflict of interest at the time of publication of the research report.

PL or its associates might have received compensation from the subject company in the past twelve months.

PL or its associates might have managed or co-managed public offering of securities for the subject company in the past twelve months or mandated by the subject company for any other assignment in the past twelve months.

PL or its associates might have received any compensation for investment banking or merchant banking or brokerage services from the subject company in the past twelve months.

PL or its associates might have received any compensation for products or services other than investment banking or merchant banking or brokerage services from the subject company in the past twelve months PL or its associates might have received any compensation or other benefits from the subject company or third party in connection with the research report.

PL encourages independence in research report preparation and strives to minimize conflict in preparation of research report. PL or its analysts did not receive any compensation or other benefits from the subject Company or third party in connection with the preparation of the research report. PL or its Research Analysts do not have any material conflict of interest at the time of publication of this report.

It is confirmed that Mrs.Vaishali Parekh B.com, Research Analyst of this report has not received any compensation from the companies mentioned in the report in the preceding twelve months compensation of our Research Analysts is not based on any specific merchant banking, investment banking or brokerage service transactions.

The Research analysts for this report certifies that all of the views expressed in this report accurately reflect his or her personal views about the subject company or companies and its or their securities, and no part of his or her compensation was, is or will be, directly or indirectly related to specific recommendations or views expressed in this report.

The research analysts for this report has not served as an officer, director or employee of the subject company PL or its research analysts have not engaged in market making activity for the subject company

Our sales people, traders, and other professionals or affiliates may provide oral or written market commentary or trading strategies to our clients that reflect opinions that are contrary to the opinions expressed herein, and our proprietary trading and investing businesses may make investment decisions that are inconsistent with the recommendations expressed herein. In reviewing these materials, you should be aware that any or all of the foregoing, among other things, may give rise to real or potential conflicts of interest.

PL and its associates, their directors and employees may (a) from time to time, have a long or short position in, and buy or sell the securities of the subject company or (b) be engaged in any other transaction involving such securities and earn brokerage or other compensation or act as a market maker in the financial instruments of the subject company or act as an advisor or lender/borrower to the subject company or may have any other potential conflict of interests with respect to any recommendation and other related information and opinions.