

Date: 10th October 2025

* Sensex 82172.10 + 398.44

* Nifty 25181.80 + 135.65

* Bank Nifty 56192.05 + 173.80

Market Preview

Nifty recovers; sustains 25000 zone

Nifty once again witnessed a decent pullback from the 25000 zone to signify strength and can anticipate for further rise in the coming days with 24900 level positioned as the important support. BankNifty having indicated a positive move sustaining above the 55700 zone, has once again improved the bias to anticipate fresh upward move having targets of 57300 and 57700 levels in the near future. The market breadth was overall flat with the advance decline indicating a neutral ratio at close.

Market Forecast

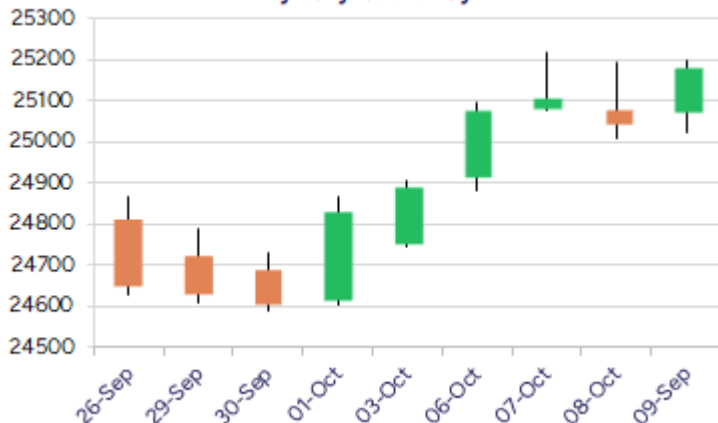
Nifty daily range 25000 - 25400

Nifty having found support near the 25000 zone has witnessed a good recovery to improve the bias once again touching the 25200 zone with optimistic view maintained for further rise in the coming sessions. The index, as said earlier, would need a decisive breach above the important hurdle at 25300 zone to establish conviction and clarity to carry on further ahead with the ongoing uptrend with the 50EMA level at 24900 zone positioned as the important support.

BankNifty, after a short period of consolidation maintaining above the important 100 period SMA at 55700 zone has indicated a decent recovery to end near the 56200 zone with bias once again improving expecting for further rise in the coming sessions. The Inverted Head & Shoulder neckline zone at 55600 level has been sustained and once a decisive move above 56500 level is confirmed, we can anticipate for further upward move for target of 57700 zone in the coming days with frontline banking stocks well poised for further gains.

The support for the day is seen at 25000 levels, while the resistance is seen at 25400 levels. BankNifty would have the daily range of 55800-57000 levels.

Nifty daily last 10 days



Nifty Weekly last 10 weeks

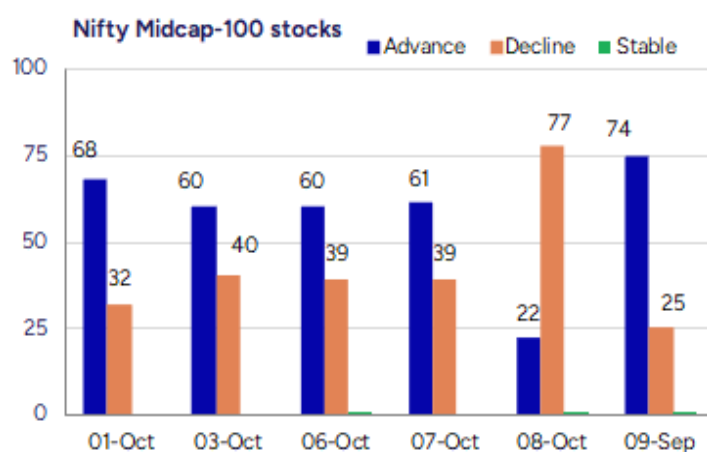
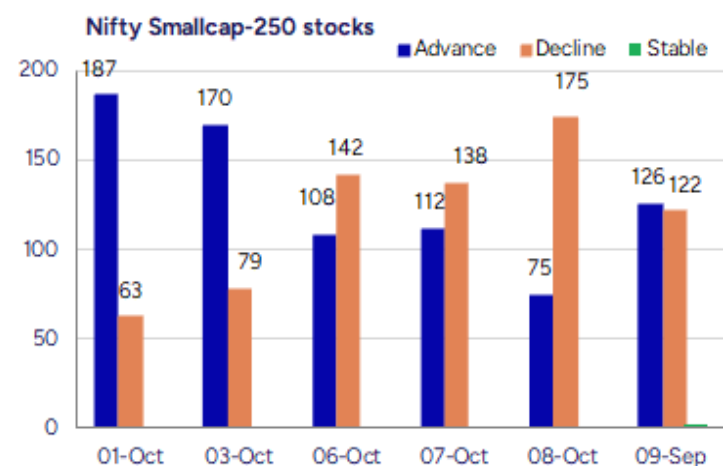


*Blue candle → Close rate > Open rate * Red candle → Close rate < Open rate

Indices	Period	Closing	% Chng	Trend	Reversal	2 Sup	1 Sup	Pivot	1 Res	2 Res
Nifty	Daily	25181.80	0.54%	6	24996.50	24960	25071	25135	25246	25310
	Weekly	24894.25	0.97%	-2	24965.40	24481	24688	24796	25003	25111
	Monthly	24611.10	0.75%	-2	25016.70	23820	24215	24828	25224	25837
Bank Nifty	Daily	56192.05	0.31%	6	55942.80	55665	55929	56107	56371	56550
	Weekly	55589.25	2.21%	1	54884.30	53759	54674	55145	56060	56532
	Monthly	54635.85	1.83%	-2	56782.20	52417	53526	54680	55789	56942
Sensex	Daily	82172.10	0.49%	6	81542.60	81449	81811	82029	82391	82609
	Weekly	81207.17	0.97%	-2	81369.00	79799	80503	80877	81582	81956
	Monthly	80267.62	0.57%	-3	82019.05	77784	79026	81071	82312	84357

Gainers - Losers (Nifty 500 Stocks)

Gainers				Losers			
Company Name	Last Price	% Gain	Volume	Company Name	Last Price	% Loss	Volume
Jindal Photo	1386.7	20	77368	TechD Cybersecu	612.65	-19.63	561000
Nagreeka Cap	36.5	19.99	241887	Niraj Cement	38	-13.77	812219
Hybrid Fin Ser	22.39	19.03	902174	Inspire Films	15.75	-10.76	22000
Kaushalya Logis	63	16.67	70400	Shankara Buildi	138.09	-9.59	1952184
WE WIN	69.33	16.25	617213	Sumeet Ind	33.57	-9.02	1060967
GM Breweries	883.85	15.67	5328413	Master Compo.	355	-8.74	3000
Dynamatic Tech	7760	13.47	284976	Eimco Elecon	2103.9	-8.57	1225331



Nifty Daily chart with RSI indicator



BankNifty Daily chart with RSI indicator



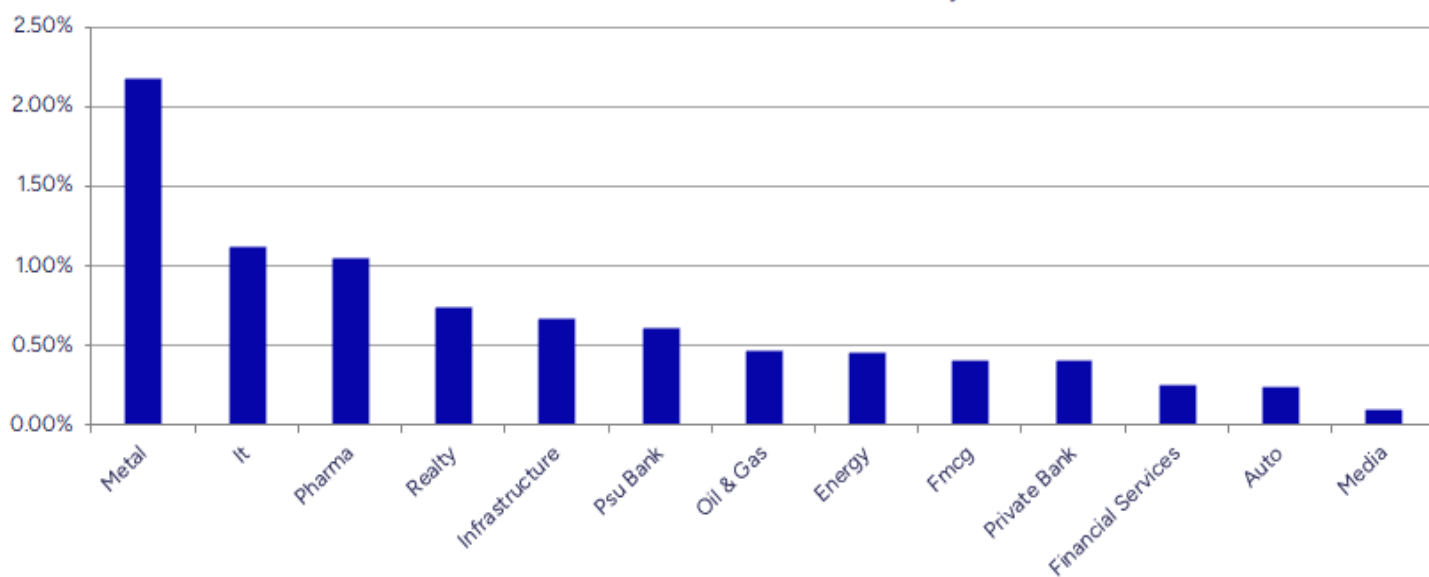
Breakouts - Cross above 200 DMA			
Company Name	LCP	Change %	200 DMA
Dynumatic Tech	7760	12.84	6877.12
Orient Bell	305.7	7.49	284.39
Ausom Enterp	102.78	4.38	98.47
Fidel Softech	174	3.68	167.83
Renaissance	135.97	3.64	131.19
Airo Lam	111.81	3.51	108.02
Praxis Home Ret	13.76	3.15	13.34
Xelpmoc Design	105.79	2.39	103.32
Madhav Copper	52.5	2.38	51.28
Sunflag Iron	269.85	2.11	264.27
MSTC	544.35	2.09	533.22
Guj Heavy Chem	633.55	1.97	621.32
Sky Gold	337	1.90	330.72
Wanbury	260.5	1.83	255.82
Robust Hotels	251.35	1.80	246.9
ABM Inter	54.26	1.50	53.46
Berger Paints	533	1.24	526.46
Cipla	1513.1	1.09	1496.83

* Stocks crossing above its Simple Moving Average (200DMA)

Breakdown - Cross below 200 DMA			
Company Name	LCP	Change %	200 DMA
Sharp Chucks	95	-5.26	100.27
Onelife Capital	12.3	-4.50	12.88
STL Global	14.24	-2.86	14.66
Softech Engine	373.05	-2.42	382.3
Brightcom Group	14.29	-2.26	14.62
OM Infra	123.87	-1.99	126.38
Camlin Fine	196.33	-1.78	199.89
Mega Flex	55	-1.63	55.91
Zenithexpo	247.6	-1.59	251.61
Jullundur Motor	88.63	-1.39	89.88
Repco Home	382.15	-1.20	386.78
Deep Ind	486.5	-1.15	492.14
Taj GVK Hotels	419	-1.01	423.29
Hb Stockhol	87.63	-0.90	88.43
Ruby Mills	219.49	-0.85	221.38
Ent Network Ind	149.37	-0.68	150.4
DOMS Industries	2556.4	-0.66	2573.28
Andhra Paper	79.32	-0.59	79.79

* Stocks crossing below its Simple Moving Average (200DMA)

Sectoral Indices - Gainers Losers for the day



Stocks witnessing a volume surge as compared to their 5 day average volume

Watch out for the stocks that have seen a huge spurt in its share price over the last three days

Volume Shockers - NSE					
Company name	LCP	% Chg	Volume	Avg Vol *	% Chg
Jindal PolyFilm	598.6	7.23	5087392	36841	13709
Themis Medicare	137.71	11	15306400	113572	13377
Jindal Poly Inv	1032.4	11.58	518940	6383	8030
Sigma Solve	52	-1.89	617393	9030	6737
GM Breweries	883.85	15.67	5328413	96502	5422
Atal	22.97	1.01	4881156	100889	4738
HYBRIDFIN	22.43	19.25	901173	21360	4119
Jindal Worldwid	38.38	9.85	22993195	559798	4007
R M Drip & Spri	69.2	-0.29	358585	9800	3559
Keynote Finance	331.7	11.31	200678	5696	3423
Manali Petro	70.44	9.01	8108766	240742	3268
Heads UP Vent	11.1	-5.29	1475869	63518	2224
Shankara Buildi	138.61	-9.25	1929625	85113	2167
WE WIN	69.33	16.25	617213	30235	1941
Nagreeka Cap	36.5	19.99	241887	12139	1893
Cool Caps	81.9	-1.56	162500	8400	1835
Netweb	4070.6	-6.64	2767859	163390	1594
California Soft	17.42	-3.28	503307	30079	1573
Usha Martin	481.6	7.96	8797843	539221	1532
Cupid	240.29	11.86	23923670	1551757	1442

* the Average Volume of last 5 days

Price Shockers - NSE				
Company name	LCP	Prv Close	% Chg	Volume
WE WIN	69.33	49	41.49	617213
Hybrid Fin Ser	22.39	15.85	41.26	902174
Keynote Finance	331.7	247.71	33.91	200678
Nagreeka Cap	36.5	27.99	30.4	241887
Palred Tech	66.91	52.67	27.04	44388
Jindal Photo	1386.7	1121.6	23.64	77368
Stallion India	334.55	271	23.45	3490473
Hercules Hoists	212.01	171.77	23.43	1156893
ABM Inter	54.26	44.29	22.51	6145
Saatvik Green	551.7	453.9	21.55	3815520
GM Breweries	883.85	736.1	20.07	5328413
Sky Gold	337	282.4	19.33	3422868
Kalyani Forge	785	670.3	17.11	26310
Orbit Exports	220.43	189.84	16.11	57721
Maan Aluminium	129.43	111.73	15.84	169765
BGR Energy	319.6	276.1	15.76	143925
Sejal Glass	852.3	736.3	15.75	20126
Dreamfolks Ser.	120.34	103.97	15.74	68828
Eastern Silk	57.64	49.8	15.74	67
Karma Energy	63.34	54.73	15.73	16980

* the % price rise of the last 3 days

Nifty 50 stocks - Summary Details											
Symbol	LTP	Chng	% Chng	Volume (lacs)	Turnover (crs.)	52w High	Diff with 52w H	52w Low	Diff with 52w L	365 days % chng	30 days % chng
NIFTY 50	25181.80	135.65	0.54%	2862.18	22614.88	25669.35	1.90%	21743.65	15.81%	1.23%	1.01%
ADANIENT	2547.00	22.90	0.91%	6.52	165.83	3211.00	20.68%	2025.00	25.78%	10.64%	-16.37%
ADANIPTS	1395.40	1.10	0.08%	12.51	174.42	1494.00	6.60%	995.65	40.15%	5.48%	2.89%
APOLLOHOSP	7700.00	38.00	0.50%	2.96	227.83	7980.00	3.51%	6001.00	28.31%	-1.83%	13.12%
ASIANPAINT	2340.00	11.50	0.49%	5.87	137.04	3146.70	25.64%	2124.75	10.13%	-9.74%	-23.96%
AXISBANK	1168.10	-12.50	-1.06%	71.93	841.82	1247.00	6.33%	933.50	25.13%	11.81%	3.05%
BAJAJ-AUTO	8812.00	20.00	0.23%	2.17	190.55	12030.95	26.76%	7089.35	24.30%	-3.22%	-24.32%
BAJAJFINSV	2012.00	-1.60	-0.08%	4.37	88.12	2135.00	5.76%	1551.65	29.67%	-0.04%	7.15%
BAJFINANCE	1022.50	-0.65	-0.06%	44.44	454.39	1036.00	1.30%	645.10	58.50%	9.12%	-85.93%
BEL	409.90	6.25	1.55%	90.34	367.67	436.00	5.99%	240.25	70.61%	8.86%	50.98%
BHARTIARTL	1941.00	-2.50	-0.13%	39.45	765.55	2045.80	5.12%	1511.00	28.46%	2.54%	16.93%
CIPLA	1513.40	18.80	1.26%	8.78	132.67	1702.05	11.08%	1335.00	13.36%	-3.79%	-8.00%
COALINDIA	383.30	1.20	0.31%	46.28	177.70	502.45	23.71%	349.25	9.75%	-2.69%	-20.47%
DRREDDY	1246.00	11.50	0.93%	26.99	338.61	1405.90	11.37%	1020.00	22.16%	-2.65%	-81.32%
EICHERMOT	6880.00	-22.50	-0.33%	4.06	279.77	7122.50	3.40%	4508.75	52.59%	4.89%	47.87%
ETERNAL	345.50	3.85	1.13%	234.96	811.52	347.50	0.58%	194.80	77.36%	3.80%	#VALUE!
GRASIM	2805.10	26.90	0.97%	4.05	113.29	2911.00	3.64%	2276.95	23.20%	-0.92%	2.12%
HCLTECH	1484.50	31.30	2.15%	26.81	397.26	2012.20	26.23%	1302.75	13.95%	2.41%	-18.22%
HDFCBANK	975.00	-3.70	-0.38%	153.71	1500.16	1018.85	4.30%	811.00	20.22%	1.59%	-39.50%
HDFCLIFE	753.70	6.40	0.86%	44.76	335.12	820.75	8.17%	584.30	28.99%	-1.61%	5.87%
HINDALCO	774.50	6.30	0.82%	68.06	527.73	790.60	2.04%	546.45	41.73%	3.28%	5.05%
HINDUNILVR	2522.40	22.30	0.89%	12.59	316.55	2886.00	12.60%	2136.00	18.09%	-5.06%	-11.76%
ICICIBANK	1374.00	3.70	0.27%	79.10	1087.16	1500.00	8.40%	1186.00	15.85%	-2.32%	11.05%
INDIGO	5720.50	85.50	1.52%	6.68	381.63	6232.50	8.22%	3780.00	51.34%	-0.62%	25.64%
INFY	1509.70	14.70	0.98%	70.27	1057.01	2006.45	24.76%	1307.00	15.51%	3.49%	-22.71%
ITC	399.30	-0.45	-0.11%	156.55	626.13	512.55	22.10%	390.15	2.35%	-1.87%	-21.65%
JIOFIN	307.15	2.50	0.82%	62.74	192.51	349.70	12.17%	198.65	54.62%	-1.54%	-9.42%
JSWSTEEL	1172.00	26.80	2.34%	20.01	234.18	1178.80	0.58%	880.00	33.18%	6.72%	12.41%
KOTAKBANK	2140.90	23.10	1.09%	31.65	675.53	2301.90	6.99%	1679.05	27.51%	8.86%	18.30%
LT	3764.10	34.30	0.92%	18.27	688.65	3963.50	5.03%	2965.30	26.94%	4.96%	7.54%
M&M	3436.00	9.50	0.28%	19.98	687.58	3723.80	7.73%	2425.00	41.69%	-3.79%	11.97%
MARUTI	15948.00	-64.00	-0.40%	3.00	479.04	16435.00	2.96%	10725.00	48.70%	7.50%	27.81%
MAXHEALTH	1155.80	11.40	1.00%	30.52	352.73	1314.30	12.06%	888.90	30.03%	-2.19%	24.88%
NESTLEIND	1187.00	6.50	0.55%	9.22	109.12	1297.00	8.48%	1055.00	12.51%	-2.32%	-54.13%
NTPC	335.80	2.00	0.60%	68.24	228.30	429.90	21.89%	292.80	14.69%	1.55%	-19.65%
ONGC	243.36	1.55	0.64%	92.91	225.87	293.90	17.20%	205.00	18.71%	3.28%	-16.46%
POWERGRID	285.75	0.45	0.16%	107.14	305.49	345.40	17.27%	247.30	15.55%	-0.02%	-13.27%
RELIANCE	1376.50	9.10	0.67%	88.26	1214.64	1551.00	11.25%	1114.85	23.47%	-0.55%	-50.12%
SBILIFE	1813.00	40.10	2.26%	8.48	152.35	1912.00	5.18%	1372.55	32.09%	-1.79%	-0.84%
SBIN	861.40	3.15	0.37%	70.20	604.78	880.50	2.17%	680.00	26.68%	6.40%	11.37%
SHRIRAMFIN	668.50	1.60	0.24%	22.74	152.03	717.50	6.83%	493.35	35.50%	12.56%	-79.79%
SUNPHARMA	1654.60	23.00	1.41%	21.98	362.79	1947.00	15.02%	1548.00	6.89%	2.38%	-14.36%
TATACONSUM	1115.00	-5.20	-0.46%	8.53	95.46	1180.50	5.55%	882.90	26.29%	4.46%	0.79%
TATAMOTORS	684.40	2.85	0.42%	161.99	1093.62	948.45	27.84%	535.75	27.75%	-1.47%	-26.55%
TATASTEEL	176.21	4.27	2.48%	685.01	1207.19	177.82	0.91%	122.62	43.70%	2.54%	4.61%
TCS	3060.20	33.00	1.09%	32.10	977.89	4494.90	31.92%	2866.60	6.75%	-0.69%	-29.15%
TECHM	1463.10	4.90	0.34%	13.54	198.44	1807.70	19.06%	1209.40	20.98%	-1.33%	-9.91%
TITAN	3544.00	-21.60	-0.61%	5.98	211.95	3740.00	5.24%	2925.00	21.16%	-2.72%	-0.66%
TRENT	4663.10	46.50	1.01%	7.49	347.44	8345.00	44.12%	4488.00	3.90%	-16.49%	-38.03%
ULTRACEMCO	12163.00	172.00	1.43%	1.72	208.09	13097.00	7.13%	10047.85	21.05%	-4.84%	6.77%
WIPRO	246.40	2.13	0.87%	46.25	113.66	324.60	24.09%	228.00	8.07%	0.25%	-54.04%

Disclaimer / Disclosures

ANALYST CERTIFICATION

I, Mrs. Vaishali Parekh B.com, Research Analyst, author and the name subscribed to this report, hereby certify that all of the views expressed in this research report accurately reflect our views about the subject issuer(s) or securities. We also certify that no part of our compensation was, is, or will be directly or indirectly related to the specific recommendation(s) or view(s) in this report.

Terms & conditions and other disclosures:

Prabhudas Lilladher Pvt. Ltd, Mumbai, India (hereinafter referred to as "PL") is engaged in the business of Stock Broking, Portfolio Manager, Depository Participant and distribution for third party financial products. PL is a subsidiary of Prabhudas Lilladher Advisory Services Pvt Ltd. which has its various subsidiaries engaged in business of commodity broking, investment banking, financial services (margin funding) and distribution of third party financial/other products, details in respect of which are available at www.plindia.com

This document has been prepared by the Research Division of PL and is meant for use by the recipient only as information and is not for circulation. This document is not to be reported or copied or made available to others without prior permission of PL. It should not be considered or taken as an offer to sell or a solicitation to buy or sell any security.

The information contained in this report has been obtained from sources that are considered to be reliable. However, PL has not independently verified the accuracy or completeness of the same. Neither PL nor any of its affiliates, its directors or its employees accepts any responsibility of whatsoever nature for the information, statements and opinion given, made available or expressed herein or for any omission therein.

Recipients of this report should be aware that past performance is not necessarily a guide to future performance and value of investments can go down as well. The suitability or otherwise of any investments will depend upon the recipient's particular circumstances and, in case of doubt, advice should be sought from an independent expert/advisor.

Either PL or its affiliates or its directors or its employees or its representatives or its clients or their relatives may have position(s), make market, act as principal or engage in transactions of securities of companies referred to in this report and they may have used the research material prior to publication.

PL may from time to time solicit or perform investment banking or other services for any company mentioned in this document.

PL is registered as Research Analyst under Securities and Exchange Board of India (Research Analysts) Regulations, 2014 PL submits that no material disciplinary action has been taken on us by any Regulatory Authority impacting Equity Research Analysis activities.

PL or its research analysts or its associates or his relatives do not have any financial interest in the subject company.

PL or its research analysts or its associates or his relatives do not have actual/beneficial ownership of one per cent or more securities of the subject company at the end of the month immediately preceding the date of publication of the research report.

PL or its research analysts or its associates or his relatives do not have any material conflict of interest at the time of publication of the research report.

PL or its associates might have received compensation from the subject company in the past twelve months.

PL or its associates might have managed or co-managed public offering of securities for the subject company in the past twelve months or mandated by the subject company for any other assignment in the past twelve months.

PL or its associates might have received any compensation for investment banking or merchant banking or brokerage services from the subject company in the past twelve months.

PL or its associates might have received any compensation for products or services other than investment banking or merchant banking or brokerage services from the subject company in the past twelve months PL or its associates might have received any compensation or other benefits from the subject company or third party in connection with the research report.

PL encourages independence in research report preparation and strives to minimize conflict in preparation of research report. PL or its analysts did not receive any compensation or other benefits from the subject Company or third party in connection with the preparation of the research report. PL or its Research Analysts do not have any material conflict of interest at the time of publication of this report.

It is confirmed that Mrs.Vaishali Parekh B.com, Research Analyst of this report has not received any compensation from the companies mentioned in the report in the preceding twelve months compensation of our Research Analysts is not based on any specific merchant banking, investment banking or brokerage service transactions.

The Research analysts for this report certifies that all of the views expressed in this report accurately reflect his or her personal views about the subject company or companies and its or their securities, and no part of his or her compensation was, is or will be, directly or indirectly related to specific recommendations or views expressed in this report.

The research analysts for this report has not served as an officer, director or employee of the subject company PL or its research analysts have not engaged in market making activity for the subject company

Our sales people, traders, and other professionals or affiliates may provide oral or written market commentary or trading strategies to our clients that reflect opinions that are contrary to the opinions expressed herein, and our proprietary trading and investing businesses may make investment decisions that are inconsistent with the recommendations expressed herein. In reviewing these materials, you should be aware that any or all of the foregoing, among other things, may give rise to real or potential conflicts of interest.

PL and its associates, their directors and employees may (a) from time to time, have a long or short position in, and buy or sell the securities of the subject company or (b) be engaged in any other transaction involving such securities and earn brokerage or other compensation or act as a market maker in the financial instruments of the subject company or act as an advisor or lender/borrower to the subject company or may have any other potential conflict of interests with respect to any recommendation and other related information and opinions.