

### Key Indices Update

Indices	Close	Change (%)
Nifty	22,968.25	1.12↑
Sensex	74,106.85	1.07↑
Midcap	54,492.65	1.52↑
Smallcap	15,853.05	1.29↑

### Trend Strength Indicator

Nifty 50 Stocks above 200 EMA	NSE Advance / Decline
13	2511/745

### Key Data

Data	Current	Previous
Dow Jones	46,718.5	46,397.9
U.S. Dollar Index	100.04	100.25
Brent Crude (USD/BBL)	109.39	110.80
US 10Y Bond Yield (%)	4.33	4.37
India 10Y Bond Yield (%)	7.05	7.11

### Sectoral Data

Sector	Close	Change (%)
BANKNIFTY	52585.35	2.01↑
NIFTYAUTO	24350.60	1.08↑
NIFTYENERG	35388.30	0.25↑
NIFTYFINSR	26779.75	2.17↑
NIFTYFMCG	46592.40	0.78↑
NIFTYIT	30626.70	0.61↑
NIFTYMEDIA	1302.40	0.07↓
NIFTYMETAL	11571.20	1.00↑
NIFTYPHARM	21866.00	0.26↑
NIFTYREALT	687.30	2.26↑

## Fundamental

Refer Page 02

### Stock for Investment

Stock Name	Sector	*CMP (₹)	^TP (₹)	Upside
TITAN	Consumer Goods	4,244	4,989	17.6%

\*CMP as on April 06 2026

### Top News

- ✦ **Vedanta Ltd reported a mixed Q4FY26, with aluminium and domestic zinc up 2% and power sales jumping 43%.** However, iron ore, steel, copper, and international zinc saw slight declines. Oil & gas output fell sharply by 15%, impacting overall performance.
- ✦ **Oil India Limited has ramped up crude output from its Baghewala field by over 70% to 1,202 barrels/day, amid global uncertainties.** The Rajasthan field also saw strong momentum, with annual production rising 34% to 43,773 tonnes in FY26.

## Technical

Refer Page 03-04

- ✦ **Nifty witnessed a volatile session on Monday** but ended with gains of over 1%.
- ✦ **The Nifty opened on a muted note amid mixed global cues and elevated crude oil prices,** and slipped lower in early trade.
- ✦ Going ahead, **a break above the 23,000 mark could further extend the up move towards the 23,400–23,500 zone,** where the hurdle of the short-term moving average (20 DEMA) is placed.
- ✦ On the downside, **support is seen in the 22,500–22,000 range.**
- ✦ Given the elevated volatility, **traders are advised to maintain a cautious stance and focus on stock-specific opportunities—**favoring relatively strong counters for long positions and laggards for shorting opportunities.
- ✦ **Stock of the day – SAIL**

## Fundamental

### Top News

01

**Vedanta Ltd reported a mixed Q4FY26, with aluminium and domestic zinc up 2% and power sales jumping 43%.** However, iron ore, steel, copper, and international zinc saw slight declines. Oil & gas output fell sharply by 15%, impacting overall performance.

02

**Oil India Limited has ramped up crude output from its Baghewala field by over 70% to 1,202 barrels/day, amid global uncertainties.** The Rajasthan field also saw strong momentum, with annual production rising 34% to 43,773 tonnes in FY26.

03

**Maruti Suzuki India has added 502 new service touchpoints in FY 2025-26. This marks the highest-ever network expansion in a single financial year by the Company.** With this, Maruti Suzuki's total after-sales service network has reached to 5,926 touchpoints, covering 3,000 cities and towns in India.

04

**The Great Eastern Shipping Company Limited has agreed to sell its MR tanker Jag Prakash, with delivery slated for Q1 FY27, while maintaining a fleet of 40 vessels (3.20 mn dwt).** The company is also expanding capacity by acquiring a Kamsarmax dry bulk carrier and an MR tanker, both expected in Q1 FY27. This reflects ongoing fleet optimization by India's largest private shipping player.

05

**WeWork India Management Limited has signed over 700,000 sq. ft. of long-term leases across Bengaluru, Hyderabad, and Chennai, marking one of its largest expansions.** The move strengthens its South India leadership, with a current network of 37 centres across key office markets.

### Stock for Investment

### Titan Company Ltd

Stock Symbol	TITAN	<ul style="list-style-type: none"> <li> <b>Strong Q3FY26 Execution:</b> Titan posted solid Q3FY26 results, booking labour code impact upfront; subsidiaries' contribution improved.                 </li> </ul>
Sector	Consumer Goods	<ul style="list-style-type: none"> <li> <b>Jewellery Demand Steady:</b> Buyer growth was flat, new buyers rose, and ticket size hit ₹1.9 lakh on wedding demand and higher gold prices.                 </li> </ul>
*CMP (₹)	4,244	<ul style="list-style-type: none"> <li> <b>Margins Pressured, Focus Intact:</b> Higher gold prices hurt margins, but management targets absolute EBIT/PBT growth through scale and mix.                 </li> </ul>
^Target Price (₹)	4,989	<ul style="list-style-type: none"> <li> <b>Expansion Supports Outlook:</b> Lightweight, lower-karat jewellery boosts affordability; Damas consolidation from Q4 strengthens growth. Buy, target ₹4,989.                 </li> </ul>
Upside	17.6%	

\*CMP as on April 06, 2026

^Time horizon - upto 11 Months

## Technical

**Seeing rebound but caution warranted. Stay selective.**

### NIFTY

22968.25 ▲ 255.15 (1.12%)

S1

22550

S2

22200

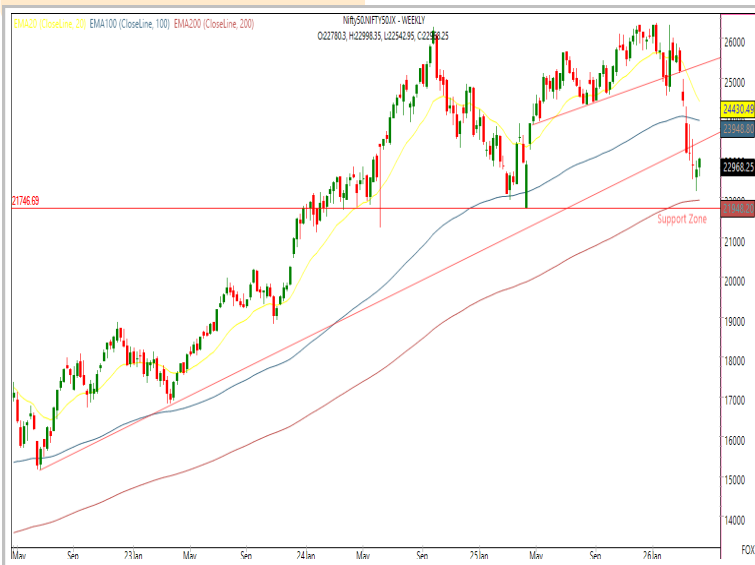
R1

23300

R2

23500

Technical Chart : **Weekly**



- ✦ **Nifty witnessed a volatile session on Monday** but ended with gains of over 1%.
- ✦ **The Nifty opened on a muted note amid mixed global cues and elevated crude oil prices**, and slipped lower in early trade.
- ✦ Going ahead, **a break above the 23,000 mark could further extend the up move towards the 23,400–23,500 zone**, where the hurdle of the short-term moving average (20 DEMA) is placed.
- ✦ Given the elevated volatility, **traders are advised to maintain a cautious stance and focus on stock-specific opportunities**—favoring relatively strong counters for long positions and laggards for shorting opportunities.

### BANKNIFTY

52609.10 ▲ 1060.35 (2.06%)

S1

51600

S2

51000

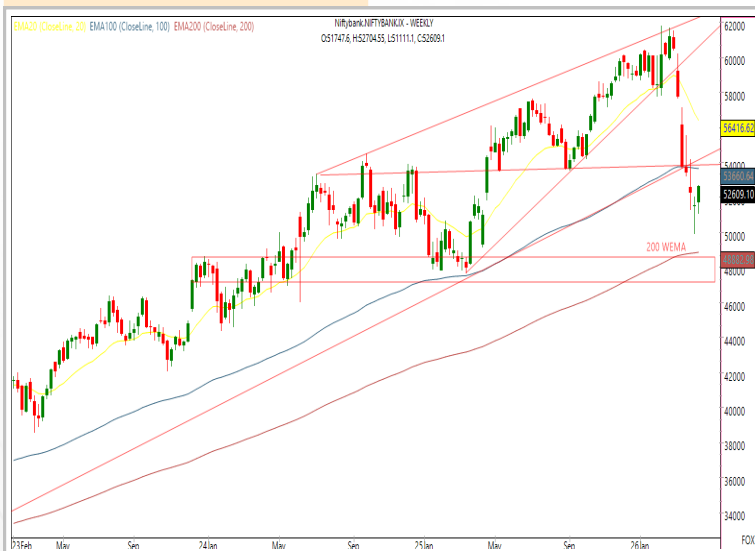
R1

53400

R2

54200

Technical Chart : **Weekly**



- ✦ **The banking index extended its upward momentum for a third consecutive session;** however, it continues to trade significantly below key short-term moving averages, indicating underlying weakness.
- ✦ **The index opened in line with the previous close and exhibited sustained intraday strength**, ultimately settling in positive territory.
- ✦ **Broad-based buying was observed across the sector**, with all constituents closing higher, led by Bank of Baroda and Axis Bank.
- ✦ Immediate **resistance is placed near 54,200**, while strong **support is seen around 51,000**.

Technical

Stock of the day	Recom.	CMP (₹)	Range*	SL	Target
<b>SAIL</b>	<b>BUY</b>	160.44	159-161	155	170

Technical Chart : Daily



- ✦ **SAIL exhibits a constructive price structure characterized by a sustained higher high-higher low sequence, confirming a prevailing uptrend.**
- ✦ **The formation indicates potential for more upside, supported by rising volumes while pullbacks would provide buy on dips opportunities.**
- ✦ **A breakout above the recent swing high reinforces bullish momentum, while the trend remains intact as long as key support levels hold.**
- ✦ **Investors may consider initiating long positions within the defined range.**

Momentum Stocks Midcap	Name	Price	Price %
	KALYANKJIL	420.00	6.50↗
	SUVEN	167.55	6.07↗
	STLTECH	188.20	5.83↗
	COHANCE	305.65	0.52↘
	CHEMPLASTS	250.00	2.48↘

Name	Price	Price %	Range Breakout/ Breakdown
ADANIGREEN	923.45	7.88↗	
IEX	126.00	5.51↗	
RBLBANK	317.00	5.32↗	
ASTRAL	1534.00	1.26↘	
RELIANCE	1305.60	3.32↘	

Top 5 F&O Gainers ↗	Name	Price	Price %
	ADANIGREEN	923.45	7.88↗
	TRENT	3825.00	7.73↗
	KALYANKJIL	420.00	6.50↗
	LTF	254.40	5.85↗
	IEX	126.00	5.51↗

Name	Price	Price %	Top 5 F&O Losers ↘
RELIANCE	1305.60	3.32↘	
OIL	470.05	2.10↘	
ONGC	281.60	1.95↘	
MARICO	750.50	1.43↘	
SWIGGY	271.80	1.29↘	

Bullish Charts	Name	Price	Price %
	ADANIENSOL	989.60	5.10↗
	DMART	4538.00	4.03↗
	NMDC	81.59	4.50↗
	PNBHOUSING	819.00	4.41↗
	RBLBANK	317.00	5.32↗

Name	Price	Price %	Bearish Charts
ASTRAL	1534.00	1.26↘	
BHEL	245.80	0.93↘	
EICHERMOT	6592.00	0.86↘	
MAXHEALTH	933.00	1.23↘	
PGEL	451.40	0.67↘	

## Research Team

Name	Email ID
<i>Ajit Mishra</i>	<a href="mailto:ajit.mishra@religare.com">ajit.mishra@religare.com</a>
<i>Abhijeet Banerjee</i>	<a href="mailto:abhijeet.banerjee@religare.com">abhijeet.banerjee@religare.com</a>
<i>Gaurav Sharma</i>	<a href="mailto:gauravsharma2@religare.com">gauravsharma2@religare.com</a>
<i>Ashwani Harit</i>	<a href="mailto:ashwani.harit@religare.com">ashwani.harit@religare.com</a>
<i>Divya Parmar</i>	<a href="mailto:divya.parmar@religare.com">divya.parmar@religare.com</a>
<i>Rajan Gupta</i>	<a href="mailto:rajan.gupta1@religare.com">rajan.gupta1@religare.com</a>
<i>Vivek Chandra</i>	<a href="mailto:vivek.chandra@religare.com">vivek.chandra@religare.com</a>
<i>Himanshu Gupta</i>	<a href="mailto:himanshu.gupta1@religare.com">himanshu.gupta1@religare.com</a>

## Disclaimer

Before you use this research report, please ensure to go through the disclosure inter-alia as required under Securities and Exchange Board of India (Research Analysts) Regulations, 2014 and Research Disclaimer at the following link: <https://www.religareonline.com/disclaimer>

**Specific analyst(s) specific disclosure(s) inter-alia as required under Securities and Exchange Board of India (Research Analysts) Regulations, 2014 is/ are as under:**

Statements on ownership and material conflicts of interest, compensation- Research Analyst (RA) [Please note that only in case of multiple RAs, if in the event answers differ inter-se between the RAs, then RA specific answer with respect to questions under F(a) to F(j) below, are given separately]:

S. No.	Statement	Answer	
		Yes	No
	I/we or any of my/our relative has any financial interest in the subject company? <b>[If answer is yes, nature of interest is given below this table]</b>		No
	I/we or any of my/our relatives, have actual/beneficial ownership of one percent. or more securities of the subject company, at the end of the month immediately preceding the date of publication of the research report or date of the public appearance?		No
	I/we or any of my/our relative, has any other material conflict of interest at the time of publication of the research report or at the time of public appearance?		No
	I/we have received any compensation from the subject company in the past twelve months?		No
	I/we have managed or co-managed public offering of securities for the subject company in the past twelve months?		No
	I/we have received any compensation for brokerage services from the subject company in the past twelve months?		No
	I/we have received any compensation for products or services other than brokerage services from the subject company in the past twelve months?		No
	I/we have received any compensation or other benefits from the subject company or third party in connection with the research report?		No
	I/we have served as an officer, director or employee of the subject company?		No
	I/we have been engaged in market making activity for the subject company?		No

Nature of Interest if answer to F(a) above is Yes: ..... Name(s) with Signature(s) of RA(s).

[Please note that only in case of multiple RAs and if the answers differ inter-se between the RAs, then RA specific answer with respect to questions under F(a) to F(j) above, are given below]

SS. No.	Name(s) of RA.	Signatures of RA	Serial Question of question which the signing RA needs to make a separate declaration / answer	Yes	No

Copyright in this document vests exclusively with RBL. This information should not be reproduced or redistributed or passed on directly or indirectly in any form to any other person or published, copied, in whole or in part, for any purpose, without prior written permission from RBL. We do not guarantee the integrity of any emails or attached files and are not responsible for any changes made to them by any other person.

*No representations are being made about the performance or activities unless accompanied by data regarding performance, disclosures of all the risk factors, etc. and disclaimer that "Such representations are not indicative of future results*

