



**Solid Research**  
**Solid Relationships**

# Fundamental Outlook

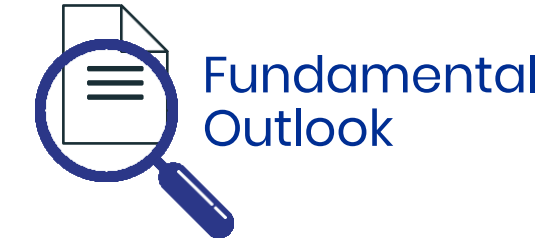
# Global Market Summary



- **US markets** on Friday, **gained >1%**, after a better-than-expected jobs report calmed worries about the economy, while renewed optimism over a potential U.S.-China trade agreement, boosted investor sentiments. The S&P 500 closed above 6,000 for the first time since Feb. 21, fueled by gains in technology shares.
- **Dow** was **up +1.1%**, **S&P 500** was **up 1%** and **Nasdaq closed up +1.2%**
- **European** markets **ended mix**, after ECB cut interest rate by 25bps
- Dow futures is currently **trading in red – down -0.1%**
- **Asian markets** are **trading 0.5-1.5% higher**, as US and China are set to resume trade negotiations, while positive jobs data in US eased recession fears.

**Global Cues: Weak**

# Indian Market Summary



- **Indian equities** ended with strong gains after the RBI MPC delivered surprise double liquidity booster for the markets with a 50 bps repo rate cut (vs. expected 25bps) and a 100bps CRR cut, while changing its stance to 'Neutral' from 'Accommodative'.
- **Nifty50** reclaimed the 25k mark, ending with **gains of 252 points (+1%) at 25,003.**
- **Nifty Midcap100 and Smallcap100 indices were up 1.2% and 0.8% respectively.**
- **FIIIs: +Rs1,010 cr DIIIs +Rs9,342cr**
- **GIFT Nifty is trading 75 points higher (+0.3%)**

**Domestic Cues: Positive**

# News & Impact



9-Jun-25

**BEL:** BEL has signed a MoU with Tata Electronics to explore opportunities in indigenous electronics and semiconductor development. The collaboration will focus on semiconductor fabrication (Fab), outsourced semiconductor assembly and test (OSAT), and design services. The solutions will cater to BEL's requirements for microcontrollers (MCUs), systems-on-chip (SoCs), and monolithic microwave integrated circuits (MMICs).

**Impact:** Positive

**Gold Loan stocks:** Positive sentiment for gold loan companies after RBI revised the loan-to-value (LTV) ratio for gold loans under ₹2.5 lakh from 75% to 85%.

**Impact:** Positive

**Garden Reach:** The company has signed Memorandums of Understanding (MoUs) in Sweden and Denmark to enhance its capabilities in the marine systems sector and to enter the expedition cruise segment. It partnered with Berg Propulsion (Sweden) to strengthen its marine equipment portfolio and with SunStone (Denmark) for collaboration in expedition cruise vessel development.

**Impact:** Positive

# Actionable Idea



9-Jun-25

## Time Technoplast

**CMP INR410, TP INR578, 41% Upside, Buy, MTF Stock**

- TIME is the world's largest manufacturer of large-size plastic drums, with an impressive 50-60% market share in India and a significant share in 10 other countries.
- It was the 1<sup>st</sup> company to launch intermediate bulk containers (IBC) in India and is now 3<sup>rd</sup> largest IBC manufacturer worldwide. Additionally, it ranks as 2<sup>nd</sup> largest global manufacturer of Type-IV composite LPG and CNG cylinders.
- We are optimistic about its value-added composite products (LPG/CNG cascade cylinders), stable and long-standing industrial packaging (drums, jerry cans, IBC etc.) business, and focus on improving financials to turn net debt-free over the next 1-2 years.
- After clocking a CAGR of 16%/19%/39% in revenue/EBITDA/PAT over FY21-25, we estimate a CAGR of 15%/16%/23% over FY25-28E, led by strong performance in its value-added product (VAP) segment (20% revenue CAGR, 18%+ EBITDA margin) and strong cash flow generation.
- Asset monetization, business restructuring, and cost reduction measures will improve operational efficiency and strengthen the balance sheet. We initiate coverage with a BUY rating and a target price of INR578 (41% upside potential), based on 22x FY27E P/E (close to sector average)

**View: Buy**

Investment in securities market are subject to market risks, read all the related documents carefully before investing.



# Actionable Idea

**MCX**

**CMP Rs 7415, MTF Stock**



9-Jun-25

- The Multi Commodity Exchange of India has received approval from SEBI (Securities and Exchange Board of India) to launch Electricity Derivatives.
- This product will allow generators, distribution companies, and large consumers to hedge against price volatility and manage associated risks in the electricity market
- With India's growing focus on renewable energy and open access power markets, electricity derivatives can serve as a vital bridge between the physical and financial sectors, as per management
- We expect MCX to register a Revenue/EBITDA/PAT CAGR of 24%/29%/27% over FY25-27E. MCX's key growth drivers include: 1) new product launches; 2) continued volatility in key commodity prices (gold, crude oil, and natural gas) amid global uncertainties; and 3) sustained growth momentum in retail participation in the options market..

**View: Positive**

Investment in securities market are subject to market risks, read all the related documents carefully before investing.

# Focus Ideas for the Month



Fundamental  
Outlook

9-Jun-25

All Stocks Available in MTF

Duration : 1 Year Horizon

Stock Name	Rating	CMP (Rs)	Target (Rs)	Upside (%)
Niva Bupa	Buy	83	100	20%
Nuvama Wealth	Buy	7,355	8,600	17%
Radico Khaitan	Buy	2,639	3,000	14%
ICICI Bank	Buy	1,460	1,650	13%
M&M	Buy	3,107	3,482	12%

Investment in securities market are subject to market risks, read all the related documents carefully before investing.



# Technical Outlook

# Nifty Technical Outlook



9-Jun-25

**NIFTY (CMP : 25003)** Nifty immediate support is at 24850 then 24700 zones while resistance at 25200 then 25400 zones. Now it has to hold above 25000 zones for an up move towards 25200 then 25400 levels while on the downside support is seen at 24850 then 24700 zones.

1-Nifty50 - 06/06/25



Investment in securities market are subject to market risks, read all the related documents carefully before investing.

# Bank Nifty Technical Outlook



9-Jun-25

**BANK NIFTY (CMP : 56578)** Bank Nifty support is at 56250 then 56000 zones while resistance at 57000 then 57250 zones. Now it has to hold above 56250 zones for an up move towards new life time high territory of 57000 then 57250 levels while on the downside support is seen at 56250 then 56000 zones.

1-Niftybank - 06/06/25



Investment in securities market are subject to market risks, read all the related documents carefully before investing.



# Sectoral Performance

9-Jun-25

	Closing	% Change			
Indices	06-Jun	1-day	2-days	3-days	5-days
NIFTY 50	25003	1.02%	1.56%	1.88%	1.02%
NIFTY BANK	56578	1.47%	1.62%	1.76%	1.49%
NIFTY MIDCAP 100	59010	1.21%	1.87%	2.60%	2.77%
NIFTY SMALLCAP 250	17286	0.65%	1.32%	1.85%	2.69%
NIFTY FINANCIAL SERVICES	26849	1.75%	2.22%	2.26%	1.32%
➔ NIFTY PRIVATE BANK	27833	1.79%	1.69%	1.78%	0.93%
NIFTY PSU BANK	7100	0.58%	-0.01%	0.23%	1.78%
NIFTY IT	37295	0.50%	0.97%	1.30%	-0.07%
NIFTY FMCG	55803	0.31%	0.49%	0.62%	0.94%
NIFTY OIL & GAS	11447	0.57%	0.83%	1.51%	0.51%
NIFTY PHARMA	21684	0.19%	1.46%	1.55%	1.13%
➔ NIFTY AUTO	23661	1.52%	1.41%	1.69%	1.44%
NIFTY METAL	9406	1.90%	2.50%	3.11%	2.32%
➔ NIFTY REALTY	1040	4.68%	6.52%	5.77%	9.51%
NIFTY INDIA DEFENCE	8919	-1.70%	0.57%	1.43%	2.69%
NIFTY CPSE	6550	0.61%	1.52%	2.26%	1.54%

Investment in securities market are subject to market risks, read all the related documents carefully before investing.

# Technical Trading Idea

9-Jun-25

## HUDCO

(Mcap 49,313 Cr.)

F&O Stock, MTF Stock

- Retesting its breakout from a falling supply trendline.
- Respecting 20 DEMA support zones.
- Higher than average traded volumes.
- RSI momentum indicator rising.
- We recommend to buy the stock at CMP ₹246 with a SL of ₹233 and a TGT of ₹267.

RECOs	CMP	SL	TARGET	DURATION
Buy	246	233	267	Weekly



Investment in securities market are subject to market risks, read all the related documents carefully before investing.

# Stocks On Radar

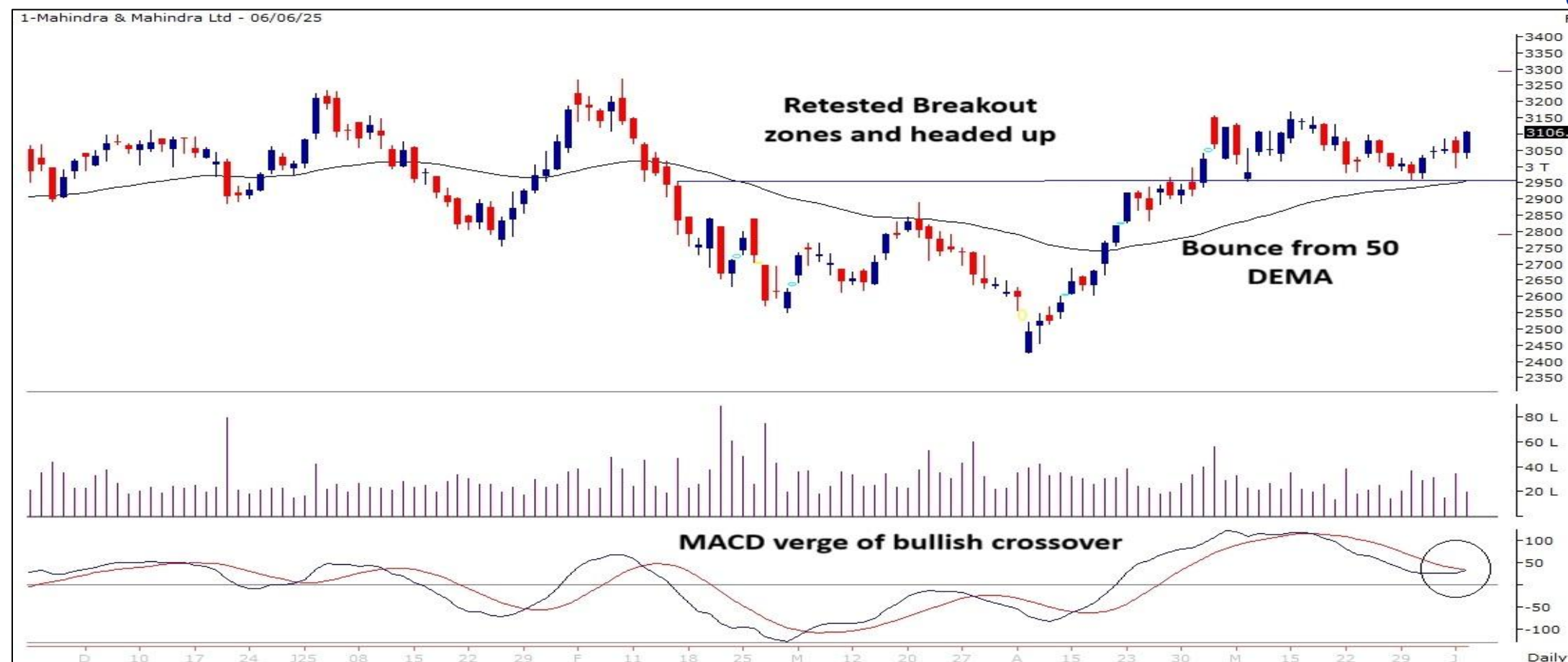
9-Jun-25

## M&M

(CMP: 3106, Mcap 3,86,302 Cr.)

### F&O Stock, MTF Stock

- Retesting breakout zones and headed up.
- Bounce from 50 DEMA.
- Higher than average traded volumes.
- MACD verge of bullish crossover.
- Immediate support at 2962.



## MINDACORP

(CMP: 560, Mcap 13,390 Cr.)

### MTF Stock

- Falling supply trendline breakout.
- Strong bodied bullish candle.
- Rising volumes.
- MACD momentum indicator headed up.
- Immediate support at 525.



Investment in securities market are subject to market risks, read all the related documents carefully before investing.

# Derivative Outlook



# Derivative Outlook



- Nifty June future closed at 25,096.30 with a premium of 93.25 point v/s 110.50 point premium in the last session.
- Nifty Put/Call Ratio (OI) increased from 0.98 to 1.05 level.
- India VIX decreased by 3.00% to 14.63 level.

# FII Cash & Derivative Activity



9-Jun-25

- FII on Derivatives front : Short covering along with long built up in index futures, call and put buying in index options.
- In the cash market : FIIs were net buyers to the tune of 1010 Cr while DIIs were also net buyers worth 9342 Cr.
- FIIs long short ratio : Increased to 20.87%

## INSTITUTIONAL DERIVATIVES ACTIVITY

Change in OI in Future Index Long (in contracts)					Change in OI in Future Index Short (in contracts)					Change in OI in Future Stock Long (in contracts)					Change in OI in Future Stock Short (in contracts)				
Date	Client	DII	FII	Pro	Date	Client	DII	FII	Pro	Date	Client	DII	FII	Pro	Date	Client	DII	FII	Pro
02-Jun-25	996	0	505	-1493	02-Jun-25	810	-5372	5887	-1317	02-Jun-25	24346	9076	-9179	8508	02-Jun-25	10598	32845	-15199	4507
03-Jun-25	8976	2967	-877	3144	03-Jun-25	1563	-1840	13211	1276	03-Jun-25	59210	1391	-12278	31344	03-Jun-25	-1665	29446	31222	20664
04-Jun-25	3462	-394	1138	-449	04-Jun-25	4216	251	919	-1629	04-Jun-25	31245	976	6534	22131	04-Jun-25	14700	31547	14100	539
05-Jun-25	4465	-1576	-620	7150	05-Jun-25	4431	3925	3433	-2370	05-Jun-25	23662	2560	21368	9284	05-Jun-25	8335	8624	27707	12208
06-Jun-25	-946	1011	6924	1696	06-Jun-25	6199	735	-7334	9085	06-Jun-25	-25847	11664	30491	-7709	06-Jun-25	439	14331	-24606	18435

Change in OI in Option Index Call Long (in contracts)					Change in OI in Option Index Call Short (in contracts)					Change in OI in Option Index Put Long (in contracts)					Change in OI in Option Index Put Short (in contracts)				
Date	Client	DII	FII	Pro	Date	Client	DII	FII	Pro	Date	Client	DII	FII	Pro	Date	Client	DII	FII	Pro
02-Jun-25	107996	0	111445	235550	02-Jun-25	331144	0	39110	84737	02-Jun-25	204592	0	128278	197018	02-Jun-25	300603	0	35309	193978
03-Jun-25	875776	0	34964	268157	03-Jun-25	682783	0	109460	386655	03-Jun-25	122890	0	54536	-34025	03-Jun-25	34058	0	115594	-6252
04-Jun-25	-724	0	-29940	76639	04-Jun-25	35091	0	128	10754	04-Jun-25	262532	0	-21752	139278	04-Jun-25	194155	0	44096	141808
05-Jun-25	-1419044	0	-117406	-710819	05-Jun-25	-1548300	0	-139692	-559275	05-Jun-25	-677946	0	-118763	-339759	05-Jun-25	-676896	0	-150476	-309098
06-Jun-25	272249	0	104341	265605	06-Jun-25	421059	0	78195	142939	06-Jun-25	663187	300	47535	219977	06-Jun-25	595451	0	72266	263283

Today's OI Changes (in contracts)										Cumulative Positions (in contracts)									
Clients	Index Futures			Index Calls			Index Puts			Clients	Index Futures			Index Calls			Index Puts		
	Long	Short	Net	Long	Short	Net	Long	Short	Net		Long	Short	Net	Long	Short	Net	Long	Short	Net
	-946	6199	-7145	272249	421059	-148810	663187	595451	67736		188351	126827	61524	1772897	2095347	-322450	1966876	2138360	-171484
DII	1011	735	276	0	0	0	300	0	300	DII	79043	39677	39366	70	0	70	11201	0	11201
FII	6924	-7334	14258	104341	78195	26146	47535	72266	-24731	FII	33228	125958	-92730	539142	391131	148011	541230	398827	142403
Pro	1696	9085	-7389	265605	142939	122666	219977	263283	-43306	Pro	29566	37726	-8160	949234	774864	174370	886700	868820	17880

FII Derivatives Activity		Index Long Short Ratio	
Segment	Net Amount (in Cr)		
Index Futures	2456	Clients	59.76%
Index Options	-782	DII	66.58%
Stock Futures	3826	FII	20.87%
Stock Options	-1820	Pro	43.94%

Institutions Activity in Cash Segment - Net Value (in Cr)							
	06-Jun-25	05-Jun-25	04-Jun-25	03-Jun-25	02-Jun-25	30-May-25	29-May-25
FIIs	1009.71	-208.47	1076.18	-2853.83	-2589.47	-6449.74	884.03
DIIs	9342.48	2382.4	2566.82	5907.97	5313.76	9095.91	4286.5



Investments in securities markets are subject to market risks.  
Please read all related documents carefully.

Investment in securities market are subject to market risks, read all the related documents carefully before investing.

# Nifty : Option Data



9-Jun-25

- Maximum Call OI is at 25500 then 26000 strike while Maximum Put OI is at 25000 then 24800 strike.
- Call writing is seen at 25500 then 25600 strike while Put writing is seen at 25000 then 24900 strike.
- Option data suggests a broader trading range in between 24500 to 25500 zones while an immediate range between 24800 to 25200 levels.

Nifty 50 OI Chart(12 Jun 2025)



Investment in securities market are subject to market risks, read all the related documents carefully before investing.

# Option - Buying side strategy



9-Jun-25

Index	Single Leg Buying	Multi Leg Strategy
<b>Nifty</b> (Weekly)	25200 CE till it holds above 25000	Bull Call Spread (Buy 25150 CE and Sell 25350 CE) at net premium cost of 50-60 points
<b>Sensex</b> (Weekly)	82500 CE till it holds above 82000	Bull Call Spread (Buy 82200 CE and Sell 82400 CE) at net premium cost of 80-90 points
<b>Bank Nifty</b> (Monthly)	58000 CE till it holds above 56250	Bull Call Spread (Buy 57000 CE and Sell 57500 CE) at net premium cost of 220-230 points




# Option - Selling side strategy



9-Jun-25

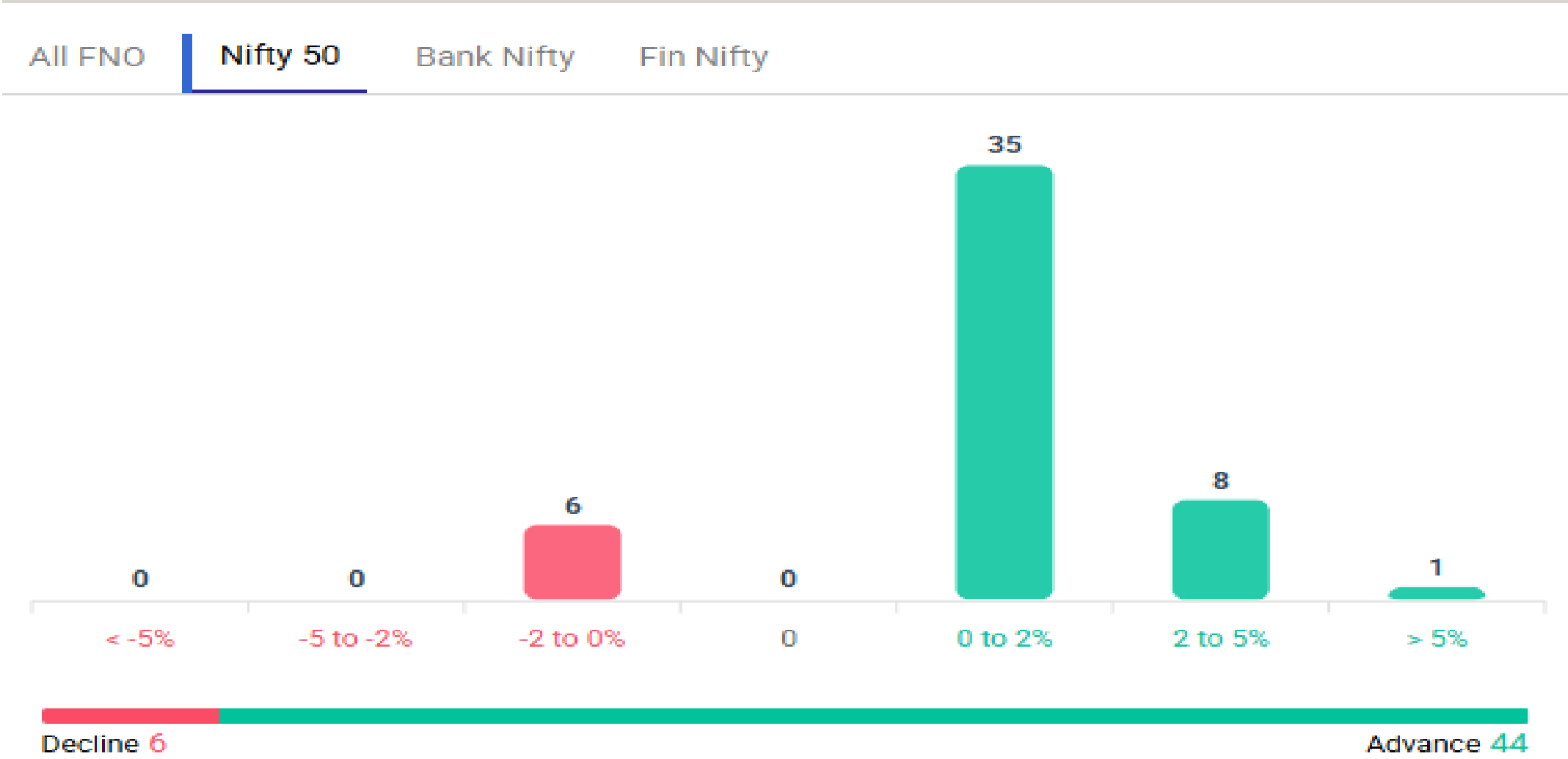
Index	Writing
<b>Nifty</b> (Weekly)	24100 PE & 25700 CE
<b>Sensex</b> (Weekly)	79200 PE & 84200 CE
<b>Bank Nifty</b> (Monthly)	54000 PE & 59500 CE

Weekly Option Range for Option Writers based on Different Confidence Band								
Date		9-Jun-25	Weekly Expiry		12-Jun-25	Days to weekly expiry		4
								
Nifty		25003	India VIX		14.6			
Confidence Band	Probability	% Away From Spot	Range				Total Premium (Put + Call)	Types of Trades
			Put	Premium	Call	Premium		
1.00	68%	± 1.4%	24650	52	25350	47	100	Aggressive
1.25	79%	± 1.6%	24600	44	25400	38	82	Less Aggressive
1.50	87%	± 2.0%	24500	32	25500	24	56	Neutral
1.75	92%	± 2.4%	24400	24	25600	15	38	Conservative
2.00	95%	± 2.6%	24350	20	25650	11	31	Most Conservative
Date		9-Jun-25	Monthly Expiry		26-Jun-25	Days to expiry		12
Bank Nifty		56578						
Confidence Band	Probability	% Away From Spot	Range				Total Premium (Put + Call)	Types of Trades
			Put	Premium	Call	Premium		
1.00	68%	± 2.4%	55200	280	58000	333	613	Aggressive
1.25	79%	± 3.0%	54900	227	58300	259	486	Less Aggressive
1.50	87%	± 3.7%	54500	174	58700	179	353	Neutral
1.75	92%	± 4.2%	54200	143	59000	141	284	Conservative
2.00	95%	± 4.9%	53800	109	59400	98	207	Most Conservative
Investments in securities markets are subject to market risks. Please read all related documents carefully.								

# Nifty Advance Decline & Ban update

Stocks in Ban: MANAPPURAM, ABFRL, CHAMBLFERT, HINDCOPPER

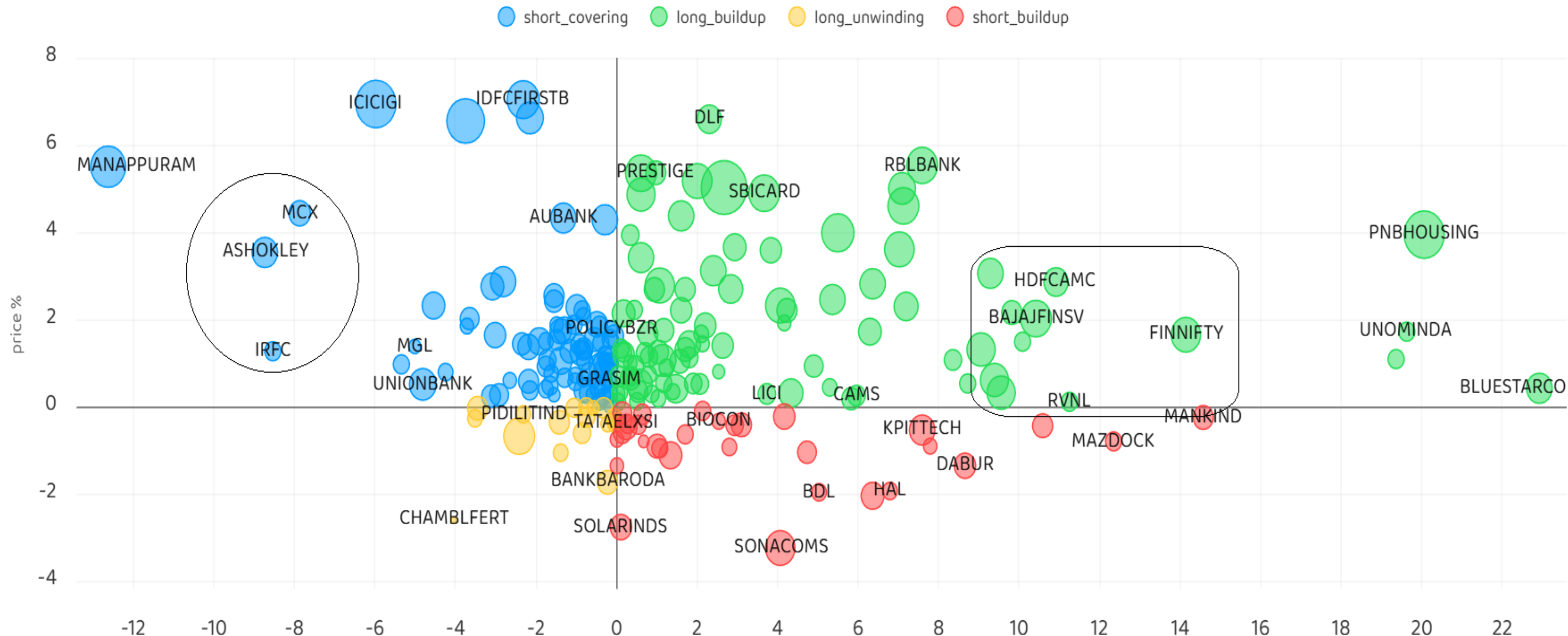
## Advance & Decline



# Stocks : Derivatives Outlook



9-Jun-25





# Stocks : Options on radar



9-Jun-25

Stock	Call Strike	Trade	Buying Range	SL	TGT	Logic
BAJFINANCE	9400 CE	Buy	199-200	180	240	Long Built up
CIPLA	1500 CE	Buy	32-33	24	49	Short Covering
M&M	3100 CE	Buy	75-76	68	90	Long Built up

Stock	Put Strike	Trade	Buying Range	SL	TGT	Logic
DIVISLAB	3550 PE	Buy	130-131	105	180	Short Built up
HDFCLIFE	750 PE	Buy	13-14	10	20	Short Built up

# Quant Outlook

# Quant Intraday Sell Ideas



## What is this?

Based on technical indicators this strategy gives 2 stocks that have a high likelihood to fall during the day (from open to close). This is an intraday Sell strategy which can provide a good cushioning during a black swan event.

## Today's **Sell** Ideas:

Stock Names	Close Price	SL (1%)	TP (1%)
HAL <b>(Sell)</b>	4989.3	5039.2	4939.4
IOC <b>(Sell)</b>	140.8	142.2	139.4

## What are the rules?

- Stock names will be given at market open (9:15 am)
- Recommended time to entry: between 9:15 to 9:30 am.
- Entry: We short 2 stocks daily (intraday)
- Exit: we will exit at 3:15 as this is an intraday call
- SL: is placed at 1% of the open.
- Book profit: At 1% fall since open.
- In special situations the book profit might be delayed if the stock is in free fall.

Siddhartha Khemka  
Head – Retail Research

Chandan Taparua, CMT, CFTe  
Head- Derivatives & Technical Analyst

Neil Jha  
Head- Quant

Disclosures:

The following Disclosures are being made in compliance with the SEBI Research Analyst Regulations 2014 (herein after referred to as the Regulations).

Motilal Oswal Financial Services Ltd. (MOFSL) is a SEBI Registered Research Analyst having registration no. INH000000412. MOFSL, the Research Entity (RE) as defined in the Regulations, is engaged in the business of providing Stock broking services, Depository participant services & distribution of various financial products. MOFSL is a listed public company, the details in respect of which are available on [www.motilaloswal.com](http://www.motilaloswal.com). MOFSL is registered with the Securities & Exchange Board of India (SEBI) and is a registered Trading Member with National Stock Exchange of India Ltd. (NSE) and Bombay Stock Exchange Limited (BSE), Multi Commodity Exchange of India Limited (MCX) and National Commodity & Derivatives Exchange Limited (NCDEX) for its stock broking activities & is Depository participant with Central Depository Services Limited (CDSL) National Securities Depository Limited (NSDL),NERL, COMRIS and CCRL and is member of Association of Mutual Funds of India (AMFI) for distribution of financial products and Insurance Regulatory & Development Authority of India (IRDA) as Corporate Agent for insurance products. Details of associate entities of Motilal Oswal Financial Services Ltd. are available on the website at <http://onlinereports.motilaloswal.com/Dormant/documents/Associate%20Details.pdf>

Details of pending Enquiry Proceedings of Motilal Oswal Financial Services Limited are available on the website at <https://galaxy.motilaloswal.com/ResearchAnalyst/PublishViewLitigation.aspx>

MOFSL, its associates, Research Analyst or their relatives may have any financial interest in the subject company. MOFSL and/or its associates and/or Research Analyst or their relatives may have actual beneficial ownership of 1% or more securities in the subject company at the end of the month immediately preceding the date of publication of the Research Report or date of the public appearance. MOFSL and its associate company(ies), their directors and Research Analyst and their relatives may have any other potential conflict of interests at the time of publication of the research report or at the time of public appearance, however the same shall have no bearing whatsoever on the specific recommendations made by the analyst(s), as the recommendations made by the analyst(s) are completely independent of the views of the associates of MOFSL even though there might exist an inherent conflict of interest in some of the stocks mentioned in the research report..

In the past 12 months, MOFSL or any of its associates may have:

- a. Received any compensation/other benefits from the subject company of this report
- b. Managed or co managed public offering of securities from subject company of this research report,
- c. Received compensation for investment banking or merchant banking or brokerage services from subject company of this research report,
- d. Received compensation for products or services other than investment banking or merchant banking or brokerage services from the subject company of this research report.
- MOFSL and its associates have not received any compensation or other benefits from the subject company or third party in connection with the research report.
- Subject Company may have been a client of MOFSL or its associates during twelve months preceding the date of distribution of the research report.
- Research Analyst may have served as director/officer/employee in the subject company.
- MOFSL and research analyst may engage in market making activity for the subject company.

MOFSL and its associate company(ies), and Research Analyst and their relatives from time to time may

a) a long or short position in, act as principal in, and buy or sell the securities or derivatives thereof of companies mentioned herein.

(b) be engaged in any other transaction involving such securities and earn brokerage or other compensation or act as a market

maker in the financial instruments of the company(ies) discussed herein or act as an advisor or lender/borrower to such ies) or may have any other potential conflict of interests with respect to any recommendation and other related information and opinions.; however the same shall have no bearing whatsoever on the specific recommendations made by the analyst(s), as the recommendations made by the analyst (are completely independent of the views of the associates of MOFSL even though there might exist an inherent conflict of interest in some of the stocks mentioned in the research report.

Above disclosures include beneficial holdings lying in demat account of MOFSL which are opened for proprietary investments only. While calculating beneficial holdings, It does not consider demat accounts which are opened in name of MOFSL for other purposes ( i.e holding client securities, collaterals, error trades etc.). MOFSL also earns DP income from clients which are not considered in above disclosures.

To enhance transparency, MOFSL has incorporated a Disclosure of Interest Statement in this document. This should, however, not be treated as endorsement of the views expressed in the report. MOFSL and / or its affiliates do and seek to do business including investment banking with companies covered in its research reports. As a result, the recipients of this report should be aware that MOFSL may have a potential conflict of interest that may affect the objectivity of this report.

Terms & Conditions:

This report has been prepared by MOFSL and is meant for sole use by the recipient and not for circulation. The report and information contained herein is strictly confidential and may not be altered in any way, transmitted to, copied or distributed, in part or in whole, to any other person or to the media or reproduced in any form, without prior written consent of MOFSL. The report is based on the facts, figures and information that are considered true, correct, reliable and accurate. The intent of this report is not recommendatory in nature. The information is obtained from publicly available media or other sources believed to be reliable. Such information has not been independently verified and no guaranty, representation of warranty, express or implied, is made as to its accuracy, completeness or correctness. All such information and opinions are subject to change without notice. The report is prepared solely for informational purpose and does not constitute an offer document or solicitation of offer to buy or sell or subscribe for securities or other financial instruments for the clients. Though disseminated to all the customers simultaneously, not all customers may receive this report at the same time. MOFSL will not treat recipients as customers by virtue of their receiving this report.

Analyst Certification

The views expressed in this research report accurately reflect the personal views of the analyst(s) about the subject securities or issues, and no part of the compensation of the research analyst(s) was, is, or will be directly or indirectly related to the specific recommendations and views

expressed by research analyst(s) in this report. Disclosure of Interest Statement

Analyst ownership of the stock No

A graph of daily closing prices of securities is available at [www.nseindia.com](http://www.nseindia.com), [www.bseindia.com](http://www.bseindia.com). Research Analyst views on Subject Company may vary based on Fundamental research and Technical Research. Proprietary trading desk of MOFSL or its associates maintains arm’s length distance with Research Team as all the activities are segregated from MOFSL research activity and therefore it can have an independent view with regards to subject company for which Research Team have expressed their views.

Regional Disclosures (outside India)

This report is not directed or intended for distribution to or use by any person or entity resident in a state, country or any jurisdiction, where such distribution, publication, availability or use would be contrary to law, regulation or which would subject MOFSL & its group companies to registration or licensing requirements within such jurisdictions. For Hong Kong:

This report is distributed in Hong Kong by Motilal Oswal capital Markets (Hong Kong) Private Limited, a licensed corporation (CE AYY 301) licensed and regulated by the Hong Kong Securities and Futures Commission (SFC) pursuant to the Securities and Futures Ordinance (Chapter 571 of the Laws of Hong Kong) “SFO”. As per SEBI (Research Analyst Regulations) 2014 Motilal Oswal Financial Services Limited (SEBI Reg No. INH000000412) has an agreement with Motilal Oswal capital Markets (Hong Kong) Private Limited for distribution of research report in Hong Kong. This report is intended for distribution only to “Professional Investors” as defined in Part I of Schedule 1 to SFO. Any investment or investment activity to which this document relates is only available to professional investor and will be engaged only with professional investors.” Nothing here is an offer or solicitation of these securities, products and services in any jurisdiction where the offer or sale is not qualified or exempt from registration. The Indian Analyst(s) who compile this report is/are not located in Hong Kong & are not conducting Research Analysis in Hong Kong.

Investment in securities market are subject to market risks, read all the related documents carefully before investing.

For U.S.

MOTILAL Oswal Financial Services Limited (MOFSL) is not a registered broker - dealer under the U.S. Securities Exchange Act of 1934, as amended (the"1934 act") and under applicable state laws in the United States. In addition MOFSL is not a registered investment adviser under the U.S. Investment Advisers Act of 1940, as amended (the "Advisers Act" and together with the 1934 Act, the "Acts), and under applicable state laws in the United States. Accordingly, in the absence of specific exemption under the Acts, any brokerage and investment services provided by MOFSL, including the products and services described herein are not available to or intended for U.S. persons. This report is intended for distribution only to "Major Institutional Investors" as defined by Rule 15a-6(b)(4) of the Exchange Act and interpretations thereof by SEC (henceforth referred to as "major institutional investors"). This document must not be acted on or relied on by persons who are not major institutional investors. Any investment or investment activity to which this document relates is only available to major institutional investors and will be engaged in only with major institutional investors. In reliance on the exemption from registration provided by Rule 15a-6 of the U.S. Securities Exchange Act of 1934, as amended (the "Exchange Act") and interpretations thereof by the U.S. Securities and Exchange Commission ("SEC") in order to conduct business with Institutional Investors based in the U.S., MOFSL has entered into a chaperoning agreement with a U.S. registered broker-dealer, Motilal Oswal Securities International Private Limited. ("MOSIPL"). Any business interaction pursuant to this report will have to be executed within the provisions of this chaperoning agreement.

The Research Analysts contributing to the report may not be registered /qualified as research analyst with FINRA. Such research analyst may not be associated persons of the U.S. registered broker-dealer, MOSIPL, and therefore, may not be subject to NASD rule 2711 and NYSE Rule 472 restrictions on communication with a subject company, public appearances and trading securities held by a research analyst account.

For Singapore

In Singapore, this report is being distributed by Motilal Oswal Capital Markets Singapore Pte Ltd (“MOCMSPL”) (Co.Reg. NO. 201129401Z) which is a holder of a capital markets services license and an exempt financial adviser in Singapore, as per the approved agreement under Paragraph 9 of Third Schedule of Securities and Futures Act (CAP 289) and Paragraph 11 of First Schedule of Financial Advisors Act (CAP 110) provided to MOCMSPL by Monetary Authority of Singapore. Persons in Singapore should contact MOCMSPL in respect of any matter arising from, or in connection with this report/publication/communication. This report is distributed solely to persons who qualify as “Institutional Investors”, of which some of whom may consist of "accredited" institutional investors as defined in section 4A(1) of the Securities and Futures Act, Chapter 289 of Singapore (“the SFA”).

Accordingly, if a Singapore person is not or ceases to be such an institutional investor, such Singapore Person must immediately discontinue any use of this Report and inform MOCMSPL.

Disclaimer:

This report is intended for distribution to Retail Investors.

The report and information contained herein is strictly confidential and meant solely for the selected recipient and may not be altered in any way, transmitted to, copied or distributed, in part or in whole, to any other person or to the media or reproduced in any form, without prior written consent. This report and information herein is solely for informational purpose and may not be used or considered as an offer document or solicitation of offer to buy or sell or subscribe for securities or other financial instruments. Nothing in this report constitutes investment, legal, accounting and tax advice or a representation that any investment or strategy is suitable or appropriate to your specific circumstances. The securities discussed and opinions expressed in this report may not be suitable for all investors, who must make their own investment decisions, based on their own investment objectives, financial positions and needs of specific recipient. This may not be taken in substitution for the exercise of independent judgment by any recipient. Each recipient of this document should make such investigations as it deems necessary to arrive at an independent evaluation of an investment in the securities of companies referred to in this document (including the merits and risks involved), and should consult its own advisors to determine the merits and risks of such an investment. The investment discussed or views expressed may not be suitable for all investors. Certain transactions -including those involving futures, options, another derivative products as well as non-investment grade securities - involve substantial risk and are not suitable for all investors. No representation or warranty, express or implied, is made as to the accuracy, completeness or fairness of the information and opinions contained in this document. The Disclosures of Interest Statement incorporated in this document is provided solely to enhance the transparency and should not be treated as endorsement of the views expressed in the report. This information is subject to change without any prior notice. The Company reserves the right to make modifications and alternations to this statement as may be required from time to time without any prior approval. MOFSL, its associates, their directors and the employees may from time to time, effect or have effected an own account transaction in, or deal as principal or agent in or for the securities mentioned in this document. They may perform or seek to perform investment banking or other services for, or solicit investment banking or other business from, any company referred to in this report. Each of these entities functions as a separate, distinct and independent of each other. The recipient should take this into account before interpreting the document. This report has been prepared on the basis of information that is already available in publicly accessible media or developed through analysis of MOFSL. The views expressed are those of the analyst, and the Company may or may not subscribe to all the views expressed therein. This document is being supplied to you solely for your information and may not be reproduced, redistributed or passed on, directly or indirectly, to any other person or published, copied, in whole or in part, for any purpose. This report is not directed or intended for distribution to, or use by, any person or entity who is a citizen or resident of or located in any locality, state, country or other jurisdiction, where such distribution, publication, availability or use would be contrary to law, regulation or which would subject MOFSL to any registration or licensing requirement within such jurisdiction. The securities described herein may or may not be eligible for sale in all jurisdictions or to certain category of investors. Persons in whose possession this document may come are required to inform themselves of and to observe such restriction. Neither the Firm, not its directors, employees, agents or representatives shall be liable for any damages whether direct or indirect, incidental, special or consequential including lost revenue or lost profits that may arise from or in connection with the use of the information. The person accessing this information specifically agrees to exempt MOFSL or any of its affiliates or employees from, any and all responsibility/liability arising from such misuse and agrees not to hold MOFSL or any of its affiliates or employees responsible for any such misuse and further agrees to hold MOFSL or any of its affiliates or employees free and harmless from all losses, costs, damages, expenses that may be suffered by the person accessing this information due to any errors and delays.

This report is meant for the clients of Motilal Oswal only.

Investment in securities market are subject to market risks. Read all the related documents carefully before investing.

Registration granted by SEBI and certification from NISM in no way guarantee performance of the intermediary or provide any assurance of returns to investors.

Registered Office Address: Motilal Oswal Tower, Rahimtullah Sayani Road, Opposite Parel ST Depot, Prabhadevi, Mumbai-400025; Tel No.: 022 - 71934200 / 71934263; www.motilaloswal.com. Correspondence Address: Palm Spring Centre, 2nd Floor, Palm Court Complex, New Link Road, Malad (West), Mumbai- 400 064. Tel No: 022 71881000. Details of Compliance Officer: Neeraj Agarwal, Email Id: na@motilaloswal.com, Contact No.:022-40548085.

Grievance Redressal Cell:

Contact Person	Contact No.	Email ID
Ms. Hemangi Date	022 40548000 / 022 67490600	query@motilaloswal.com
Ms. Kumud Upadhyay	022 40548082	servicehead@motilaloswal.com
Mr. Ajay Menon	022 40548083	am@motilaloswal.com

Registration details of group entities.: Motilal Oswal Financial Services Ltd. (MOFSL): INZ000158836 (BSE/NSE/MCX/NCDEX); CDSL and NSDL: IN-DP-16-2015; Research Analyst: INH000000412 . AMFI: ARN .: 146822. IRDA Corporate Agent – CA0579. Motilal Oswal Financial Services Ltd. is a distributor of Mutual Funds, PMS, Fixed Deposit, Insurance, Bond, NCDs and IPO products.

Customer having any query/feedback/ clarification may write to query@motilaloswal.com. In case of grievances for any of the services rendered by Motilal Oswal Financial Services Limited (MOFSL) write to grievances@motilaloswal.com, for DP to dpgrievances@motilaloswal.com.