



Solid Research
Solid Relationships

Fundamental Outlook

Market Setup

- U.S. stocks surged on Tuesday with S&P 500 & Nasdaq settling at **all time highs** as US Iran ceasefire held firm
- **Dow Futures** is currently trading with gains of **0.2%**
- **Asian markets** are trading higher with the gains of **~0.5-1%**.
- The Nifty 50 closed at **24,033 (-0.4%)**, while broader markets remained relatively resilient, with the Midcap100 and Smallcap100 indices **gaining 0.2% and 0.3%**, respectively.
- **Gift nifty** is currently trading **194 pots higher +0.7%**
- **FII**s: **-3622 Cr** ; **DII**s: **+2603 Cr**

Opening Cues: **Positive**

Stocks in News

Larsen & Toubro secures ₹2,500–5,000 Cr EPC order for coal-to-ammonium nitrate plant (2,000 TPD) in Odisha. Part of Coal India–BHEL JV; aligns with India's 100 MT coal gasification target by 2030. **Positive**

KEC International bags ₹1,002 Cr orders across T&D, renewables, transportation and cables segments. Order mix remains diversified across domestic and international markets. **Positive**

Lupin receives USFDA approval for Glycerol Phenylbutyrate oral liquid for rare UCD treatment. Targets ultra-rare patient pool (~1 in 35,000 births; ~20,000 patients across major markets) with high-value drug pricing. **Positive**

Quarterly Results performance:

Above Expectations: M&M, Coforge, Poonawala Fincorp, Ajanta Pharma

Inline: PNB, United Breweries, Marico

Mixed: L&T

Weak: Alkyl Amines

Fundamental Actionable Idea

Mahindra & Mahindra

CMP 3211 TP INR 3963; Upside 23% BUY, MTF Stock

- Mahindra & Mahindra's (MM) 4QFY26 PAT at INR37b was 15% ahead of our estimates, led by higher-than-expected other income, even as operational performance across the auto and farm segments was in line.
- MM's 4Q standalone revenue grew 26% YoY to INR395b (in line), driven primarily by a strong 24% volume growth and a blended ASP growth of 1.6%.
- During this quarter, it has added six ICE SUV launches and three BEV launches to its earlier planned launch pipeline till 2031. As a result, MM now plans to launch 10 ICE SUV products between April 2026 and 2031
- On the back of its healthy launch pipeline and positive consumer sentiment, management has provided a strong outlook for FY27E across segments: tractor industry at mid-single digit, MM UV at mid to high teens, and LCV industry at high single digit.
- We estimate MM to post a CAGR of ~15%/12%/13% in revenue/EBITDA/PAT over FY26-28.

View: BUY

Fundamental Actionable Idea

ICICI Lombard

CMP: INR1,777 TP: INR2,230; Upside (+25%); Buy, MTF Stock

- ICICI Lombard (ICICIGI) is witnessing a sharp recovery in growth momentum, with 2HFY26 GWP growth of ~16% (vs industry ~11%), driven by a revival in motor, strong traction in health post GST changes, and steady commercial lines. The company is well-positioned to sustain midteen growth with strengthening demand across segments.
- Fresh business growth in retail health and continued momentum in group health are likely to drive ~20% CAGR in the health segment over FY26-28, along with an improvement in profitability.
- ICICIGI maintains leadership across commercial segments, supported by a strong underwriting track record in claim-heavy businesses. With rate hardening, rising infrastructure capex, and increasing risk awareness, commercial lines are poised for steady growth, with improving profitability providing a stable and scalable earnings pillar.
- We expect ICICIGI's GWP/PAT to expand at an FY26-28 CAGR of 13%/19% as CoR reduces to 101.8% by FY28.

View: Buy

Result Estimate – 5th May, 2026

Q4FY26	Revenue	Growth (%)		EBIDTA (₹)	Growth (%)		PAT (₹)	Growth (%)	
Company	06-May	YoY	QoQ	06-May	YoY	QoQ	06-May	YoY	QoQ
Bajaj Auto	1,585	31%	4%	330	35%	4%	267	30%	5%
Shree Cement	544	4%	23%	122	-14%	33%	52	-11%	60%
Godrej	399	11%	-3%	87	15%	-1%	58	35%	4%
Radico Khaitan	158	21%	2%	27	52%	1%	16	76%	-3%
Blue Star	438	9%	50%	30	7%	35%	17	-13%	32%
Hexaware Tech.	353	10%	1%	53	0%	-4%	31	-4%	-9%
Polycab India	8,419	21%	10%	1,072	5%	9%	691	-5%	6%
Avalon Tech	446	30%	7%	54	30%	11%	37	51%	11%
PB Fintech	1,861	23%	5%	229	53%	15%	212	23%	12%
KPIT	1,660	9%	3%	349	8%	5%	216	-12%	62%
One 97 Comm.	2,184	14%	0%	43	LP	-72%	97	LP	-57%

Velocity Idea

CG Power

RECO: BUY; CMP: ₹816; SL: ₹750(8%); TGT: ₹945(16%)

- India-South Korea semiconductor deal adds a strategic tailwind for CG power. South Korea's strength in advanced chip manufacturing complements India's design talent & domestic production ambitions, creating a long-term opportunity for local semiconductor players.
- The company continues to aggressively expand transformer & switchgear capacities to capitalize on rising demand from India's transmission and distribution capex cycle.
- Recovery in industrial motors demand, the ramp-up of the semiconductor OSAT facility in Sanand from FY27, and ongoing capacity additions are expected to create diversified growth engines. Backed by a healthy order book and solid operating cash flows, the company is well-placed for strong revenue and profit growth.
- Stock has given a multi-month breakout and it is sustaining above its 20 DEMA level.
- Rising volumes with higher prices & MACD indicator trending upwards confirms the positive sentiment.

Investment Theme - Basketonomix

Nuclear Energy Opportunity Basket

- India’s landmark atomic energy bill enabling private and foreign participation, combined with its ambitious plan to scale nuclear energy capacity from ~8.8GW to 100GW by 2047 (~10x growth), unlocks a massive, multi-decade structural investment opportunity across the nuclear energy value chain.
- This expansion is expected to unlock a multi-decade investment cycle across reactors, components, EPC, turbines, generators , with potential order inflows driven by strong government commitment and long gestation project pipeline.
- Strong policy push towards clean energy transition and decarbonization is accelerating focus on nuclear energy power, positioning it as a key pillar alongside renewables to meet India’s rising power demand sustainably.

Time Frame: 12 Months

Upside: 20%

Script	CMP (23-Apr-2026)	WIGHTAGE %
L&T	4054	20
NTPC	402	20
Tata Power	430	20
BHEL	338	20
MTAR Tech	5384	20

Investment in securities market are subject to market risks, read all the related documents carefully before investing.

Focus Investment Ideas

All Stocks Available in MTF

Duration : 1 Year Horizon

Stock Name	Rating	CMP (Rs)	Target (Rs)	Upside (%)
Bharat Dynamics	Buy	1,399	1800	29%
TVS Motors	Buy	3,535	4461	26%
Delhivery	Buy	461	580	26%
State Bank of India	Buy	1060	1300	23%
NAM India	Buy	1052	1200	14%

Technical Outlook

Nifty Technical Outlook

NIFTY (CMP : 24032) Nifty immediate support is at 23900 then 23800 zone while resistance at 24150 then 24300 zones. Now it has to hold above 24000 zones for an up move towards 24150 then 24300 zones while supports are placed at 23900 then 23800 zones.

1-Nifty50 - 05/05/26



Bank Nifty Technical Outlook

BANK NIFTY (CMP : 54547) Bank Nifty support is at 54250 then 54000 zones while resistance at 55500 then 55250 zones. Now it has to cross and hold above 54750 zones for a bounce towards 55000 then 55250 levels while a hold below the same could see some weakness towards 54250 then 54000 zones.

1-Niftybank - 05/05/26



Sensex Technical Outlook

Sensex (CMP : 77017) Sensex support is at 76900 then 76700 zones while resistance at 77000 then 77900 zones. Now it has to hold above 77000 for an up move towards 77500 then 77700 zones while support can be seen at 76700 then 76500 zones.

4-S&P BSESENSX - 05/05/26
EMA(CloseLine:50)



Investment in securities market are subject to market risks, read all the related documents carefully before investing.

Midcap100 Index Technical Outlook

- The Index is trading within a narrow range and is on the verge of a breakout.
- The market breadth was in favour of the advances.

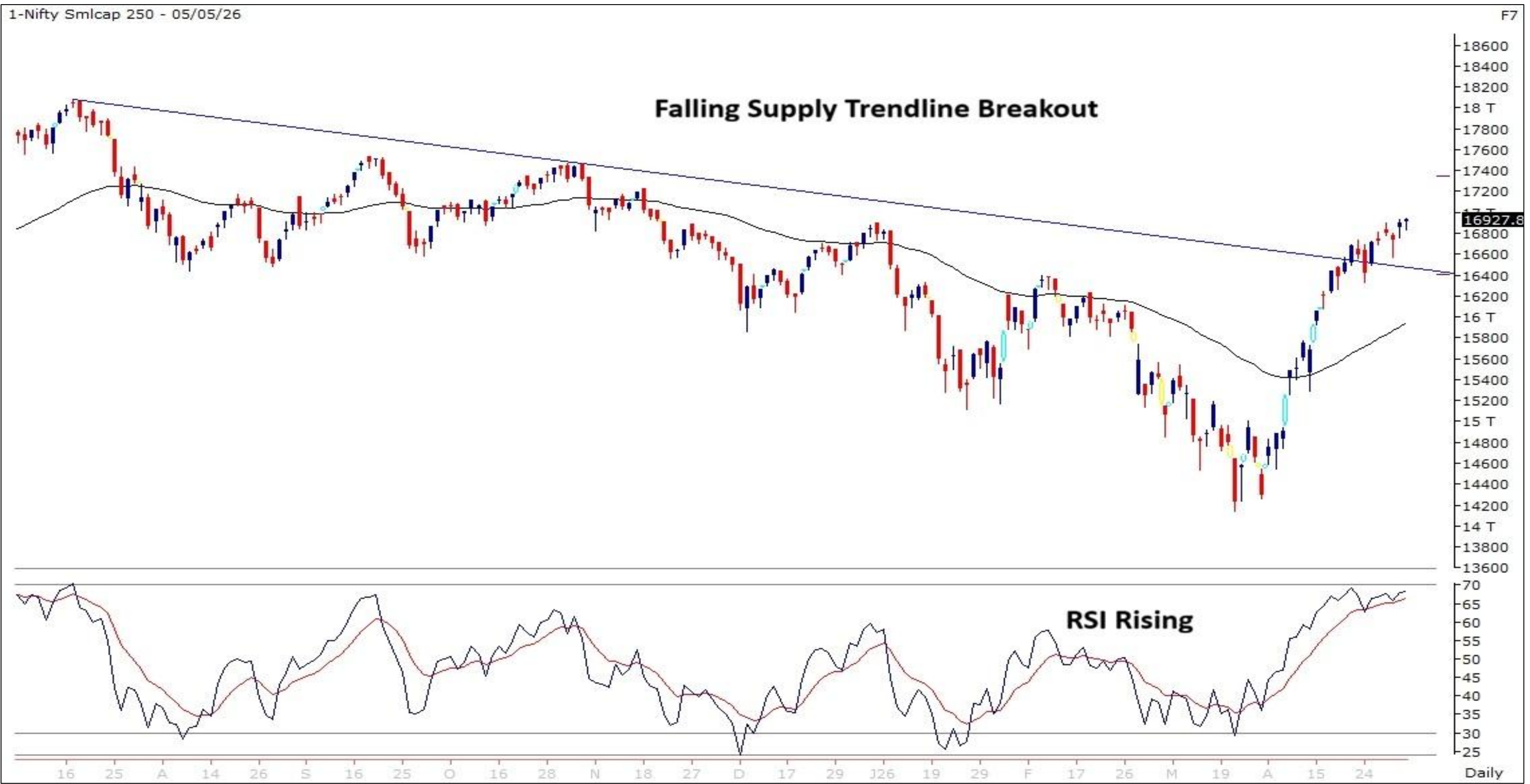


Nifty Midcap100 Stats	
Advance	Decline
55	45

Investment in securities market are subject to market risks, read all the related documents carefully before investing.

Smallcap250 Index Technical Outlook

- The Index has broken out from a falling supply trendline with the RSI indicator rising.
- The market breadth was marginally in favour of the declines.



Nifty SmallCap250 Stats	
Advance	Decline
117	133

Investment in securities market are subject to market risks, read all the related documents carefully before investing.

Brent Crude Oil Spot Rate

- Brent Crude Oil Spot Rate plunged to 108 US Dollar Per barrel.



6-May-26

Investment in securities market are subject to market risks, read all the related documents carefully before investing.

Sectoral Performance - Daily

- Among the daily sectoral indices change relative strength was seen in Nifty India Defence and Nifty Pharma.

Indices	Closing 05-Apr	% Change			
		1-day	2-days	3-days	5-days
NIFTY 50	24033	-0.36%	0.15%	-0.60%	-0.25%
NIFTY BANK	54547	-0.60%	-0.58%	-1.55%	-3.05%
NIFTY MIDCAP 100	60265	0.17%	0.80%	-0.19%	0.03%
NIFTY SMALLCAP 250	16928	0.19%	1.18%	0.74%	1.28%
NIFTY FINANCIAL SERVICES	25717	-0.38%	0.23%	-0.76%	-1.71%
NIFTY PRIVATE BANK	26071	-0.67%	-0.80%	-1.67%	-2.46%
NIFTY PSU BANK	8439	-0.20%	-0.51%	-2.18%	-4.68%
NIFTY IT	29107	0.11%	-0.84%	-0.47%	-0.18%
NIFTY FMCG	51594	0.64%	1.02%	-0.34%	1.07%
NIFTY OIL & GAS	11700	-0.28%	0.05%	-0.59%	1.67%
NIFTY PHARMA	23569	0.40%	1.29%	1.32%	1.71%
NIFTY AUTO	26192	0.63%	1.06%	0.41%	0.53%
NIFTY METAL	12990	0.13%	1.22%	-0.93%	0.07%
NIFTY REALTY	801	-1.41%	0.97%	-0.54%	0.51%
NIFTY INDIA DEFENCE	9093	1.28%	1.33%	0.90%	2.13%



Sectoral Performance - Weekly

- Among the weekly sectoral indices change relative strength was seen in Nifty Pharma while weakness as seen in Nifty PSU Bank.

Name	1W Change	2W Change	3W Change	4W Change	5W Change
Nifty 50	0.15	0.56	-1.32	-0.07	5.81
Nifty Bank	-0.58	-2.75	-3.57	-2.44	5.82
Nifty IT	-0.84	2.02	-8.5	-6.2	-4.38
Nifty Auto	1.06	2.1	-0.92	-1.68	8.73
Nifty Metal	1.22	1.91	0.85	5.12	13.38
Nifty Pharma	1.29	4.38	4.76	6.33	8.07
Nifty FMCG	1.02	1.63	3.9	7.05	11.6
Nifty Realty	0.97	2.99	1.82	5.53	19.22
Nifty Media	-0.46	0.74	2.31	6.16	11.2
Nifty PSU Bank	-0.51	-4.22	-4.78	-3.86	3.75



Investment in securities market are subject to market risks, read all the related documents carefully before investing.

Technical – Conviction Delivery Idea

GLENMARK (Mcap ₹ 68,265 Cr.)

F&O Stock, MTF stock

- Retesting breakout zones on daily chart.
- Strong bodied bullish candle.
- Respecting 50 DEMA.
- Rising volumes.
- RSI momentum indicator positively placed.
- We recommend to buy the stock at CMP ₹2418 with a SL of ₹2310 and a TGT of ₹2590.

RECOs	CMP	SL	TARGET	DURATION
BUY	2418	2310	2590	1 Week



Investment in securities market are subject to market risks, read all the related documents carefully before investing.

Technical Stocks On Radar

NAM INDIA

(CMP: 1053, Mcap ₹ 67,174 Cr.)

MTF stock

- Range breakout above 1065.
- Strong bodied bullish candle.
- High traded volumes.
- RSI indicator positively placed.
- Immediate support at 1015.



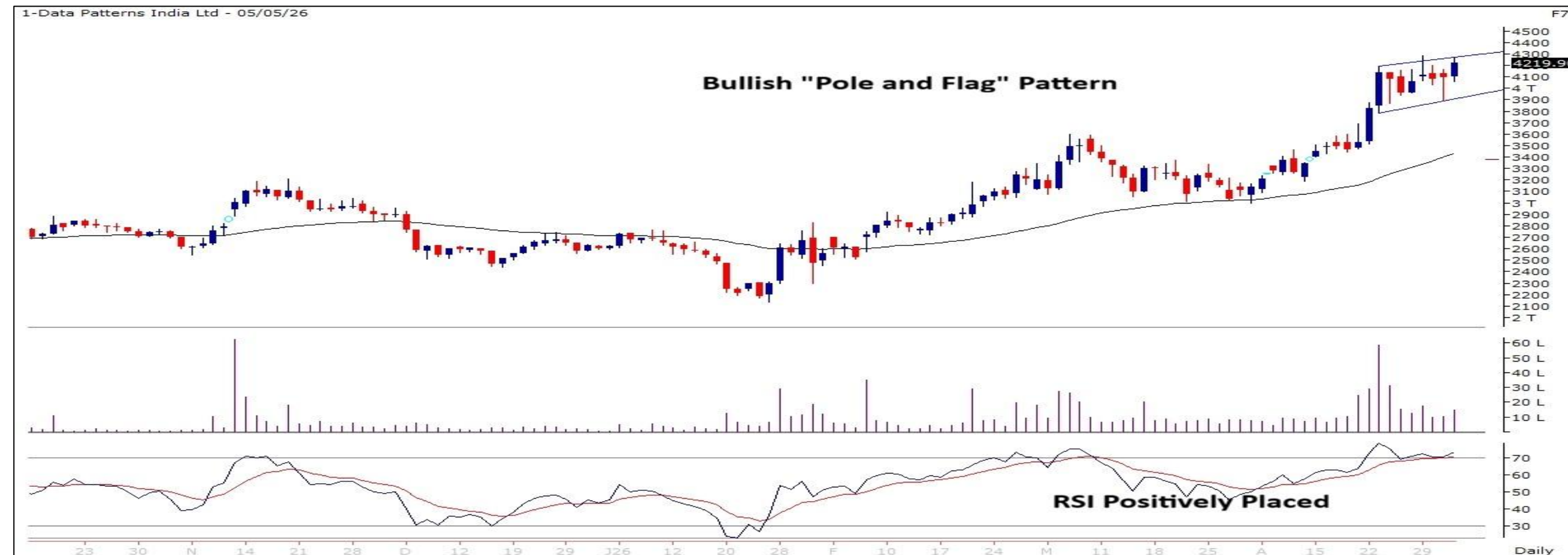
6-May-26

DATAPATTNS

(CMP: 4220, Mcap ₹ 23,613 Cr.)

MTF stock

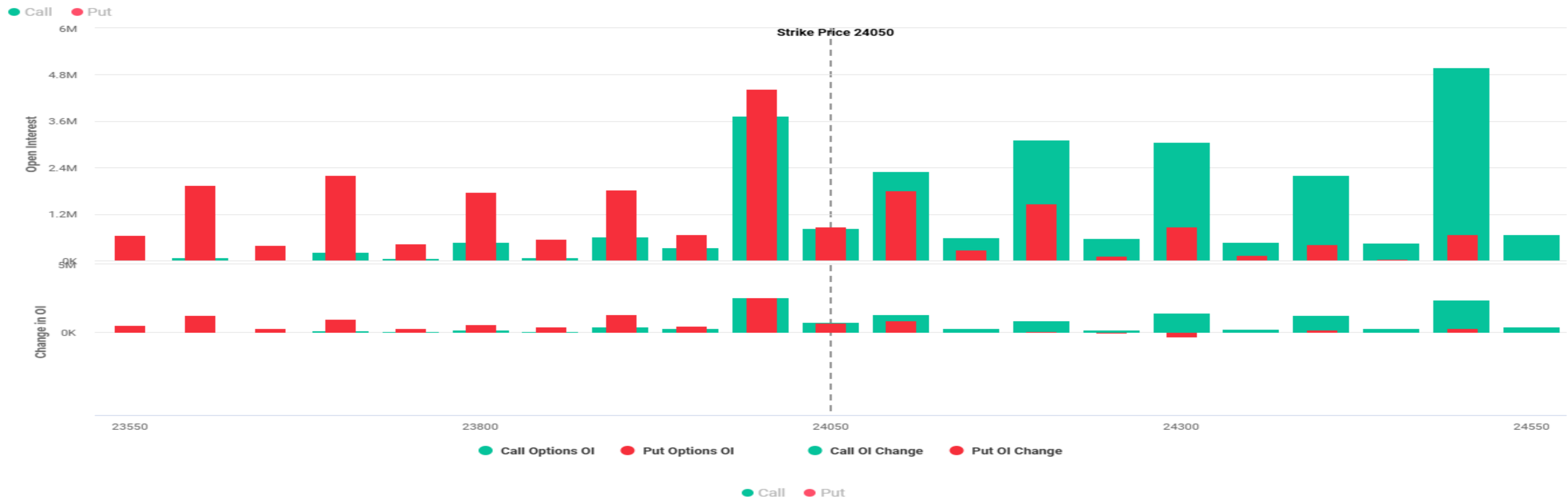
- Bullish “Pole and Flag” pattern.
- Strong bodied bullish candle.
- High traded volumes.
- RSI indicator rising.
- Immediate support at 4075.



Derivative Outlook

Nifty : Option Data

- Maximum Call OI is at 24000 then 24200 strike while Maximum Put OI is at 24000 then 23700 strike.
- Call writing is seen at 24000 then 24100 strike while Put writing is seen at 24000 then 23900 strike.
- Option data suggests a broader trading range in between 23600 to 24400 zones while an immediate range between 23800 to 24200 levels.



Option - Buying side strategy

Index	Single Leg Buying	Multi Leg Strategy
Nifty (Weekly)	24300 CE if it holds above 24000	Bull call spread (Buy 24300 CE and Sell 24400 CE) at net premium cost of 30-35 points
Sensex (Weekly)	77700 CE if it holds above 77000	Bull call spread (Buy 77000 CE and Sell 78000 CE) at net premium cost of 30-40 points
Bank Nifty (Monthly)	57000 CE till it holds below 54750	Bull call spread (Buy 55000 CE and Sell 55500 CE) at net premium cost of 220-240 points

Option - Selling side strategy

Index	Writing
Nifty (Weekly)	23100 PE and 25000 CE
Sensex (Weekly)	75500 PE and 78800 CE
Bank Nifty (Monthly)	50000 PE and 59000 CE

<i>Weekly Option Range for Option Writers based on Different Confidence Band</i>								
Date	6-May-26	Weekly Expiry	12-May-26	Days to weekly expiry	5			
Nifty		24033	India VIX		17.9			
Confidence Band	Probability	% Away From Spot	Range			Total Premium (Put + Call)	Types of Trades	
			Put	Premium	Call	Premium		
1.00	68%	± 1.6%	23650	63	24450	72	135	Aggressive
1.25	79%	± 2.0%	23550	46	24550	50	96	Less Aggressive
1.50	87%	± 2.4%	23450	34	24650	35	69	Neutral
1.75	92%	± 2.8%	23350	25	24750	23	48	Conservative
2.00	95%	± 3.5%	23200	16	24900	12	28	Most Conservative
Date	6-May-26	Monthly Expiry	26-May-26	Days to weekly expiry	15			
Bank Nifty		54547						
Confidence Band	Probability	% Away From Spot	Range			Total Premium (Put + Call)	Types of Trades	
			Put	Premium	Call	Premium		
1.00	68%	± 3.9%	52400	323	56600	350	673	Aggressive
1.25	79%	± 4.9%	51900	245	57100	247	492	Less Aggressive
1.50	87%	± 6.0%	51300	176	57700	163	339	Neutral
1.75	92%	± 6.9%	50800	132	58200	117	249	Conservative
2.00	95%	± 7.8%	50300	99	58700	82	181	Most Conservative

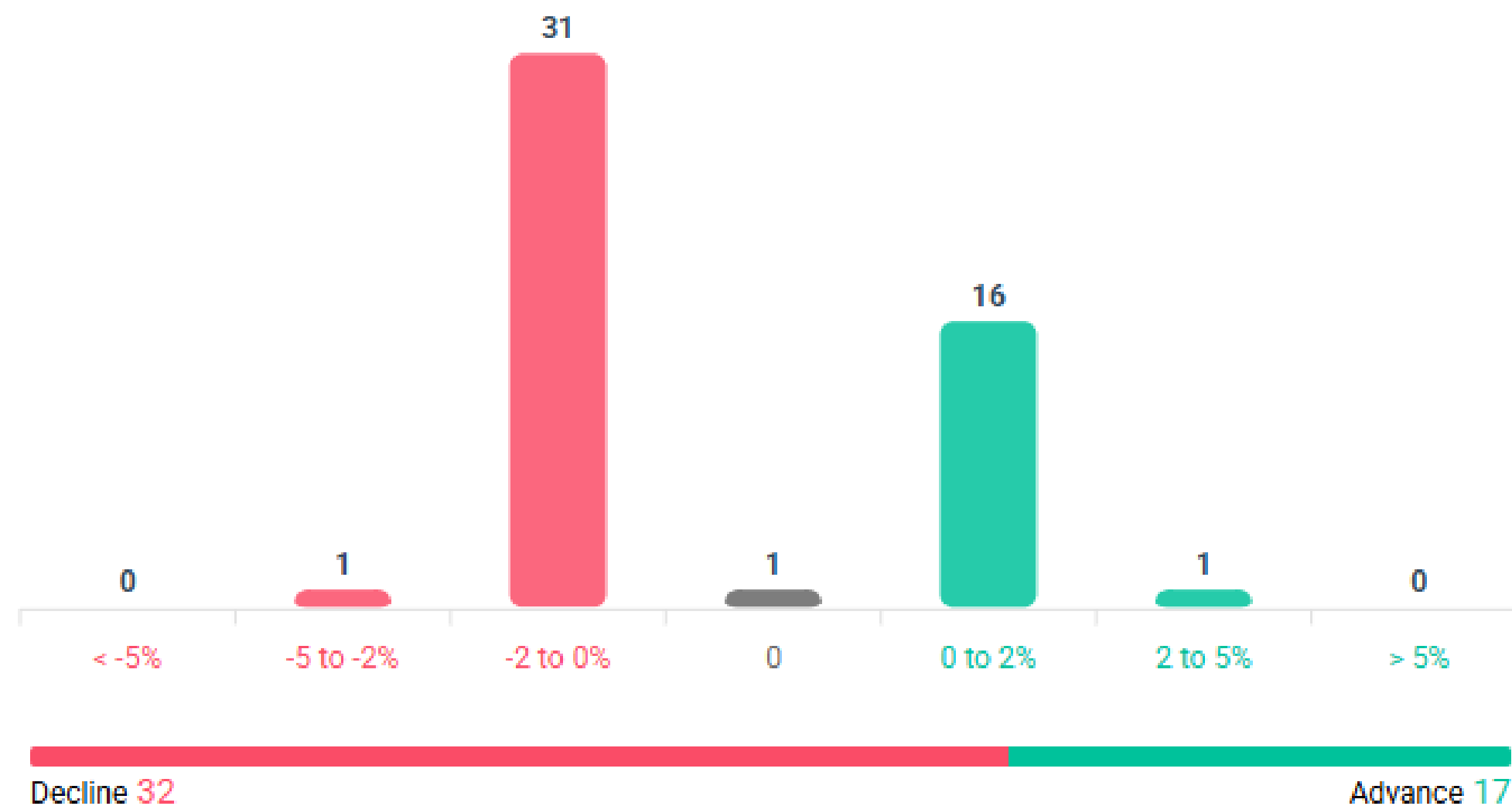
Investments in securities markets are subject to market risks. Please read all related documents carefully.

Nifty Advance Decline & Ban update

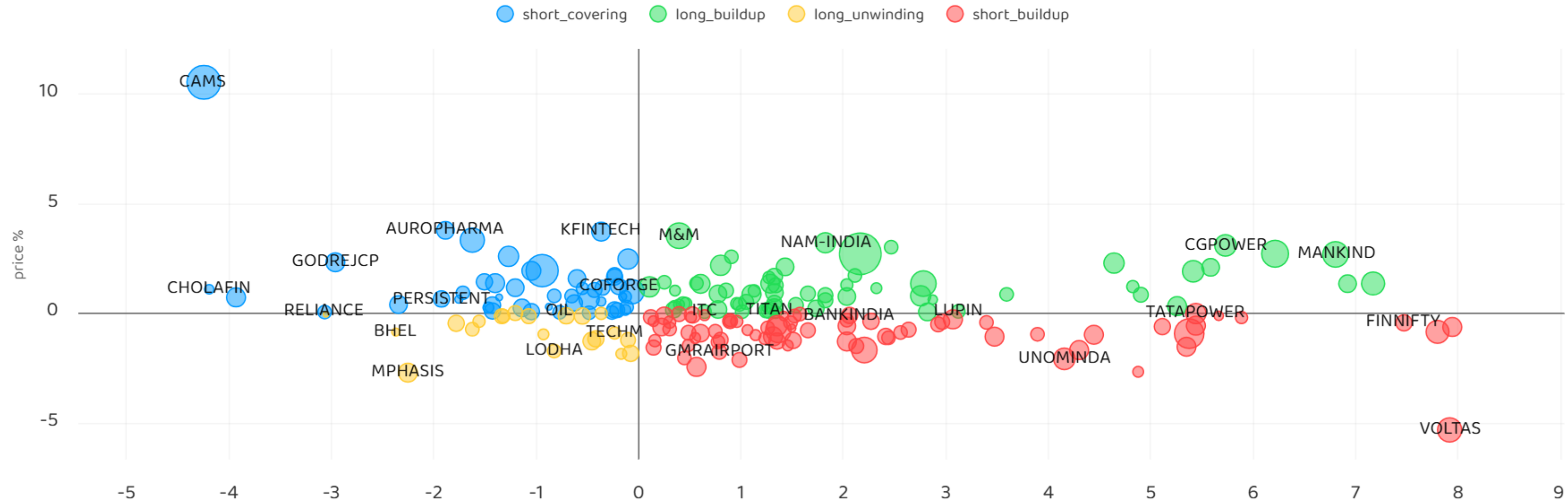
Stocks in Ban:

NIL

All FNO **Nifty 50** Bank Nifty Fin Nifty



Stocks : Derivatives Outlook



Stocks : Options on radar

Stock	Call Strike	Trade	Buying Range	SL	TGT	Logic
AUROPHARMA	1420 CE	Buy	44-50	40	60	Short Covering
HDFCAMC	2820 CE	Buy	97-100	90	115	Long Build up
ULTRACEMCO	12000 CE	Buy	285-290	235	400	Short Covering

Stock	Call Strike	Trade	Buying Range	SL	TGT	Logic
MUTHOOTFIN	3400 PE	Buy	100-105	90	125	Short Build up
UNOMINDA	1100 PE	Buy	44-46	40	55	Short Build up

Quant Outlook

Quant Intraday Sell Ideas

What is this?

Based on technical indicators this strategy gives 2 stocks that have a high likelihood to fall during the day (from open to close). This is an intraday Sell strategy which can provide a good cushioning during a black swan event.

Today's **Sell** Ideas:

Stock Names	Close Price	SL (1%)	TP (1%)
APLAPOLLO (Sell)	1880	1898	1861
GODREJPROP (Sell)	1811	1829	1792

What are the rules?

- Stock names will be given at market open (9:15 am)
- Recommended time to entry: between 9:15 to 9:30 am.
- Entry: We short 2 stocks daily (intraday)
- Exit: we will exit at 3:15 as this is an intraday call
- SL: is placed at 1% of the open.
- Book profit: At 1% fall since open.
- In special situations the book profit might be delayed if the stock is in free fall.

Siddhartha Khemka
Head – Retail Research

Chandan Taparua, CMT, CFTe
Head – Derivatives & Technical Research

Ruchit Jain
Head – Technical Research

Disclosures:

The following Disclosures are being made in compliance with the SEBI Research Analyst Regulations 2014 (herein after referred to as the Regulations).

Motilal Oswal Financial Services Ltd. (MOFSL) is a SEBI Registered Research Analyst having registration no. INH000000412 and BSE enlistment no. 5028. MOFSL, the Research Entity (RE) as defined in the Regulations, is engaged in the business of providing Stock broking services, Depository participant services & distribution of various financial products. MOFSL is a listed public company, the details in respect of which are available on www.motilaloswal.com. MOFSL is registered with the Securities & Exchange Board of India (SEBI) and is a registered Trading Member with National Stock Exchange of India Ltd. (NSE) and Bombay Stock Exchange Limited (BSE), Multi Commodity Exchange of India Limited (MCX) and National Commodity & Derivatives Exchange Limited (NCDEX) for its stock broking activities & is Depository participant with Central Depository Services Limited (CDSL) National Securities Depository Limited (NSDL), NERL, COMRIS and CCRL and is member of Association of Mutual Funds of India (AMFI) for distribution of financial products and Insurance Regulatory & Development Authority of India (IRDA) as Corporate Agent for insurance products and is a member of Association of Portfolio Managers in India (APMI) for distribution of PMS products. Details of associate entities of Motilal Oswal Financial Services Ltd. are available on the website at <http://onlinereports.motilaloswal.com/Dormant/documents/Associate%20Details.pdf>

Details of pending Enquiry Proceedings of Motilal Oswal Financial Services Limited are available on the website at <https://galaxy.motilaloswal.com/ResearchAnalyst/PublishViewLitigation.aspx>. As per Regulatory requirements, Research Audit Report is uploaded on www.motilaloswal.com > MOFSL-Important Links > MOFSL Research Analyst Compliance Audit Report.

MOFSL, its associates, Research Analyst or their relatives may have any financial interest in the subject company. MOFSL and/or its associates and/or Research Analyst or their relatives may have actual beneficial ownership of 1% or more securities in the subject company at the end of the month immediately preceding the date of publication of the Research Report or date of the public appearance. MOFSL and its associate company(ies), their directors and Research Analyst and their relatives may have any other potential conflict of interests at the time of publication of the research report or at the time of public appearance, however the same shall have no bearing whatsoever on the specific recommendations made by the analyst(s), as the recommendations made by the analyst(s) are completely independent of the views of the associates of MOFSL even though there might exist an inherent conflict of interest in some of the stocks mentioned in the research report..

In the past 12 months, MOFSL or any of its associates may have:

- received any compensation/other benefits from the subject company of this report
- managed or co-managed public offering of securities from subject company of this research report,
- received compensation for investment banking or merchant banking or brokerage services from subject company of this research report,
- received compensation for products or services other than investment banking or merchant banking or brokerage services from the subject company of this research report.

- MOFSL and its associates have not received any compensation or other benefits from the subject company or third party in connection with the research report.
- Subject Company may have been a client of MOFSL or its associates during twelve months preceding the date of distribution of the research report.
- Research Analyst may have served as director/officer/employee in the subject company.
- MOFSL and research analyst may engage in market making activity for the subject company.

MOFSL and its associate company(ies), and Research Analyst and their relatives from time to time may have:

a) a long or short position in, act as principal in, and buy or sell the securities or derivatives thereof of companies mentioned herein.

(b) be engaged in any other transaction involving such securities and earn brokerage or other compensation or act as a marketmaker in the financial instruments of the company(ies) discussed herein or act as an advisor or lender/borrower to such company(ies) or may have any other potential conflict of interests with respect to any recommendation and other related information and opinions.; however the same shall have no bearing whatsoever on the specific recommendations made by the analyst(s), as the recommendations made by the analyst(s) are completely independent of the views of the associates of MOFSL even though there might exist an inherent conflict of interest in some of the stocks mentioned in the research report.

Above disclosures include beneficial holdings lying in demat account of MOFSL which are opened for proprietary investments only. While calculating beneficial holdings, It does not consider demat accounts which are opened in name of MOFSL for other purposes (i.e holding client securities, collaterals, error trades etc.). MOFSL also earns DP income from clients which are not considered in above disclosures.

To enhance transparency, MOFSL has incorporated a Disclosure of Interest Statement in this document. This should, however, not be treated as endorsement of the views expressed in the report. MOFSL and / or its affiliates do and seek to do business including investment banking with companies covered in its research reports. As a result, the recipients of this report should be aware that MOFSL may have a potential conflict of interest that may affect the objectivity of this report.

Terms & Conditions:

This report has been prepared by MOFSL and is meant for sole use by the recipient and not for circulation. The report and information contained herein is strictly confidential and may not be altered in any way, transmitted to, copied or distributed, in part or in whole, to any other person or to the media or reproduced in any form, without prior written consent of MOFSL. The report is based on the facts, figures and information that are considered true, correct, reliable and accurate. The intent of this report is not recommendatory in nature. The information is obtained from publicly available media or other sources believed to be reliable. Such information has not been independently verified and no guaranty, representation of warranty, express or implied, is made as to its accuracy, completeness or correctness. All such information and opinions are subject to change without notice. The report is prepared solely for informational purpose and does not constitute an offer document or solicitation of offer to buy or sell or subscribe for securities or other financial instruments for the clients. Though disseminated to all the customers simultaneously, not all customers may receive this report at the same time. MOFSL will not treat recipients as customers by virtue of their receiving this report.

Analyst Certification

The views expressed in this research report accurately reflect the personal views of the analyst(s) about the subject securities or issues, and no part of the compensation of the research analyst(s) was, is, or will be directly or indirectly related to the specific recommendations and views expressed by research analyst(s) in this report.

Disclosure of Interest Statement

Analyst ownership of the stock No

A graph of daily closing prices of securities is available at www.nseindia.com, www.bseindia.com. Research Analyst views on Subject Company may vary based on Fundamental research and Technical Research. Proprietary trading desk of MOFSL or its associates maintains arm's length distance with Research Team as all the activities are segregated from MOFSL research activity and therefore it can have an independent view with regards to subject company for which Research Team have expressed their views.

Regional Disclosures (outside India)

This report is not directed or intended for distribution to or use by any person or entity resident in a state, country or any jurisdiction, where such distribution, publication, availability or use would be contrary to law, regulation or which would subject MOFSL & its group companies to registration or licensing requirements within such jurisdictions.

For Hong Kong:

This report is distributed in Hong Kong by Motilal Oswal capital Markets (Hong Kong) Private Limited, a licensed corporation (CE AYY-301) licensed and regulated by the Hong Kong Securities and Futures Commission (SFC) pursuant to the Securities and Futures Ordinance (Chapter 571 of the Laws of Hong Kong) "SFO". As per SEBI (Research Analyst Regulations) 2014 Motilal Oswal Financial Services Limited (SEBI Reg No. INH000000412) has an agreement with Motilal Oswal capital Markets (Hong Kong) Private Limited for distribution of research report in Hong Kong. This report is intended for distribution only to "Professional Investors" as defined in Part I of Schedule 1 to SFO. Any investment or investment activity to which this document relates is only available to professional investor and will be engaged only with professional investors." Nothing here is an offer or solicitation of these securities, products and services in any jurisdiction where their offer or sale is not qualified or exempt from registration. The Indian Analyst(s) who compile this report is/are not located in Hong Kong & are not conducting Research Analysis in Hong Kong.

For U.S.

MOTILAL Oswal Financial Services Limited (MOFSL) is not a registered broker - dealer under the U.S. Securities Exchange Act of 1934, as amended (the "1934 act") and under applicable state laws in the United States. In addition MOFSL is not a registered investment adviser under the U.S. Investment Advisers Act of 1940, as amended (the "Advisers Act" and together with the 1934 Act, the "Acts"), and under applicable state laws in the United States. Accordingly, in the absence of specific exemption under the Acts, any brokerage and investment services provided by MOFSL, including the products and services described herein are not available to or intended for U.S. persons. This report is intended for distribution only to "Major Institutional Investors" as defined by Rule 15a-6(b)(4) of the Exchange Act and interpretations thereof by SEC (henceforth referred to as "major institutional investors"). This document must not be acted on or relied on by persons who are not major institutional investors. Any investment or investment activity to which this document relates is only available to major institutional investors and will be engaged in only with major institutional investors. In reliance on the exemption from registration provided by Rule 15a-6 of the U.S. Securities Exchange Act of 1934, as amended (the "Exchange Act") and interpretations thereof by the U.S. Securities and Exchange Commission ("SEC") in order to conduct business with Institutional Investors based in the U.S., MOFSL has entered into a chaperoning agreement with a U.S. registered broker-dealer, Motilal Oswal Securities International Private Limited. ("MOSIPL"). Any business interaction pursuant to this report will have to be executed within the provisions of this chaperoning agreement.

The Research Analysts contributing to the report may not be registered /qualified as research analyst with FINRA. Such research analyst may not be associated persons of the U.S. registered broker-dealer, MOSIPL, and therefore, may not be subject to NASD rule 2711 and NYSE Rule 472 restrictions on communication with a subject company, public appearances and trading securities held by a research analyst account.

For Singapore

In Singapore, this report is being distributed by Motilal Oswal Capital Markets (Singapore) Pte. Ltd. ("MOCMSPL") (UEN 201129401Z), which is a holder of a capital markets services license and an exempt financial adviser in Singapore. This report is distributed solely to persons who (a) qualify as "institutional investors" as defined in section 4A(1)(c) of the Securities and Futures Act of Singapore ("SFA") or (b) are considered "accredited investors" as defined in section 2(1) of the Financial Advisers Regulations of Singapore read with section 4A(1)(a) of the SFA. Accordingly, if a recipient is neither an "institutional investor" nor an "accredited investor", they must immediately discontinue any use of this Report and inform MOCMSPL .

In respect of any matter arising from or in connection with the research you could contact the following representatives of MOCMSPL. In case of grievances for any of the services rendered by MOCMSPL write to grievances@motilaloswal.com.

Nainesh Rajani

Email: nainesh.rajani@motilaloswal.com

Contact: (+65) 8328 0276

Disclaimer:

This report is intended for distribution to Retail Investors.

The report and information contained herein is strictly confidential and meant solely for the selected recipient and may not be altered in any way, transmitted to, copied or distributed, in part or in whole, to any other person or to the media or reproduced in any form, without prior written consent. This report and information herein is solely for informational purpose and may not be used or considered as an offer document or solicitation of offer to buy or sell or subscribe for securities or other financial instruments. Nothing in this report constitutes investment, legal, accounting and tax advice or a representation that any investment or strategy is suitable or appropriate to your specific circumstances. The securities discussed and opinions expressed in this report may not be suitable for all investors, who must make their own investment decisions, based on their own investment objectives, financial positions and needs of specific recipient. This may not be taken in substitution for the exercise of independent judgment by any recipient. Each recipient of this document should make such investigations as it deems necessary to arrive at an independent evaluation of an investment in the securities of companies referred to in this document (including the merits and risks involved), and should consult its own advisors to determine the merits and risks of such an investment. The investment discussed or views expressed may not be suitable for all investors. Certain transactions-including those involving futures, options, another derivative products as well as non-investment grade securities - involve substantial risk and are not suitable for all investors. No representation or warranty, express or implied, is made as to the accuracy, completeness or fairness of the information and opinions contained in this document. The Disclosures of Interest Statement incorporated in this document is provided solely to enhance the transparency and should not be treated as endorsement of the views expressed in the report. This information is subject to change without any prior notice. The Company reserves the right to make modifications and alternations to this statement as may be required from time to time without any prior approval. MOFSL, its associates, their directors and the employees may from time to time, effect or have effected an own account transaction in, or deal as principal or agent in or for the securities mentioned in this document. They may perform or seek to perform investment banking or other services for, or solicit investment banking or other business from, any company referred to in this report. Each of these entities functions as a separate, distinct and independent of each other. The recipient should take this into account before interpreting the document. This report has been prepared on the basis of information that is already available in publicly accessible media or developed through analysis of MOFSL. The views expressed are those of the analyst, and the Company may or may not subscribe to all the views expressed therein. This document is being supplied to you solely for your information and may not be reproduced, redistributed or passed on, directly or indirectly, to any other person or published, copied, in whole or in part, for any purpose. This report is not directed or intended for distribution to, or use by, any person or entity who is a citizen or resident of or located in any locality, state, country or other jurisdiction, where such distribution, publication, availability or use would be contrary to law, regulation or which would subject MOFSL to any registration or licensing requirement within such jurisdiction. The securities described herein may or may not be eligible for sale in all jurisdictions or to certain category of investors. Persons in whose possession this document may come are required to inform themselves of and to observe such restriction. Neither the Firm, not its directors, employees, agents or representatives shall be liable for any damages whether direct or indirect, incidental, special or consequential including lost revenue or lost profits that may arise from or in connection with the use of the information. The person accessing this information specifically agrees to exempt MOFSL or any of its affiliates or employees from, any and all responsibility/liability arising from such misuse and agrees not to hold MOFSL or any of its affiliates or employees responsible for any such misuse and further agrees to hold MOFSL or any of its affiliates or employees free and harmless from all losses, costs, damages, expenses that may be suffered by the person accessing this information due to any errors and delays.

This report is meant for the clients of Motilal Oswal only.

Investment in securities market are subject to market risks. Read all the related documents carefully before investing.

Registration granted by SEBI, enlistment as RA with Exchange and certification from NISM in no way guarantee performance of the intermediary or provide any assurance of returns to investors

Registered Office Address: Motilal Oswal Tower, Rahimtullah Sayani Road, Opposite Parel ST Depot, Prabhadevi, Mumbai-400025; Tel No.: 022 - 71934200 / 71934263; www.motilaloswal.com. Correspondence Address: Palm Spring Centre, 2nd Floor, Palm Court Complex, New Link Road, Malad (West), Mumbai- 400 064. Tel No: 022 71881000. Details of Compliance Officer: Neeraj Agarwal, Email Id: na@motilaloswal.com, Contact No.:022-40548085.

Grievance Redressal Cell:

Contact Person	Contact No.	Email ID
Ms. Hemangi Date	022 40548000 / 022 67490600	query@motilaloswal.com
Ms. Kumud Upadhyay	022 40548082	servicehead@motilaloswal.com
Mr. Ajay Menon	022 40548083	am@motilaloswal.com
Mr. Neeraj Agarwal	022 40548085	na@motilaloswal.com
Mr. Siddhartha Khemka	022 50362452	po.research@motilaloswal.com

Registration details: Motilal Oswal Financial Services Ltd. (MOFSL): INZ000158836 (BSE/NSE/MCX/NCDEX); CDSL and NSDL: IN-DP-16-2015; Research Analyst: INH000000412, BSE enlistment no. 5028, AMFI registered Mutual Fund Distributor and SIF Distributor: ARN .: 146822. IRDA Corporate Agent – CA0579, APMI: APRN00233. Motilal Oswal Financial Services Ltd. is a distributor of Mutual Funds, PMS, Fixed Deposit, Insurance, Bond, NCDs and IPO products.

Customer having any query/feedback/ clarification may write to query@motilaloswal.com. In case of grievances for any of the services rendered by Motilal Oswal Financial Services Limited (MOFSL) write to grievances@motilaloswal.com, for DP to dp grievances@motilaloswal.com.

Investment in securities market are subject to market risks, read all the related documents carefully before investing.