

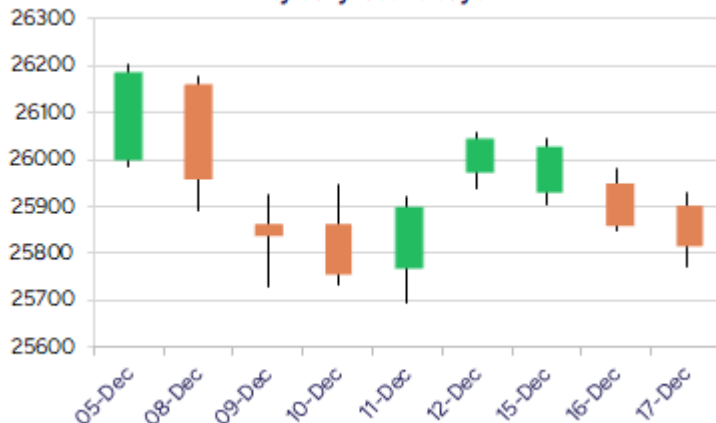
Date: 18<sup>th</sup> December 2025

\* Sensex 84559.65 -120.21

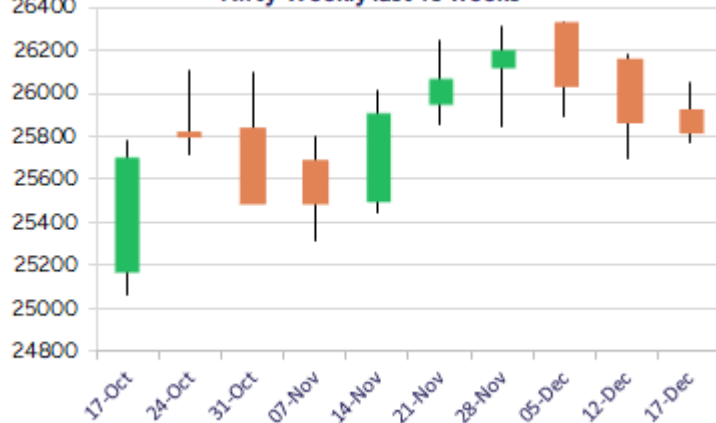
\* Nifty 25818.55 -41.55

\* Bank Nifty 58926.75 -107.85

Nifty daily last 10 days



Nifty Weekly last 10 weeks



\*Blue candle → Close rate > Open rate \* Red candle → Close rate < Open rate

## Market Preview

### Nifty hovers near the 50EMA

Nifty witnessed a sluggish session with a narrow range-bound movement, just managing to sustain above the 50EMA level of the 25770 zone, with the bias remaining cautious. BankNifty was gripped within a narrow range between the 59100 and 58800 zones with no clear direction as of now, with bias and sentiment precariously placed. The market breadth ended on a weak note, with the advance decline indicating a ratio of 1:2 at close.

## Market Forecast

### Nifty daily range 25650-26000

Nifty witnessed another day of profit booking, which ended above the 25800 zone with bias slightly weakened and with near-term support positioned near the 25750 level; it would need a revival to maintain the bias intact. With the overall bias still maintained positive, we have the major support near the 25700 zone, while on the upside a decisive breach above the 26050 level is necessary to establish conviction and continue with the positive uptrend in the coming days, having the 26200 level as the next immediate target.

BankNifty continued to move within the tight range, resisting near the 59150 zone, witnessing a sluggish session to end near the 59000 level with bias maintained intact. As said earlier, a decisive breach above the 59500 zone is much needed to expect a fresh upward move in the coming days, having the higher target of the 60000 level, with the crucial near-term support positioned near the 50EMA level of 58300, which needs to be sustained to keep the overall bias intact.

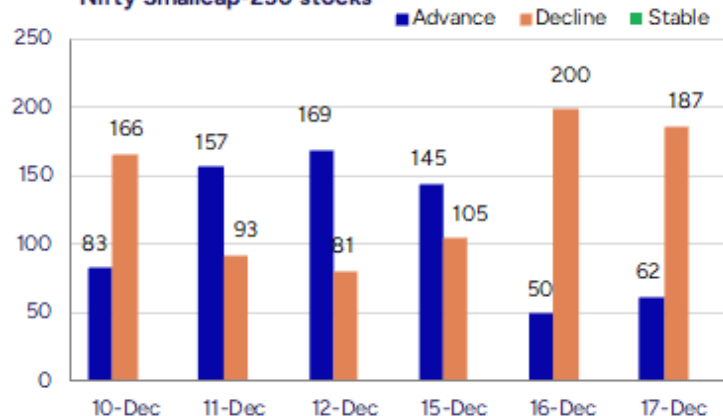
The support for the day is seen at 25650 levels, while the resistance is seen at 26000 levels. BankNifty would have the daily range of 58500-59500 levels.

Sensex	Period	Closing	% Chng	Trend	Reversal	2 Sup	1 Sup	Pivot	1 Res	2 Res
Nifty	Daily	25818.55	-0.16%	-2	25889.65	25681	25750	25839	25908	25998
	Weekly	26046.95	-0.53%	-1	26074.20	25490	25769	25973	26251	26456
	Monthly	26202.95	1.87%	2	25767.20	24953	25578	25944	26569	26935
Bank Nifty	Daily	58926.75	-0.18%	-2	59254.70	58626	58776	58952	59102	59278
	Weekly	59389.95	-0.65%	11	59343.40	58399	58894	59301	59797	60203
	Monthly	59752.70	3.42%	2	58620.10	56200	57976	58935	60712	61671
Sensex	Daily	84559.65	-0.14%	-2	84812.90	84148	84354	84622	84827	85095
	Weekly	85267.66	-0.52%	5	85208.75	83492	84380	85040	85928	86588
	Monthly	85706.67	2.11%	2	84235.40	81429	83568	84811	86950	88193

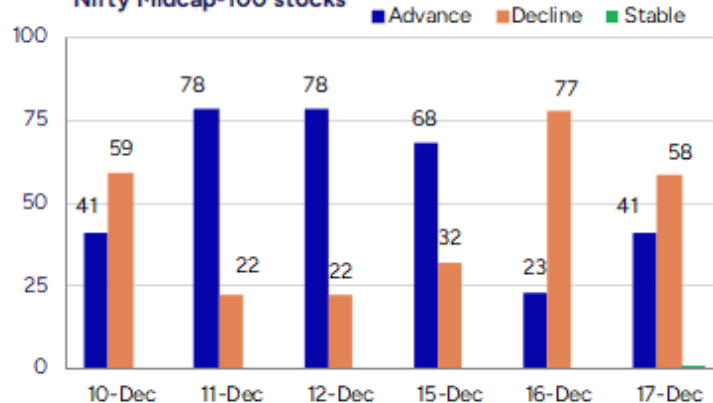
**Gainers - Losers ( Nifty 500 Stocks )**

Gainers				Losers			
Company Name	Last Price	% Gain	Volume	Company Name	Last Price	% Loss	Volume
Aditya Birla F	76.38	2.99%	18439197	Amber Enterpris	6,580.50	-2.94%	245451
Aditya Birla Re	1,746.30	2.70%	376292	Action Const	947.4	-2.86%	151839
Atul	5876	2.02%	31611	Aadhar Housing	477.40	-2.76%	309437
Bank of India	141.96	1.85%	6426402	CAMS	733.80	-2.65%	712736
APL Apollo	1,764.50	1.82%	750140	Alivus Life	887.65	-2.64%	44230
ACME Solar	235.01	1.77%	1027521	Anant Raj	525.45	-2.56%	1743484
Bank of Baroda	287.60	1.68%	13792799	Caplin Labs	1897.8	-2.46%	44171

Nifty Smallcap-250 stocks



Nifty Midcap-100 stocks



## Nifty Daily chart with RSI indicator



## BankNifty Daily chart with RSI indicator



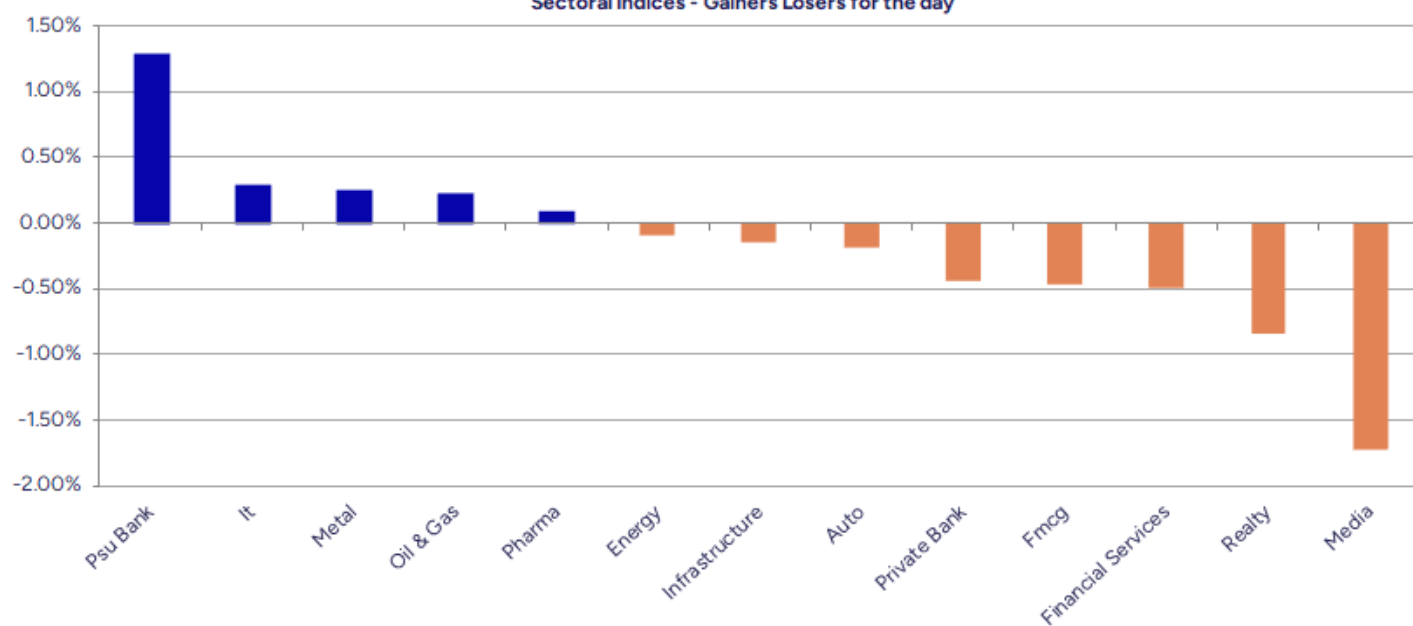
Breakouts - Cross above 200 DMA			
Company Name	LCP	Change %	200 DMA
Moksh Ornaments	15.2	7.50	14.14
Dishman Carbogel	264.95	6.99	247.65
TCI Finance	13.44	4.59	12.85
Party	87.8	4.07	84.37
Hindprakash Ind	137.91	3.89	132.75
Transwarranty	15.67	3.23	15.18
Arman Financial	1572.6	2.56	1533.33
Varvee Global	155.36	2.24	151.95
Amines Plast	224.36	2.24	219.45
Aeroflex Ind.	182.04	1.16	179.95
Pritish Nandy	28.84	1.05	28.54
Maha Rasht Apex	107.11	0.95	106.1
Mangalam Alloys	50	0.87	49.57
Denta Water	346.9	0.77	344.25
Ginni Filaments	39.14	0.77	38.84
Triveni Engg	376.1	0.50	374.23
Bombay Burmah	1890	0.24	1885.46
Ugar Sugar Work	44.92	0.13	44.86

\* Stocks crossing above its Simple Moving Average (200DMA)

Breakdown - Cross below 200 DMA			
Company Name	LCP	Change %	200 DMA
Akzo Nobel	3132.7	-8.38	3419.13
Tainwala Chem	199.26	-6.33	212.72
Gallantt Ispat	514.45	-5.14	542.33
Mask Investment	156.75	-4.63	164.36
Pyramid Techno	158.22	-3.29	163.61
Axiscades Tech	1198.1	-3.19	1237.59
Enfuse Solution	223	-3.03	229.97
Data Patterns	2467.7	-2.85	2540.14
Wonder Elect.	157.57	-2.70	161.95
Brace Port Logi	82	-2.18	83.83
Filatex India	50.35	-2.08	51.42
Barak Vally Cem	41.76	-1.83	42.54
Signet Ind	54.54	-1.73	55.5
LLOYDS ENTER	63.34	-1.52	64.32
Madhav Copper	49.92	-1.46	50.66
JK Paper	356.3	-1.46	361.58
Gandhi Spl Tube	752	-1.40	762.64
CDSL	1477.3	-1.40	1498.3

\* Stocks crossing below its Simple Moving Average (200DMA)

Sectoral Indices - Gainers Losers for the day



Stocks witnessing a volume surge as compared to their 5 day average volume

Watch out for the stocks that have seen a huge spurt in its share price over the last three days

Volume Shockers - NSE						Price Shockers - NSE				
Company name	LCP	% Chg	Volume	Avg Vol *	% Chg	Company name	LCP	Prv Close	% Chg	Volume
Akzo Nobel	3135	-13.49	1603955	3698	43278	Agri-Tech	171.85	129.05	33.17	29070
Roto Pumps	70.6	13.29	9353512	27968	33344	Meesho	216.35	165.2	30.96	17453633
Krishna Institu	645.5	-2.42	580468	4103	14047	Mahamaya Life	173	138	25.36	742800
Mahindra Holida	302.8	-0.18	558145	4424	12516	Tainwala Chem	197.3	158.65	24.36	6058
United Spirits	1417.5	-2.29	458668	5080	8928	Amines Plast	221.25	178	24.3	26134
Lakhotia Poly	63	5	181800	2623	6832	Bhatia Colour	370	301.55	22.7	24800
SG FINSERVE	399.65	1.98	308130	4708	6445	Samor Reality	78.5	64.73	21.27	2670
EPack Durables	295.95	-1.87	6905018	120705	5621	Seshachal Tech	38.51	31.77	21.21	50
Apex Frozen	298.4	13.35	906085	16454	5407	GEM Enviro Mana	56.4	47	20	53600
Eicher Motors	7143.2	1.18	315964	7054	4379	Dishman Carbogee	263.85	220.05	19.9	81279
Polycab	7069.1	-4.13	199765	4940	3944	AVG Logistics	197.1	166.45	18.41	2469
Krishanveer For	142.65	6.73	117694	3022	3794	Modipon	39.99	34.27	16.69	61
Ahluwalia	954.7	0.03	80130	2730	2835	Key Corporation	87.44	75.05	16.51	2484
Vikram Kamats	55	-0.31	78942	3866	1942	Spice Islands	121.94	105.35	15.75	40169
Bank of Baroda	287.25	1.56	5072250	268061	1792	Pioneer Invest	109.24	94.38	15.74	8298
SBI Life Insura	2008.9	-1.26	107813	6127	1660	ELITECON INTL.	126.6	109.38	15.74	1179370
United Brewerie	1614.45	-0.62	38975	2462	1483	Soma Papers	111.54	96.37	15.74	1014
MM Forgings	372.9	2.52	45037	2871	1469	CDG PETCHEM	85.62	73.98	15.73	2100
Atlanta	45.72	4.98	84940	5435	1463	Mewar Hi-Tech E	80.77	69.79	15.73	750
Manappuram Fin	286.5	0.9	1369625	88663	1445	Shlokka Dyes	43.33	37.44	15.73	7200
Dishman Carbogee	263.85	14.42	81279	5999	1255	IB Infotech Ent	231	199.6	15.73	361



## Nifty 50 stocks - Summary Details

Symbol	LTP	Chng	% Chng	Volume (lacs)	Turnover (crs.)	52w High	Diff with 52w H	52w Low	Diff with 52w L	30 days % chng	365 days % chng
NIFTY 50	25818.55	-41.55	-0.16%	2065.21	19787.45	26325.80	1.93%	21743.65	18.74%	-0.19%	4.41%
ADANIENT	2232.00	-15.90	-0.71%	6.52	145.59	2616.50	14.70%	1967.52	13.44%	-10.68%	-11.06%
ADANIPTS	1487.10	-11.90	-0.79%	9.64	143.51	1549.00	4.00%	1010.75	47.13%	-0.91%	18.97%
APOLLOHOSP	6912.00	-139.50	-1.98%	3.58	249.05	8099.50	14.66%	6001.00	15.18%	-4.97%	-2.86%
ASIANPAINT	2785.80	-5.10	-0.18%	6.36	177.46	2985.70	6.70%	2124.75	31.11%	-3.97%	15.92%
AXISBANK	1226.00	6.40	0.52%	51.47	632.65	1304.00	5.98%	933.50	31.33%	-1.77%	6.22%
BAJAJ-AUTO	8868.00	-140.00	-1.55%	2.56	228.93	9490.00	6.55%	7089.35	25.09%	1.87%	-0.15%
BAJAJFINSV	2020.50	-14.70	-0.72%	3.98	80.63	2195.00	7.95%	1551.65	30.22%	-1.48%	21.16%
BAJFINANCE	1000.10	1.70	0.17%	46.96	470.37	1102.50	9.29%	679.20	47.25%	-1.97%	-86.10%
BEL	385.40	-2.60	-0.67%	66.13	255.25	436.00	11.61%	240.25	60.42%	-9.10%	22.92%
BHARTIARTL	2109.00	7.00	0.33%	64.13	1350.78	2174.50	3.01%	1559.50	35.24%	0.06%	24.99%
CIPLA	1498.00	-1.60	-0.11%	10.00	149.53	1673.00	10.46%	1335.00	12.21%	-2.12%	3.61%
COALINDIA	384.40	2.80	0.73%	36.51	140.23	417.25	7.87%	349.25	10.06%	-1.38%	-6.99%
DRREDDY	1272.00	-4.90	-0.38%	8.94	113.98	1405.90	9.52%	1020.00	24.71%	2.48%	2.45%
EICHERMOT	7143.00	81.50	1.15%	5.94	424.82	7328.50	2.53%	4646.00	53.75%	5.47%	46.33%
ETERNAL	283.60	-0.85	-0.30%	271.54	776.40	368.45	23.03%	194.80	45.59%	-6.35%	#VALUE!
GRASIM	2805.80	6.70	0.24%	4.20	117.28	2977.80	5.78%	2276.95	23.23%	0.56%	3.95%
HCLTECH	1655.10	3.40	0.21%	13.95	230.83	2012.20	17.75%	1302.75	27.05%	3.58%	-16.11%
HDFCBANK	985.20	-9.10	-0.92%	190.81	1879.87	1020.50	3.46%	812.15	21.31%	0.47%	-46.88%
HDFCLIFE	752.95	-11.40	-1.49%	18.09	136.62	820.75	8.26%	584.30	28.86%	-1.21%	20.84%
HINDALCO	848.00	10.85	1.30%	32.70	277.05	864.00	1.85%	546.45	55.18%	4.17%	26.44%
HINDUNILVR	2278.00	-3.10	-0.14%	8.08	183.96	2750.00	17.16%	2136.00	6.65%	-6.04%	-4.56%
ICICIBANK	1353.50	-12.50	-0.92%	94.40	1275.00	1500.00	9.77%	1186.00	14.12%	-0.51%	1.57%
INDIGO	4977.00	3.00	0.06%	16.01	796.33	6232.50	20.14%	3945.00	26.16%	-15.82%	12.21%
INFY	1602.00	9.10	0.57%	48.18	770.92	1999.60	19.88%	1307.00	22.57%	6.00%	-20.34%
ITC	400.25	-1.45	-0.36%	80.87	323.93	491.00	18.48%	390.15	2.59%	-1.58%	-14.53%
JIOFIN	293.00	-2.25	-0.76%	59.07	173.34	342.45	14.44%	198.65	47.50%	-6.24%	-13.10%
JSWSTEEL	1076.10	-6.50	-0.60%	17.82	192.65	1223.90	12.08%	880.00	22.28%	-7.30%	8.28%
KOTAKBANK	2171.00	-11.40	-0.52%	16.12	350.35	2301.90	5.69%	1723.75	25.95%	4.94%	20.87%
LT	4060.10	-3.70	-0.09%	10.87	441.14	4140.00	1.93%	2965.30	36.92%	1.48%	4.55%
M&M	3612.50	-8.50	-0.23%	12.09	436.94	3795.00	4.81%	2425.00	48.97%	-2.10%	17.51%
MARUTI	16382.00	28.00	0.17%	2.57	422.38	16660.00	1.67%	10725.00	52.75%	4.27%	45.08%
MAXHEALTH	1033.20	-39.80	-3.71%	42.68	442.85	1314.30	21.39%	940.05	9.91%	-2.73%	-9.07%
NESTLEIND	1232.00	-8.60	-0.69%	5.26	64.89	1311.60	6.07%	1055.00	16.78%	-2.44%	-44.95%
NTPC	321.35	0.35	0.11%	50.43	161.93	371.45	13.49%	292.80	9.75%	-2.27%	-10.12%
ONGC	232.52	0.31	0.13%	58.48	135.84	273.50	14.98%	205.00	13.42%	-6.22%	-8.67%
POWERGRID	260.85	0.50	0.19%	109.45	286.35	336.25	22.42%	247.30	5.48%	-4.04%	-22.02%
RELIANCE	1545.10	2.80	0.18%	71.17	1098.91	1581.30	2.29%	1114.85	38.59%	1.54%	21.17%
SBILIFE	2012.90	-23.10	-1.13%	8.96	180.09	2086.60	3.53%	1372.55	46.65%	1.75%	42.50%
SBIN	976.35	15.20	1.58%	80.13	781.13	999.00	2.27%	680.00	43.58%	-0.69%	11.56%
SHRIRAMFIN	866.00	17.60	2.07%	116.21	1003.93	875.45	1.08%	493.35	75.53%	4.83%	-73.17%
SUNPHARMA	1789.50	8.20	0.46%	19.11	341.55	1910.00	6.31%	1548.00	15.60%	1.38%	-1.77%
TATACONSUM	1180.00	10.10	0.86%	15.02	177.21	1202.80	1.90%	882.90	33.65%	1.05%	25.84%
TMPV	345.70	0.25	0.07%	70.45	244.64	810.00	57.32%	341.40	1.26%	-11.69%	#VALUE!
TATASTEEL	170.29	0.46	0.27%	116.25	197.93	186.94	8.91%	122.62	38.88%	-2.54%	14.02%
TCS	3217.80	12.70	0.40%	13.76	442.99	4475.00	28.09%	2866.60	12.25%	3.19%	-28.36%
TECHM	1578.10	-0.10	-0.01%	5.82	91.94	1793.50	12.01%	1209.40	30.49%	9.66%	-12.15%
TITAN	3906.90	-22.60	-0.58%	6.01	235.19	3956.00	1.24%	2925.00	33.57%	2.62%	11.99%
TRENT	4040.30	-68.40	-1.66%	4.60	187.06	7493.05	46.08%	3930.10	2.80%	-6.43%	-41.31%
ULTRACEMCO	11531.00	3.00	0.03%	2.05	236.82	13097.00	11.96%	10047.85	14.76%	-2.91%	-4.60%
WIPRO	261.20	1.98	0.76%	49.23	128.46	324.60	19.53%	228.00	14.56%	6.08%	-16.37%

## Disclaimer / Disclosures

### ANALYST CERTIFICATION

I, Mrs. Vaishali Parekh B.com, Research Analyst, author and the name subscribed to this report, hereby certify that all of the views expressed in this research report accurately reflect our views about the subject issuer(s) or securities. We also certify that no part of our compensation was, is, or will be directly or indirectly related to the specific recommendation(s) or view(s) in this report.

Terms & conditions and other disclosures:

Prabhudas Lilladher Pvt. Ltd, Mumbai, India (hereinafter referred to as "PL") is engaged in the business of Stock Broking, Portfolio Manager, Depository Participant and distribution for third party financial products. PL is a subsidiary of Prabhudas Lilladher Advisory Services Pvt Ltd. which has its various subsidiaries engaged in business of commodity broking, investment banking, financial services (margin funding) and distribution of third party financial/other products, details in respect of which are available at [www.plindia.com](http://www.plindia.com)

This document has been prepared by the Research Division of PL and is meant for use by the recipient only as information and is not for circulation. This document is not to be reported or copied or made available to others without prior permission of PL. It should not be considered or taken as an offer to sell or a solicitation to buy or sell any security.

The information contained in this report has been obtained from sources that are considered to be reliable. However, PL has not independently verified the accuracy or completeness of the same. Neither PL nor any of its affiliates, its directors or its employees accepts any responsibility of whatsoever nature for the information, statements and opinion given, made available or expressed herein or for any omission therein.

Recipients of this report should be aware that past performance is not necessarily a guide to future performance and value of investments can go down as well. The suitability or otherwise of any investments will depend upon the recipient's particular circumstances and, in case of doubt, advice should be sought from an independent expert/advisor.

Either PL or its affiliates or its directors or its employees or its representatives or its clients or their relatives may have position(s), make market, act as principal or engage in transactions of securities of companies referred to in this report and they may have used the research material prior to publication.

PL may from time to time solicit or perform investment banking or other services for any company mentioned in this document.

PL is registered as Research Analyst under Securities and Exchange Board of India (Research Analysts) Regulations, 2014 PL submits that no material disciplinary action has been taken on us by any Regulatory Authority impacting Equity Research Analysis activities.

PL or its research analysts or its associates or his relatives do not have any financial interest in the subject company.

PL or its research analysts or its associates or his relatives do not have actual/beneficial ownership of one per cent or more securities of the subject company at the end of the month immediately preceding the date of publication of the research report.

PL or its research analysts or its associates or his relatives do not have any material conflict of interest at the time of publication of the research report.

PL or its associates might have received compensation from the subject company in the past twelve months.

PL or its associates might have managed or co-managed public offering of securities for the subject company in the past twelve months or mandated by the subject company for any other assignment in the past twelve months.

PL or its associates might have received any compensation for investment banking or merchant banking or brokerage services from the subject company in the past twelve months.

PL or its associates might have received any compensation for products or services other than investment banking or merchant banking or brokerage services from the subject company in the past twelve months PL or its associates might have received any compensation or other benefits from the subject company or third party in connection with the research report.

PL encourages independence in research report preparation and strives to minimize conflict in preparation of research report. PL or its analysts did not receive any compensation or other benefits from the subject Company or third party in connection with the preparation of the research report. PL or its Research Analysts do not have any material conflict of interest at the time of publication of this report.

It is confirmed that Mrs.Vaishali Parekh B.com, Research Analyst of this report has not received any compensation from the companies mentioned in the report in the preceding twelve months compensation of our Research Analysts is not based on any specific merchant banking, investment banking or brokerage service transactions.

The Research analysts for this report certifies that all of the views expressed in this report accurately reflect his or her personal views about the subject company or companies and its or their securities, and no part of his or her compensation was, is or will be, directly or indirectly related to specific recommendations or views expressed in this report.

The research analysts for this report has not served as an officer, director or employee of the subject company PL or its research analysts have not engaged in market making activity for the subject company

Our sales people, traders, and other professionals or affiliates may provide oral or written market commentary or trading strategies to our clients that reflect opinions that are contrary to the opinions expressed herein, and our proprietary trading and investing businesses may make investment decisions that are inconsistent with the recommendations expressed herein. In reviewing these materials, you should be aware that any or all of the foregoing, among other things, may give rise to real or potential conflicts of interest.

PL and its associates, their directors and employees may (a) from time to time, have a long or short position in, and buy or sell the securities of the subject company or (b) be engaged in any other transaction involving such securities and earn brokerage or other compensation or act as a market maker in the financial instruments of the subject company or act as an advisor or lender/borrower to the subject company or may have any other potential conflict of interests with respect to any recommendation and other related information and opinions.