



Solid Research
Solid Relationships

Fundamental Outlook

Market Setup

- U.S. markets recorded new highs on Tuesday, driven by tech stocks
- Dow Futures is currently trading flat with a **loss of -0.01%**
- Asian markets are trading mixed, given uncertainty over the ceasefire in the Middle East conflict
- Indian equities witnessed mild recovery on Tuesday. The Nifty 50 gained **0.4%**, while the Midcap and Smallcap indices advanced **0.2% and 0.4%** respectively.
- Gift nifty is currently trading flat, **19 points lower (-0.08%)**
- FII: **-8,363Cr**; DII: **+9,589 Cr**

Opening Cues: Flat

Stocks in News

Adani Ports: Adani Ports reported 16% Year over Year growth in May cargo volumes, reflecting strong port activity, while logistics rail volumes declined 19% Year over Year.

View: Positive

Alkem Laboratories: The company launched India's first single-shot pre-filled semaglutide syringes for diabetes and obesity management, with prices starting at ₹350 per dose, following DCGI approval.

View: Positive

Jewellery Stocks in Focus: Government mandates approval from the Directorate General of Foreign Trade (DGFT) for silver imports via authorised channels, tightening oversight on bullion inflows. Move follows higher precious metal duties amid concerns over rising import bill and pressure on forex reserves.

View: Negative

Fundamental Actionable Idea

Shriram Finance

CMP: INR913 TP: INR1175 (+29%) View: **BUY**, MTF Stock

- Shriram Finance continues to strengthen its leadership in the retail-focused NBFC space through its deep rural and semi-urban presence, diversified lending portfolio, and disciplined underwriting practices.
- At its recent Investor Day, the company highlighted its medium-term growth roadmap, supported by strong execution capabilities and improving balance sheet strength. The strategic partnership with MUFG, including a capital infusion of ~USD4.4bn for a ~20% stake, significantly enhances growth visibility.
- A key benefit of the MUFG transaction is the expected structural improvement in SHFL's liability profile. The company expects ~1pp reduction in borrowing costs over the next 2-3 years, supported by rating upgrades, liability repricing, lower deposit rates, and improved access to debt capital markets.
- The company remains focused on its core strengths in vehicle finance, MSME lending, and gold loans, while expanding its reach across underpenetrated northern, central, and eastern markets. With healthy growth visibility, margin stability, and improving operating leverage, Shriram Finance is well positioned to deliver a CAGR of ~17%/~26% in AUM/PAT over FY26-28E.

View: **BUY**

Fundamental Actionable Idea

Nippon AMC

CMP INR1090, TP INR1200, 10% Upside, Buy, MTF Stock

- Nippon Life India Asset Management continued to witness strong momentum, with flow share at 10.6%, exceeding its AUM share of 7.3% by 3.3 percentage points, indicating healthy market share gains in mutual fund inflows.
- NAM continues to deliver industry-leading market share gains, with MF QAAUM of INR7t (+23% YoY) and overall share at a five-year high of 8.7%. It is underpinned by steady net inflows, robust SIP momentum, and a favorable equity mix (47% in Dec'25), driving the highest FY26YTD equity share accretion in the industry to 7.1% (+11bp YoY).
- The company is scaling up its alternatives, GIFT City, and offshore platforms, with cumulative AIF commitments of INR89.2b, GIFT City AUM of INR3.7b, and offshore AUM of INR180b, positioning these verticals as incremental growth drivers beyond the core MF franchise amid rising institutional and global investor participation.
- We expect a CAGR of 16%/17%/18% in revenue/EBITDA/core PAT over FY26-28E.

View: BUY

Velocity Idea

Aegis Logistics

RECO: BUY; CMP: ₹767; SL: ₹705(8%); TGT: ₹890(16%)

- Aegis Logistics reported a strong Q4 FY26 performance with consolidated net profit rising 45.7% year-on-year to ₹410.4 crore, while revenue increased 52.2% to ₹2,594.4 crore.
- EBITDA grew 52.7% YoY to ₹624.2 crore, with EBITDA margin improving to 24.1% versus 24.0% a year ago and 17.2% in 3QFY26, driven by strong growth in LPG handling, gas terminal operations and logistics businesses.
- Outlook remains positive as the company reiterated its expansion-led capital expenditure plans across Mumbai, JNPA, Kandla and Pipavav. We expect company to deliver 13% PAT CAGR over FY25–FY28E.
- The Stock has given a Trendline breakout on daily time frame and holding well above the same.
- The RSI indicator is trending upwards and volumes are surging which may support the ongoing up move.

Investment Theme - Basketonomix

Manufacturing Powerhouse

- India's manufacturing sector is witnessing a structural shift supported by PLI incentives, China+1 supply chain diversification and rising defence indigenisation. Cumulative production under PLI schemes has already crossed ₹20 lakh crore.
- The Atmanirbhar Bharat initiative has structurally converted import dependence into domestic manufacturing opportunity – five Positive Indigenisation Lists (PIL) now cover 5,500+ defence items with mandatory local sourcing. Defence production has tripled to ₹1.51 lakh crore in FY25 from ₹46,429 crore in FY15, creating large, policy-guaranteed demand for domestic manufacturers across electronics, systems and components.
- Rising demand from EVs, renewable energy, data centres and GLP-1-linked manufacturing is further opening high-value growth opportunities across the domestic manufacturing ecosystem.

Time Frame: 12 months

Review: Monthly

Upside: 10-15%

Risk: High

Benchmark: Nifty 200

Script	Market Cap (Rs Cr)	CMP as on 1 st June 2026	Weightage (%)
Cummins India	1,56,999	5,679	20
Samvardhana Motherson	1,49,909	142	20
Syrma SGS	21,348	1,107	20
Shaily Engineering Plastics	14,420	3,135	20
Astra Microwave Products	12,493	1,316	20

Weightage Rationale: We have assigned equal weightage to all the stocks in the basket as we expect equal growth opportunity in each of them.

*Investment in securities market are subject to market risks, read all the related documents carefully before investing.

Focus Investment Ideas

All Stocks Available in MTF

Duration : 1 Year Horizon

Stock Name	CMP (Rs)	Target (Rs)	Upside (%)
State Bank of India	957	1300	36%
Mankind Pharma	2299	2980	30%
Groww	191	235	23%
Tata Steel	211	250	18%
Cummins India	5708	6600	16%

Technical Outlook

Nifty Technical Outlook

NIFTY (CMP : 23483) Nifty immediate support is at 23350 then 23222 zone while resistance at 23700 then 23850 zones. Now it has to cross and hold above 23500 zones for an up move towards 23700 then 23850 zones while supports have shifted higher to 23350 then 23222 zones.



Sensex Technical Outlook

Sensex (CMP : 74649) Sensex support is at 74300 then 74000 zones while resistance at 75300 then 75600 zones. Now it has to cross and hold above 74800 zones for a bounce towards 75300 then 75600 levels while on the downside support is seen at 74300 then 74000 zones.



Bank Nifty Technical Outlook

BANK NIFTY (CMP : 53714) Bank Nifty support is at 53500 then 53250 zones while resistance at 54000 then 54500 zones. Now it has to cross and hold above 53750 zones for a bounce towards 54000 then 54500 levels while on the downside support is seen at 53500 then 53250 zones.



Midcap100 Index Technical Outlook

3-Jun-26



Nifty Midcap100 Stats	
Advance	Decline
60	40

- Index is hovering near 20 DEMA.

Investment in securities market are subject to market risks, read all the related documents carefully before investing.

Smallcap250 Index Technical Outlook

3-Jun-26



Nifty SmallCap250 Stats

Advance	Decline
150	100

- Index has bounced from 20 DEMA.

Investment in securities market are subject to market risks, read all the related documents carefully before investing.

Sectoral Performance - Daily

- Most sectors were flattish, NIFTY IT outperformed.

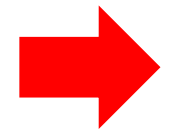
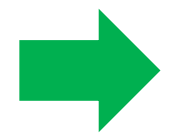
3-Jun-26

Indices	Closing 02-Jun	% Change				
		1-day	2-days	3-days	5-days	
NIFTY 50	23484	0.43%	-0.27%	-1.77%	-2.28%	
NIFTY BANK	53715	0.13%	-0.97%	-2.08%	-2.86%	
NIFTY MIDCAP 100	60942	0.19%	-1.27%	-2.58%	-1.65%	
NIFTY SMALLCAP 250	16947	0.53%	-0.27%	-0.92%	-0.18%	
NIFTY FINANCIAL SERVICES	24861	-0.59%	-1.94%	-3.46%	-4.75%	
NIFTY PRIVATE BANK	26011	-0.22%	-1.20%	-2.36%	-3.40%	
NIFTY PSU BANK	8049	0.55%	-1.31%	-2.14%	-2.29%	
NIFTY IT	31117	4.23%	7.00%	7.64%	7.37%	
NIFTY FMCG	48613	0.76%	-1.56%	-3.05%	-3.08%	
NIFTY OIL & GAS	11139	-0.18%	-0.55%	-3.01%	-3.35%	
NIFTY PHARMA	24006	-0.86%	-1.39%	-2.87%	-2.71%	
NIFTY AUTO	26079	0.72%	-0.98%	-2.92%	-1.45%	
NIFTY METAL	13558	0.38%	0.87%	-1.17%	1.59%	
NIFTY REALTY	773	0.67%	-1.18%	-1.43%	-1.62%	
NIFTY INDIA DEFENCE	8990	0.74%	-1.29%	-2.85%	-2.49%	

Investment in securities market are subject to market risks, read all the related documents carefully before investing.

Sectoral Performance - Weekly

- Nifty IT is outperforming for last few weeks, Nifty FMCG is underperforming.



Name	1W Change	2W Change	3W Change	4W Change	5W Change
Nifty 50	-0.27	-0.99	-0.68	-2.86	-2.14
Nifty Bank	-0.97	-0.63	0.01	-2.89	-2.09
Nifty IT	7	7.62	12.27	5.86	6
Nifty Auto	-0.98	0.24	0.03	-4.33	0.62
Nifty Metal	0.87	2.16	1.93	3.88	5.65
Nifty Pharma	-1.39	-2.31	-2.55	-0.43	3.17
Nifty FMCG	-1.56	-3.26	-4.78	-4.99	-4.82
Nifty Realty	-1.18	-0.14	2.25	-6.1	-2.55
Nifty Media	1.49	3.98	-0.48	-2.96	-1.84
Nifty PSU Bank	-1.31	0.54	0.27	-3.86	-5.11

Technical – Conviction Delivery Idea

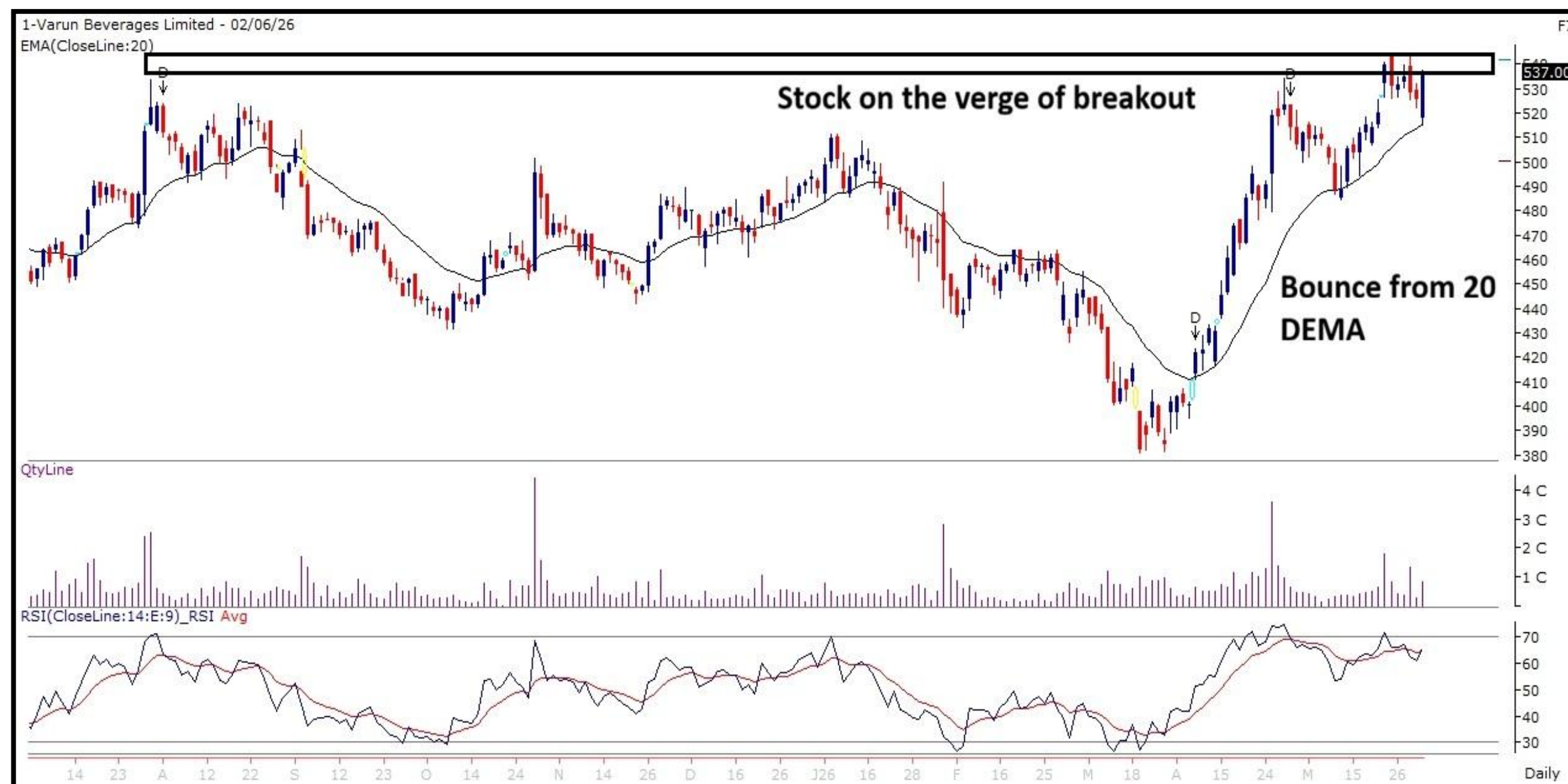
VBL

(Mcap ₹ 1,81,663 Cr.)

F&O Stock, MTF stock

- Stock is on the verge of breakout
- Sustaining above 20 DEMA.
- RSI is trending Upward.
- Surge in volume during positive days.
- We recommend to buy the stock at CMP ₹537 with a SL of ₹ 510 and a TGT of ₹580.

RECOs	CMP	SL	TARGET	DURATION
BUY	537	510	580	1 Week



Technical Stocks On Radar

PREMIERENE

(CMP: 1074, Mcap ₹ 48,766 Cr.)

MTF stock

- Stock has given trendline breakout on weekly.
- Stock is sustaining above 20 DEMA.
- RSI is trending upward.
- Immediate support at 1040.



TITAGARH

(CMP: 835, Mcap ₹ 11,271 Cr.)

F&O Stock

- Stock is on the verge of breakout
- Sustaining above 20DEMA
- RSI is trending upward.
- Immediate resistance at 810



Investment in securities market are subject to market risks, read all the related documents carefully before investing.

Technical Chart Pattern for the Day

EXIDE (Mcap ₹ 34,531 Cr.) (CMP : 406)

F&O Stock, MTF stock

3-Jun-26



- Bullish “Flag & Pole” breakout on daily chart.

Derivative Outlook

Nifty : Option Data

- Maximum Call OI is at 24000 then 23500 strike while Maximum Put OI is at 23300 then 23000 strike.
- Call writing is seen at 23300 then 23500 strike while Put writing is seen at 23300 then 23500 strike.
- Option data suggests a broader trading range in between 23100 to 24000 zones while an immediate range between 23300 to 23700 levels.



Option - Buying side strategy

Index	Single Leg Buying	Multi Leg Strategy
Nifty (Weekly)	23700 CE till it sustains above 23500 zones	Bull call spread (Buy 23800 CE and Sell 23900 CE) at net premium cost of 30-35 points
Sensex (Weekly)	75300 CE till it sustains above 74800 zones	Bull call spread (Buy 75300 CE and Sell 75500 CE) at net premium cost of 50-60 points
Bank Nifty (Monthly)	56500 CE till it sustains above 53750 zones	Bull call spread (Buy 54000 CE and Sell 54500 CE) at net premium cost of 240-250 points

Option - Selling side strategy

Index	Writing
Nifty (Weekly)	22700 PE and 24350 CE
Sensex (Weekly)	73500 PE and 76400 CE
Bank Nifty (Monthly)	49000 PE and 58500 CE

Weekly Option Range for Option Writers based on Different Confidence Band								
Date	3-Jun-26	Weekly Expiry	9-Jun-26	Days to weekly expiry	5			
Nifty		23484	India VIX		15.4			
Confidence Band	Probability	% Away From Spot	Range			Total Premium (Put + Call)	Types of Trades	
			Put	Premium	Call	Premium		
1.00	68%	± 1.4%	23150	46	23850	77	123	Aggressive
1.25	79%	± 1.8%	23050	32	23950	53	86	Less Aggressive
1.50	87%	± 2.3%	22950	23	24050	36	59	Neutral
1.75	92%	± 2.7%	22850	18	24150	24	41	Conservative
2.00	95%	± 3.1%	22750	13	24250	16	28	Most Conservative
Date	3-Jun-26	Monthly Expiry	30-Jun-26	Days to weekly expiry	19			
Bank Nifty		53715						
Confidence Band	Probability	% Away From Spot	Range			Total Premium (Put + Call)	Types of Trades	
			Put	Premium	Call	Premium		
1.00	68%	± 4.1%	51500	289	55900	399	688	Aggressive
1.25	79%	± 5.1%	51000	219	56400	289	508	Less Aggressive
1.50	87%	± 6.2%	50400	160	57000	192	353	Neutral
1.75	92%	± 7.1%	49900	119	57500	134	253	Conservative
2.00	95%	± 8.2%	49300	89	58100	88	177	Most Conservative

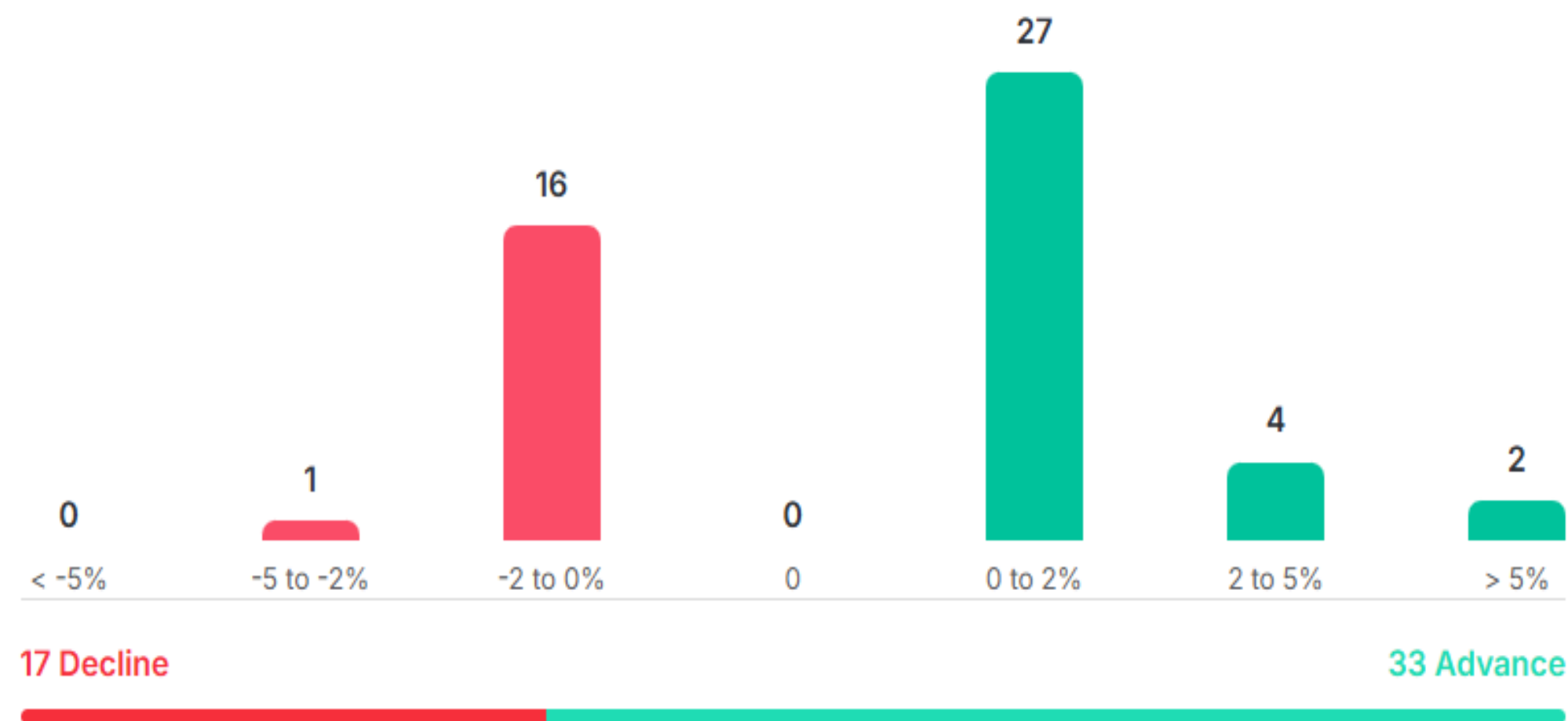
Investments in securities markets are subject to market risks. Please read all related documents carefully.

Nifty Advance Decline & Ban update

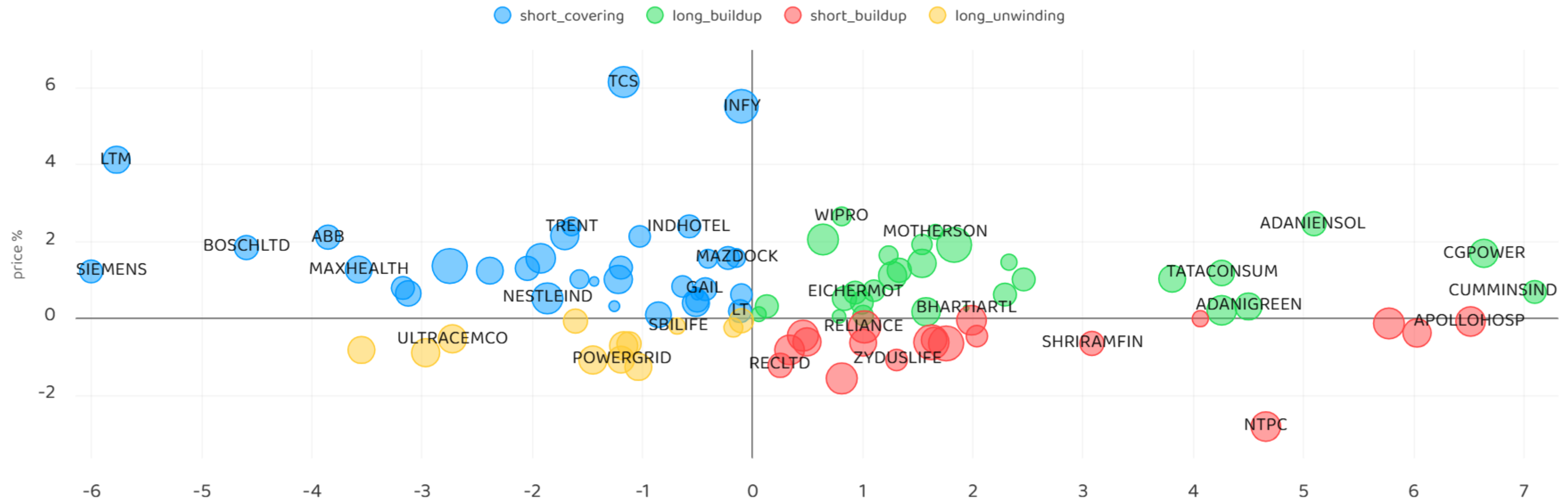
Stocks in Ban:

AMBER and KAYNES

All FNO Nifty 50 Bank Nifty Fin Nifty



Stocks : Derivatives Outlook



Stocks : Options on radar

Stock	Call Strike	Trade	Buying Range	SL	TGT	Logic
COFORGE	1520 CE	Buy	50-55	45	65	Long Buildup
TCS	2460 CE	Buy	55-60	40	90	Short Covering

Stock	Call Strike	Trade	Buying Range	SL	TGT	Logic
AXISBANK	1250 PE	Buy	24-26	20	35	Short Buildup
MFSL	1580 PE	Buy	35-38	30	50	Short Buildup
ALKEM	5200 PE	Buy	105-115	90	145	Short Buildup

Quant Outlook

Quant Intraday Sell Ideas

What is this?

Based on technical indicators this strategy gives 2 stocks that have a high likelihood to fall during the day (from open to close). This is an intraday Sell strategy which can provide a good cushioning during a black swan event.

Today's **Sell** Ideas:

Stock Names	Close Price	SL (1%)	TP (1%)
APLAPOLLO (Sell)	1769	1787	1751
IRFC (Sell)	96.67	97.64	95.70

What are the rules?

- Stock names will be given at market open (9:15 am)
- Recommended time to entry: between 9:15 to 9:30 am.
- Entry: We short 2 stocks daily (intraday)
- Exit: we will exit at 3:15 as this is an intraday call
- SL: is placed at 1% of the open.
- Book profit: At 1% fall since open.
- In special situations the book profit might be delayed if the stock is in free fall.

Siddhartha Khemka
Head – Retail Research

Chandan Taparua, CMT, CFTe
Head – Derivatives & Technical Research

Ruchit Jain
Head – Technical Research

Disclosures:

The following Disclosures are being made in compliance with the SEBI Research Analyst Regulations 2014 (herein after referred to as the Regulations).

Motilal Oswal Financial Services Ltd. (MOFSL) is a SEBI Registered Research Analyst having registration no. INH000000412 and BSE enlistment no. 5028. MOFSL, the Research Entity (RE) as defined in the Regulations, is engaged in the business of providing Stock broking services, Depository participant services & distribution of various financial products. MOFSL is a listed public company, the details in respect of which are available on www.motilaloswal.com. MOFSL is registered with the Securities & Exchange Board of India (SEBI) and is a registered Trading Member with National Stock Exchange of India Ltd. (NSE) and Bombay Stock Exchange Limited (BSE), Multi Commodity Exchange of India Limited (MCX) and National Commodity & Derivatives Exchange Limited (NCDEX) for its stock broking activities & is Depository participant with Central Depository Services Limited (CDSL) National Securities Depository Limited (NSDL), NERL, COMRIS and CCRL and is member of Association of Mutual Funds of India (AMFI) for distribution of financial products and Insurance Regulatory & Development Authority of India (IRDA) as Corporate Agent for insurance products and is a member of Association of Portfolio Managers in India (APMI) for distribution of PMS products. Details of associate entities of Motilal Oswal Financial Services Ltd. are available on the website at <http://onlinereports.motilaloswal.com/Dormant/documents/Associate%20Details.pdf>

Details of pending Enquiry Proceedings of Motilal Oswal Financial Services Limited are available on the website at <https://galaxy.motilaloswal.com/ResearchAnalyst/PublishViewLitigation.aspx>. As per Regulatory requirements, Research Audit Report is uploaded on www.motilaloswal.com > MOFSL-Important Links > MOFSL Research Analyst Compliance Audit Report.

MOFSL, its associates, Research Analyst or their relatives may have any financial interest in the subject company. MOFSL and/or its associates and/or Research Analyst or their relatives may have actual beneficial ownership of 1% or more securities in the subject company at the end of the month immediately preceding the date of publication of the Research Report or date of the public appearance. MOFSL and its associate company(ies), their directors and Research Analyst and their relatives may have any other potential conflict of interests at the time of publication of the research report or at the time of public appearance, however the same shall have no bearing whatsoever on the specific recommendations made by the analyst(s), as the recommendations made by the analyst(s) are completely independent of the views of the associates of MOFSL even though there might exist an inherent conflict of interest in some of the stocks mentioned in the research report..

In the past 12 months, MOFSL or any of its associates may have:

- received any compensation/other benefits from the subject company of this report
- managed or co-managed public offering of securities from subject company of this research report,
- received compensation for investment banking or merchant banking or brokerage services from subject company of this research report,
- received compensation for products or services other than investment banking or merchant banking or brokerage services from the subject company of this research report.

- MOFSL and its associates have not received any compensation or other benefits from the subject company or third party in connection with the research report.
- Subject Company may have been a client of MOFSL or its associates during twelve months preceding the date of distribution of the research report.
- Research Analyst may have served as director/officer/employee in the subject company.
- MOFSL and research analyst may engage in market making activity for the subject company.

MOFSL and its associate company(ies), and Research Analyst and their relatives from time to time may have:

a) a long or short position in, act as principal in, and buy or sell the securities or derivatives thereof of companies mentioned herein.

(b) be engaged in any other transaction involving such securities and earn brokerage or other compensation or act as a marketmaker in the financial instruments of the company(ies) discussed herein or act as an advisor or lender/borrower to such company(ies) or may have any other potential conflict of interests with respect to any recommendation and other related information and opinions.; however the same shall have no bearing whatsoever on the specific recommendations made by the analyst(s), as the recommendations made by the analyst(s) are completely independent of the views of the associates of MOFSL even though there might exist an inherent conflict of interest in some of the stocks mentioned in the research report.

Above disclosures include beneficial holdings lying in demat account of MOFSL which are opened for proprietary investments only. While calculating beneficial holdings, It does not consider demat accounts which are opened in name of MOFSL for other purposes (i.e holding client securities, collaterals, error trades etc.). MOFSL also earns DP income from clients which are not considered in above disclosures.

To enhance transparency, MOFSL has incorporated a Disclosure of Interest Statement in this document. This should, however, not be treated as endorsement of the views expressed in the report. MOFSL and / or its affiliates do and seek to do business including investment banking with companies covered in its research reports. As a result, the recipients of this report should be aware that MOFSL may have a potential conflict of interest that may affect the objectivity of this report.

Terms & Conditions:

This report has been prepared by MOFSL and is meant for sole use by the recipient and not for circulation. The report and information contained herein is strictly confidential and may not be altered in any way, transmitted to, copied or distributed, in part or in whole, to any other person or to the media or reproduced in any form, without prior written consent of MOFSL. The report is based on the facts, figures and information that are considered true, correct, reliable and accurate. The intent of this report is not recommendatory in nature. The information is obtained from publicly available media or other sources believed to be reliable. Such information has not been independently verified and no guaranty, representation of warranty, express or implied, is made as to its accuracy, completeness or correctness. All such information and opinions are subject to change without notice. The report is prepared solely for informational purpose and does not constitute an offer document or solicitation of offer to buy or sell or subscribe for securities or other financial instruments for the clients. Though disseminated to all the customers simultaneously, not all customers may receive this report at the same time. MOFSL will not treat recipients as customers by virtue of their receiving this report.

Analyst Certification

The views expressed in this research report accurately reflect the personal views of the analyst(s) about the subject securities or issues, and no part of the compensation of the research analyst(s) was, is, or will be directly or indirectly related to the specific recommendations and views expressed by research analyst(s) in this report.

Disclosure of Interest Statement

Analyst ownership of the stock No

A graph of daily closing prices of securities is available at www.nseindia.com, www.bseindia.com. Research Analyst views on Subject Company may vary based on Fundamental research and Technical Research. Proprietary trading desk of MOFSL or its associates maintains arm's length distance with Research Team as all the activities are segregated from MOFSL research activity and therefore it can have an independent view with regards to subject company for which Research Team have expressed their views.

Regional Disclosures (outside India)

This report is not directed or intended for distribution to or use by any person or entity resident in a state, country or any jurisdiction, where such distribution, publication, availability or use would be contrary to law, regulation or which would subject MOFSL & its group companies to registration or licensing requirements within such jurisdictions.

For Hong Kong:

This report is distributed in Hong Kong by Motilal Oswal capital Markets (Hong Kong) Private Limited, a licensed corporation (CE AYY-301) licensed and regulated by the Hong Kong Securities and Futures Commission (SFC) pursuant to the Securities and Futures Ordinance (Chapter 571 of the Laws of Hong Kong) "SFO". As per SEBI (Research Analyst Regulations) 2014 Motilal Oswal Financial Services Limited (SEBI Reg No. INH000000412) has an agreement with Motilal Oswal capital Markets (Hong Kong) Private Limited for distribution of research report in Hong Kong. This report is intended for distribution only to "Professional Investors" as defined in Part I of Schedule 1 to SFO. Any investment or investment activity to which this document relates is only available to professional investor and will be engaged only with professional investors." Nothing here is an offer or solicitation of these securities, products and services in any jurisdiction where their offer or sale is not qualified or exempt from registration. The Indian Analyst(s) who compile this report is/are not located in Hong Kong & are not conducting Research Analysis in Hong Kong.

For U.S.

MOTILAL Oswal Financial Services Limited (MOFSL) is not a registered broker - dealer under the U.S. Securities Exchange Act of 1934, as amended (the "1934 act") and under applicable state laws in the United States. In addition MOFSL is not a registered investment adviser under the U.S. Investment Advisers Act of 1940, as amended (the "Advisers Act" and together with the 1934 Act, the "Acts), and under applicable state laws in the United States. Accordingly, in the absence of specific exemption under the Acts, any brokerage and investment services provided by MOFSL, including the products and services described herein are not available to or intended for U.S. persons. This report is intended for distribution only to "Major Institutional Investors" as defined by Rule 15a-6(b)(4) of the Exchange Act and interpretations thereof by SEC (henceforth referred to as "major institutional investors"). This document must not be acted on or relied on by persons who are not major institutional investors. Any investment or investment activity to which this document relates is only available to major institutional investors and will be engaged in only with major institutional investors. In reliance on the exemption from registration provided by Rule 15a-6 of the U.S. Securities Exchange Act of 1934, as amended (the "Exchange Act") and interpretations thereof by the U.S. Securities and Exchange Commission ("SEC") in order to conduct business with Institutional Investors based in the U.S., MOFSL has entered into a chaperoning agreement with a U.S. registered broker-dealer, Motilal Oswal Securities International Private Limited. ("MOSIPL"). Any business interaction pursuant to this report will have to be executed within the provisions of this chaperoning agreement.

The Research Analysts contributing to the report may not be registered /qualified as research analyst with FINRA. Such research analyst may not be associated persons of the U.S. registered broker-dealer, MOSIPL, and therefore, may not be subject to NASD rule 2711 and NYSE Rule 472 restrictions on communication with a subject company, public appearances and trading securities held by a research analyst account.

For Singapore

In Singapore, this report is being distributed by Motilal Oswal Capital Markets (Singapore) Pte. Ltd. ("MOCMSPL") (UEN 201129401Z), which is a holder of a capital markets services license and an exempt financial adviser in Singapore. This report is distributed solely to persons who (a) qualify as "institutional investors" as defined in section 4A(1)(c) of the Securities and Futures Act of Singapore ("SFA") or (b) are considered "accredited investors" as defined in section 2(1) of the Financial Advisers Regulations of Singapore read with section 4A(1)(a) of the SFA. Accordingly, if a recipient is neither an "institutional investor" nor an "accredited investor", they must immediately discontinue any use of this Report and inform MOCMSPL .

In respect of any matter arising from or in connection with the research you could contact the following representatives of MOCMSPL. In case of grievances for any of the services rendered by MOCMSPL write to grievances@motilaloswal.com.

Nainesh Rajani

Email: nainesh.rajani@motilaloswal.com

Contact: (+65) 8328 0276

Disclaimer:

This report is intended for distribution to Retail Investors.

The report and information contained herein is strictly confidential and meant solely for the selected recipient and may not be altered in any way, transmitted to, copied or distributed, in part or in whole, to any other person or to the media or reproduced in any form, without prior written consent. This report and information herein is solely for informational purpose and may not be used or considered as an offer document or solicitation of offer to buy or sell or subscribe for securities or other financial instruments. Nothing in this report constitutes investment, legal, accounting and tax advice or a representation that any investment or strategy is suitable or appropriate to your specific circumstances. The securities discussed and opinions expressed in this report may not be suitable for all investors, who must make their own investment decisions, based on their own investment objectives, financial positions and needs of specific recipient. This may not be taken in substitution for the exercise of independent judgment by any recipient. Each recipient of this document should make such investigations as it deems necessary to arrive at an independent evaluation of an investment in the securities of companies referred to in this document (including the merits and risks involved), and should consult its own advisors to determine the merits and risks of such an investment. The investment discussed or views expressed may not be suitable for all investors. Certain transactions-including those involving futures, options, another derivative products as well as non-investment grade securities - involve substantial risk and are not suitable for all investors. No representation or warranty, express or implied, is made as to the accuracy, completeness or fairness of the information and opinions contained in this document. The Disclosures of Interest Statement incorporated in this document is provided solely to enhance the transparency and should not be treated as endorsement of the views expressed in the report. This information is subject to change without any prior notice. The Company reserves the right to make modifications and alternations to this statement as may be required from time to time without any prior approval. MOFSL, its associates, their directors and the employees may from time to time, effect or have effected an own account transaction in, or deal as principal or agent in or for the securities mentioned in this document. They may perform or seek to perform investment banking or other services for, or solicit investment banking or other business from, any company referred to in this report. Each of these entities functions as a separate, distinct and independent of each other. The recipient should take this into account before interpreting the document. This report has been prepared on the basis of information that is already available in publicly accessible media or developed through analysis of MOFSL. The views expressed are those of the analyst, and the Company may or may not subscribe to all the views expressed therein. This document is being supplied to you solely for your information and may not be reproduced, redistributed or passed on, directly or indirectly, to any other person or published, copied, in whole or in part, for any purpose. This report is not directed or intended for distribution to, or use by, any person or entity who is a citizen or resident of or located in any locality, state, country or other jurisdiction, where such distribution, publication, availability or use would be contrary to law, regulation or which would subject MOFSL to any registration or licensing requirement within such jurisdiction. The securities described herein may or may not be eligible for sale in all jurisdictions or to certain category of investors. Persons in whose possession this document may come are required to inform themselves of and to observe such restriction. Neither the Firm, not its directors, employees, agents or representatives shall be liable for any damages whether direct or indirect, incidental, special or consequential including lost revenue or lost profits that may arise from or in connection with the use of the information. The person accessing this information specifically agrees to exempt MOFSL or any of its affiliates or employees from, any and all responsibility/liability arising from such misuse and agrees not to hold MOFSL or any of its affiliates or employees responsible for any such misuse and further agrees to hold MOFSL or any of its affiliates or employees free and harmless from all losses, costs, damages, expenses that may be suffered by the person accessing this information due to any errors and delays.

This report is meant for the clients of Motilal Oswal only.

Investment in securities market are subject to market risks. Read all the related documents carefully before investing.

Registration granted by SEBI, enlistment as RA with Exchange and certification from NISM in no way guarantee performance of the intermediary or provide any assurance of returns to investors

Registered Office Address: Motilal Oswal Tower, Rahimtullah Sayani Road, Opposite Parel ST Depot, Prabhadevi, Mumbai-400025; Tel No.: 022 - 71934200 / 71934263; www.motilaloswal.com. Correspondence Address: Palm Spring Centre, 2nd Floor, Palm Court Complex, New Link Road, Malad (West), Mumbai- 400 064. Tel No: 022 71881000. Details of Compliance Officer: Neeraj Agarwal, Email Id: na@motilaloswal.com, Contact No.:022-40548085.

Grievance Redressal Cell:

Contact Person	Contact No.	Email ID
Ms. Hemangi Date	022 40548000 / 022 67490600	query@motilaloswal.com
Ms. Kumud Upadhyay	022 40548082	servicehead@motilaloswal.com
Mr. Ajay Menon	022 40548083	am@motilaloswal.com
Mr. Neeraj Agarwal	022 40548085	na@motilaloswal.com
Mr. Siddhartha Khemka	022 50362452	po.research@motilaloswal.com

Registration details: Motilal Oswal Financial Services Ltd. (MOFSL): INZ000158836 (BSE/NSE/MCX/NCDEX); CDSL and NSDL: IN-DP-16-2015; Research Analyst: INH000000412, BSE enlistment no. 5028, AMFI registered Mutual Fund Distributor and SIF Distributor: ARN : 146822. IRDA Corporate Agent – CA0579, APMI: APRN00233. Motilal Oswal Financial Services Ltd. is a distributor of Mutual Funds, PMS, Fixed Deposit, Insurance, Bond, NCDs and IPO products.

Customer having any query/feedback/clarification may write to query@motilaloswal.com. In case of grievances for any of the services rendered by Motilal Oswal Financial Services Limited (MOFSL) write to grievances@motilaloswal.com, for DP to dp grievances@motilaloswal.com.

Investment in securities market are subject to market risks, read all the related documents carefully before investing.