

Dt.: 06 July, 2026

INDEX	NIFTY	BANKNIFTY	USDINR
Outlook	Bullish	Bullish	Neutral

INSTITUTIONAL TRADING ACTIVITY IN CRS.			
Category	Buy Value	Sell Value	Net Value
FII	13337.33	11982.00	+1355.33
DII	11676.57	20630.24	-1959.83

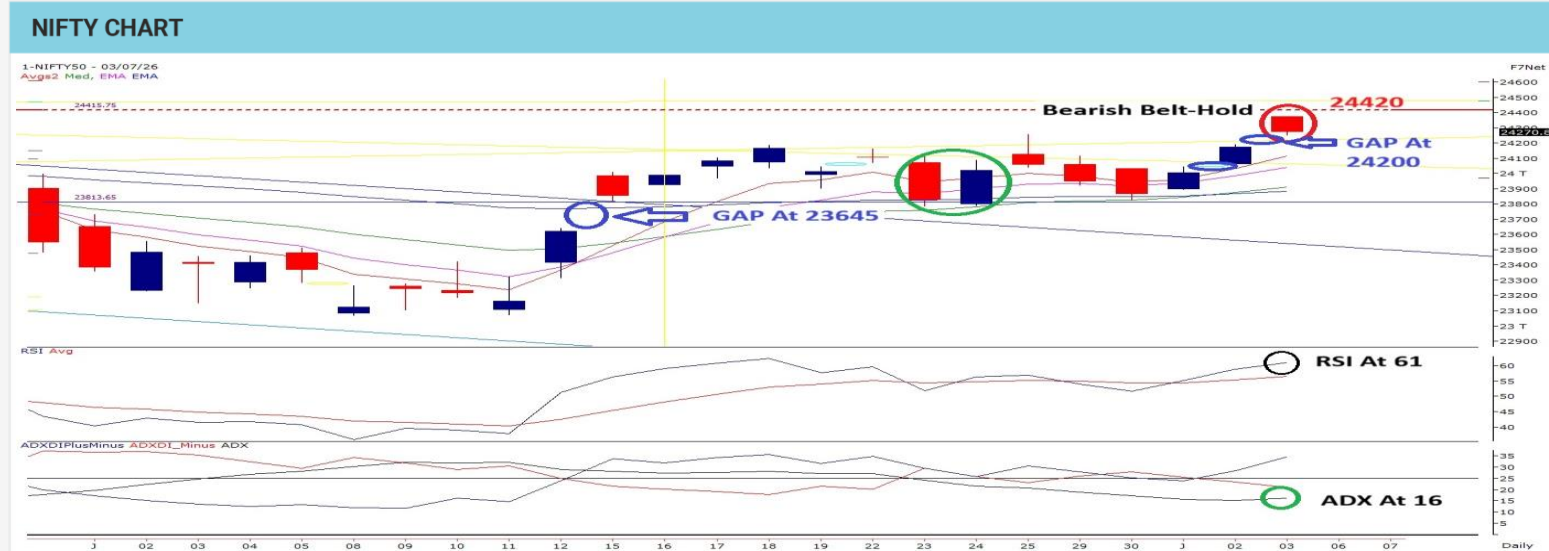
TRADE STATISTICS FOR 03/07/2026			
Instrument	No. of Contracts	Turnover (Cr.)	Put Call Ratio
Index Fut.	74811	12184.14	
Stock Fut.	1111422	76377.36	
Index Opt.	90282173	14304438	1.14
Stock Opt.	5659028	401101.7	
F&O Total	97127434	14794101	



PIVOT TABLE					
	R2	R1	PIVOT	S1	S2
NIFTY	24478	24327	24300	24222	24170
BANKNIFTY	58514	58303	58028	57912	57692

NIFTY FUT.			
	TRIGGER	T1	T2
Above	24500	24646	24788
Below	23800	23502	23398

BANK NIFTY FUT.			
	TRIGGER	T1	T2
Above	58500	58950	59422
Below	57500	56854	55945



Nifty ended the previous week on a subdued note after failing to sustain its gap-up gains and forming a 'Bearish Belt-Hold' candlestick pattern near the crucial 24420 resistance zone. Despite the rejection at higher levels, the broader technical structure remains constructive, as the index continues to trade above its key short-term moving averages, indicating healthy progress in uptrend rather than a reversal as of now. During this week the immediate focus remains on the 24420 hurdle. A decisive closing above this level would confirm a fresh breakout which could attract fresh momentum buying and paving the way for an advance towards 24750, followed by the channel pattern target near 25000. On the downside, the 24000–23980 zone is expected to act as immediate support and can be used as a trailing stop for momentum-based long positions. The major structural support remains at 23800, and only a sustained breach below this level would weaken the prevailing bullish trend and trigger a deeper corrective phase. Overall, improving trend strength indicators, a constructive monthly breakout, and favourable July seasonality continue to support a positive outlook. Hence, the preferred strategy remains buy on dips as long as Nifty sustains above the 24000 support zone.

**Trade Scanner:** ANGELONE, BAJAJFINSV, CAMS, DABUR, DELHIVERY, DLF, IDFCFIRSTB, INDUSINDBK, LUPIN, M&M, MARICO, MOTHERSON, SAIL, SRF. AMBER, BANKBARODA, BLUESTARCO, CGPOWER, GVT&D, IRFC, MCX, PAGEIND, PETRONET, RVNL, ZYDUSLIFE.

**RESEARCH DESK:** Sacchitanand Uttekar - VP - Research (Derivatives & Technicals)

**Disclaimer:** Investments in securities market are subject to market risk, read all the related documents carefully before investing.

The securities quoted are for illustration only and are not recommendatory | Registration granted by SEBI and certification from NISM in no way guarantee performance of the intermediary or provide any assurance of returns to investors.

**Disclaimer:** This document is for private circulation and information purpose only and should not be regarded as an investment, trading, taxation, legal or price risk management advice. In no circumstances it is considered as an offer to sell or a solicitation of any offer to buy or sell the Equity derivatives mentioned herein. We and our affiliates, group companies, directors and employees, and directors and employees of our affiliates and group companies, including persons involved in the preparation or issuance of this material may (a) have positions in Equity (derivatives or physical) mentioned hereby or (b) have other positions which might have conflicting interest with respect to any related information. The information contained hereby may have been taken from sources which we believe are reliable. We do not guarantee that such information is accurate or complete and it should not be relied upon as such. Any opinion expressed reflects judgments at this date and are subject to change without notice. Risk of loss in Equity derivatives trading can be substantial. Persons trading in Equity Derivatives should consider the suitability of trading based upon their resources, risk appetite and other relevant information; and understand that statements regarding future prospects may not be realized.